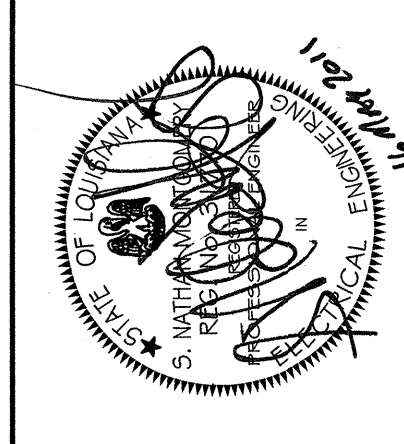
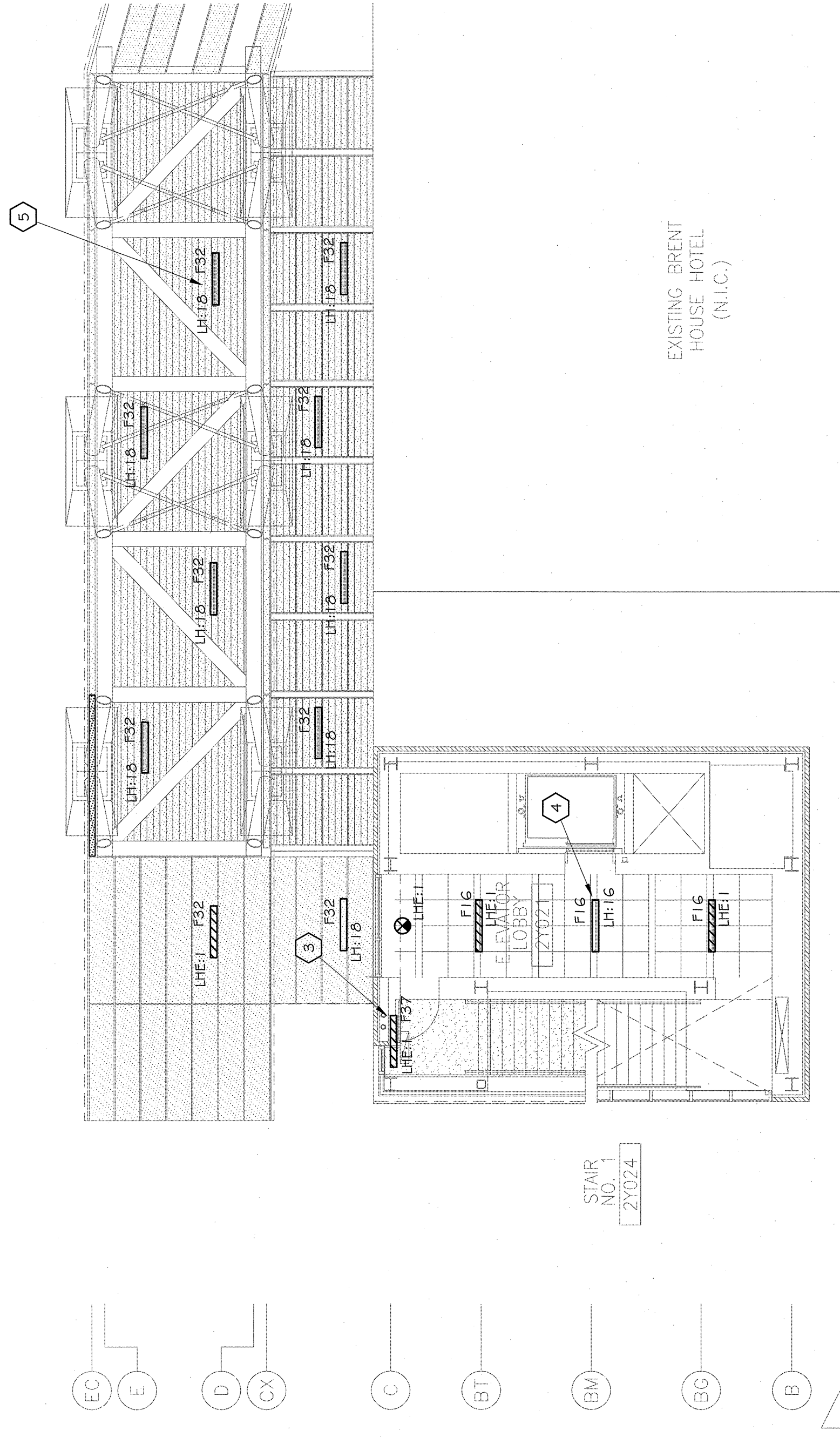


THE ABOVE DRAWINGS AND SPECIFICATIONS AND SHALL REMAIN THE PROPERTY OF THE ARCHITECT AND NO PART OF THESE DRAWINGS SHALL BE REPRODUCED OR TRANSMITTED IN ANY FORM OR BY ANY MEANS, ELECTRONIC OR MECHANICAL, INCLUDING PHOTOCOPYING, RECORDING, OR BY ANY INFORMATION STORAGE AND RETRIEVAL SYSTEM, WITHOUT THE WRITTEN CONSENT OF THE ARCHITECT. THESE DRAWINGS OR SPECIFICATIONS SHALL CONSTITUTE CONCLUSIVE EVIDENCE OF THE DESIGN AND SHALL BE USED IN CONNECTION WITH ANY WORK OR PROJECT FOR WHICH THEY WERE PREPARED AND DEVELOPED WITHOUT LIABILITY TO THE ARCHITECT. ANY CHANGES OR MODIFICATIONS TO THESE DRAWINGS OR SPECIFICATIONS SHALL BE MADE BY THE ARCHITECT AND SHALL BE INDICATED BY A REVISION. ANY CHANGES OR MODIFICATIONS MADE BY OTHERS SHALL BE INDICATED BY A REVISION. THE ARCHITECT SHALL NOT BE RESPONSIBLE FOR ANY DAMAGES OR INJURIES TO PERSONS OR PROPERTY ARISING OUT OF THE USE OF THESE DRAWINGS OR SPECIFICATIONS. CONTRACTORS SHALL VERIFY, AND BE RESPONSIBLE FOR, ALL DIMENSIONS AND CONDITIONS OF EXISTING CONDITIONS AND SHALL NOTIFY THE ARCHITECT IMMEDIATELY IN WRITING OF ANY DISCREPANCIES OR VARIATIONS FROM THE DIMENSIONS AND CONDITIONS SHOWN ON THESE DRAWINGS. SHOP DETAILS MUST BE SUBMITTED TO THE OFFICE FOR APPROVAL BEFORE PROCEEDING WITH FABRICATION.

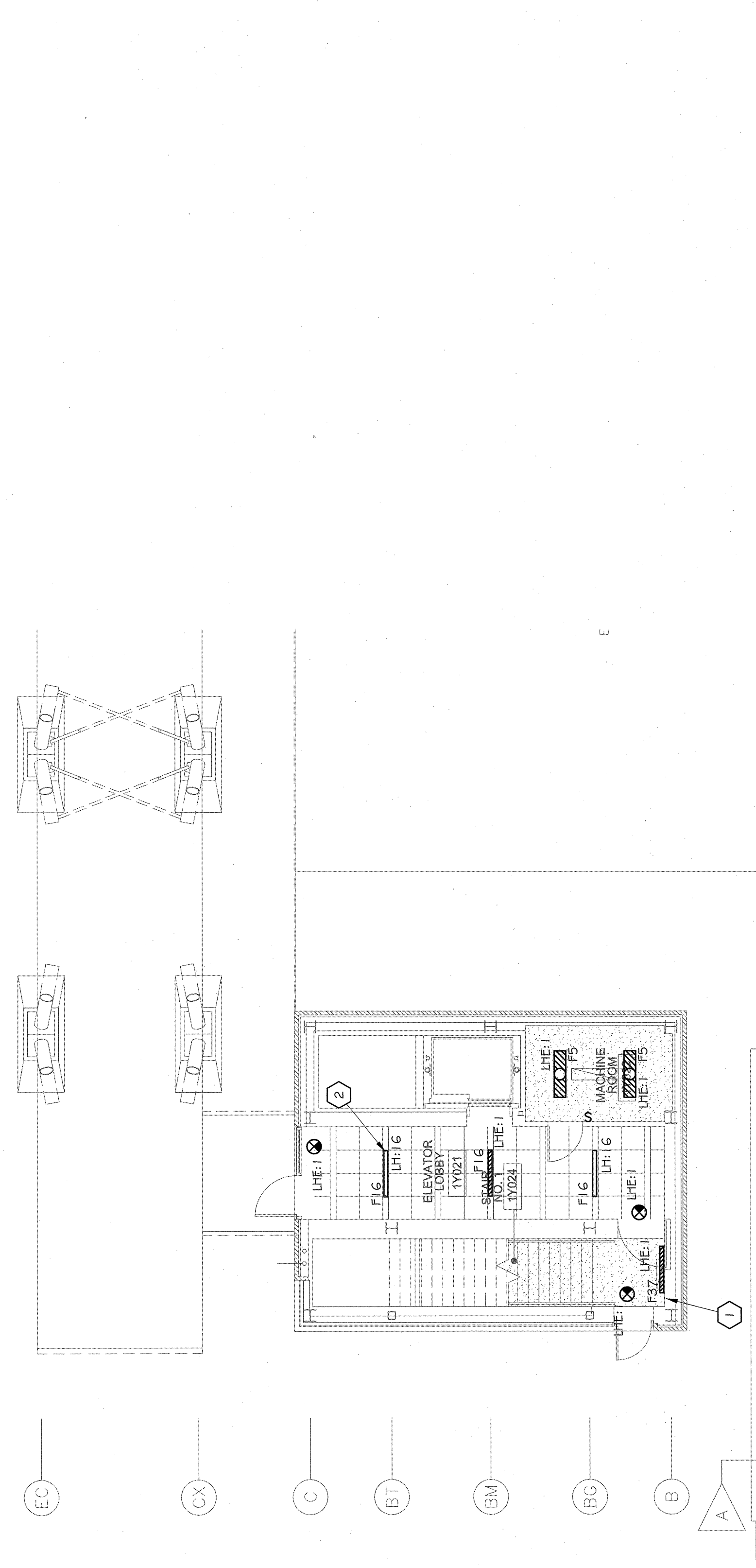
OCHSNER NORTH CAMPUS INTERNAL MEDICINE RELOCATION
 OCHSNER MEDICAL CENTER
 1401 Jefferson Highway
 Jefferson, LA 70121
 Copyright © 2010
 Eskew+DummeZ+Ripple / Rozas+Ward, Joint Venture
 Date: 16 MAY 2011



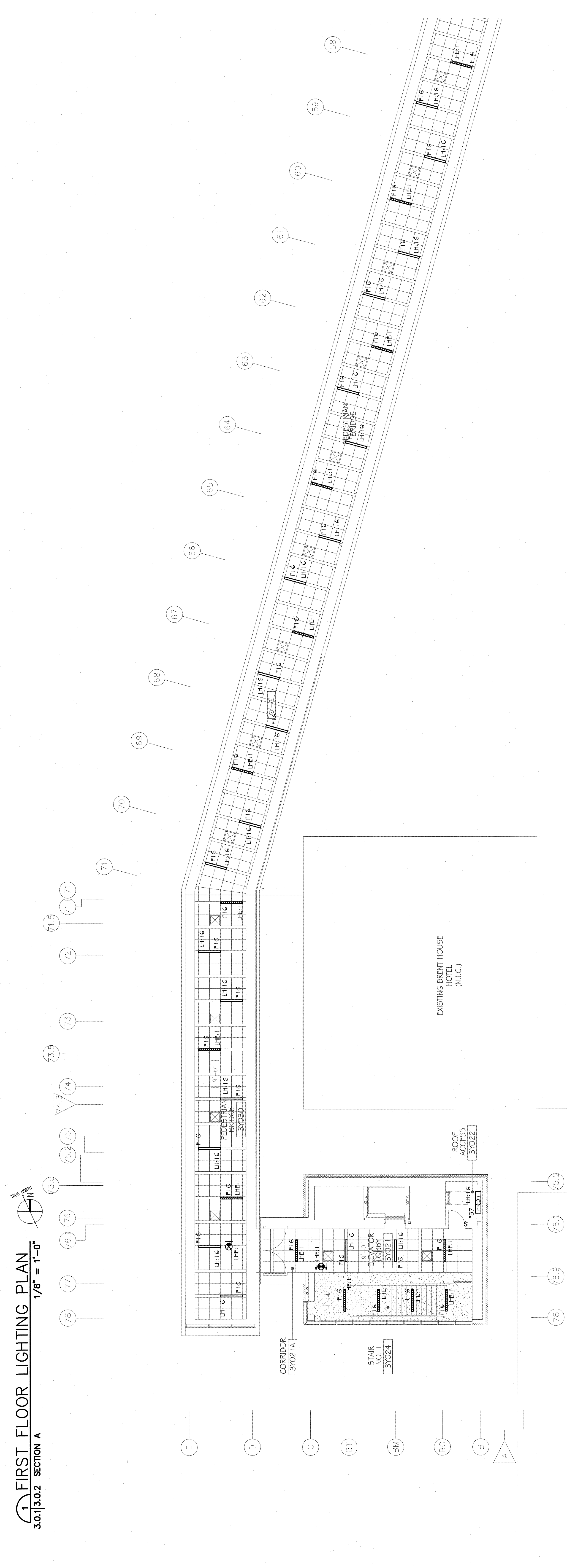
LIGHTING FIRST FLOOR PLAN SECTION 1 - AREA A
 EDR No. 09023
 RWA No. 09024
 drawn: BGM
 checked: DAB
 approved: SNM
 sheet:



2 SECOND FLOOR LIGHTING PLAN
 SECTION A
 3.0.1|3.0.2
 1/8" = 1'-0"



1 FIRST FLOOR LIGHTING PLAN
 SECTION A
 3.0.1|3.0.2
 1/8" = 1'-0"



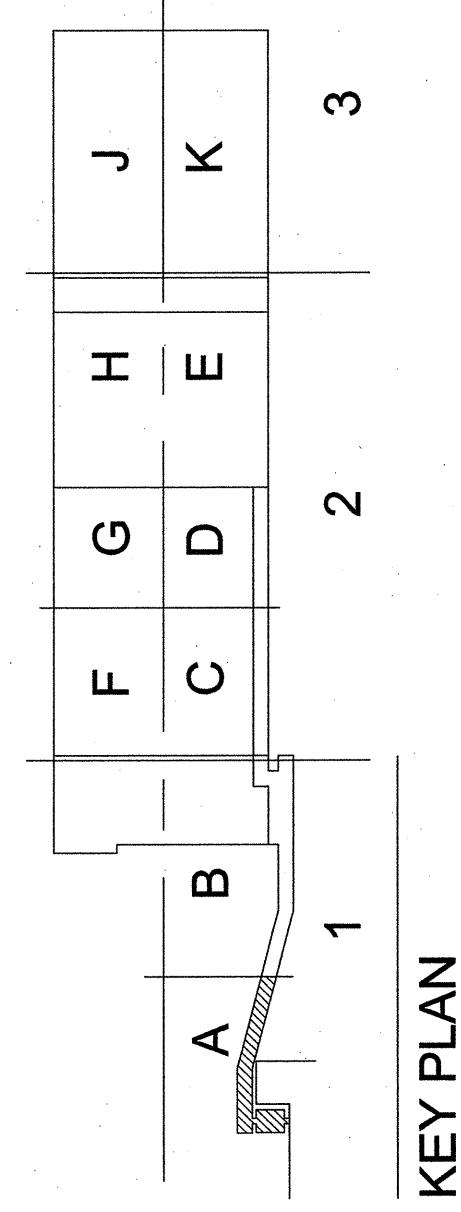
3 THIRD FLOOR LIGHTING PLAN
 SECTION 1
 3.0.1
 1/8" = 1'-0"

GENERAL NOTES:

- ALL "O" ARE F11'S UNLESS NOTED OTHERWISE.
- ALL "□" ARE F5'S UNLESS NOTED OTHERWISE.
- ALL "●" ARE X1'S UNLESS NOTED OTHERWISE.
- LETTER "A,B,C,..." NEXT TO SWITCH INDICATES OUTLET CONTROLLED.
- "LH-1, LH-1" DESIGNATION NEXT TO LIGHTING FIXTURE INDICATES CIRCUIT BREAKER FIXTURE IS CONNECTED TO.

SPECIFIC NOTES (THIS SHEET ONLY):

- ROUTE CIRCUIT UP TO F57 ON SECOND FLOOR STAIRWELL.
- ROUTE CIRCUIT UP TO F165 IN LOBBY ON SECOND FLOOR.
- ROUTE CIRCUIT UP TO F165 IN STAIRWELL ON THIRD FLOOR.
- ROUTE CIRCUIT LH165 UP TO F165 IN LOBBY ON THIRD FLOOR.
- F325 (LH168) IN CANOPY TO BE CONNECTED TO F325 IN CANOPY ON INTERNAL MEDICINE SIDE.



WDG | ARCHITECTS ENGINEERS
 1100 POYDRAS ST. SUITE 1340 - NOLA 70163 - t. 504.754.5280