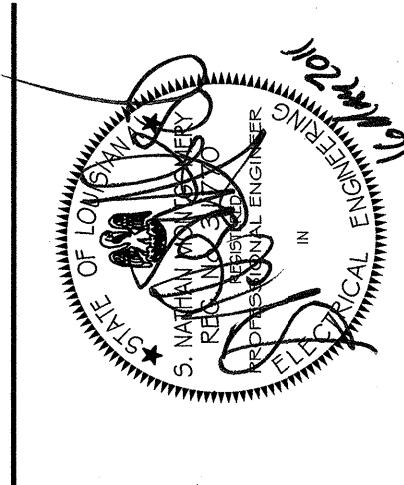


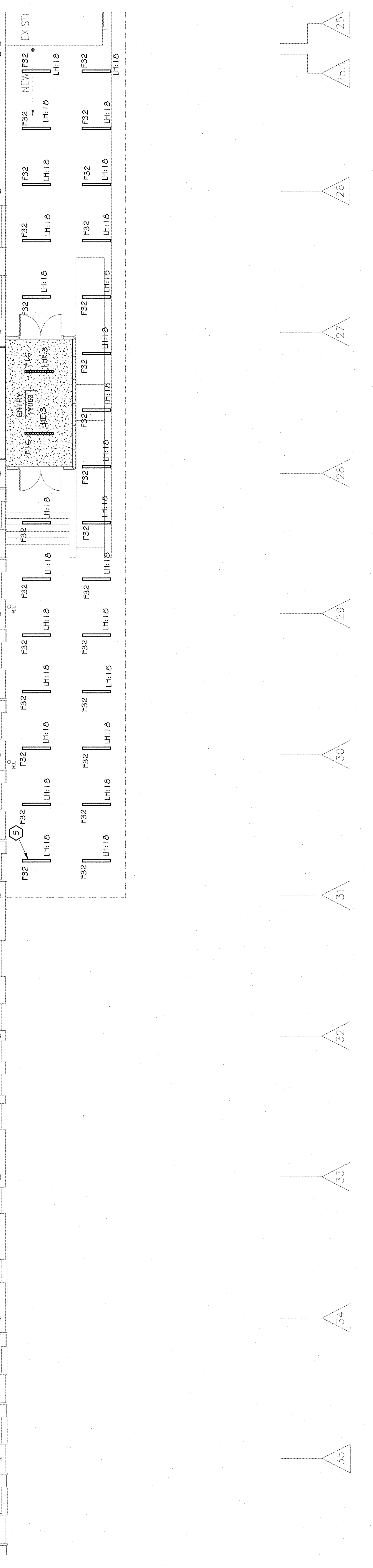
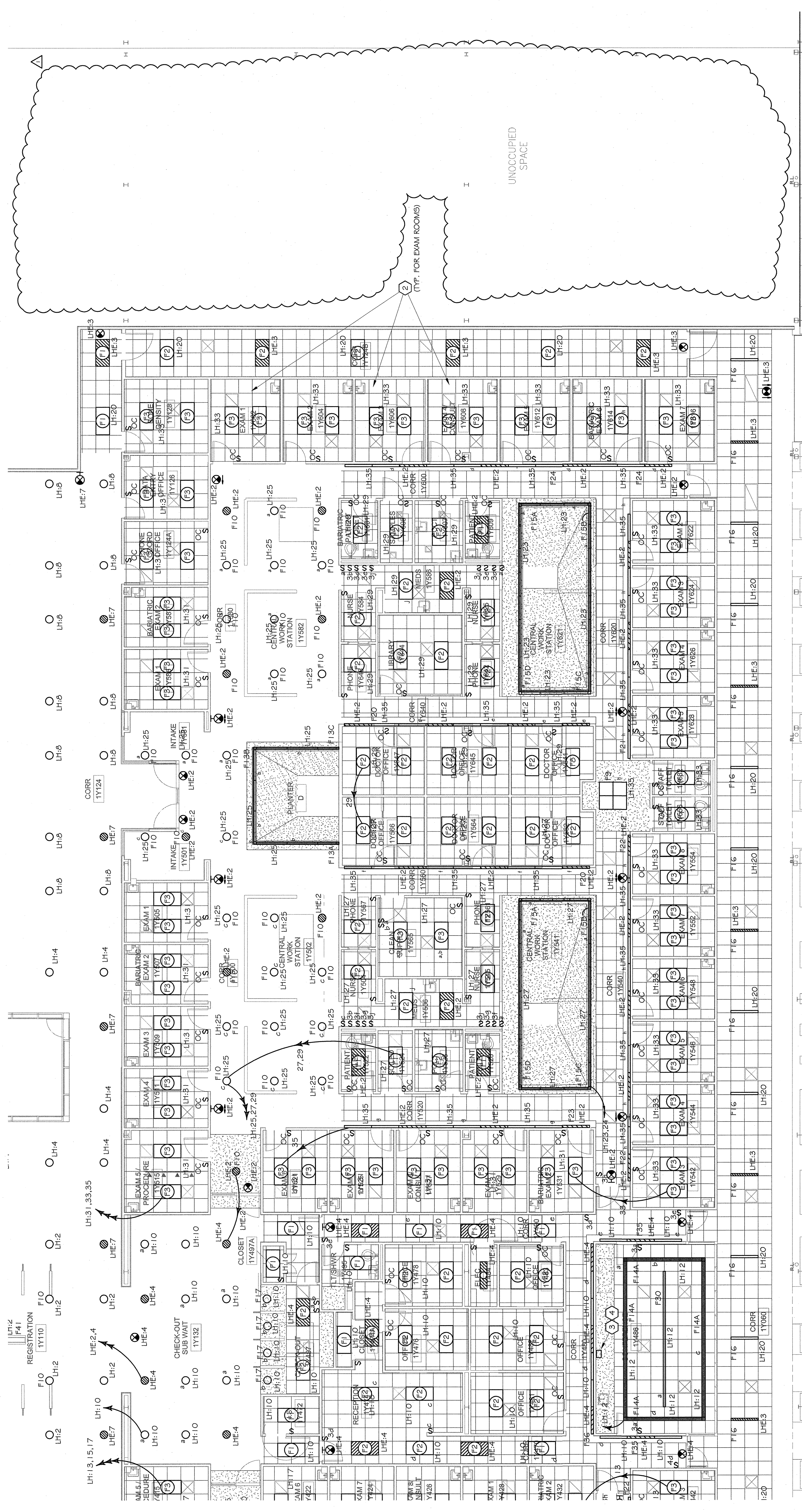
THE ABOVE DRAWINGS AND SPECIFICATIONS AND DEPENDS THEREON, SHALL BE THE PROPERTY OF THE ARCHITECT, AND NO PART THEREOF SHALL BE REPRODUCED OR TRANSMITTED IN ANY FORM OR BY ANY MEANS, ELECTRONIC OR MECHANICAL, INCLUDING PHOTOCOPYING, RECORDING, OR BY ANY INFORMATION STORAGE AND RETRIEVAL SYSTEM, WITHOUT THE WRITTEN CONSENT OF THE ARCHITECT. ANY REPRODUCTION OR TRANSMISSION OF THESE DRAWINGS OR SPECIFICATIONS SHALL CONSTITUTE A VIOLATION OF THE ARCHITECT'S RIGHTS AND SHALL BE SUBJECT TO THE PENALTIES PROVIDED IN THE ARCHITECT'S STANDARD CONDITIONS OF CONTRACT. CONTRACTORS SHALL VERIFY AND BE RESPONSIBLE FOR ALL DIMENSIONS AND CONDITIONS OF EXISTING CONDITIONS PRIOR TO THE START OF WORK. ANY VARIATIONS FROM THE DIMENSIONS AND CONDITIONS SHOWN ON THESE DRAWINGS SHALL BE SUBMITTED TO THE ARCHITECT FOR APPROVAL PRIOR TO PROCEEDING WITH FABRICATION.

**OCHSNER NORTH CAMPUS INTERNAL MEDICINE RELOCATION**  
 OCHSNER MEDICAL CENTER  
 1401 Jefferson Highway  
 Jefferson, LA 70121

Copyright © 2010  
 Eskew-Dumez-Ripple / Rozas-Ward, Joint Venture  
 Date: 16 MAY 2011  
 VE 16 MAY 2011



**LIGHTING FIRST FLOOR PLAN SECTION 2 - AREA D**  
 EDR No. 09023  
 RWA No. 09024  
 BGM  
 drawn:  
 checked:  
 approved:  
 SNM  
 sheet:



**1 FIRST FLOOR LIGHTING PLAN**  
 3.0.4 SECTION 2 - AREA D  
 1/8" = 1'-0"

**GENERAL NOTES:**

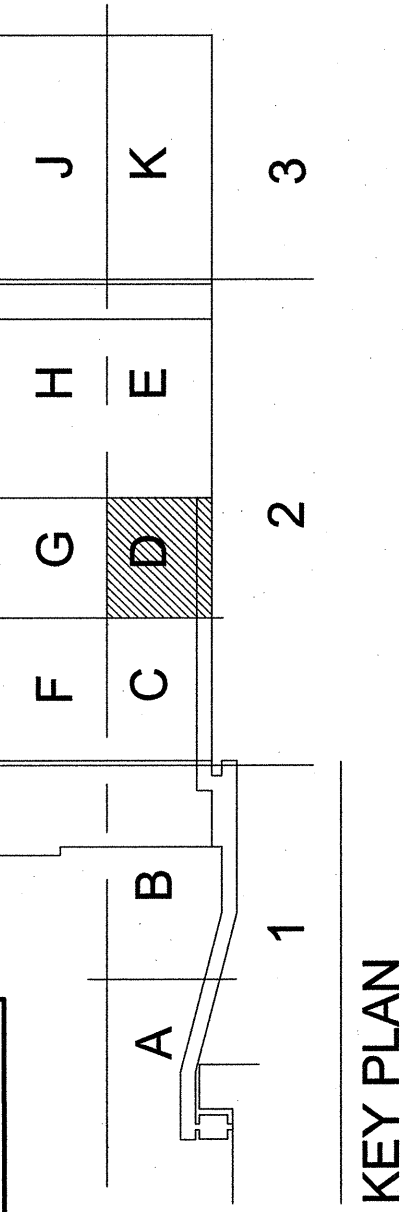
- ALL 'O' ARE F1'S UNLESS NOTED OTHERWISE.
- ALL '□' ARE F2'S UNLESS NOTED OTHERWISE.
- ALL '●' ARE X1'S UNLESS NOTED OTHERWISE.
- LETTER 'A,B,C,etc.' NEXT TO SWITCH INDICATES OUTLET CONTROLLED.
- 'LH1', 'LH1'' DESIGNATION NEXT TO LIGHTING FIXTURE INDICATES CIRCUIT BREAKER PICTURE IS CONNECTED TO.

**DEMOLITION NOTES:**

- CONTRACTOR SHALL REMOVE ALL ELECTRICAL EXISTING LIGHTING FIXTURES, PRACTICES, PANELS, BOXES, CONDUIT WIRING, SPECIAL SYSTEMS AND OTHER ELECTRICAL APPARATUS IN AREAS WHERE NEW WORK IS BEING ACCOMPLISHED.
- WHERE EXISTING LIGHTING FIXTURES ARE IN ADJACENT AREAS AND ARE SERVED THROUGH LIGHTING FIXTURES WHICH ARE IN AREAS BEING RENOVATED, CONTRACTOR SHALL CUT CONDUIT CONDUITS AT BUILDING LINE OF NEW WORK AND REMOVE WIRING BACK TO SOURCE OF SUPPLY. REMOVE EXISTING LIGHT FIXTURES AND PROVIDE NEW FIXTURES AS SHOWN ON LIGHTING PLANS.
- WHERE OUTLETS, PANELS, ETC. IN ADJACENT AREAS ARE SERVED BY THROUGH OUTLETS, PANELS, ETC. WHICH ARE IN AREAS BEING RENOVATED, CONTRACTOR SHALL CUT EXISTING CONDUITS OR EQUIPMENT AT BUILDING LINE OF NEW WORK AND REMOVE WIRING BACK TO SOURCE OF SUPPLY. REMOVE EXISTING LIGHT FIXTURES AND PROVIDE NEW FIXTURES AS SHOWN ON POWER PLANS.

**LIGHTING NOTES (THIS SHEET ONLY):**

- SWITCH 'S' TO ILLUMINATE MIDDLE LAMP AND SWITCH 'Y' TO ILLUMINATE TWO OUTER LAMPS.
- OCCUPANCY SENSOR TO BE TYPE THAT HAS TWO POSITIONS ONE TO ILLUMINATE TWO LAMPS WHEN ENTERING ROOM AND SECOND POSITION TO OPERATE 1 LAMP.
- JUNCTION BOX FOR LIGHTING CONTROL SYSTEM PROVIDED BY AV SUPPLIER EXACT LOCATION TO BE DETERMINED AT THE JOBSITE WITH THE ARCHITECT/ENGINEER'S REF AND AV SUPPLIER.
- ELECTRICAL CONTRACTOR TO PROVIDE ALL WIRING IN ACCORDANCE WITH CONTROL SYSTEM MANUFACTURER'S WIRING DIAGRAM FOR CONTROL OF LIGHTING IN CONFERENCE ROOM AS SHOWN.
- CONNECT TO F32'S IN CLOSET AT ELEVATOR LOBBY.



**W.D.G.**  
 WDG | ARCHITECTS ENGINEERS  
 1100 POYDRAS ST. SUITE 1360 - NOLA 70163 - T.504.754.5280