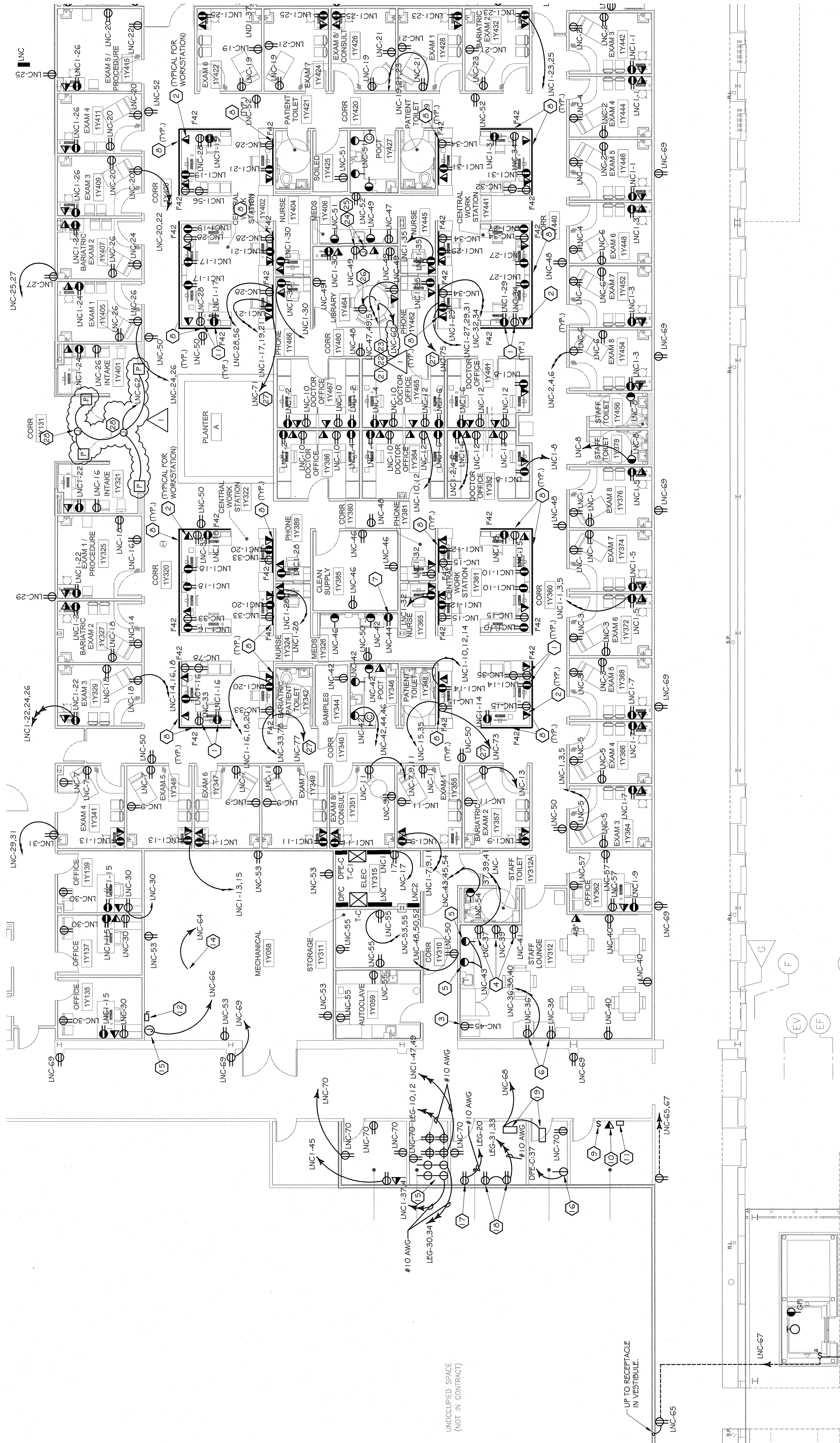


SEE SHEET E3.1.6



SEE SHEET E3.1.4

UNOCCUPIED SPACE
 (NOT IN CONTRACT)

UP TO RECEPTACLE IN VERTIBULE.

SPECIFIC NOTES (THIS SHEET ONLY):

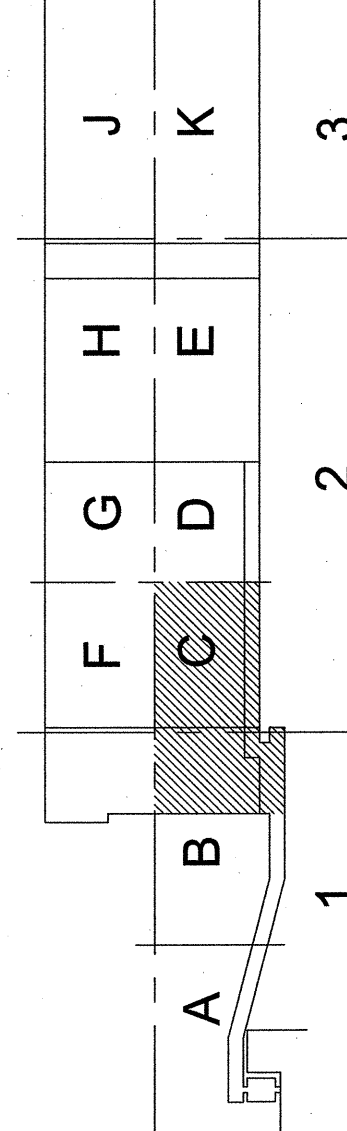
- 1) ROUTE WIRING BELOW RAISED FLOOR TO RECEPTACLE ON SAME CIRCUIT AT FULL HEIGHT PARTITION.
- 2) ROUTE CONDUIT WITH FULL STRING TO NEAREST FULL HEIGHT PARTITION AND THEN ROUTE OVER HEAD TO CABLE TRAY. SEE SYSTEMS PLAN FOR CABLE TRAY ROUTING.
- 3) FOR REFRIGERATOR, MOUNT RECEPTACLE 36" A.F.F.
- 4) MICROVAPE - MOUNTED IN SHELF ABOVE COUNTER. MOUNT RECEPTACLE APPROXIMATELY 72" A.F.F.. VERIFY EXACT HEIGHT AND LOCATION PRIOR TO ROUGH-IN.
- 5) MOUNT RECEPTACLE 6" ABOVE COUNTER OR BACKSPASH IF BACKSPASH IS INSTALLED.
- 6) FOR VENDING MACHINE - MOUNT RECEPTACLE 36" A.F.F.
- 7) FOR UNDER COUNTER REFRIGERATOR.
- 8) UNDERCOUNTER TASK LIGHTING. SEE LIGHTING SCHEDULE. TYPICAL FOR ALL WORKSTATIONS. ALL TASK LIGHTING LIGHTING TO BE WIRED ON SAME CIRCUIT. WIRING TO BE CONCEALED, ROUTED UNDER RAISED FLOOR TO FULL HEIGHT PARTITION AND THEN OVERHEAD TO PANEL.
- 9) SWITCH FOR ELEVATOR CAB LIGHTING CIRCUIT. SWITCH SHALL HAVE A LOCK-OFF DEVICE AND PLATE TO READ ELEVATOR CAB LIGHTING? CONNECT FROM SWITCH TO ELEVATOR CONTROLLER.
- 10) PROVIDE OUTLET WITH TELEPHONE WIRING FROM TELEPHONE SYSTEM LOCATION AND CONNECT TO ELEVATOR CONTROLLER AS REQUIRED FOR ELEVATOR CAB TELEPHONE.
- 11) CIRCUIT BREAKER FOR ELEVATOR (SEE RISER DIAGRAM).
- 12) DISCONNECT SWITCH FOR AHU. MOUNT IN AN ACCESSIBLE LOCATION. EXACT LOCATION TO BE COORDINATED WITH LAYOUT OF MECHANICAL EQUIPMENT IN ROOM. SEE RISER DIAGRAM FOR ELECTRICAL REQUIREMENTS.
- 13) FOR IVAC CONTROLS. VERIFY EXACT LOCATION AND REQUIREMENTS PRIOR TO ROUGH-IN.
- 14) FOR UV LIGHT. VERIFY EXACT LOCATION AND REQUIREMENTS PRIOR TO ROUGH-IN.
- 15) PROVIDE NEMA 16-20 RECEPTACLE TWISTLOCK. TYPICAL FOR (4).

DEMOLITION NOTES:

1. CONTRACTOR SHALL REMOVE ALL ELECTRICAL EXISTING LIGHTING FIXTURES, DEVICES, PANELS, CENTRAL WORK STATION, AND OTHER ELECTRICAL APPARATUS IN AREAS WHERE NEW WORK IS BEING ACCOMPLISHED.
2. WHERE EXISTING LIGHTING FIXTURES ARE IN AREAS BEING RENOVATED, CONTRACTOR SHALL OUT EXISTING CONDUITS AT BUILDING LINE OF NEW WORK AND REMOVE WIRING BACK TO SOURCE SHOWING ON LIGHTING PLANS. REMOVE EXISTING LIGHT FIXTURES AND PROVIDE NEW AS SHOWN ON LIGHTING PLANS.
3. WHERE OUTLETS, PANELS, PFCs, IN ADJACENT AREAS ARE SERVED BY THROUGH OUTLETS, CONTRACTOR SHALL REMOVE EXISTING CONDUITS AT BUILDING LINE OF NEW WORK AND REMOVE WIRING BACK TO SOURCE OR NEAREST OUTLET TO REMAIN. PROVIDE RECEPTACLES AS SHOWN ON POWER PLANS.

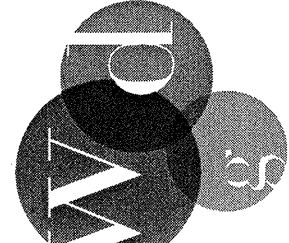
SPECIFIC ALTERNATE NOTES: (THIS SHEET)

- DEDUCT ALTERNATE NO.1
 CENTRAL WORK STATION - ELECTRICAL CONTRACTOR TO ONLY PROVIDE ELECTRICAL AND DATA CONNECTIONS TO PRE-WIRED MANUFACTURER TO ENSURE THE ELECTRICAL CONNECTIONS ARE AS SHOWN AND PROVIDE ADEQUATE CIRCUITING FOR EQUIPMENT.
- DEDUCT ALTERNATE NO.2
 DOCTORS OFFICE MULTIBOOK - ELECTRICAL CONTRACTOR TO ONLY PROVIDE ELECTRICAL AND DATA CONNECTIONS TO PRE-WIRED PARTITIONS. PARTITIONS WILL BE EQUIPPED WITH TASK LIGHTS. ELECTRICAL CONTRACTOR TO COORDINATE WITH FURNITURE MANUFACTURER TO ENSURE THE ELECTRICAL CONNECTIONS ARE AS SHOWN AND PROVIDE ADEQUATE CIRCUITING FOR EQUIPMENT.
- DEDUCT ALTERNATE NO.3
 DOCTORS OFFICE MULTIBOOK - ELECTRICAL CONTRACTOR TO ONLY PROVIDE ELECTRICAL AND DATA CONNECTIONS TO PRE-WIRED PARTITIONS. PARTITIONS WILL BE EQUIPPED WITH TASK LIGHTS. ELECTRICAL CONTRACTOR TO COORDINATE WITH FURNITURE MANUFACTURER TO ENSURE THE ELECTRICAL CONNECTIONS ARE AS SHOWN AND PROVIDE ADEQUATE CIRCUITING FOR EQUIPMENT.



KEY PLAN

WDG | ARCHITECTS ENGINEERS



1100 POYDRAS ST. SUITE 1360 - NOLA 70163 - T. 504.754.5280

**OCHSNER
 NORTH CAMPUS
 INTERNAL
 MEDICINE
 RELOCATION**

OCHSNER MEDICAL CENTER
 1401 Jefferson Highway
 Jefferson, LA 70121

Copyright © 2010
 Eskew+Dumez+Ripple /
 Rozas-Ward, Joint Venture

Date: 16 MAY 2011
 ADD #3 13 JANUARY 2010



**POWER
 FIRST FLOOR PLAN
 SECTION 2 - AREA C**
 EDR No. 09023
 draw: DAB
 checked: DAB
 approved: SNM
 sheet: