

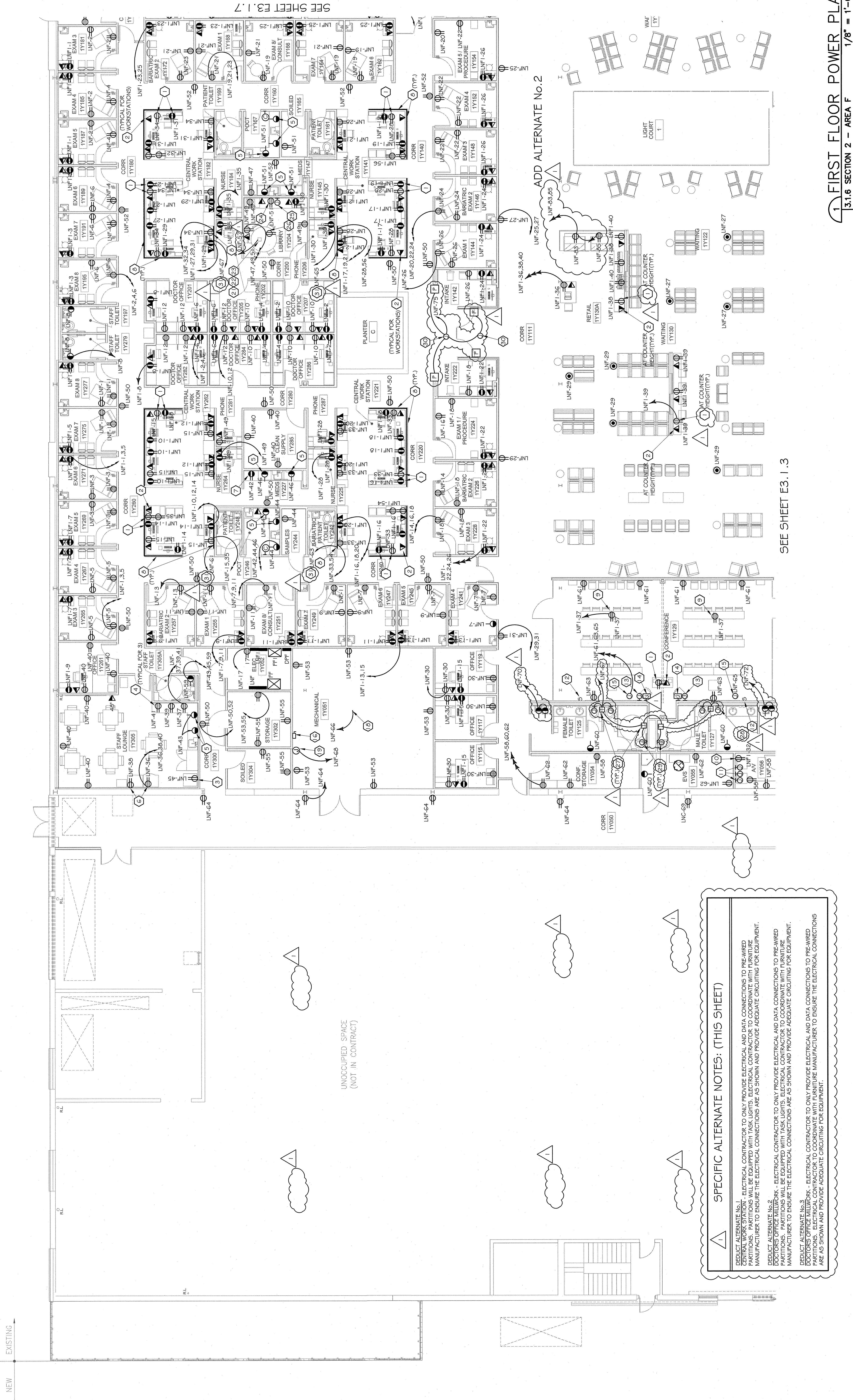
THE ABOVE DRAWINGS AND SPECIFICATIONS SHALL BE THE PROPERTY OF THE ARCHITECT AND NO PART THEREOF SHALL BE REPRODUCED OR TRANSMITTED IN ANY FORM OR BY ANY MEANS, ELECTRONIC OR MECHANICAL, INCLUDING PHOTOCOPYING, RECORDING, OR BY ANY INFORMATION STORAGE AND RETRIEVAL SYSTEM, WITHOUT THE WRITTEN CONSENT OF THE ARCHITECT. THE ARCHITECT SHALL BE RESPONSIBLE FOR THE ACCURACY OF THE INFORMATION PROVIDED AND SHALL BE RESPONSIBLE FOR OBTAINING ALL NECESSARY PERMITS AND APPROVALS FROM THE APPROPRIATE AGENCIES. THE CONTRACTOR SHALL VERIFY AND BE RESPONSIBLE FOR THE ACCURACY OF ALL DIMENSIONS AND CONDITIONS OF THE WORK AND SHALL BE RESPONSIBLE FOR OBTAINING ALL NECESSARY PERMITS AND APPROVALS FROM THE APPROPRIATE AGENCIES. THE CONTRACTOR SHALL BE RESPONSIBLE FOR OBTAINING ALL NECESSARY PERMITS AND APPROVALS FROM THE APPROPRIATE AGENCIES. THE CONTRACTOR SHALL BE RESPONSIBLE FOR OBTAINING ALL NECESSARY PERMITS AND APPROVALS FROM THE APPROPRIATE AGENCIES.

**OCHSNER NORTH CAMPUS INTERNAL MEDICINE RELOCATION**  
OCHSNER MEDICAL CENTER  
1401 Jefferson Highway  
Jefferson, LA 70121

Copyright © 2010  
EskeW+DummeZ+Ripple /  
Rozas+Ward, Joint Venture  
Date: 18 MAY 2011  
ADD #3 13 JANUARY 2010



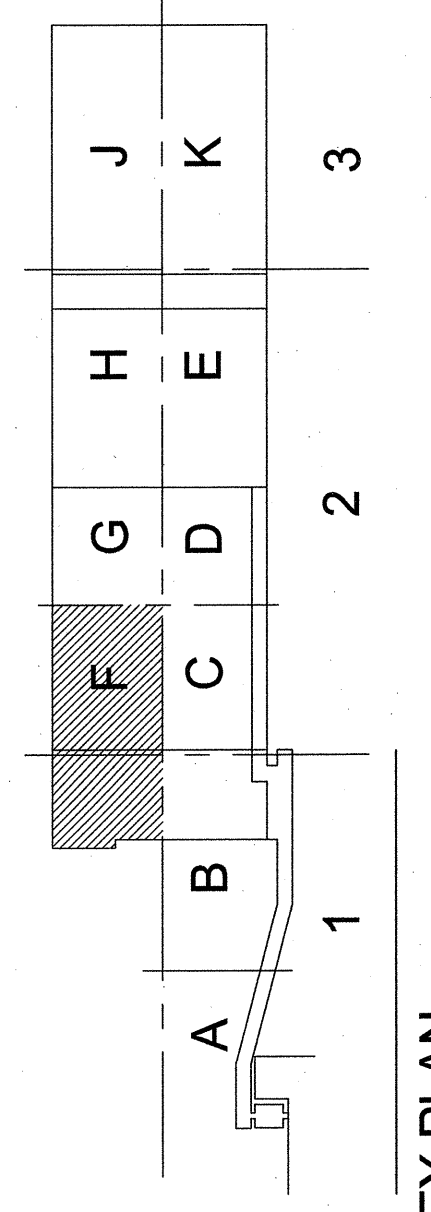
**POWER FIRST FLOOR PLAN SECTION 2 - AREA F**  
EDR No. 08023  
RWA No. 08024  
checked: SNM  
approved: DAB  
sheet: SNM



1 FIRST FLOOR POWER PLAN  
1/8" = 1'-0"

**DEMOLITION NOTES:**

- CONTRACTOR SHALL REMOVE ALL ELECTRICAL EXISTING LIGHTING FIXTURES, DEVICES, PANELS, AND OTHER ELECTRICAL APPARATUS IN AREAS WHERE NEW WORK IS BEING ACCOMPLISHED.
- WHERE EXISTING LIGHTING FIXTURES ARE TO BE REMOVED, CONTRACTOR SHALL REMOVE EXISTING CONDUITS AT BUILDING LINE OF NEW WORK AND REMOVE WIRING BACK TO SOURCE OR NEAREST OUTLET TO REMAIN. REMOVE EXISTING LIGHT FIXTURES AND PROVIDE NEW AS SHOWN ON LIGHTING PLAN.
- WHERE OUTLETS, PANELS, ETC. IN ADJACENT AREAS ARE SERVED BY THROUGH OUTLETS, CONTRACTOR SHALL REMOVE EXISTING CONDUITS AT BUILDING LINE OF NEW WORK AND REMOVE WIRING BACK TO SOURCE OR NEAREST OUTLET TO REMAIN. PROVIDE RECEPTACLES AS SHOWN ON POWER PLAN.



KEY PLAN

TRANSFORMER FOR SENSOR OPERATED FLUORESCENT LIGHTING WITH UNIT. CONNECT IN ACCORDANCE WITH WIRING DIAGRAM FURNISHED WITH UNIT.

4" SQUARE X 2 1/8" DEEP JUNCTION BOX FOR SENSOR OPERATED FLUORESCENT LIGHTING WITH UNIT. POSITIONING OF ELECTRICAL BOX INSTALLATION IS CRITICAL TO PRODUCT PERFORMANCE. INSTALL IN ACCORDANCE WITH INSTALLATION TEMPLATE FURNISHED WITH FLUORESCENT LIGHTING.

4" SQUARE X 2 1/8" DEEP JUNCTION BOX FOR SENSOR OPERATED FLUORESCENT LIGHTING WITH UNIT. POSITIONING OF ELECTRICAL BOX INSTALLATION IS CRITICAL TO PRODUCT PERFORMANCE. INSTALL IN ACCORDANCE WITH INSTALLATION TEMPLATE FURNISHED WITH FLUORESCENT LIGHTING.

PROVIDE JUNCTION BOX IN CEILING IN AN ACCESSIBLE LOCATION AND CONNECT TO DOOR SYSTEM AS REQUIRED BY DATA.

SUPPLY WITH DOOR SYSTEM. DOORS TO OPEN UPON ACTIVATION OF THE ALARM SYSTEM.

CIRCUIT TO TASK LIGHTING.

PROVIDE 10" X 8" BACK BOX FOR TOUCH PANEL. HEIGHT OF PANEL TO BE 48" TO THE CENTERLINE OF PANEL. PROVIDE 1" CONDUIT WITH FULL STRING TO CEILING AND BUSH. EXACT LOCATION TO BE DETERMINED IN THE FIELD WITH THE AV SUPPLIER/ARCHITECT AND OWNERS REPRESENTATIVE.

PROVIDE JUNCTION BOX IN CEILING AND CONNECT TO MOTORIZED PROJECTOR SCREEN. PROVIDE ALL POWER CONNECTIONS IN ACCORDANCE WITH PROJECTOR'S WIRING DIAGRAM.

DISCONNECT SWITCH FOR AHU. MOUNT IN AN ACCESSIBLE LOCATION. EXACT LOCATION TO BE COORDINATED WITH LAYOUT OF MECHANICAL EQUIPMENT IN ROOM. SEE RISER DIAGRAM FOR ELECTRICAL REQUIREMENTS.

MOUNT RECEPTACLE AT COUNTER HEIGHT. WIRING TO BE CONCEALED IN WALL. ROUTE HOMERUNS UNDER RAISED STRUCTURE TO NEAREST FULL HEIGHT PARTITION AND THEN OVERHEAD TO PANEL.

FOR UV LIGHTS, VERIFY EXACT LOCATION AND REQUIREMENTS PRIOR TO ROUGH-IN.

FOR HVAC CONTROLS, VERIFY EXACT LOCATION AND REQUIREMENTS PRIOR TO ROUGH-IN.

SURFACE MOUNT RECEPTACLE ON COLUMN. RUN WIRING EXPOSED IN RACKWAYS. TYPICAL FOR ENTIRE AREA. EXACT LOCATION TO BE DETERMINED IN THE FIELD WITH THE AV SUPPLIER/ARCHITECT AND OWNERS REPRESENTATIVE.

ROUTE 1 1/2" CONDUIT FROM CABLE CLUTDY IN TABLE UNDER RAISED FLOOR TO JUNCTION BOX IN EQUIPMENT RACK. EXACT LOCATION TO BE DETERMINED IN THE FIELD WITH THE AV SUPPLIER/ARCHITECT AND OWNERS REPRESENTATIVE.

APPROXIMATE LOCATION OF FLOOR PENETRATIONS FOR CONNECTIONS TO CABLE CLUTDY. CABLE CLUTDY TO BE PROVIDED BY EQUIPMENT SUPPLIER. COORDINATE EXACT LOCATION IN THE FIELD WITH THE AV SUPPLIER/ARCHITECT AND OWNERS REPRESENTATIVE.

PROVIDE JUNCTION BOX IN LOCATION AS REQUIRED PER IFC. FOR DATA, PROVIDE 1 1/2" CONDUIT WITH FULL STRING TO ABOVE CEILING AND BUSH. EXACT LOCATION TO BE DETERMINED IN THE FIELD WITH THE AV SUPPLIER/ARCHITECT AND OWNERS REPRESENTATIVE.

PROVIDE RECEPTACLE AT HEIGHT AS REQUIRED TO ACCOMMODATE TV. EXACT LOCATION TO BE DETERMINED IN THE FIELD WITH THE ARCHITECT AND OWNERS REPRESENTATIVE.

MOUNT RECEPTACLE ON UNDERSIDE OF TABLE AND CONNECT TO POWER CONNECTIONS FOR CABLE CLUTDY.

**SPECIFIC NOTES (THIS SHEET ONLY):**

- ROUTE WIRING BELOW RAISED FLOOR TO RECEPTACLES ON SAME CIRCUIT AT FULL HEIGHT PARTITION OR IF HOMERUN TO FULL HEIGHT PARTITION AND THEN OVERHEAD TO PANEL.
- ROUTE CONDUIT WITH FULL STRING TO NEAREST FULL HEIGHT PARTITION AND THEN ROUTE OVER HEAD TO CABLE TRAY. SEE SYSTEMS PLAN FOR CABLE TRAY ROUTING.
- FOR REFRIGERATOR, MOUNT RECEPTACLE 95" A.F.F.
- MICROWAVE MOUNTED IN SHELF ABOVE COUNTER. MOUNT RECEPTACLE APPROXIMATELY 72" A.F.F. VERIFY EXACT HEIGHT AND LOCATION FROM TOUGH-IN.
- MOUNT RECEPTACLE 6" ABOVE COUNTER OR BACKSPASH IF BACKSPASH IS INSTALLED.
- FOR VENDING MACHINE - MOUNT RECEPTACLE 36" A.F.F.
- UNDER COUNTER TASK LIGHTING. (TYPICAL FOR ALL WORKSTATIONS. ALL TASK LIGHTING TO BE ON SAME CIRCUIT. WIRING TO BE ON CONCEALED, ROUTED UNDER RAISED FLOOR TO FULL HEIGHT PARTITION AND THEN OVERHEAD TO PANEL.
- PROVIDE RECEPTACLE IN CEILING FOR PROJECTOR.
- FOR EQUIPMENT RACK.
- PROVIDE JUNCTION BOX AT HEIGHT AS REQUIRED BY EQUIPMENT SUPPLIER WITH 2" CONDUIT ROUTED TO ABOVE CEILING AND BUSH. PROVIDE FULL STRING.
- SWITCH FOR PROJECTOR SCREEN. EXACT LOCATION SWITCH TO BE DETERMINED IN THE FIELD WITH THE AV SUPPLIER, ARCHITECT AND OWNERS REPRESENTATIVE.
- PROVIDE TWO GANG JUNCTION BOX AT 18" WITH 1" CONDUIT TO CEILING AND BUSH. PROVIDE FULL STRING. EXACT LOCATION TO BE DETERMINED IN THE FIELD WITH THE AV SUPPLIER, ARCHITECT AND OWNERS REPRESENTATIVE.

**SPECIFIC ALTERNATE NOTES: (THIS SHEET)**

DUCT ALTERNATE NO. 1 - ELECTRICAL CONTRACTOR TO ONLY PROVIDE ELECTRICAL AND DATA CONNECTIONS TO PRE-WIRED PARTITIONS. PARTITIONS WILL BE EQUIPPED WITH TASK LIGHTS. ELECTRICAL CONTRACTOR TO COORDINATE WITH FURNITURE MANUFACTURER TO ENSURE THE ELECTRICAL CONNECTIONS ARE AS SHOWN AND PROVIDE ADEQUATE GROUNDING FOR EQUIPMENT.

DUCT ALTERNATE NO. 2 - ELECTRICAL CONTRACTOR TO ONLY PROVIDE ELECTRICAL AND DATA CONNECTIONS TO PRE-WIRED PARTITIONS. PARTITIONS WILL BE EQUIPPED WITH TASK LIGHTS. ELECTRICAL CONTRACTOR TO COORDINATE WITH FURNITURE MANUFACTURER TO ENSURE THE ELECTRICAL CONNECTIONS ARE AS SHOWN AND PROVIDE ADEQUATE GROUNDING FOR EQUIPMENT.

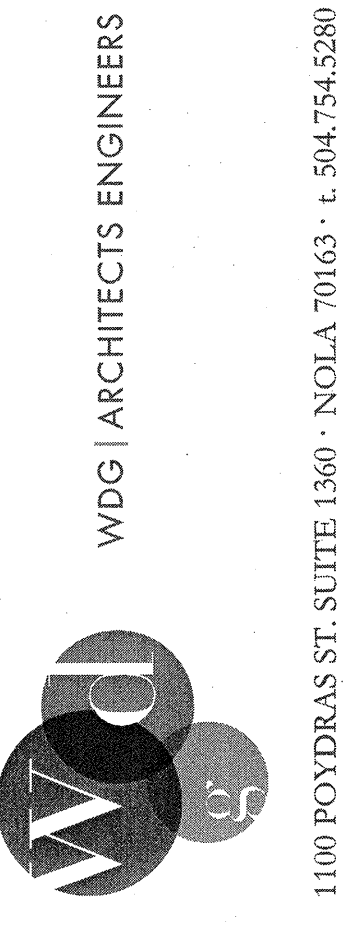
DUCT ALTERNATE NO. 3 - ELECTRICAL CONTRACTOR TO ONLY PROVIDE ELECTRICAL AND DATA CONNECTIONS TO PRE-WIRED PARTITIONS. ELECTRICAL CONTRACTOR TO COORDINATE WITH FURNITURE MANUFACTURER TO ENSURE THE ELECTRICAL CONNECTIONS ARE AS SHOWN AND PROVIDE ADEQUATE GROUNDING FOR EQUIPMENT.

UNOCCUPIED SPACE  
(NOT IN CONTRACT)

SEE SHEET E3.1.3

ADD ALTERNATE No. 2

SEE SHEET E3.1.7



WDG ARCHITECTS ENGINEERS

1100 POYDRAS ST. SUITE 1340 - NOLA, LA 70119 - P. 504.754.5280