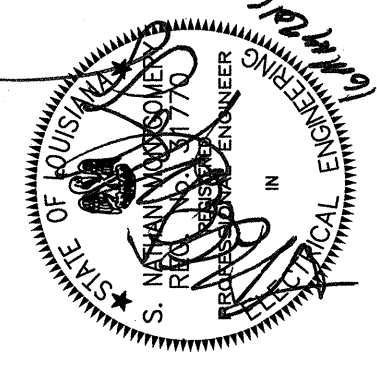


THE ABOVE DRAWINGS AND SPECIFICATIONS ARE THE PROPERTY OF THE ARCHITECT AND NO PART THEREOF IS TO BE REPRODUCED OR TRANSMITTED IN ANY FORM OR BY ANY MEANS, ELECTRONIC OR MECHANICAL, INCLUDING PHOTOCOPYING, RECORDING, OR BY ANY INFORMATION STORAGE AND RETRIEVAL SYSTEM, WITHOUT THE WRITTEN PERMISSION OF THE ARCHITECT. THESE DRAWINGS AND SPECIFICATIONS SHALL BE USED ONLY FOR THE PROJECT FOR WHICH THEY HAVE BEEN PREPARED AND DEVELOPED WITHOUT THE WRITTEN PERMISSION OF THE ARCHITECT. ANY REUSE OF THESE DRAWINGS OR SPECIFICATIONS FOR ANY OTHER PROJECT WITHOUT THE WRITTEN PERMISSION OF THE ARCHITECT IS STRICTLY PROHIBITED. THE ARCHITECT ASSUMES NO LIABILITY FOR THE ACTIONS OF ANY CONTRACTORS OR SUBCONTRACTORS WHOSE WORK IS NOT SHOWN ON THESE DRAWINGS. ANY SUCH WORK SHALL BE THE RESPONSIBILITY OF THE CONTRACTOR. THE ARCHITECT'S OFFICE SHALL NOT BE RESPONSIBLE FOR THE ACTIONS OF ANY CONTRACTORS OR SUBCONTRACTORS WHOSE WORK IS NOT SHOWN ON THESE DRAWINGS. ANY SUCH WORK SHALL BE THE RESPONSIBILITY OF THE CONTRACTOR. THE ARCHITECT'S OFFICE SHALL NOT BE RESPONSIBLE FOR THE ACTIONS OF ANY CONTRACTORS OR SUBCONTRACTORS WHOSE WORK IS NOT SHOWN ON THESE DRAWINGS. ANY SUCH WORK SHALL BE THE RESPONSIBILITY OF THE CONTRACTOR.

**OCHSNER NORTH CAMPUS INTERNAL MEDICINE RELOCATION**  
 OCHSNER MEDICAL CENTER  
 1401 Jefferson Highway  
 Jefferson, LA 70121

Copyright © 2010  
 Eskiew+Dumez+Ripple /  
 Rozas+Ward, Joint Venture  
 Date: 18 MAY 2011  
 ADD #3 13 JANUARY 2010



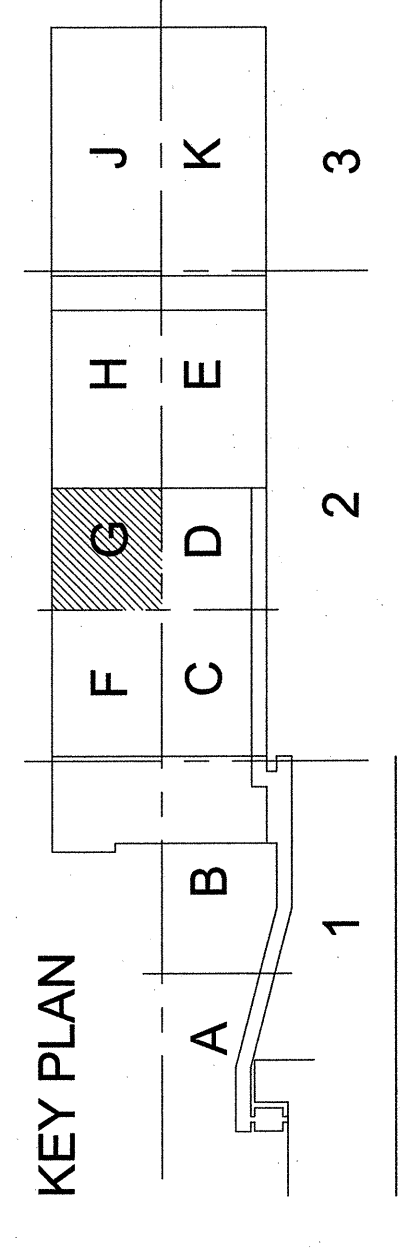
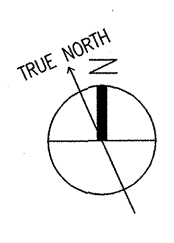
**PAPER**  
 FIRST FLOOR PLAN  
 SECTION 2 - AREA G  
 EDR No. 09223  
 RWA No. 09024  
 drawn: BGM  
 checked: DAB  
 approved: SNM  
 sheet

- SPECIFIC NOTES (THIS SHEET ONLY):**
- ROUTE WIRING BELOW RAISED FLOOR TO RECEPTACLE ON SAME CIRCUIT OR IF HORIZONTAL ROUTE TO NEAREST FULL HEIGHT PARTITION AND THEN OVERHEAD TO PANEL.
  - ROUTE CONDUIT WITH PULL STRING TO NEAREST FULL HEIGHT PARTITION AND THEN ROUTE OVER HEAD TO CABLE TRAY. SEE SYSTEMS PLAN FOR CABLE TRAY ROUTING.
  - FOR REFRIGERATOR, MOUNT RECEPTACLE 36" A.F.F.
  - MICROWAVE - MOUNTED IN SHELF ABOVE COUNTER. MOUNT RECEPTACLE APPROXIMATELY 72" A.F.F. VERIFY EXACT HEIGHT AND LOCATION PRIOR TO ROUGH-IN.
  - MOUNT RECEPTACLE 6" ABOVE COUNTER OR BACKSPLASH IF BACKSPLASH IS INSTALLED.
  - FOR VENDING MACHINE - MOUNT RECEPTACLE 36" A.F.F.
  - FOR UNDER COUNTER REFRIGERATOR.
  - NOT USED
  - COFFINER - ANALYZER AND SAMPLER UNIT (750 VA) AND PRINTERS, 120 VOLT.
  - COFFINER - CYTOLOGY/ANALYSIS UNIT, 120 VOLT.
  - COFFINER - CYTOLOGY/ANALYSIS UNIT, 120 VOLT.
  - FOR 2 SCANNERS, 120 VOLT.
  - FOR PRINTER AND 2 SCANNERS, 120 VOLT.
  - FOR PRINTER, 120 VOLT.
  - PROVIDE 2 RECEPTACLES AND 2 DATA OUTLETS IN FLOOR BOX. RUN CIRCUIT TO NEAREST FULL HEIGHT PARTITION AND THEN RUN OVERHEAD TO HEIGHT PARTITION AND THEN OVERHEAD TO PANEL OR TO RECEPTACLE ON SAME CIRCUIT.
  - MOUNT RECEPTACLE AT COUNTER HEIGHT. WIRING TO BE CONCEALED IN WALL. ROUTE HORIZONTALS UNDER RAISED STRUCTURE TO NEAREST FULL HEIGHT PARTITION AND THEN OVERHEAD TO PANEL OR TO RECEPTACLE ON SAME CIRCUIT.
  - FOR COFFER.
  - FOR FREEZER, 120V
  - ANL2913 - PROVIDE NEMA 16-30K TWISTLOCK RECEPTACLE FOR 4KVA UPS FURNISHED WITH EQUIPMENT. IF UNIT IS A 3KVA UPS PROVIDE 20AMP. VERIFY PRIOR TO ROUGH-IN.
  - WAT0002 - LAB WATER SYSTEM - PROVIDE GFI RECEPTACLE AS SHOWN. VERIFY LOCATION AND EXACT REQUIREMENTS PRIOR TO ROUGH-IN.
  - MOUNT RECEPTACLE AT COUNTER HEIGHT.
  - ANL2921 - PROVIDE 3 FLOOR MOUNTED RECEPTACLES. EXACT LOCATION TO BE DETERMINED IN THE FIELD WITH ARCHITECT AND OWNERS RESPONSIBLE.
  - PROVIDED NEMA 16-20 RECEPTACLE TYPICAL FOR 4.
  - ANL2912 - PROVIDE NEMA 16-30K TWISTLOCK RECEPTACLE FOR 4KVA UPS FURNISHED WITH EQUIPMENT. IF UNIT IS A 3KVA UPS PROVIDE 20AMP. VERIFY PRIOR TO ROUGH-IN.
  - UNDERCOUNTER TASK LIGHTING. SEE LIGHTING SCHEDULE. ALL TASK LIGHTING TO BE WIRED ON THE SAME CIRCUIT. PROVIDE SWITCH AT EACH LOCATION TO OPERATE ALL LIGHTS AT EACH LOCATION TOGETHER.
  - RECESSED GENERATOR RECESSED CIRCUIT BREAKER WITH SHUNT TRIP. PROVIDE 3 CONDUCTOR 4/0S FROM CIRCUIT BREAKER TO JUNCTION BOX BELOW WITH 1/2" NON-TERMINATED METAL MAXIMUM LENGTH. IMPEDANCE NOT TO EXCEED 2 OHMS.
  - JUNCTION BOX BELOW - PROVIDE 1/2" X 1/2" X 4" FLUSH MOUNTED ELECTRICAL WALL BOX. 3/4" FLOOR TO CENTER. PROVIDE 1 1/2" CONDUIT TO GROUND. SURFACE ABOVE AND TO WIRING BELOW.
  - HORIZONTAL SURFACE WIREWAY, 1" X 3 1/2" WITH REM. COVERS. BOTTOM OF WIREWAY 12" A.F.F.. PROVIDE TWO EQUALLY SPACED DIVIDERS THROUGHOUT WIREWAY.
  - PROVIDE 2" GROMMETTED CUT-OUT IN SEPARATE 10" X 10" COVER OF HORIZONTAL WIREWAY, 1-5' ABOVE FINISHED FLOOR.
  - PROVIDE 4" DIAMETER GROMMETTED CUT-OUT IN SEPARATE 10" X 10" COVER OF HORIZONTAL WIREWAY, 1-5' ABOVE FINISHED FLOOR.
  - ALL DRAWINGS AND EXACT LOCATION OF ALL EQUIPMENT AND EQUIPMENT REQUIREMENTS TO BE VERIFIED WITH MANUFACTURERS PROVIDED DRAWINGS PRIOR TO ROUGH-IN AND ADJUST ACCORDINGLY.
  - 120V DEDICATED DUPLEX RECEPTACLE FROM CIRCUIT BREAKER.
  - TRANSFORMER FOR SENSOR OPERATED FLUORESCENT LIGHTING WITH UNIT. CONNECT IN ACCORDANCE WITH WIRING DIAGRAM FURNISHED WITH UNIT.
  - 4" SQUARE X 2 1/8" DEEP JUNCTION BOX FOR SENSOR OPERATED FLUORESCENT LIGHTING FOR URINAL WITH 4" SQUARE BOX RAISED DEVICE COVER. POSITIONING OF ELECTRICAL BOX INSTALLATION IS CRITICAL TO PRODUCT PERFORMANCE. INSTALL IN ACCORDANCE WITH INSTALLATION TEMPLATE FURNISHED WITH FLUORESCENT.
  - 4" SQUARE X 2 1/8" DEEP JUNCTION BOX FOR SENSOR OPERATED FLUORESCENT LIGHTING FOR TOILET WITH 4" SQUARE BOX RAISED DEVICE COVER. POSITIONING OF ELECTRICAL BOX INSTALLATION IS CRITICAL TO PRODUCT PERFORMANCE. INSTALL IN ACCORDANCE WITH INSTALLATION TEMPLATE FURNISHED WITH FLUORESCENT.
  - REMOVE JUNCTION BOX IN AREAS IN AN ACCESSIBLE LOCATION AND CONNECT TO SLIDING DOOR SYSTEM IN ACCORDANCE WITH MANUFACTURERS REQUIREMENTS.
  - SWITCH FOR TRANSFORMER TEG. SEE RISER DIAGRAM

**SPECIFIC ALTERNATE NOTES: (THIS SHEET)**

REMOVE ALTERNATE NOTING. ELECTRICAL CONTRACTOR TO ONLY PROVIDE ELECTRICAL AND DATA CONNECTIONS TO PRE-WIRED PARTITIONS. PARTITIONS WILL BE EQUIPPED WITH TASK LIGHTS. ELECTRICAL CONTRACTOR TO COORDINATE WITH FURNITURE MANUFACTURER TO ENSURE THE ELECTRICAL CONNECTIONS ARE AS SHOWN AND PROVIDE ADEQUATE CIRCUITING FOR EQUIPMENT.

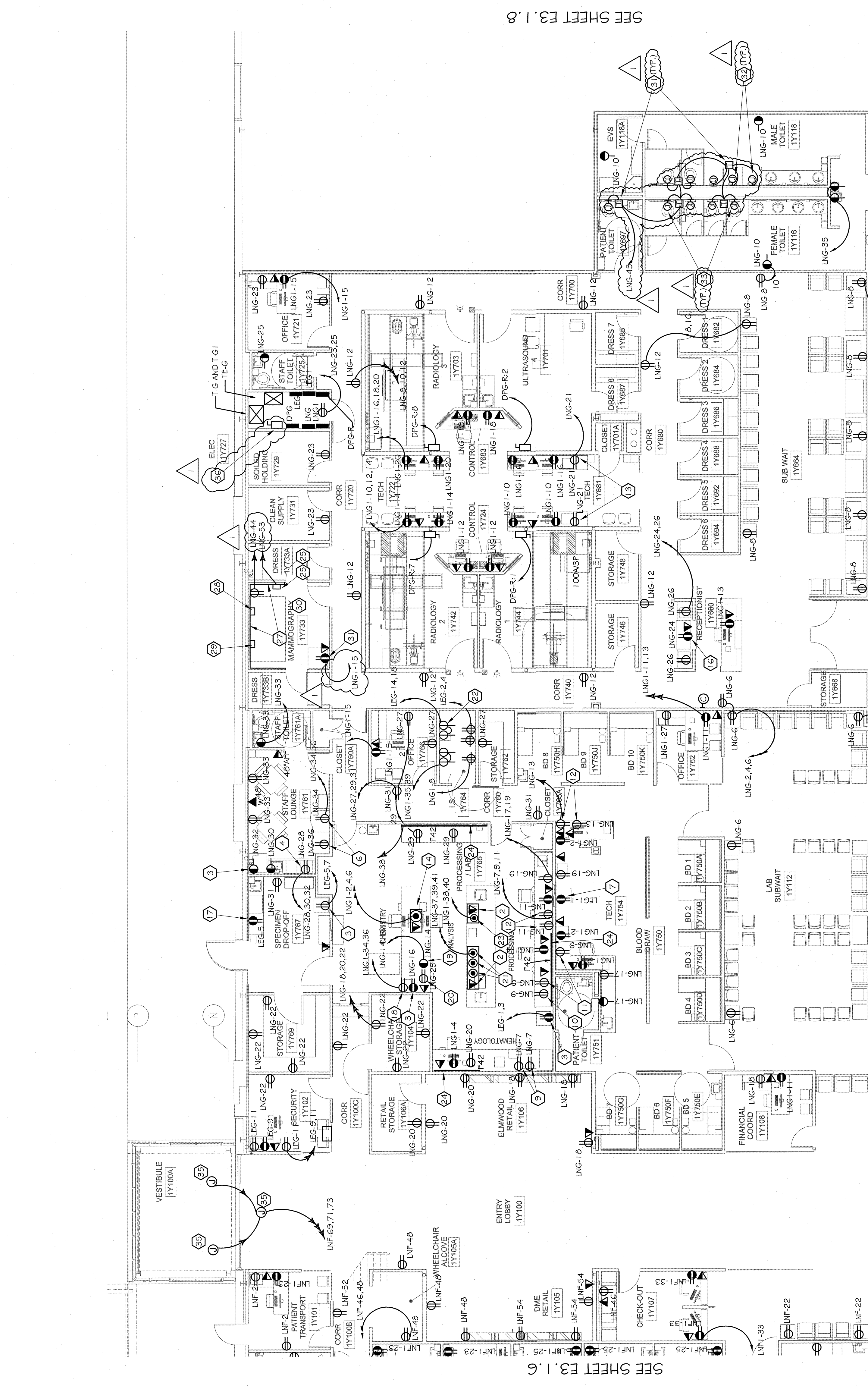
**1 FIRST FLOOR POWER PLAN**  
 3.1.7 SECTION 2 - AREA G  
 1/8" = 1'-0"



WDG | ARCHITECTS ENGINEERS

1100 POYDRAS ST. SUITE 1340 - NOLA 70163 - t. 504.754.5280

- DEMOLITION NOTES:**
- CONTRACTOR SHALL REMOVE ALL EXISTING LIGHTING FIXTURES, PANELS, DEVICES, PANELS, PANELS, COORDINATE WITH ARCHITECT AND OTHER ELECTRICAL APPARATUS IN AREAS WHERE NEW WORK IS BEING ACCOMPLISHED.
  - WHERE EXISTING LIGHTING FIXTURES ARE IN ADJACENT AREAS AND ARE SERVED THROUGH EXISTING CONDUITS AT BUILDING LINE OF NEW WORK AND REMOVE WRING BACK TO SOURCE OR TO LIGHTING PLANS. REMOVE EXISTING LIGHT FIXTURES AND PROVIDE NEW AS SHOWN ON LIGHTING PLANS.
  - WHERE OUTLETS, PANELS, ETC. IN ADJACENT AREAS ARE SERVED BY THROUGH OUTLETS, CONDUITS OR EQUIPMENT AT BUILDING LINE OF NEW WORK AND REMOVE WRING BACK TO SOURCE OR NEAREST OUTLET TO REMAIN. PROVIDE RECEPTACLES AS SHOWN ON POWER PLANS.



SEE SHEET E3.1.8

ADD ALTERNATE No. 2

SEE SHEET E3.1.4