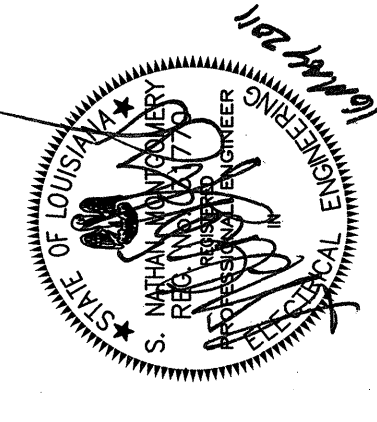


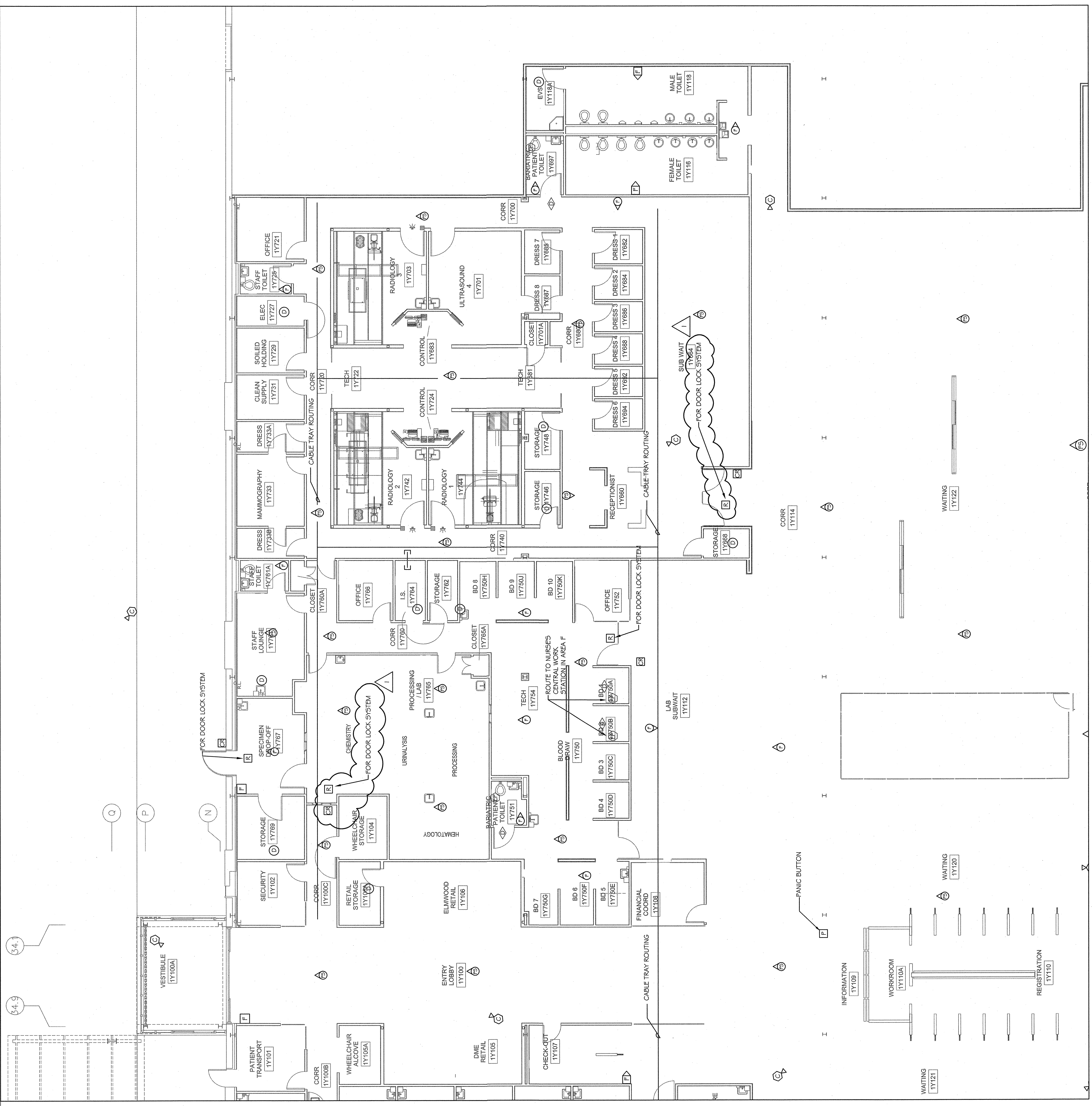
THE ABOVE DRAWINGS AND SPECIFICATIONS AND ALL OTHERS THEREBY ARE THE PROPERTY OF THE ARCHITECT AND NO PART THEREOF SHALL BE REPRODUCED OR TRANSMITTED IN ANY FORM OR BY ANY MEANS, ELECTRONIC OR MECHANICAL, INCLUDING PHOTOCOPYING, RECORDING, OR BY ANY INFORMATION STORAGE AND RETRIEVAL SYSTEM, WITHOUT THE WRITTEN CONSENT OF THE ARCHITECT. THESE DRAWINGS OR SPECIFICATIONS SHALL CONSTITUTE CONTRACT ONLY IN THE EVENT OF A DISPUTE. CONTRACTORS SHALL VERIFY, AND BE RESPONSIBLE FOR, ALL DIMENSIONS AND CONDITIONS OF THE EXISTING CONDITIONS. ANY VARIATIONS FROM THE DIMENSIONS AND CONDITIONS SHOWN ON THESE DRAWINGS MUST BE SUBMITTED TO THE ARCHITECT FOR APPROVAL PRIOR TO PROCEEDING WITH FABRICATION.

**OCHSNER NORTH CAMPUS INTERNAL MEDICINE RELOCATION**  
 OCHSNER MEDICAL CENTER  
 1401 Jefferson Highway  
 Jefferson, LA 70121

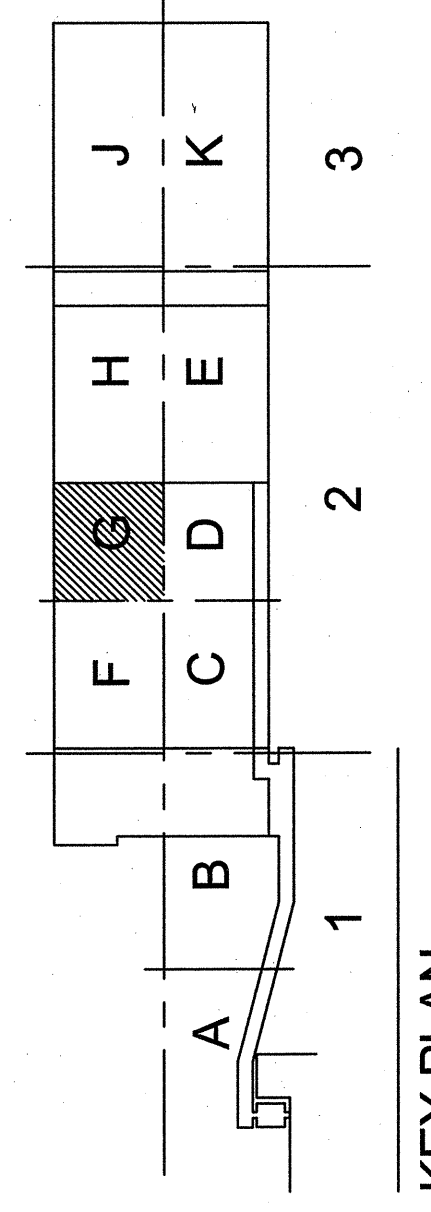
Copyright © 2010  
 Eskew+Dumez+Ripple /  
 Rozas+Ward, Joint Venture  
 Date: 16 MAY 2011  
 ADD #5 17 JANUARY 2011



SYSTEMS  
 FIRST FLOOR PLAN  
 SECTION 2 - AREA G  
 EDR No. 09023  
 RWA No. 09024  
 drawn: BGM  
 checked: DAB  
 approved: SNM  
 sheet



1 FIRST FLOOR SYSTEMS PLAN  
 5.0.5 | 5.0.7 SECTION 2 - AREA G  
 1/8" = 1'-0"



KEY PLAN

WDG | ARCHITECTS ENGINEERS  
 1100 POYDRAS ST., SUITE 1360 - NOLA 70163 - t. 504.754.5280