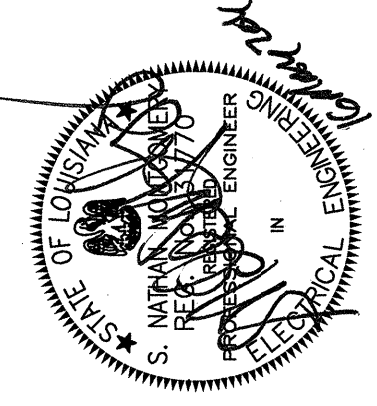


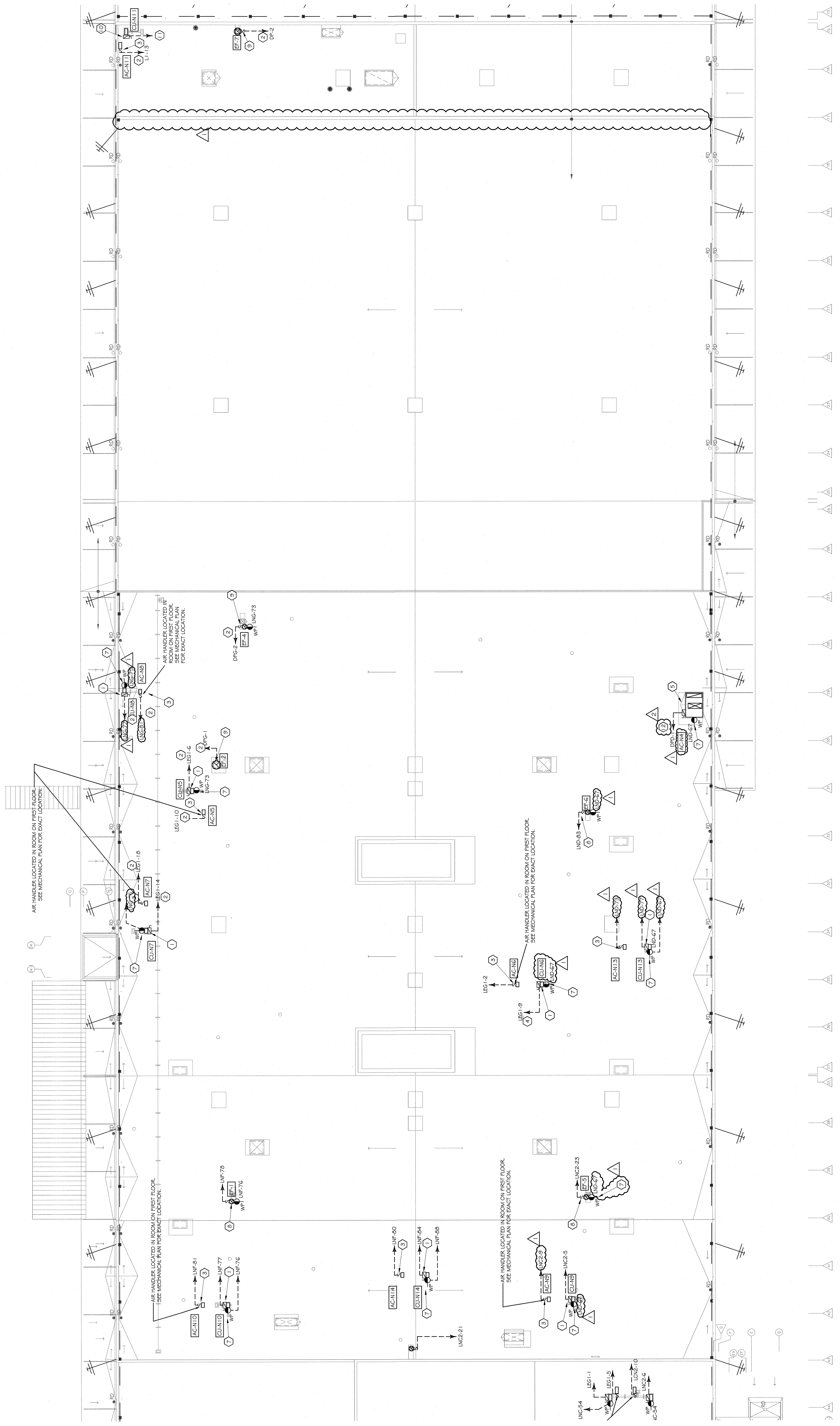
THE ABOVE DRAWINGS AND SPECIFICATIONS AND ALL GENERAL NOTES ARE THE PROPERTY OF THE ARCHITECT AND SHALL REMAIN THE PROPERTY OF THE ARCHITECT. ANY REVISIONS TO THESE DRAWINGS SHALL BE MADE BY THE ARCHITECT AND SHALL BE INDICATED BY A CIRCLED NUMBER AND LETTER. ANY REVISIONS TO THESE DRAWINGS SHALL BE MADE BY THE ARCHITECT AND SHALL BE INDICATED BY A CIRCLED NUMBER AND LETTER. ANY REVISIONS TO THESE DRAWINGS SHALL BE MADE BY THE ARCHITECT AND SHALL BE INDICATED BY A CIRCLED NUMBER AND LETTER.

**OCHSNER NORTH CAMPUS INTERNAL MEDICINE RELOCATION**  
 OCHSNER MEDICAL CENTER  
 1401 Jefferson Highway  
 Jefferson, LA 70121

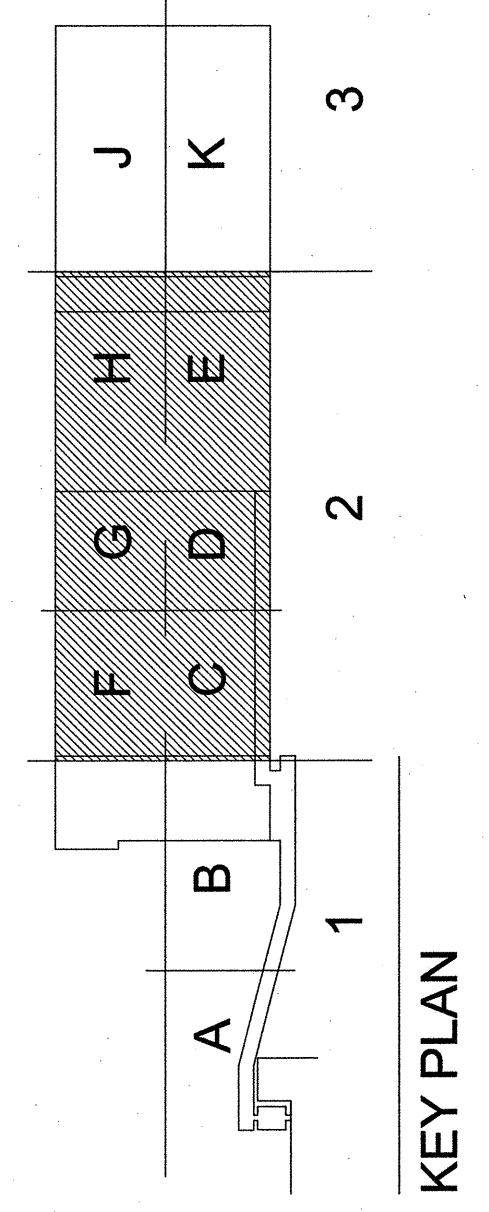
Copyright © 2010  
 Eskew+Dumaz+Ripple / Rozas-Ward, Joint Venture  
 Date: 16 MAY 2011  
 Add #5: 17 JANUARY 2011  
 V.E. 16 MAY 2011



POWER PLAN SECTION 2  
 EDR No. 09023  
 RWA No. 09024  
 Drawn: BGM  
 Checked: DAB  
 Approved: SNM  
 Sheet



1 ROOF POWER PLAN  
 6.2 SECTION 2  
 1/16" = 1'-0"



SPECIFIC NOTES (THIS SHEET ONLY):

- 1 3#10, 1#1/2 GROUND IN 3/4" CONDUIT.
- 2 3 #10 AND 1 #6, 1 1/2".

SPECIFIC NOTES (THIS SHEET ONLY):

- 1 CONDENSING UNIT, 209V, 1/2. PROVIDE 30A/3P NON-FUSED DISCONNECT SWITCH NEMA 3R FOR SIGHT DISCONNECTING MEANS. CONNECT UNIT WITH 2#1 25 AND 1#1/2 GROUND, IN 1/2" FLEXIBLE LIQUID TIGHT CONDUIT.
- 2 2#1 25 + 1#1/2 GROUND IN 1/2" CONDUIT.
- 3 AIR HANDLING, 209V, 1/2. PROVIDE SWITCH AT UNIT FOR SIGHT DISCONNECTING MEANS.
- 4 2#1 05 + 1#1/2 GROUND IN 3/4" CONDUIT.
- 5 EXHAUST FAN, 120V, 3/4. PROVIDE WEATHERPROOF RECEPTACLE AT UNIT FOR SERVICING. PROVIDE ADEQUATE BRACING FOR SUPPORT.
- 6 3#15 + 1#1/2 GROUND IN 1-1/4" CONDUIT.
- 7 EXHAUST FAN, 120V. PROVIDE SWITCH AT UNIT FOR SIGHT DISCONNECTING MEANS.
- 8 EXHAUST FAN, 480V, 3/4. PROVIDE SWITCH AT UNIT FOR SIGHT DISCONNECTING MEANS.
- 9 PROVIDE 30A/3P NON-FUSED DISCONNECT SWITCH NEMA 3R AND CONNECT TO UNIT AS REQUIRED 3#1 05 + 1#1/2 GROUND, 3/4" FLEXIBLE LIQUID TIGHT CONDUIT.