

## Dammon Engineering

1095 Florida Ave.  
Slidell, LA 70458  
(985) 649-5832  
Fax: (985) 641-5950

FAX NUMBER TRANSMITTED TO: <sup>342-8977</sup>  
(225) 925-4414

TO: Mr. David Blanchard  
DHH Engineering and Architectural Services

FROM: David Dammon

Reference: Ochsner Medical - Kenner

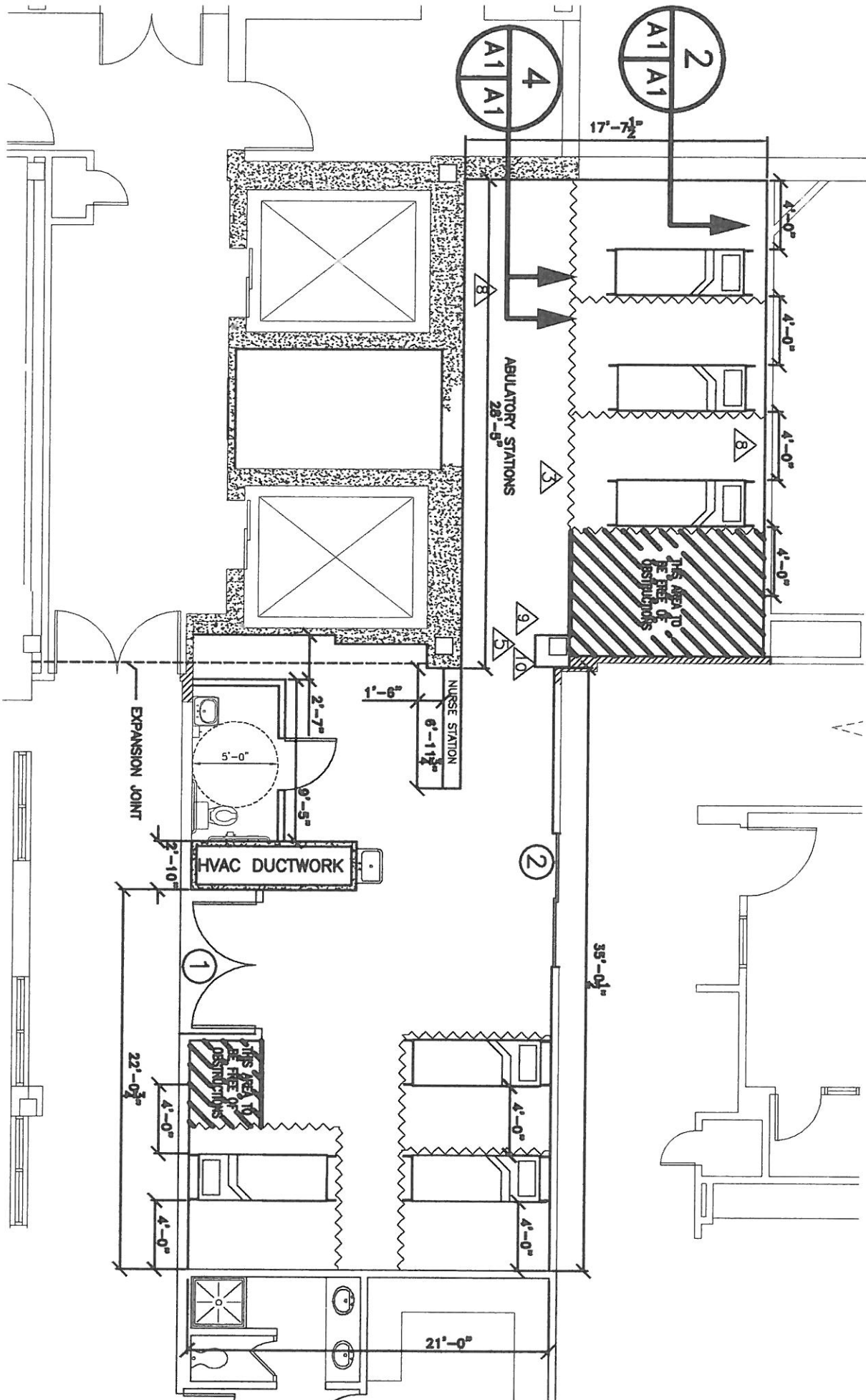
DATE: Nov 9, 2006                      No of pages including cover sheet: 2

Mr. Blanchard,

I have attached a new layout for the Kenner Pre-Operative Holding. This project was reviewed Jul 2005, but they have enlarged the sq. ft. Please let me know if you see something I missed.

Thank you,

David Dammon  
Dammon Engineering



2  
A1 A1

4  
A1 A1

17'-7 1/2"

4'-0"

4'-0"

4'-0"

4'-0"

ABULATORY STATIONS  
28'-5"

THIS AREA TO  
BE FREE OF  
OBSTRUCTIONS

NURSE STATION  
6'-11 1/2"

1'-6"

EXPANSION JOINT

HVAC DUCTWORK

2

35'-0 1/2"

1

22'-0 3/4"

4'-0"

4'-0"

21'-0"

A