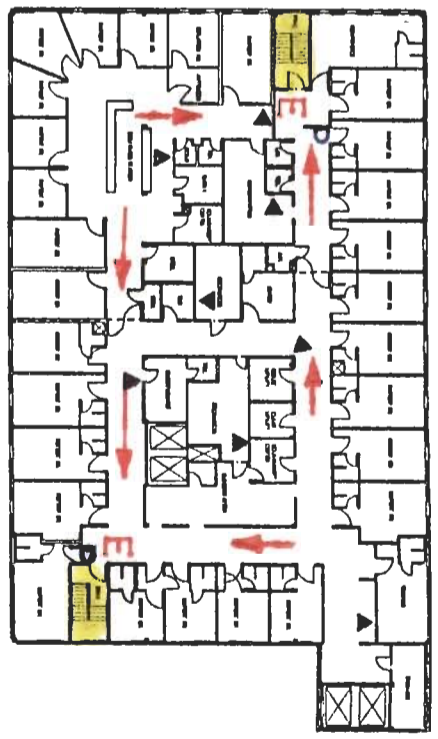
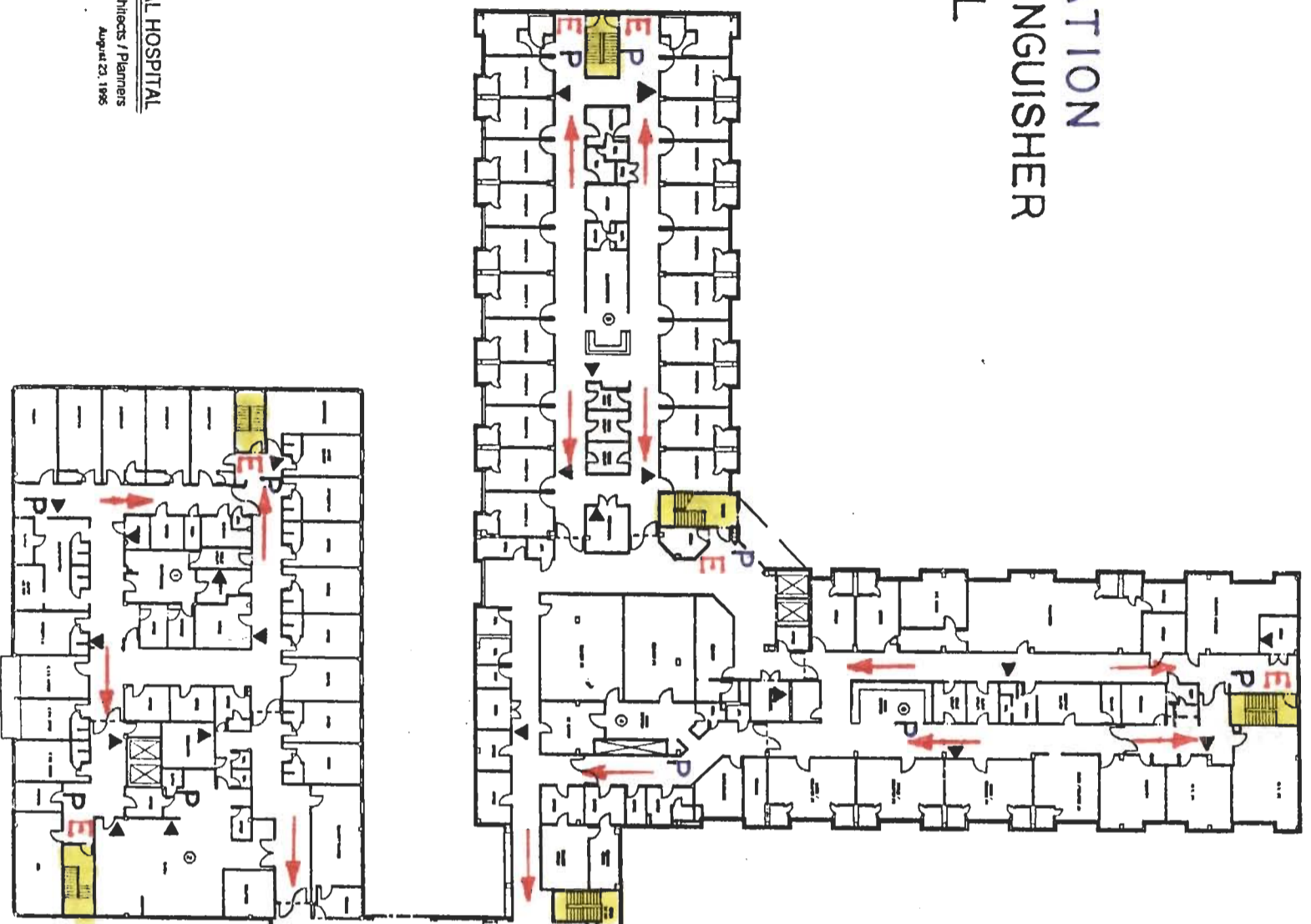


- E = EXIT**
- P = PULL STATION**
- ▲ = FIRE EXTINGUISHER**
- = STAIRWELL**

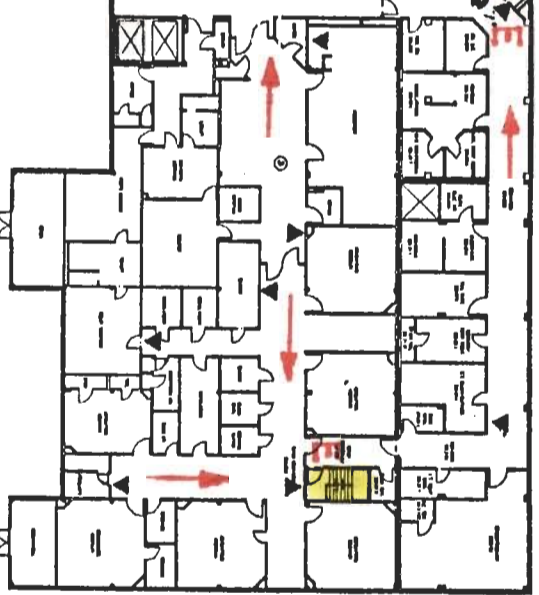
**SMOKE COMPARTMENTS**

SMOKE COMPARTMENTS ARE IDENTIFIED BY A DASHED LINE. ROOMS WITHIN SMOKE COMPARTMENTS ARE IDENTIFIED BY A DASHED LINE. ROOMS WITHIN SMOKE COMPARTMENTS ARE IDENTIFIED BY A DASHED LINE. ROOMS WITHIN SMOKE COMPARTMENTS ARE IDENTIFIED BY A DASHED LINE. ROOMS WITHIN SMOKE COMPARTMENTS ARE IDENTIFIED BY A DASHED LINE.



3 3RD FLOOR PLAN

- TWO SMOKE COMPARTMENTS**
- ① AREA = 6,335 sq. ft.
  - ② AREA = 7,775 sq. ft.



2 2ND FLOOR PLAN

- SIX SMOKE COMPARTMENTS**
- ① AREA = 8,508 sq. ft.
  - ② AREA = 5,144 sq. ft.
  - ③ AREA = 10,503 sq. ft.
  - ④ AREA = 11,400 sq. ft.
  - ⑤ AREA = 9,977 sq. ft.
  - ⑥ AREA = 2,923 sq. ft.



Key Plan of wing

You are here

Arrow to closet exit

Orientation when standing in front  
of sign Left/Right

ALL EXIT IN Red

LEGEND

△ Pull Box

EXIT

☞ FIRE EXTINGUISHER