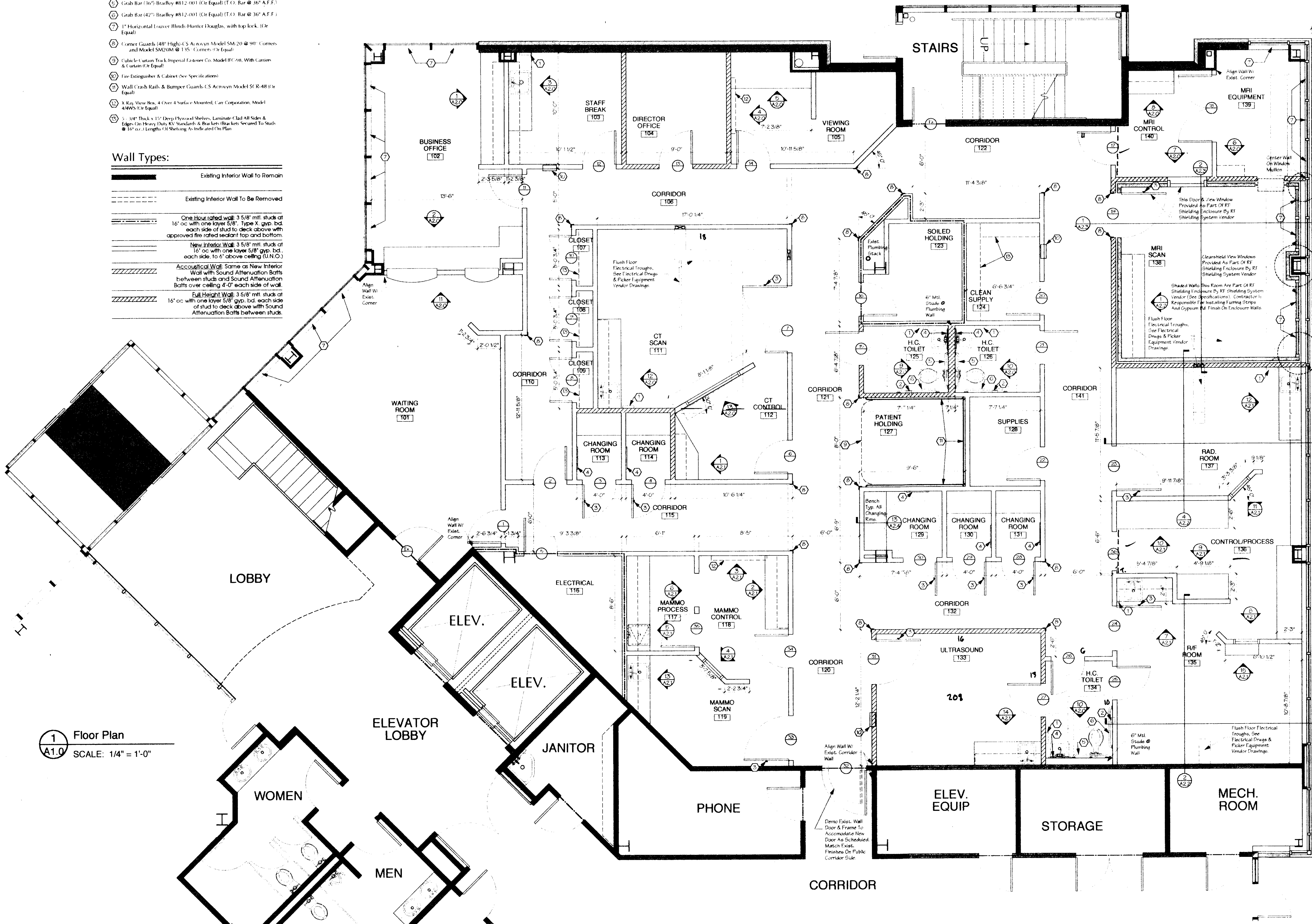


Key Notes:

- 1 Paper Towel Dispenser Bradley #250-15 (Or Equal) ? Roll Feed - See hospital standard!
- 2 Toilet Paper Dispenser Bradley #5402 (Or Equal)
- 3 Robe Hook Mounted At 6'-0" A.F.F. Bradley #9124 (Or Equal)
- 4 Channel Framed Mirror 24" x 16" Bradley #781 (Or Equal)
- 5 Grab Bar 36" Bradley #812-001 (Or Equal) (T.O. Bar @ 36" A.F.F.)
- 6 Grab Bar 42" Bradley #812-001 (Or Equal) (T.O. Bar @ 36" A.F.F.)
- 7 1" Horizontal Louver Blinds-Hunter Douglas, with top lock. (Or Equal)
- 8 Corner Guards 48" High CS Acronyn Model SM-20 @ 90° Corners and Model SM-DUM @ 135° Corners (Or Equal)
- 9 Cubicle Curtain Track Imperial Lasker Co. Model HC-98, With Carriers & Curtain (Or Equal)
- 10 Fire Extinguisher & Cabinet (See Specifications)
- 11 Wall Crash Rail & Bumper Guards CS Acronyn Model SR-48 (Or Equal)
- 12 X Key View Box, 4 Over 4 Surface Mounted, Can Corporation, Model 4400 (Or Equal)
- 13 1" x 1/4" Thick x 15' Deep Phosor Shelves, Luminate Clad All Sides & Edges (On Heavy Duty KV Standards & Brackets-Brackets Secured To Studs @ 16" o.c.) Lengths Of Shelving As Indicated On Plan

Wall Types:

- Existing Interior Wall to Remain
- Existing Interior Wall to Be Removed
- One Hour Rated Wall: 3 5/8" mtl. studs at 16" o.c. with one layer 5/8" Type X gyp. bd. each side of stud to deck above with approved fire rated sealant top and bottom.
- New Interior Wall: 3 5/8" mtl. studs at 16" o.c. with one layer 5/8" gyp. bd. each side to 6" above ceiling (U.N.O.)
- Acoustical Wall: Same as New Interior Wall with Sound Attenuation Batts between studs and Sound Attenuation Batts over ceiling 4'-0" each side of wall.
- Full Height Wall: 3 5/8" mtl. studs at 16" o.c. with one layer 5/8" gyp. bd. each side of stud to deck above with Sound Attenuation Batts between studs.



1 Floor Plan
A1.0 SCALE: 1/4" = 1'-0"



CAMPO ARCHITECTS
307 TCHOUPTOULAS STREET
SUITE 303
NEW ORLEANS, LA 70130
504-598-4440
jcampo@campo.com

SLIDELL MEMORIAL HOSPITAL
DIAGNOSTIC IMAGING CENTER
FOUNDERS MEDICAL BUILDING

ALL RIGHTS RESERVED. NOT TO BE REPRODUCED OR TRANSMITTED IN ANY FORM OR BY ANY MEANS, ELECTRONIC OR MECHANICAL, INCLUDING PHOTOCOPYING, RECORDING, OR BY ANY INFORMATION STORAGE AND RETRIEVAL SYSTEM.

DATE	ISSUED BY	LINE	REVISION/REASON
6/24/99	Client		PRELIMINARY
7/2/99	Client		SD Approval
8/17/99	Client		50% Review
9/10/99	Client		75% Review
9/20/99	Client		95% Review

DATE	BY	DESCRIPTION

PROGRESS PRINT
NOT FOR CONSTRUCTION
PARTIAL RELEASE
THIS DRAWING IS PARTIALLY RELEASED BY THE ARCHITECT FOR CONSTRUCTION OF THE PROJECT ONLY.

FULL RELEASE
THIS DRAWING IS FULLY RELEASED BY THE ARCHITECT FOR CONSTRUCTION OF THE PROJECT ONLY.

JOB NUMBER:
9740.10
DRAWN BY:
RSS
CHECKED BY:
JTC