

Parking Analysis

Existing Phase I Parking = 280 Spaces
 Proposed Phase I Parking = 269 Spaces
 Proposed Phase II Parking = 286 Spaces

Total Phase I & II Parking = 555 Spaces

MOB III Required Parking

Total Required Parking = 270 Spaces
 Required Handicapped Parking = 7 Spaces
 Required Van Parking = 1 Space

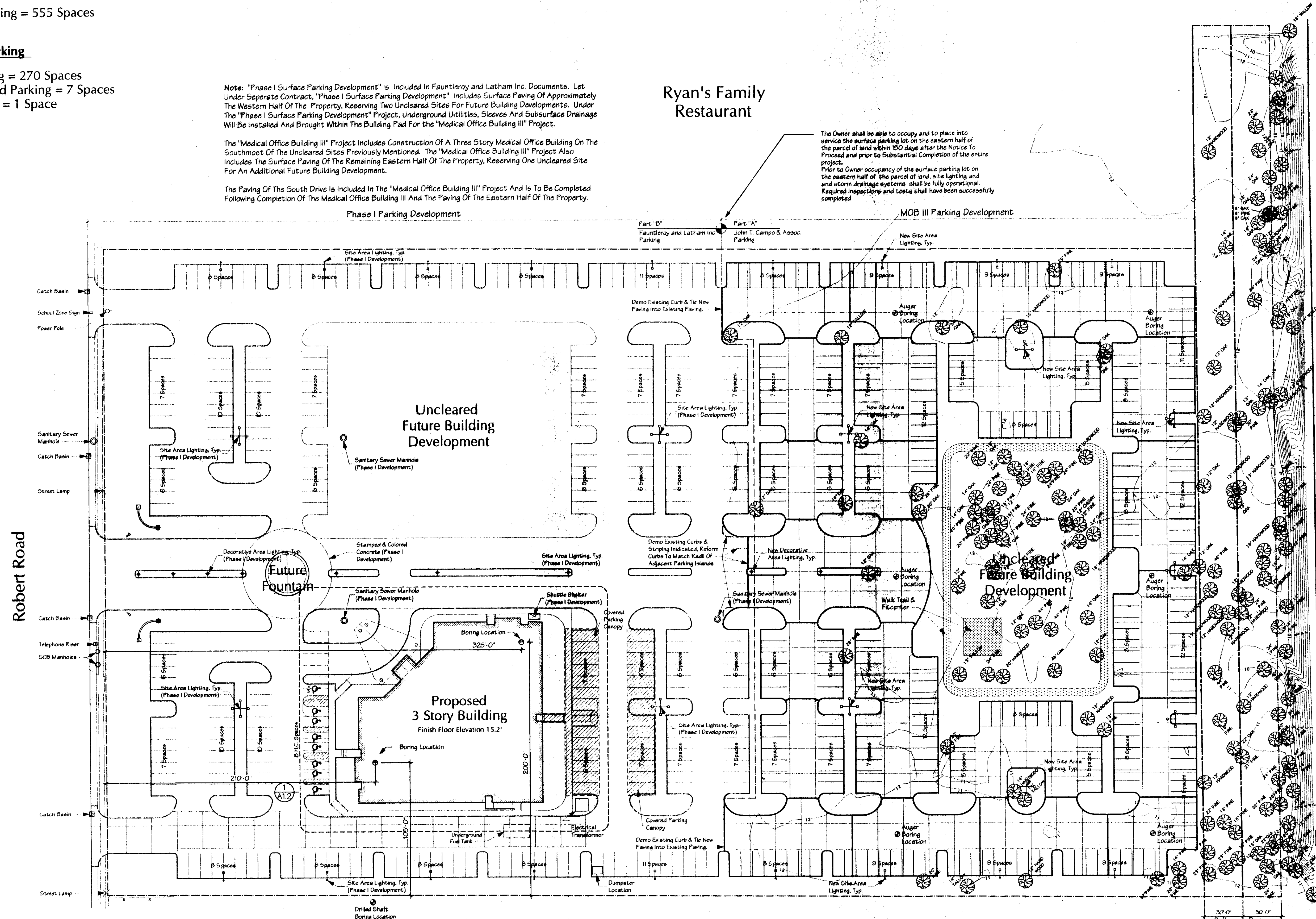
Note: "Phase I Surface Parking Development" is included in Fauntleroy and Latham Inc. Documents. Let Under Separate Contract. "Phase I Surface Parking Development" Includes Surface Paving Of Approximately The Western Half Of The Property, Reserving Two Uncleared Sites For Future Building Developments. Under The "Phase I Surface Parking Development" Project, Underground Utilities, Sleeves And Subsurface Drainage Will Be Installed And Brought Within The Building Pad For The "Medical Office Building III" Project.

The "Medical Office Building III" Project Includes Construction Of A Three Story Medical Office Building On The Southmost Of The Uncleared Sites Previously Mentioned. The "Medical Office Building III" Project Also Includes The Surface Paving Of The Remaining Eastern Half Of The Property, Reserving One Uncleared Site For An Additional Future Building Development.

The Paving Of The South Drive Is Included In The "Medical Office Building III" Project And Is To Be Completed Following Completion Of The Medical Office Building III And The Paving Of The Eastern Half Of The Property.

Ryan's Family Restaurant

The Owner shall be able to occupy and to place into service the surface parking lot on the eastern half of the parcel of land within 150 days after the Notice To Proceed and prior to Substantial Completion of the entire project. Prior to Owner occupancy of the surface parking lot on the eastern half of the parcel of land, site lighting and storm drainage systems shall be fully operational. Required inspections and tests shall have been successfully completed.



1 Site Plan
 A1.1 SCALE: 1" = 40'-0"



D.I.S.A. Complex

W 14 Canal

ISSUE DATES

DATE	BY	REVISION

REVISIONS

DATE	BY	REVISION

PROPOSED PRINT
 NOT FOR CONSTRUCTION
PERMIT TO CONSTRUCT
 HEREON IS GRANTED BY THE ARCHITECT OR CONTRACTOR

FULL RELEASE
 THIS DRAWING IS FULLY RELEASED BY THE ARCHITECT OR CONTRACTOR FOR THE PROJECT

ALL RIGHTS RESERVED
 NOT TO BE REPRODUCED OR TRANSMITTED IN ANY FORM OR BY ANY MEANS, ELECTRONIC OR MECHANICAL, INCLUDING PHOTOCOPYING, RECORDING, OR BY ANY INFORMATION STORAGE AND RETRIEVAL SYSTEM.
 COPYRIGHT © JOHN CAMPO & ASSOC.
 INC. 1992

JOB NUMBER
 9740

DRAWN BY
 RSE

CHECKED BY
 RSE

Site Plan
A1.1