

PLUMBING FIXTURE SCHEDULE

MARK	REF	FIXTURE	TYPE	SIZE	MANUFACTURER & MODEL NO.	COLOR	CARRIER	CONNECTIONS	REMARKS
WC	WC1	WATER CLOSET	FLR MND	16"	AMERICAN STANDARD	WHITE	---	3"	PROVIDE W/ WHITE CLOSED FRONT ELONGATED SEAT, 12.10
WC	WC2	WATER CLOSET	FLR MND	16"	AMERICAN STANDARD	WHITE	---	3"	PROVIDE W/ WHITE CLOSED FRONT ELONGATED SEAT, 12.10
WC-1	WC1A	WATER CLOSET	FLR MND	16"	AMERICAN STANDARD	WHITE	---	3"	CHURCH MODEL #136 (1.6 GAL PER FLUSH), NOTE 12.10, 12
WC-2	WC1A	WATER CLOSET	FLR MND	16"	AMERICAN STANDARD	WHITE	---	3"	PROVIDE W/ OSGINITE MODEL #95-SS SEAT & SLOAN MODEL 111 1/8 FLUSH VALVE (1.5 GAL PER FLUSH), NOTE 12.10
UR	UR1	URINAL	WALL	16"	AMERICAN STANDARD	WHITE	---	2"	RECORD FLUSH VALVE (1.5 GAL PER FLUSH), NOTE 12.10, 12
L-1	L-1	LAVATORY	WALL	16"	AMERICAN STANDARD	WHITE	---	2"	PROVIDE SLOAN ROVAL 186-1 FLUSH VALVE (1.0 GAL PER FLUSH), NOTE 11
L-2	L-1	LAVATORY	WALL	16"	AMERICAN STANDARD	WHITE	---	2"	PROVIDE W/ AMERICAN STANDARD MODEL 2385.400 TRIM & SLOAN ROVAL 186-1 FLUSH VALVE (1.0 GAL PER FLUSH), NOTE 11
NOT USED	L-1	LAVATORY	WALL	16"	AMERICAN STANDARD	WHITE	---	2"	PROVIDE W/ AMERICAN STANDARD MODEL 2385.400 TRIM & SLOAN ROVAL 186-1 FLUSH VALVE (1.0 GAL PER FLUSH), NOTE 11
TUB-1	TB1H	BATH TUB & SHOWER	WALL	60" x 30"	AMERICAN STANDARD	WHITE	---	1 1/2"	PROVIDE W/ AMERICAN STANDARD MODEL 2385.400 TRIM & SLOAN ROVAL 186-1 FLUSH VALVE (1.0 GAL PER FLUSH), NOTE 11
SH	TB1AH	SHOWER	WALL	60" x 30"	AMERICAN STANDARD	WHITE	---	1 1/2"	PROVIDE W/ AMERICAN STANDARD MODEL 2385.400 TRIM & SLOAN ROVAL 186-1 FLUSH VALVE (1.0 GAL PER FLUSH), NOTE 11
NOT USED	SK1	SINK	WALL	22" x 21"	AMERICAN STANDARD	---	---	2"	PROVIDE W/ CHICAGO MODEL 897 ROUGH FINISH & STEEN MODEL AL-1-A
MS	SK1	SINK	WALL	22" x 21"	AMERICAN STANDARD	---	---	2"	PROVIDE W/ CHICAGO MODEL 897 ROUGH FINISH & STEEN MODEL AL-1-A
MS	SK2	SINK	WALL	22" x 21"	AMERICAN STANDARD	---	---	2"	PROVIDE W/ CHICAGO MODEL 897 ROUGH FINISH & STEEN MODEL AL-1-A
MS	SK3	SINK	WALL	22" x 21"	AMERICAN STANDARD	---	---	2"	PROVIDE W/ CHICAGO MODEL 897 ROUGH FINISH & STEEN MODEL AL-1-A
MS	SK4	SINK	WALL	22" x 21"	AMERICAN STANDARD	---	---	2"	PROVIDE W/ CHICAGO MODEL 897 ROUGH FINISH & STEEN MODEL AL-1-A
MS	SK5	SINK	WALL	22" x 21"	AMERICAN STANDARD	---	---	2"	PROVIDE W/ CHICAGO MODEL 897 ROUGH FINISH & STEEN MODEL AL-1-A
MS	SK6	SINK	WALL	22" x 21"	AMERICAN STANDARD	---	---	2"	PROVIDE W/ CHICAGO MODEL 897 ROUGH FINISH & STEEN MODEL AL-1-A
D.F.	EMC	EMERGENCY EYE WASH	---	---	---	---	---	3"	PROVIDE W/ JUST MODEL JOKR-5 TRIM
FD	WB	WASHER	---	---	---	---	---	3"	PROVIDE W/ JUST MODEL JOKR-5 TRIM
SHWR	---	SHOWER	---	---	---	---	---	2"	PROVIDE W/ AMERICAN STANDARD MODEL 2385.400 TRIM

NOTES:

- PROVIDE WITH CHROME ANGLE STOP(S) AND SUPPLY(S).
- PROVIDE 1 1/2" OF SET TAIL PIECE.
- PROVIDE 1 1/2" OF SET TAIL PIECE.
- PROVIDE HAND-CAP PIPE INSULATION KIT ON EXPOSED CW/HW AND WASTE PIPING, EQUAL TO TRUBERO LAVAGUARD #101 W/ #105
- OFF-SET TAIL PIECE.
- PROVIDE 1 1/2" HANDHELD HEATER TRAP.
- PROVIDE W/ TRAP PRIMER SYSTEM. INSTALL VALVE IN NEAREST PROPERLY SIZED CW LINE OF CONSISTENT USAGE. PROVIDE ACCESS TO VALVES FOR MAINTENANCE. (SEE 15450 FOR PUMPING TRIM INFORMATION).
- PROVIDE W/ TRAP PRIMER SYSTEM. INSTALL VALVE IN NEAREST PROPERLY SIZED CW LINE OF CONSISTENT USAGE. PROVIDE ACCESS TO VALVES FOR MAINTENANCE. (SEE 15450 FOR PUMPING TRIM INFORMATION).
- TO MOUNT SHOWER HEAD @ 72" ABOVE SHOWER FLOOR.
- REFER PLUMBING PLANS FOR RIGHT OR LEFT HAND CONFIGURATIONS.

KEYNOTES

KEYNOTES	GENERAL NOTES
1. DOMESTIC WATER BUILDING MAINS ROUTED IN CORRIDOR CEILING.	1. CONTRACTOR TO FIELD VERIFY LOCATION OF ALL UTILITIES PRIOR TO START OF WORK.
2. FORMED IN SLAB TRENCH DRAIN.	2. ALL WORK SHALL COMPLY WITH ALL APPLICABLE LOCAL, STATE, AND NATIONAL CODES.
3. EMERGENCY EYE WASH FIXTURE.	3. CONTRACTOR SHALL PROVIDE TRAP SEAL PRIMERS, FIELD VERIFY LOCATION OF TRAP PRIMER VALVE IN ADEQUATELY SIZED LINE WITH CONSISTENT USAGE. PLACE VALVE IN ACCESSIBLE LOCATION FOR MAINTENANCE.
4. DOMESTIC WATER HEATERS.	4. REFER TO MANUFACTURER EQUIPMENT CUT-SHEETS FOR FIXTURE MOUNTING DIMENSIONS.
5. NOT USED.	5. SLOPE SANITARY LINES AS FOLLOWS: 4" OR LESS ----- 1/4" PER FOOT (MIN.) GREATER THAN 4" ----- 1/8" PER FOOT (MIN.)
6. DOMESTIC WATER CHEMICAL INJECTION SYSTEM (WHERE REQUIRED).	6. PROVIDE FIRE STOPPING AS REQUIRED. REFER ARCH. DRAWINGS FOR FURTHER INFORMATION.
7. 3" DOMESTIC WATER ENTRY W/ SHUT-OFF VALVE IN VERTICAL.	7. CONTRACTOR TO PROVIDE BACKFLOW PREVENTION DEVICE AS PER ALL ICE MACHINES, SODA DISPENSERS & GOVERNING CODES.
8. CENTRAL TOILET PLUMBING RISER IN CHASE.	
9. 1/2" DOMESTIC WATER RISER FOR ICE MACHINE.	
10. 6" SPRINKLER RISER IN STAIRWELL.	

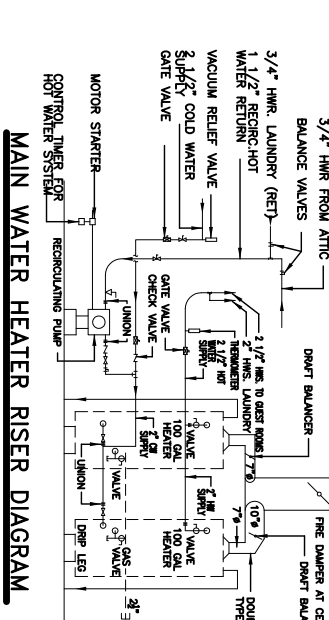
SPRINKLER SYSTEM NOTES:

- SPRINKLER SYSTEM CONTRACTOR SHALL BE LICENSED IN STATE OF MISSISSIPPI.
- SPRINKLER SYSTEM DESIGN SHALL INCLUDE ATTIC AREAS. COORDINATE WITH ELECTRICAL CONTRACTOR TO PROVIDE HEAT FOR ATTIC TO PREVENT ATTIC TEMPERATURE FROM DROPPING BELOW 40° F WHEN OUTSIDE TEMPERATURE IS 20° F.

NOTES:

- ALL COLD AND HOT WATER LINES TO HAVE CIRCUIT SETTERS. PROVIDE SHOP DRAWINGS FOR BUILDING. WATER SYSTEM SHOWING ALL VALVES, CIRCUIT SETTERS, ETC.
- CONTRACTOR SHALL PROVIDE FREE SPRINKLER CONTRACTOR WITH 6" FLANGED STUB UP AT LOCATION TO BE DETERMINED IN FIELD.
- INSULATE HOT WATER LINES FROM HOT WATER HEATER TO 2ND FLOOR.
- INSULATE ALL HOT WATER LINES IN 2ND FLOOR CEILING.
- INSULATE TOTAL COLD WATER SYSTEM.
- PIPE INSULATION SHALL MEET ALL NATIONAL CODES FOR PRODUCT.
- TYPE AND INSTALLATION PRACTICES.
- EACH RISER SHALL BE FLOW CONTROLLED BY A BRASS CIRCUIT SETTER.
- SHUT OFF VALVES AT EACH RISER.
- NO PIPING TO PENETRATE EXHAUST CHASE.

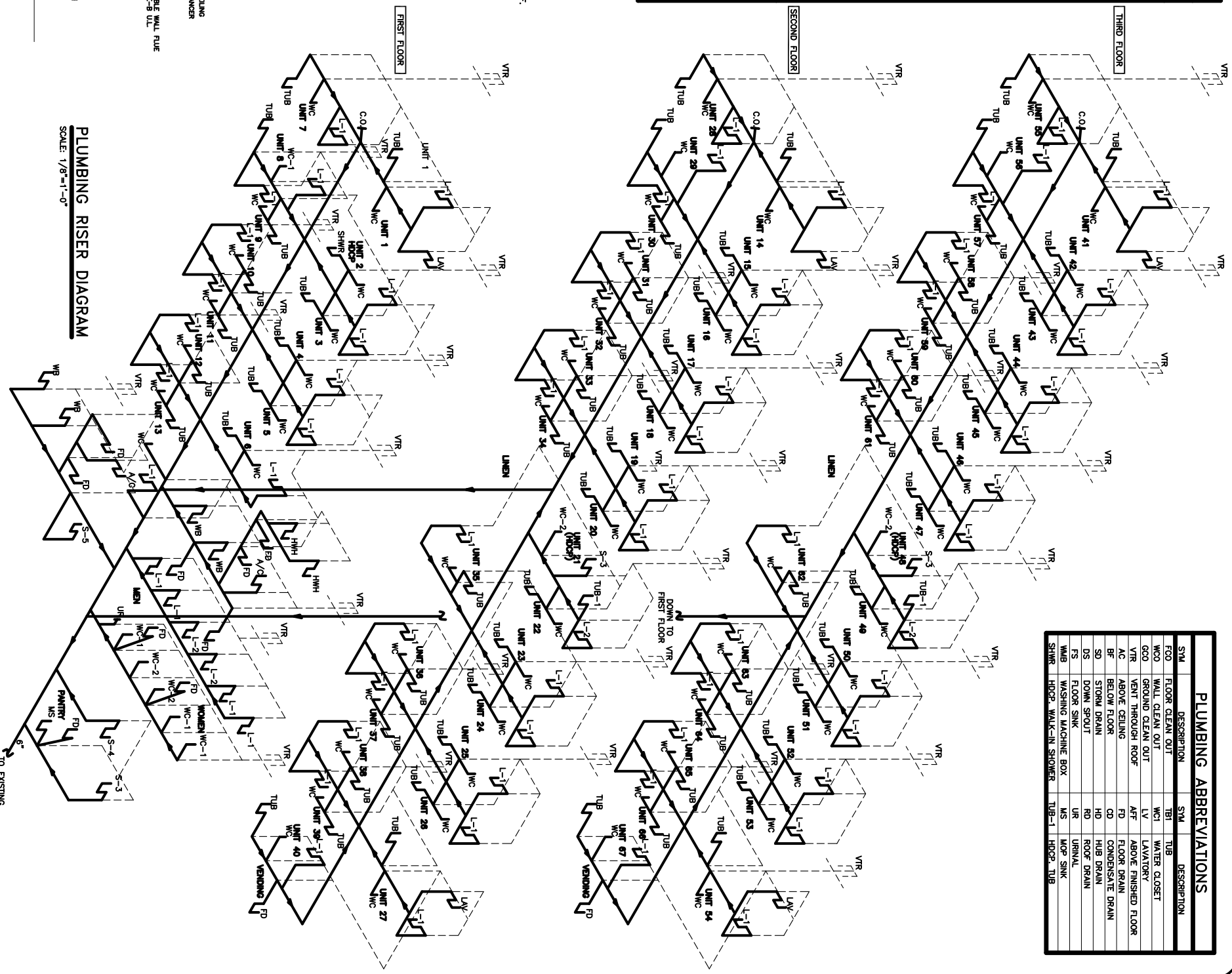
NOTE: EACH WATER HEATER SHALL HAVE A CONTROL/TIMER FURNISHED WITH UNIT. (SCHEMATIC FURNISHED BY MANUFACTURERS INSTRUCTIONS)



PLUMBING ABBREVIATIONS

SYM	DESCRIPTION	SYM	DESCRIPTION
FOO	FLOOR CLEAN OUT	TUB	TUB
WCO	WALL CLEAN OUT	WC	WATER CLOSET
GOO	GROUND CLEAN OUT	LV	LAVATORY
VR	VENT THROUGH ROOF	AF	ABOVE FINISHED FLOOR
AC	ABOVE CEILING	FD	FLOOR DRAIN
BF	BELOW FLOOR	CD	CONDENSATE DRAIN
SD	STORY DRAIN	HD	HUB DRAIN
NS	DOWN SPOUT	RD	ROOF DRAIN
FS	FLOOR SINK	UR	URINAL
MS	MOP SINK	MS	MOP SINK
SHWR	SHOWER	TUB-1	TUB & SHOWER

PLUMBING RISER DIAGRAM
DR. EDUARDO HERNANDEZ
CEDAR LAKE ROAD
BILOXI, MISSISSIPPI



PLUMBING RISER DIAGRAM
SCALE: 1/8"=1'-0"

LA QUINTA INN & SUITES
DAMMON ENGINEERING, INC.
1095 FLORIDA AVENUE 985-649-5832 SLIDELL, LA. 70458
DAMMONENGINEERING.COM

SCALEAS NOTED
FILE:
JOB NO. 1694
DATE: 11-01-05

SHEET
P-3
OF