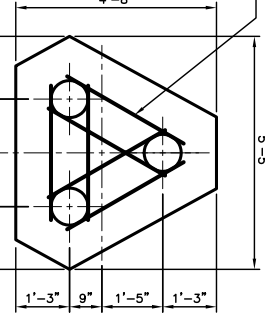


PILING GENERAL NOTES:

- PILING DESIGN IS FOR CLASS 5 PILES WITH CAPACITY OF 8 TONS EACH. CONTRACTOR SHALL BASE PILING ON USING 30 FOOT LONG PILES. PERFORM A PILE LOAD TEST TO DETERMINE THE EXACT REQUIREMENT FOR (8) TON CAPACITY. CONTRACT ADJUSTMENT WILL BE MADE TO COVER COST OF CHANGES IN LENGTH OF PILE.



PILE FOOTING DETAIL
SCALE: 1/2" = 1'-0"

SHEET PILE DESIGN PARAMETERS:

- REQUIRED SECTION MODULUS = 6.07 IN³/FT³ OR WIDTH OF SHEET PILE FOR SHEET PILE WALL USE SKYLINE STEEL, CORR., SECTION "CS 69" (OR APPROVED EQUAL).
- REQUIRED - 2" X 11.5 OR 2" X 13.75 CHANNELS, AS NOTED FOR SPANS NO GREATER THAN 10'-0" 1/2" THK X 5/8" X 5/8" STAINLESS STEEL PLATE WASHERS 1/4" X 10 STAINLESS STEEL HEX NUTS

BOTTOM OF SHEET PILE SHALL BE @ ELEV. 24.00 FT. SEE SHEET S-7 FOR SIDE SHEET PILE BOTTOM ELEVATIONS.

PILING & BULKHEAD PLAN
SCALE: 1/8" = 1'-0"

"WHALER" LENGTH CHART

NO. OF PILES	NORTH BULKHEAD	SOUTH BULKHEAD	WEST BULKHEAD	EAST BULKHEAD
1	7'-0"	3'-8"	16'-8"	11'-3"
2	6'-8"	3'-6"	17'-8"	11'-3"
3	6'-4"	3'-0"	18'-8"	11'-3"
4	6'-0"	3'-0"	19'-8"	11'-3"
5	5'-8"	3'-0"	20'-8"	11'-3"
6	5'-4"	3'-0"	21'-8"	11'-3"
7	5'-0"	3'-0"	22'-8"	11'-3"
8	4'-8"	3'-0"	23'-8"	11'-3"
9	4'-4"	3'-0"	24'-8"	11'-3"
10	4'-0"	3'-0"	25'-8"	11'-3"
11	3'-8"	3'-0"	26'-8"	11'-3"
12	3'-4"	3'-0"	27'-8"	11'-3"
13	3'-0"	3'-0"	28'-8"	11'-3"
14	2'-8"	3'-0"	29'-8"	11'-3"
15	2'-4"	3'-0"	30'-8"	11'-3"
16	2'-0"	3'-0"	31'-8"	11'-3"
17	1'-8"	3'-0"	32'-8"	11'-3"
18	1'-4"	3'-0"	33'-8"	11'-3"
19	1'-0"	3'-0"	34'-8"	11'-3"
20	0'-8"	3'-0"	35'-8"	11'-3"
21	0'-4"	3'-0"	36'-8"	11'-3"
22	0'-0"	3'-0"	37'-8"	11'-3"
23	0'-0"	3'-0"	38'-8"	11'-3"
24	0'-0"	3'-0"	39'-8"	11'-3"
25	0'-0"	3'-0"	40'-8"	11'-3"
26	0'-0"	3'-0"	41'-8"	11'-3"
27	0'-0"	3'-0"	42'-8"	11'-3"
28	0'-0"	3'-0"	43'-8"	11'-3"
29	0'-0"	3'-0"	44'-8"	11'-3"
30	0'-0"	3'-0"	45'-8"	11'-3"
31	0'-0"	3'-0"	46'-8"	11'-3"

NOTE: UNLESS OTHERWISE SPECIFIED, ALL DIMENSIONS SHALL BE IN FEET AND INCHES. UNLESS OTHERWISE SPECIFIED, ALL DIMENSIONS SHALL BE IN FEET AND INCHES.

LA QUINTA INN & SUITES

DAMMON ENGINEERING, INC.
ARCHITECTS - ENGINEERS
1095 FLORIDA AVENUE 985-649-5892 SLIDELL, LA. 70458
DAMMONENGINEERING.COM

PILING & BULKHEAD PLAN

DR. EDUARDO HERNANDEZ
CEDAR LAKE ROAD
BILOXI, MISSISSIPPI

SCALE: AS NOTED

FILE: _____

JOB NO. 1694

DATE: 11-01-05

SHEET S-3 OF _____