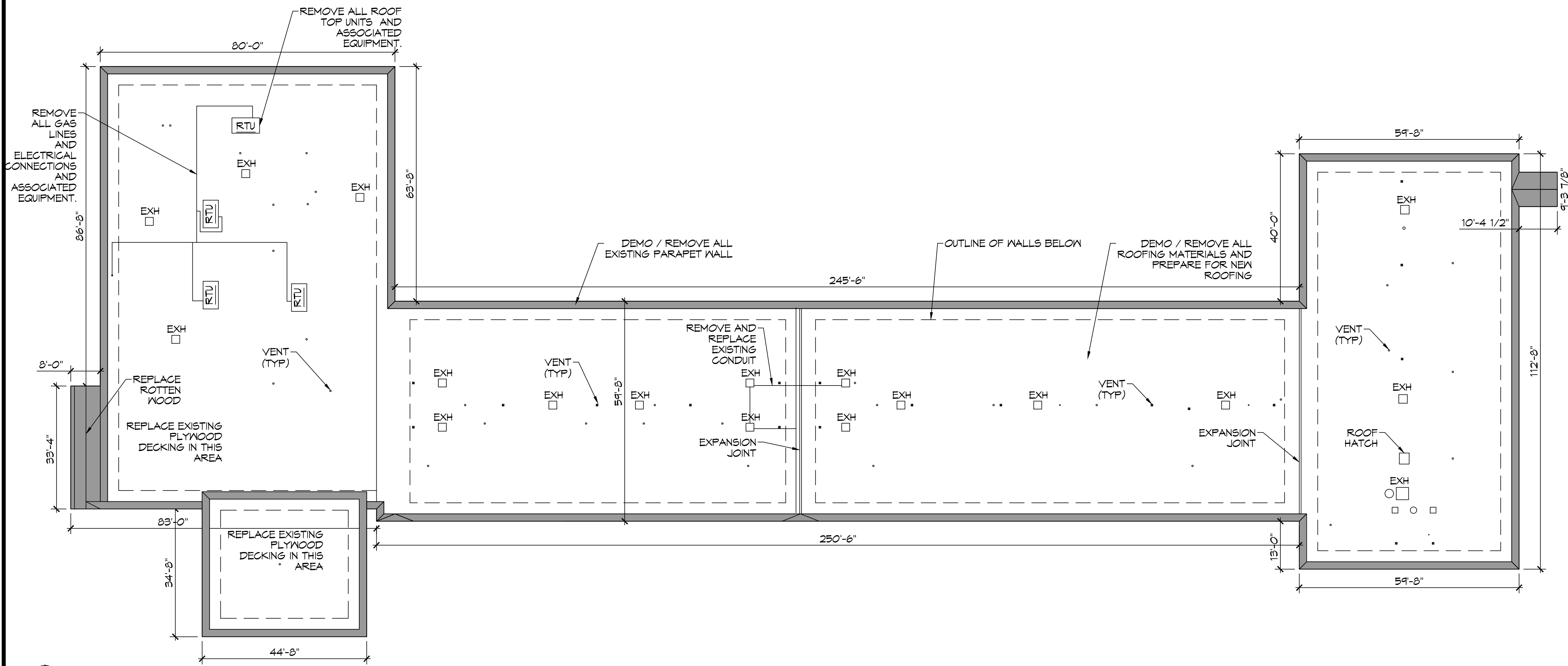




1 EXISTING ROOF-PICTURES FOR REFERENCE
SCALE: N.T.S.



2 OVERALL DEMO ROOF PLAN
SCALE: 1/16" = 1'-0"

GENERAL DEMO NOTES

1. THIS DEMOLITION PLAN HAS BEEN DERIVED FROM EXISTING BUILDING PLANS AND ARE INTENDED TO REASONABLY REPRESENT EXISTING CONDITIONS. ENGINEER DOES NOT GUARANTEE ACCURACY OF THE EXISTING CONDITIONS. CONTRACTOR TO FIELD VERIFY EXISTING CONDITIONS IN AREAS TO BE RENOVATED PRIOR TO BID IN ORDER TO PROVIDE AN ACCURATE BID AND BE AWARE OF ALL CONSTRUCTION METHODS NEEDED TO PROVIDE THE FINISHED PRODUCT AS SHOWN ON THE PLANS. ILLUSTRATIONS, DIMENSIONS, AND INFORMATION IN THESE DRAWINGS ARE BASED, IN PART, ON EXISTING DRAWINGS FURNISHED BY THE OWNER. ACTUAL CONDITIONS MAY DEVIATE FROM THAT SHOWN ON THE DRAWINGS. THE CONTRACTOR SHALL VERIFY ACTUAL CONDITIONS AND COORDINATE THE DEMOLITION WITH NEW WORK SO THAT DEMOLITION IS COMPLETE.
2. THE CONTRACTOR SHALL COORDINATE REMOVAL OF SMOKE AND OTHER FIRE ALARM ADDRESSABLE UNITS ATTACHED TO THE AHU WITH THE FIRE ALARM CONTRACTOR PRIOR TO REMOVAL.
3. THE CONTRACTOR SHALL TAKE ALL NECESSARY PRECAUTIONS TO ENSURE THE SAFETY OF THE PUBLIC AND/OR WORKMEN ON THE SITE TO PREVENT ACCIDENTS OR INJURY TO ANY PERSON ON OR ADJACENT TO THE PREMISES. THE CONTRACTOR SHALL COMPLY WITH ALL LAWS, ORDINANCES, AND REGULATIONS PERTAINING TO SAFETY AND THE PREVENTION OF ACCIDENTS.
4. ALL EXISTING STEEL FRAMING MEMBERS (COLUMNS, BEAMS, JOISTS, DECK, ETC...) SHALL REMAIN INTACT AND UNDAMAGED.
5. WHEN DEMOLITION TAKES PLACE, SHOULD ANY WORK AFFECT THE INTEGRITY OF THE STRUCTURE, WORK MUST STOP IMMEDIATELY, AND DAMMON ENGINEERING NOTIFIED. UNDER NO CIRCUMSTANCES SHALL REINFORCING OF ANY KIND BE DAMAGED, CUT, OR BROKEN.
6. EXISTING ITEMS, EQUIPMENT, PLUMBING FIXTURES, ETC. TO REMAIN IN PLACE SHALL BE PROTECTED FROM DIRT AND DAMAGE DURING DEMOLITION AND CONSTRUCTION.
7. ALL OPENINGS AND VOIDS LEFT BY THE REMOVAL OF EXISTING CONSTRUCTION, EQUIPMENT, PIPING, DUCTS, ETC. SHALL BE PROPERLY PATCHED AND CLOSED OFF TO MAINTAIN PROPER FIRE RATING IN WALL. PREPARE PATCHES TO RECEIVE NEW FINISHES AS REQUIRED.

DEMO LEGEND

— REMOVE 1,300 L.F. OF EXISTING PARAPET WALL

DEMO NOTES

1. REMOVE METAL PARAPET WALL ALL THE WAY AROUND THE BLDG.
2. REMOVE SUPPORTS FOR PARAPET. REUSE 2X2 ANGLE BRACKETS (IF PROPER LENGTH) & MODIFY AS SHOWN ON NEW ROOF INSTALLATION.
3. REMOVE RTU'S AND ASSOCIATED EQUIPMENT. IN FILL OPENINGS WITH SAME MATERIALS.
4. REMOVE ALL ROOFING DOWN TO THE CONCRETE DECK ON THE LIVING AREAS AND DOWN TO THE PLYWOOD ON THE DROP OFF AREA AND CHECK IN AREA.
5. REMOVE AND REPLACE APPROXIMATELY 3,057 SQ. FT. OF ROTTEN 3/4" PLYWOOD DECKING OVER THE DROP OFF AREA AND CHECK IN AREA.
6. CLEAN ROOF OFF AND PREPARE FOR NEW PARAPET WALL AND ROOFING MATERIALS.
7. REMOVE AND REPLACE CONDUITS ON ROOF FOR EXHAUST FANS AND SITE LIGHTING.

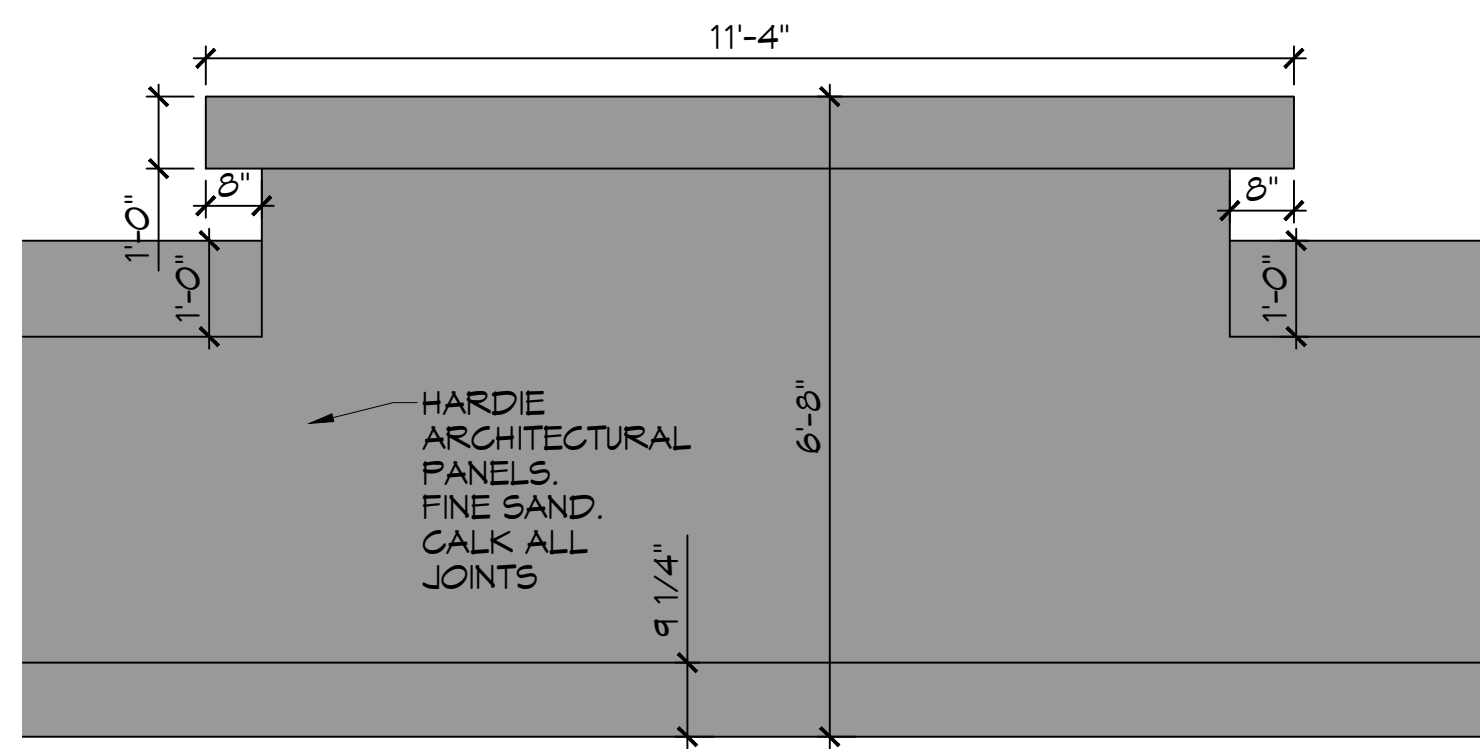
DAMMON ENGINEERING, INC.
LOUISIANA & MISSISSIPPI
Chief Engineer: Brian Mischick, PE
554 Old Spanish Trail
Slidell, LA 70458
www.dammonengineering.com
info@dammonengineering.com
PH: 985.649.8832

REVISIONS	DATE
#	DESCRIPTION

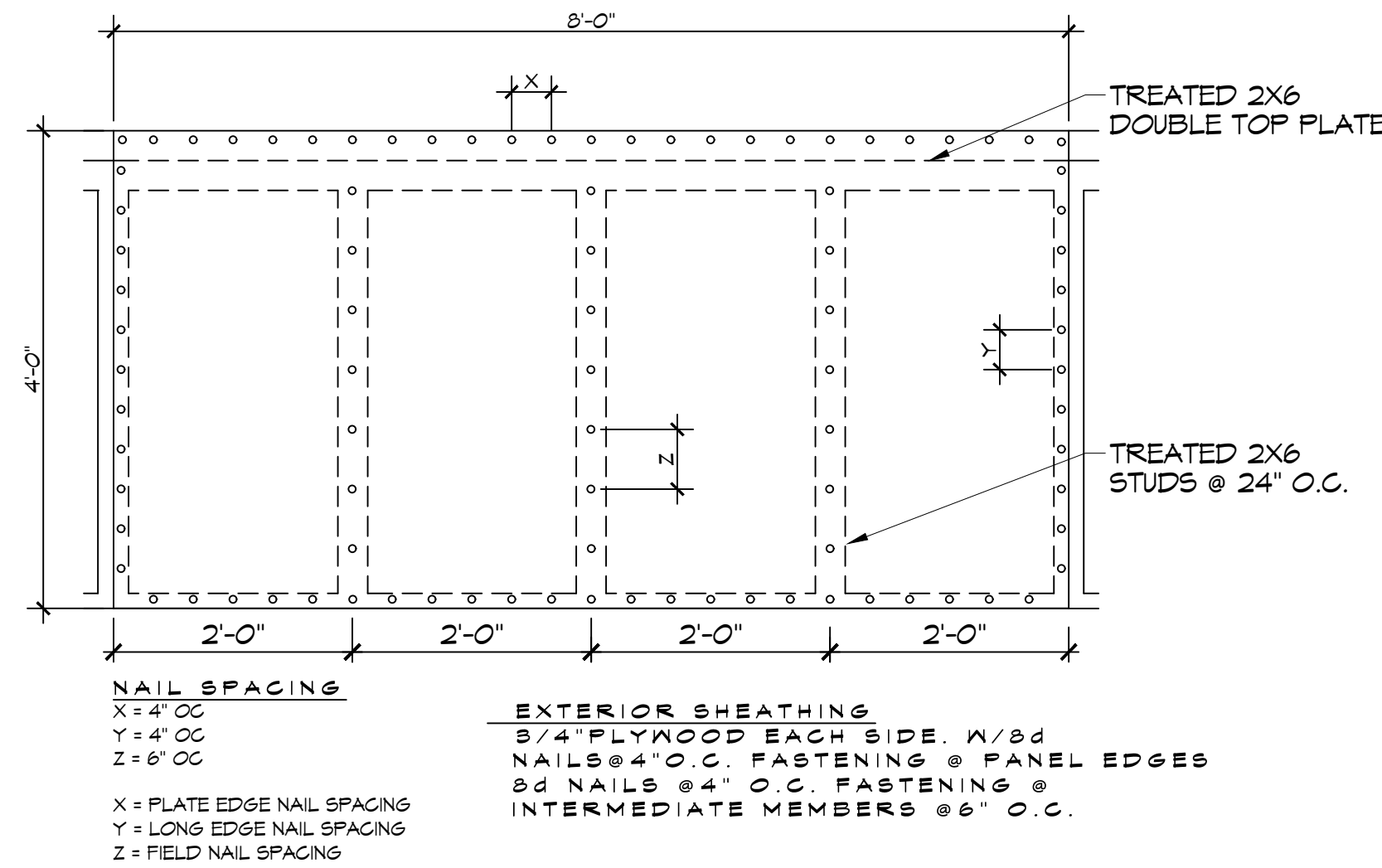
SEAL:
STATE OF LOUISIANA
BRIAN A. MISCHICK
License No. 30187
PROFESSIONAL ENGINEER

NEW PARTIAL RENOVATION
RED ROOF INN
SHEET TITLE:
DEMOLITION
ROOF PLAN
DRAWING NUMBER:
D101
SHEET No: 2 of 10

1662 GAUGE BLVD.
SLIDELL, LA 70458
JOB No: 2451 | DATE: 11-07-2023
DRAWN BY: CKD | CHECKED BY: JMS



9 PLAN VIEW WALL ACCENT
SCALE: 1/2" = 1'-0"



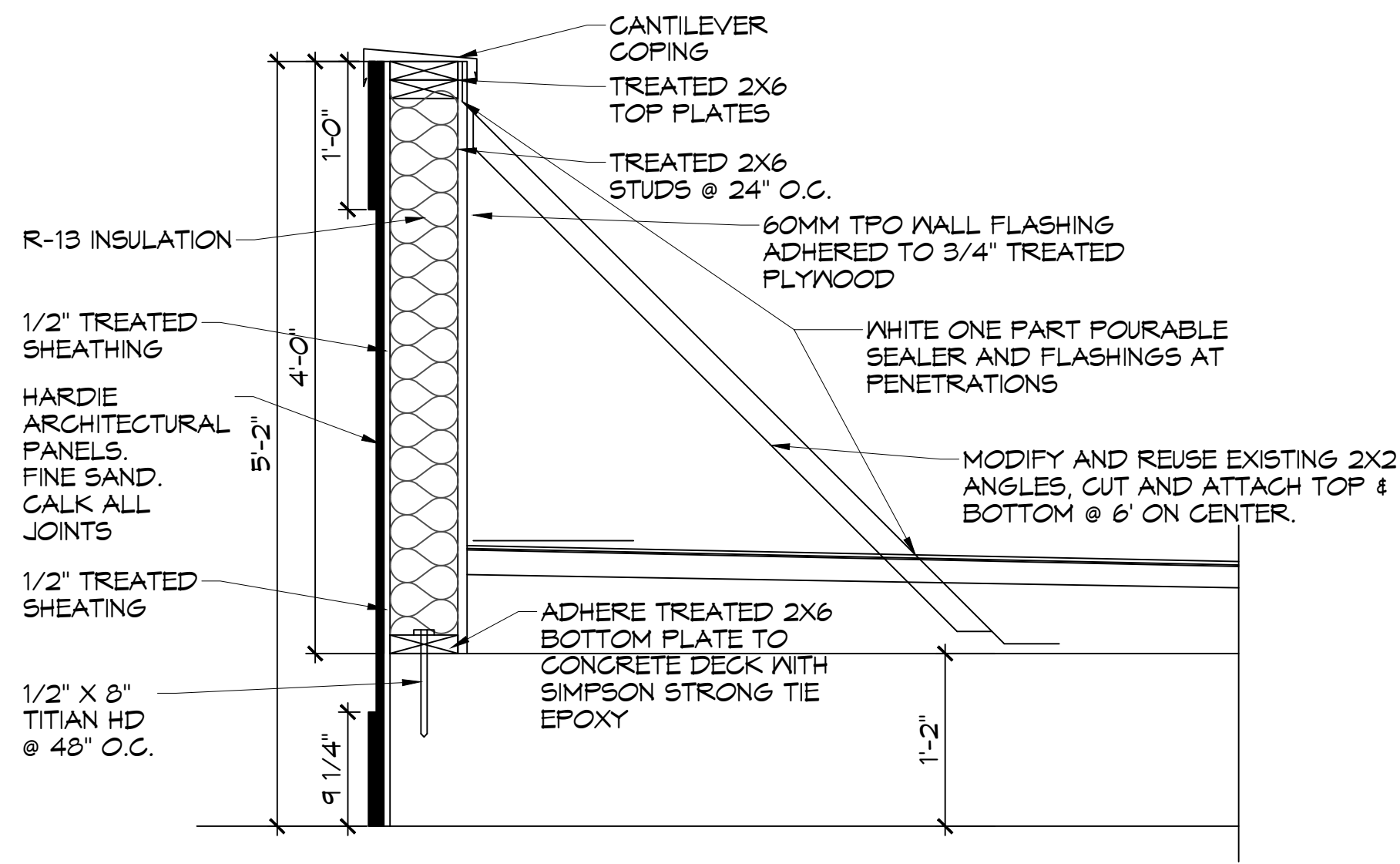
10 PARAPET SHEATHING NAILING PATTERN
SCALE: 3/4" = 1'-0"

INSTALLATION ON METAL DECK OVER DROP OFF AND LOBBY

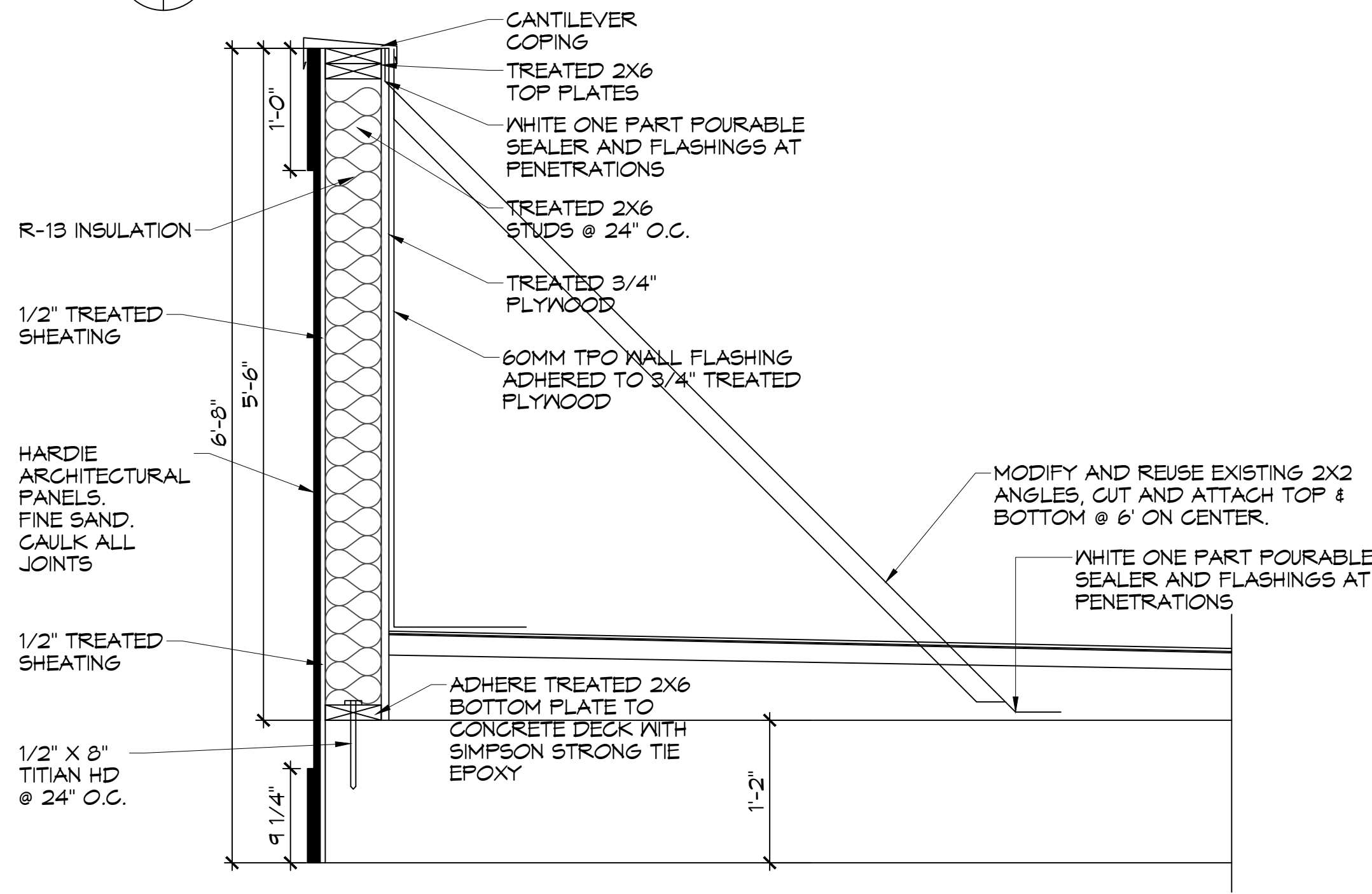
1. LOOSE LAY A 2"X48"X96" ISO95+GL INSULATION BOARD ON THE METAL DECK.
2. MECHANICALLY ATTACH A 2" X48"X96" ISO95+GL INSULATION BOARD THROUGH THE FIRST LAYER OF ISO TO THE METAL DECK. PER THE 48"X96" BOARD; THE ATTACHMENT RATE TO BE 20 HEAVY DUTY FASTENERS AND PLATES IN THE FIELD; 32 IN THE PERIMETERS AND CORNERS.
3. ADHERE A 1/8" X48"X48" TAPERED ISO95+GL INSULATION BOARD TO THE SECOND LAYER OF ISO WITH ISO SPRAY R LOW-RISE FOAM ADHESIVE. ADHESIVE RATE TO BE 4" O.C. EVERYWHERE.
4. ADHERE A 1/2" X48"X48" SECUROCK GYPSUM FIBER COVERBOARD BOARD TO THE SECOND LAYER OF ISO WITH ISO SPRAY R LOW-RISE FOAM ADHESIVE. ADHESIVE RATE TO BE 4" O.C. EVERYWHERE.
5. ADHERE A 60 MIL ULTRAPLY TPO MEMBRANE TO THE COVERBOARD WITH LVOC ULTRAPLY BONDING ADHESIVE.
6. PROVIDE RETROFIT KITS IN THE EXISTING DRAIN BOWLS.
7. TERMINATE ROOF MEMBRANE AT WALL AND SECURE TO WALL AT 12" O.C.
8. ADHERE A 60 MIL ULTRAPLY TPO MEMBRANE TO THE 3/4" PLYWOOD AT PARAPETS WITH ULTRAPLY BONDING ADHESIVE. ENSURE MEMBRANE GOES UP AND OVER PARAPET AND DOWN OUTSIDE FACE OF WALL.
9. INSTALL ELEVATES CANTILEVER COPING ON TOP OF PARAPET TO COMPLETE THE INSTALLATION.

INSTALLATION ON CONCRETE DECK

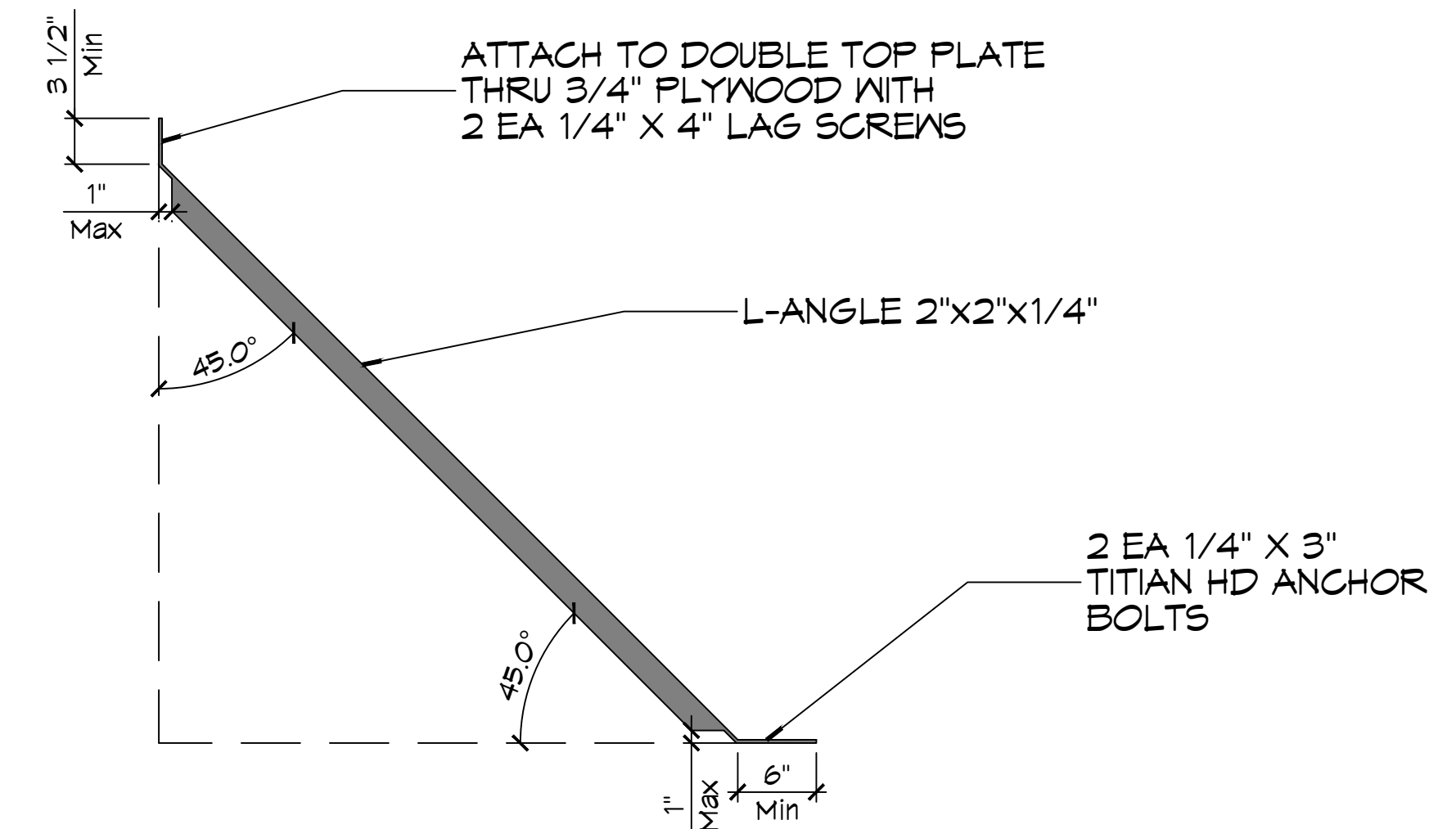
1. SCRAPE AND CLEAN OFF STRUCTURAL CONCRETE DECK.
2. ADHERE A 2"X48"X48" ISO95+GL INSULATION BOARD TO THE STRUCTURAL CONCRETE DECK WITH ISO SPRAY R LOW-RISE FOAM ADHESIVE. ADHESIVE RATE TO BE 4" O.C. EVERYWHERE.
3. ADHERE A 2" X48"X48" ISO95+GL INSULATION BOARD TO THE FIRST LAYER OF ISO WITH ISO SPRAY R LOW-RISE FOAM ADHESIVE. ADHESIVE RATE TO BE 4" O.C. EVERYWHERE.
4. ADHERE A 1/8" X48"X48" TAPERED ISO95+GL INSULATION BOARD TO THE SECOND LAYER OF ISO WITH ISO SPRAY R LOW-RISE FOAM ADHESIVE. ADHESIVE RATE TO BE 4" O.C. EVERYWHERE.
5. ADHERE A 1/2" X48"X48" SECUROCK GYPSUM FIBER COVERBOARD BOARD TO THE SECOND LAYER OF ISO WITH ISO SPRAY R LOW-RISE FOAM ADHESIVE. ADHESIVE RATE TO BE 4" O.C. EVERYWHERE.
6. ADHERE A 60 MIL ULTRAPLY TPO MEMBRANE TO THE COVERBOARD WITH LVOC ULTRAPLY BONDING ADHESIVE.
7. PROVIDE RETROFIT KITS IN THE EXISTING DRAIN BOWLS.
8. TERMINATE ROOF MEMBRANE AT WALL AND SECURE TO WALL AT 12" O.C.
9. ADHERE A 60 MIL ULTRAPLY TPO MEMBRANE TO THE 3/4" PLYWOOD AT PARAPETS WITH ULTRAPLY BONDING ADHESIVE. ENSURE MEMBRANE GOES UP AND OVER PARAPET AND DOWN OUTSIDE FACE OF WALL.
10. INSTALL ELEVATES CANTILEVER COPING ON TOP OF PARAPET TO COMPLETE THE INSTALLATION.



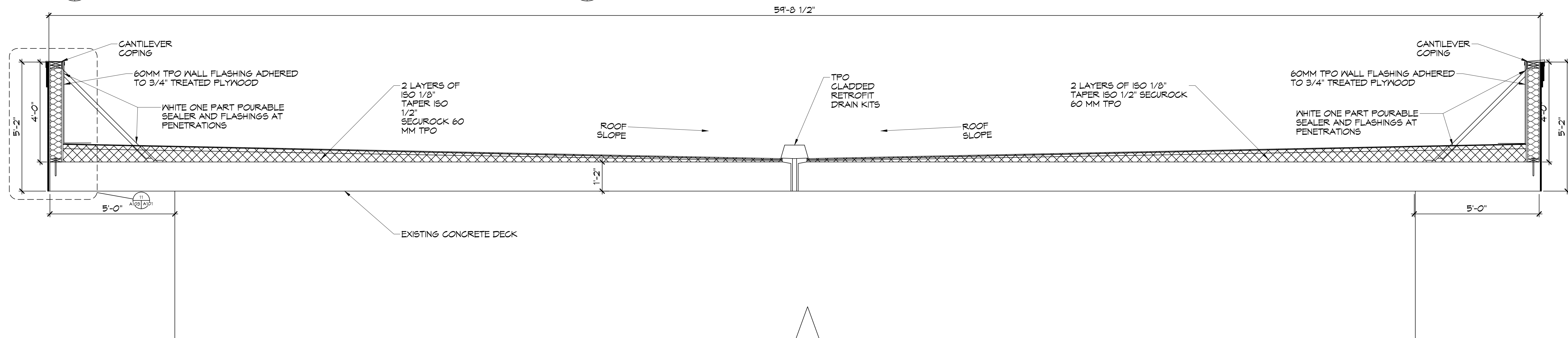
11 PARAPET WALL SECTION
SCALE: 1" = 1'-0"



12 PARAPET WALL ACCENT
SCALE: 1" = 1'-0"



13 PARAPET SUPPORT
SCALE: 1" = 1'-0"



14 ROOF SECTION
SCALE: 1/2" = 1'-0"

DAMMON ENGINEERING, INC.
LOUISIANA & MISSISSIPPI
Chief Engineer: Brian Mistich, PE
554 Old Spanish Trail
Slidell, LA 70488
www.dammonengineering.com
info@dammonengineering.com
PH: 985.649.9532

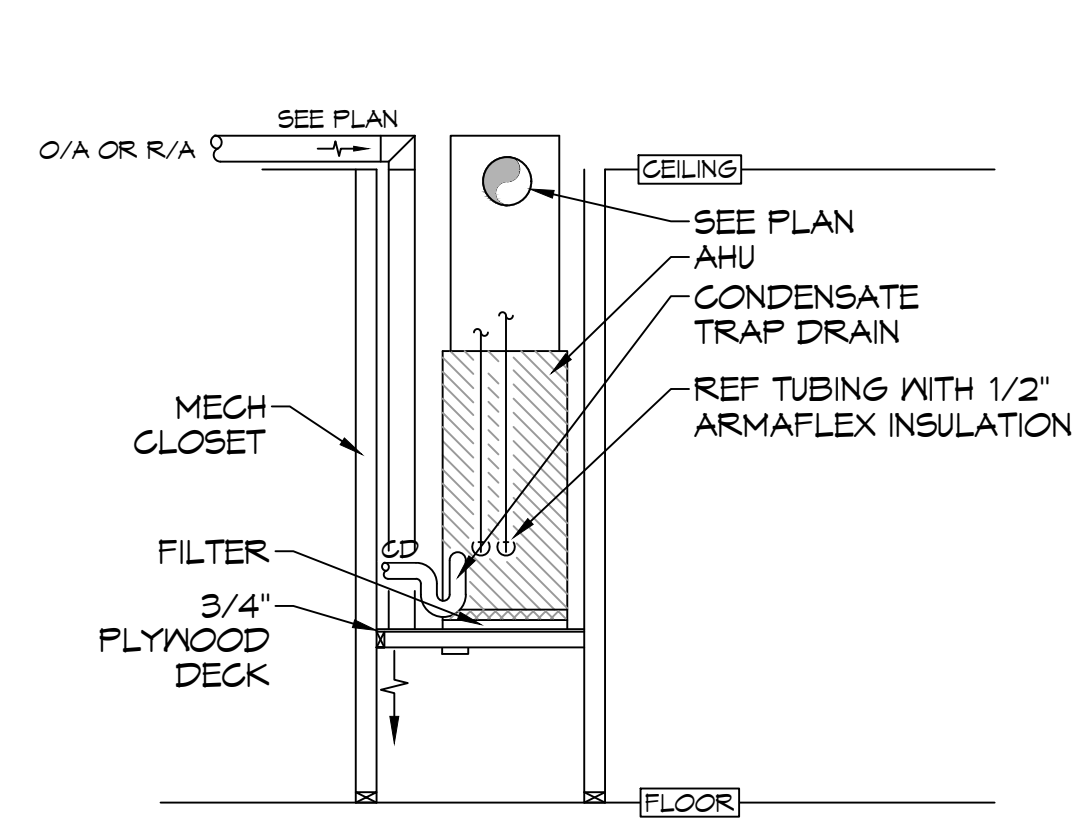
#	DESCRIPTION	DATE
1	Revised Millwork and Counter Tops	8/1/2022



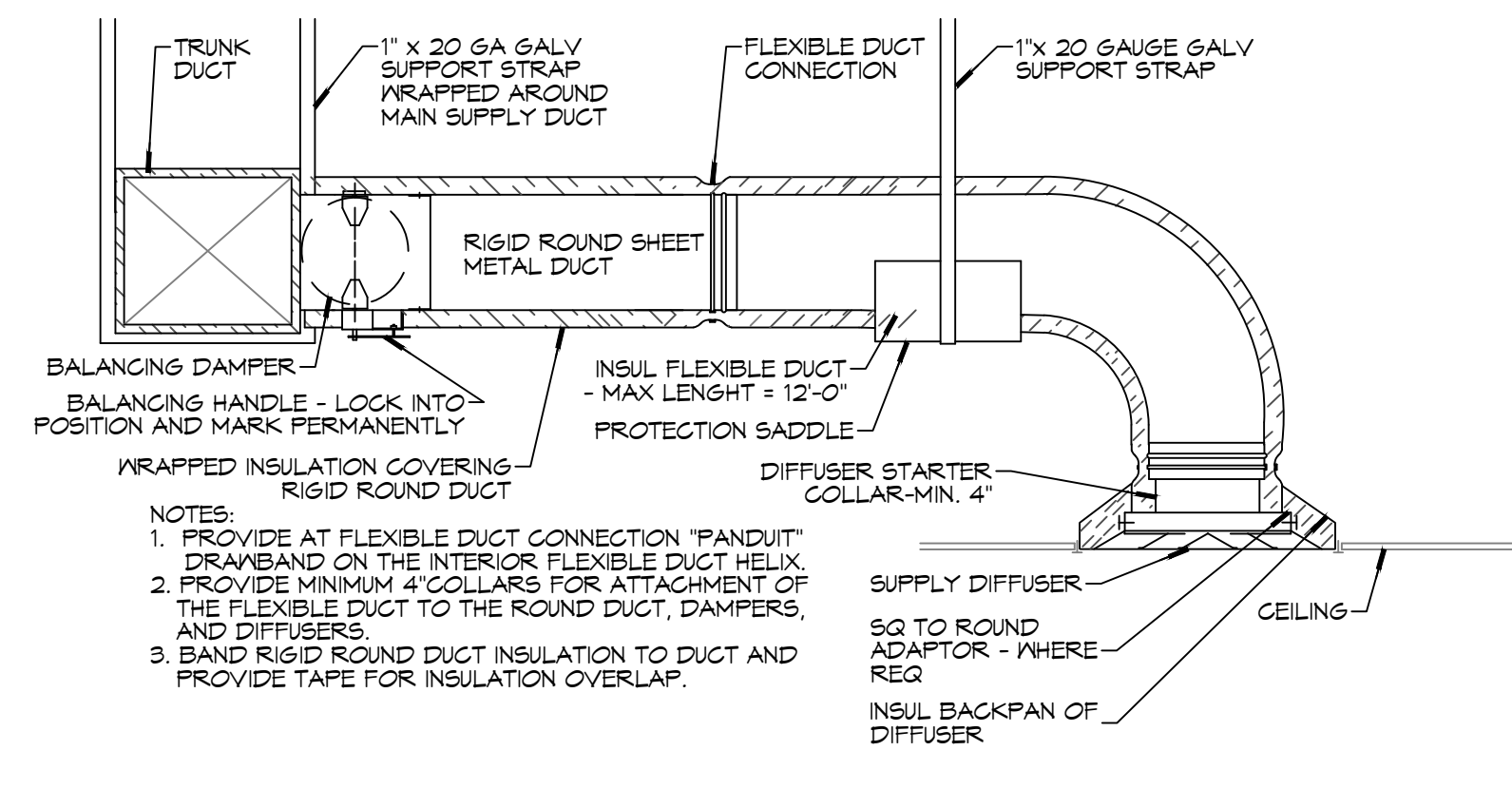
NEW PARTIAL RENOVATION
RED ROOF INN
1662 GAUGE BLVD.
SLIDELL, LA 70459
JOB No: 2481 | DATE: 11-07-2025
DRAWN BY: BAW
C&D CHECKED BY:

SHEET TITLE:
ROOF SECTION AND PARAPET WALL SECTION
DRAWING NUMBER:
A103
SHEET No: 5 of 10

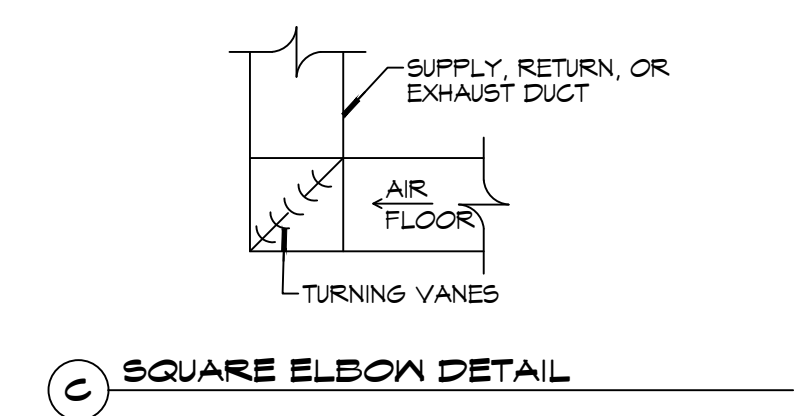
EIT No. 10-10-2023-001 - Rev. 01 - 11/15/2023 - Mechanical Plan - 33 MECHANICAL PLAN - 11/15/2023 - 11:07-2023 - CKD



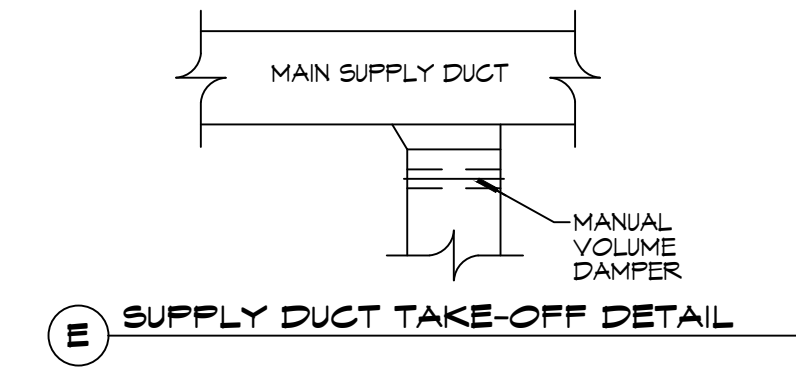
A TYPICAL VERTICAL AHU DETAIL
SCALE: N.T.S.



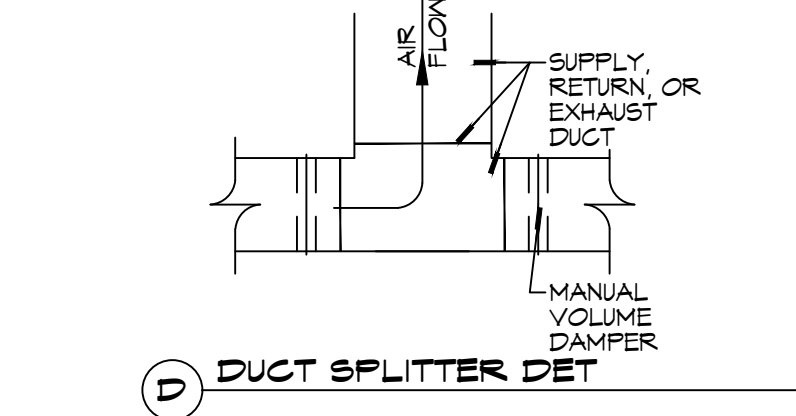
B DIFFUSER CONNECTION DETAIL - FLEX DUCT



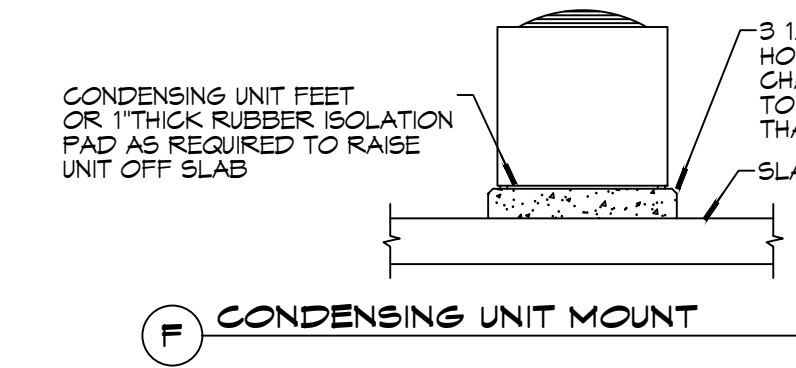
C SQUARE ELBOW DETAIL



E SUPPLY DUCT TAKE-OFF DETAIL



D DUCT SPLITTER DET



F CONDENSING UNIT MOUNT

GENERAL HVAC NOTES

- CONCEALED DUCTWORK TO BE GALVANIZED SHEET METAL WRAPPED WITH FIBROUS GLASS DUCT WRAP WITH FIBER VAPOR BARRIER, MIN R-6. INSTALLED PER SMACNA STANDARDS. DUCT WORK IMMEDIATELY DOWNSTREAM FROM RTU SHALL BE LINED FOR SOUND ATTENUATION.
- EXPOSED DUCTWORK TO BE GALVANIZED SHEET METAL LINED WITH FIBROUS GLASS DUCT LINER, MIN R-6. INSTALLED PER SMACNA STANDARDS.
- ROUND FLEXIBLE DUCT TO BE UL-181, CLASS 1, AIR DUCT MATERIALS.
- DUCT SIZES SHOWN ARE CLEAR INSIDE DIMENSIONS.
- IN ALL SYSTEMS OVER 2000 CFM AND LESS THAN 15,000 CFM, SMOKE DETECTORS SHALL BE INSTALLED IN ACCORDANCE WITH NFPA 12E IN THE RETURN DUCT DOWNSTREAM OF THE AIR HANDLING UNIT AND ALL FILTERS TO AUTOMATICALLY STOP THE FAN.
- PROVIDE UL LISTED 125 F° FIRESTAT IN RETURN AIR OF EACH SYSTEM UNDER 2000 CFM TO SHUT DOWN THE FAN IN THE EVENT OF FIRE.
- PROVIDE UL RATED FIRE DAMPERS WHERE REQUIRED AT ALL DUCT PENETRATIONS OF FIRE-RATED ASSEMBLIES AND WHERE REQUIRED BY CODE, INCLUDING OUTSIDE AIR INTAKES AND EXHAUST FANS.
- CONDENSATE DRAINS TO BE PVC PIPE RUN TO PLUMBERS P-TRAP WITHIN FIVE FEET OF AIR HANDLING UNITS.
- ALL AIR HANDLING SYSTEMS TO BE BALANCED TO ASSURE PROPER AIR FLOWS PER PLANS.
- ALL THERMOSTATS TO BE AUTOMATIC CHANGEOVER WITH HEAT SWITCH.
- EXHAUST FAN SHALL BE CONTROLLED BY A SWITCH ON THE WALL IN THE SAME LOCATION AS LIGHT SWITCH(S). PROVIDE BACK DRAFT DAMPER.
- PROVIDE AND INSTALL WATER PROOF GRILLE VENT IN PROPER ROOF LOCATION FOR PLUMBING FIXTURE EXHAUST.
- ALL SUPPLY AIR VENTS SHALL BE EQUIPPED WITH AIR CONTROL DAMPERS AT THE REGISTER.
- LOCATE OUTDOOR UNITS AS SHOWN ON ARCHITECTURAL DRAWINGS.
- REFRIGERANT LINES SHALL BE SIZED BY UNIT MANUFACTURER AND INSTALLED ACCORDING TO MANUFACTURER'S INSTRUCTIONS.
- FRESH AIR SHALL BE SUPPLIED TO EACH AIR HANDLER THROUGH EXTERIOR WALL DUCT SUPPLIED WITH A CONTROL DAMPER.
- ALL ELECTRICAL, MECHANICAL, AND PLUMBING PENETRATING FIRE WALLS SHALL BE FIRE CAULKED. (PENETRATIONS THROUGH RATED CONSTRUCTION SHALL BE SEALED WITH A MATERIAL CAPABLE OF PREVENTING THE PASSAGE OF FLAMES AND HOT GASES WHEN TESTED IN ACCORDANCE WITH ASTM-E8-14).
- ALL MECHANICAL SYMBOLS ARE DRAWN DIAGRAMMATICALLY. CONTRACTOR TO VERIFY WITH OWNER LOCATIONS OF VENTS, DAMPERS, REGISTERS, ETC.
- FLEXIBLE DUCTWORK LENGTH NOT TO EXCEED 12'-0".
- REFER TO REFLECTED CEILING PLAN FOR FINAL GRILLE AND DIFFUSER LOCATIONS AND COORDINATE AS REQUIRED.
- FINAL LOCATION OF TEMPERATURE CONTROLS TO BE COORDINATED WITH OWNER AT JOB SITE.
- PROVIDE AND INSTALL SMOKE DETECTORS AS APPROVED BY LOCAL AHJ'S. PLACE NEAR R/A AND S/A OPENINGS OF AHU AND PROVIDE, WITH ACCESS PANEL, WIRING BY ELECTRICAL CONTRACTOR.
- FRESH AIR INTAKES ARE REQUIRED TO HAVE MOTORIZED OR GRAVITY DAMPERS TO SHUT OFF WHEN SYSTEM IS NOT RUNNING.
- PROVIDE BIRD SCREENS AT ALL EXTERIOR MECHANICAL PENETRATIONS.
- COORDINATE WALL MOUNTED THERMOSTAT LOCATIONS WITH ALL OWNER FURNISHED ITEMS EITHER WALL MOUNTED OR FLOOR MOUNTED AGAINST PARTITIONS. REFER TO ARCHITECTURAL DRAWINGS.
- SEE ROOF PLAN FOR ALL ROOF PENETRATIONS.
- PROVIDE MIN 18 GA GALVANIZED SHEET METAL TO BLANK-OFF GABLE VENTS WHERE INTAKE/EXHAUST DUCTS OCCUR.

A/C SCHEDULE																				
TAG	MAKE	MODEL	AIR HANDLER				HEAT PUMP				REMARKS									
			NOMINAL TONS	TOTAL CFM	OA CFM	COOLING	MOTOR HP	ESP (" WC)	AUX. HEAT	POWER		TAG	MAKE	MODEL	VAC	PH	MCA			
AHU-1	Goodman	ASPT25B14	2	720	40	16.3	14.2	3/4	0.3	3	240	1	19	HP-1	Goodman	GSZ140241	240	1	10.6	1, 2, 3, 4
AHU-2	Goodman	ASPT61D14	5	1690	230	50.5	37.3	1	0.5	6	240	1	40	HP-2	Goodman	GSZ140601	240	1	34.3	1, 2, 3, 4

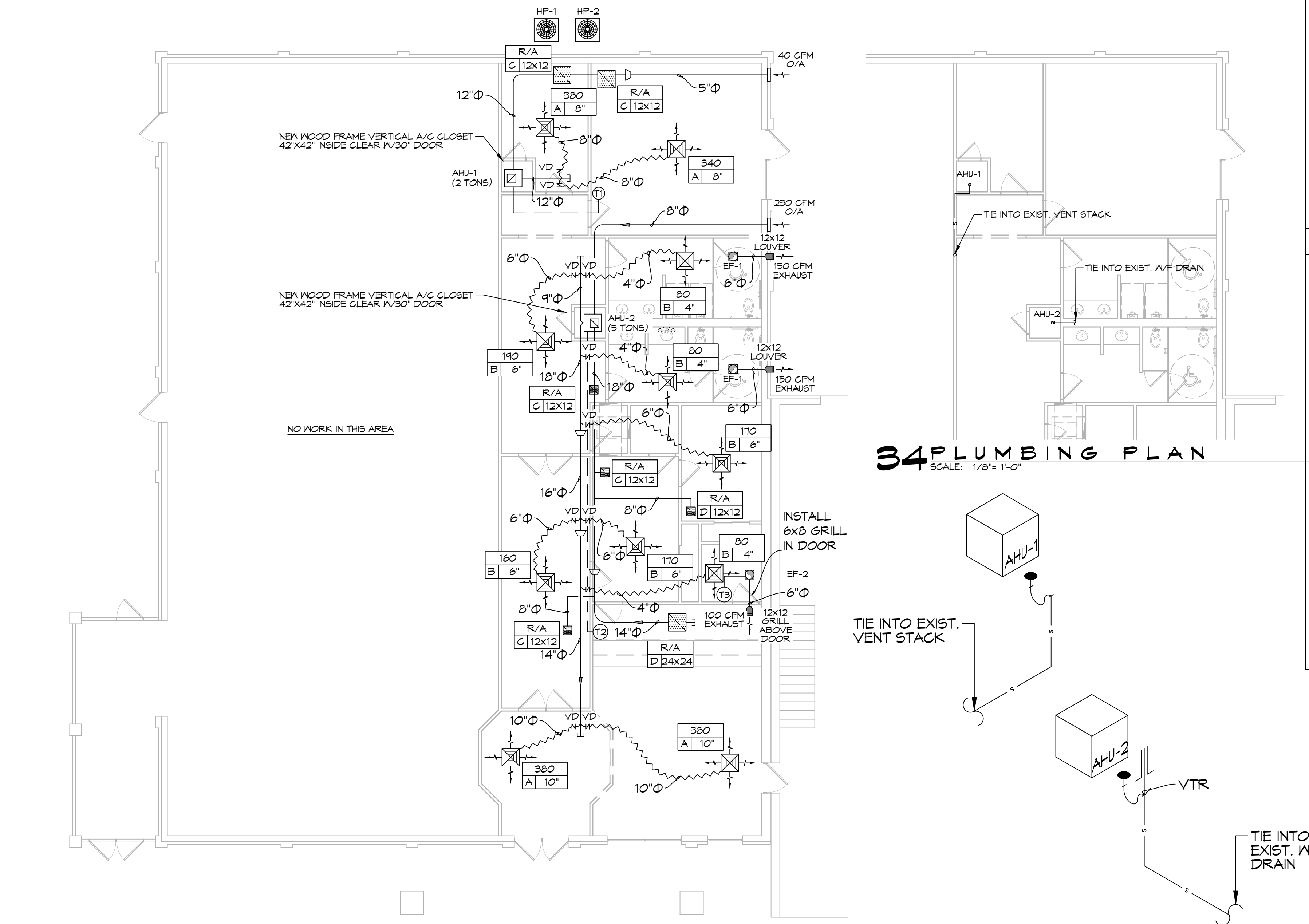
- NOTES:
- Provide inlet filter box, single point power connection, time delay relay, condensate overflow switch & programmable 7/24 thermostat with lockable cover.
 - Cooling capacities to be rated in accordance with AHRI standard 210/290 for ASHRAE standard design weather conditions in New Orleans, LA.
 - Install units in accordance with manufacturer's recommendations.
 - Provide new filters after commissioning and final acceptance.

DIFFUSER SCHEDULE				
TAG	SERVICE	NECK SIZE	DESCRIPTION	REMARKS
A	Supply Air	Ref. Plan	24" X 24" Perforated Ceiling Diffuser, Price ASCDA w/ adjustable pattern	1, 2, 3
B	Supply Air	Ref. Plan	12" X 12" Perforated Ceiling Diffuser, Price ASCDA w/ adjustable pattern	1, 2, 3
C	Return Air	Ref. Plan	12" X 12" Perforated Return, Titus PAR	1, 2, 3
D	Return Air	Ref. Plan	24" X 24" Perforated Return, Mitus PAR	1, 2, 3

- NOTES:
- Seal perimeter of diffusers/grilles to prevent moisture migration from attic space
 - Insulate backpanel to prevent condensation (R-6, minimum).
 - Coordinate with owner / architect for color and finish

EXHAUST FAN SCHEDULE								
Tag	Service	Fan		Power		Make / Model	Remarks	
		Airflow (CFM)	TSP (" wc)	VAC	Ph			Amps
EF-1	Restroom Exhaust	150	0.1	120	1	0.31	Panasonic FV-1115VQ1	1, 2, 3
EF-2	Computer Room	110	0.1	120	1	0.31	Panasonic FV-0511VQC1	2, 3, 4

- NOTES:
- Fan to be interlocked with light wall switch
 - Furnish w/ ceiling grille and wall cap
 - Install in accordance with manufacturer's recommendations
 - Install an inline thermostat



33 MECHANICAL PLAN
SCALE: 1/8" = 1'-0"

34 PLUMBING PLAN
SCALE: 1/8" = 1'-0"

35 PLUMBING RISER
SCALE: 3/16" = 1'-0"

LEGEND

- CFM NECK SIZE/MARK
- SUPPLY AIR GRILLE 4-WAY
- RETURN AIR GRILLE
- EXHAUST FAN
- THERMOSTAT
- SUPPLY AIR DUCT
- RETURN AIR DUCT
- DAMPER CONTROL (V.D.)
- ROUND FLEX DUCT, MAX LENGTH 12'-0", MIN. R-6. DUCT SIZE AS FOLLOWS:
 250 CFM TO 350 CFM = 4"
 200 CFM TO 250 CFM = 6"
 150 CFM TO 200 CFM = 8"
 100 CFM TO 150 CFM = 6"

DAMMON ENGINEERING, INC.
LOUISIANA & MISSISSIPPI

Chief Engineer: Brian Mistich, PE
554 Old Spanish Trail
Shreveport, LA 71458
www.dammonengineering.com
info@dammonengineering.com
PH: 985.649.8832

#	DESCRIPTION	DATE
1	Revised ductwork and computer room	11/15/2023

SEAL:

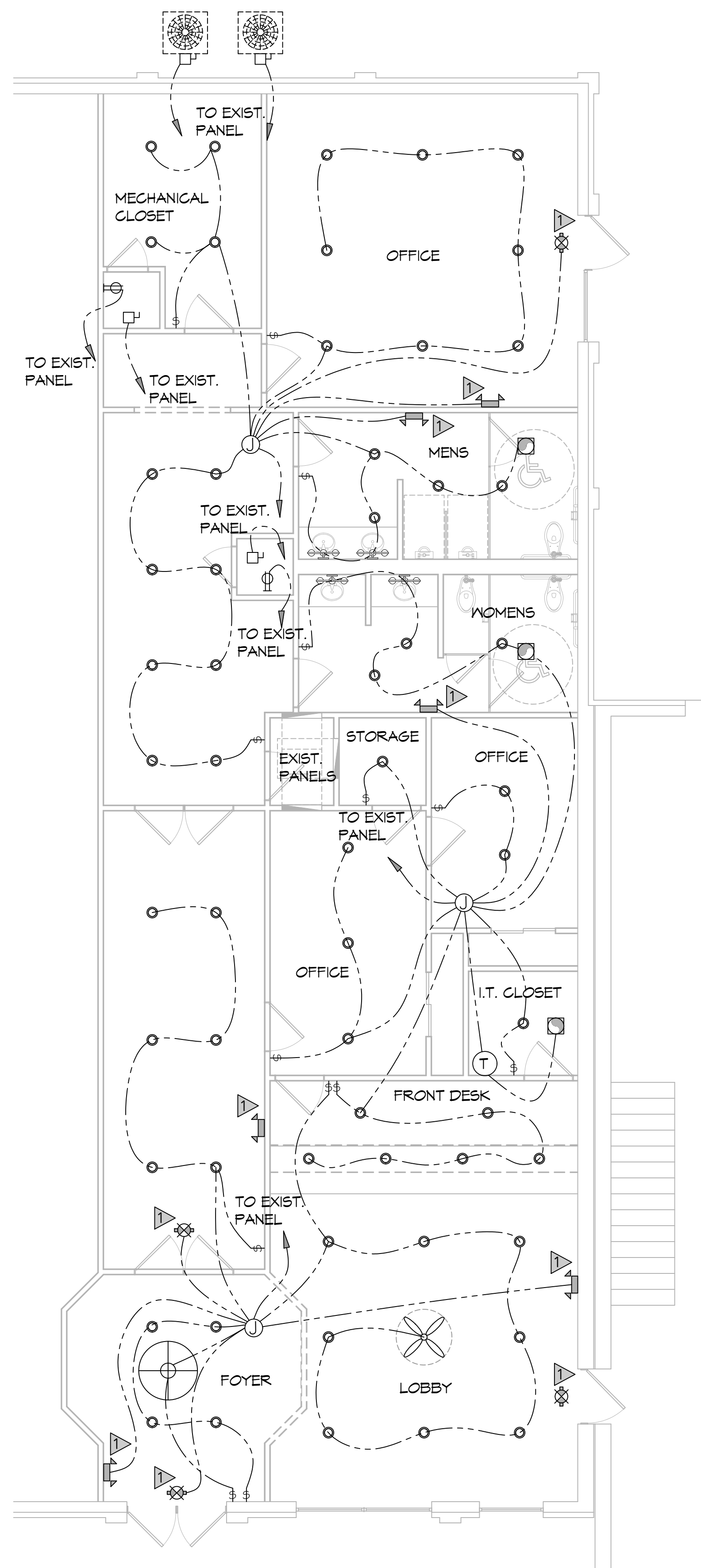
NEW PARTIAL RENOVATION
RED ROOF INN

1662 GAUGE BLVD., SUITE 100, SHREVEPORT, LA 71458
JOB No.: 2451 | DATE: 11-07-2023
DRAWN BY: SCK | CHECKED BY: CKD

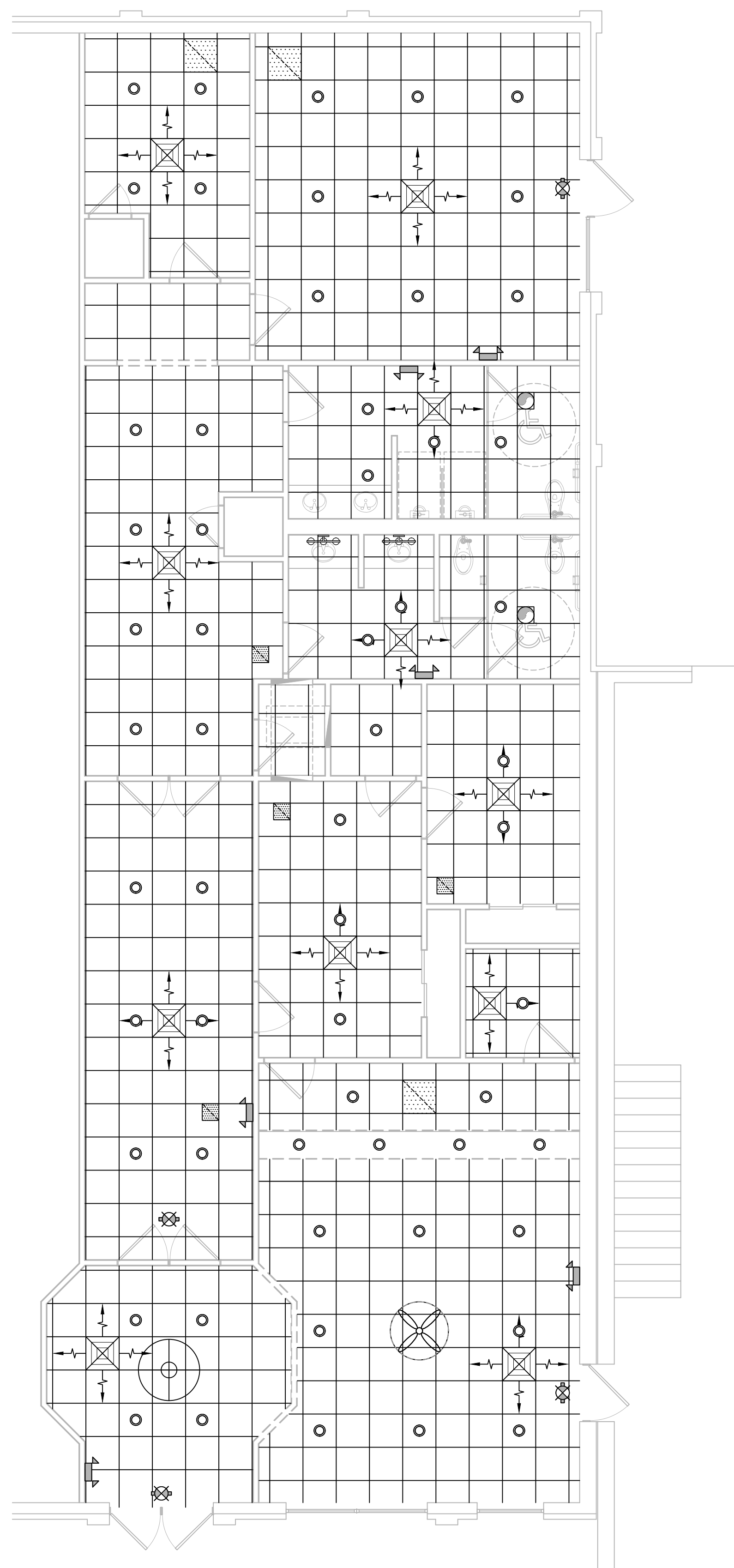
SHEET TITLE:
MECHANICAL PLAN

DRAWING NUMBER:
M101

SHEET No. 9 of 10



36 ELECTRICAL PLAN
SCALE: 3/16"=1'-0"



37 REFLECTIVE CEILING PLAN
SCALE: 3/16"=1'-0"

KEYED NOTES

1. PROVIDE CONNECTION TO UN-SWITCHED HOT OF LIGHTING CIRCUIT AND SHALL HAVE 90 MINUTE EMERGENCY BATTERY BACKUP.

LIGHTING LEGEND

- EXIT LIGHT FIXTURE - CEILING MOUNTED
- EMERGENCY LIGHT - WALL MOUNTED
- VANITY LIGHT
- JUNCTION BOX
- 5" RECESSED CAN LIGHT
- EXHAUST FAN
- CHANDELIER

POWER LEGEND

- STANDARD 120V DUPLEX RECEPTACLE, 15" AFF (UNLESS OTHERWISE NOTED)
- FUSED DISCONNECT, FUSE PER MANUFACTURER'S RECOMMENDATIONS.
- SINGLE POLE SWITCH
- IN-LINE THERMOSTAT

GENERAL LIGHTING NOTES

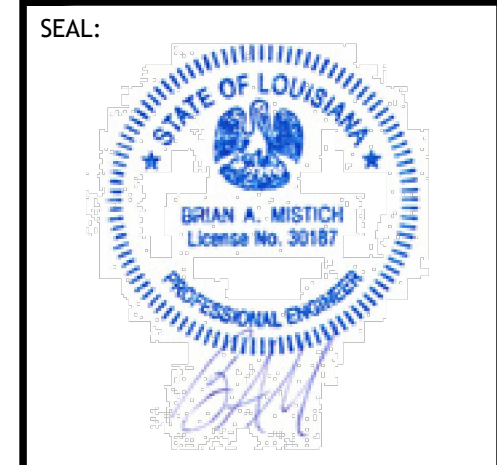
1. ALL WORK SHALL COMPLY WITH APPLICABLE NATIONAL, STATE, AND LOCAL CODES, RULES, REGULATIONS, AND REQUIREMENTS OF THE SERVICE UTILITY COMPANY.
2. GENERAL CONTRACTOR SHALL NOTIFY THE ARCHITECT IMMEDIATELY IF ANY CONFLICTS OCCUR BETWEEN LIGHTING AND ANY OTHER TRADE. DO NOT PROCEED WITH INSTALLATION IN THAT AREA UNTIL CONFLICT HAS BEEN RESOLVED TO THE SATISFACTION OF THE ARCHITECT AND ENGINEER.
3. REFER TO ARCHITECTURAL DRAWINGS FOR EXACT LOCATION AND MOUNTING INSTRUCTIONS FOR ALL LIGHT FIXTURES. NOTIFY THE ARCHITECT AND ENGINEER OF ANY DISCREPANCIES BETWEEN THESE PLANS AND THE ARCHITECTURAL PLANS RELATING TO QUANTITY, TYPE AND LOCATION OF DEVICES AND/OR FIXTURES.
4. WHEN SPECIFIC LIGHT FIXTURE HAS BEEN SPECIFIED IN THE FIXTURE SCHEDULE, ELECTRICAL CONTRACTOR SHALL PROVIDE COMPLETE ASSEMBLY INCLUSIVE ALL PARTS AND HARDWARE TO INSURE PROPER FUNCTIONING FIXTURE.
5. ALL CONDUCTORS SHALL BE A MINIMUM OF #12 AWG UNLESS NOTED OTHERWISE.
6. ALL 120V RUNS LONGER THAN 60 FEET SHALL BE #10 AWG AND 277V RUNS LONGER THAN 150 FEET SHALL BE #10 AWG UNLESS NOTED OTHERWISE.
7. ALL CONDUCTORS SHALL BE COPPER.
8. WHERE CONDUCTOR SIZES ARE NOTED ON DRAWINGS, THAT WIRE SIZE SHALL BE THROUGH THE ENTIRE RUN UNLESS OTHERWISE NOTED.
9. MOUNTED LIGHT SWITCHES 48" AFF UNLESS NOTED OTHERWISE ON ARCHITECTURAL DRAWINGS.
10. WHERE MORE THAN ONE SWITCH OCCURS IN THE SAME LOCATION, THEY SHALL BE INSTALLED IN A GANG TYPE BOX UNDER ONE COVER PLATE. ALL GANGED SWITCHES SHALL HAVE A COMMON SEAMLESS FACEPLATE. EACH MULTI-GANGED BOX SHALL BE NO MORE THAN SIX (6) SWITCHES WIDE. WHERE MORE THAN SIX (6) SWITCHES ARE SHOWN AT ONE (1) LOCATION, ADDITIONAL MULTI-GANGED BOXES SHALL BE STACKED VERTICALLY AND THE WIDTH OF THE MULTI-GANGS SHALL BE AS EVEN AS POSSIBLE.
11. EACH DIMMER SWITCH SHALL HAVE A WATTAGE RATING 25% HIGHER THAN THE TOTAL WATTAGE OF ALL LIGHTS TO BE CONTROLLED BY THE DIMMER. DIMMER SIZES 600, 1000, 1500, AND 2000 WATTS. LUTRON NOVA T-STAR. WHERE SWITCHES ARE GANGED WITH DIMMERS, THE SWITCHES SHALL ALSO BE LUTRON NOVA T-STAR. FLUORESCENT AND LOW VOLTAGE DIMMERS SHALL BE LUTRON NOVA T-STAR.
12. ALL EMERGENCY EXIT LIGHT FIXTURES SHALL HAVE 90 MINUTE BATTERY BACKUP WITH INTEGRAL TEST BUTTON AND SHALL BURN CONTINUOUSLY.
13. ALL FLUORESCENT FIXTURES THAT UTILIZE DOUBLE-ENDED LAMPS AND CONTAIN BALLASTS SHALL BE PROVIDED WITH A DISCONNECTING MEANS IN ACCORDANCE WITH NEC 410.136.

GENERAL POWER NOTES

1. ALL WORK SHALL CONFORM TO THE LATEST EDITION OF THE NATIONAL ELECTRICAL CODE, THE GOVERNING ELECTRICAL CODE AND ALL OTHER INSPECTION DEPARTMENTS HAVING JURISDICTION. OBTAIN CERTIFICATES OR APPROVAL WHERE REQUIRED. ELECTRICAL CONTRACTOR SHALL VERIFY ALL WIRE AND CONDUIT SIZES FOR MECHANICAL EQUIPMENT TO BE INSTALLED.
2. ALL MATERIALS FURNISHED SHALL BE NEW AND SHALL BE U.L. LISTED.
3. THE DRAWINGS INDICATE SIZE AND GENERAL LOCATION OF WORK. SCALE DIMENSIONS SHALL NOT BE USED. THE EXACT LOCATION OF ALL LIGHTING FIXTURES, RECEPTACLES AND TELEPHONE OUTLETS, ETC. SHALL BE DETERMINED BY ACTUAL CONDITIONS IN THE FIELD.
4. PRIOR TO BIDDING, CONTRACTOR SHALL VISIT THE JOB SITE AND FAMILIARIZE THEMSELVES WITH THE EXISTING CONDITIONS.
5. ELECTRICAL CONTRACTOR SHALL COORDINATE HIS WORK WITH OTHER TRADES AND WITH OTHER CONTRACTORS WHOSE WORK MAY AFFECT THIS INSTALLATION.
6. ELECTRICAL CONTRACTOR SHALL COORDINATE INCOMING ELECTRICAL SERVICE WITH UTILITY COMPANY AND INCLUDE IN HIS BID ALL CHARGES AND FEES INCURRED IN MODIFICATIONS.
7. ELECTRICAL CONTRACTOR SHALL COORDINATE THE TELEPHONE INSTALLATION WITH THE TELEPHONE COMPANY AND THE GENERAL CONTRACTOR.
8. ELECTRICAL CONTRACTOR, BEFORE INSTALLING ANY OF THE WORK, SHALL SEE THAT IT DOES NOT INTERFERE WITH CLEARANCES REQUIRED FOR FINISHED CEILINGS, HUNG CEILINGS, PLASTER, PARTITIONS, WALLS, ETC. AS SHOWN IN THE ARCHITECTURAL DRAWINGS AND DETAILS. IF ANY WORK IS INSTALLED AND IT LATER DEVELOPS THAT SUCH DETAILS OR DESIGN CANNOT BE FOLLOWED, THE CONTRACTOR, AT HIS OWN EXPENSE, SHALL MAKE SUCH CHANGES IN THE WORK AS DIRECTED BY THE ARCHITECT, AS WELL AS TO PERMIT THE INSTALLATION OF THE ARCHITECTURAL WORK AS SHOWN ON THE PLANS AND DETAILS.
9. PERFORM TEST REQUIRED BY THE OWNER OR THE ENGINEER IN CONNECTION WITH THE OPERATION OF THE ELECTRICAL SYSTEM IN THE BUILDING. ALL TESTS SHALL BE MADE IN ACCORDANCE WITH THE LATEST STANDARD OF THE IEEE AND THE NATIONAL ELECTRICAL CODE.
10. MINIMUM CONDUCTOR SIZE SHALL BE #12, 600V INSULATION.
11. MINIMUM SIZE CONDUIT SHALL BE 3/4" ELECTRICAL METALLIC TUBING (EMT) FOR INTERIOR USE, 3/4" SCHEDULE 80 PVC FOR EXTERIOR USE ABOVE GRADE AND 1" SCHEDULE 40 PVC FOR EXTERIOR USE BELOW GRADE. BURIED A MINIMUM OF 18" FOR NON-VEHICULAR TRAFFIC AREAS AND 36" IN VEHICULAR TRAFFIC AREAS. EMT SHALL BE USED WITH METAL STUD CONSTRUCTION AND ALL ASSEMBLY OCCUPANCIES. USE NMC IN WOOD CONSTRUCTION. CONTRACTOR SHALL INSTALL WIRING, CIRCUIT BREAKERS AND OTHER CIRCUIT COMPONENTS TO MATCH EQUIPMENT ACTUALLY INSTALLED.
12. ALL 120V RUNS LONGER THAN 60 FEET SHALL BE #10 AWG AND 277V RUNS LONGER THAN 150 FEET SHALL BE #10 AWG UNLESS NOTED OTHERWISE.
13. INSTALL GROUND FAULT RECEPTACLES AT RECEPTACLE LOCATIONS WITHIN 5' OF SINKS OR LAVATORIES, AND AT EXTERIOR LOCATIONS. EXTERIOR RECEPTACLES SHALL ALSO BE WATERPROOF. ALL RECEPTACLES IN THE WAITING AREA SHALL HAVE BE TAMPER PROOF.
14. BONDING AND GROUNDING SHALL BE IN ACCORDANCE WITH NFPA 70:250-69, NFP 250-23, 250-11 & 250-12.
15. GROUND NEUTRAL IN ACCORDANCE WITH NFPA 70:250-230.
16. FUSES SHALL BE ITC CLASS K5, 250 VOLT, 200,000 AMP INTERRUPTING CAP.
17. PROVIDE SERVICES OF A FIRE/SMOKE DETECTION AND ALARM COMPANY TO DESIGN AND INSTALL ALARM SYSTEM TO MEET REQUIREMENTS OF THE STATE FIRE MARSHALL AND THE FIRE DISTRICT.
18. EXTERIOR LIGHTING SHALL BE SHADED OR INWARDLY DIRECTED IN SUCH A MANNER SO THAT NO DIRECT LIGHTING OR GLARE IS CAST BEYOND THE PROPERTY LINE. THE INTENSITY OF SUCH LIGHTING SHALL NOT EXCEED ONE FOOT CANDLE AS MEASURED AT THE ABUTTING PROPERTY LINE.
19. ALL ELECTRICAL, MECHANICAL AND PLUMBING PENETRATING FIRE PARTITIONS SHALL BE FIRE CAULKED. (PENETRATIONS THROUGH RATED CONSTRUCTION SHALL BE SEALED WITH A MATERIAL CAPABLE OF PREVENTING THE PASSAGE OF FLAMES AND HOT GASES WHEN TESTED IN ACCORDANCE WITH ASTM-E814.)
20. VERIFY ELECTRICAL CONNECTIONS PER MANUFACTURER'S RECOMMENDATIONS.
21. ALL BRANCH CIRCUITS SERVING PATIENT CARE AREAS SHALL PROVIDE AN EFFECTIVE GROUND-FAULT CURRENT PATH BY INSTALLATION IN A METAL RACEWAY SYSTEM OR A MEDICAL GRADE MC CABLE (NEC ART. 517.13(A & B)).

DAMMON ENGINEERING, INC.
LOUISIANA & MISSISSIPPI
www.dammonengineering.com
info@dammonengineering.com
PH: 985.649.5832

#	DESCRIPTION	DATE
1	ADD/REV EXHAUST FANS	11/19/2023



NEW PARTIAL RENOVATION
RED ROOF INN
1665 61/2 AVENUE BLVD.
SUITE 101
SUDBURY, LA 70456
JOB No: 2451
DATE: 11-07-2023
DRAWN BY: SCM
CHECKED BY: GKD

SHEET TITLE:
ELECTRICAL AND REFLECTIVE CEILING PLAN
DRAWING NUMBER:
E101
SHEET No: 10 of 12