

UPLIFT CONNECTIONS- I 10MPH WINDS EXPOSURE "B"						
CONNECTION	FRAMING SPACING (in.)	ROOF SPAN (ft.)	U	L	S	NUM. OF 8d COM. NAILS OR 10d BOX NAILS IN EA. END OF 1'-1/4"x20 GA. STRAP
ROOF ASSEMBLY TO WALL ASSEMBLY	16" O.C.	17	366	246	109R	4
WALL ASSEMBLY TO WALL ASSEMBLY	16" O.C.	17	366	246	109R	4
WALL ASSEMBLY TO FOUNDATION	16" O.C.	17	170	185	436	4

### THERMAL COMPONENT CRITERIA (U-FACTOR AND R-VALUE)

MINIMUM INSULATION R-VALUE					
MAX. GLAZING U-FACTOR	CEILING	WALLS	FLOORS	BASEMENT WALLS	CREAM SPACE WALLS
.75	R-26	R-13	R-11	R-5	R-5

### WALL SHEATH, OR CLAD, REQ. FOR WIND LOAD-EXPOSURE "B"

SHEATHING LOCATION	STUD SPAC.	MAX. NAIL SPAC. FOR 8d NAILS (INCHES, O.C.)	
		E	F
INTERIOR ZONE	12" O.C.	6	12
	16" O.C.	6	12
	24" O.C.	6	12
PERIMETER EDGE ZONE	12" O.C.	6	12
	16" O.C.	6	12
	24" O.C.	6	12
130 MPH WINDS-EXPOSURE "B" (TPF)			

### WINDBORNE DEBRIS PROTECTION FASTENING SCHEDULE FOR WOOD STRUCTURAL PANELS

FASTENER TYPE	FASTENER SPACING		
	4 FOOT PANEL SPAN ≤ 4 FOOT	4 FOOT PANEL SPAN ≤ 6 FOOT	6 FOOT PANEL SPAN ≤ 8 FOOT
2 1/2" x 6" WOOD SCREWS	16"	16"	12"
2 1/2" x 4" WOOD SCREWS	16"	16"	12"

WINDOWS IN BUILDINGS LOCATED IN WIND BORNE DEBRIS REGIONS SHALL HAVE GLAZED OPENINGS PROTECTED FROM WINDBORNE DEBRIS. WOOD STRUCTURAL PANELS WITH A MIN. THICKNESS OF 7/16" AND A MAX. SPAN OF 8 FEET SHALL BE PERMITTED FOR OPENING PROTECTION IN ONE AND TWO STORY BUILDINGS. PANELS SHALL BE PRECUT TO COVER THE GLAZED OPENINGS WITH ATTACHMENT HARDWARE PROVIDED.

### HEADER NAILING SCHEDULE

DESCRIPTION	NUM. OF COM. NAILS	NUM. OF BOX NAILS	SPACING
HEAD TO HEAD (FACE NAILED)	8d	10d	6" O.C. EDGES (FACE NAILED)

NOTE: ALL HEADERS SHALL HAVE SOLID BLOCKING

### DESIGN CRITERIA:

THE CONSTRUCTION FOR SAID RESIDENCE WHERE BASIC WIND SPEED IS 110 MILES PER HOUR, IS DESIGNED IN ACCORDANCE WITH: AMERICAN FOREST AND PAPER ASSOCIATION (AF&PA) NATIONAL DESIGN SPECIFICATIONS FOR LUMBER AND TWO FAMILY DWELLINGS (AF&PA) 2001, EDITION, AS WELL AS THE INTERNATIONAL RESIDENTIAL CODE (IRC) 2003 EDITION

### HOLD-DOWNS

HOLD-DOWNS ARE REQUIRED AT THE END OF EACH SEGMENTED SHEARWALL. WHEN FULL HEIGHT SHEARWALL SEGMENTS MEET AT A CORNER, A SINGLE HOLD-DOWN SHALL BE PERMITTED TO BE USED TO RESIST THE OVERTURNING FORCES IN BOTH DIRECTIONS WHEN THE CORNER FRAMING IN THE ADJOINING WALLS IS FASTENED TOGETHER TO TRANSFER THE UPLIFT LOAD. SEE CORNER HOLD-DOWN DETAIL.

### JACK STUD REQUIREMENTS-FOR INTERIOR LOADBEARING WALLS

HEADER SPAN (ft.)	ROOF SPAN (ft.)				
	12 FEET	5'	6.5'	5'	6.5'
2	1	1	1	1	1
4	1	1	1	1	1
6	1	1	1	1	1
8	1	1	1	1	1
10	1	1	1	1	1
12	1	1	1	1	1
14	2	2	2	2	2
16	2	2	2	2	2
18	3	3	3	3	3
20	4	4	4	4	4
22	5	5	5	5	5
24	6	6	6	6	6
26	7	7	7	7	7
28	8	8	8	8	8
30	9	9	9	9	9
32	10	10	10	10	10
34	11	11	11	11	11
36	12	12	12	12	12

### SILL OR BOTTOM PLATE TO FND. CONNECTIONS RESISTING UPLIFT LOADS- I 10MPH WINDS EXP. "B"

ANCHOR BOLT CONNECTION RESISTING UPLIFT LOADS	FOUNDATION SUPPORTING	MAX. ANCHOR BOLT SPACING (in.)	INTERIOR ZONES
	1-3 STOREYS	28	33

### SILL OR BOTTOM PLATE TO FND. CONNECTIONS RESISTING SHEAR LOADS- I 10MPH WINDS EXP. "B"

BOTTOM PLATE TO FND. ANCHOR BOLT CONNECTION RESISTING SHEAR LOADS	FOUNDATION SUPPORTING	MAX. ANCHOR BOLT SPACING (in.)	INTERIOR ZONES
	1-3 STOREYS	30	45

### HEADER SPANS-FOR INTERIOR LOADBEARING WALLS

HEADER SUPPORTING	BLDG. WIDTH (ft.)		
	12	24	36
(2)2x4's	4'-4"	3'-1"	2'-6"
(2)2x6's	6'-5"	4'-6"	3'-8"
(2)2x8's	8'-1"	5'-9"	4'-8"
(2)2x10's	9'-11"	7'-0"	5'-9"
(2)2x12's	11'-6"	8'-1"	6'-7"
(3)2x10's	10'-2"	7'-2"	5'-10"
(3)2x8's	12'-5"	10'-2"	8'-3"
(4)2x8's	11'-6"	8'-3"	6'-9"
(4)2x10's	14'-4"	10'-1"	8'-3"
(2)2x4's	2'-10"	2'-1"	1'-8"
(2)2x6's	4'-2"	3'-1"	2'-6"
(2)2x8's	5'-4"	3'-11"	3'-3"
(2)2x10's	7'-6"	4'-9"	3'-11"
(2)2x12's	9'-5"	5'-6"	4'-7"
(3)2x10's	8'-0"	4'-10"	4'-0"
(3)2x8's	9'-5"	5'-11"	4'-9"
(4)2x8's	7'-4"	5'-8"	4'-8"
(4)2x10's	9'-4"	6'-10"	5'-8"
(4)2x12's	10'-10"	8'-0"	6'-7"

\* MAX. SPAN EXCEEDS 16' SPANS LIM. TO 16'

NOTE: ALL HEADERS SHALL HAVE SOLID BLOCKING

### HEADER SPANS-EXPOSURE B FOR EXTERIOR LOADBEARING WALLS

HEADER SIZE	SPAN	NO. FULL HGT. STUDS REQ. AT EA. END
(2)2x4's	4'-7"	2
(2)2x6's	5'-6"	2
(2)2x8's	6'-1"	3
(2)2x10's	6'-9"	3
(2)2x12's	7'-5"	3
(3)2x10's	8'-3"	3
(3)2x8's	6'-9"	3
(4)2x8's	6'-7"	3
(4)2x10's	9'-5"	3
(4)2x12's	10'-0"	4

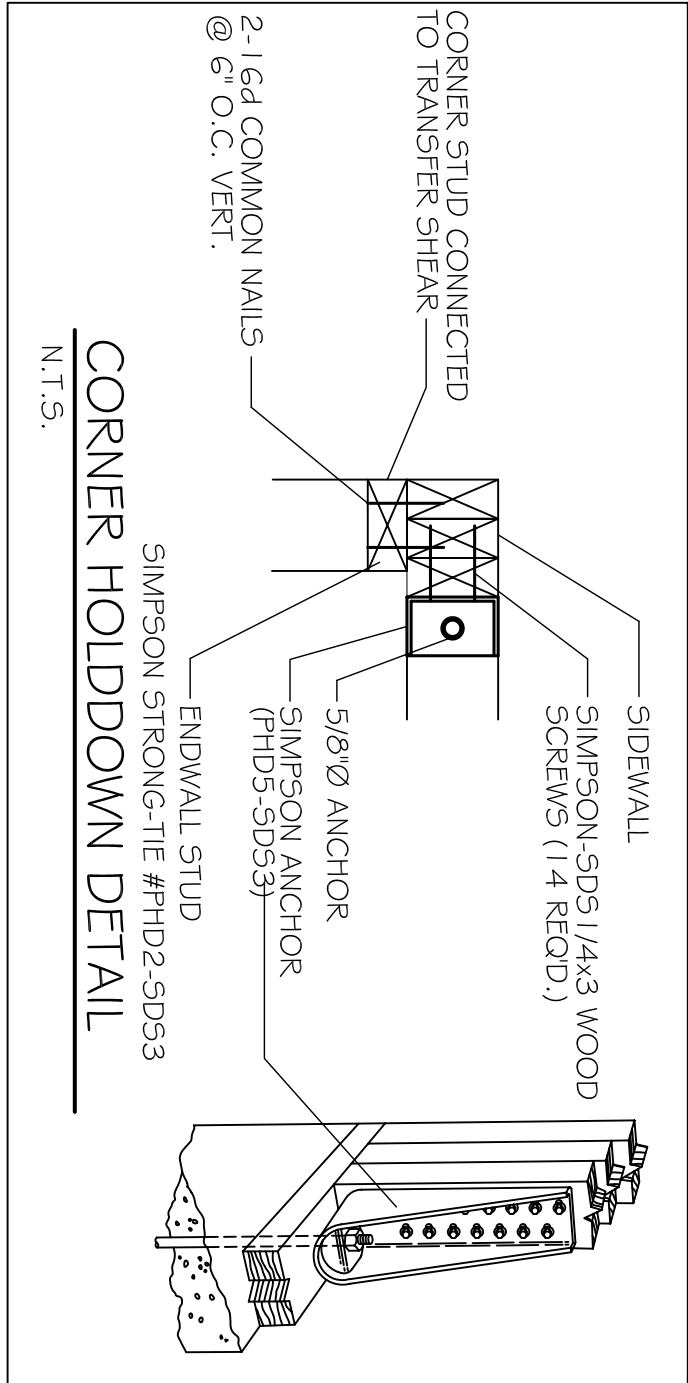
NOTE: 1. BLDG. WIDTH IS MEASURED PERPENDICULAR TO THE RIDGE. FOR WIDTHS BETWEEN THOSE SHOWN, SPANS ARE PERMITTED TO BE INTERPOLATED. 2. ALL HEADERS SHALL HAVE SOLID BLOCKING.

### JACK STUD REQ.-EXP. B FOR EXTERIOR LOADBEARING WALLS

HEADER SUPPORTING	HEADER SIZE	HEADER WIDTH (ft.)	NO. JACK STUDS REQ.
2	3" x 4.5"	5'	6.5'
4	1	1	1
6	2	2	2
8	3	3	3
10	4	4	4
12	5	5	5
14	6	6	6
16	7	7	7
18	8	8	8
20	9	9	9
22	10	10	10
24	11	11	11
26	12	12	12
28	13	13	13
30	14	14	14
32	15	15	15
34	16	16	16
36	17	17	17
38	18	18	18
40	19	19	19
42	20	20	20
44	21	21	21
46	22	22	22
48	23	23	23
50	24	24	24
52	25	25	25
54	26	26	26
56	27	27	27
58	28	28	28
60	29	29	29
62	30	30	30
64	31	31	31
66	32	32	32
68	33	33	33
70	34	34	34
72	35	35	35
74	36	36	36
76	37	37	37
78	38	38	38
80	39	39	39
82	40	40	40
84	41	41	41
86	42	42	42
88	43	43	43
90	44	44	44
92	45	45	45
94	46	46	46
96	47	47	47
98	48	48	48
100	49	49	49
102	50	50	50
104	51	51	51
106	52	52	52
108	53	53	53
110	54	54	54
112	55	55	55
114	56	56	56
116	57	57	57
118	58	58	58
120	59	59	59
122	60	60	60
124	61	61	61
126	62	62	62
128	63	63	63
130	64	64	64

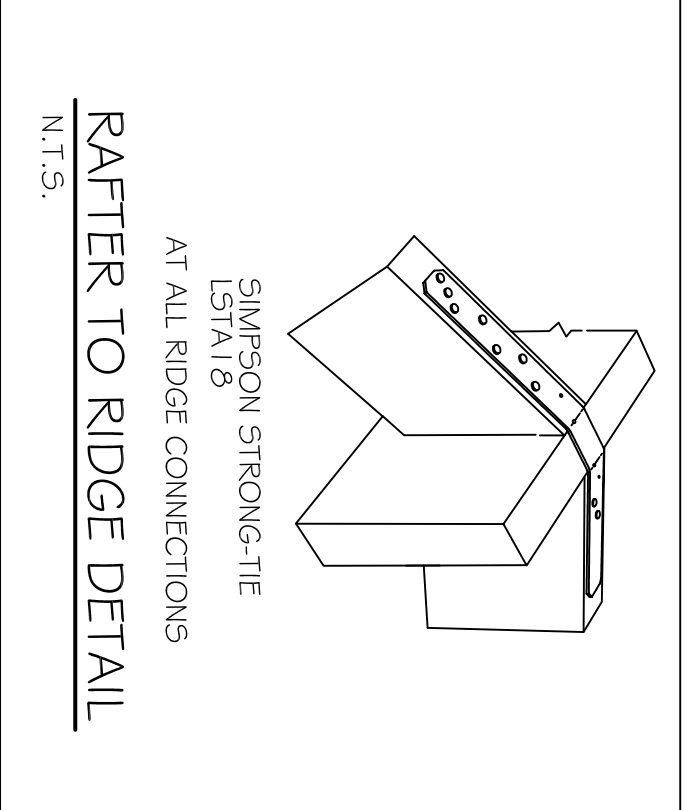
SHEATHING LOCATION	RAFTER/TRUSS SPAC.	MAX. NAIL SPAC. FOR 8d COM. NAILS (INCHES, O.C.)	
		E	F
INTERIOR ZONE	12" O.C.	6	12
	16" O.C.	6	12
	24" O.C.	6	12
PERIMETER EDGE ZONE	12" O.C.	6	12
	16" O.C.	6	12
	24" O.C.	6	12
130 MPH WINDS-EXPOSURE "B" (TPF)			

### ROOF SHEATH, OR CLAD, REQ. FOR WIND LOAD-EXP. B



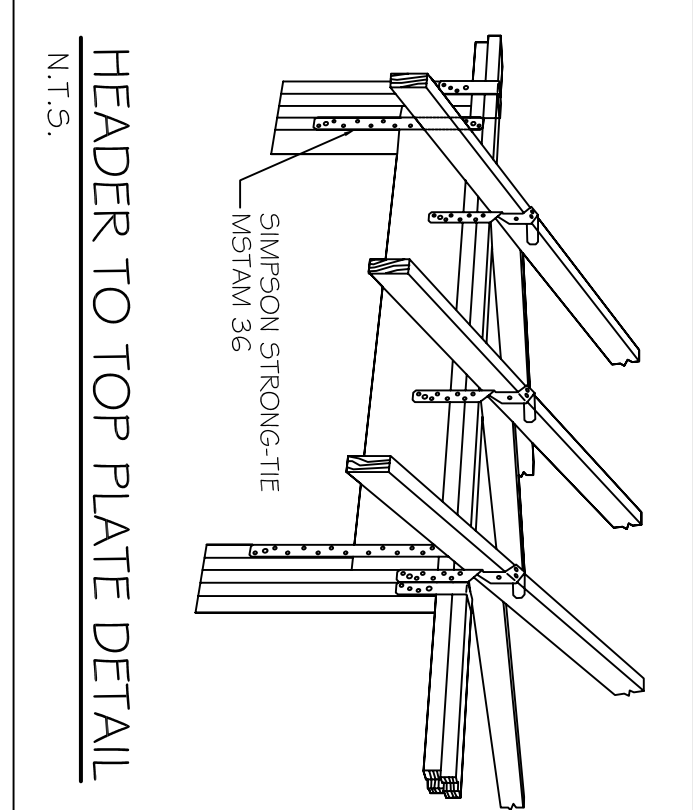
### CORNER HOLD-DOWN DETAIL

N.T.S.



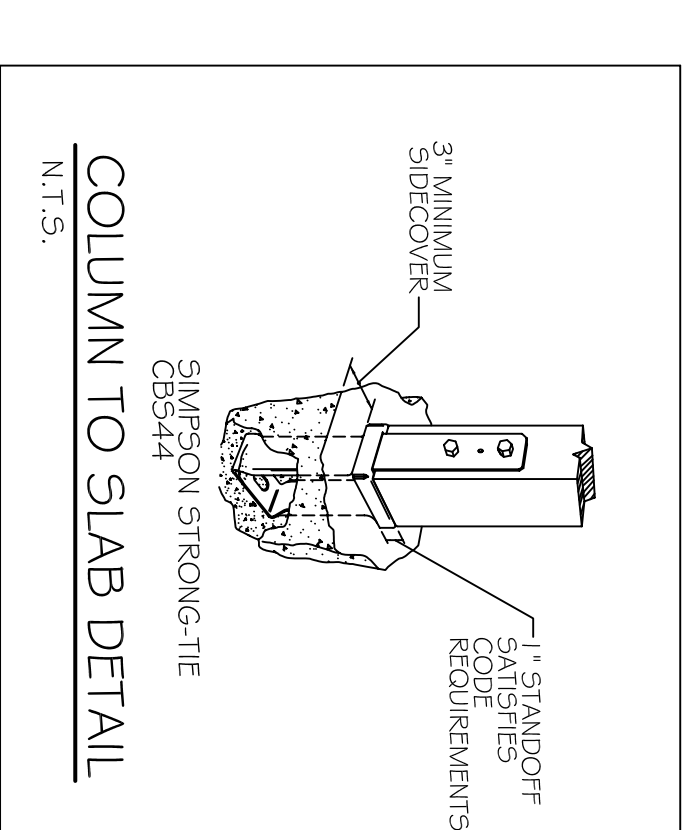
### RAFTER TO RIDGE DETAIL

N.T.S.



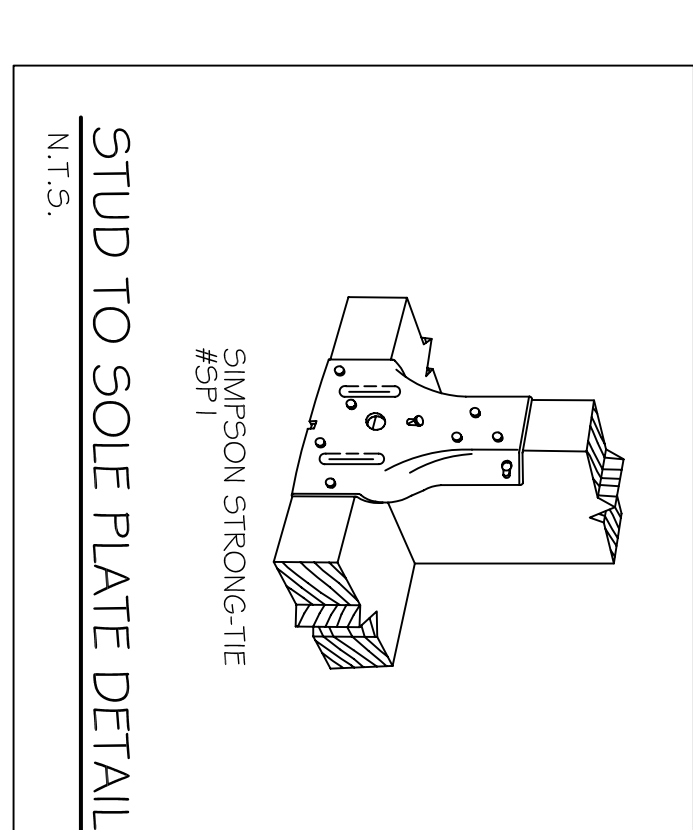
### HEADER TO TOP PLATE DETAIL

N.T.S.



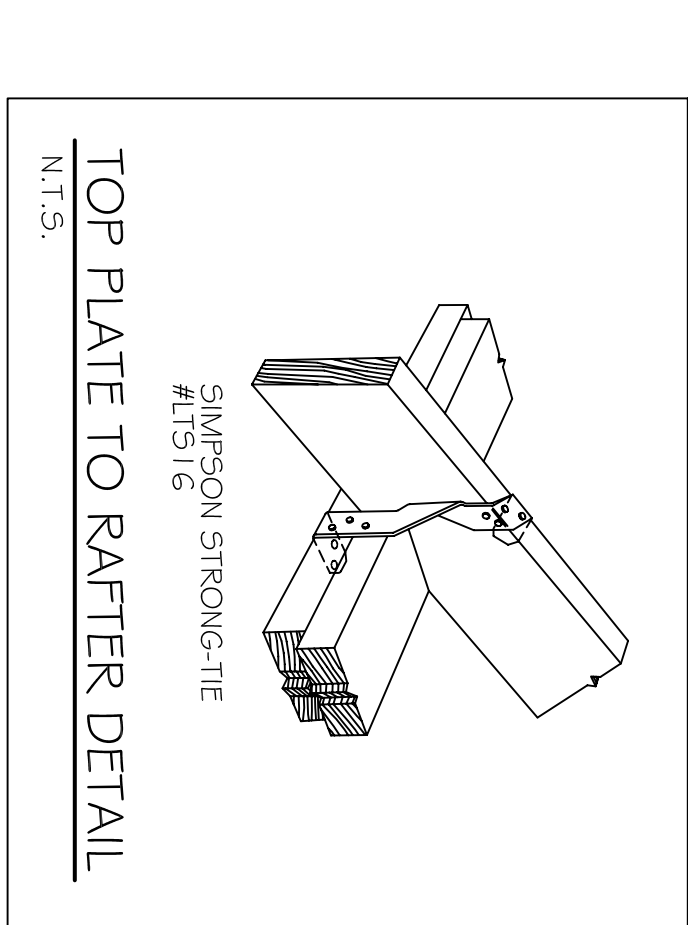
### COLUMN TO SLAB DETAIL

N.T.S.



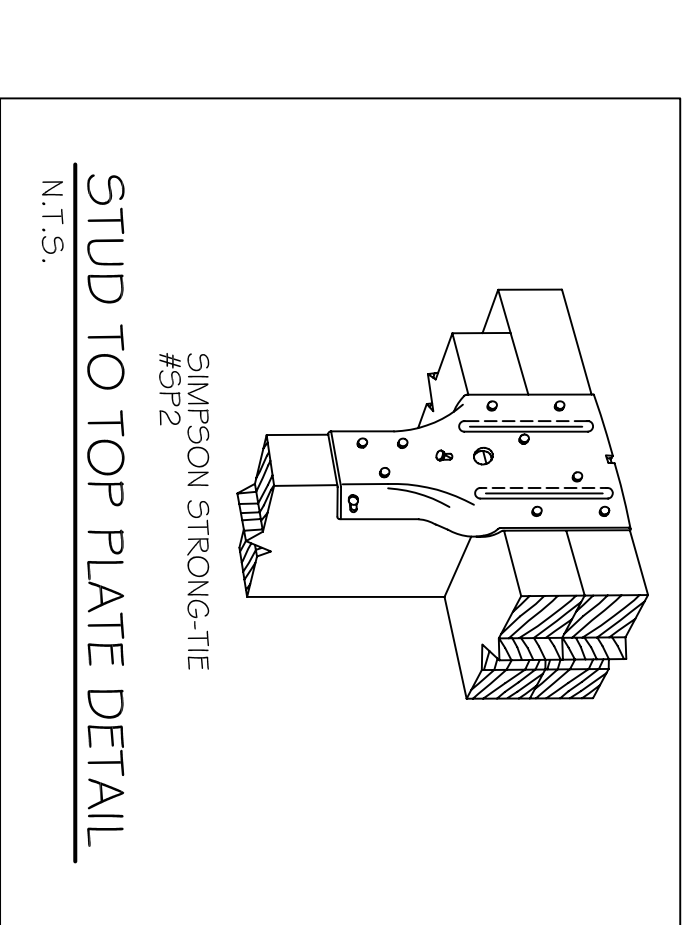
### STUD TO SOLE PLATE DETAIL

N.T.S.



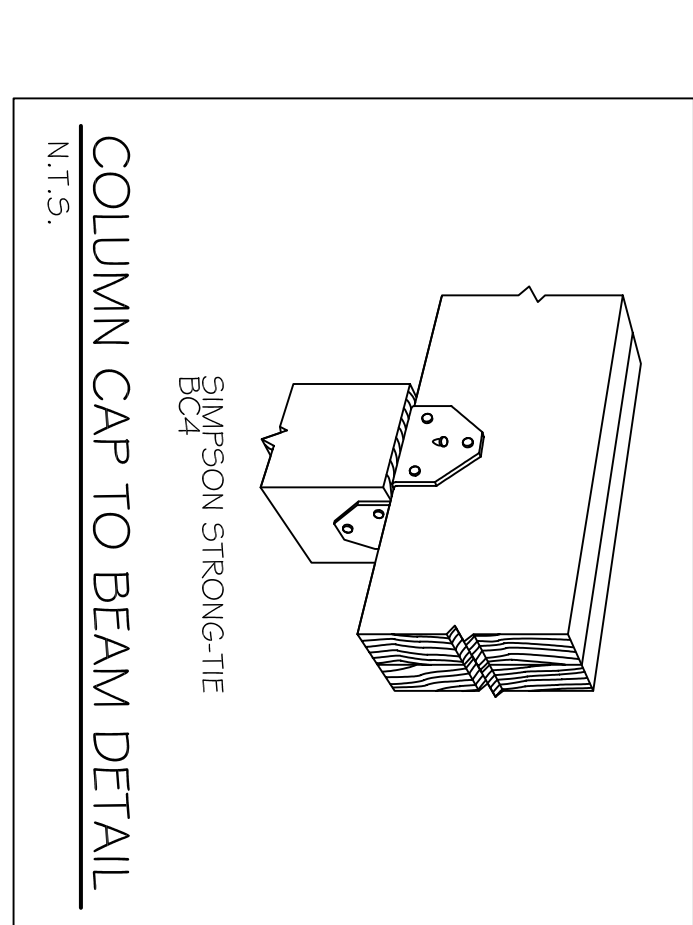
### TOP PLATE TO RAFTER DETAIL

N.T.S.



### STUD TO TOP PLATE DETAIL

N.T.S.



### COLUMN CAP TO BEAM DETAIL

N.T.S.

REVISIONS	DATE

FAIRFIELD INNS & SUITES			
CYPRESS CENTRE DRIVE VICKSBURG, MISSISSIPPI 39180			
JOB No:	2181	DATE:	08-01-2013
DRAWN BY:	JTL	CHECKED BY:	CKD

**DAMMON**  
ENGINEERING, INC.  
Architects & Engineers

CHIEF ENGINEER: EMMETT DAMMON, P.E.  
554 OLD SPANISH TRAIL  
SLUDEL, LA 70456

dammonengineering.com  
dammoneng@bellsouth.net  
PHONE: 985-649-5832  
FAX: 985-641-5990

PRELIMINARY (NOT FOR CONSTRUCTION)

STRAPPING DETAILS  
SHEET NO: 00 OF 00  
**A10**