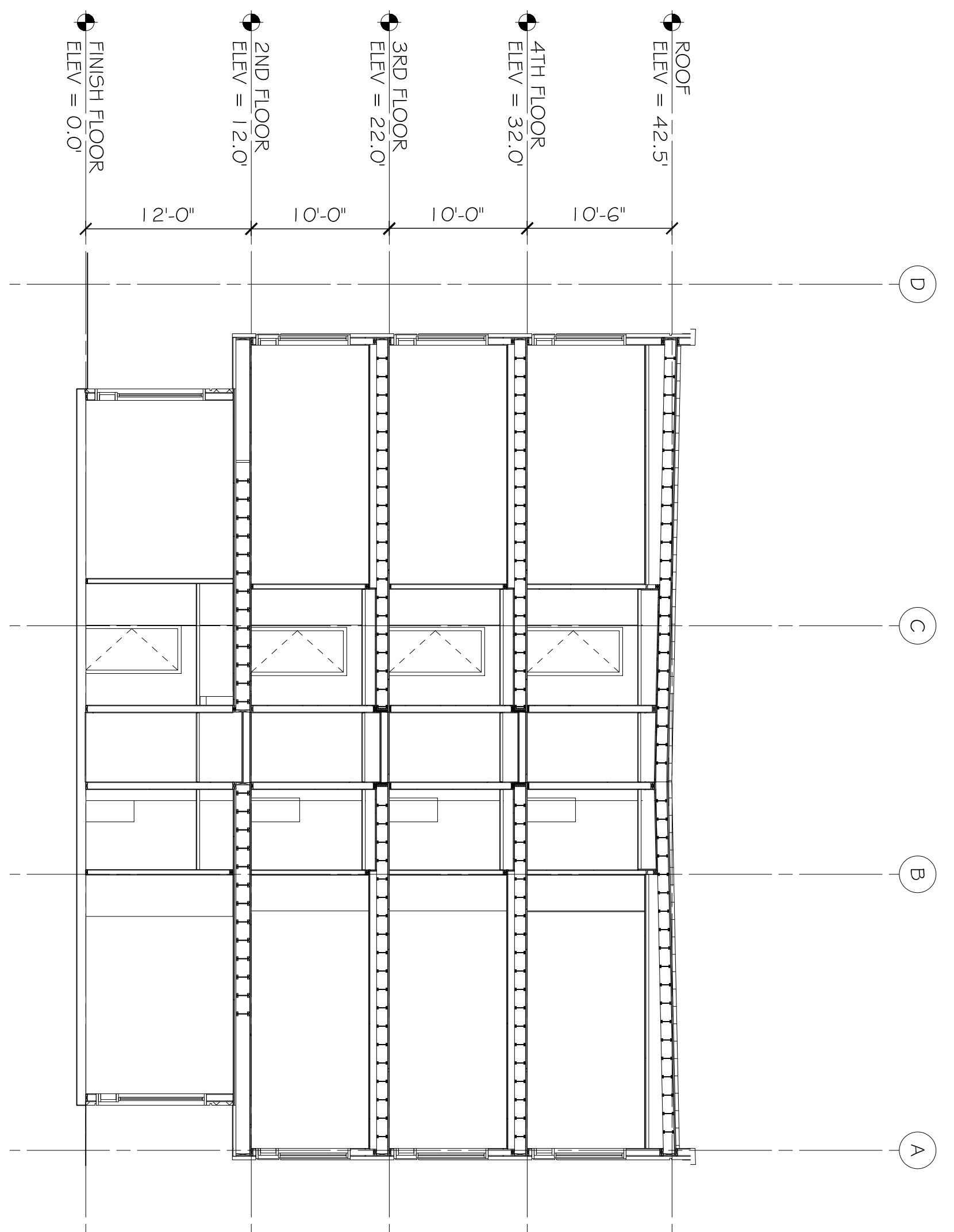
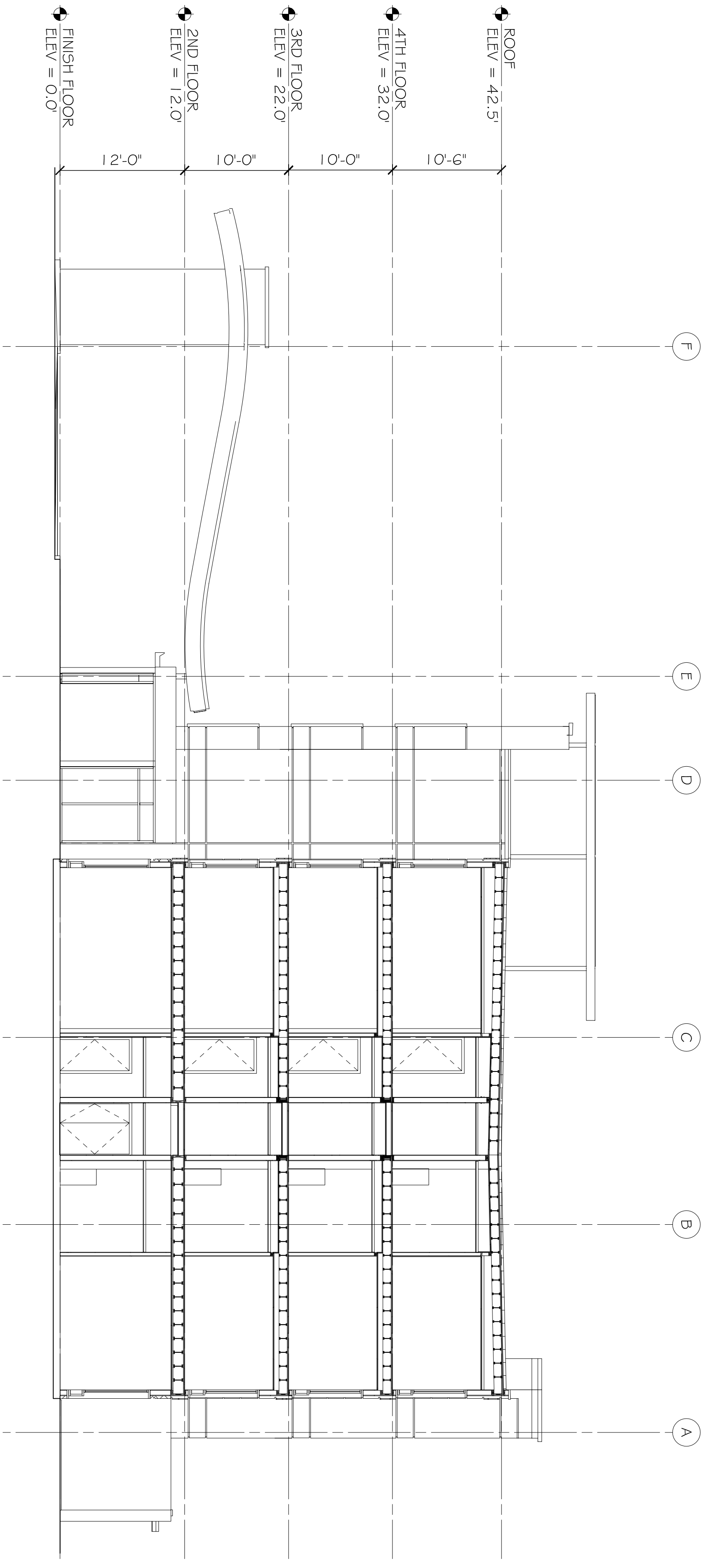


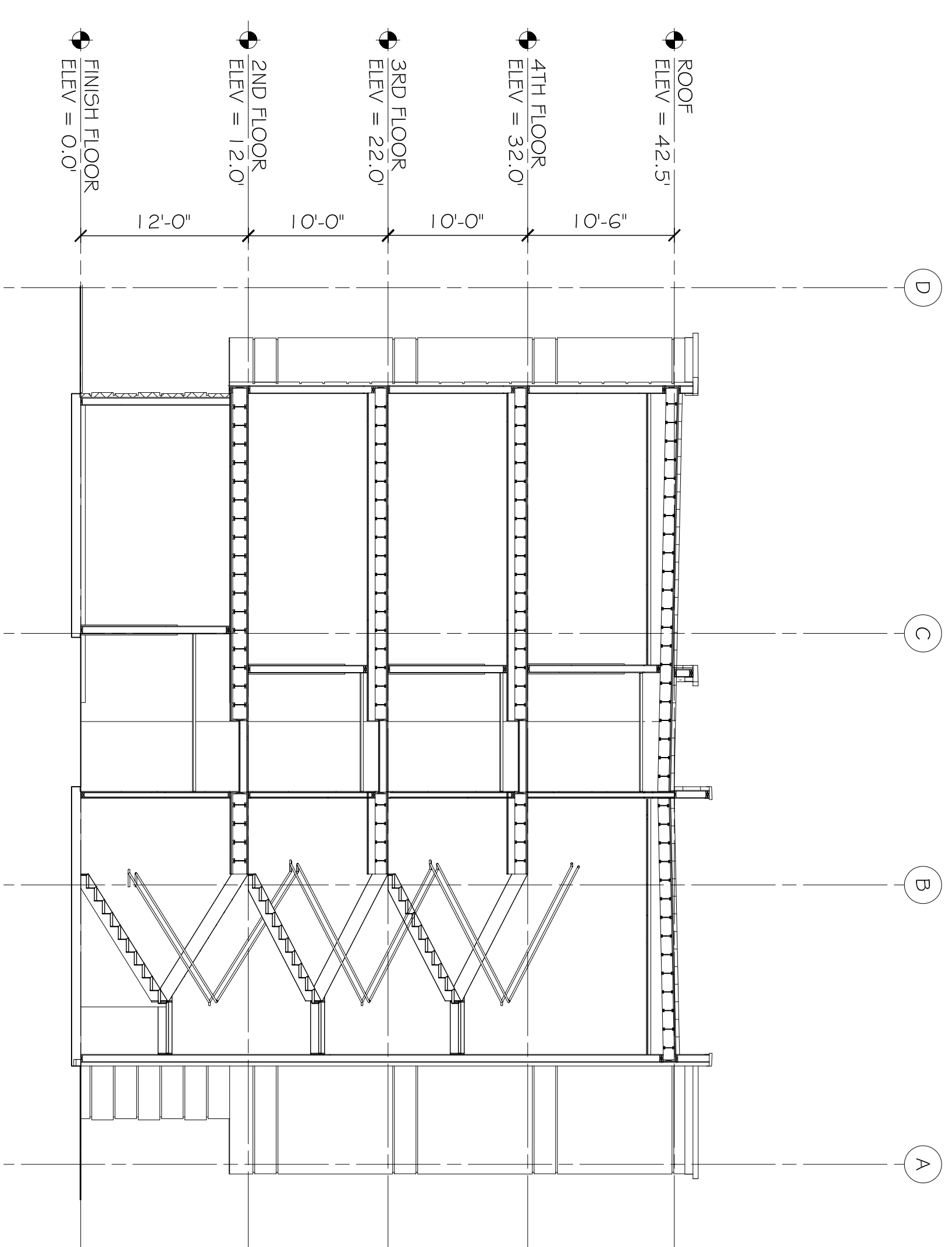
J BUILDING SECTION
SCALE: 1/8" = 1'-0"



G BUILDING SECTION
SCALE: 1/8" = 1'-0"



H BUILDING SECTION
SCALE: 1/8" = 1'-0"



F BUILDING SECTION
SCALE: 1/8" = 1'-0"

PRELIMINARY (NOT FOR CONSTRUCTION)

BUILDING SECTIONS
SHEET No: 00 OF 00
A 1 1

REVISIONS	
#	DESCRIPTION

FAIRFIELD INNS & SUITES
CYPRESS CENTRE DRIVE
VICKERBURG, MISSISSIPPI 39180

JOB No: 2181 DATE: 08-01-2013
DRAWN BY: JTL CHECKED BY: CKD

DAMMON ENGINEERING, INC.
Architects & Engineers

CHIEF ENGINEER: EMMETT DAMMON, P.E.
554 OLD SPANISH TRAIL
SLIDELL, LA 70458

The above drawings and specifications, designs and arrangements represented hereby are and shall remain the property of Dammon Engineering, and no part thereof shall be copied, abstracted or otherwise used in connection with any work or project other than the specific project for which the same were prepared and developed without written consent of Dammon Engineering. Visual contact with these drawings or specifications shall constitute conclusive evidence of acceptance of these restrictions.

dammonengineering.com
dammoneng@bellsouth.net
PHONE: 985-649-5832
FAX: 985-641-5950