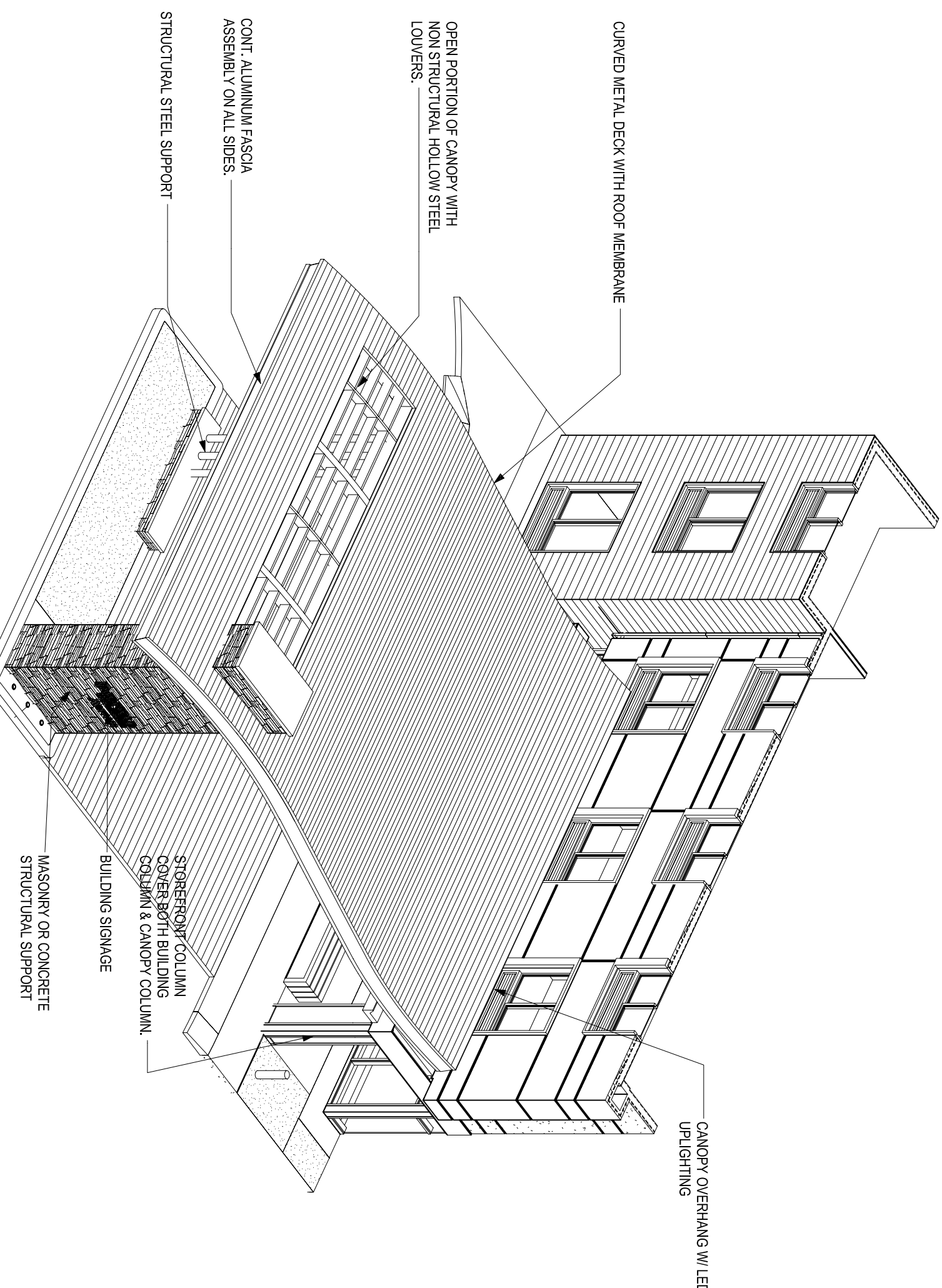


REFERENCE NOTES

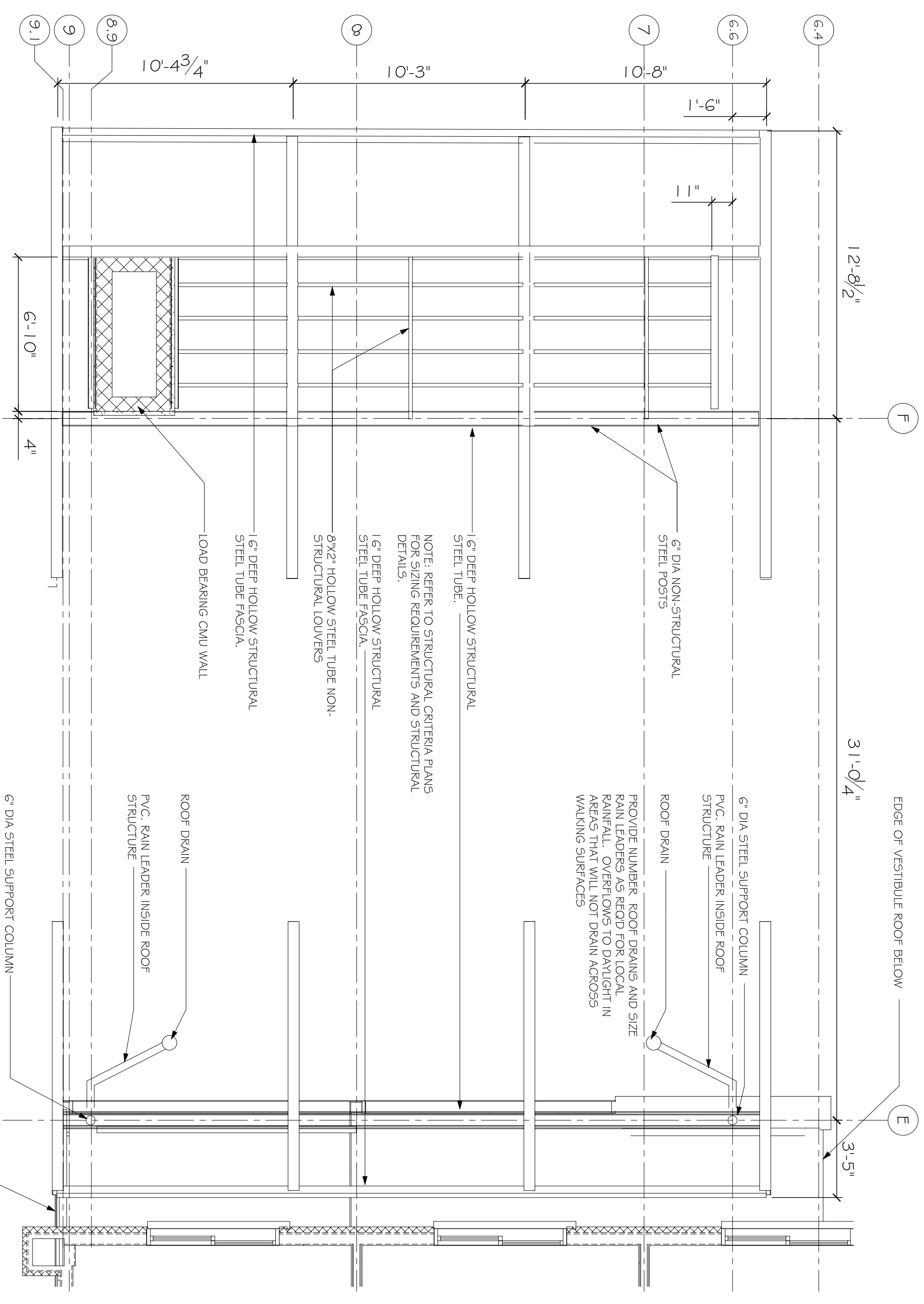
- A. STRUCTURAL INFORMATION SHOWN FOR ARCHITECTURAL GUIDELINES DO NOT CONSTITUTE INFORMATION REQUIRED FOR CONSTRUCTION AND CANNOT BE USED IN LIEU OF DRAWINGS PREPARED BY A REGISTERED STRUCTURAL ENGINEER.
- B. SEE 900 SERIES CRITERIA PLANS FOR ADDITIONAL INFORMATION ON STRUCTURAL SYSTEMS AND EXTERIOR LIGHTING.
- C. STRUCTURAL ENGINEER, TO PROVIDE FULL DESIGN SERVICES INCLUDING BUT NOT LIMITED TO DETERMINING SIZE AND SPACING OF MEMBERS BASED ON LOCAL CODE REQUIREMENTS, DESIGNING THE FOUNDATIONS BASED ON THE DESIGN LOADS, AND PROVIDING THE FOUNDATIONS DETAILING STRUCTURAL CONNECTIONS.
- D. ARCHITECT SHALL COORDINATE DRAWINGS WITH DETAILS ACCORDINGLY AND MODIFY DESIGN GUIDELINE DETAILS ACCORDINGLY.
- E. WALL SECTIONS ARE DRAWN TO PROVIDE INFORMATION AND RELATIONS BETWEEN STRUCTURAL SYSTEMS AND FINISHES WITH FINAL FINISH SELECTION AND MODIFY DESIGN GUIDELINE DETAILS ACCORDINGLY.
- F. REFER TO EXTERIOR FINISH SCHEDULE FOR ADDITIONAL INFORMATION ON FINISHES FOR PORTE COCHERE AND ADJACENT BUILDING AREAS.
- G. COORDINATE PORTE COCHERE DETAILS WITH ADJACENT SITE DETAIL. SEE OSO SERIES FOR ADDITIONAL INFORMATION.

CRITERIA NOTES

- 1. CULTURED ST. STONE VENER. SEE EXTERIOR FINISH SCHEDULE FOR MATERIAL SPECIFICATION.
- 2. STRUCTURAL CMU W/ SCORED FINISH ON OUTSIDE FACE. TO RECEIVE CULTURED STONE VENER ON MORTAR. PROVIDE CURVE FOR WORKER SEARCH COAT IN LIEU OF SCORED CMU.
- 3. CONCRETE FOOTINGS AND REINFORCED PROTECTION FOR VEHICLE IMPACT.
- 4. PORTE COCHERE ROOF DECK ASSEMBLY: FORWARD METAL DECKING CURVED TO FOLLOW BEAMS W/ (2) LAYERS OF OVERLAYBOARD AND ROOF MEMBRANE BEAMS (SEE NOTE #7).
- 5. SUSPENDED ALUMINUM PLANK CEILING SYSTEM W/ PRE FINISHED 2X8S ALUMINUM FINISH AND LED LIGHT JOISTS. SYSTEM BASED ON ANGSTROM METALWORKS LINEAR CEILING SYSTEMS. SEE SPECIFICATIONS FOR ADDITIONAL INFORMATION.
- 6. 6" DIA. STEEL COLUMN W/ STEEL BASE PLATE BELOW. PROVIDE BITUMINOUS COATING ON INTERIOR OF COLUMN.
- 7. 1/4" HOLLOW STEEL STRUCTURAL TUBE CURVE TO FOLLOW ROOF LINE. LAMINATED PRESURE PRESERVATIVE TREATED WOOD BEAMS AND DECKING MAY BE USED IN LIEU OF STRUCTURAL METAL BEAMS.
- 8. CONCRETE CURB.

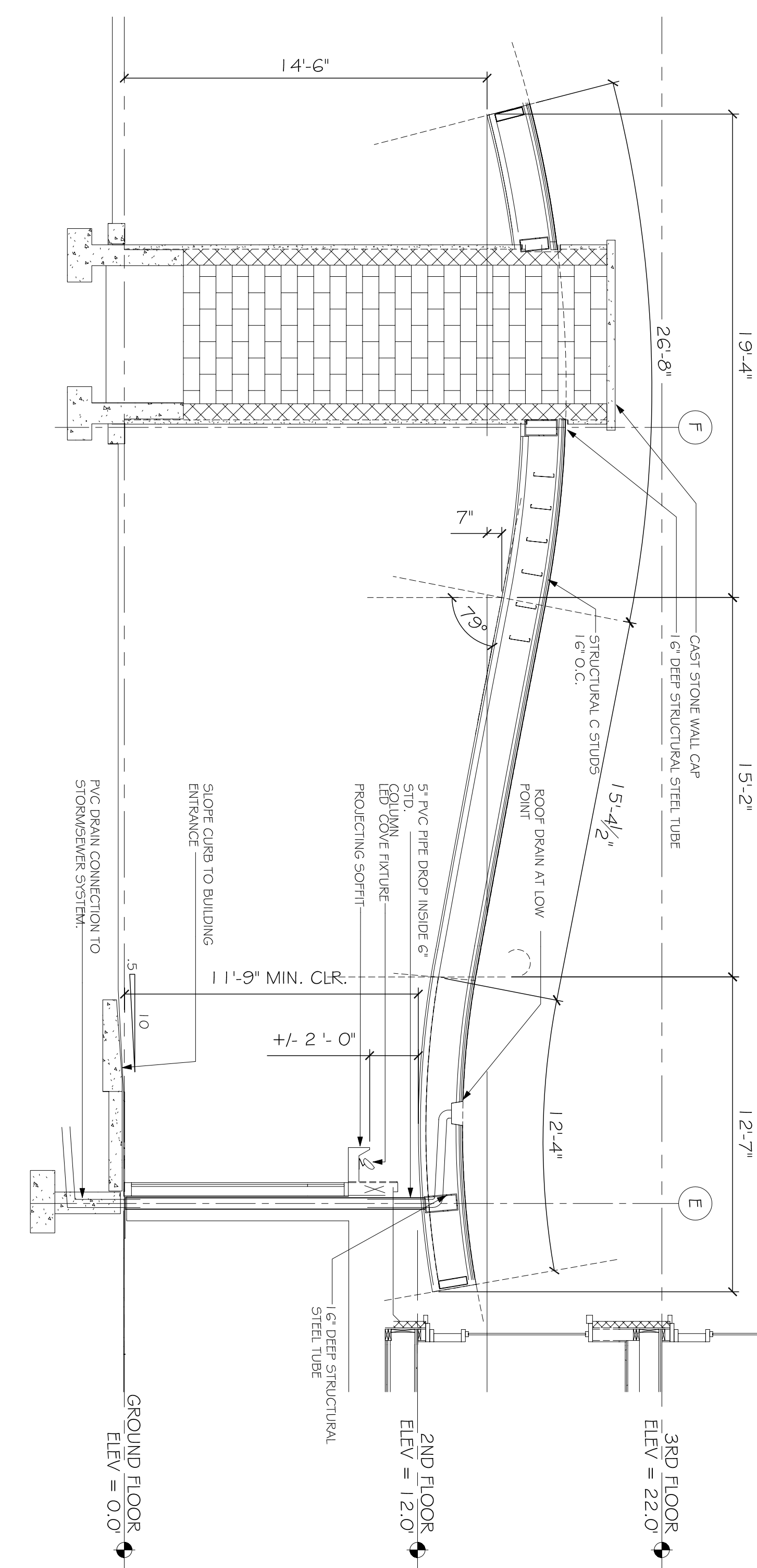


2 PORTE COCHERE ISOMETRIC ELEVATION
SCALE: 1/8" = 1'-0"

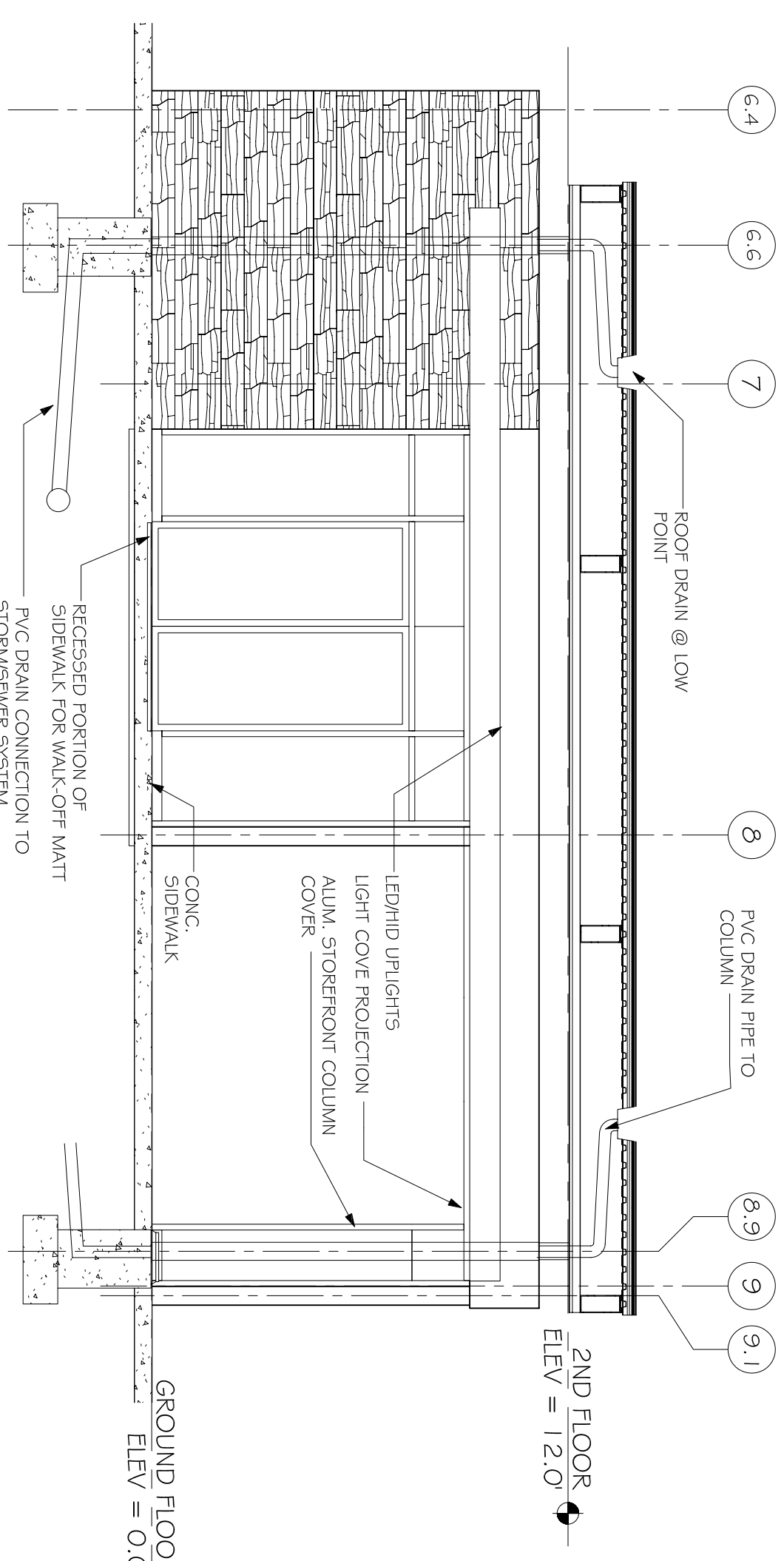


3 PORTE COCHERE ENLARGED PLAN
SCALE: 1/4" = 1'-0"

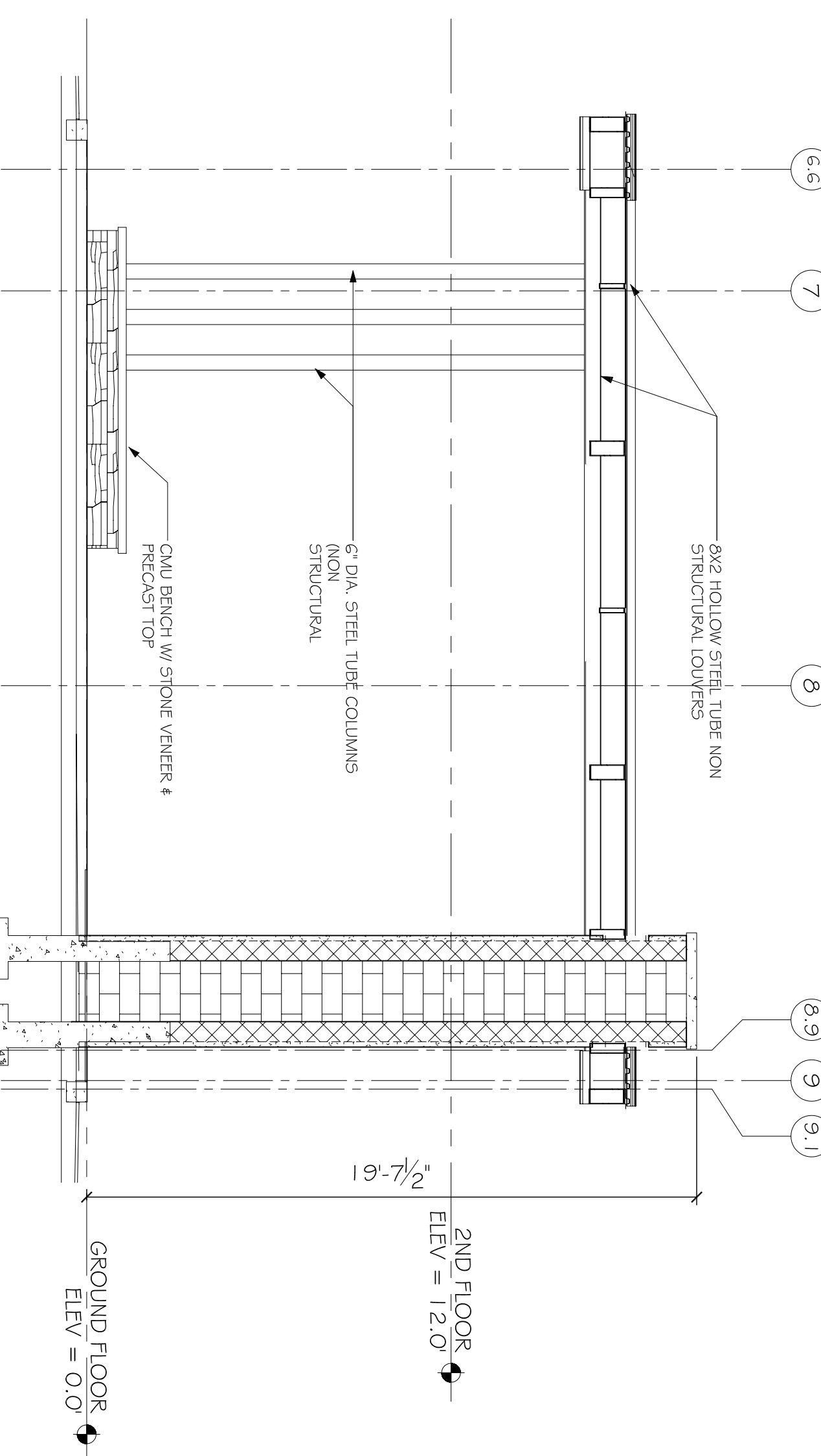
LAYOUT NOTES:
1. FINISH DIMENSIONS FOR ARCH SEGMENTS ARE TAKEN TO BOTTOM OF BEAM.
2. ORIENT ARCH SEGMENTS ON TANGENT WITH 1.5'-9" STRAIGHT SEGMENT.
3. MAKING CAD FILES AVAILABLE TO FABRICATOR IS HIGHLY RECOMMENDED.



Q PORTE COCHERE SECTION
SCALE: 1/4" = 1'-0"



P PORTE COCHERE CROSS-SECTION
SCALE: 1/4" = 1'-0"



N PORTE COCHERE CROSS-SECTION
SCALE: 1/4" = 1'-0"

PRELIMINARY (NOT FOR CONSTRUCTION)

PORTE COCHERE DETAILS
SHEET No: 00 OF 00
A13

REVISIONS	DATE
# DESCRIPTION	

FAIRFIELD INNS & SUITES	
619 PEEPS CENTRE DRIVE VICKERSBURG, MISSISSIPPI 39180	
JOB No: 2181	DATE: 08-01-2013
DRAWN BY: JTL	CHECKED BY: CKD

DAMMON ENGINEERING, INC.
Architects & Engineers

CHIEF ENGINEER: EMMETT DAMMON, P.E.
554 OLD SPANISH TRAIL
SLIDEL, LA 70458

dammonengineering.com
dammoneng@bellsouth.net
PHONE: 985-649-5832
FAX: 985-641-5990