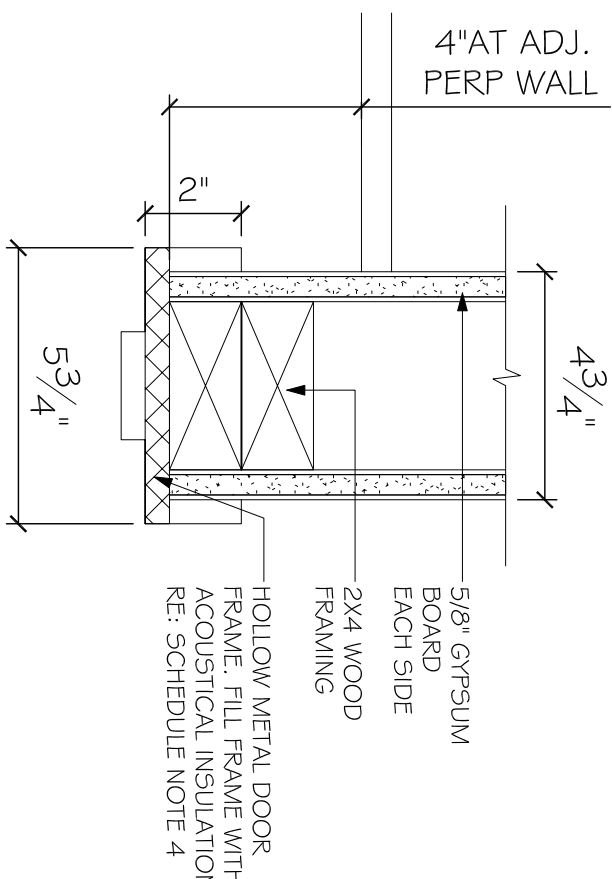


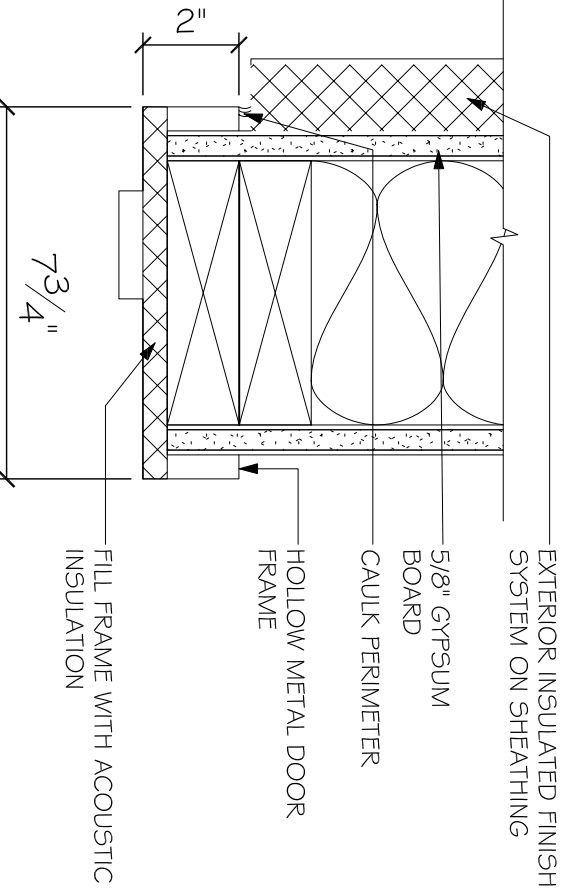
GENERAL NOTES

1. REFER TO INTERIOR FINISH INDEX FOR CURRENT FINISHES
2. VERIFY SIZES OF DOORS LEADING INTO ROOMS HOUSING E.I.5. SEE COVER SHEET FOR INFORMATION REGARDING THE INTENT AND LIMITATIONS OF THIS DOCUMENT. EQUIPMENT, SUCH AS MECHANICAL ROOMS, TO ENSURE DOOR IS WIDE ENOUGH TO ALLOW FOR REMOVAL/REPLACEMENT OF EQUIPMENT
3. VERIFY SIZES OF DOORS LEADING INTO ROOMS HOUSING EQUIPMENT, SUCH AS LAUNDRY ROOM, TO ENSURE DOOR IS WIDE ENOUGH TO ALLOW FOR REMOVAL/REPLACEMENT OF EQUIPMENT
4. METAL DOORS AND FRAMES TO BE PAINTED
5. WOOD DOORS AND FRAMES TO BE PREFINISHED OR PAINTED
6. HARDWARE SCHEDULE TO BE SUBMITTED TO THE LOCAL JURISDICTION FOR APPROVAL
7. NO THUMB LATCHES OR KEVED CYLINDER DEAD BOLTS ALLOWED ON ANY DOORS UNLESS OPERATED BY A SINGLE ACTION WITH A LEVER, EXCEPT AT GUESTROOM HVAC CLOSET DOORS
8. PROVIDE SAFETY GLAZING AT ALL GLAZING
9. DOOR HARDWARE TO BE CENTERED ON RAIL OF PANEL DOORS
10. HINGE-MOUNTED DOOR STOPS NOT ALLOWED
11. DOOR GUARDS AT THE UNIT ENTRY DOORS REQUIRE A SPACER TO CLEAR THE DOOR TRIM
12. CASING AROUND GUESTROOM DOOR FRAME TO BE "COLONIAL" STYLE. COLOR OF CASING IS TO MATCH THE FRAME
13. CASING AROUND GATEHOUSE DOOR FRAME TO MATCH WINDOW STYLE. COLOR OF CASING IS TO MATCH THE FRAME
14. DOOR E.I. IS PROVIDED IN LIEU OF AN ELEVATOR LOBBY WHERE ALLOWED BY CODE. WHERE CODE DOES NOT REQUIRE ELEVATOR LOBBY DOOR E.I. IS TO BE OMITTED
15. SEE COVER SHEET FOR INFORMATION REGARDING THE INTENT AND LIMITATIONS OF THIS DOCUMENT.

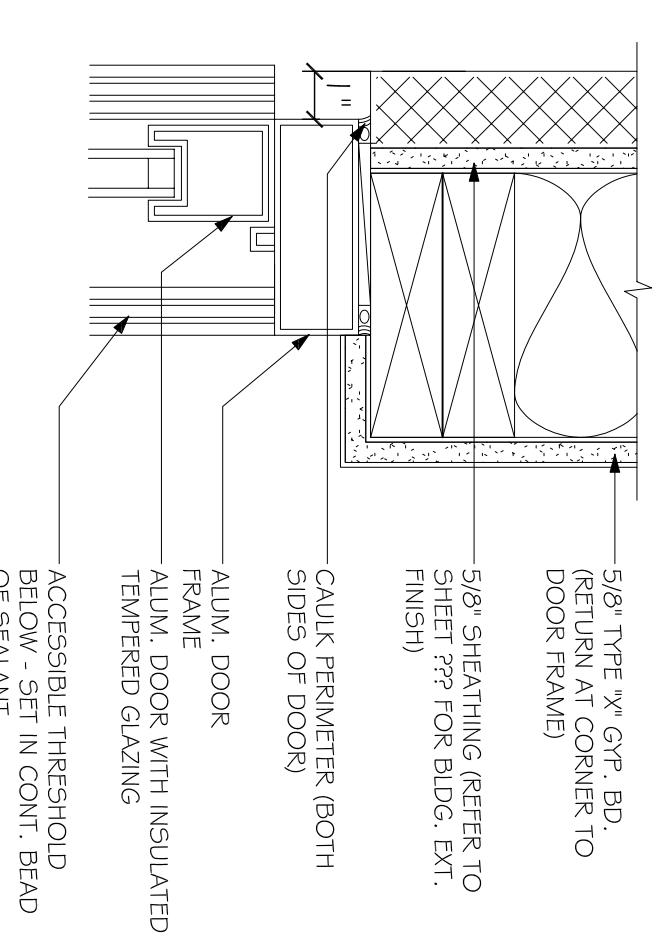
2 INTERIOR DOOR JAMB  
SCALE: 3"=1'-0"



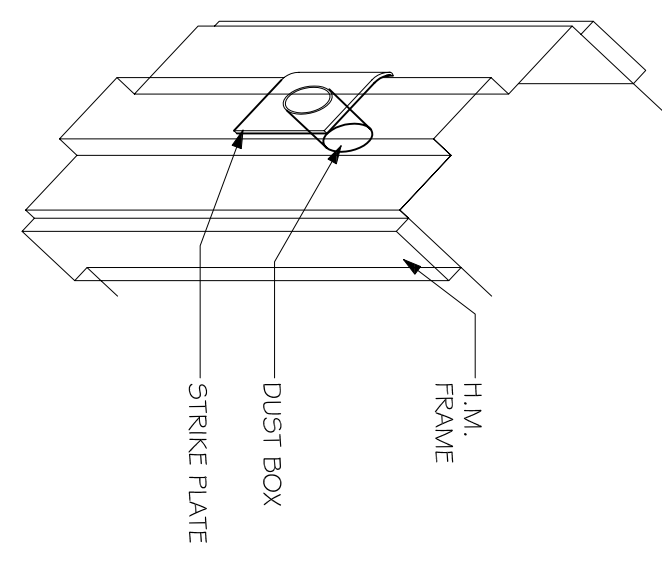
3 EXTERIOR DOOR HEAD  
SCALE: 3"=1'-0"



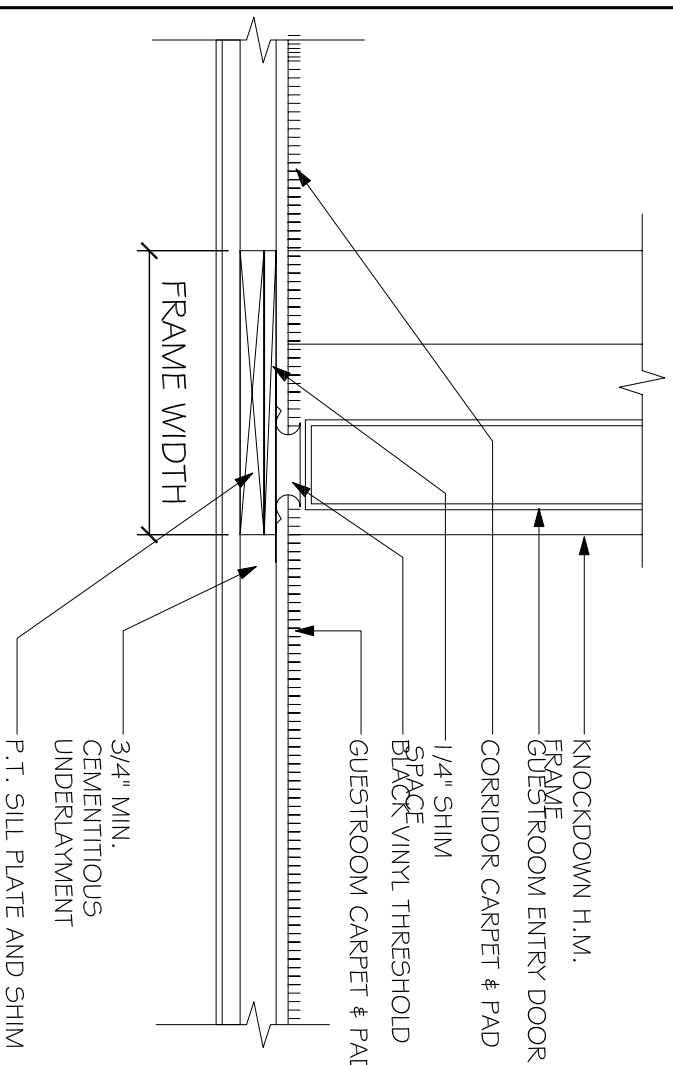
4 EXTERIOR DOOR JAMB  
SCALE: 3"=1'-0"



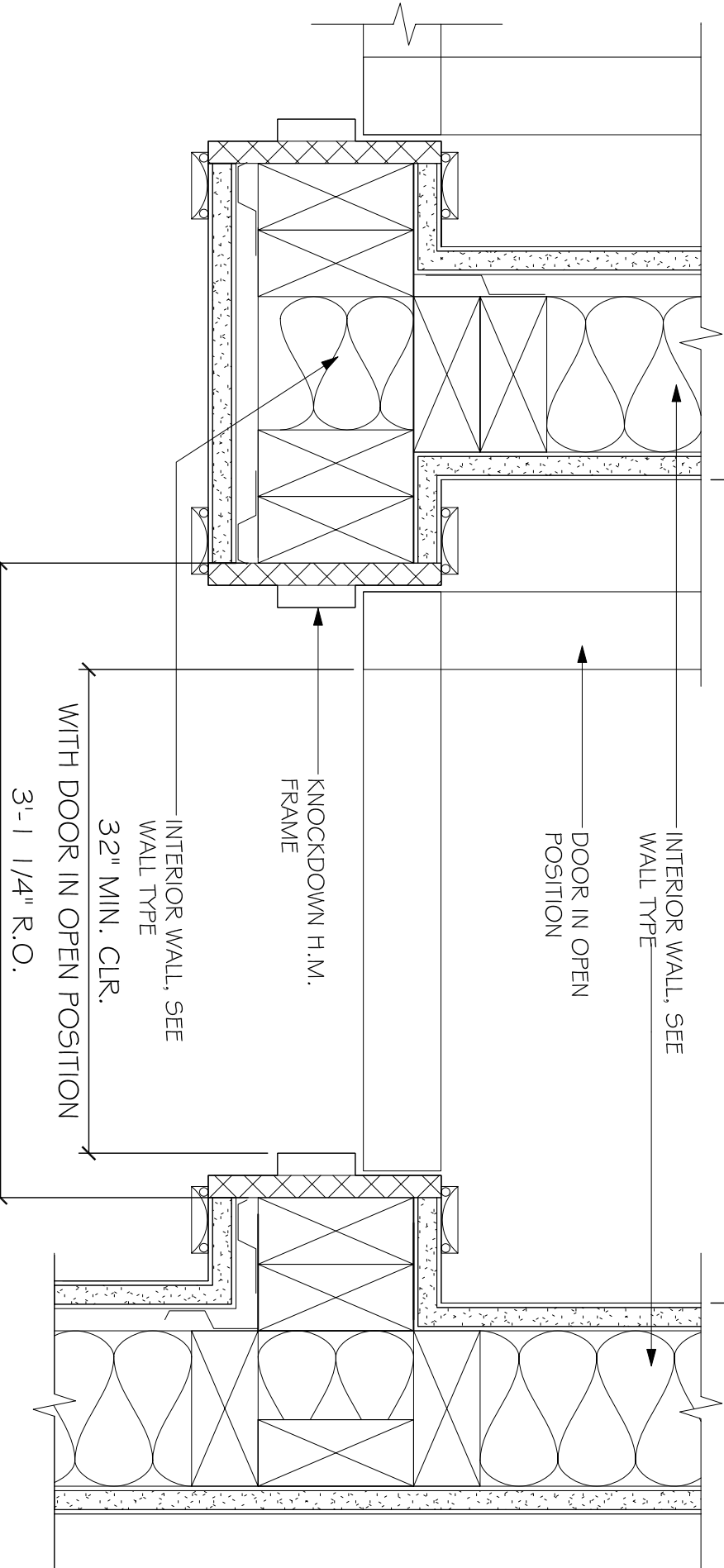
5 INTERIOR DOOR HATCH  
SCALE: 3"=1'-0"



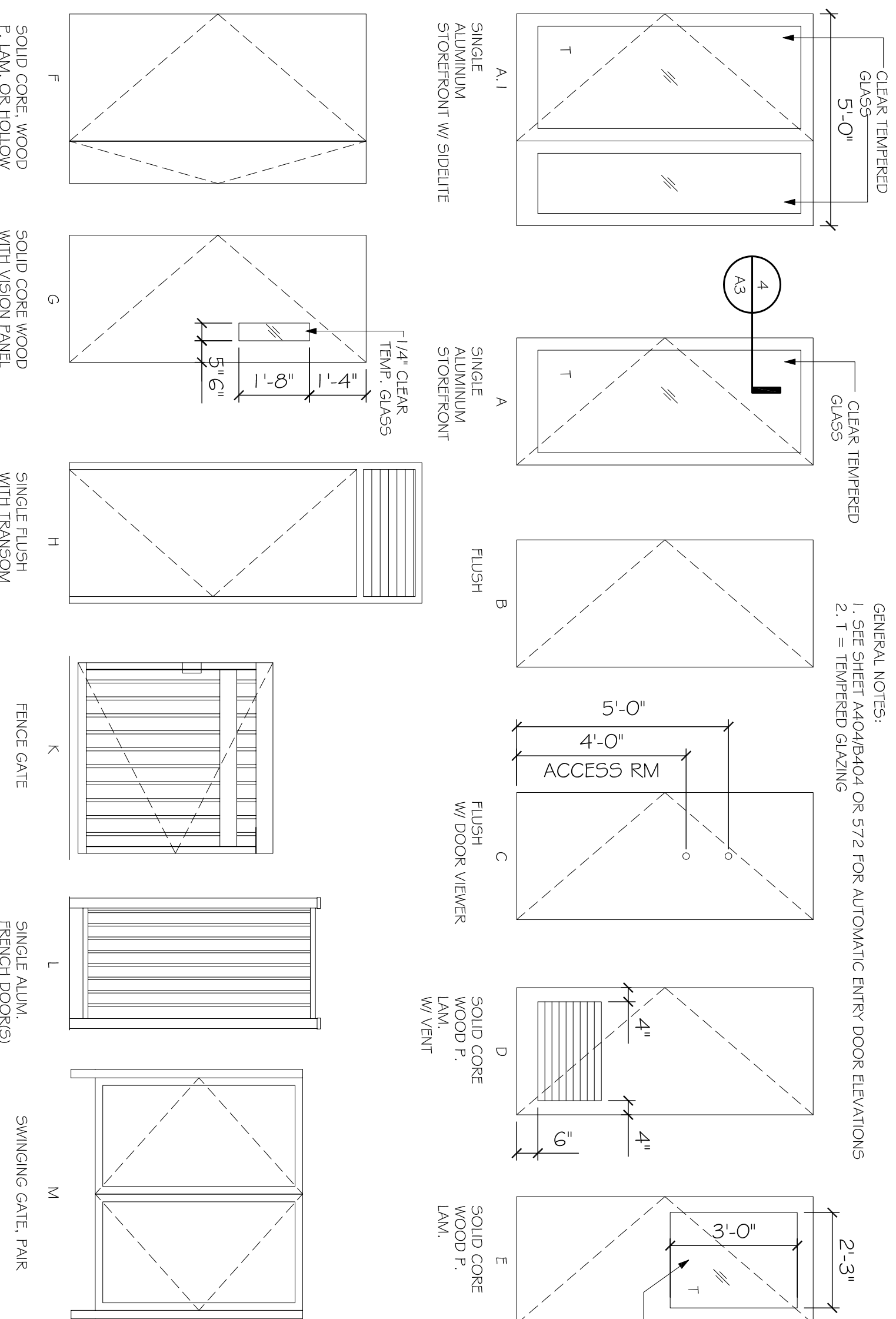
6 RESILIENT THRESHOLD & DOOR  
SCALE: 3"=1'-0"



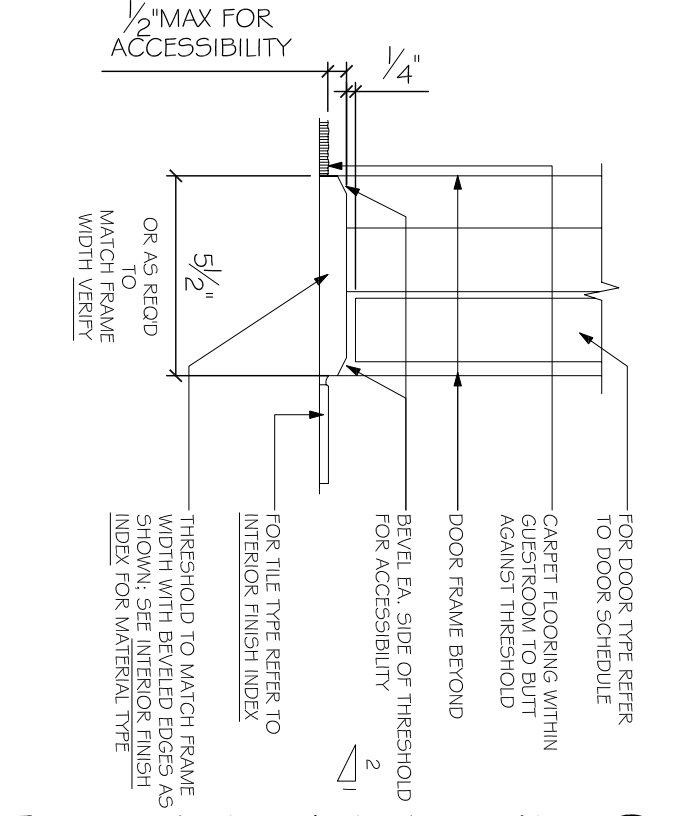
8 INTERIOR DOOR JAMB  
SCALE: 1-1/2"=1'-0"



9 DOOR TYPES  
SCALE: 3/8"=1'-0"



10 DOOR THRESHOLD  
SCALE: 3"=1'-0"



#	LOCATION	W	H	THK	ELEV	DOOR MAT.	DOOR FINISH	THRESHOLD	HDW	FRAME MAT	RATING	NOTES
01	GUESTROOMS											
01A	GUEST ENTRY	3'-0"	6'-8"	1 3/4"	C	SCWD	PLAM	TI 1B	HM		20	
01B	GUEST ENTRY ACCESSIBLE	3'-0"	6'-8"	1 3/4"	C	SCWD	PLAM	TI 1C	HM		20N	
02	GUEST BATH	3'-0"	6'-8"	1 3/4"	B	PLAM	TI 2C	T2E	HM		MIN	
03	ACCESSIBLE GUEST BATH	3'-0"	6'-8"	1 3/4"	B	SCWD	PLAM	TI 1F	HM		45	
04	COMMUNICATING DOOR	3'-0"	6'-8"	1 3/4"	B	SCWD	PLAM	TI 5	HM		45	
02	PUBLIC SPACE											
11	POOL PATIO VESTIBULE	3'-0"	8'-4"	1 3/4"	A.1	ALUM	CLR. ANOD	TI 5A	ALUM		MIN	
12	STORAGE / MAIN	3'-0"	6'-8"	1 3/4"	B	SCWD	PLD	TI 6B	HM		60	
13	INDOOR POOL VESTIBULE	3'-0"	8'-4"	1 3/4"	A.1	ALUM	CLR. ANOD	TI 20	ALUM		MIN	
15	GUEST LAUNDRY	3'-0"	6'-8"	1 3/4"	E	SCWD	PLD	T25B	HM		20	
16	MEN / WOMEN	3'-0"	6'-8"	1 3/4"	B	SCWD	PLD	MARBLE	T23A	HM	20N	
17	STORAGE UNREATED	2'-4"	6'-8"	1 3/4"	E	SCWD	PLD	TI 6B	HM		MIN	
18	EMPLOYEE BREAK ROOM	3'-0"	6'-8"	1 3/4"	B	SCWD	PLD	T28A	HM		MIN	
19	LAUNDRY (CORRIDOR)	4'-6"	6'-8"	1 3/4"	F	HM	PLD	T27B	HM		45	USE 3068 AND 2068 DOORS IF G WIDTH WILL NOT FIT
20	ELEVATOR EQUIPMENT	3'-0"	6'-8"	1 3/4"	B	HM	PLD	TI 8	HM		MIN	VERIFY REQUIRED DOOR WIDTH WITH ELEVATOR EQUIPMENT MANUFACTURER
22	LAUNDRY (WORK ROOM)	3'-0"	6'-8"	1 3/4"	B	SCWD	PLD	T26C	HM		MIN	
24	OFFICE	3'-0"	6'-8"	1 3/4"	B	SCWD	PLD	T30A	HM		MIN	
25	WORK AREA (WELCOME DESK)	3'-0"	6'-8"	1 3/4"	B	ALUM	CLR. ANOD	T28B	HM		MIN	
26	VESTIBULE (INTERIOR)	6'-0"	7'-5"	1 3/4"	J	ALUM	CLR. ANOD	TI 5C	ALUM		MIN	
27	FOOD PREP (BUFFET)	3'-0"	6'-8"	1 3/4"	G	SCWD	PLD	TI 9A	HM		MIN	TILE TRANSITION AT THRESHOLD; AUTOMATIC DOOR HDWR BY SUPPLIER
29	WATER	3'-0"	6'-8"	1 3/4"	B	HM	PLD	TI 1B	HM		MIN	DOUBLE ACTING DOOR W/ VINYL ACRYLIC CLADDING - REFER TO SPEC
31	IT CLOSET	2'-8"	6'-8"	1 3/4"	D	SCWD	PLD	TI 6B	HM		45	
32	ELECTRICAL CLOSET	3'-0"	6'-8"	1 3/4"	B	SCWD	PLD	TI 6B	HM		MIN	
35	MECHANICAL CLOSET	3'-0"	6'-8"	1 3/4"	B	HM	PLD	TI 6B	HM		MIN	
36	FOOD PREP (FROM CORRIDOR)	3'-0"	6'-8"	1 3/4"	B	SCWD	PLD	TI 1A	HM		MIN	
37	AREA SEPARATION	4'-10"	8'-2"	1 3/4"	F	SCWD	PLAM	TI 3A	HM		45	WHERE REQUIRED BY LOCAL JURISDICTION.
38	DRIVERS	2'-4"	6'-8"	1 3/4"	B	SCWD	PLD	TI 3	HM		MIN	
03	GUESTROOM CORRIDOR											
40	LINEN / ENG. / HOUSEKEEPING	3'-0"	6'-8"	1 3/4"	B	HM	PLD	TI 7A	HM		MIN	
42	ELECTRICAL CLOSET	3'-0"	6'-8"	1 3/4"	B	HM	PLD	TI 6B	HM		45	
43	TELEPHONE CLOSET	3'-0"	6'-8"	1 3/4"	D	SCWD	PLD	TI 6B	HM		MIN	
44	COMPUTER ROOM	3'-0"	6'-8"	1 3/4"	B	HM	PLD	TI 6B	HM		MIN	
45	STORAGE	3'-0"	6'-8"	1 3/4"	B	SCWD	PLD	TI 6B	HM		MIN	
04	STAR / ELEVATORS											
50	STAR (INTERIOR)	3'-0"	6'-8"	1 3/4"	G	SCWD	PLAM	TI 0A	HM		MIN	WALL MAGNETS TO BE TIED INTO FIRE ALARM SYSTEM
51	STAR (EXTERIOR)	3'-0"	6'-8"	1 3/4"	B	HM	PLD	TI 1A	HM		MIN	
05	EXTERIOR DOOR											
60	CORRIDOR TO EXTERIOR	3'-0"	7'-6"	1 3/4"	A.1	ALUM	CLR. ANOD	TI 2B	ALUM		MIN	FINISH TO MATCH TYP STOREFRONT
61	VESTIBULE (EXTERIOR)	6'-0"	7'-5"	1 3/4"	J	ALUM	CLR. ANOD	TI 5B	ALUM		MIN	FINISH TO MATCH TYP STOREFRONT
63	BUFFET TO EXTERIOR	3'-0"	7'-5"	1 3/4"	A	ALUM	CLR. ANOD	TI 2C	ALUM		MIN	FINISH TO MATCH TYP STOREFRONT
64	POOL SUPPORT	3'-0"	6'-8"	1 3/4"	B	HM	PLD	TI 2B	HM		MIN	GALVANIZED FRAME
68	POOL TO COURTYARD	3'-0"	7'-5"	1 3/4"	A	ALUM	CLR. ANOD	TI 5	ALUM		MIN	INDOOR POOL OPTION ONLY
06	MISCELLANEOUS											
70	PATIO GATE				K	ALUM		T39A	ALUM		MIN	OUTDOOR POOL OPTION ONLY. FINISH TO MATCH FENCE
71	TALL POOL GATE				L	ALUM		T39A	ALUM		MIN	OUTDOOR POOL OPTION ONLY. FINISH TO MATCH FENCE
72	ROOF TOP EQUIPMENT	5'-10"	5'-2"		M						MIN	OUTDOOR POOL OPTION ONLY. FINISH TO MATCH ENCLOSURE SPECIFY AS PART OF ENCLOSURE ASSEMBLY. FINISH TO MATCH ENCLOSURE
G 10 DOOR SCHED (DESIGN OPTIONS)												
02	PUBLIC SPACE	3'-0"	7'-4 3/4"	1 3/4"	A	ALUM		T20B	ALUM		MIN	MEETING ROOM OPTION ONLY
03	MEETING ROOM	3'-0"	7'-4 3/4"	1 3/4"	A	ALUM		T20B	ALUM		MIN	MEETING ROOM OPTION ONLY
05	EXTERIOR DOOR	3'-2"	7'-2"	1 3/8"	H	HM		TI 2B	HM		MIN	INDOOR POOL OPTION ONLY-INCLUDE LOUVERED TRANSOM WITH FRAME
66	EXTERIOR DOOR TO MECHANICAL	3'-2"	7'-2"	1 3/8"	H	HM		TI 2B	HM		MIN	INDOOR POOL OPTION ONLY
68	POOL TO COURTYARD	3'-0"	7'-4 3/4"	1 3/4"	A	ALUM		TI 5	ALUM		MIN	INDOOR POOL OPTION ONLY

PRELIMINARY (NOT FOR CONSTRUCTION)

REVISIONS

#	DESCRIPTION	DATE

DOOR SCHEDULE AND DETAILS

SHEET No: 00 OF 00

A3

FAIRFIELD INNS & SUITES

019266 CENTRE DRIVE  
VICKSBURG, MISSISSIPPI 39180

JOB No: 2181 DATE: 08-01-2013

DRAWN BY: JTL CHECKED BY: CKD

DAMMON ENGINEERING, INC.

Architects & Engineers

CHIEF ENGINEER: EMMETT DAMMON, P.E.  
554 OLD SPANISH TRAIL  
SLIDEL, LA 70456

dammoneengineering.com  
dammoneing@bellsouth.net  
PHONE: 985-649-5832  
FAX: 985-641-5950