

FIG. 4
INSTALL FLASHING PAPER PIECE 'D' AT JAMBS. ATTACH AT EDGE OF FLASHING PAPER AT HEAD OF SILL AND FLASHING PAPER WITH 'D' AT OPENING.

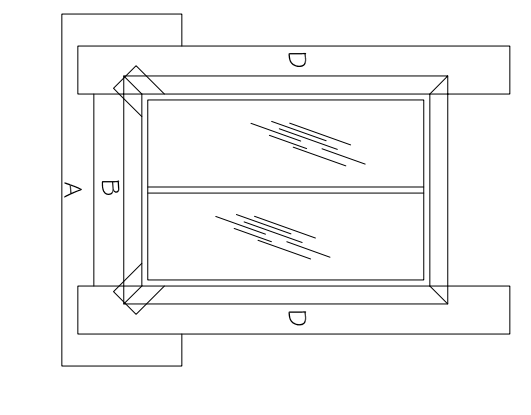


FIG. 5
SET WINDOW MAILING FLANGE INTO SILL AND FASTEN TO STRUCTURE.

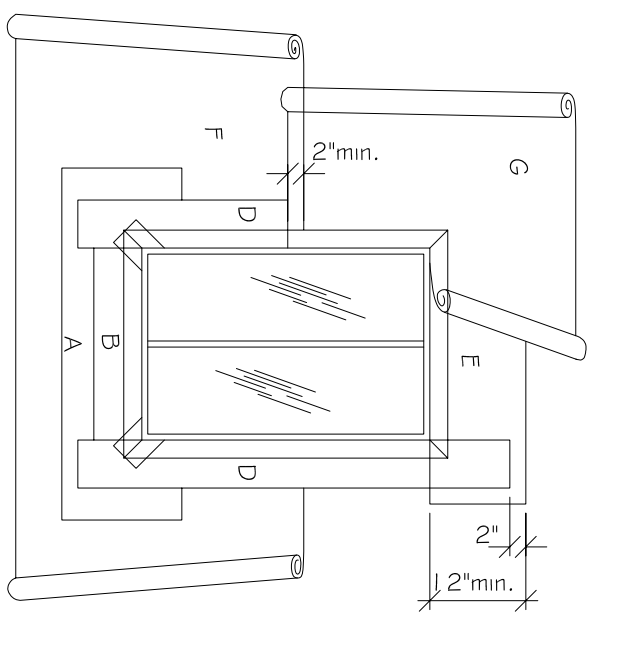


FIG. 6
INSTALL DRIP FLASHING PIECE (NOT SHOWN) ACROSS TOP OF FRAME. APPLY FLASHING PAPER 'E' AT HEAD. OVERLAPPING DRIP FLASHING AND JAMB PIECES. WEATHER BARRIER MATERIAL SHOULD EXTEND BEYOND FLASHING PAPER 'E' TO THE SILL. FLASHING PAPER 'F' UNDERLAYS THE SILL PIECE 'C'. 'F' SHOULD OVERLAP PIECE 'F' BY AT LEAST 2".

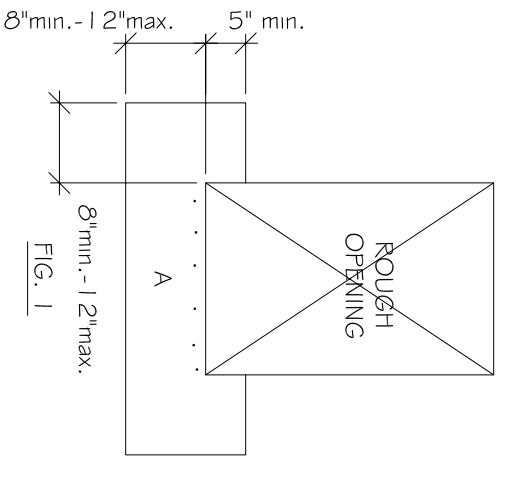


FIG. 1
INSTALL FLASHING PAPER SILL PIECE 'A'. FIRST, ATTACH AT EDGE OF OPENING ONLY.

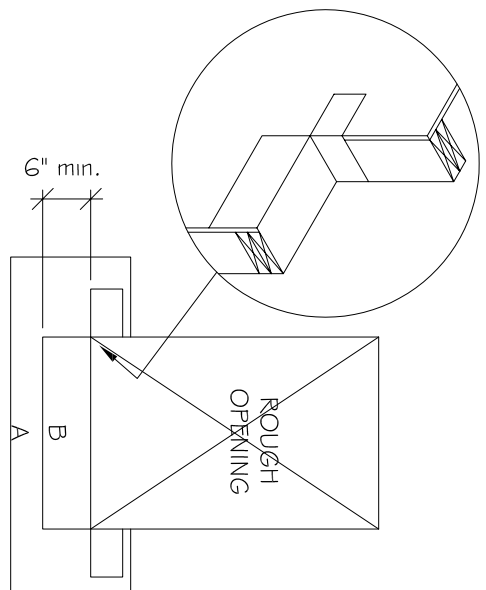


FIG. 2
INSTALL SILL FLASHING PIECE 'B'. EXTEND SILL FLASHING UP JAMB 4" MIN.

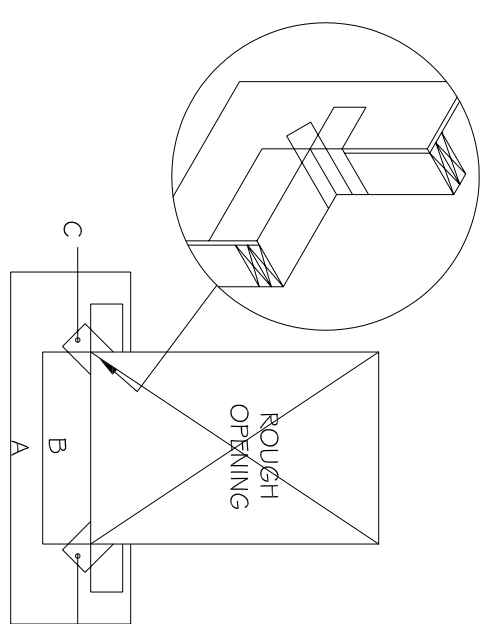
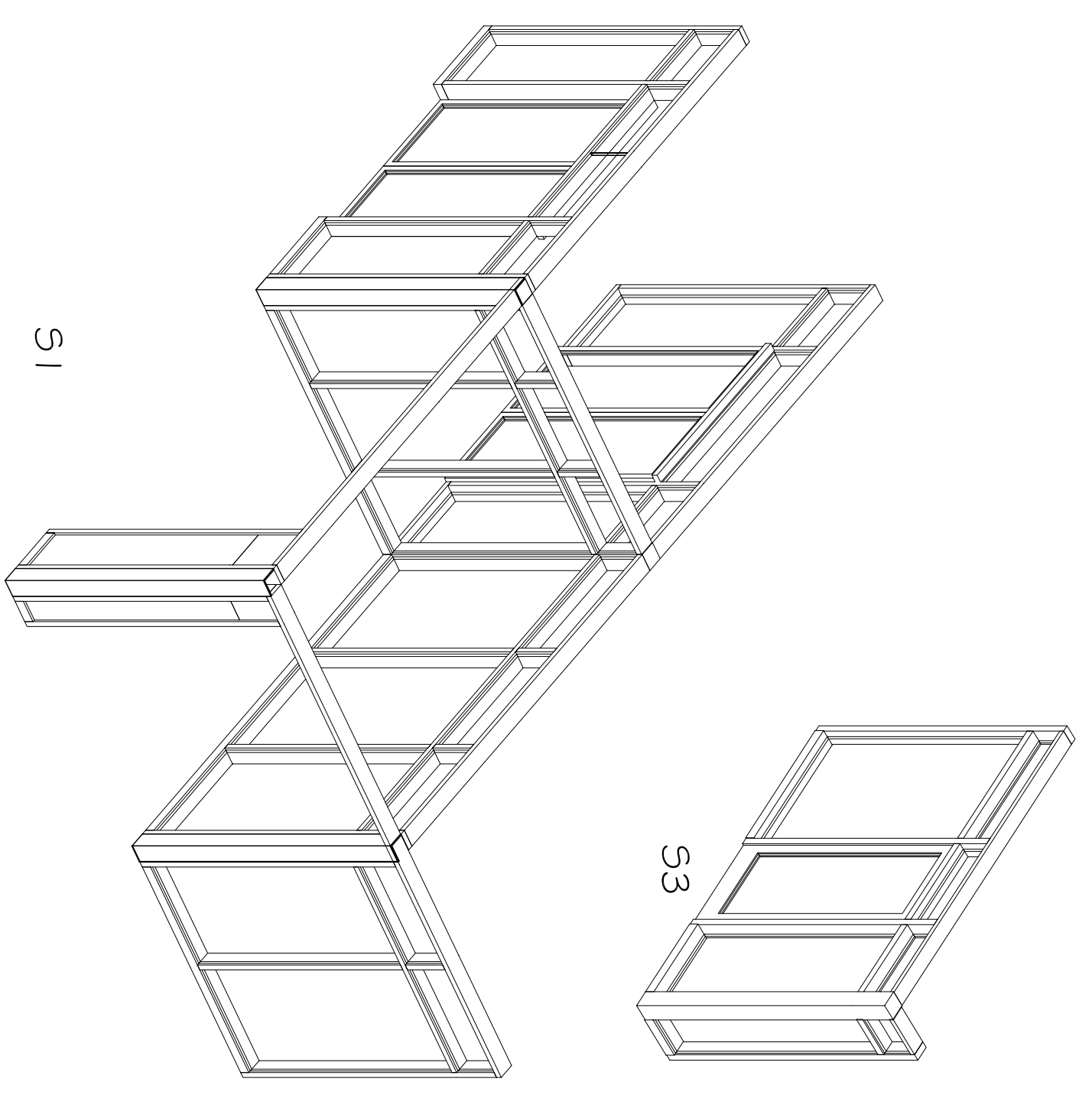
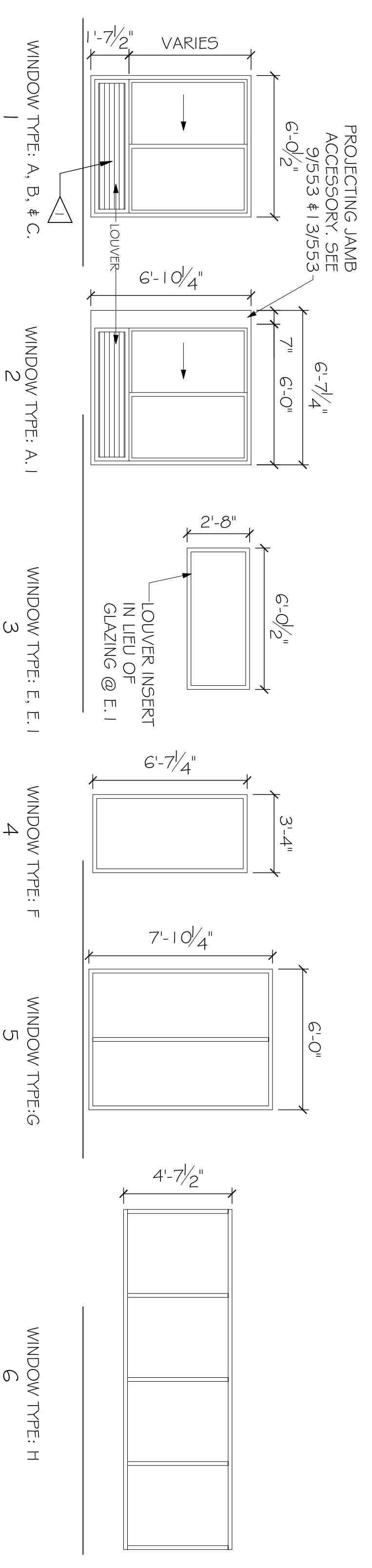


FIG. 3
INSTALL 4" WIDE BUTTERFLY FLASHING PIECE 'C' AT LOWER CORNERS OF SILL. EXTEND FLASHING SURFACE OF THE OPENING. OVER THE SILL FLASHING, THEN FOLDED OVER THE EXTERIOR SURFACES OF THE SILL FLASHING AND PRESSED INTO PLACE DRIP FLASHING. PER SPECIFICATIONS.

1 WATERPROOFING DETAILS
SCALE: 1/2" = 1'-0"

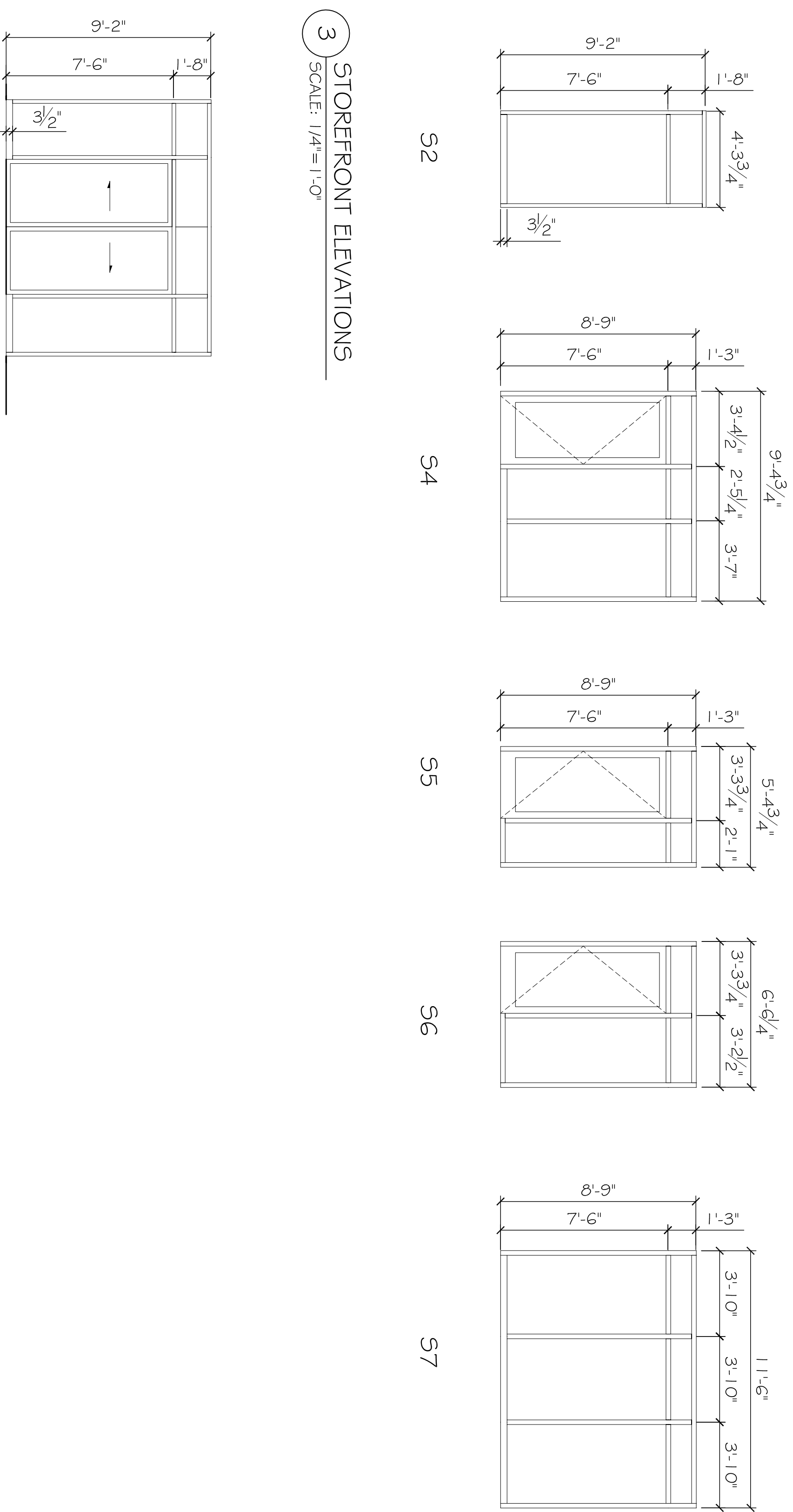


2 WINDOW ELEVATIONS
SCALE: 1/4" = 1'-0"

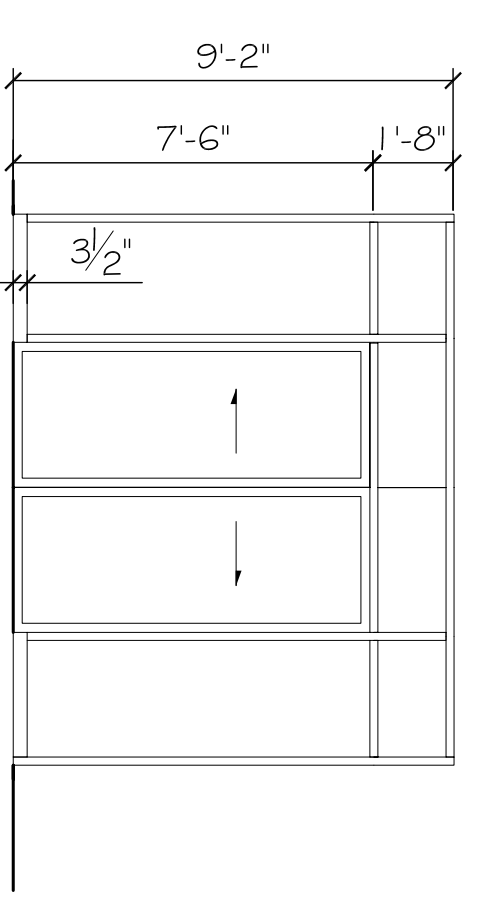


TYPE	DESCRIPTION	LOCATION	SCHEDULE	W	H	ELEVATION	FRAME MATERIAL	WINDOW NOTES
A	HORIZONTAL SLIDER	TYPICAL FLOOR GUESTROOM	6-0"	6-10"	1	ALUM / PVB	OPEN AWAY FROM FRAME. COORDINATE WITH PARTNERS. PROVIDE BLANK PANEL FOR FRAME.	
A.1	HORIZONTAL SLIDER	CENTER BAY ACCENT WINDOWS	6-0"	6-10"	2	ALUM / PVB	OPEN AWAY FROM FRAME. COORDINATE WITH PARTNERS. PROVIDE BLANK PANEL FOR FRAME.	
B	HORIZONTAL SLIDER	TYPICAL FIRST FLOOR GUESTROOM	6-0"	6-0"	1	ALUM / PVB	OPEN AWAY FROM FRAME. COORDINATE WITH PARTNERS. PROVIDE BLANK PANEL FOR FRAME.	
C	HORIZONTAL SLIDER	TYPICAL GUESTROOM (AT RAINSCREEN)	6-0"	6-10"	1	ALUM / PVB	OPEN AWAY FROM FRAME. COORDINATE WITH PARTNERS. PROVIDE BLANK PANEL FOR FRAME.	
D	HORIZONTAL SLIDER	OFFICE (AT RAINSCREEN)	6-0"	6-0"	1	ALUM / PVB	OPEN AWAY FROM FRAME. COORDINATE WITH PARTNERS. PROVIDE BLANK PANEL FOR FRAME.	
E.1	FIXED / LOUVER	LAUNDRY	6-0"	2-8"	3	ALUM / PVB	VENT WITH ALUM. FRAME TO MATCH OTHER WINDOWS.	
F	FIXED	CORRIDOR ENDS	3-4"	6-7"	4	ALUM / PVB	VENT WITH ALUM. FRAME TO MATCH OTHER WINDOWS.	
G	FIXED	EXERCISE ROOM	6-0"	7-10"	5	ALUM / PVB	VENT WITH ALUM. FRAME TO MATCH OTHER WINDOWS.	
H	FIXED	BREAKFAST AREA	14-6"	4-8"	6	ALUM / PVB	VENT WITH ALUM. FRAME TO MATCH OTHER WINDOWS.	

3 STOREFRONT ELEVATIONS
SCALE: 1/4" = 1'-0"



4 VESTIBULE STOREFRONT & DOOR TYPE J
SCALE: 1/4" = 1'-0"



REFERENCE NOTES

- PROVIDE MECHANICALLY FASTENED TAMPER PROOF 4" MAX. OPENING LIMITING DEVICES AT ALL OPERABLE WINDOWS.
- SEE BUILDING ELEVATION FOR SILL HEIGHTS. COORDINATE WINDOW SILL HEIGHTS WITH REVEAL LOCATIONS.

CRITERIA NOTES

FINISH LOUVERS TO MATCH WINDOW FRAME.

PRELIMINARY (NOT FOR CONSTRUCTION)

WINDOW SCHEDULE AND DETAILS SHEET No: 00 OF 00 A4	REVISIONS # DESCRIPTION DATE	FAIRFIELD INNS & SUITES 01 PREEPS CENTRE DRIVE VICKERSBURG, MISSISSIPPI 39180	JOB No: 2181 DATE: 08-01-2013 DRAWN BY: JTL CHECKED BY: CKD	The above drawings and specifications, designs and materials represented hereby are and shall remain the property of Dammon Engineering, and no part thereof shall be copied, altered or reproduced in connection with any work or project other than the specific project for which they were prepared and developed without written consent of Dammon Engineering. Your contact with these drawings or specifications shall constitute conclusive evidence of acceptance of these restrictions.	DAMMON ENGINEERING, INC. Architects & Engineers CHIEF ENGINEER: EMMETT DAMMON, P.E. 554 OLD SPANISH TRAIL SLIDELL, LA 70458 dammonengineering.com dammoneng@bellsouth.net PHONE: 985-649-5832 FAX: 985-641-5990
--	---------------------------------	--	--	---	--