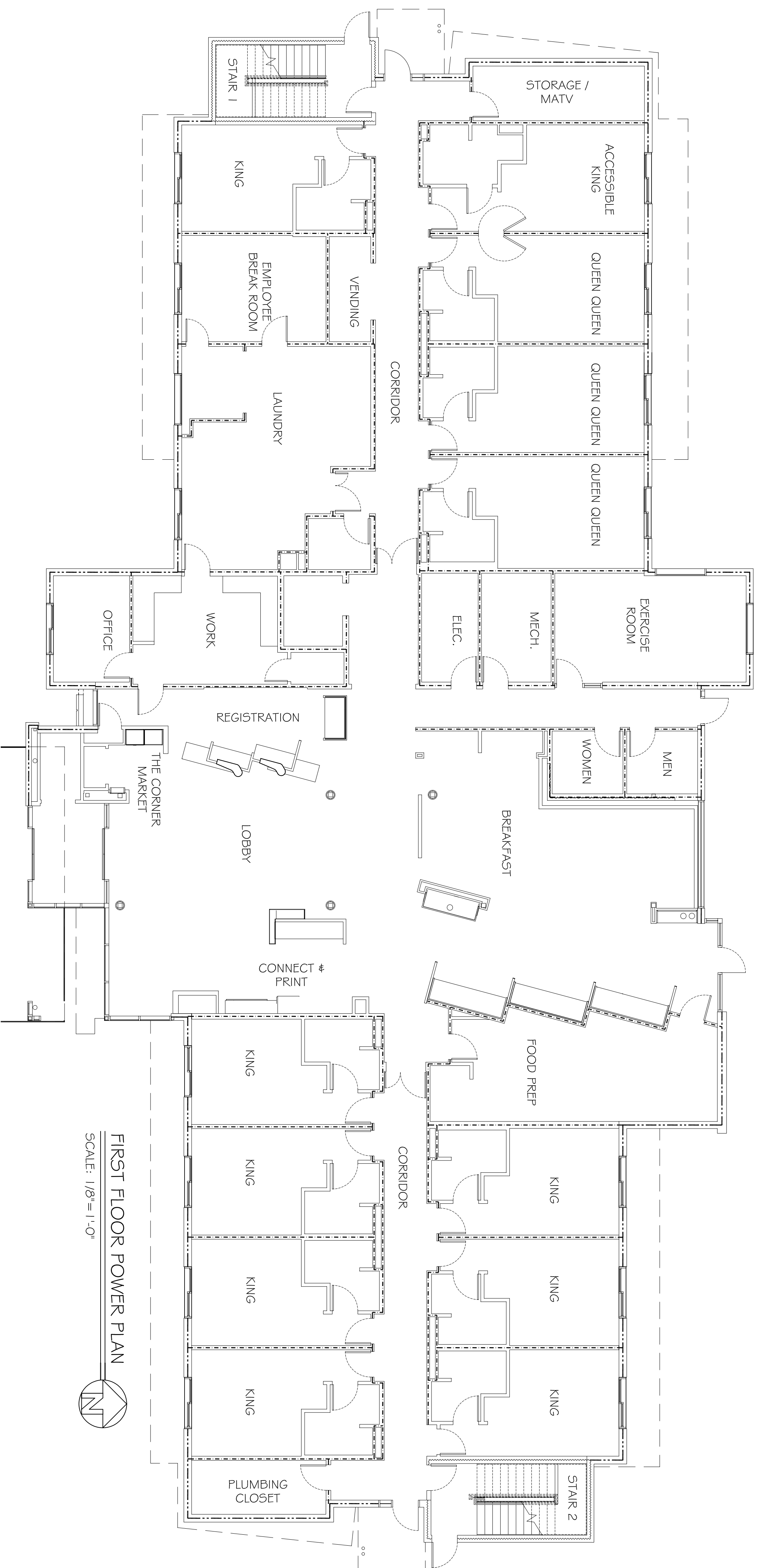
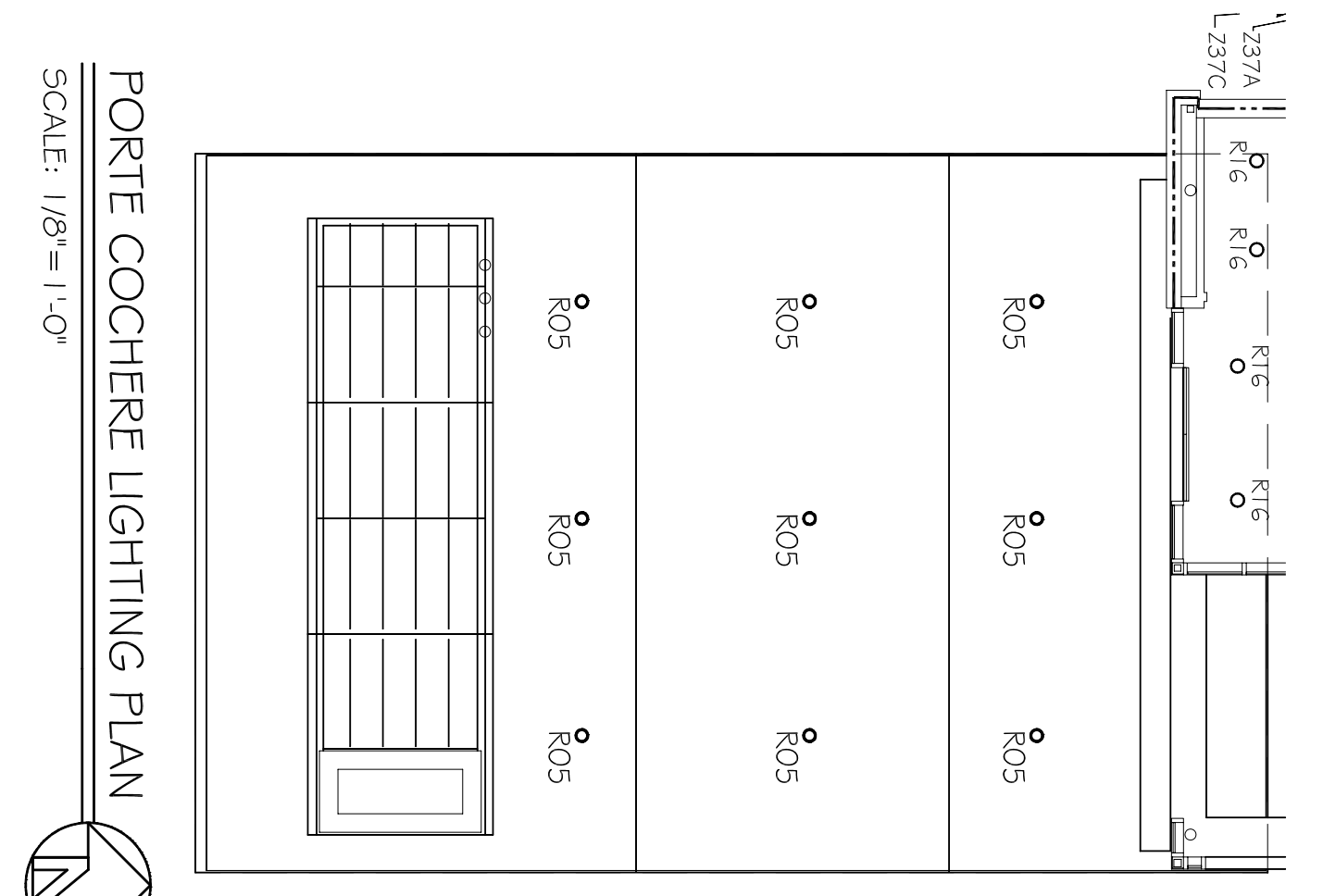


FIRST FLOOR LIGHTING PLAN
SCALE: 1/8" = 1'-0"



FIRST FLOOR POWER PLAN
SCALE: 1/8" = 1'-0"



PORTE COCHERE LIGHTING PLAN
SCALE: 1/8" = 1'-0"

- LEGEND**
- - - 1 HOUR RATED INTERIOR WALL
SEE UL# U333- SHEET A-2
 - ===== 1 HOUR RATED EXTERIOR WALL
SEE UL# U356- SHEET A-2
 - ===== 2 HOUR RATED EXTERIOR WALL
SEE UL# U301- SHEET A-2
 - FE - FIRE EXTINGUISHER
- NOTE:**
FIRE FABRICATED ROOF, FLOOR, WALLS,
BEAMS AND COLUMNS PROVIDED BY OTHERS.

- ELECTRICAL NOTES**
1. ALL WORK SHALL CONFORM TO THE LATEST EDITION OF THE NATIONAL ELECTRICAL CODE, THE GOVERNING JURISDICTION, OBTAIN CERTIFICATES OF INSPECTION DEPARTMENTS HAVING JURISDICTION. OBTAIN CERTIFICATES OR APPROVAL WHERE REQUIRED.
 2. ALL MATERIALS FURNISHED SHALL BE NEW AND SHALL BE U.L. LISTED. DIMENSIONS SHALL NOT BE USED. THE EXACT LOCATION OF WORK, SCALD OF ALL LIGHTING FIXTURES, RECEPTACLES AND TELEPHONE OUTLETS, ETC. SHALL BE DETERMINED BY ACTUAL CONDITIONS IN THE FIELD.
 3. PRIOR TO BIDDING, CONTRACTOR SHALL VISIT THE JOB SITE AND FAMILIARIZE THEMSELVES WITH THE EXISTING CONDITIONS. ELECTRICAL CONTRACTOR SHALL COORDINATE HIS WORK WITH OTHER TRADES AND WITH OTHER CONTRACTORS WHOSE WORK MAY AFFECT THIS INSTALLATION.
 4. ELECTRICAL CONTRACTOR SHALL COORDINATE INCOMING ELECTRICAL SERVICE WITH UTILITY COMPANY AND INCLUDE IN HIS BID ALL CHARGES AND FEES INCURRED IN MODIFICATIONS.
 5. WHERE MORE THAN ONE SWITCH OCCURS IN THE SAME LOCATION, THEY SHALL BE INSTALLED IN A GANG TYPE BOX UNDER ONE COVER PLATE.
 6. ELECTRICAL CONTRACTOR SHALL COORDINATE THE TELEPHONE INSTALLATION WITH THE TELEPHONE COMPANY AND THE GENERAL CONTRACTOR.
 7. ELECTRICAL CONTRACTOR, BEFORE INSTALLING ANY OF THE WORK, SHALL SEE THAT IT DOES NOT INTERFERE WITH CLEARANCES REQUIRED FOR FINISHED COLUMNS, HUNG CEILING, PASTER, PARTITIONS, WALLS, ETC. AS SHOWN IN THE ARCHITECTURAL DRAWINGS AND DETAILS. IF ANY WORK IS INSTALLED AND IT LATER DEVELOPS THAT SUCH DETAILS OR DESIGN CANNOT BE FOLLOWED, THE CONTRACTOR, AT HIS OWN EXPENSE, SHALL MAKE SUCH CHANGES IN THE WORK AS DIRECTED BY THE ARCHITECT, AS WELL AS TO PERMIT THE INSTALLATION OF THE ARCHITECTURAL WORK AS SHOWN ON THE PLANS AND DETAILS.
 8. PERFORM TEST REQUIRED BY THE OWNER OR THE ENGINEER IN CONNECTION WITH THE OPERATION OF THE ELECTRICAL SYSTEM IN THE BUILDING.
 9. ALL TESTS SHALL BE MADE IN ACCORDANCE WITH THE LATEST STANDARD OF THE IEEE AND THE NATIONAL ELECTRIC CODE.
 10. MINIMUM CONDUCTOR SIZE SHALL BE #12, 600V INSULATION. MINIMUM SIZE CONDUIT SHALL BE 3/4" EMT FOR INTERIOR USE, AND 3/4" RIGID ALUMINUM FOR EXTERIOR USE. USE TYPE NMC CABLE COPPER, FOR LIGHTS AND RECEPTACLE CIRCUITS. EXTERIOR FITTINGS SHALL BE CAST BOXES AND COVERS. INTERIOR FITTINGS SHALL BE CAST WHERE EXPOSED ON WALLS, STAMPED BOXES MAY BE USED ABOVE CEILING IN AIR CONDITIONED SPACES, WHERE LAY-IN FITURES ARE IN USE, USE 1/4" ALLOWED FOR 6" WIDTH.
 11. CONTRACTOR SHALL INSTALL WIRING AND OTHER CIRCUIT COMPONENTS TO MATCH EQUIPMENT ACTUALLY INSTALLED.
 12. INSTALL GROUND FAULT RECEPTACLES AT RECEPTACLE LOCATIONS WITHIN 5' OF SINKS OR LAVATORIES, AND AT EXTERIOR LOCATIONS. EXTERIOR RECEPTACLES SHALL ALSO BE WATERPROOF.
 13. BONDING AND GROUNDING SHALL BE IN ACCORDANCE WITH NFPA 70:230-63, NFPA 250-23, 250-71, & 250-72.
 14. GROUND NEUTRAL IN ACCORDANCE WITH NFPA 70:250-23b.
 15. FUSES SHALL BE TT CLASS K5, 250 VOLT, 200,000 AMP INTERRUPTING CAP.
 16. PROVIDE SERVICES OF A FIRE/SMOKE DETECTION AND ALARM COMPANY TO DESIGN AND INSTALL ALARM SYSTEM TO MEET REQUIREMENTS OF THE STATE FIRE MARSHALL.
 17. EXTERIOR LIGHTING SHALL BE SHADED OR INWARDLY DIRECTED IN SUCH A MANNER SO THAT NO DIRECT LIGHTING OR GLARE IS CAST BEYOND THE PROPERTY LINE. THE INTENSITY OF SUCH LIGHTING SHALL NOT EXCEED ONE FOOT CANDLE AS MEASURED AT THE ADJUTING PROPERTY LINE.
 18. ALL ELECTRICAL, MECHANICAL, AND PLUMBING PENETRATING FIRE PARTITIONS SHALL BE FIRE CAULKED. (PENETRATIONS THROUGH RATED CONSTRUCTION SHALL BE SEALED WITH A MATERIAL CAPABLE OF PREVENTING THE PASSAGE OF FLAMES AND HOT GASES WHEN TESTED IN ACCORDANCE WITH ASTM-E814.

PRELIMINARY (NOT FOR CONSTRUCTION)

REVISIONS	DATE
# DESCRIPTION	

FAIRFIELD INNS & SUITES	
01 PREEP CENTRE DRIVE VICKERSBURG, MISSISSIPPI 39180	
JOB No: 2181	DATE: 08-01-2013
DRAWN BY: JTL	CHECKED BY: CKD

DAMMON
ENGINEERING, INC.
Architects & Engineers

CHIEF ENGINEER, EMMETT DAMMON, P.E.
554 OLD SPANISH TRAIL
SLIDEL, LA 70456

dammonengineering.com
dammoneng@bellsouth.net
PHONE: 985-649-5832
FAX: 985-641-5990