

**PLANNING
INFORMATION**

BUILDING SQUARE FOOTAGE =

LEVEL 1	12,293
LEVEL 2	12,683
LEVEL 3	12,683
LEVEL 4	12,683
TOTAL SF	50,342 SF TOTAL

LOBBY BREAKDOWN:

DOUBLE QUEENS	1
DOUBLE QUEEN-ACC	1
DOUBLE QUEEN-ACC W/1.5	1
EXTENDED KING SUITES	4
TOTAL GUESTROOMS	19

2ND, 3RD, & 4TH LEVELS (PER LEVEL):

DOUBLE QUEEN-ACC	19
DOUBLE QUEEN-ACC	1
EXTENDED KING SUITES	7
TOTAL GUESTROOMS	27

LEVEL 1 = 14 GUESTROOMS + 81 (Q13) LEVEL 2, 3, & 4 = 100 TOTAL ROOMS

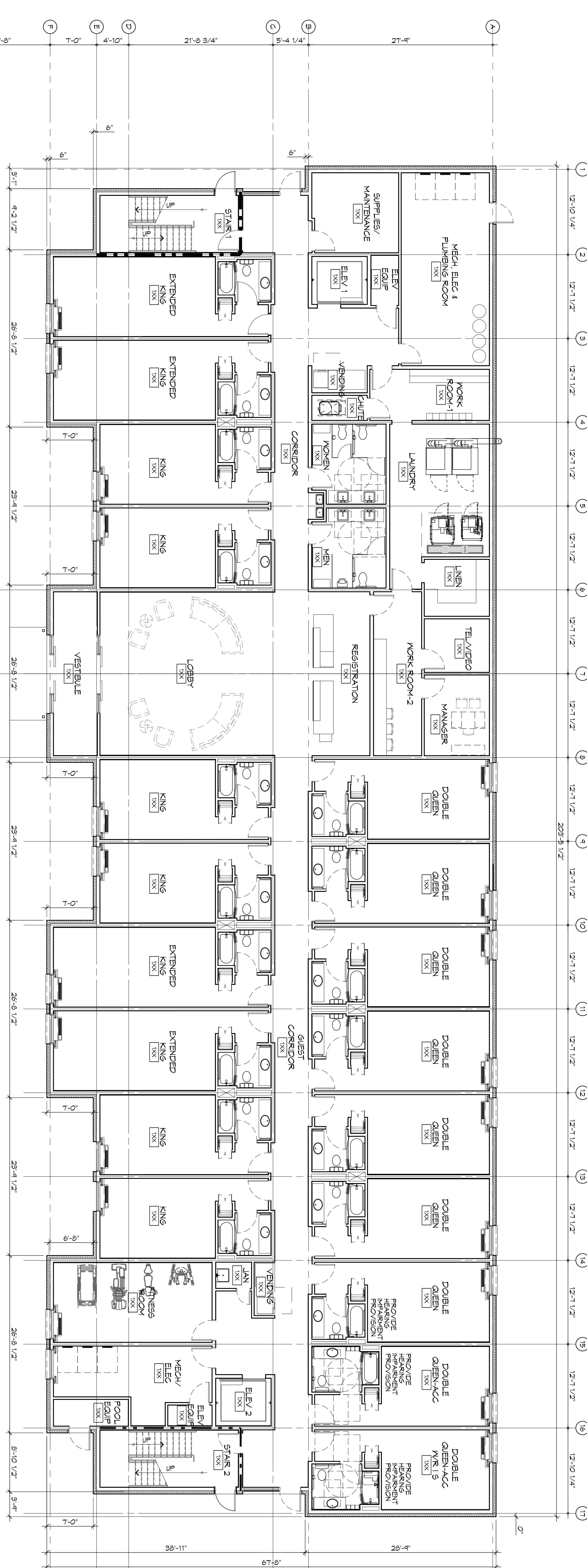
TOTAL DOUBLE QUEEN SUITES	46
TOTAL DOUBLE QUEEN ACC	1
TOTAL DOUBLE QUEEN ACC W/1.5	1
TOTAL EXTENDED KING SUITES	22
TOTAL KING SUITES	22
TOTAL ROOMS	100

TOTAL HANDICAP ACCESSIBLE = 5

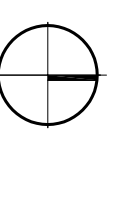
TOTAL PASSENGER HEARING = 4

TOTAL PASSENGER VISION = 4

SEE PLANS



ARCHITECTURAL FLOOR PLAN - LEVEL 1



SCALE: 1/8" = 1'-0"

DAMMON ENGINEERING, INC.
Architects & Engineers

Chief Architect: Kevin J. Kinchen, NCARB
Chief Engineer: Brian Mistich, PE
554 Old Spanish Trail
Stidell, LA 70458

www.dammoneengineering.com
info@dammoneengineering.com
PH: 985.649.5832
F: 985.641.5950

#	DESCRIPTION	DATE

**PRELIMINARY
NOT FOR
CONSTRUCTION**

**NEW HOTEL & RESTAURANT FOR
S - N A Z O L O J**

LOT #1 LA HWY 27
HACKBERRY, LA 70645

JOB No: 2141 DATE: 05-06-15

DRAWN BY: CKD/JTL CHECKED BY: CKD

SHEET TITLE:
ARCHITECTURAL FLOOR
PLAN - LEVEL 1

DRAWING NUMBER:

A101

SHEET No: 02 OF 5