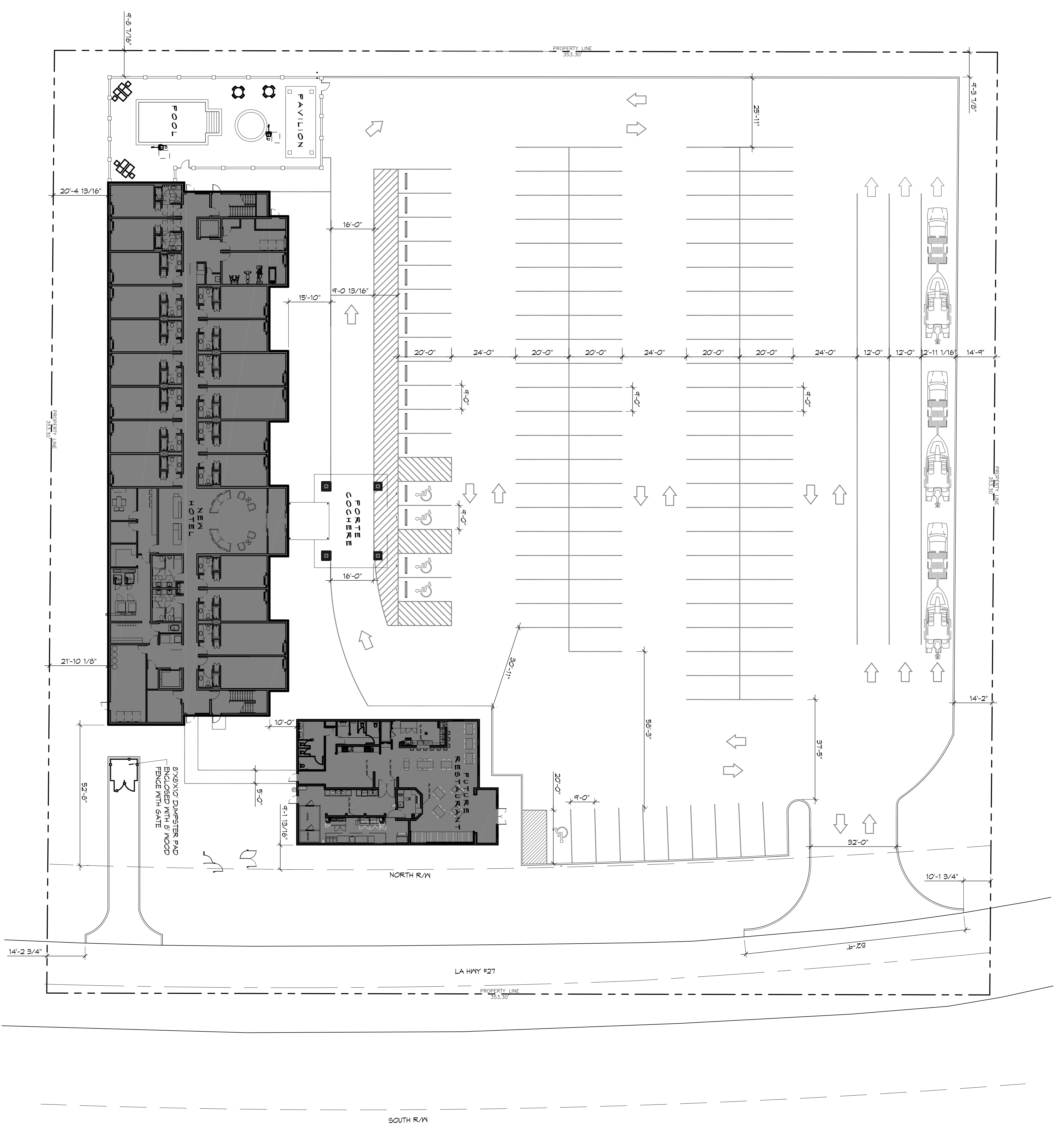


# 1 SITE PLAN

SCALE: 1" = 20'



## PARKING STATISTICS

- PARKING REQUIREMENTS**
- GUEST ROOM COUNT
  - 100 ROOMS
  - PARKING COUNT REQUIREMENT
  - 1 PARKING SPACE PER GUEST ROOM
  - MINIMUM REQUIRED PARKING SPACE COUNT
  - 100 SPACES
  - PARKING SPACES PROVIDED
  - 113 SPACES (INCLUDING ACCESSIBLE SPACES)
- ACCESSIBILITY REQUIREMENTS**
- PER 2010 ADA STANDARDS FOR ACCESSIBLE DESIGN TABLE 208.2 GUEST ROOMS WITH MOBILITY FEATURES
  - SPACES PROVIDED
  - ACCESSIBLE PARKING SPACES
  - 01 - 130

# DAMMON ENGINEERING, INC.

Architects & Engineers

Chief Architect: Kevin J. Kinchen, NCARB  
 Chief Engineer: Brian Mistich, PE  
 554 Old Spanish Trail  
 Slidell, LA 70458

www.dammonengineering.com  
 info@dammonengineering.com  
 PH: 985.649.5832  
 F: 985.641.5950

REVISIONS		DATE
#	DESCRIPTION	

**PRELIMINARY NOT FOR CONSTRUCTION**

**NEW HOTEL & RESTAURANT FOR SPORTSMAN'S LODGE**

LOT #1 LA HWY 27 HACKBERRY, LA 70645

JOB No: 2141 DATE: 05-11-15  
 DRAWN BY: CKD CHECKED BY: CKD

The above drawings and specifications, design and arrangements represented hereby are preliminary and subject to change without notice. They are not to be used for construction or for any other purpose without the written consent of Dammon Engineering. Please contact with these drawings or specifications that contain any errors, omissions, or other discrepancies, immediately upon receipt of these drawings or specifications.

SHEET TITLE: SITE PLAN SCHEME "B"

DRAWING NUMBER: **C101**

SHEET NO: 00 of 4