

PLANNING INFORMATION

BUILDING SQUARE FOOTAGE =

LEVEL 1	12,219
LEVEL 2	12,683
LEVEL 3	12,683
LEVEL 4	12,683
TOTAL SF	50,168 SF TOTAL

LOBBY BREAKDOWN:

DOUBLE QUEEN	1
DOUBLE QUEEN-ACC	1
DOUBLE QUEEN-ACC W/1.5	1
EXTENDED KING SUITES	4
TOTAL GUEST ROOMS =	19

2ND, 3RD & 4TH LEVELS (PER LEVEL):

DOUBLE QUEEN-ACC	19
DOUBLE QUEEN-ACC	1
EXTENDED KING SUITES	7
TOTAL GUEST ROOMS =	27

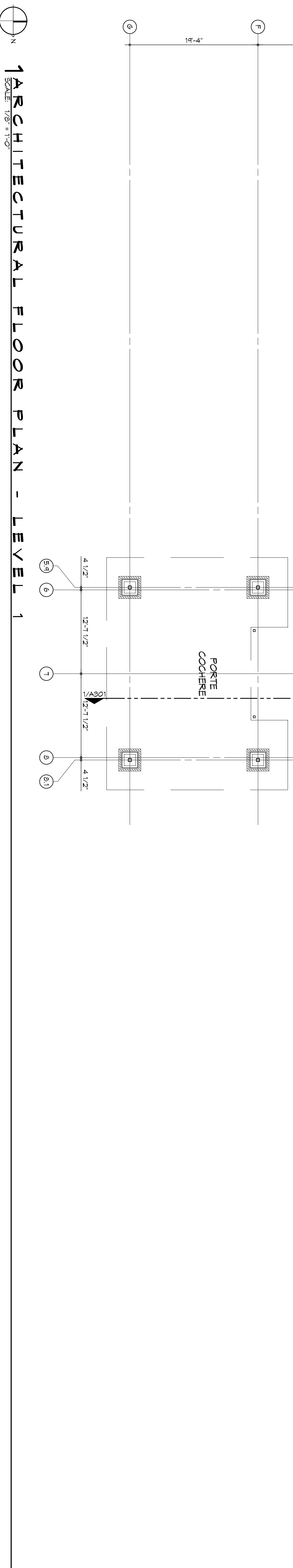
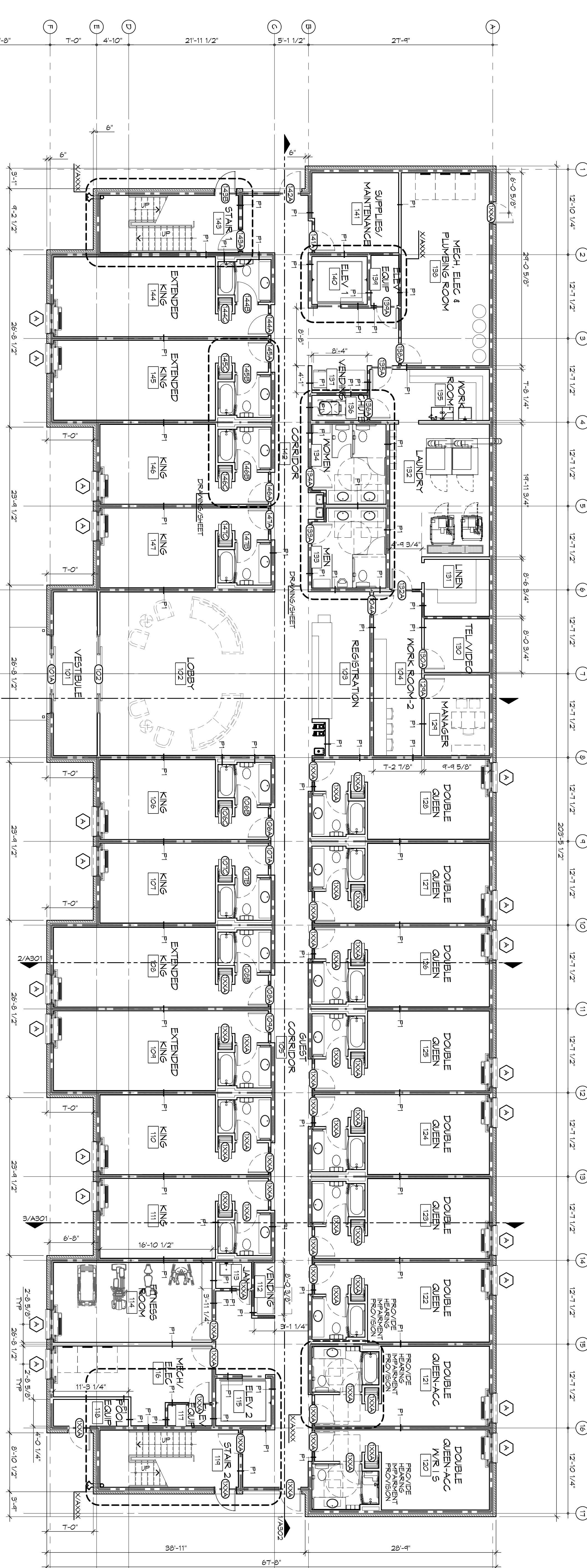
LEVEL 1 = 14 GUEST ROOMS - 81 (Q/WS) LEVEL 2, 3, 4 = 100 TOTAL ROOMS

TOTAL DOUBLE QUEEN SUITES =	46
TOTAL DOUBLE QUEEN ACC =	1
TOTAL DOUBLE QUEEN ACC W/1.5 =	1
TOTAL EXTENDED KING SUITES =	22
TOTAL GUEST ROOMS =	100

TOTAL HANDICAP ACCESSIBLE = 5

TOTAL GUEST ROOMS WITH HEARING = 4

SEE PLANS



#	DESCRIPTION	DATE

DAMMON ENGINEERING, INC.
Architects & Engineers

Chief Architect: Kevin J. Kinchen, NCARB
 Chief Engineer: Brian Mistich, PE
 554 Old Spanish Trail
 Stidell, LA 70458

www.dammoneengineering.com
 info@dammoneengineering.com
 PH: 985.649.5832
 F: 985.641.5950

PRELIMINARY NOT FOR CONSTRUCTION

U S SPORTSMAN - 03

NEW HOTEL & RESTAURANT FOR
SPORTSMAN - 03

LOT #1 LA HWY 27
 HACKBERRY, LA 70645

JOB No: 2141 DATE: MARCH 2015

DRAWN BY: CKD/JTL CHECKED BY: CKD

SHEET TITLE:
 ARCHITECTURAL FLOOR PLAN - LEVEL 1

DRAWING NUMBER:

A101

SHEET No. 02 OF 5

ARCHITECTURAL FLOOR PLAN - LEVEL 1
 SCALE: 1/8" = 1'-0"