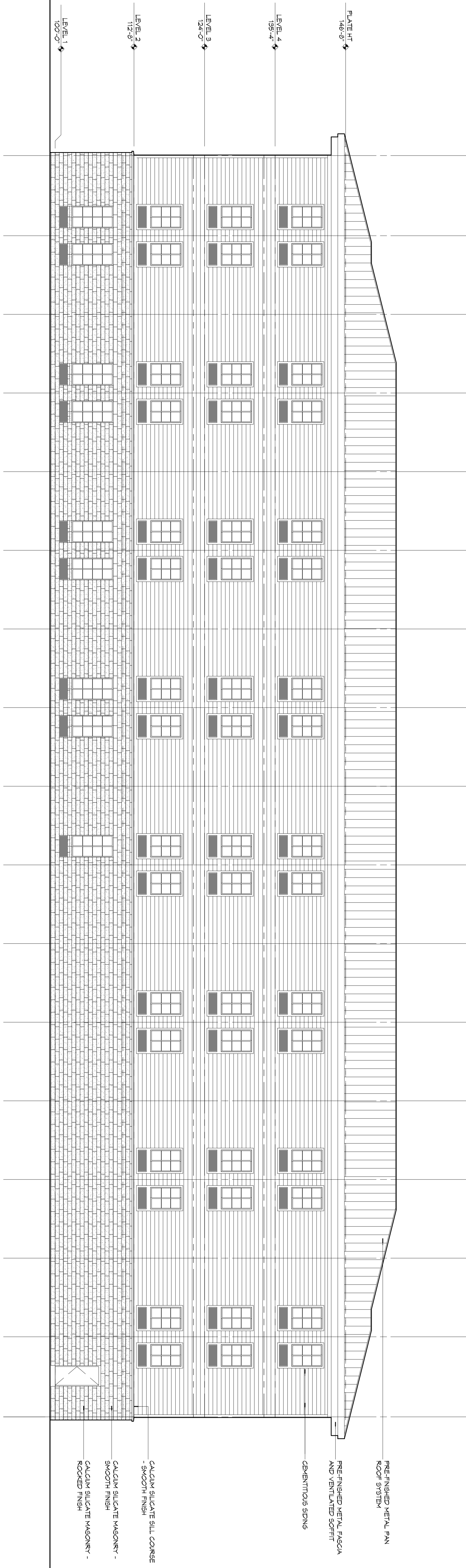


**EXTERIOR ELEVATION RESTAURANT**

WEST

REVISIONS		DATE
#	DESCRIPTION	

- 1
- 2
- 3
- 4
- 5
- 6
- 7
- 8
- 9
- 10
- 11
- 12
- 13
- 14
- 15
- 16
- 17



**EXTERIOR ELEVATION**

EAST

**NEW HOTEL & RESTAURANT FOR**  
**SPORTSMAN LODGE**  
 LOT #1 LA HWY 27  
 HACKBERRY, LA 70645

JOB No: 2141 DATE: MAY 21, 2015  
 DRAWN BY: KJK CHECKED BY: KJK

The above drawings and specifications, design and arrangements represented hereby are prepared by Dammon Engineering, Inc. and the user thereof shall be deemed to be in full and exclusive reliance on the professional judgment and skill of the engineer or architect herein named. No liability shall be assumed by Dammon Engineering, Inc. for any errors or omissions in these drawings or specifications, or for any consequences arising therefrom, unless it is shown that the same were prepared or developed without the written consent of Dammon Engineering, Inc. or that they were prepared or developed in whole or in part by another person or firm.

**A202**

SHEET NO. 02 of 4

DRAWING NUMBER:

SHEET TITLE:  
 EXTERIOR ELEVATION

**DAMMON**  
**ENGINEERING, INC.**  
*Architects & Engineers*

Chief Architect: Kevin J. Kinchen, NCARB  
 Chief Engineer: Brian Mistich, PE  
 554 Old Spanish Trail  
 Slidell, LA 70458

www.dammonengineering.com  
 info@dammonengineering.com  
 PH: 985.649.5832  
 F: 985.641.5950