

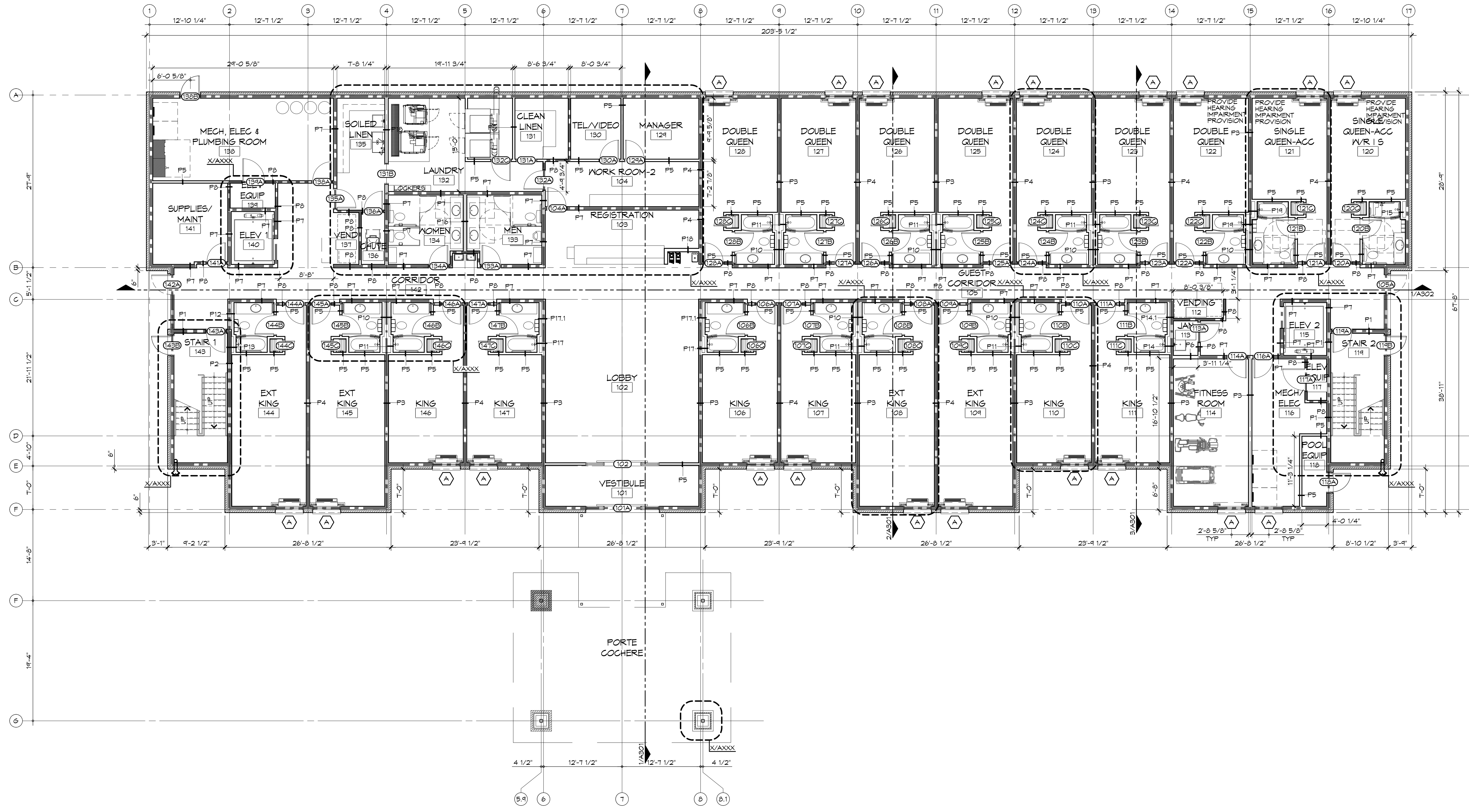
GENERSHEET NOTES

- ALL DIMENSIONS ARE FACE-OF-WALL TO FACE-OF-WALL UNLESS NOTED OTHERWISE.
- ALL PLUMBING FIXTURES, FURNITURE, AND APPLIANCES THAT ARE SHOWN AS GRAYED AND DASHED ARE TO BE OWNER PROVIDED AND NOT IN CONTRACT (N/C) AND ARE SHOWN FOR COORDINATION PURPOSES ONLY. CONTRACTOR TO VERIFY THOSE ITEMS OWNER FURNISHED AND CONTRACTOR INSTALLED (OFCI).
- REFER TO PARTITION TYPES FOR PARTITION THICKNESS WHERE NOT SHOWN ON PLAN.
- ALL MANUFACTURED ARTICLES, MATERIALS, AND EQUIPMENT SHALL BE CONDITIONED, USED APPLIED, INSTALLED, CONNECTED, ERECTED, AND CLEANED IN ACCORDANCE WITH THE MANUFACTURERS WRITTEN SPECIFICATIONS OR INSTRUCTIONS.
- FOR ALL WOOD MEMBERS REQUIRED BY CODE TO BE FIRE RETARDANT TREATED, PROVIDE PRESSURE IMPREGNATION WITH FIRE RETARDANT CHEMICALS TO PROVIDE UL FRS FIRE HAZARD CLASSIFICATION. ALL WOOD SHALL BE IDENTIFIED WITH A UL LABEL CERTIFYING THIS CLASSIFICATION AND FM DIAMOND.
- APPROVED FIRE EXTINGUISHERS SHALL BE FURNISHED, LOCATED, AND INSTALLED BY THE GENERAL CONTRACTOR, AS REQUIRED BY THE GOVERNING BODY. COORDINATE EXACT LOCATION WITH THE ARCHITECT.
- ALL FIRE EXTINGUISHERS SHALL BE FIVE POUND "ABC" RATED FIRE EXTINGUISHER(S) AND/OR CABINET(S) WHERE SHOWN ON THESE PLANS.
- ALL PENETRATIONS OF FIRE RESISTIVE FLOORS OR SHAFT WALLS SHALL BE PROTECTED BY MATERIALS AND INSTALLATION DETAILS THAT CONFORM TO UL STANDARDS FOR THROUGH PENETRATIONS FIRESTOP SYSTEMS. SEAL AROUND ALL PENETRATIONS (DUCTS, PIPES, CONDUITS, ETC.) AT FIRE-RATED ASSEMBLIES. SEAL SHALL NOT DIMINISH RATING OF ASSEMBLY. AT CONCRETE OR MASONRY, SEAL OFF OPENINGS WITH CONCRETE GROUT. AT PLASTER OR DRYWALL, DAM UP GAPS AND FILL WITH UL APPROVED SEALANT OR PUTTY PER MANUFACTURERS RECOMMENDATIONS.
- WRAP AROUND ALL ARCHITECTURAL, MECHANICAL, OR ELECTRICAL BOXES, RECESSED/PENETRATED INTO ANY FIRE-RATED WALLS WITH 5/8" TYPE "X" GYPSUM BOARD UNLESS WALL IS OF CONCRETE CONSTRUCTION.
- SEE PROJECT SPECIFICATIONS FOR TOILET ACCESSORY HARDWARE SCHEDULE.
- SEE SHEET A201 FOR MASONRY EXPANSION JOINT LOCATIONS NOT SHOWN ON THIS SHEET.
- SEAL AROUND ALL PENETRATIONS (DUCTS, PIPES, CONDUITS, ETC.) AT NEW AND EXISTING FIRE-RATED ASSEMBLIES. SEAL SHALL NOT DIMINISH RATING OF ASSEMBLY. CONCRETE OR MASONRY, SEAL OFF OPENINGS WITH CONCRETE GROUT. AT PLASTER OR DRYWALL, DAM UP GAPS AND FILL WITH UL APPROVED SEALANT OR PUTTY PER MANUFACTURERS RECOMMENDATIONS.

DAMMON
ENGINEERING, INC.

Architects & Engineers

www.dammonengineering.com
info@dammonengineering.com
PH: 985.649.5832
554 Old Spanish Trail
Slidell, LA 70568
F: 985.641.5990



REVISIONS	DATE

SEAL:

**PRELIMINARY
NOT FOR
CONSTRUCTION**

**S E
L
S P O R T S M A N ' S
P O O L**

LOT 11 LA HWY 27
MOOREHEAD, LA 70645
JOB No: 2141 DATE: JUN 25, 2015
DRAWN BY: C&D/JTL CHECKED BY: CKD

1 ARCHITECTURAL FLOOR PLAN - LEVEL 1
SCALE: 1/8" = 1'-0"

SHEET TITLE:
ARCHITECTURAL FLOOR
PLAN - LEVEL 1

DRAWING NUMBER:
A101

SHEET No: Value of #