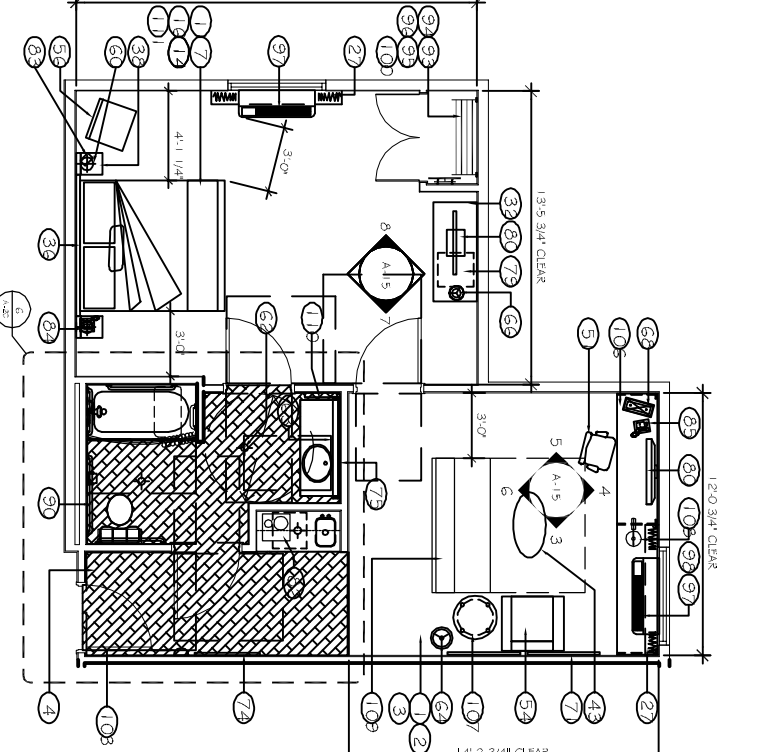
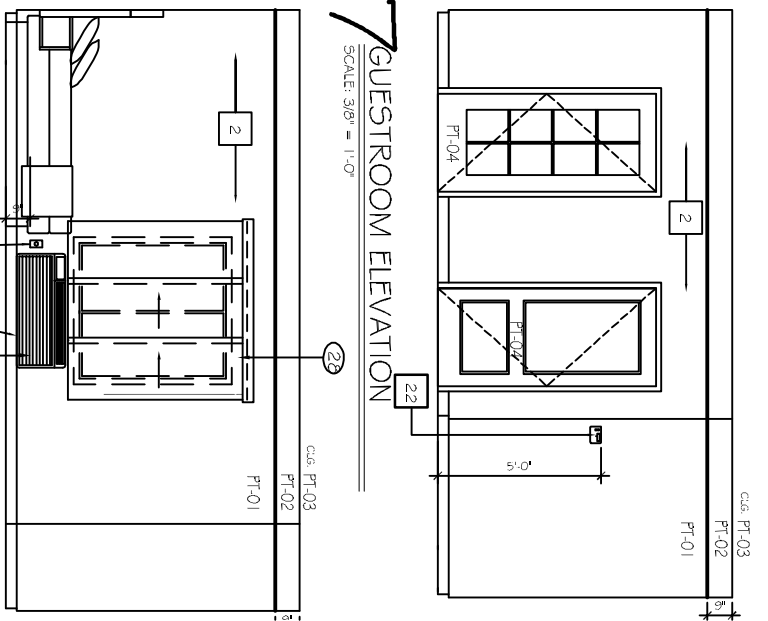


1
DIMENSIONAL CONTROL PLAN
SCALE: 1/4" = 1'-0"

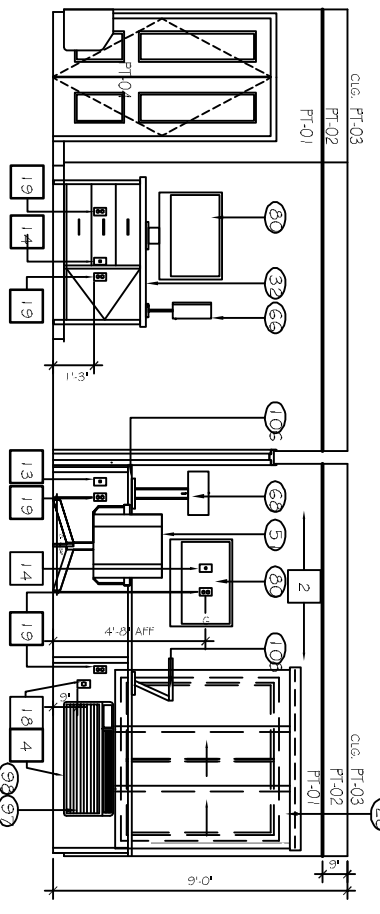


2
FURNITURE PLAN
SCALE: 1/4" = 1'-0"

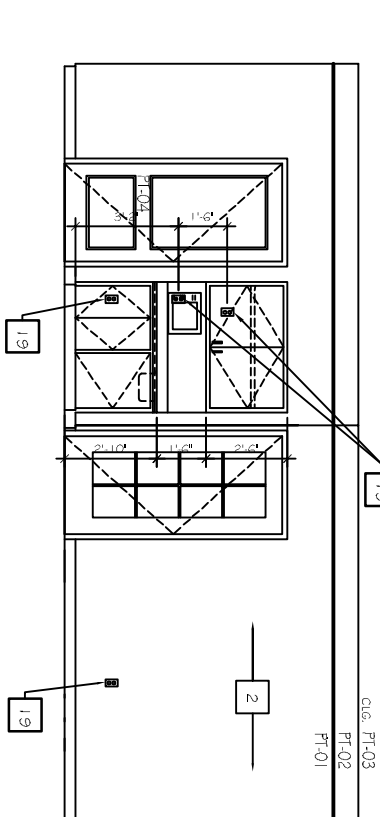


7
GUESTROOM ELEVATION
SCALE: 3/8" = 1'-0"

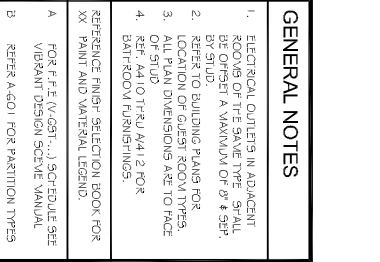
FF&E SCHEDULE (CONTINUED)	
ART FURNITURE (00)	<ul style="list-style-type: none"> ① FRAMED ARTWORK IN GUESTROOM ② FRAMED ARTWORK IN BATHROOM (NOT USED) ③ FRAMED ARTWORK IN GUESTROOM (NOT USED) ④ FULL LENGTH LAMINAR ⑤ VINTAGE LAMP ⑥ VINTAGE LAMP ⑦ VINTAGE LAMP ⑧ VINTAGE LAMP ⑨ VINTAGE LAMP ⑩ VINTAGE LAMP ⑪ VINTAGE LAMP ⑫ VINTAGE LAMP ⑬ VINTAGE LAMP ⑭ VINTAGE LAMP ⑮ VINTAGE LAMP ⑯ VINTAGE LAMP ⑰ VINTAGE LAMP ⑱ VINTAGE LAMP ⑲ VINTAGE LAMP ⑳ VINTAGE LAMP ㉑ VINTAGE LAMP ㉒ VINTAGE LAMP ㉓ VINTAGE LAMP ㉔ VINTAGE LAMP ㉕ VINTAGE LAMP ㉖ VINTAGE LAMP ㉗ VINTAGE LAMP ㉘ VINTAGE LAMP ㉙ VINTAGE LAMP ㉚ VINTAGE LAMP ㉛ VINTAGE LAMP ㉜ VINTAGE LAMP ㉝ VINTAGE LAMP ㉞ VINTAGE LAMP ㉟ VINTAGE LAMP ㊱ VINTAGE LAMP ㊲ VINTAGE LAMP ㊳ VINTAGE LAMP ㊴ VINTAGE LAMP ㊵ VINTAGE LAMP ㊶ VINTAGE LAMP ㊷ VINTAGE LAMP ㊸ VINTAGE LAMP ㊹ VINTAGE LAMP ㊺ VINTAGE LAMP
FF&E SCHEDULE (00)	<ul style="list-style-type: none"> ① CARPET FLOORING (00) ② CARPET FLOORING (00) ③ CARPET FLOORING (00) ④ CARPET FLOORING (00) ⑤ CARPET FLOORING (00) ⑥ CARPET FLOORING (00) ⑦ CARPET FLOORING (00) ⑧ CARPET FLOORING (00) ⑨ CARPET FLOORING (00) ⑩ CARPET FLOORING (00) ⑪ CARPET FLOORING (00) ⑫ CARPET FLOORING (00) ⑬ CARPET FLOORING (00) ⑭ CARPET FLOORING (00) ⑮ CARPET FLOORING (00) ⑯ CARPET FLOORING (00) ⑰ CARPET FLOORING (00) ⑱ CARPET FLOORING (00) ⑲ CARPET FLOORING (00) ⑳ CARPET FLOORING (00) ㉑ CARPET FLOORING (00) ㉒ CARPET FLOORING (00) ㉓ CARPET FLOORING (00) ㉔ CARPET FLOORING (00) ㉕ CARPET FLOORING (00) ㉖ CARPET FLOORING (00) ㉗ CARPET FLOORING (00) ㉘ CARPET FLOORING (00) ㉙ CARPET FLOORING (00) ㉚ CARPET FLOORING (00) ㉛ CARPET FLOORING (00) ㉜ CARPET FLOORING (00) ㉝ CARPET FLOORING (00) ㉞ CARPET FLOORING (00) ㉟ CARPET FLOORING (00) ㊱ CARPET FLOORING (00) ㊲ CARPET FLOORING (00) ㊳ CARPET FLOORING (00) ㊴ CARPET FLOORING (00) ㊵ CARPET FLOORING (00) ㊶ CARPET FLOORING (00) ㊷ CARPET FLOORING (00) ㊸ CARPET FLOORING (00) ㊹ CARPET FLOORING (00) ㊺ CARPET FLOORING (00)



3
GUESTROOM ELEVATION
SCALE: 3/8" = 1'-0"

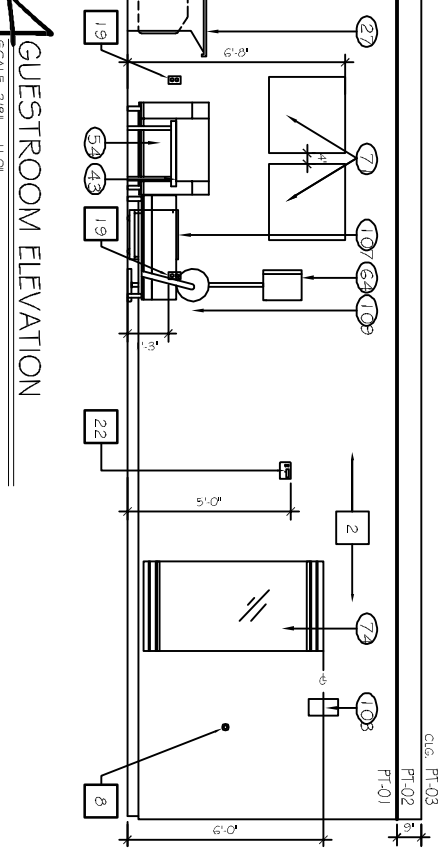


5
GUESTROOM ELEVATION
SCALE: 3/8" = 1'-0"

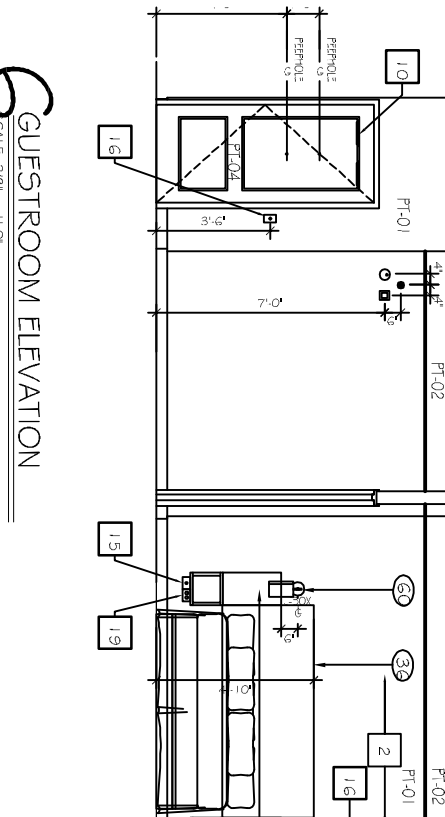


8
GUESTROOM ELEVATION
SCALE: 3/8" = 1'-0"

GENERAL NOTES	
1.	ELECTRICAL OUTLETS IN ADJACENT ROOMS OF THE SAME TYPE SHALL BE BY STUD.
2.	REFER TO BUILDING PLANS FOR LOCATION OF GUEST ROOM TYPES. ALL PLAN DIMENSIONS ARE TO FACE OF STUD.
3.	REFER TO THEU AND 12 FOR BATHROOM FURNISHINGS.
4.	REFERENCE FINISH SELECTION BOOK FOR XX PAINT AND VERTICAL LEGEND.
A.	FOR F.P.E. (V.G.S.T...) SCHEDULE SEE VIBRANT DESIGN SOCIAL MANUAL.
B.	REFER A.C.O. FOR PARTITION TYPES.

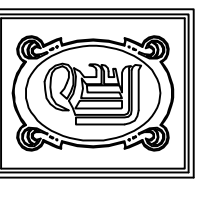


4
GUESTROOM ELEVATION
SCALE: 3/8" = 1'-0"



6
GUESTROOM ELEVATION
SCALE: 3/8" = 1'-0"

DRAWING NOTES	
A.	VINTAGE LAMPING: VINTAGE LAMPING TO BE INSTALLED AT 48" FROM THE ROOM AXIS. DETERMINE STAIRING POINT FOR EACH ROW SO AS TO MAINTAIN A MINIMUM 12" LONG PIECE AT EDGES.



DAMMON ENGINEERING, INC.
 CHIEF ENGINEER
 EMMETT DAMMON, P.E.
 CHIEF ARCHITECT
 ROBERT WILTSE

554 OLD SPANISH TRAIL
 SUDDLE, LA, 70458
 OFFICE: 985-649-5832
 FAX: 985-641-5950
 WEBSITE: WWW.DAMMONENGINEERING.COM
 EMAIL: DAMMONENG@BELL-SOUTH.NET

ARCHITECTURE
 ENGINEERING
 STUDIES
 PLANNING
 INVESTIGATION
 EXPERT WITNESSES

LA QUINTA
 INN & SUITES
 SPORTSMAN PARK
 LOT 14
 CABLEAS PARKWAY
 LOUISIANA

TWO ROOM
 SUITE

REV:
 SCALE: AS NOTED
 JOB#: 2141
 DATE: 07-03-12
 SHEET 20
A-15
 OF 36