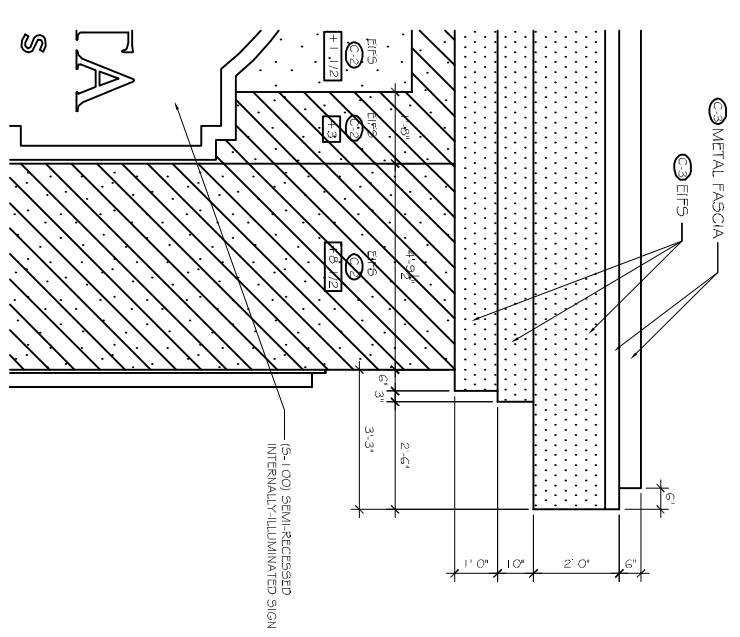
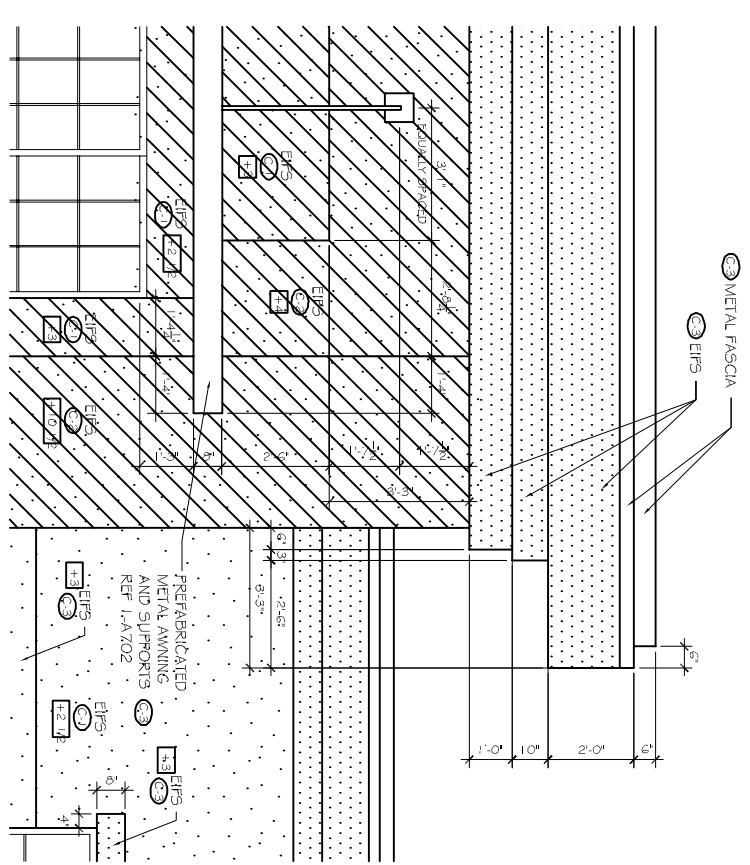


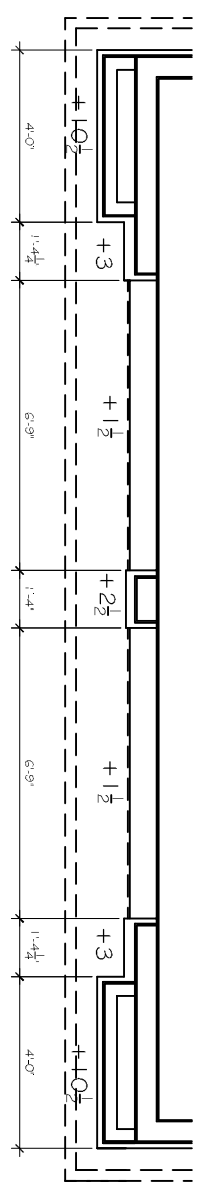
10 ELEVATION DETAILS
SCALE: 1/2" = 1'-0"



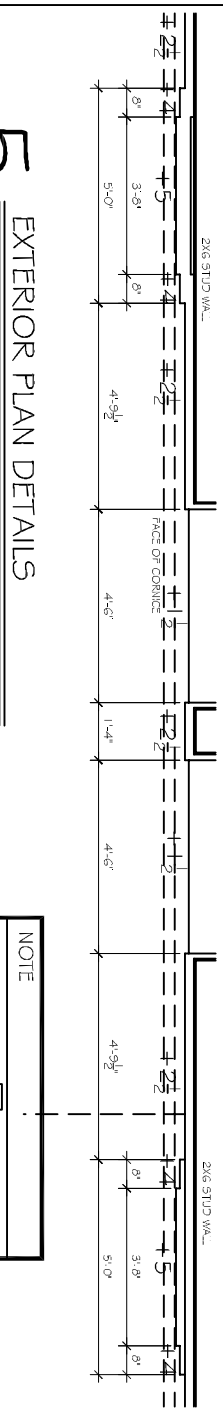
9 ELEVATION DETAILS
SCALE: 1/2" = 1'-0"



8 ELEVATION DETAILS
SCALE: 1/2" = 1'-0"

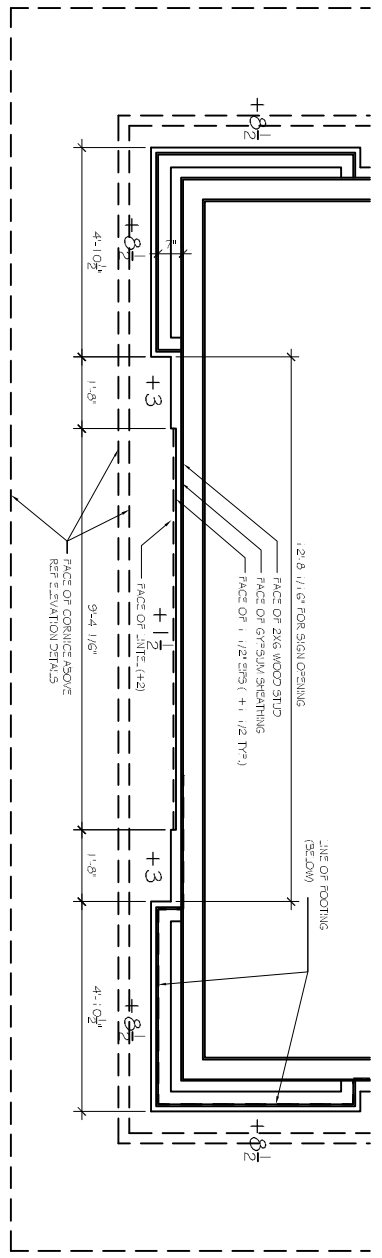


6 EXTERIOR PLAN DETAILS (FRONT CENTER PEDIMENT)
SCALE: 1/2" = 1'-0"

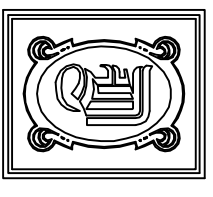


5 EXTERIOR PLAN DETAILS
SCALE: 1/2" = 1'-0"

NOTE
FACE OF SHEATHING IS ± 0 FOR THE PURPOSE OF DETERMINING THE EIFS THICKNESS. EIFS THICKNESS NOT TO EXCEED 4" - FRAMING REQUIRED AT ALL LOCATIONS WHERE EIFS THICKNESS IS GREATER THAN ± 4



7 EXTERIOR PLAN DETAILS (TOWER)
SCALE: 1/2" = 1'-0"



DAMMON ENGINEERING, INC.

CHIEF ENGINEER
EMMETT DAMMON, P.E.
CHIEF ARCHITECT
ROBERT WILTSE

554 OLD SPANISH TRAIL
SUDELL, LA, 70458
OFFICE: 985-649-5832
FAX: 985-641-1950

WEBSITE: WWW.DAMMONENGINEERING.COM
EMAIL: DAMMONENG@BELL.SOUTH.NET

ARCHITECTURE
ENGINEERING
STUDIES
PLANNING
INVESTIGATION
EXPERT WITNESS

LA QUINTA
INN & SUITES

SPORTSMAN PARK
LOT 14
CABLEAS PARKWAY
LOUISIANA

EXTERIOR
BUILDING
DETAILS

REV:

SCALE: AS NOTED

JOB#: 2141

DATE: 07-03-12

SHEET 12

A-7

OF 36