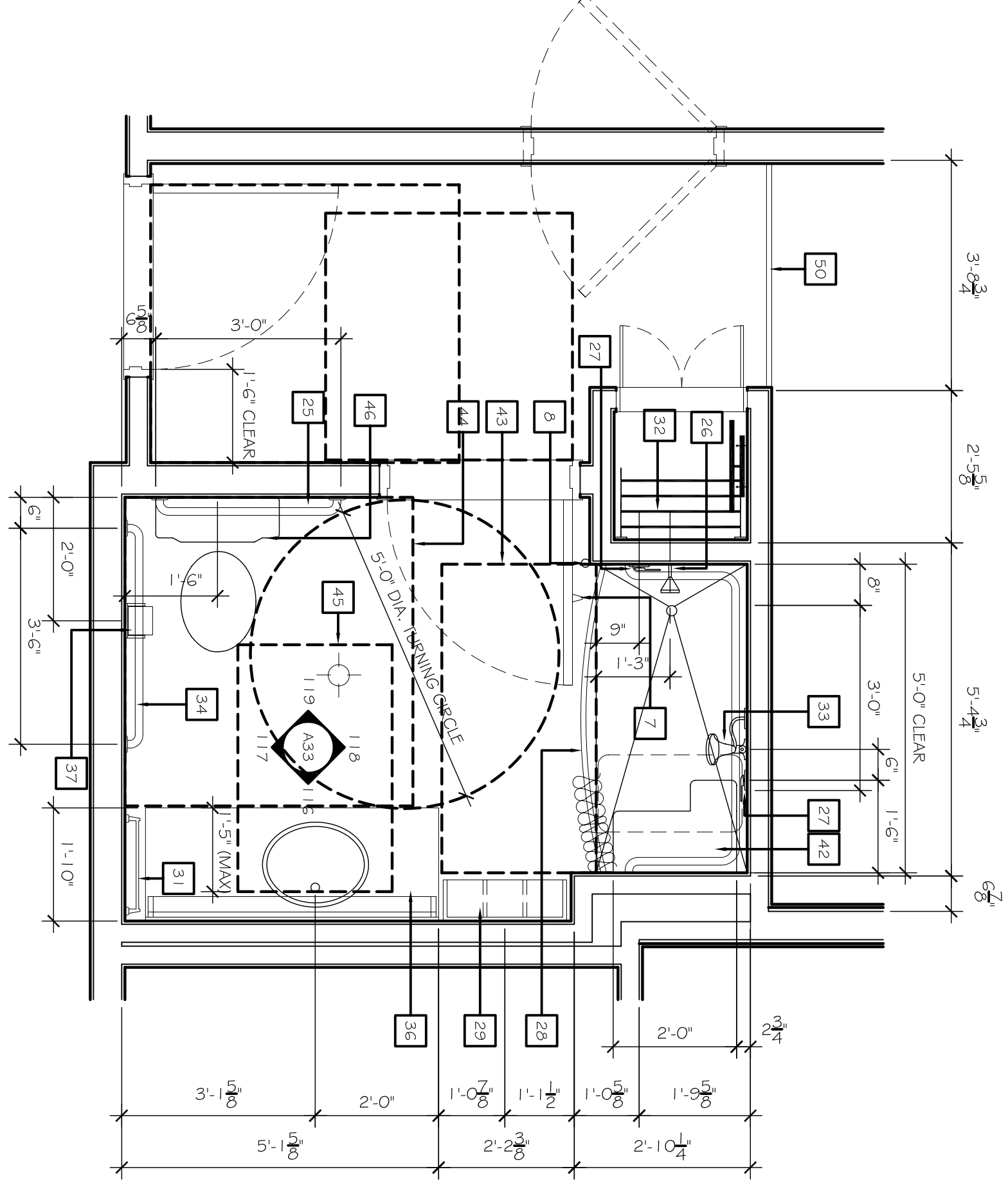
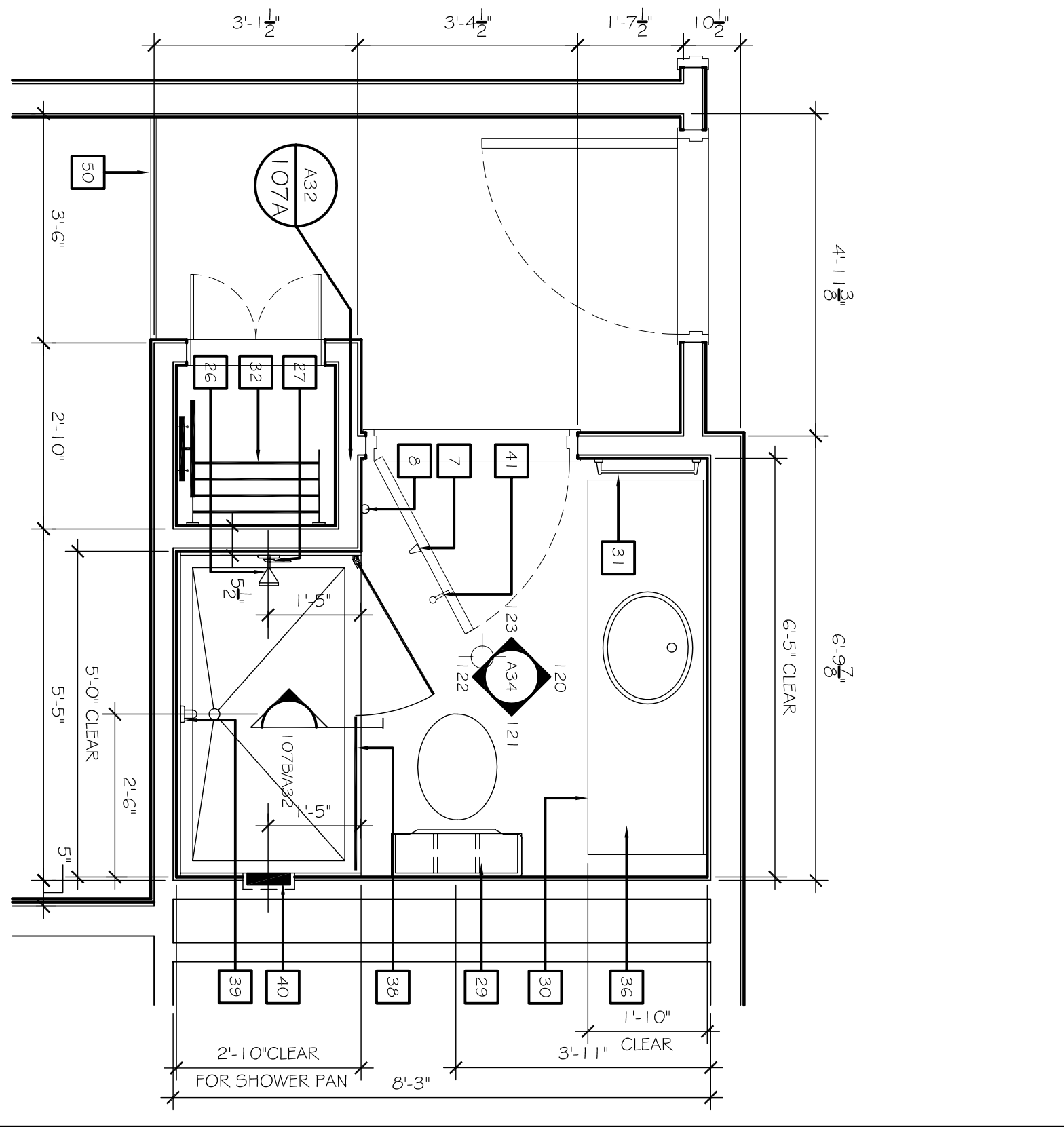


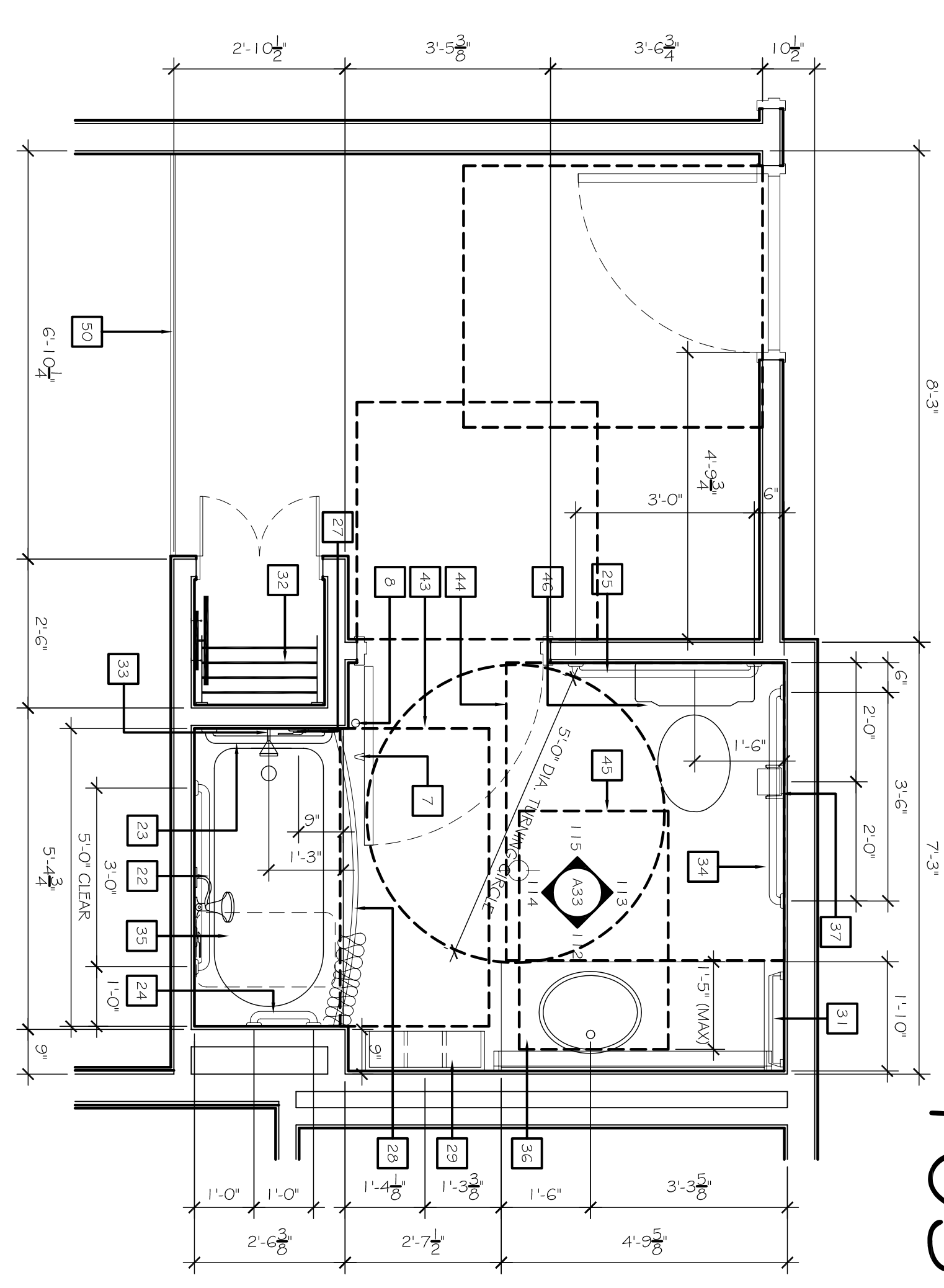
102 DOUBLE QUEEN BATH W/ TUB
SCALE: 1/2" = 1'-0"



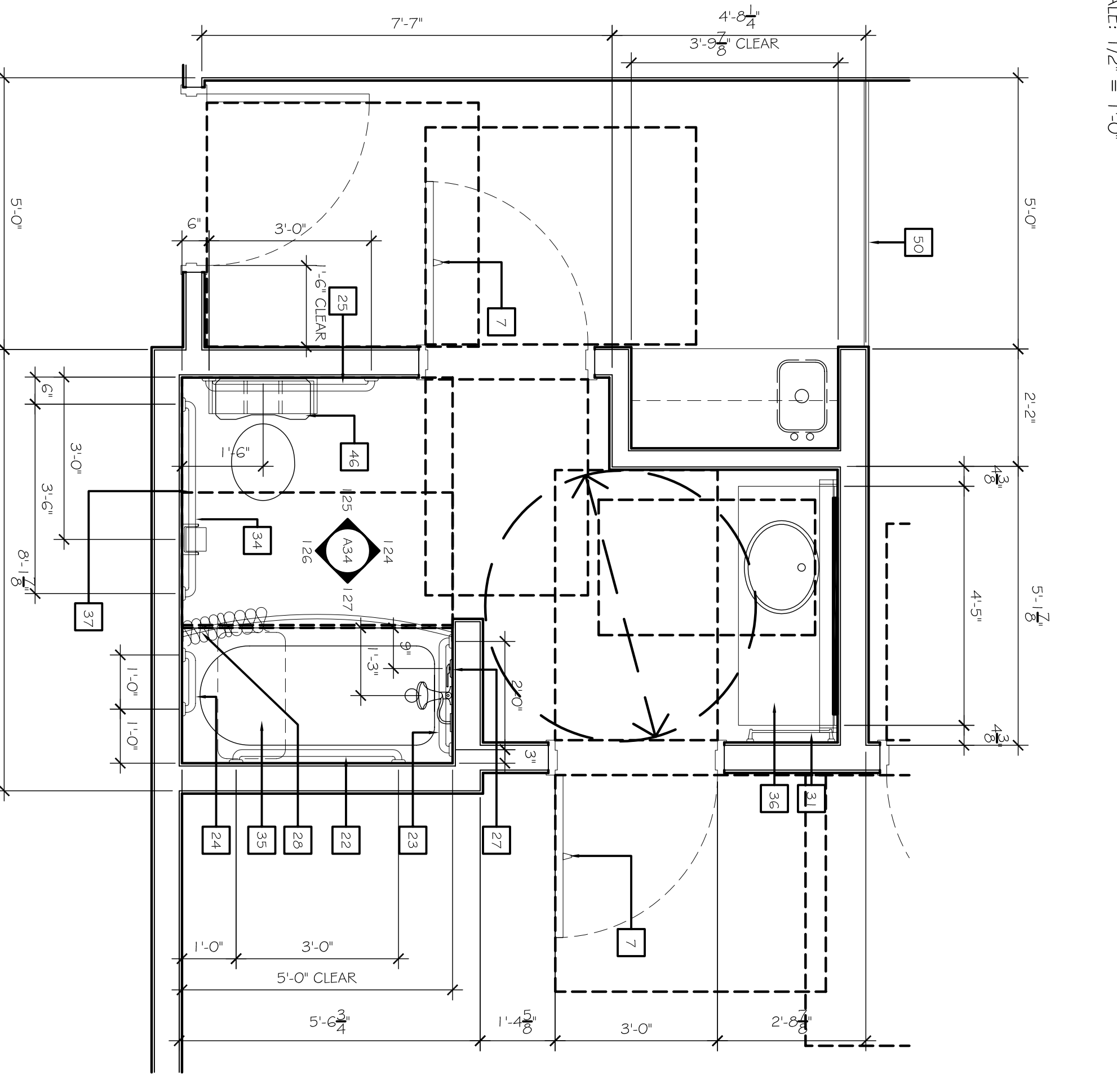
103 DOUBLE QUEEN ACCESSIBLE BATH W/ ROLL-IN SHOWER
SCALE: 1/2" = 1'-0"



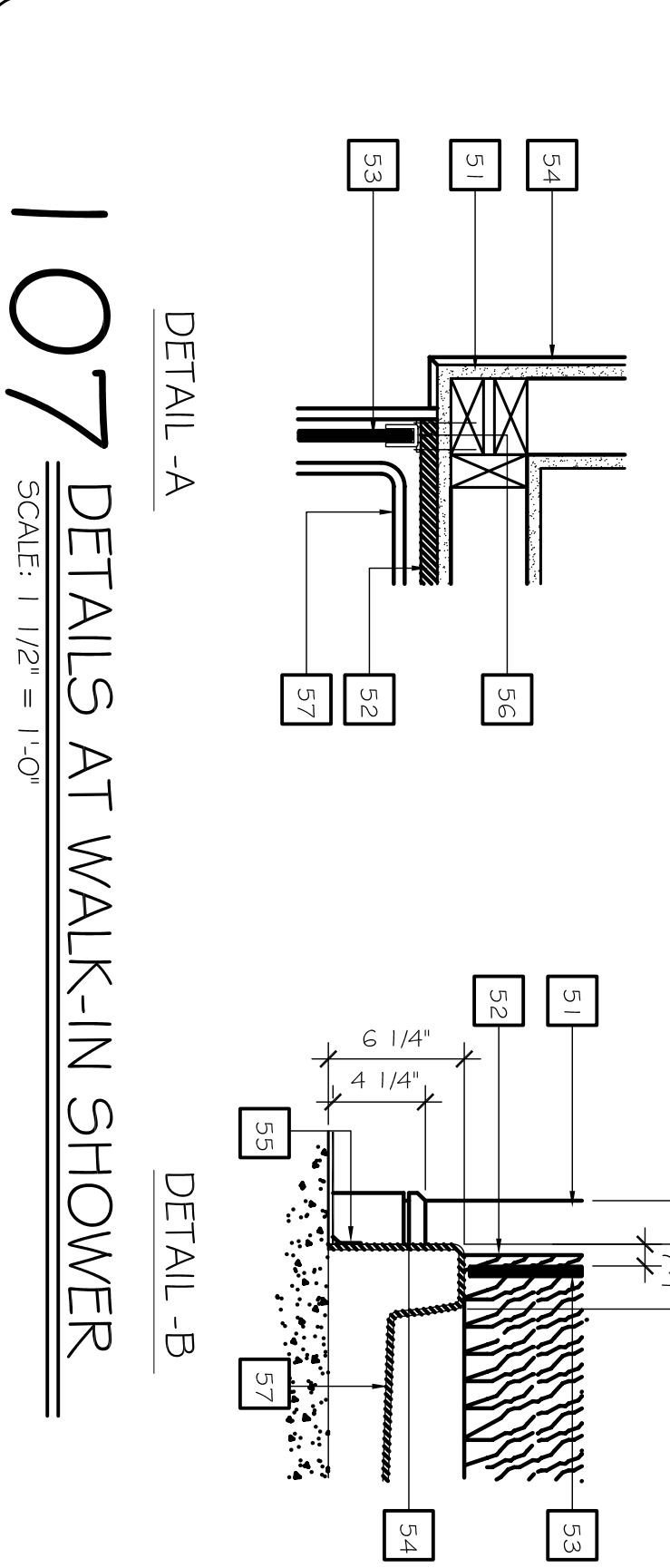
104 KING BATH W/ WALK-IN SHOWER
SCALE: 1/2" = 1'-0"



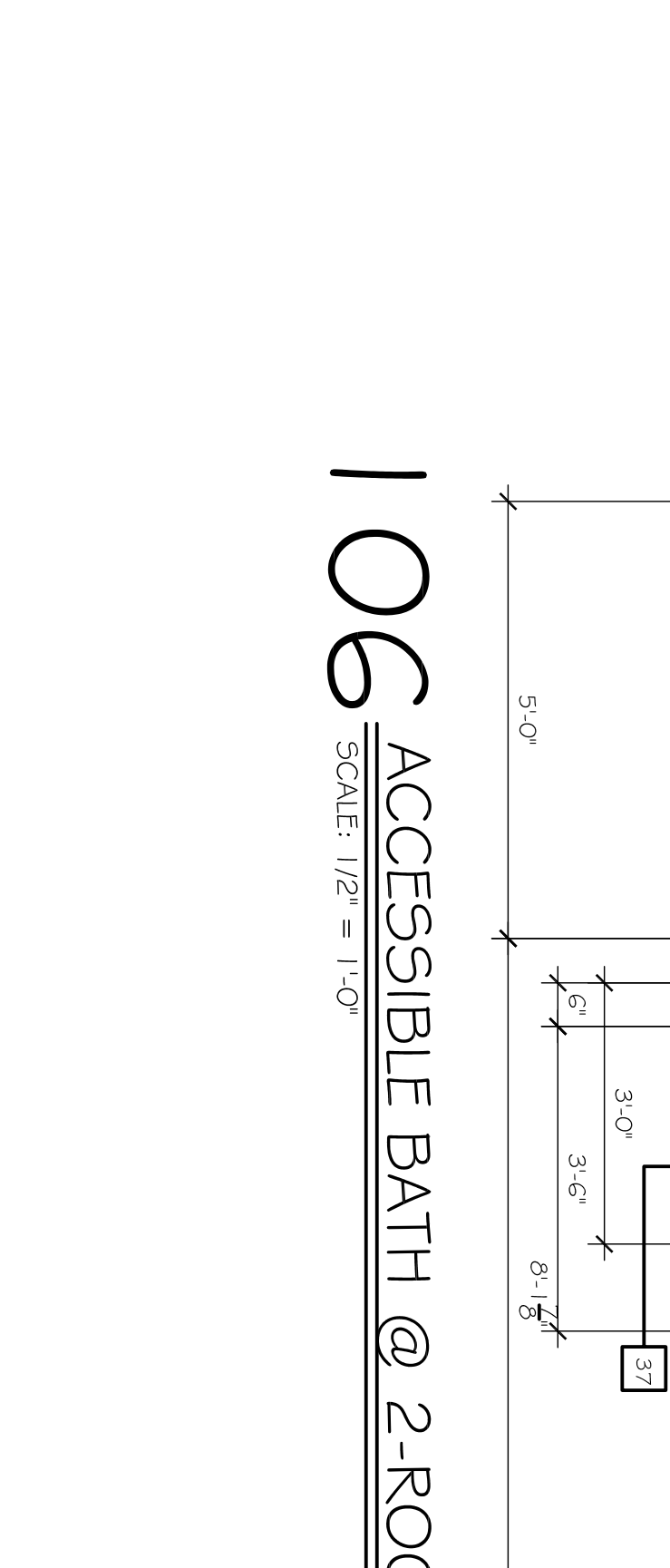
105 KING ACCESSIBLE BATH W/ TUB
SCALE: 1/2" = 1'-0"



106 ACCESSIBLE BATH @ 2-ROOM SUITE
SCALE: 1/2" = 1'-0"



DETAIL - A



DETAIL - B

107 DETAILS AT WALK-IN SHOWER
SCALE: 1/2" = 1'-0"

KEY SCHEDULE

- 1 CARPET PAD & BASE
- 2 TEXTURE DRYWALL - PER SELECTED INTERIOR SCHEME
- 3 CLOTHES ROD
- 4 THRU - WALL AIR CONDITIONING UNIT ROUGH OPENING 3' C.I. @X11' - 4'-1/4" MIN.
- 5 REINFORCING BLOCKING IN WALL
- 6 TEXTURED CEILING - PER SELECTED INTERIOR SCHEME
- 7 DOOR MOUNTED DOOR STOP
- 8 WALL MOUNTED DOOR STOP
- 9 DECORATIVE WOOD MOLDING
- 10 6 PANEL METAL DOOR AND FRAME - PAINTED. REFER TO DOOR SCHEDULE. T55A LOCK HARDWARE.
- 11 GYPSUM BOARD RETURN AT HEAD, JAMB & SILL
- 12 TELEPHONE/DATA DUPLEX HOUSING. PROVIDE 3/4" CONDUIT FULL TELEVISION OUTLET. REFER TO FLOOR PLANS AND ELEVATIONS FOR DIMENSIONS AND LOCATION.
- 13 TELEPHONE OUTLET. REFER TO FLOOR PLANS AND ELEVATIONS FOR DIMENSIONS AND LOCATION.
- 14 LIGHT SWITCH. REFER TO FLOOR PLANS AND ELEVATIONS FOR DIMENSIONS AND LOCATION. ILLUMINATED SWITCH AT ENTRY AND SERVICE AREAS.
- 15 CONNECTING DOORS. SEE BUILDING PLAN FOR LOCATION.
- 16 200V. OUTLET. REFER TO ELECTRICAL PLANS FOR DUTCH OUTLET.
- 17 MOUNTING HEIGHT OF HEADBOARD, NIGHTSTAND WALL (LAMP) BASED ON LOW PROFILE BOXSPRING.
- 18 2 - 3/8" GRAB BARS, 1 @ 34" A.F.F. & 1 @ 6" ABOVE TUB TO CENTERLINE.
- 19 2x4 GRAB BAR @ 34" A.F.F. TO CENTERLINE.
- 20 12" GRAB BAR @ 34" A.F.F. TO CENTERLINE.
- 21 36" GRAB BAR @ 34" A.F.F. TO CENTERLINE.
- 22 STAINLESS STEEL SHOWER HEAD @ 80" A.F.F.
- 23 SHOWER CONTROL LEVER.
- 24 CURVED SHOWER ROD @ 80" A.F.F. W/ CURTAIN.
- 25 TOWEL RACK
- 26 TOILET TISSUE HOLDER MOUNTED UNDER VANITY TOP IN WALLWORK.
- 27 TOWEL BAR @ 48" A.F.F.
- 28 CLOSET SHELF @ 72" A.F.F. (62" MAX @ ACCESSIBLE ROOMS).
- 29 HAND HELD SHOWER WAND W/ VERTICAL MOUNTING BAR.
- 30 42" GRAB BAR @ 34" A.F.F. TO CENTERLINE.
- 31 REMOVABLE SHOWER SEAT.
- 32 GRANITE / CULTURED STONE VANITY TOP (W/ ACCESSIBLE KNEE CLEARANCES BELOW @ ACCESSIBLE ROOMS). REF: 7/14/13
- 33 WALL MOUNTED (SURFACE) TOILET TISSUE HOLDER
- 34 TYPAPPED GLASS SHOWER ENCLOSURE W/ DOUBLE SWING DOOR, HINGES AND LATCH.
- 35 2x4 VERTICAL GRAB BAR MOUNTED AT 34" A.F.F. TO CENTERLINE.
- 36 8" x 8" x 3" DEEP RECESSED SOAP DISH, CULTURED MARBLE TO MATCH SHOWER SURROUND @ 42" A.F.F.
- 37 DOOR MOUNTED BUMPER / PROTECTOR W/ RUBBER TIP MOUNTED TO METAL GLASS SHOWER DOOR, BEFORE BATHROOM DOOR
- 38 PHOTO GLASS SHOWER DOOR.
- 39 WALL MOUNTED HOLD UP SHOWER SEAT @ 18" A.F.F. TO SEAT.
- 40 30"x60" CLEAR FLOOR SPACE AT TUB.
- 41 60"x56" CLEAR FLOOR SPACE AT TOILET.
- 42 30"x48" CLEAR FLOOR SPACE AT LAVATORY.
- 43 FLUSH LEVER ON ACCESSIBLE SIDE OF TANK.
- 44 GRANITE COUNTER TOP W/ CABINET. SEE SHEET A406 FOR ELEVATIONS.
- 45 UNDERMOUNT SINK AND FAUCET. SEE SHEET A406 FOR ELEVATIONS.
- 46 2" THICK WALL AT SHOWER (BY ROTATING THE STUDS PARALLEL DEPTH OF SHOWER PAN
- 47 VINYL REDUCER STRIP AT CARPET / AMTICO VINYL TRANSITION.
- 48 PARTITION WALL TYPICAL.
- 49 CULTURED STONE OR GRANITE TUB SURROUND. TYPICAL.
- 50 GLASS SHOWER DOOR AND PARTITION.
- 51 VINYL BASE BEYOND. TYPICAL.
- 52 VINYL TUB TRIM STRIP.
- 53 GLASS SHOWER DOOR HINGES, ANCHOR HINGES THRU TUB SURROUND IN TO WALL FRAMING.
- 54 ACRYLIC SHOWER RECEPTOR. TYPICAL.
- 55 3/4" PLYWOOD CURB W/ ALUM. SOLID WOOD EDGE. PAINTED AS SPECIFIED. ANCHORED TO THE ADJACENT WALL & BLOCKING ABOVE.
- 56 TOILET TISSUE PAPER HOLDER, AS SPECIFIED.
- 57 LINE OF VANITY ABOVE.

GENERAL NOTES

- 1. ELECTRICAL OUTLETS IN ADJACENT ROOMS OF THE SAME TYPE SHALL BE OFFSET A MAXIMUM OF 8" & SET BY STUD.
 - 2. REFER TO BUILDING PLANS FOR LOCATION OF GUEST ROOM TYPES.
 - 3. ALL PLAN DIMENSIONS ARE TO FACE OF STUD.
- REFERENCE FINISH SELECTION BOOK FOR PAINT AND MATERIAL LEGEND.

NOTE: PLAN DIMENSIONS SHOWN ON THIS DRAWING ARE TO FACE OF FINISH WALLS UNLESS NOTED OTHERWISE.
SEE F.F.E. SCHEDULE PER SELECTED INTERIOR DESIGN SCHEME. REFER TO A-16 FOR PARTITION TYPES

LAQUINTA INNS & SUITES

507 CONSTITUTION DRIVE
WEST MONROE, LOUISIANA 71292

JOB No: 2196 DATE: 04-15-2014
DRAWN BY: JTL CHECKED BY: CKD

DAMMON ENGINEERING, INC.
Architects & Engineers

CHIEF ENGINEER, BRIAN MISTICH, P.E.
CHIEF ARCHITECT, KEVIN KINCHEN
554 OLD SPANISH TRAIL
SLIDELL, LA 70458

dammonengineering.com
dammoneng@bellsouth.net
PHONE: 985-649-5832
FAX: 985-641-5950

ENLARGED GUESTROOM BATH PLANS

SHEET No: 40 OF 53

A32