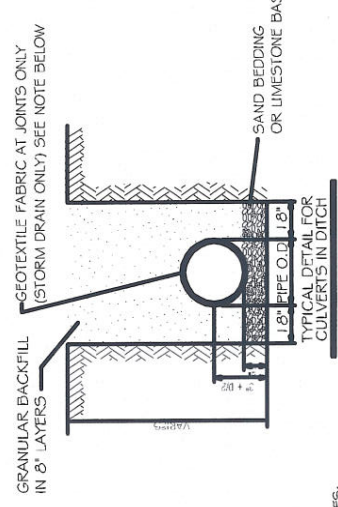
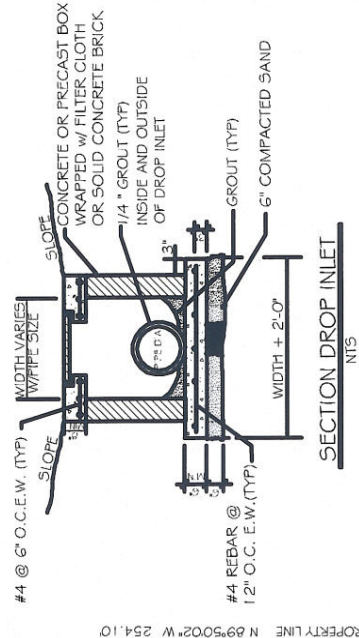
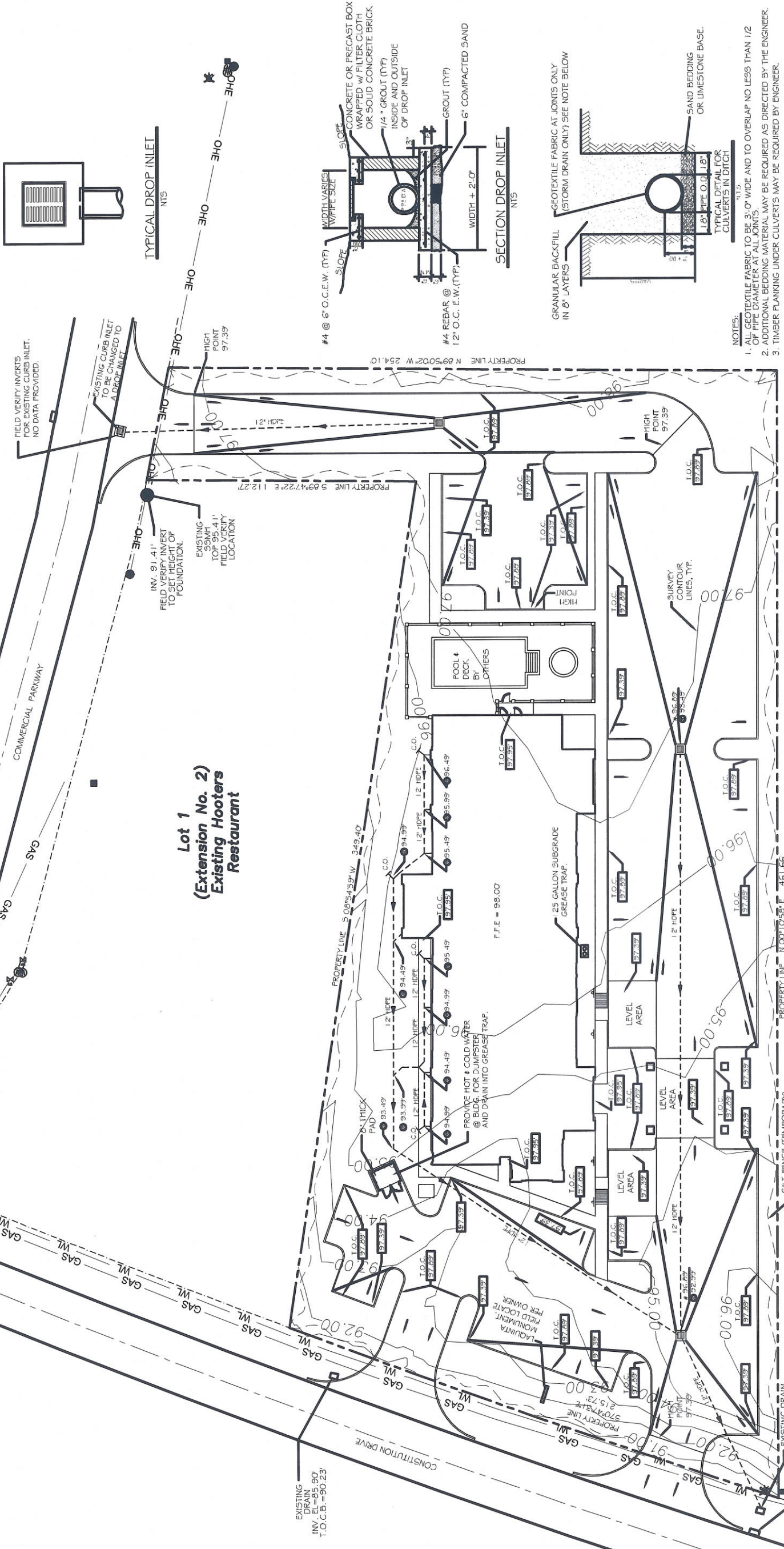


- LEGEND**
- - - PROPERTY LINE
 - - - SETBACK LINE
 - - - TEMPORARY SILT FENCING
 - - - NEW DRAIN LINE
 - - - NEW DROP INLET w/TEMP. SILT FENCING
 - - - SLOPE LINES
 - - - I.O. GRATE ELEVATION
 - - - INVERT ELEVATION
 - - - TOP OF CURB ELEVATION
 - - - TOP OF PAVING AT CURB

- NOTES:**
- 1) DRAIN PIPE IN PAVED AREA SHALL BE 12" HDPE.
 - 2) THE DOWN SPOUTS INTO POLYVINYL CHLORIDE PLASTIC PIPE MEETING CLASS 100 C-900 PVC.
 - 3) ELEVATIONS SHOWN ARE M.S.L.
 - 4) CONTRACTOR SHALL FIELD VERIFY ALL ELEVATIONS AND DRAINAGE SYSTEM LOCATIONS PRIOR TO START OF WORK.
 - 5) FOUNDATION PAD MINIMUM, SEE SOIL REPORT FOR FILL INFORMATION.
 - 6) DOWN SPOUTS SHALL FLOW INTO SUB-SURFACE DRAINAGE.
 - 7) THERE IS NO EVIDENCE OF EXISTING OFF-SITE FLOW CROSSING THE PROPERTY. DRAINAGE CALCULATIONS ARE DETERMINED ACCORDINGLY.



Handwritten signature and date: 3/10/2014



- NOTES:**
1. ALL GEOTEXTILE FABRIC TO BE 3'-0\"/>

DAMMON ENGINEERING INC.
Architects & Engineers

507 CONSTITUTION DRIVE
WEST MONROE, LOUISIANA 71282

CHIEF ENGINEER: BRIAN MISTICH, P.E.
554 OLD SPANISH TRAIL
SUITE LL 7045B
WEST MONROE, LA 70458
PHONE: 955-649-5832
FAX: 955-641-5950

LAQUINTA INNS & SUITES

REVISIONS

#	DESCRIPTION	DATE

DRAWN BY: JTL
CHECKED BY: CKD

JOB No: 2196
DATE: 02-03-2014

SITE DRAINAGE PLAN

SHEET No: 05 OF 53

C4

SITE DRAINAGE PLAN
SCALE: 1"=20'-0"