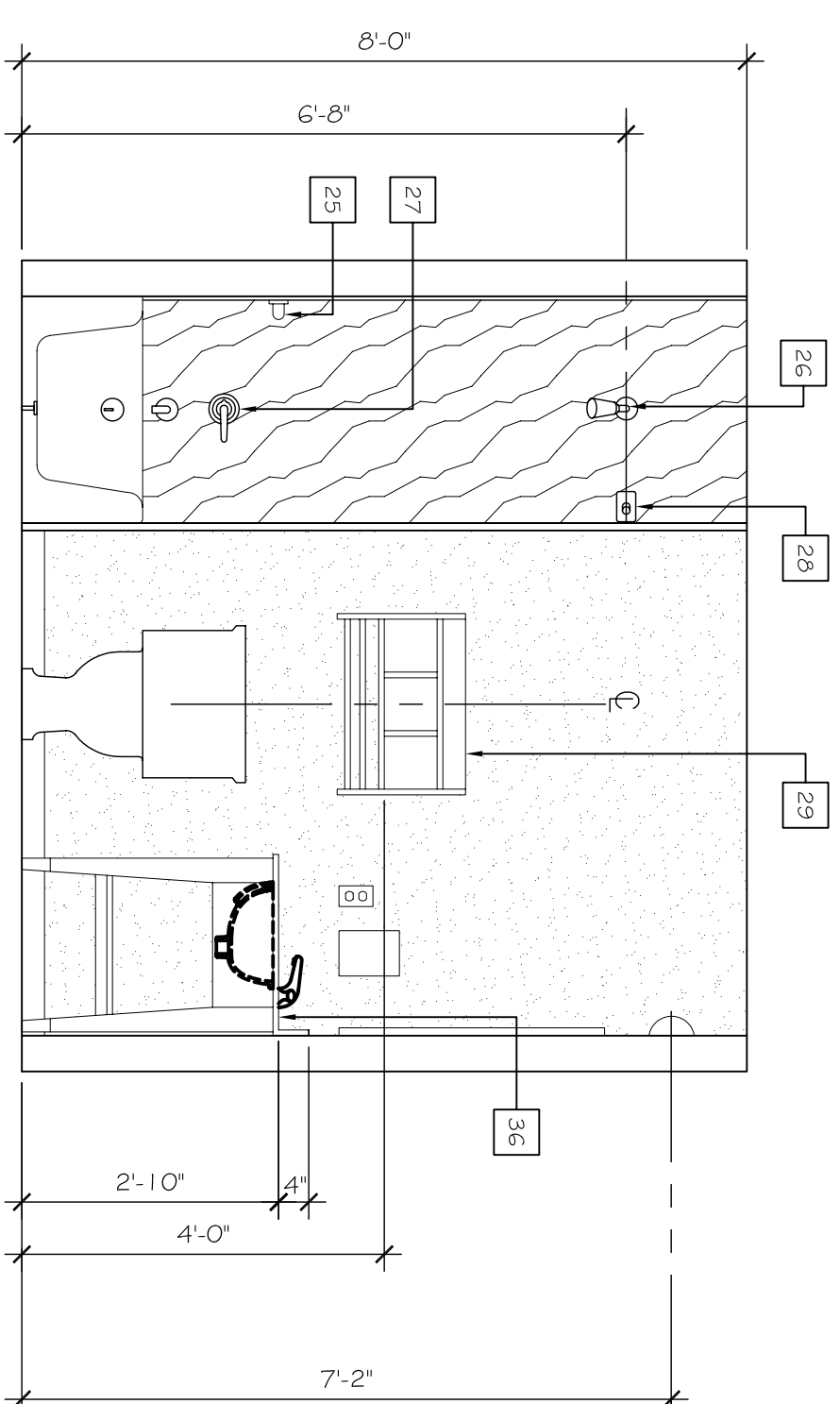
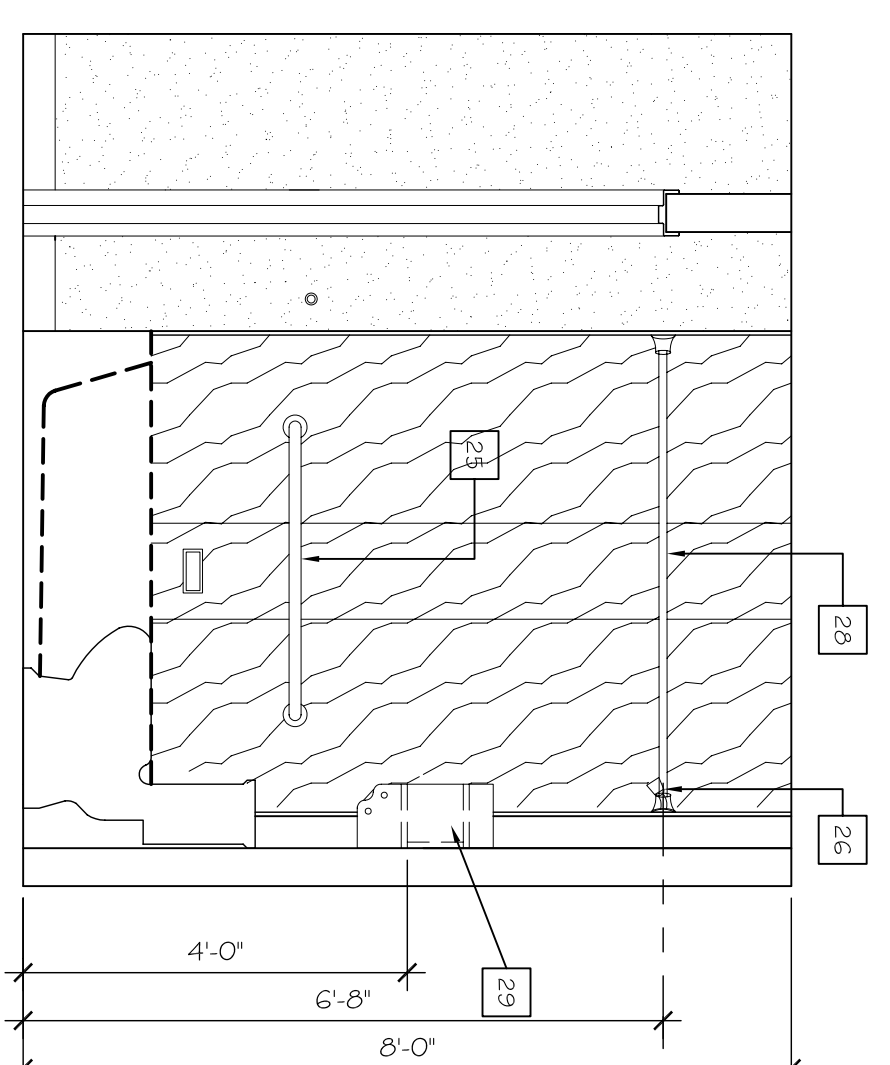


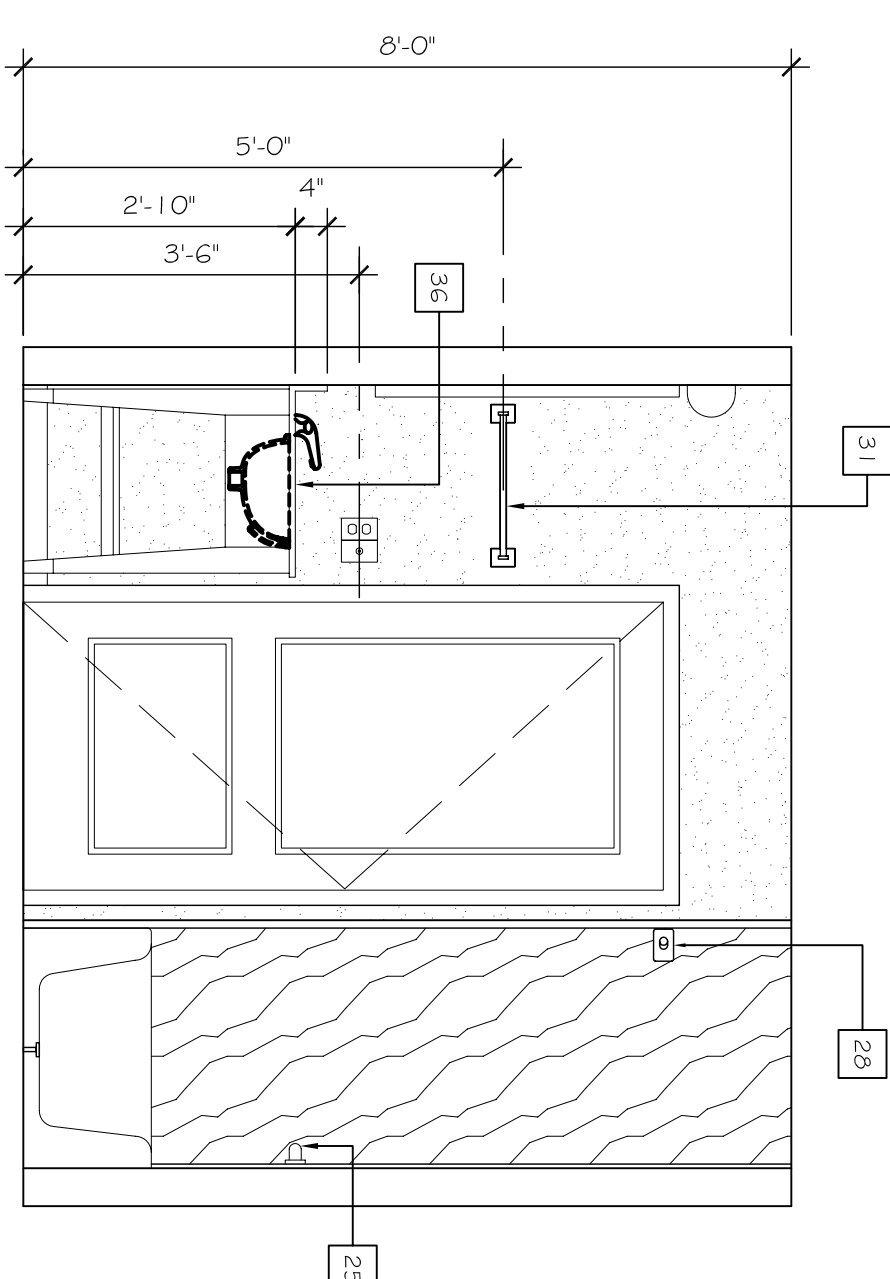
108 BATH ELEVATION
SCALE: 1/2" = 1'-0"



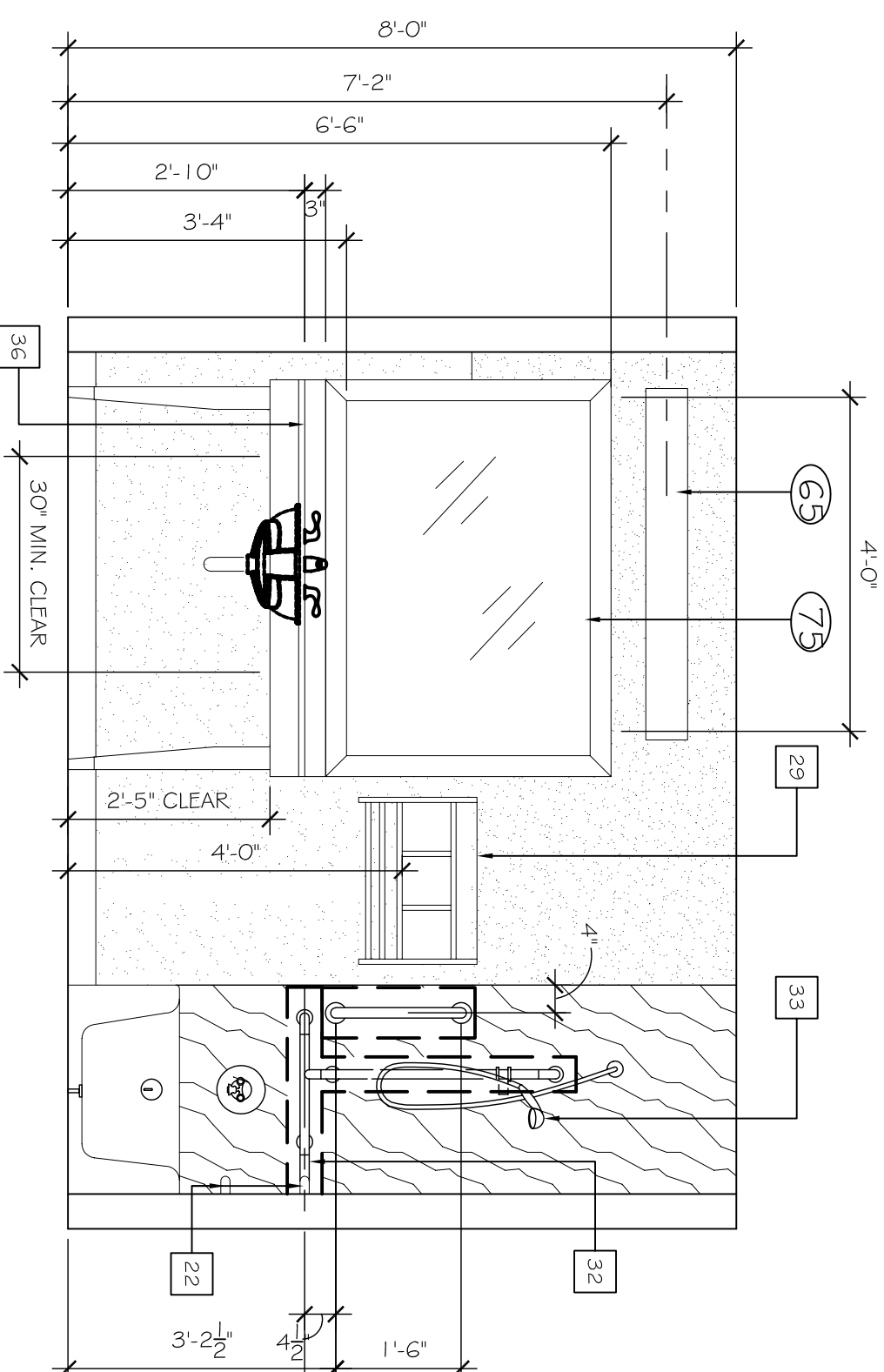
109 BATH ELEVATION
SCALE: 1/2" = 1'-0"



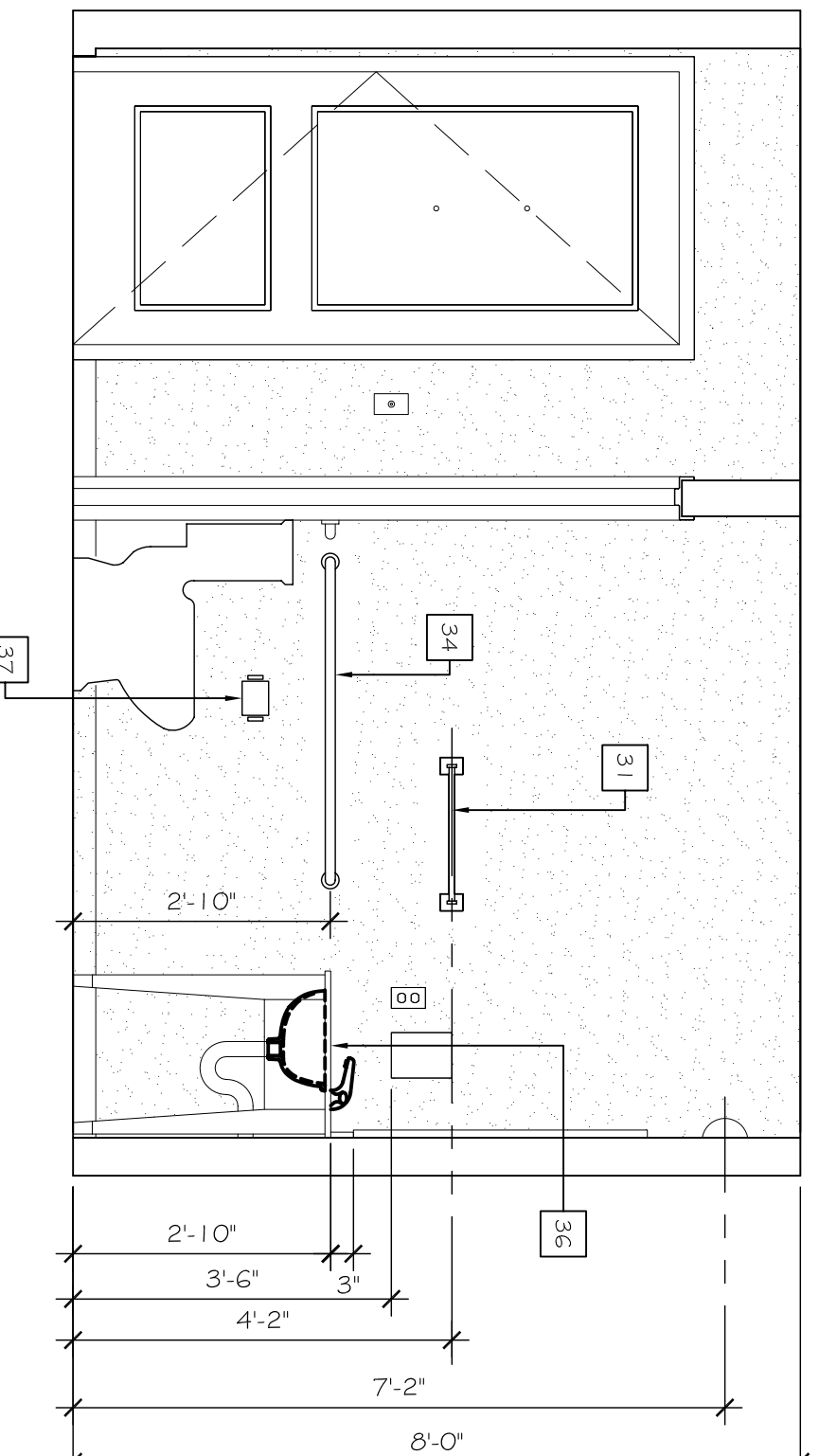
110 BATH ELEVATION
SCALE: 1/2" = 1'-0"



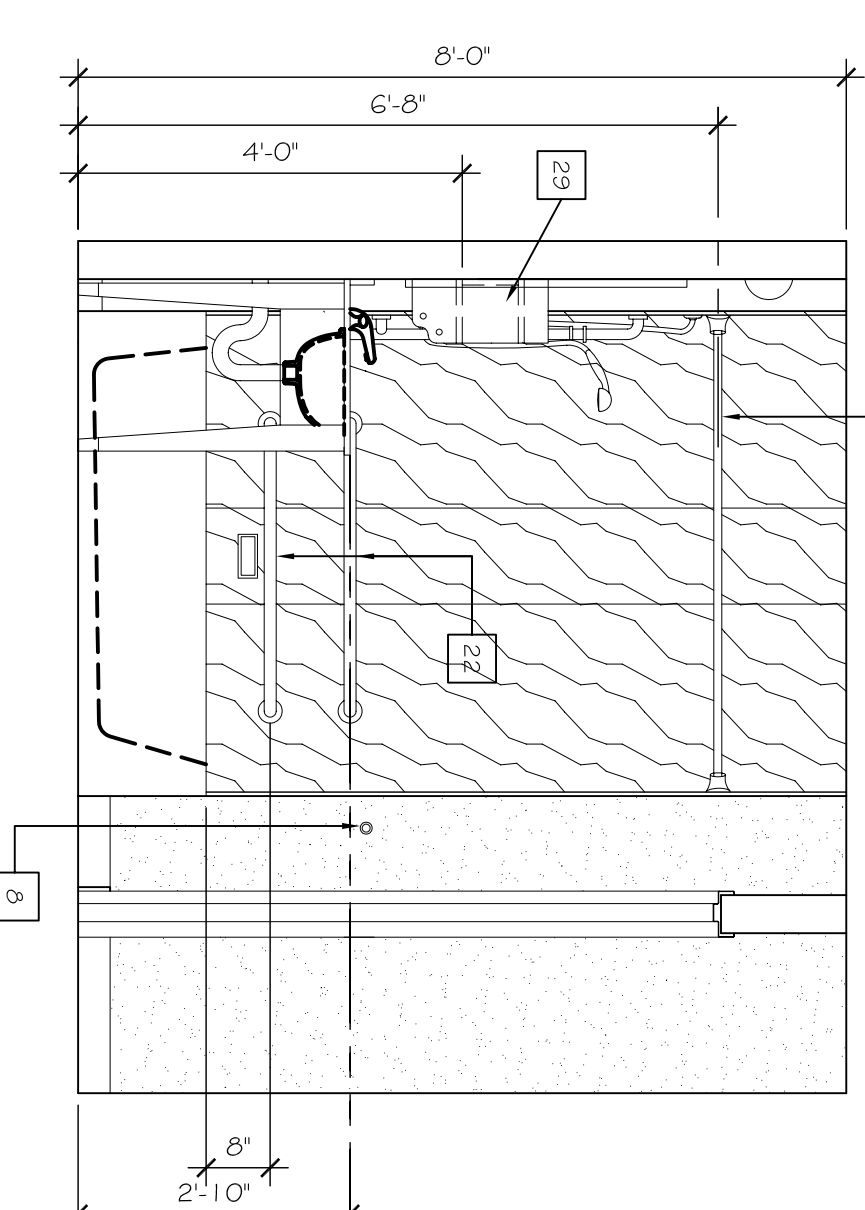
111 BATH ELEVATION
SCALE: 1/2" = 1'-0"



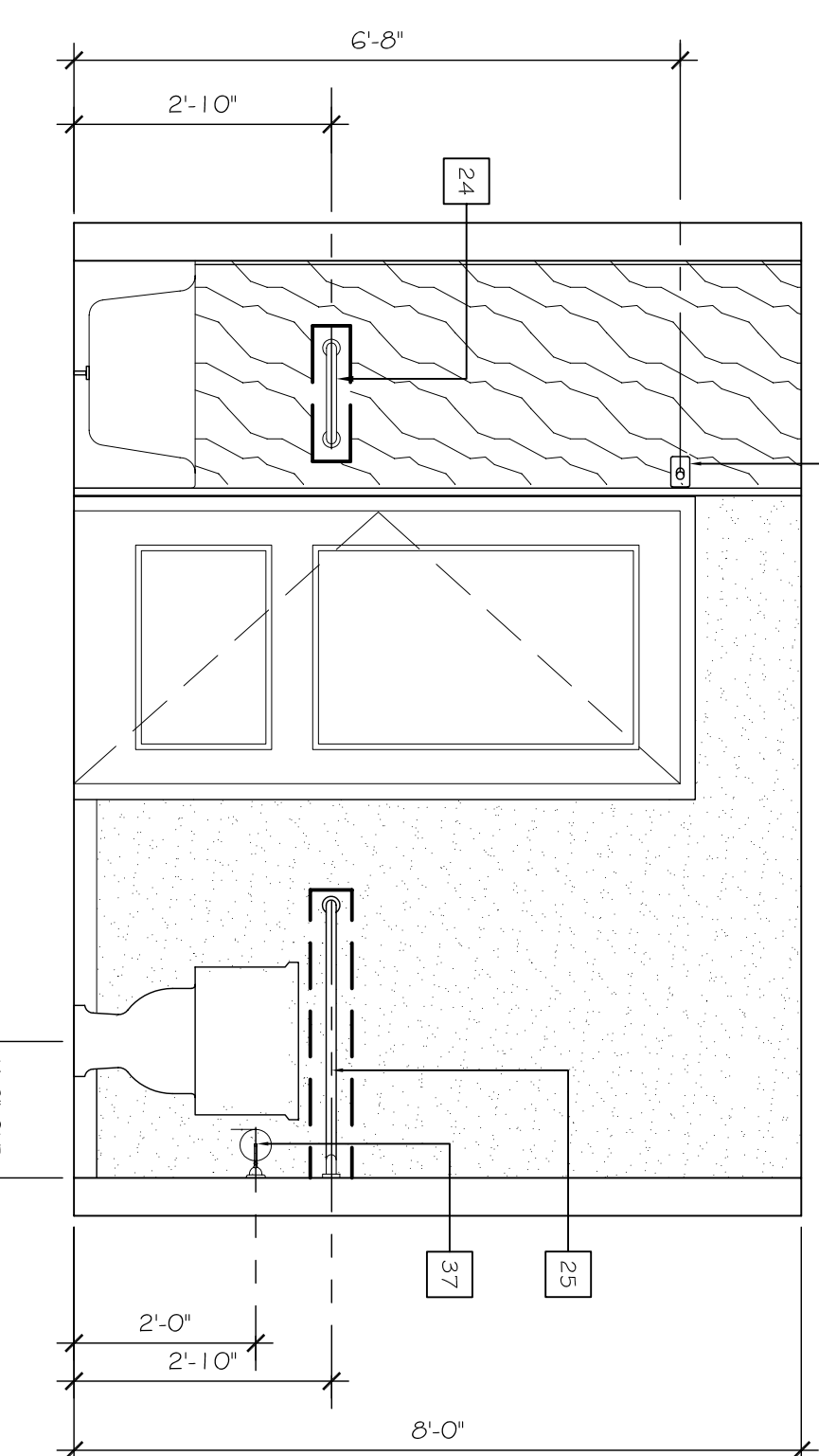
112 BATH ELEVATION
SCALE: 1/2" = 1'-0"



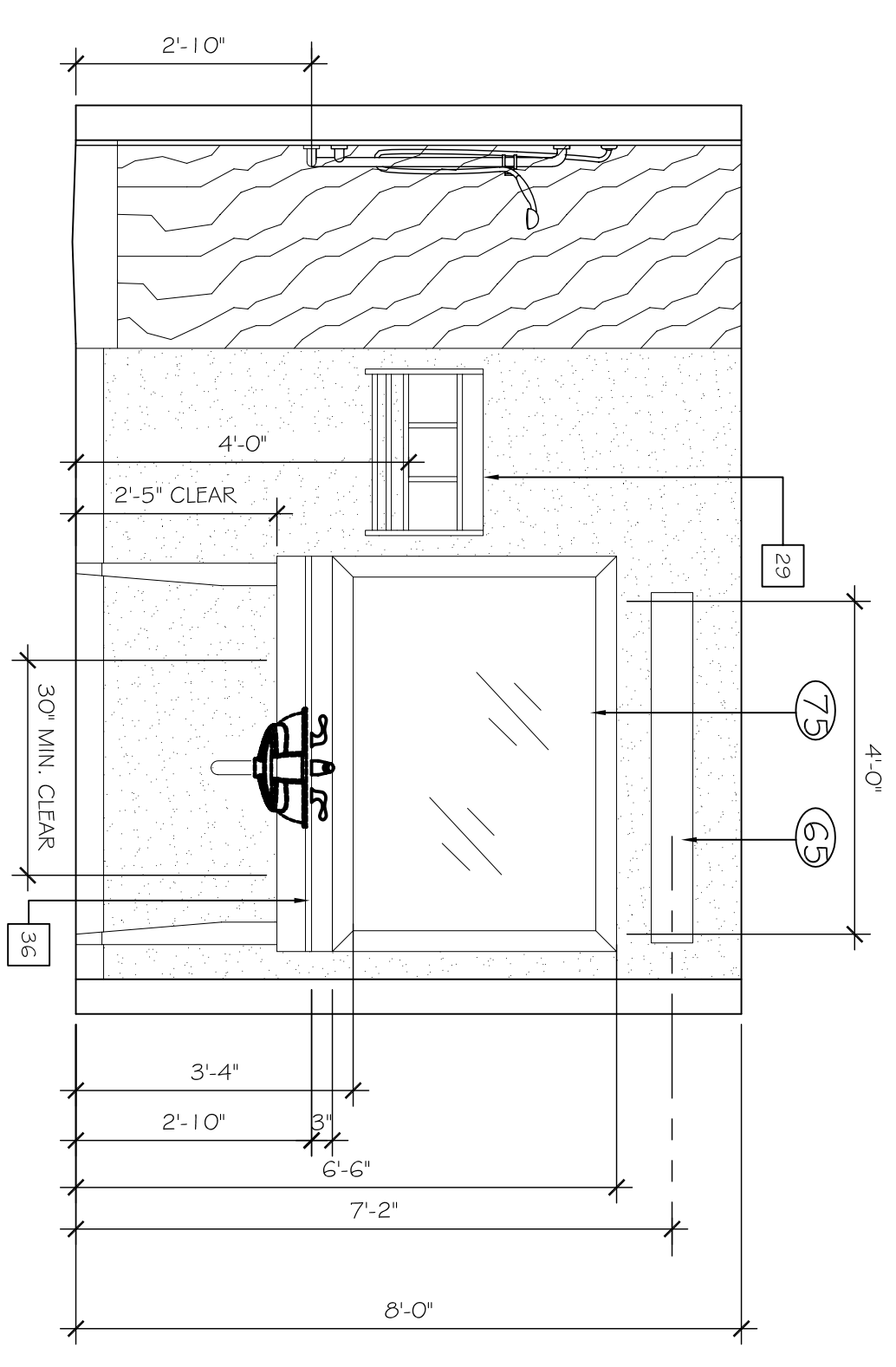
113 BATH ELEVATION
SCALE: 1/2" = 1'-0"



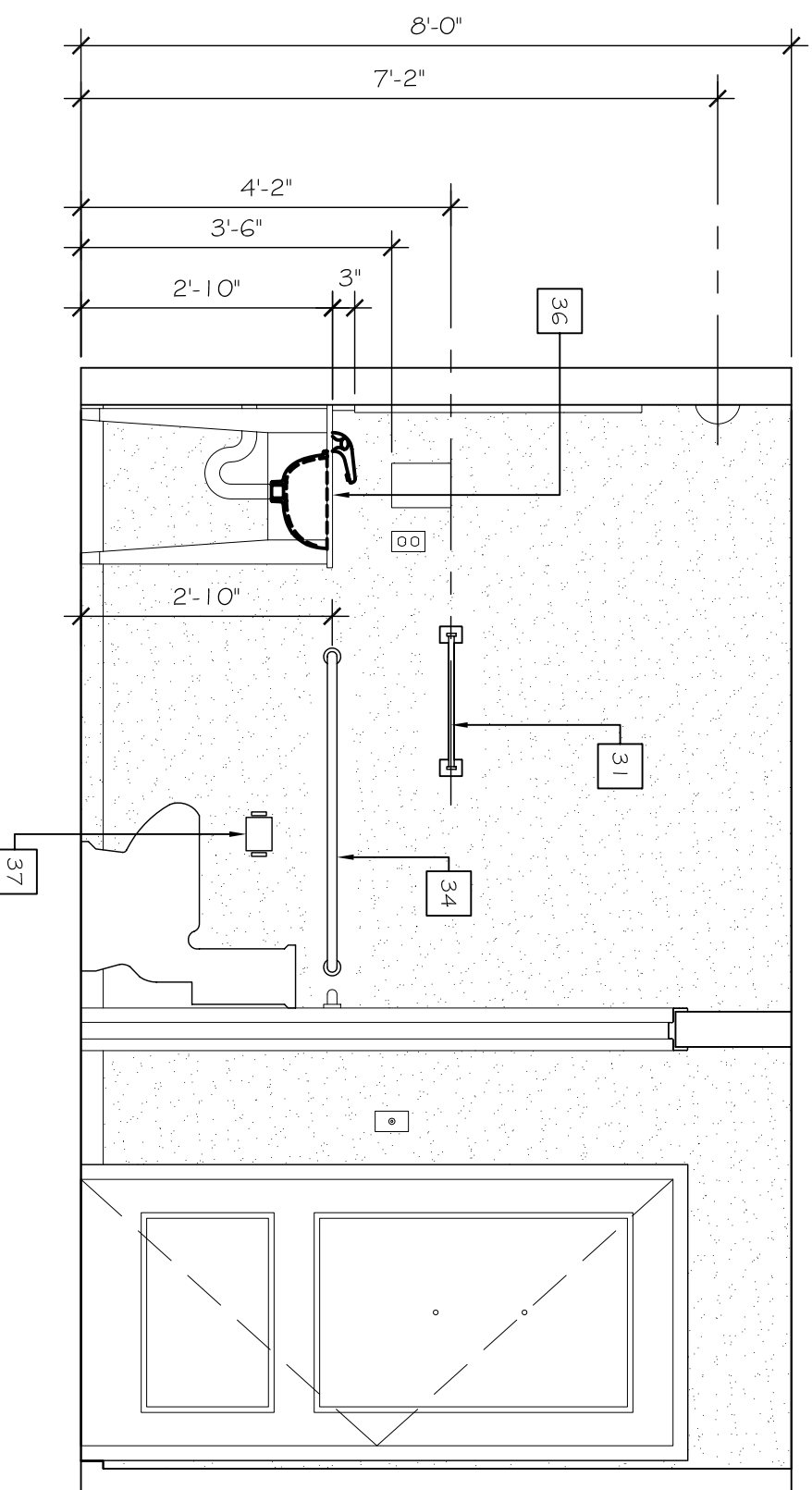
114 BATH ELEVATION
SCALE: 1/2" = 1'-0"



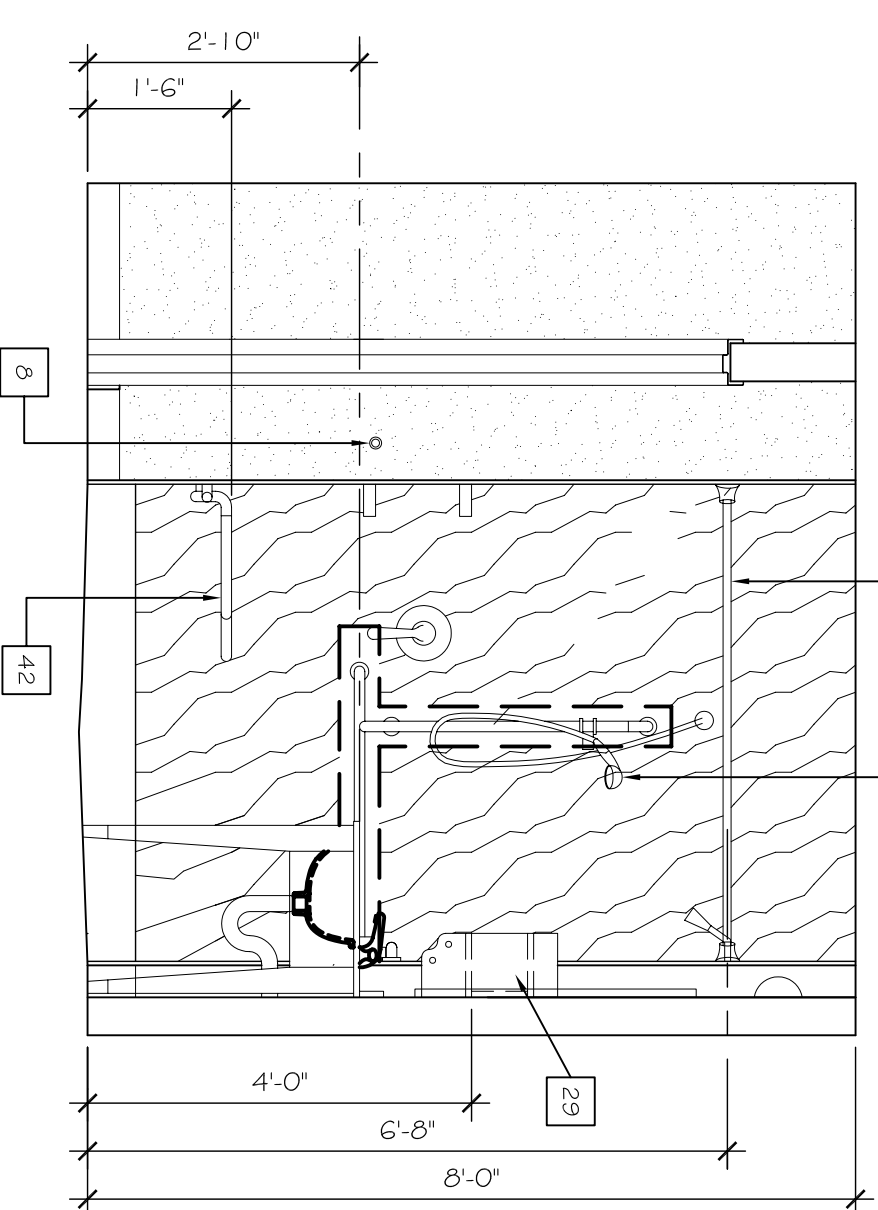
115 BATH ELEVATION
SCALE: 1/2" = 1'-0"



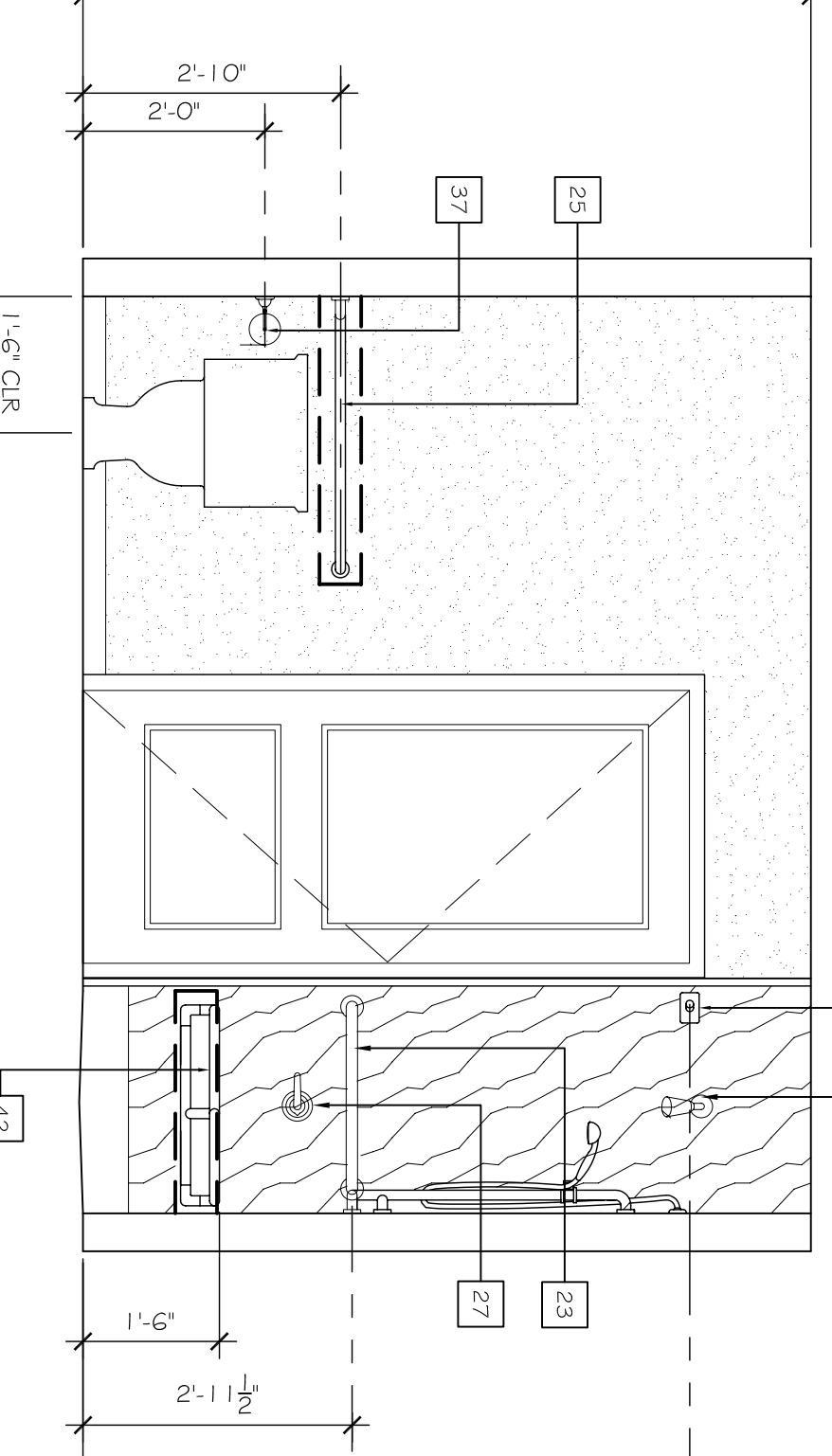
116 BATH ELEVATION
SCALE: 1/2" = 1'-0"



117 BATH ELEVATION
SCALE: 1/2" = 1'-0"



118 BATH ELEVATION
SCALE: 1/2" = 1'-0"



119 BATH ELEVATION
SCALE: 1/2" = 1'-0"

REFER DRAWING A410 FOR KENOTES
SEE F.F.E. SCHEDULE PER SELECTED INTERIOR DESIGN SCHEME.
REFER TO A.1.6 FOR PARTITION TYPES

GENERAL NOTES
1. ELECTRICAL OUTLETS IN ADJACENT ROOMS OF THE SAME TYPE SHALL BE OFFSET A MAXIMUM OF 8" & SEP. BY STUD.
2. REFER TO BUILDING PLANS FOR LOCATION OF GUEST ROOM TYPES
3. ALL PLAN DIMENSIONS ARE TO FACE OF STUD
REFERENCE FINISH SELECTION BOOK FOR PAINT AND MATERIAL LEGEND.

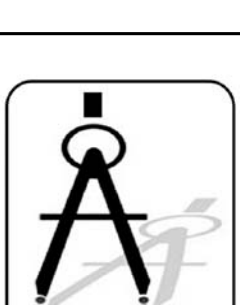
#	DESCRIPTION	DATE

LAQUINTA INNS & SUITES

507 CONSTITUTION DRIVE
WEST MONROE, LOUISIANA 71292

JOB No: 2196 DATE: 04-15-2014
DRAWN BY: JTL CHECKED BY: CKD

The above drawings and specifications, designs and arrangements represented hereby are and shall remain the property of Dammon Engineering, and no part thereof shall be copied, disposed to others, or used in connection with any work or project other than the specific project for which the same were prepared and developed without written consent of Dammon Engineering. Visual contact with these drawings or specifications shall constitute conclusive evidence of acceptance of these restrictions.



DAMMON
ENGINEERING, INC.
Architects & Engineers

CHIEF ENGINEER: BRIAN MISTICH, P.E.
CHIEF ARCHITECT: KEVIN KINCHEN
554 OLD SPANISH TRAIL
SLIDELL, LA 70458

dammonengineering.com
dammoneng@bellsouth.net
PHONE: 985-649-5832
FAX: 985-641-5990

GUESTROOM
BATH
INTERIOR
ELEVATIONS

SHEET No: 41 OF 53

A33