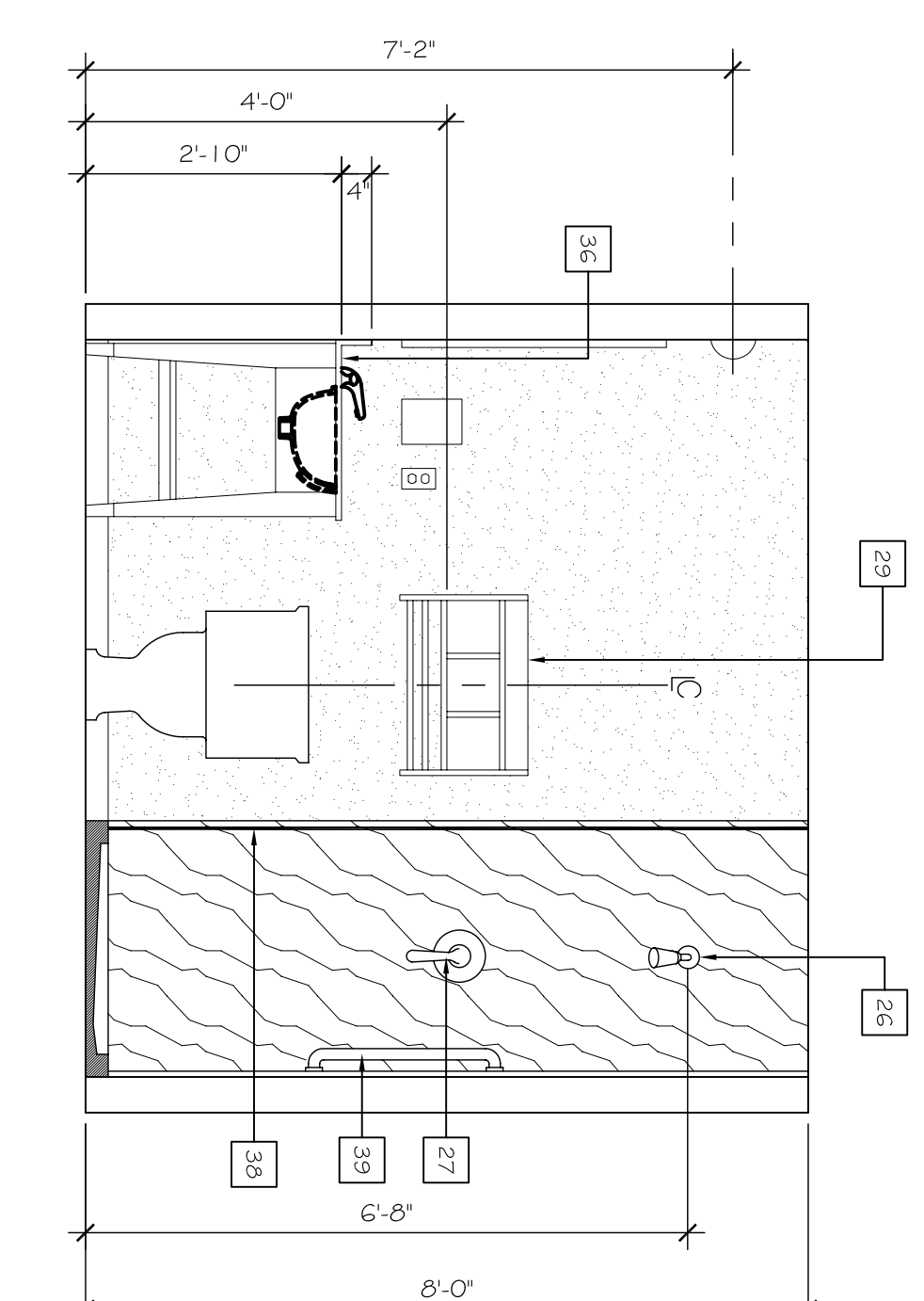
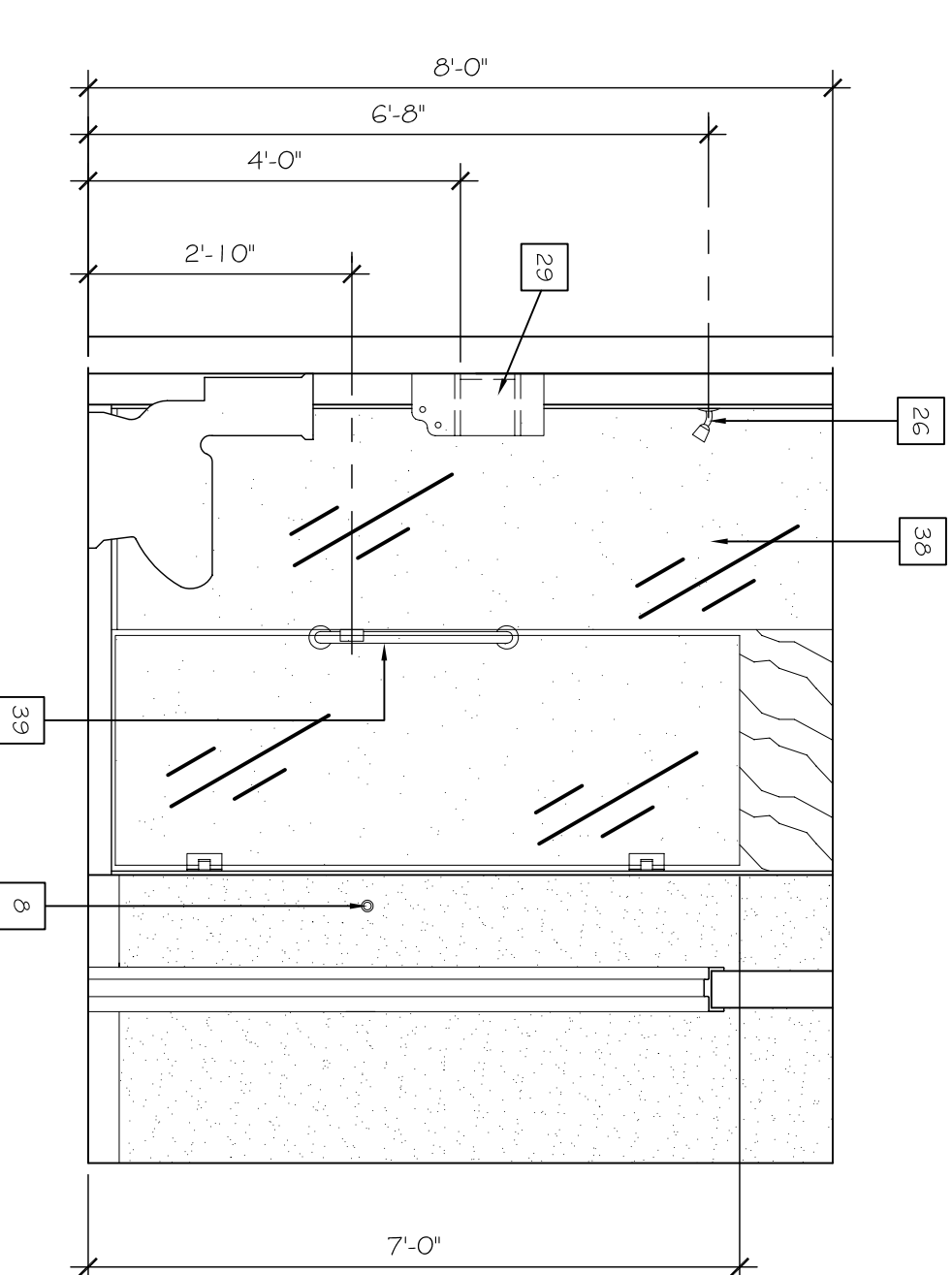


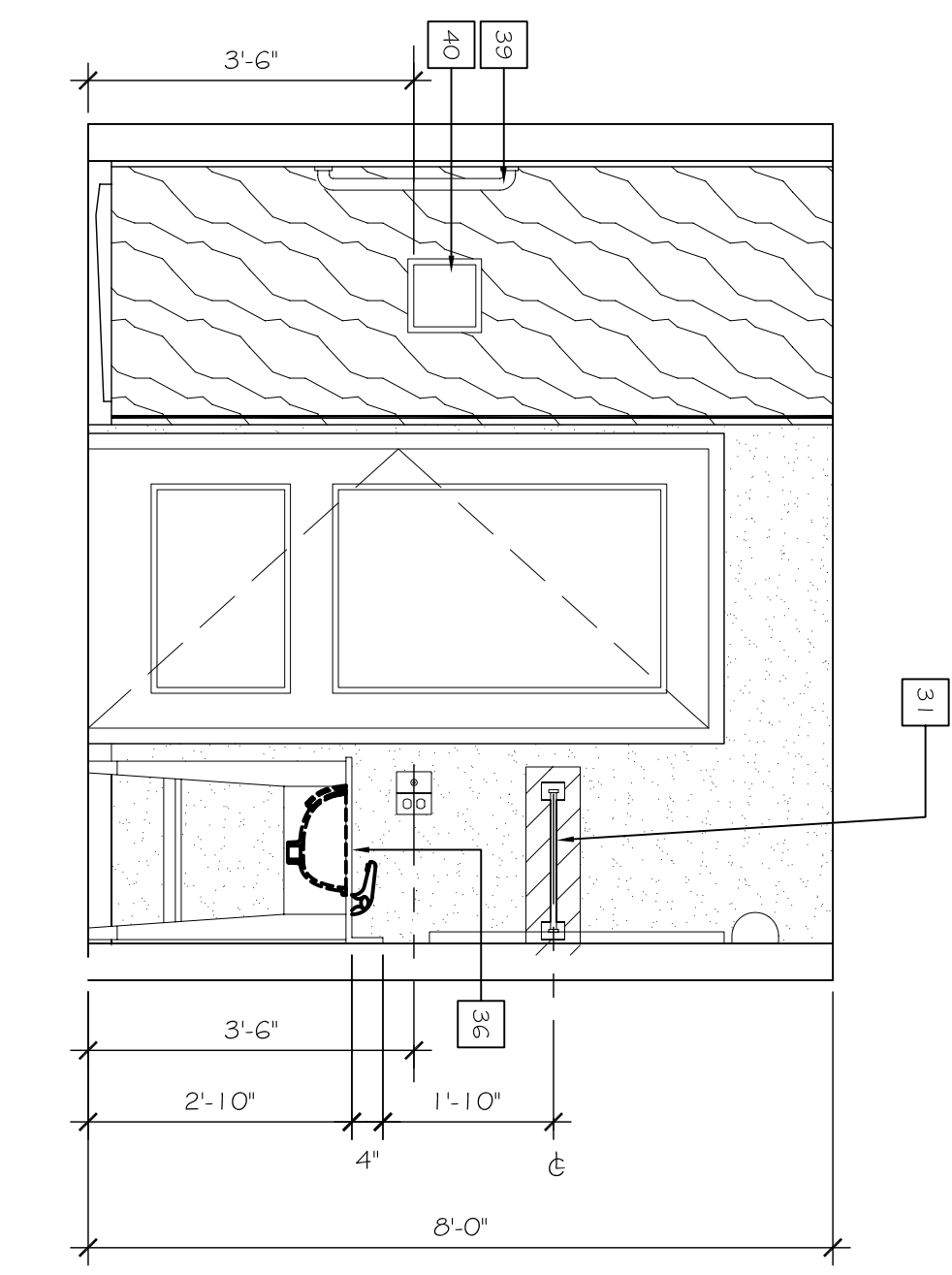
120 BATH ELEVATION
SCALE: 1/2" = 1'-0"



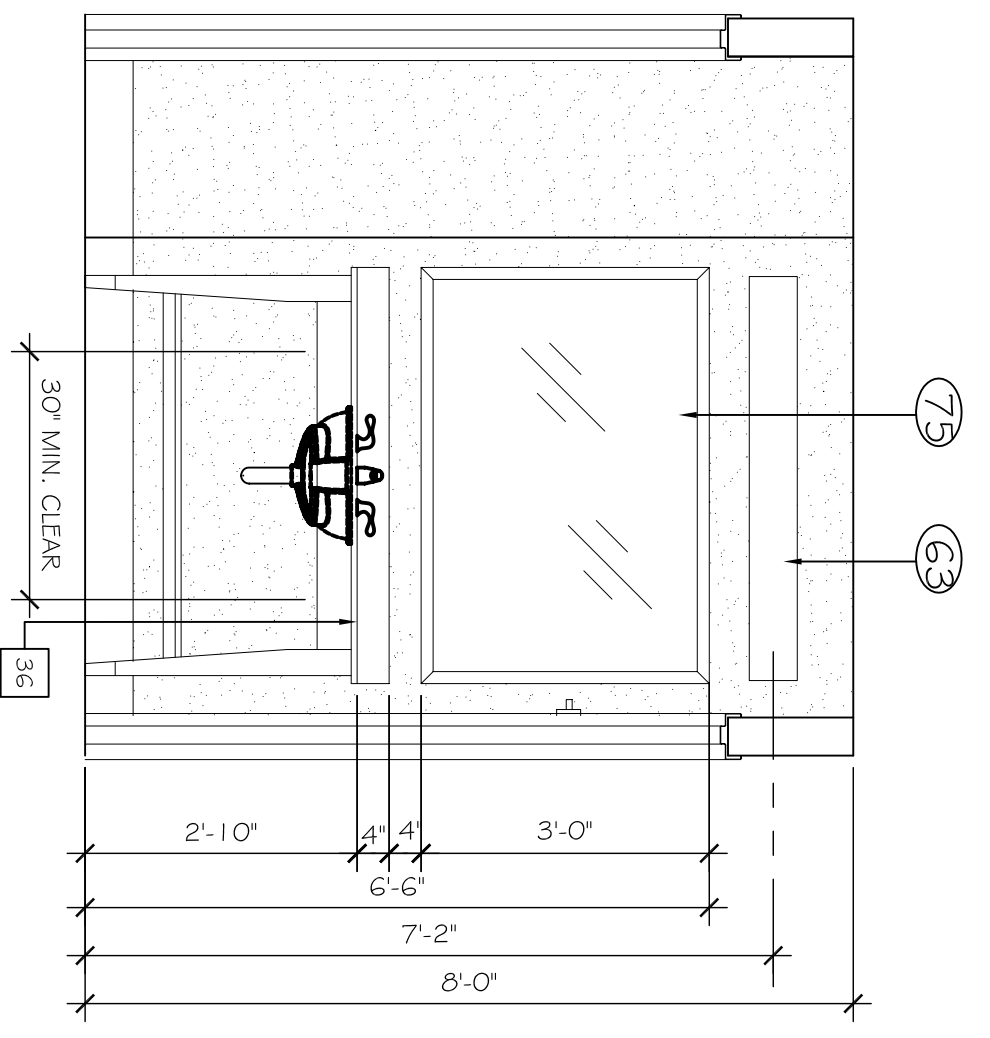
121 BATH ELEVATION
SCALE: 1/2" = 1'-0"



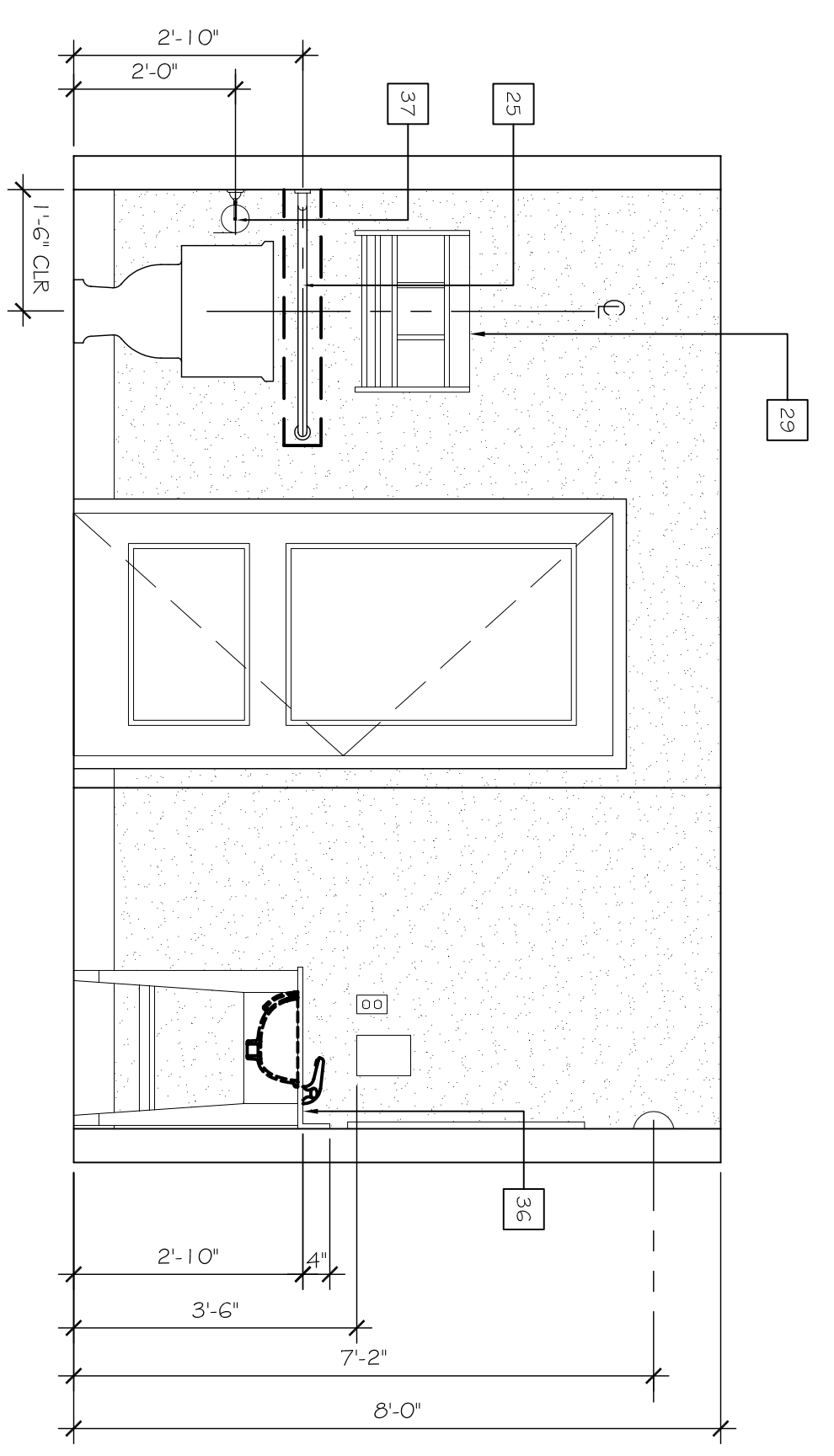
122 BATH ELEVATION
SCALE: 1/2" = 1'-0"



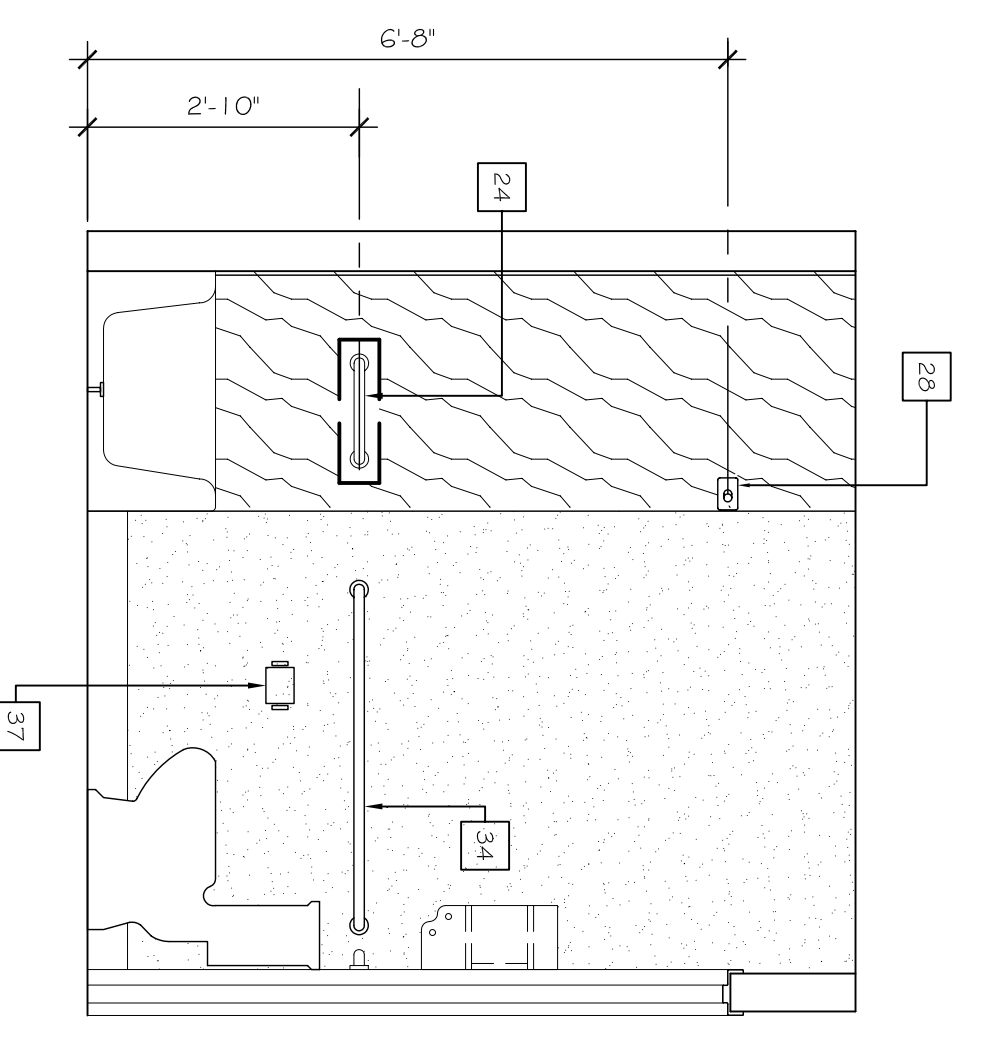
123 BATH ELEVATION
SCALE: 1/2" = 1'-0"



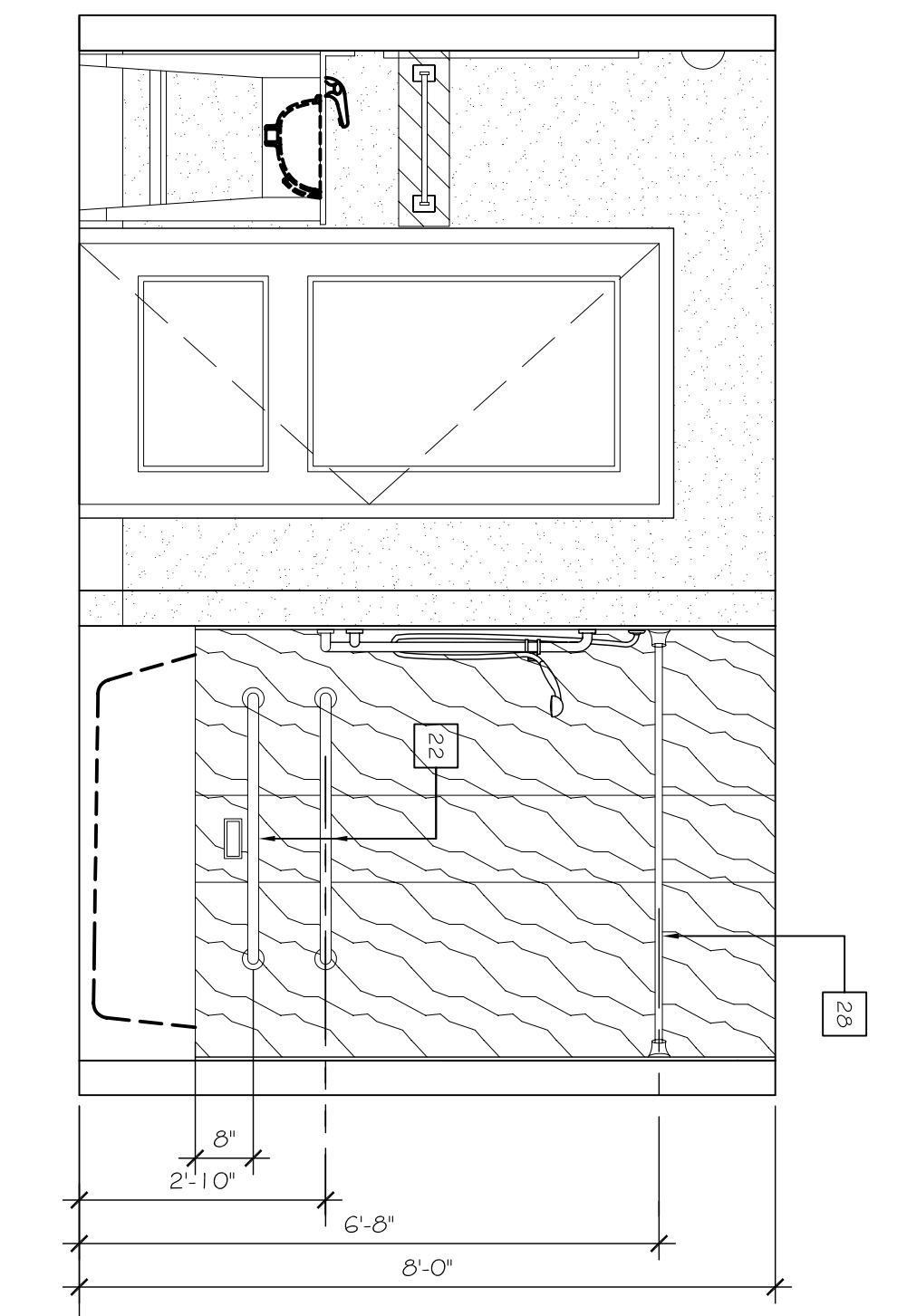
124 BATH ELEVATION
SCALE: 1/2" = 1'-0"



125 BATH ELEVATION
SCALE: 1/2" = 1'-0"



126 BATH ELEVATION
SCALE: 1/2" = 1'-0"



127 BATH ELEVATION
SCALE: 1/2" = 1'-0"

GENERAL NOTES

REFER DRAWING A410 FOR XX KEYNOTES
SEE F.F.E. SCHEDULE FOR SELECTED INTERIOR DESIGN SCHEME.
REFER TO A.1.6 FOR PARTITION TYPES

1. ELECTRICAL OUTLETS IN ADJACENT ROOMS OF THE SAME TYPE SHALL BE OFFSET A MAXIMUM OF 8" & SEP. BY STUD.
 2. REFERS TO BUILDING PLANS FOR LOCATION OF GUEST ROOM TYPES
 3. ALL PLAN DIMENSIONS ARE TO FACE OF STUD
- REFERENCE FINISH SELECTION BOOK PER SELECTED DESIGN SCHEME. (XX)

#	DESCRIPTION	REVISIONS	DATE

LAQUINTA INNS & SUITES
507 CONSTITUTION DRIVE
WEST MONROE, LOUISIANA 71292

JOB No: 2196 DATE: 04-15-2014
DRAWN BY: JTL CHECKED BY: CKD

The above drawings and specifications, designs and arrangements represented hereby are and shall remain the property of Dammon Engineering, Inc. and shall not be copied, reproduced or used in connection with any work or project other than the specific project for which they were prepared and developed without written consent of Dammon Engineering. Visual contact with these drawings or specifications shall constitute conclusive evidence of acceptance of these instructions.

DAMMON ENGINEERING, INC.
Architects & Engineers

CHIEF ENGINEER: BRIAN MISTICH, P.E.
CHIEF ARCHITECT: KEVIN KINCHEN
554 OLD SPANISH TRAIL
SLIDELL, LA 70458

dammonengineering.com
dammoneng@bellsouth.net
PHONE: 985-649-5832
FAX: 985-641-5950

GUESTROOM
BATH
INTERIOR
ELEVATIONS

SHEET No: 42 OF 53

A34