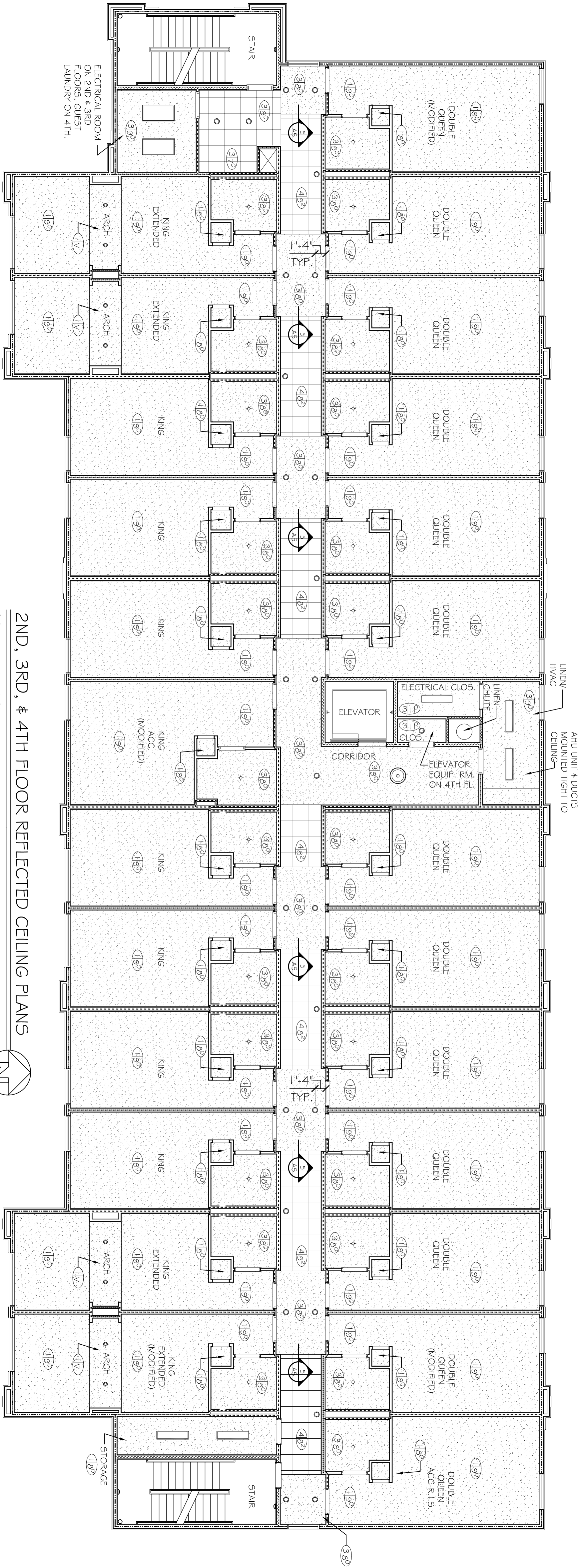


FIRST FLOOR REFLECTED CEILING PLAN  
SCALE: 1/8" = 1'-0"

CEILING TYPE LEGEND	
1	INTERIOR TEXTURE COATING OVER SUSPENDED/FURRED GYPSUM BOARD
2	EXTERIOR TEXTURE COATING OVER SUSPENDED/FURRED GYPSUM BOARD
3	SUSPENDED/FURRED GYPSUM BOARD - PAINT
4	SUSPENDED CEILING TILE 2'x2'
5	SUSPENDED CEILING TILE 2'x4' TILE TO COMPLY WITH HEALTH CODE

CEILING SYMBOL LEGEND	
(4'-2)	CEILING TYPE/ CEILING HEIGHT
V=VARIES	
[Symbol]	SUSPENDED CEILING TILE 2'x4'
[Symbol]	SUSPENDED CEILING TILE 2'x2'
[Symbol]	5/8" GYPSUM BOARD CEILING
[Symbol]	SUPPLY AIR CEILING DIFFUSER
[Symbol]	RETURN AIR CEILING DIFFUSER
[Symbol]	RE: MECHANICAL
[Symbol]	LINEAR DIFFUSER
[Symbol]	RE: MECHANICAL
[Symbol]	EXHAUST FAN REGISTER
[Symbol]	RE: MECHANICAL

- NOTES
1. REFER TO SHEETS E1 & E2 FOR LIGHTING FIXTURES.
  2. REFER ENLARGED GUEST ROOM PLAN SHEETS FOR GUESTROOM LIGHTING FIXTURES.
  3. REFER PROTOTYPE FINISH MATERIAL LIST FROM STANDARDS INFORMATION PACKAGE FOR CEILING PAINT DETAILS.
  4. INSTALL FIRE RATED SUB CEILING AS MAY BE REQUIRED BY LOCAL CODES.



2ND, 3RD, & 4TH FLOOR REFLECTED CEILING PLANS  
SCALE: 1/8" = 1'-0"

REVISIONS		
#	DESCRIPTION	DATE

LAQUINTA INNS & SUITES	
507 CONSTITUTION DRIVE WEST MONROE, LOUISIANA 71292	
JOB No: 2196	DATE: 04-15-2014
DRAWN BY: JTL	CHECKED BY: CKD

**DAMMON**  
ENGINEERING, INC.  
*Architects & Engineers*

CHIEF ENGINEER, BRIAN MISTICH, P.E.  
CHIEF ARCHITECT, KEVIN KINCHEN  
554 OLD SPANISH TRAIL  
SLIDELL, LA 70458

dammonengineering.com  
dammoneng@bellsouth.net  
PHONE: 985-649-5832  
FAX: 985-641-5990