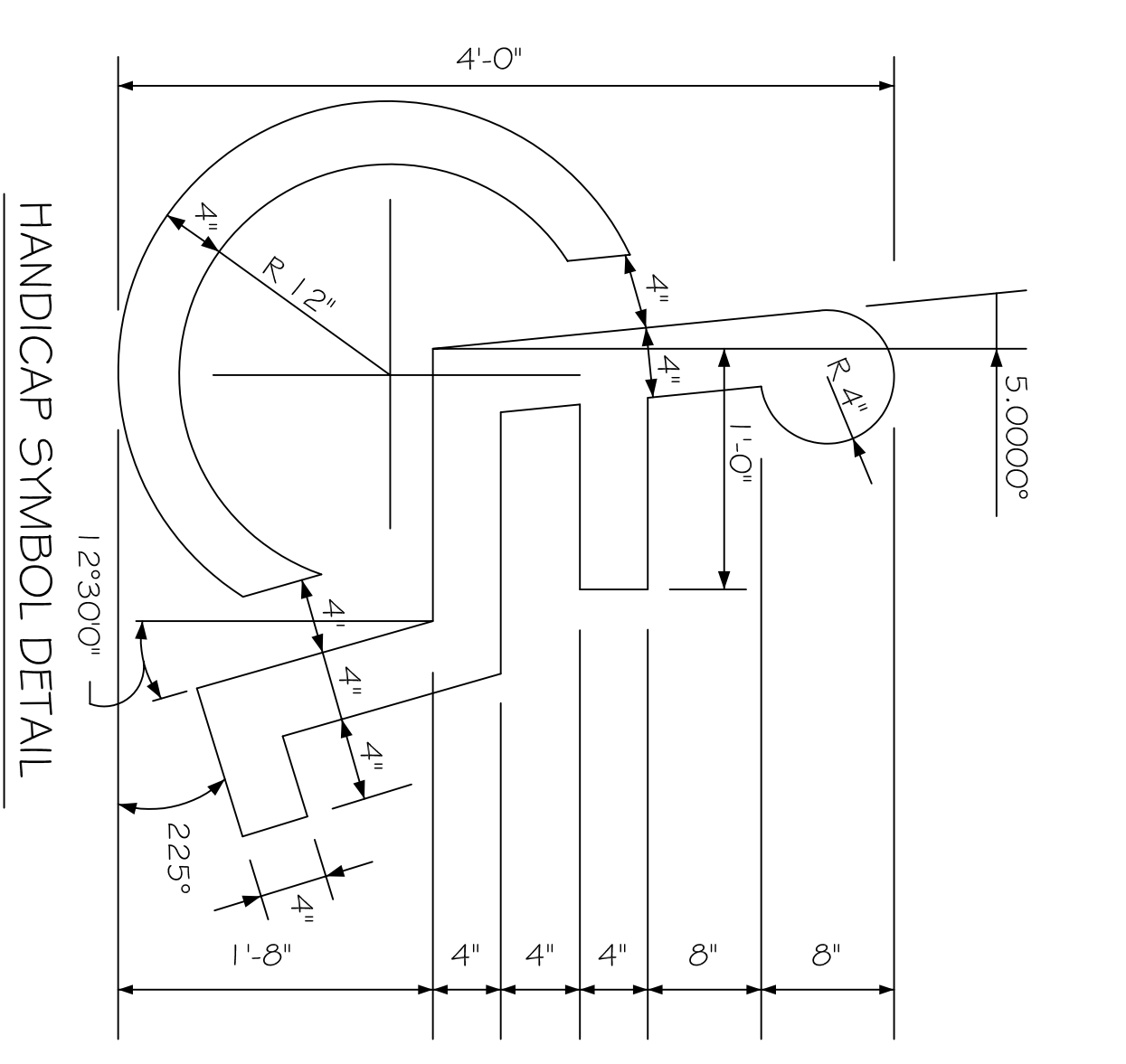
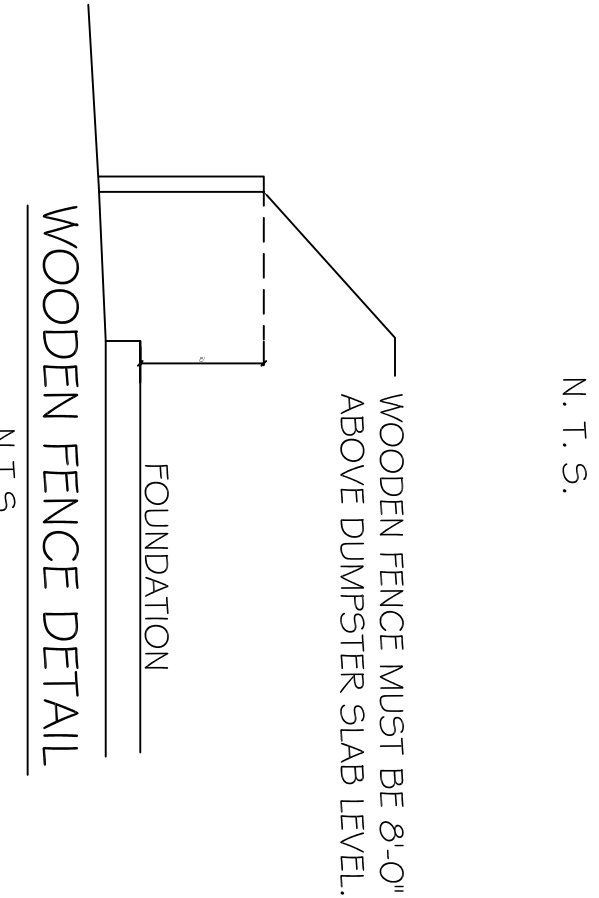
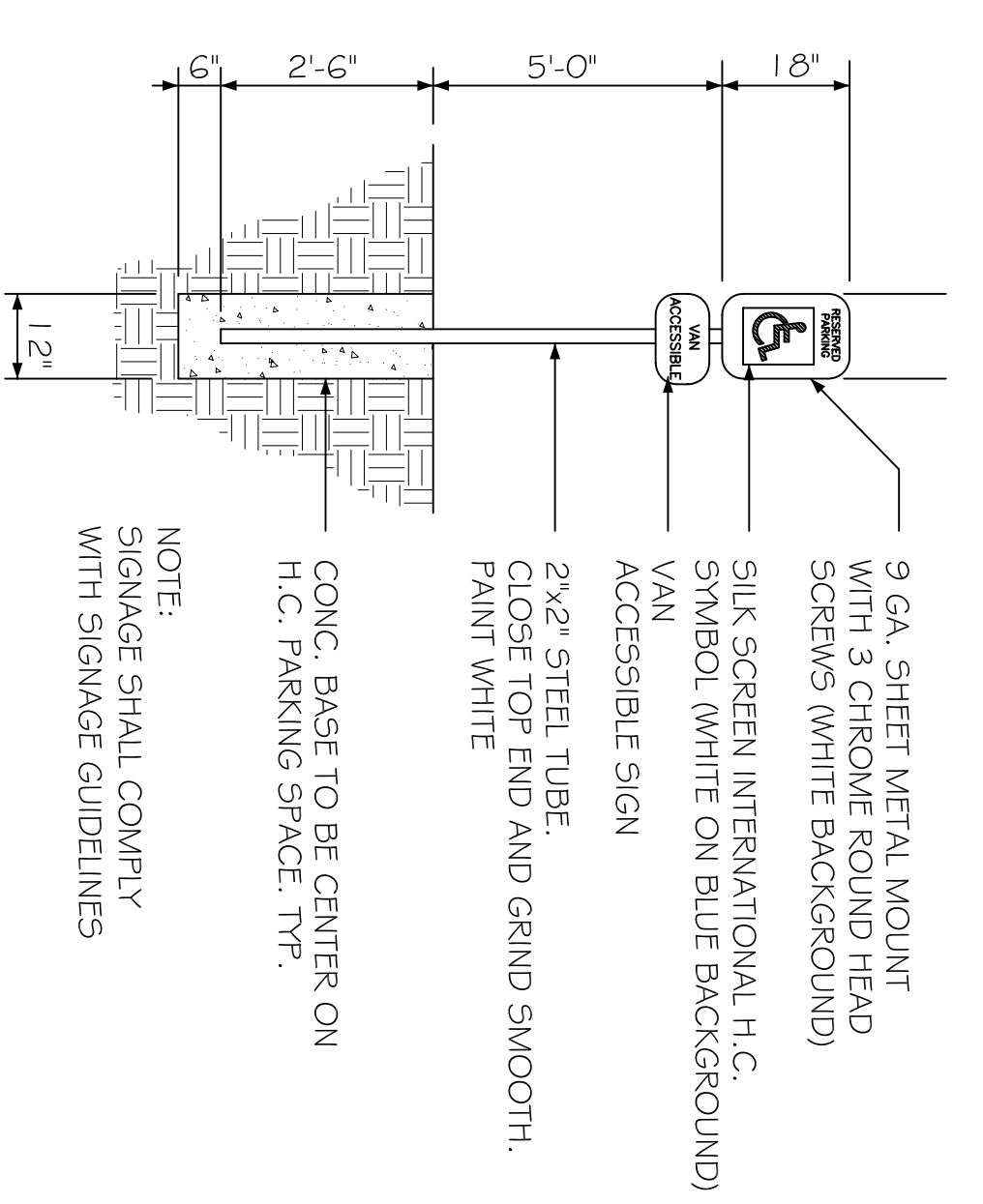
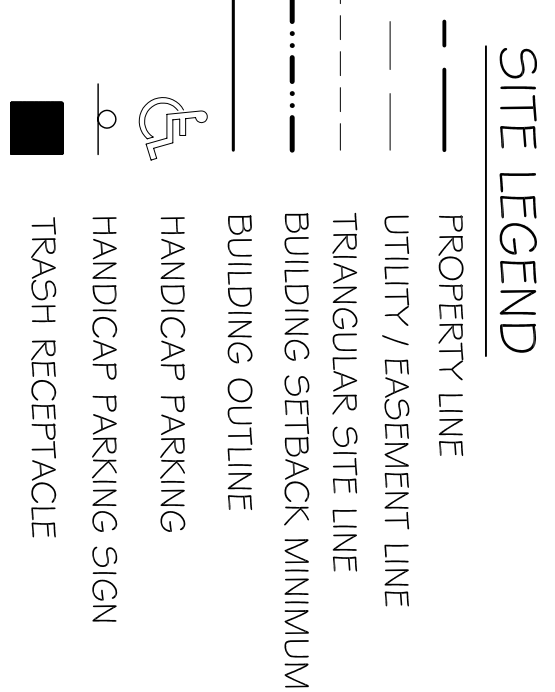


Lot 1
 (Extension No. 2)
 Existing Hooters
 Restaurant

PARKING REQUIREMENTS:
 1 SPACE PER GUESTROOM REQUIRED,
 63 GUESTROOMS x 1 = 63 SPACES
 TOTAL SPACES NEEDED, 92 PROVIDED.

- ALL SIDEWALKS INTERSECTING A ROADWAY SHALL BE SLOPED
 @ 1:12 AND HAVE A DETECTABLE WARNING SYSTEM (CAST IN
 PLACE)



SITE PLAN
 SCALE: 1"=20'-0"

SHEET NO: 02 OF 53
 C1
 SITE PLAN

#	DESCRIPTION	DATE

LAQUINTA INNS & SUITES
 507 CONSTITUTION DRIVE
 WEST MONROE, LOUISIANA 71292

JOB NO: 2196 DATE: 04-15-2014
 DRAWN BY: JTL CHECKED BY: CKD

DAMMON
 ENGINEERING, INC.
 Architects & Engineers

CHIEF ENGINEER: BRIAN MISTICH, P.E.
 CHIEF ARCHITECT: KEVIN KINCHEN
 554 OLD SPANISH TRAIL
 SLIDELL, LA 70458

dammoneengineering.com
 dammoneng@bellsouth.net
 PHONE: 985-649-5832
 FAX: 985-641-5990