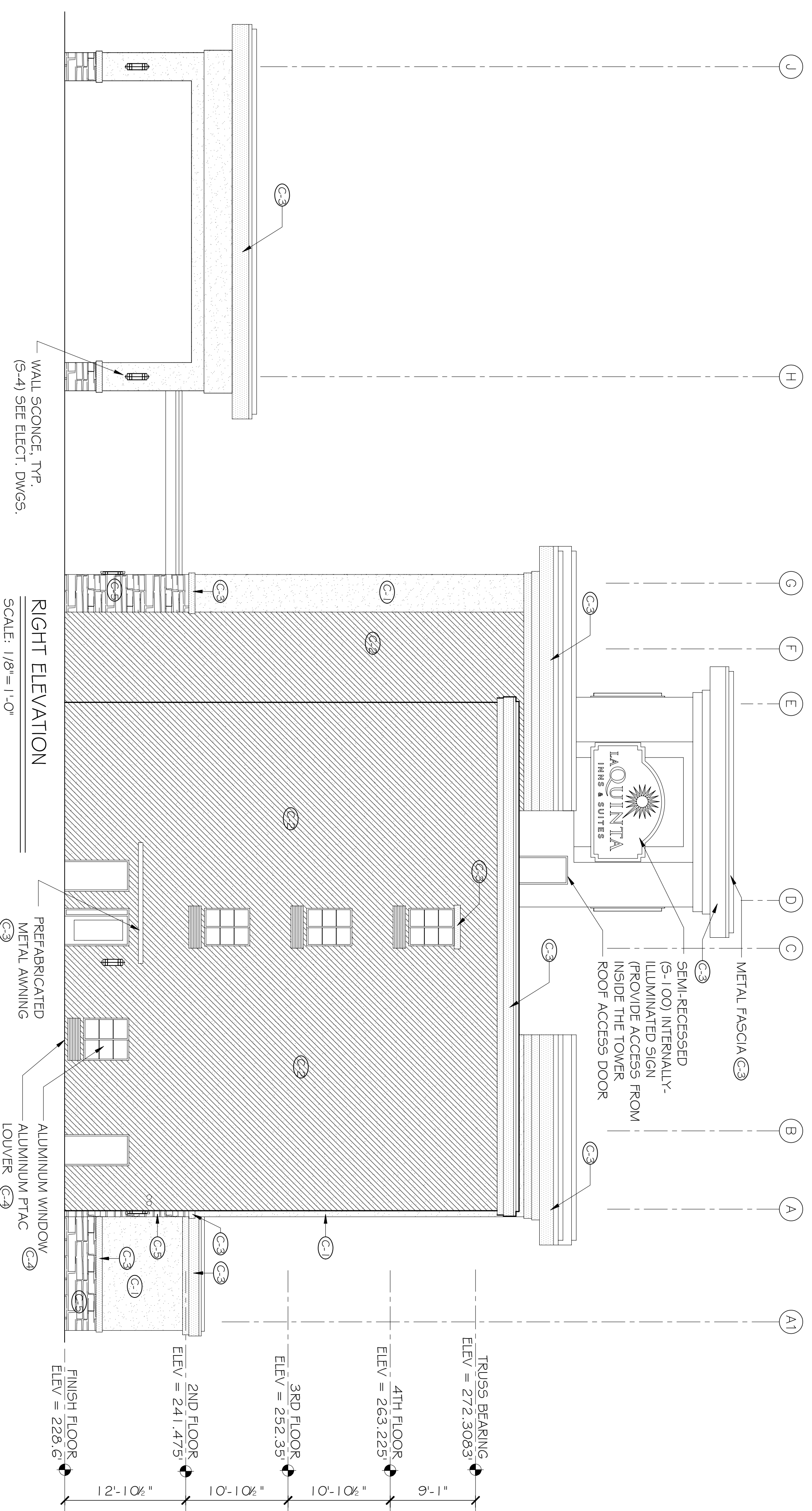


LEFT ELEVATION
SCALE: 1/8" = 1'-0"



RIGHT ELEVATION
SCALE: 1/8" = 1'-0"

COLOR SCHEDULE	
(C-1)	EIFS (FINE SAND TEXTURE) SW-6387 - COMPATIBLE CREAM
(C-2)	EIFS (FINE SAND TEXTURE) SW-6374 - TORCHLIGHT
(C-3)	EIFS (LIMESTONE TEXTURE) PAINTED METAL AWNINGS, AND PREFAB. BALCONY SW-0055 - LIGHT FRENCH GRAY
(C-4)	ALUMINIUM (WINDOWS, STOREFRONT, # PTAC GRILLS) - WHITE
(C-5)	"MOUNTAIN STONE" MASONRY VENEER BY ELDORADO STONE CO.

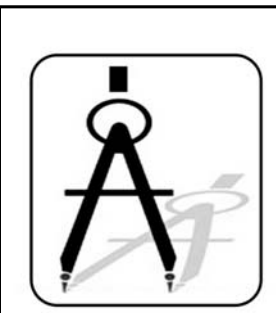
PRELIMINARY (NOT FOR CONSTRUCTION)

REVISIONS		
#	DESCRIPTION	DATE

LAQUINTA INNS & SUITES

WEST MONROE, LOUISIANA
JOB No: 2196 DATE: 12-12-2013
DRAWN BY: JTL CHECKED BY: CKD

The above drawings and specifications, designs and arrangements represented hereby and shall remain the property of Dammon Engineering, and no part thereof shall be copied, abstracted or other use in connection with any work or project other than the specific project for which they have been prepared and developed without written consent of Dammon Engineering. Visual contact with these drawings or specifications shall constitute conclusive evidence of acceptance of these restrictions.



DAMMON
ENGINEERING, INC.
Architects & Engineers

CHIEF ENGINEER: BRIAN MISTICH, P.E.
CHIEF ARCHITECT: KEVIN KINCHEN
554 OLD SPANISH TRAIL
SLIDELL, LA 70458

dammonengineering.com
dammoneng@bellsouth.net
PHONE: 985-649-5832
FAX: 985-641-5950

LEFT & RIGHT SIDE EXTERIOR ELEVATIONS

SHEET No: 00 OF 00

AS