

KEYNOTES BY SYMBOL (X)

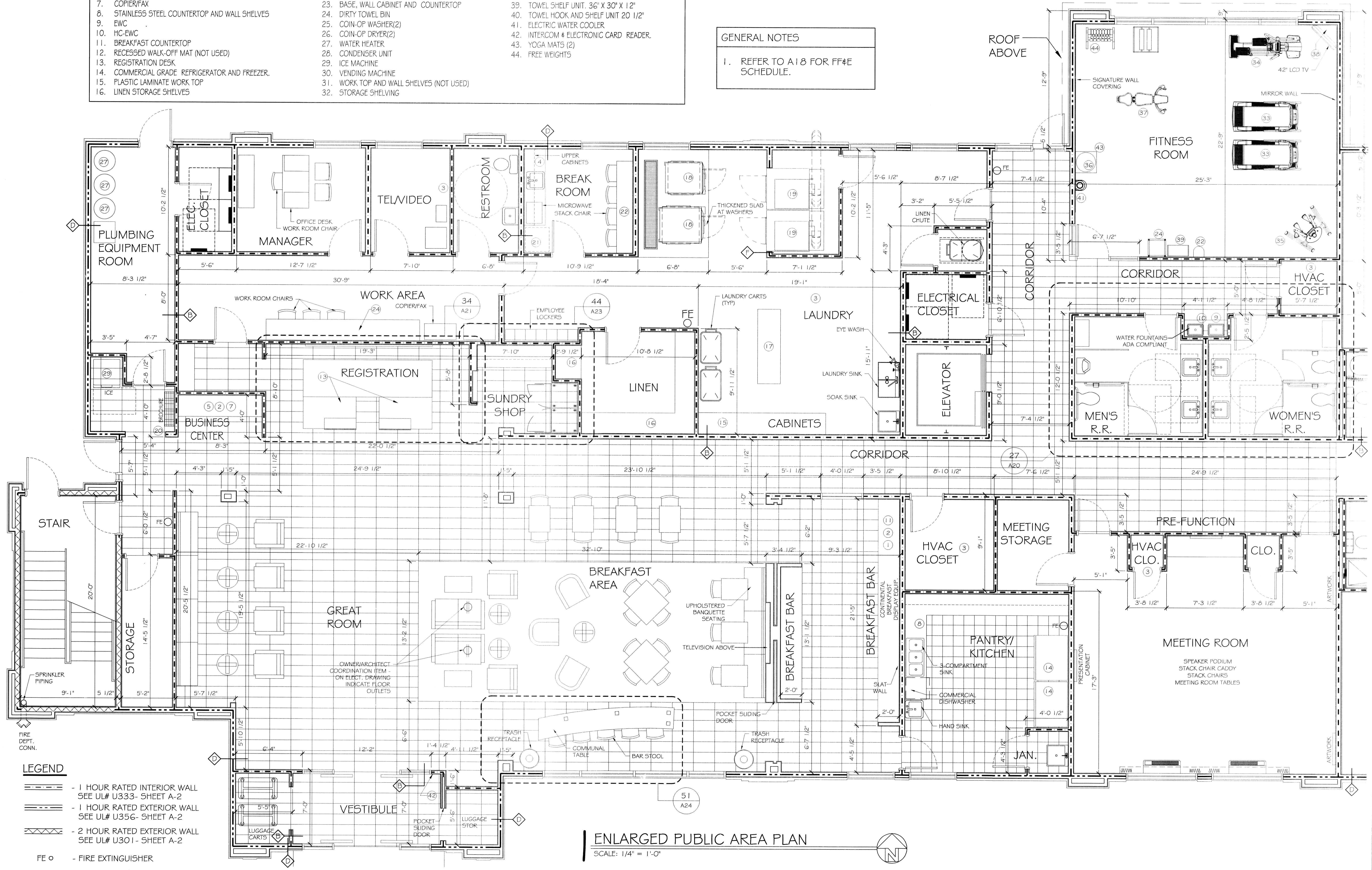
- | | | |
|--|--|--|
| 1. BASE CABINET | 17. LAUNDRY TABLE | 33. EXERCISE TREADMILL |
| 2. STONE COUNTERTOP | 18. WASHERS (2) | 34. ELLIPTICAL |
| 3. HVAC UNIT (SEE MECHANICAL PLAN) | 19. DRYERS (2) | 35. WEIGHT MACHINE |
| 4. PLASTIC LAMINATE COUNTERTOP AND BACKSPLASH | 20. BROCHURE RACK | 36. WEIGHT BALLS |
| 5. COMPUTER KEYBOARD DRAWER/TRAY | 21. REFRIGERATOR | 37. WEIGHT BENCH |
| 6. NOT USED | 22. SANITARY WIPE DISPENSER | 38. WALL MOUNTING BRACKET FOR TV |
| 7. COPIER/FAX | 23. BASE, WALL CABINET AND COUNTERTOP | 39. TOWEL SHELF UNIT, 36" X 30" X 1 1/2" |
| 8. STAINLESS STEEL COUNTERTOP AND WALL SHELVES | 24. DIRTY TOWEL BIN | 40. TOWEL HOOK AND SHELF UNIT 20 1/2" |
| 9. EWC | 25. COIN-OP WASHER(2) | 41. ELECTRIC WATER COOLER |
| 10. HC-EWC | 26. COIN-OP DRYER(2) | 42. INTERCOM & ELECTRONIC CARD READER |
| 11. BREAKFAST COUNTERTOP | 27. WATER HEATER | 43. YOGA MATS (2) |
| 12. RECESSED WALK-OFF MAT (NOT USED) | 28. CONDENSER UNIT | 44. FREE WEIGHTS |
| 13. REGISTRATION DESK | 29. ICE MACHINE | |
| 14. COMMERCIAL GRADE REFRIGERATOR AND FREEZER | 30. VENDING MACHINE | |
| 15. PLASTIC LAMINATE WORK TOP | 31. WORK TOP AND WALL SHELVES (NOT USED) | |
| 16. LINEN STORAGE SHELVES | 32. STORAGE SHELVING | |

KEYNOTES BY SYMBOL (X)

• REFER TO SHEET A16 FOR •
WALL TYPE DESCRIPTIONS

GENERAL NOTES

1. REFER TO A18 FOR FF&E SCHEDULE.



- LEGEND**
- 1 HOUR RATED INTERIOR WALL
SEE UL# U333- SHEET A-2
 - 1 HOUR RATED EXTERIOR WALL
SEE UL# U356- SHEET A-2
 - 2 HOUR RATED EXTERIOR WALL
SEE UL# U301- SHEET A-2
 - FE ○ - FIRE EXTINGUISHER

ENLARGED PUBLIC AREA PLAN
SCALE: 1/4" = 1'-0"

