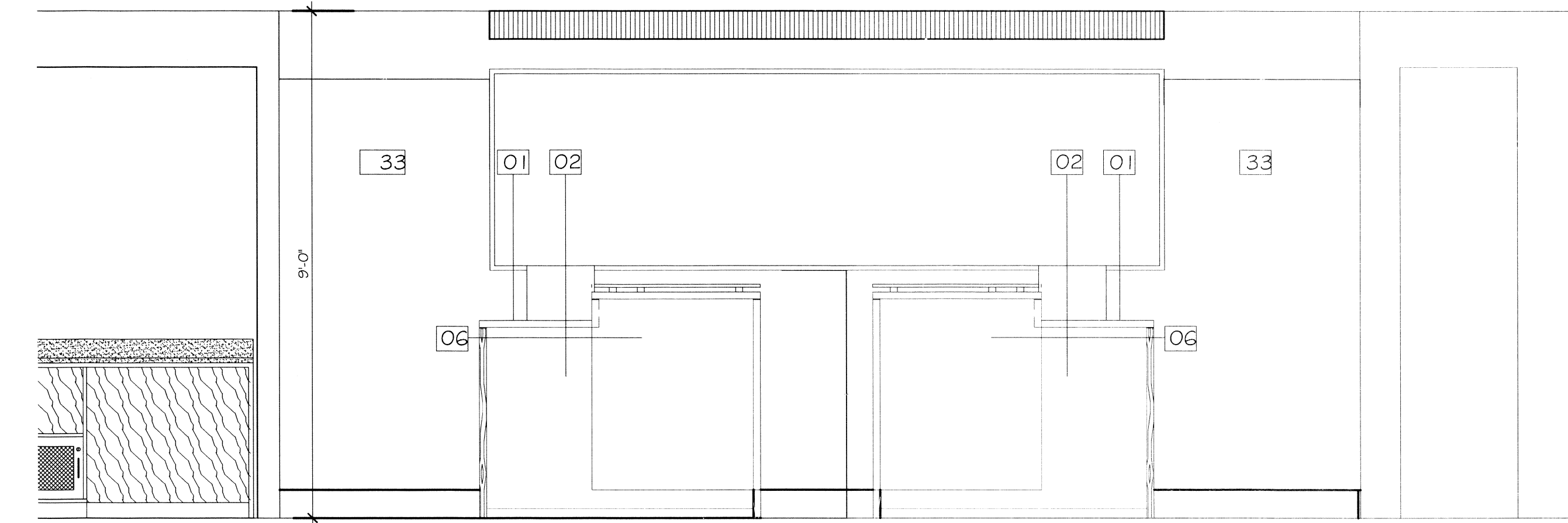
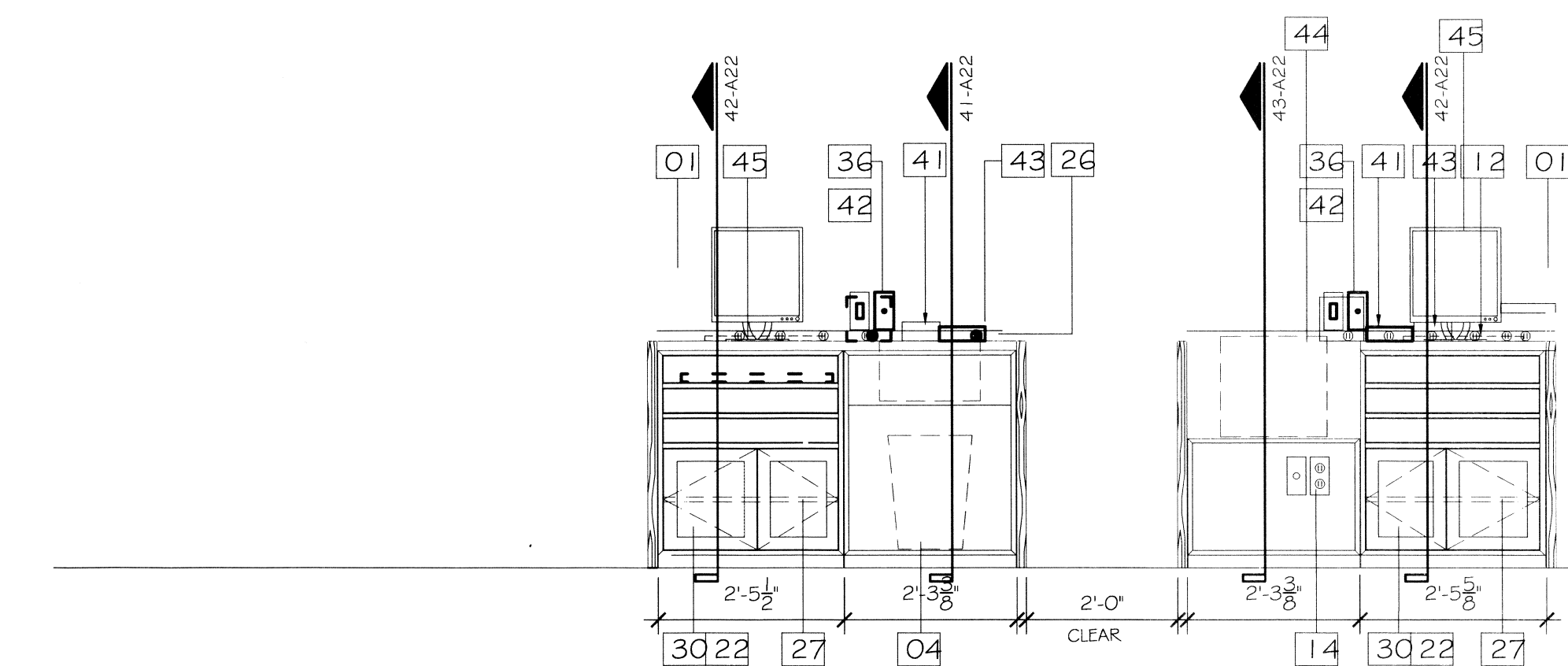


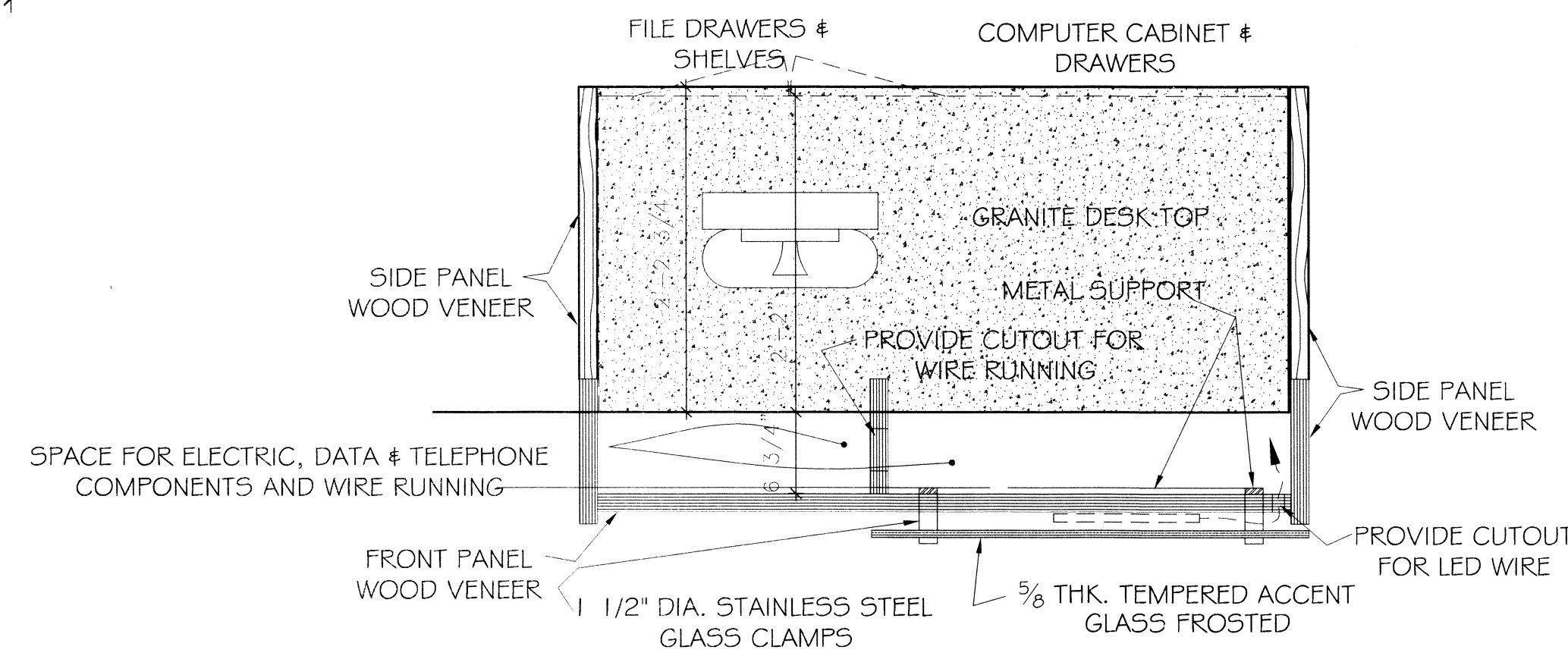
34 REGISTRATION DESK FLOOR PLAN
SCALE: 1/2" = 1'-0"



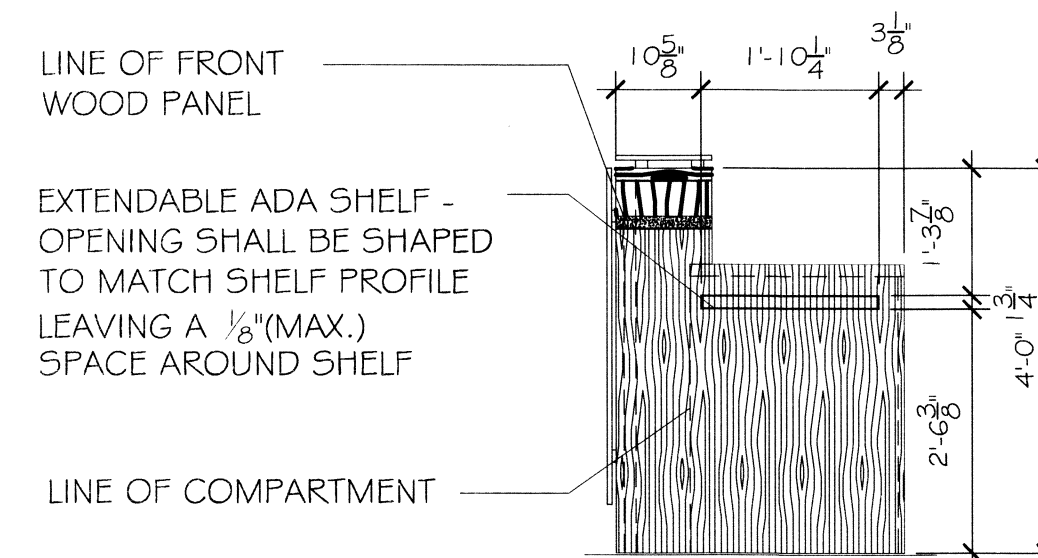
35 REGISTRATION DESK ELEVATION
SCALE: 3/4" = 1'-0"



36 REGISTRATION DESK MILLWORK ELEVATION
SCALE: 3/4" = 1'-0"



37 REGISTRATION DESK DETAIL
SCALE: 1" = 1'-0"



38 REGISTRATION DESK ELEVATION
SCALE: 1/2" = 1'-0"

FRONT DESK DETAILS VARY FROM ONE SCHEME TO ANOTHER. CONTACT INTERIOR DESIGNER FOR CLARIFICATION.

GENERAL NOTE

ALL EXPOSED MILLWORK CABINETS TO BE PLASTIC LAMINATE; ALL CABINET INTERIORS AND DRAWER INTERIORS TO BE MELAMINE COMPONENT PANELS.

PERFORATED METAL SCREEN

**REGISTRATION DESK
CONSTRUCTION NOTE LEGEND**

- 01 GRANITE COUNTERTOP. SEE DETAILS ON SHEET A804.
- 02 PLASTIC LAMINATE PL-1.
- 03 GRANITE TRIM, SEE DETAIL 9/A804.
- 04 OPEN CABINET WITH TRASH STORAGE BELOW.
- 05 "TACC-IT" UNIT - OWNER FURNISHED. CONFIRM SIZE W/ OWNER PRIOR TO MILLWORK FABRICATION.
- 06 PLASTIC LAMINATE CABINETS, PL-2: EXPOSED MILLWORK CABINET SURFACES.
- 07 S.S. DROP EDGE (1 1/2").
- 08 OPEN ELECTRICAL RACEWAY.
- 09 3' X 8" OPENING FOR ACCESS TO WIREWAY.
- 10 ADJUSTABLE SHELF WITH LIP AT BACK EDGE.
- 11 OPEN COMMUNICATIONS WIREWAY.
- 12 PLUGMOLD WITH OUTLETS.
- 13 EACH PANEL (PLAM) CONSISTS OF FOUR PIECES PLACED AT 45 DEGREE ANGLES.
- 14 HARMONICA AND DATA PORTS INSTALLED BELOW PRINTER.
- 15 INTERIOR PANELS (MELAMINE COMPONENT PANELS) PL-3: ALL INTERIOR PANELS AND DRAWER INTERIORS TO BE M.C.P.
- 16 ISOLATED GROUND DEDICATED CIRCUIT OUTLET.
- 17 FILE DRAWERS TYPICAL.
- 18 WIRE MANAGEMENT TROUGH.
- 19 1 1/2" DIAMETER HOLE WITH GROMMET.
- 20 LINE OF KEYBOARD UNIT FULL-OUT.
- 21 GUEST SAFETY DEPOSIT BOX (O.F.C.I.).
- 22 PERFORATED METAL SCREEN, McNICHOOLS, STAINLESS STEEL, 1/8 HOLES P.S.I., 50% DIA, 3/16" DIA, AT 1/4" STAGGERED CENTERS.
- 23 CASH DRAWER - OWNER FURNISHED; M-5 CASH DRAWER CORPORATION, MODEL #HP-122, (11.8"W X 15.2"L X 4.25"H) CONTRACTOR TO INSTALL AND ATTACH TO MILLWORK PRIOR TO FINAL FABRICATION. VERIFY SIZE/ MODEL# BEFORE FABRICATION W/ OWNER'S REF.
- 24 1/4" CLEAR ACRYLIC DIVIDERS W/ EXPOSED EDGES POLISHED.
- 25 OPEN CABINETS TYPICAL WITH ADJUSTABLE SHELVES.
- 26 FOLIO BUCKET - RECESSED IN COUNTER TOP WITH A CLEAR OPENING OF 16" X 16" X 9 1/2" DEEP - OWNER FURNISHED.
- 27 SLIDE-OUT SHELF WITH LIP AT BACK EDGE. ACCURIDE PULL-OUT SHELF RUNNER, MODEL # 322.
- 28 RECESSED PAPER STORAGE BEHIND PRINTER.
- 29 SLIDE OUT SHELF WITH PLASTIC LAMINATE FINISH.
- 30 COMPUTER CABINET WITH SLIDE-OUT SHELF. DOORS TO HAVE PERFORATED METAL SCREEN FOR VENTILATION.
- 31 MONITOR FOR SECURITY CAMERA.
- 32 INTERCOM DESK.
- 33 PAINT-ON KNOCKDOWN, TYPICAL.
- 34 PLASTIC LAMINATE CLAD PLYWOOD DIVIDERS.
- 35 EXTENDABLE H.C. ACCESSIBLE COUNTER TO BE BUILT PER CODES.
- 36 TELEPHONE OUTLET, TYPICAL.
- 37 SLIDE OUT SHELF FOR POSTING TRAY. 19" X 17" WIDE. FACE TO BE FLUSH WITH DRAWER FACE BELOW.
- 38 CERAMIC TILE BASE, TYPICAL.
- 39 CABINET WITH SLOTS AS SHOWN.
- 40 3/4" SUBSTRATE-TOE KICK.
- 41 TESA UNIT - OWNER FURNISHED.
- 42 CREDIT CARD IMPRINTER - OWNER FURNISHED.
- 43 RESERVATIONS TELEPHONE OWNER FURNISHED.
- 44 COMPUTER PRINTER - OWNER FURNISHED ON RECESSED COUNTERTOP WITH FRONT ACCESS.
- 45 FLAT SCREEN MONITOR ON COUNTERTOP WITH KEYBOARD OWNER FURNISHED.
- 46 PLASTIC LAMINATE FINISH, TYPICAL.
- 47 TELEPHONE CONSOLE - OWNER FURNISHED.
- 48 NOT USED.
- 49 CABINET WITH ADJUSTABLE SHELF WITH LIP AT BACK EDGE.
- 50 3/4" PLYWOOD, TYPICAL.
- 51 1/2" PLYWOOD, TYPICAL.
- 52 1X2 WOOD TRIM.
- 53 PLYWOOD PANEL WITH PLASTIC LAMINATE FINISH.

DAMMON ENGINEERING, INC.
Architects & Engineers

LAQUINTA INNS & SUITES

S.U. ARCHITECTURE, INC.
WESTMINSTER, COLORADO 80031

JOB No: 2196 DATE: 02-03-2014
DRAWN BY: JTL CHECKED BY: CKD

REVISIONS

2/5/14

ENLARGED
REGISTRATION
AREA PLAN
& ELEVATIONS

SHEET No. 29 OF 53

A21