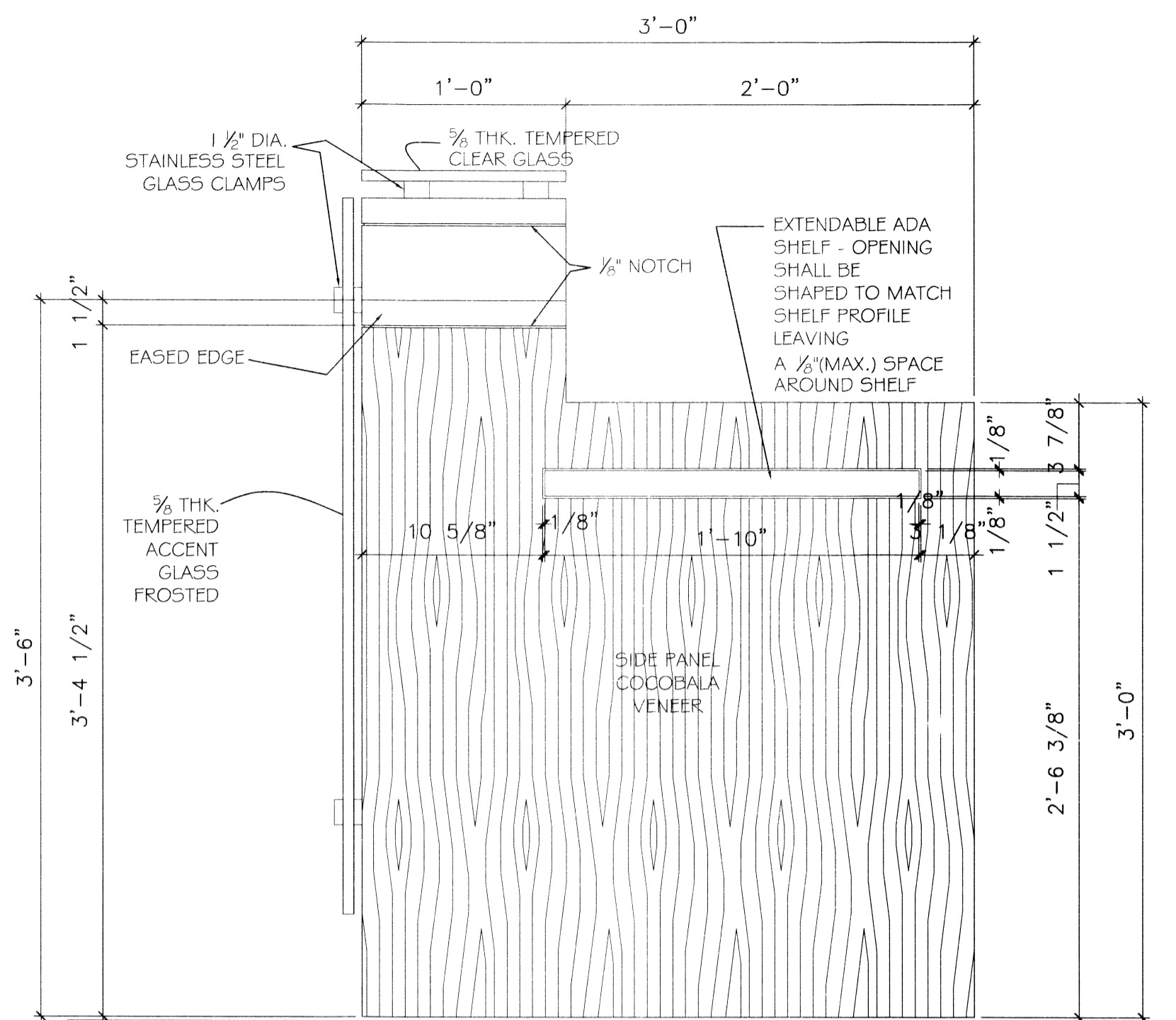
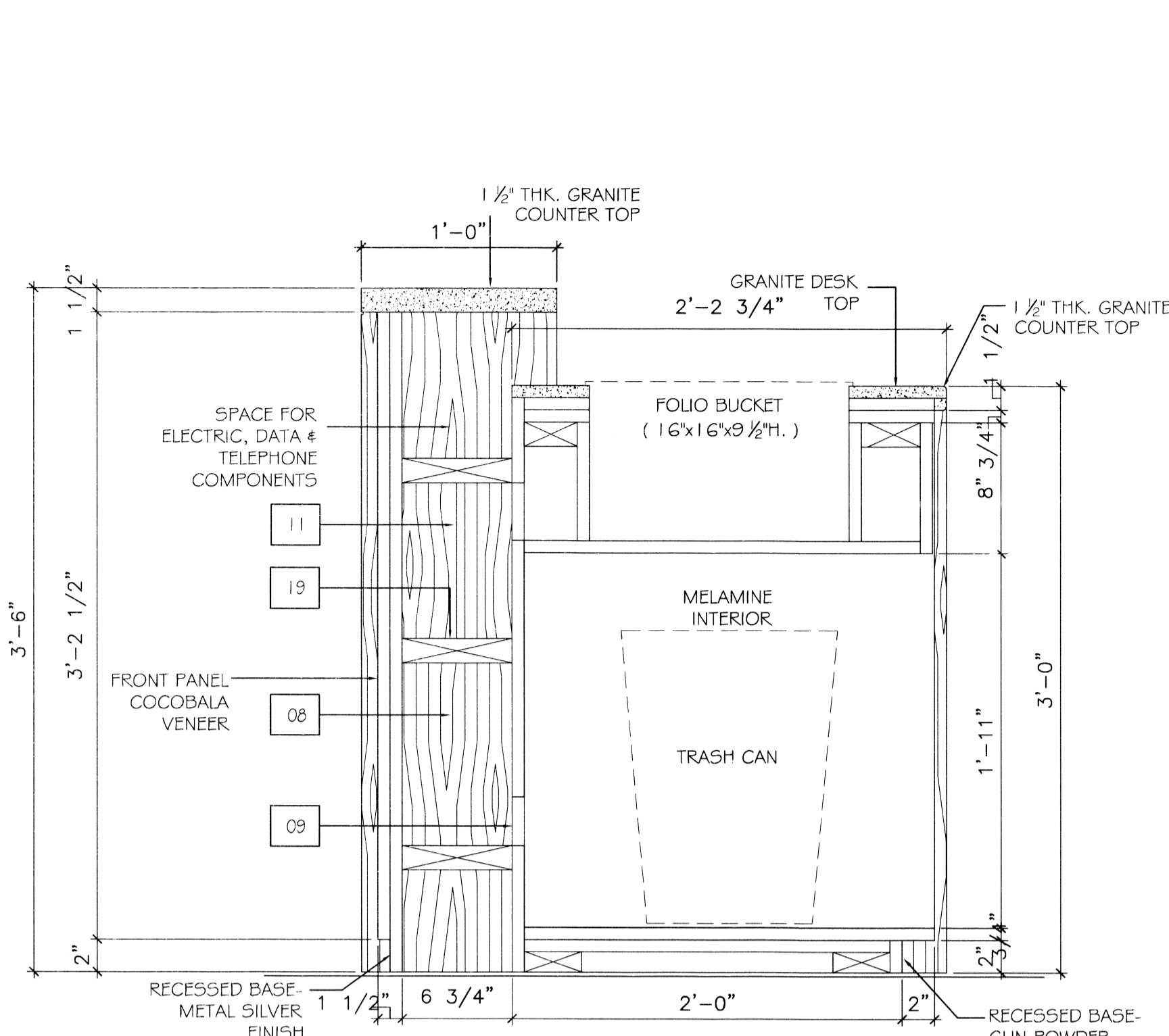


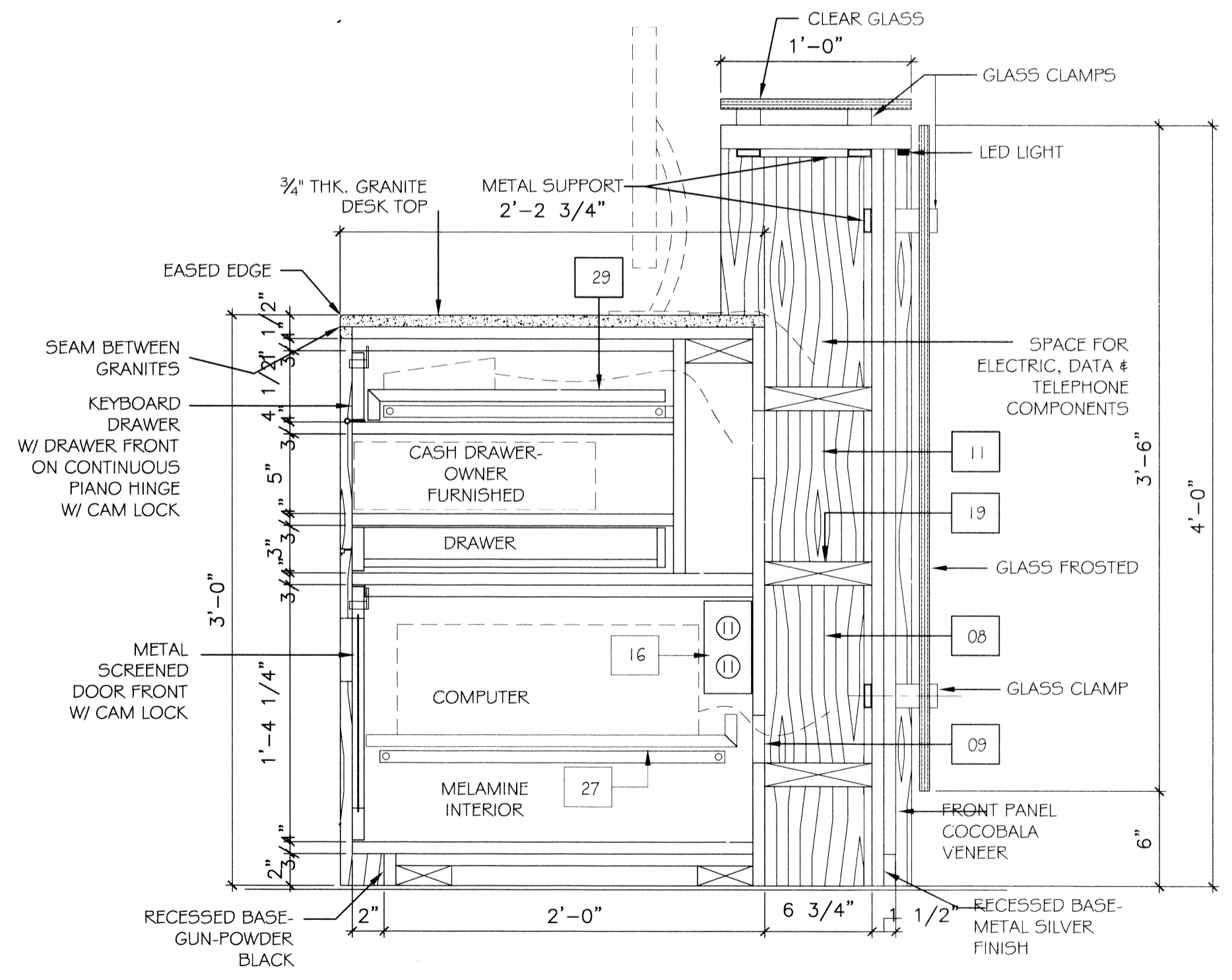
39 REGISTRATION DESK ELEVATION
SCALE: 1-1/2" = 1'-0"



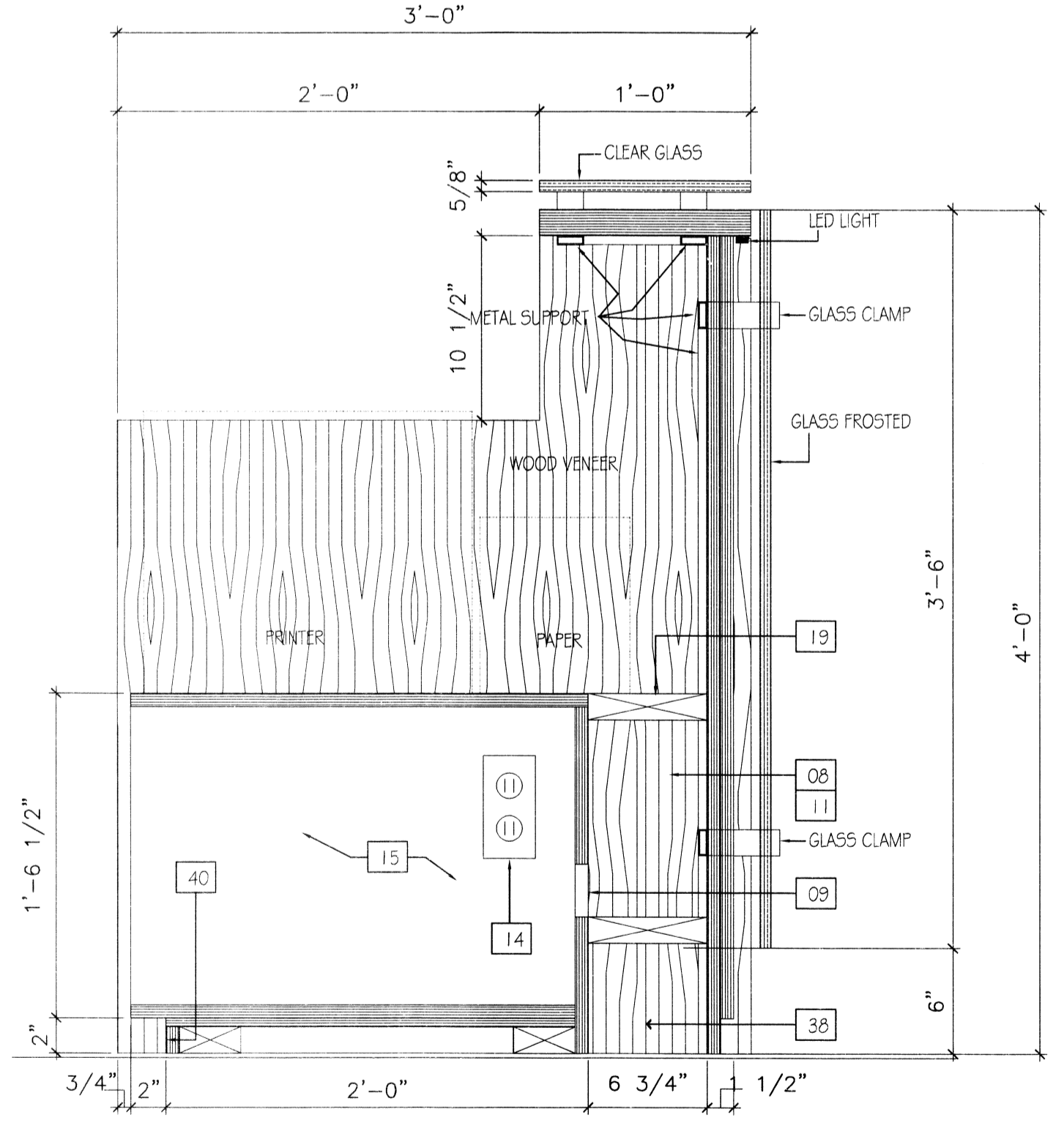
40 REGISTRATION DESK SECTION
SCALE: 1-1/2" = 1'-0"



41 REGISTRATION DESK SECTION
SCALE: 1-1/2" = 1'-0"



42 REGISTRATION DESK SECTION
SCALE: 1-1/2" = 1'-0"



43 REGISTRATION DESK SECTION
SCALE: 1-1/2" = 1'-0"

FRONT DESK DETAILS VARY FROM ONE SCHEME TO ANOTHER. CONTACT INTERIOR DESIGNER FOR CLARIFICATION.

- REGISTRATION DESK CONSTRUCTION NOTE LEGEND**
- 01 GRANITE COUNTERTOP, SEE DETAILS ON SHEET A804.
 - 02 PLASTIC LAMINATE PL-1.
 - 03 GRANITE TRIM, SEE DETAIL 9/A804.
 - 04 OPEN CABINET WITH TRASH STORAGE BELOW.
 - 05 "ACC-II" UNIT - OWNER FURNISHED, CONFIRM SIZE W/ OWNER PRIOR TO MILLWORK FABRICATION.
 - 06 PLASTIC LAMINATE CABINETRY, PL-2; EXPOSED MILLWORK MILLWORK CABINET SURFACES.
 - 07 5.5. DROP EDGE (1 1/2").
 - 08 OPEN ELECTRICAL RACEWAY.
 - 09 3' X 8' OPENING FOR ACCESS TO WIREWAY
 - 10 ADJUSTABLE SHELF WITH LIP AT BACK EDGE.
 - 11 OPEN COMMUNICATIONS WIREWAY.
 - 12 PLUGMOLD WITH OUTLETS.
 - 13 EACH PANEL (PLAM) CONSISTS OF FOUR PIECES PLACED AT 45 DEGREE ANGLES.
 - 14 HARMONICA AND DATA PORTS INSTALLED BELOW PRINTER.
 - 15 INTERIOR PANELS (MELAMINE COMPONENT PANELS) PL-3; ALL INTERIOR PANELS AND DRAWER INTERIORS TO BE M.C.P.
 - 16 ISOLATED GROUND DEDICATED CIRCUIT OUTLET.
 - 17 FILE DRAWERS TYPICAL.
 - 18 WIRE MANAGEMENT TROUGH.
 - 19 1 1/2" DIAMETER HOLE WITH GROMMET.
 - 20 LINE OF KEYBOARD UNIT PULL-OUT.
 - 21 GUEST SAFETY DEPOSIT BOX (O.F.C.I.).
 - 22 PERFORATED METAL SCREEN, MICHOLIS, STAINLESS STEEL, 18 HOLES P.S.I. 50% O/A, 3/16" DIAM. AT 1/4" STAGGERED CENTERS
 - 23 CASH DRAWER - OWNER FURNISHED; M-5 CASH DRAWER CORPORATION, MODEL #HP-122. (18.8"W X 15.2"L X 4.25"H) CONTRACTOR TO INSTALL AND ATTACH TO MILLWORK. PRIOR TO FINAL FABRICATION, VERIFY SIZE/ MODEL# BEFORE FABRICATION W/ OWNER'S REP.
 - 24 1/4" CLEAR ACRYLIC DIVIDERS W/ EXPOSED EDGES POLISHED.
 - 25 OPEN CABINETS TYPICAL WITH ADJUSTABLE SHELVES.
 - 26 FOLIO BUCKET - RECESSED IN COUNTER TOP WITH A CLEAR OPENING OF 16" X 16" X 9 1/2" DEEP - OWNER FURNISHED.
 - 27 SLIDE-OUT SHELF WITH LIP AT BACK EDGE. ACCURIDE PULL-OUT SHELF RUNNER, MODEL # 322.
 - 28 RECESSED PAPER STORAGE BEHIND PRINTER.
 - 29 SLIDE OUT SHELF WITH PLASTIC LAMINATE FINISH.
 - 30 COMPUTER CABINET WITH SLIDE-OUT SHELF. DOORS TO HAVE PERFORMED METAL SCREEN FOR VENTILATION.
 - 31 MONITOR FOR SECURITY CAMERA.
 - 32 INTERCOM DESK.
 - 33 PAINT-ON KNOCKDOWN, TYPICAL.
 - 34 PLASTIC LAMINATE GLAD PLYWOOD DIVIDERS
 - 35 H.C. ACCESSIBLE COUNTER TO BE BUILT PER CODES.
 - 36 TELEPHONE OUTLET, TYPICAL.
 - 37 SLIDE OUT SHELF FOR POSTING TRAY. 19" X 17" WIDE. FACE TO BE FLUSH WITH DRAWER FACE BELOW.
 - 38 CERAMIC TILE BASE, TYPICAL.
 - 39 CABINET WITH SLOTS AS SHOWN.
 - 40 3/4" SUBSTRATE-TOE KICK.
 - 41 TESA UNIT - OWNER FURNISHED.
 - 42 CREDIT CARD IMPRINTER - OWNER FURNISHED.
 - 43 RESERVATIONS TELEPHONE OWNER FURNISHED.
 - 44 COMPUTER PRINTER - OWNER FURNISHED ON RECESSED COUNTERTOP WITH FRONT ACCESS.
 - 45 FLAT SCREEN MONITOR ON COUNTERTOP WITH KEYBOARD OWNER FURNISHED.
 - 46 PLASTIC LAMINATE FINISH, TYPICAL.
 - 47 TELEPHONE CONSOLE - OWNER FURNISHED
 - 48 CLIKSTRIP LED ELEMENTS MWL.G SERIES LIGHTING.
 - 49 CABINET WITH ADJUSTABLE SHELF WITH LIP AT BACK EDGE.
 - 50 3/4" PLYWOOD, TYPICAL.
 - 51 1/2" PLYWOOD, TYPICAL.
 - 52 1X2 WOOD TRIM.

GENERAL NOTE

ALL EXPOSED MILLWORK CABINETRY TO BE PLASTIC LAMINATE. ALL CABINET INTERIORS AND DRAWER INTERIORS TO BE MELAMINE COMPONENT PANELS.

PERFORATED METAL SCREEN

DAMMON ENGINEERING, INC.
Architects & Engineers

LAQUINTA INNS & SUITES

501 WEST BARKER LANE, SUITE 711, DALLAS, TX 75202
PHONE: 955-649-5632
FAX: 955-641-1805

DATE: 02-08-2014
JOB No: 2196
JOB No: 2196
DRAWN BY: JTL
CHECKED BY: CKD

REVISIONS

REGISTERED ARCHITECT

2/5/14

REGISTRATION DESK MILLWORK DETAILS

SHEET No: 30 OF 53

A22