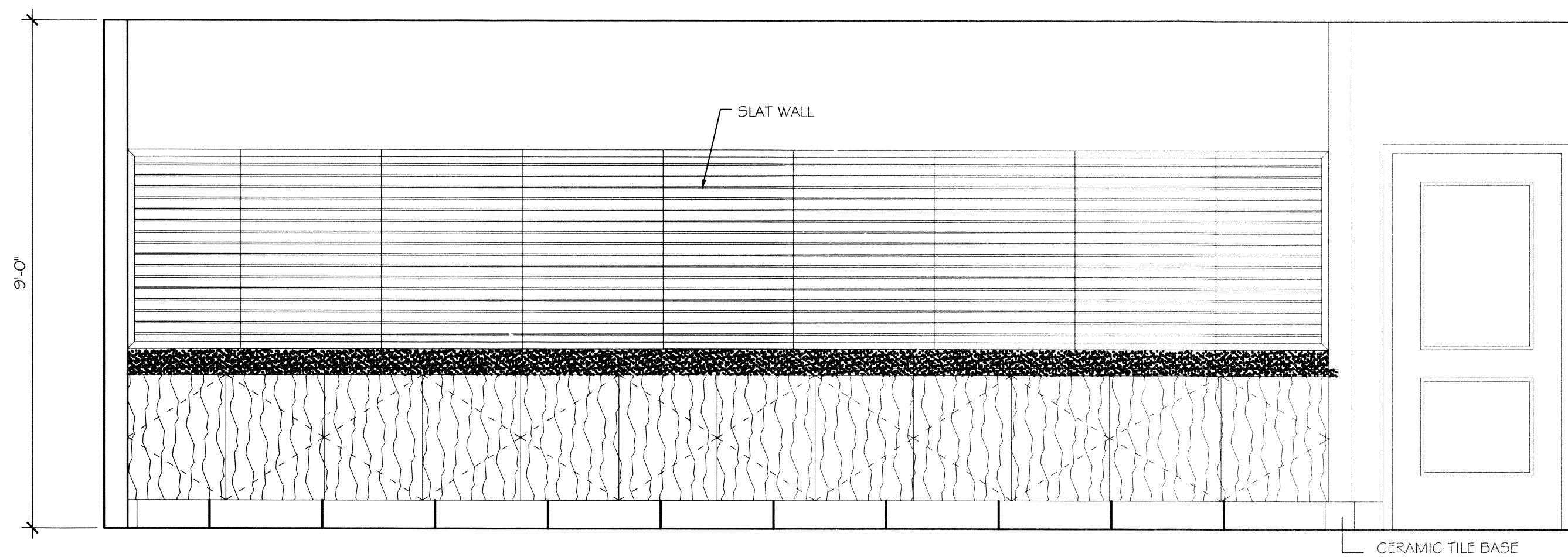
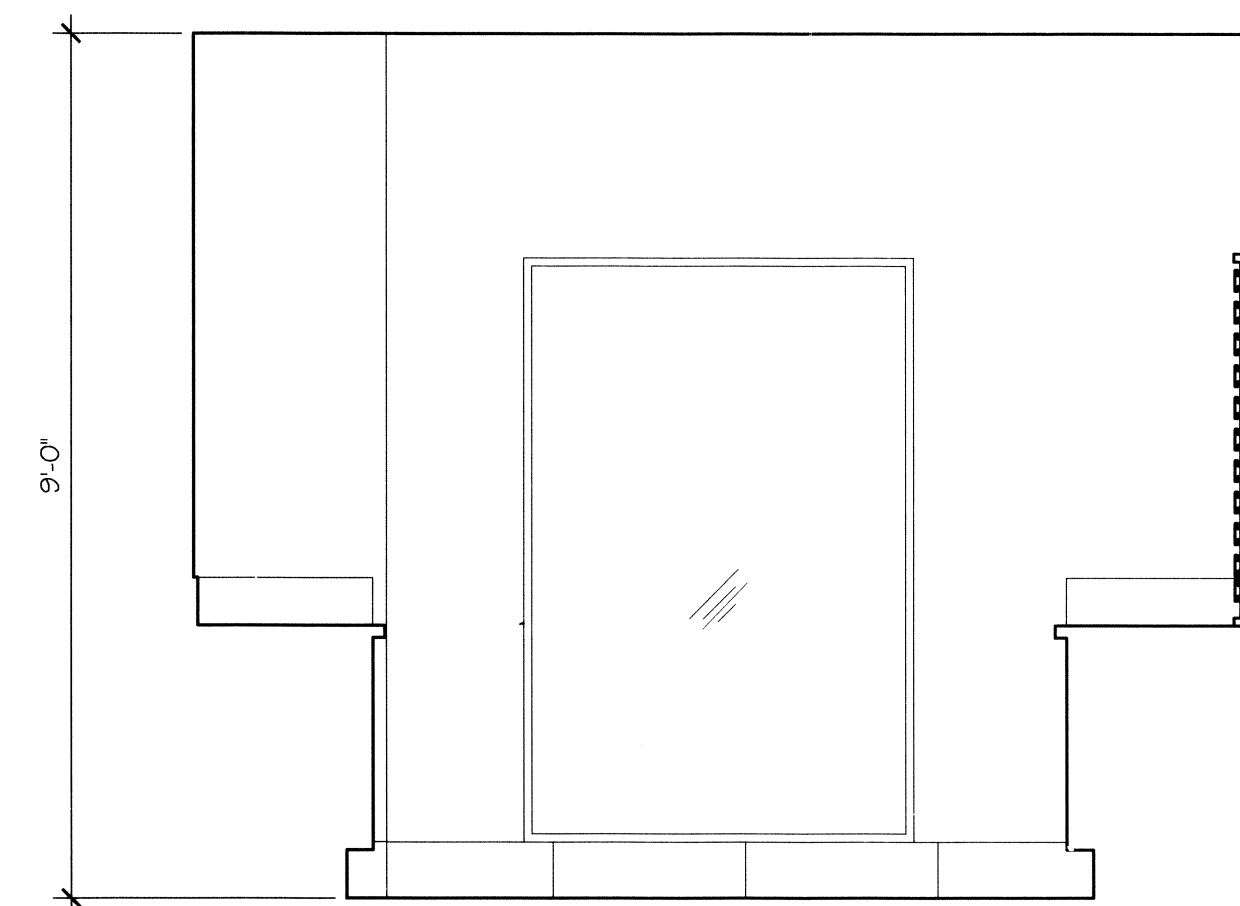


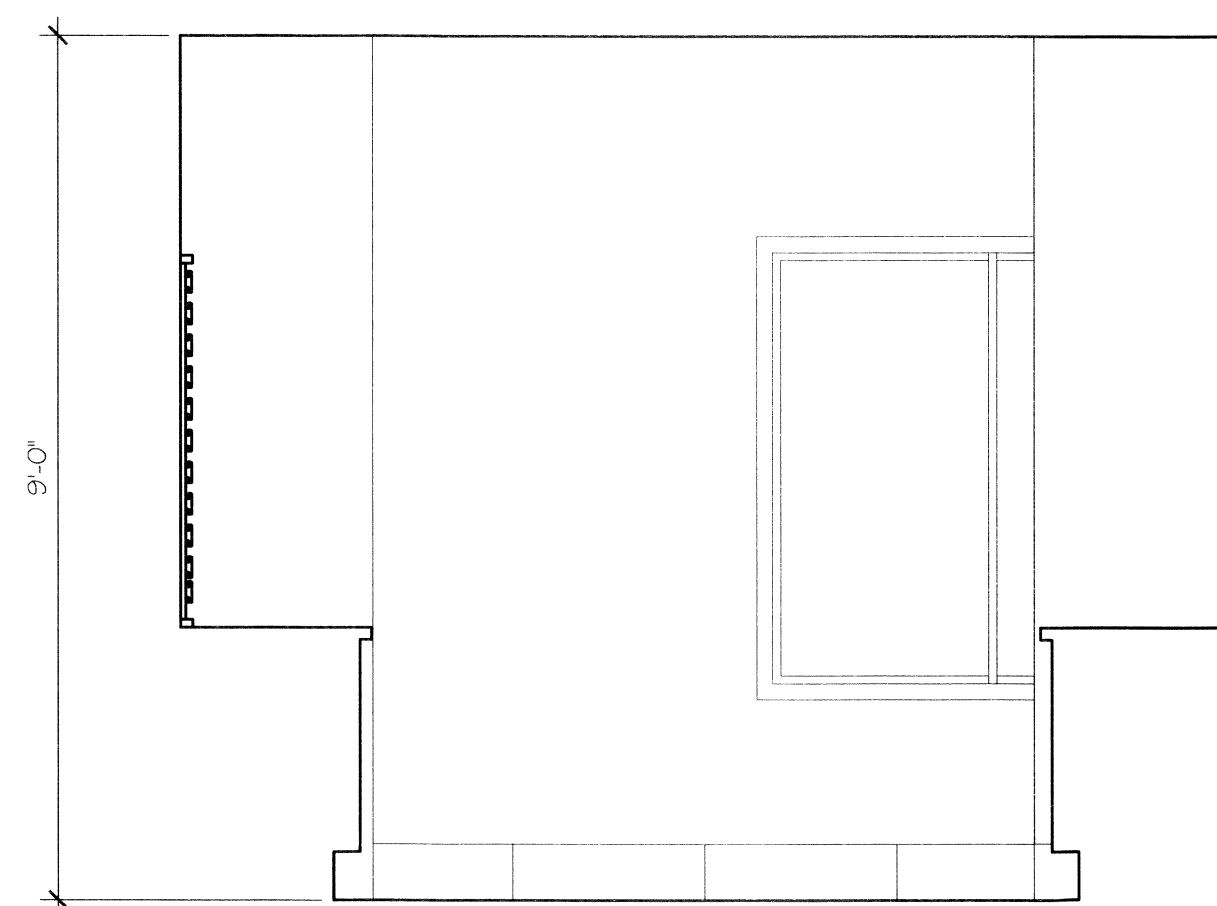
59 BREAKFAST BUFFET ELEVATION
SCALE: 1/2" = 1'-0"



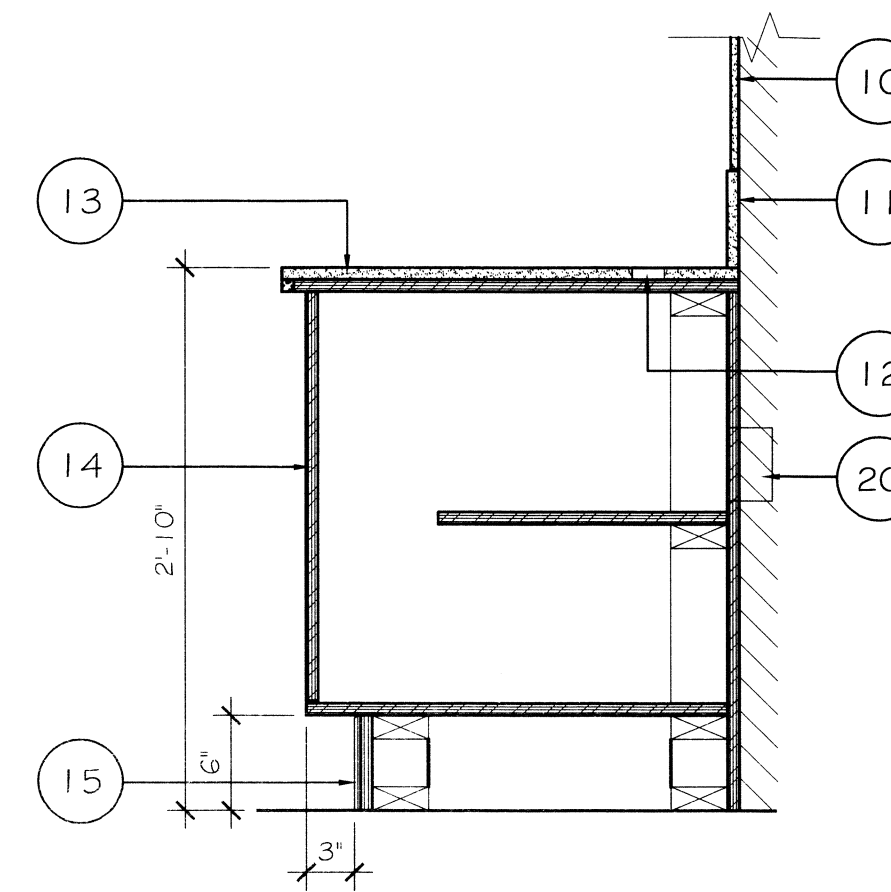
58 BREAKFAST SERVING BAR ELEVATION
SCALE: 1/2" = 1'-0"



56 BREAKFAST SERVING ELEVATION
SCALE: 1/2" = 1'-0"



57 BREAKFAST SERVING ELEVATION
SCALE: 1/2" = 1'-0"



60 BUFFET SECTION
SCALE: 1" = 1'-0"

SLAT WALL NOTE

Preferred Slatwall Manufacturers:

JTB Furniture Co. - 1402 Waterworks Road, Columbus, MS 39701
Contact: Tommy Yeatman at 662-328-1685 ext. 202, 662-327-1814 fax
tommy.yeatman@jtbfurniture.com

Warner Construction Inc. - 2001 Pittway Drive, Nashville, TN 37207
Contact: Tony Warner at 615-226-8929 office, 615-351-3518 cell, 615-226-8903 fax
wci@bellsouth.net

Millwork Expressions, Inc. - 1868 Buford Hwy, Duluth, GA 30097
Contact: Jacob Johnson at 678-514-3400, 770-757-5578 cell, 678-262-3654 fax
jjohnson@millworkexpressions.com
www.millworkexpressions.com

OR by owner's General Contractor

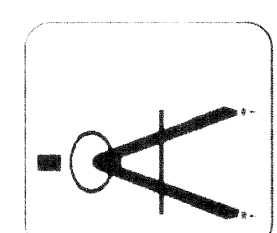
KEY NOTES

1. COUNTERTOPS TO BE AS NOTED IN MILLWORK SPEC NOTE 6.
2. CABINET FACE AND SIDE PANELS. PLAM CLAD MDF 3/4" PLYWOOD. EXPOSED FACES TO HAVE PLAM VENEER PATTERNS IN VERTICAL DIRECTION. RE: PLAM SPECS AT MILLWORK SPEC. NOTE 5.
3. RAISED FACE PANELS - 3/4" * PLAM FACED MDF PLYWOOD. EXPOSED FACES TO BE PLAM WITH VENEER PATTERN ROTATED 45°, BOOK MATCHED IN 4 QUADRANTS, AS SHOWN. 1/4" REVEAL JOINT BETWEEN PANELS.
4. FLUSH OVERLAY PANEL DOORS WITH SELF CLOSING, CONCEALED "EUROPEAN" STYLE HINGES. 3/4" PLAM FACED MDF PLYWOOD. EXPOSED FACES TO BE PLAM WITH VENEER PATTERN ROTATED 45°, BOOK MATCHED IN 4 QUADRANTS, AS SHOWN. 1/4" REVEAL JOINT BETWEEN DOORS. CONCEALED INTERIOR FACES TO BE MELAMINE VENEER.
5. CASTERS (4-PLACES-MIN). 3" CASTER WHEELS MOUNTED TO CABINET SUB-FRAME. CASTERS SHALL BE DURABLE, HARD SYNTHETIC, MAINTENANCE FREE WITH SEALED BEARINGS AND LOCKABLE 360° SWIVEL.
6. ADJUSTABLE SHELF WITH MULTIPLE HOLE PIN MOUNTING (MIN. 5mm DIAMETER PINS). HOLES SHALL BE AT 1 1/2" O.C. VERTICALLY.
7. 1/2" GYP. BD. OVER 7/8" METAL HAT CHANNELS ON 3 1/2" SUSPENDED WOOD STUDS.
8. HAVC DUCT AND SLOT DIFFUSER, TYPICAL.
9. LIGHT FIXTURE, TYPICAL. SEE ELECT. DRAWINGS.
10. CERAMIC TILE BACKSPLASH.
11. 6" BACKSPLASH UC.
12. 2" DIA GROMMET, TYPICAL.
13. 3/4" GRANITE/ SOLID SURFACE UC ON 3/4" PLYWOOD.
14. PLASTIC LAMINATE UF ON 3/4" PLYWOOD.
15. 6"X12" TILE BASE.
16. PROVIDE BLOCKING FOR UPPER CABINET MOUNTING POINTS.
17. RECESSED SHELF STANDARDS.
18. RECESSED SHELF.
19. PLASTIC LAMINATE COUNTERTOP.
20. POWER OUTLETS BELOW THE COUNTER.

MILLWORK SPECIFICATION

1. CABINET SHALL BE CONSTRUCTED TO MEET "AWI" PREMIUM GRADE STANDARDS.
2. PLYWOOD SHALL BE 3/4" MEDIUM DENSITY FIBERBOARD CORE (MDF) WITH PLAM CLADDING AS NOTED ON ALL EXPOSED FACES AND MELAMINE VENEERS ON INTERIOR CONCEALED FACES. EDGES SHALL BE BANDED WITH PLAM TO MATCH FACE PATTERNS.
3. STYLE SHALL BE "FLUSH OVERLAY".
4. ALL FASTENING SHALL BE FULLY CONCEALED.
5. REFER TO FINISH SCHEDULE FOR MILLWORK LAMINATES.

LAQUINTA INNS & SUITES



DAMMON ENGINEERING, INC.
Architects & Engineers

REGISTERED ARCHITECT/ENGINEER
WEST VIRGINIA LICENSE NO. 71-292
JOB No: 2196 DATE: 02-03-2014 CHECKED BY: CKD
DRAWN BY: JTL

dammonengineering.com
dammonera@bellsouth.net
PHONE: 955-643-5832
FAX: 955-643-5850

NO.	REVISIONS



BREAKFAST BAR ELEVATIONS & DETAILS

SHEET No: 33 OF 53

A25