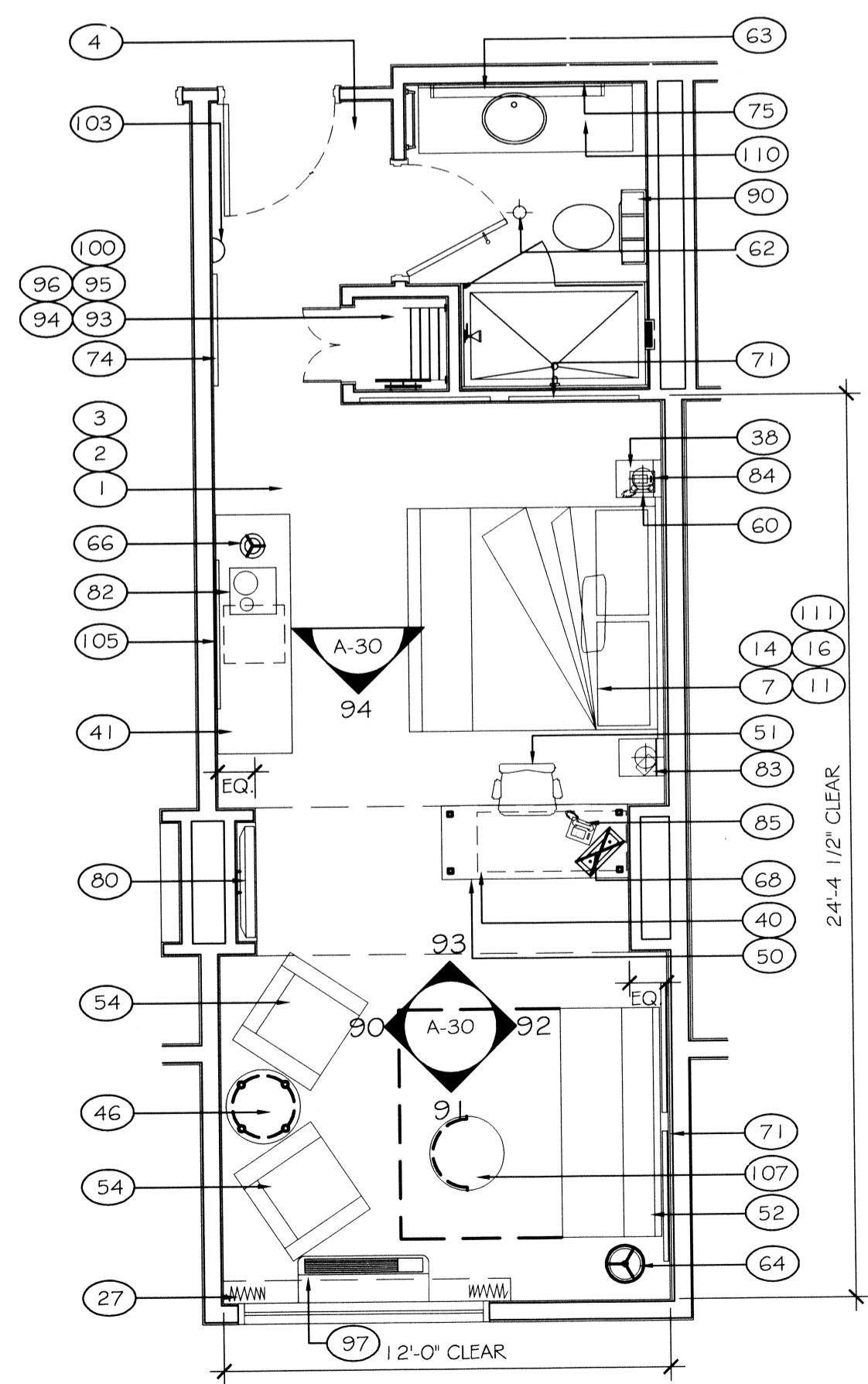
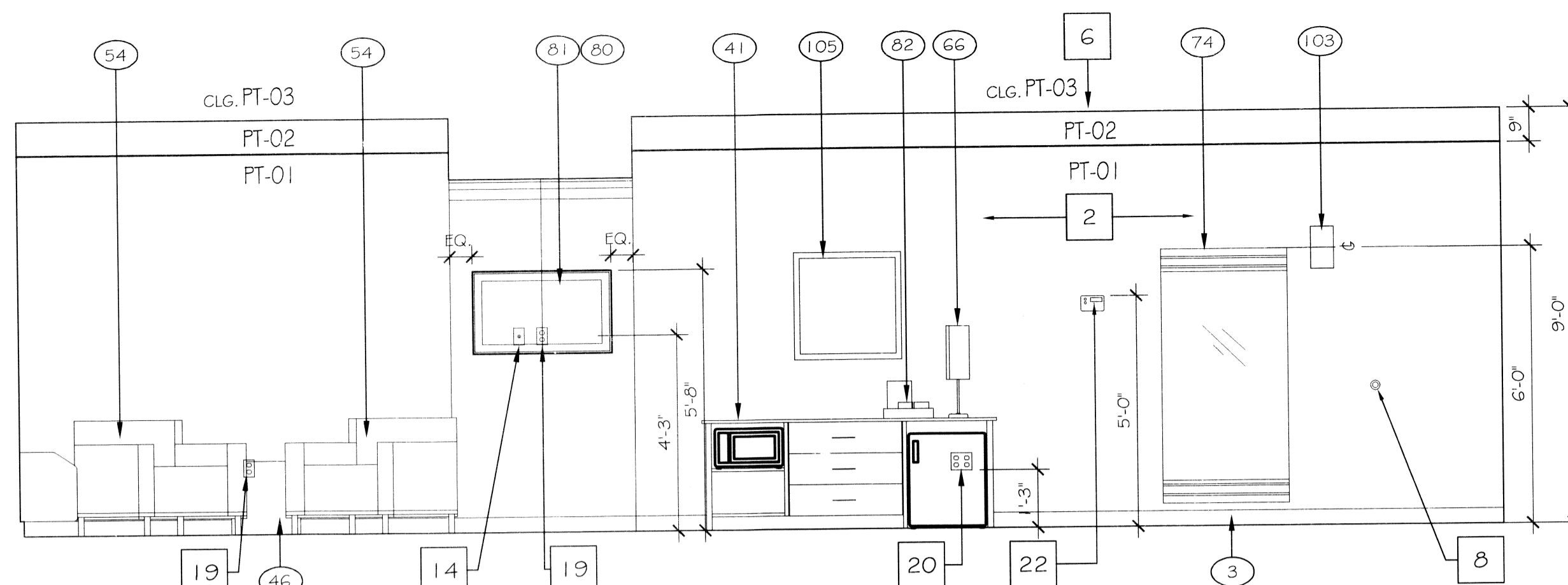


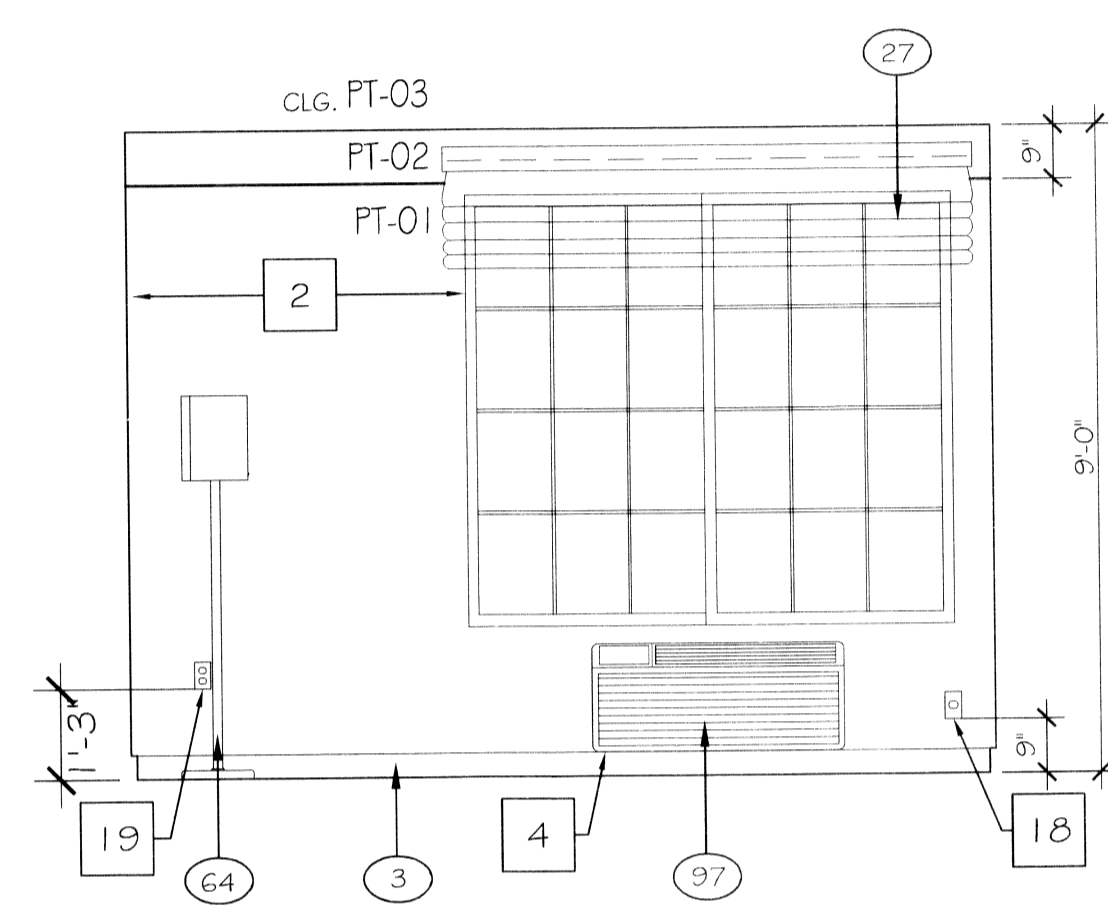
**88 DIMENSIONAL CONTROL PLAN**  
SCALE: 1/4" = 1'-0"



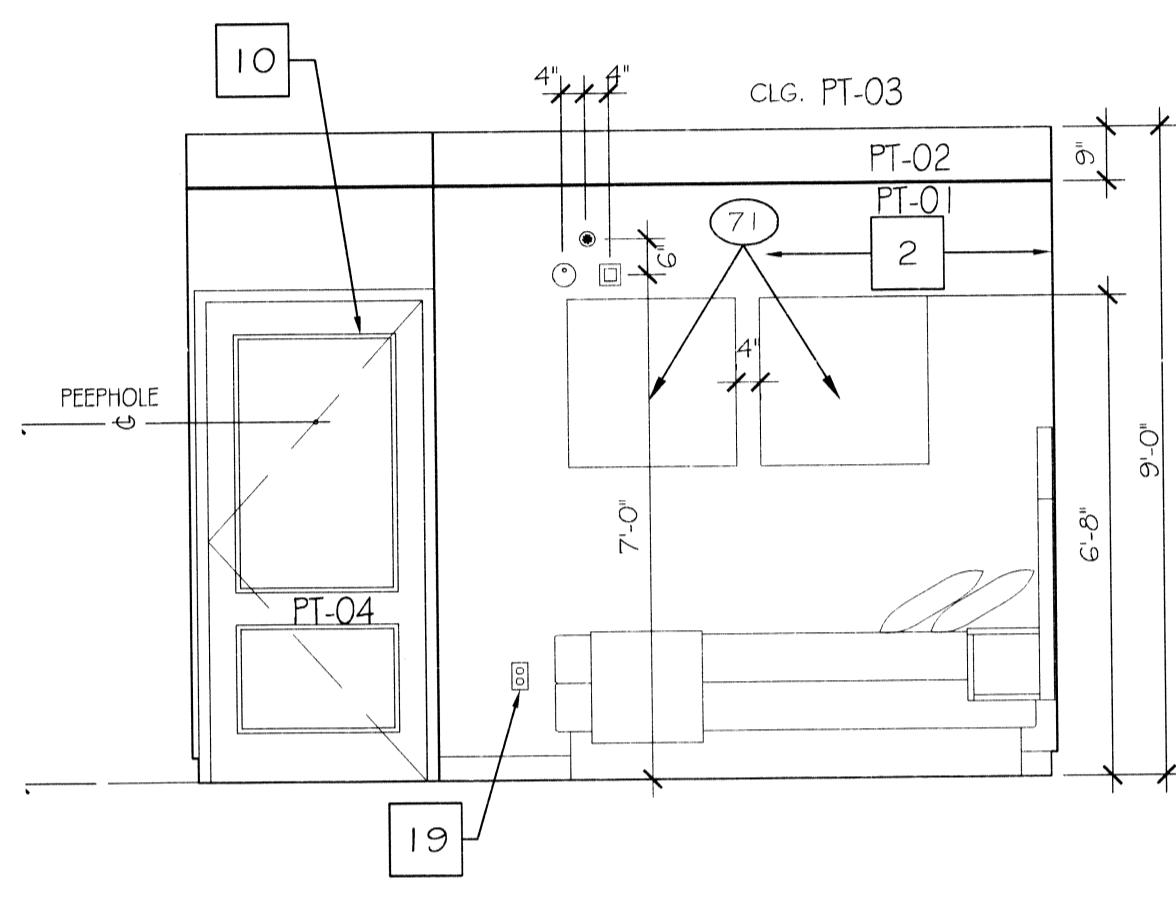
**89 FURNITURE PLAN**  
SCALE: 1/4" = 1'-0"



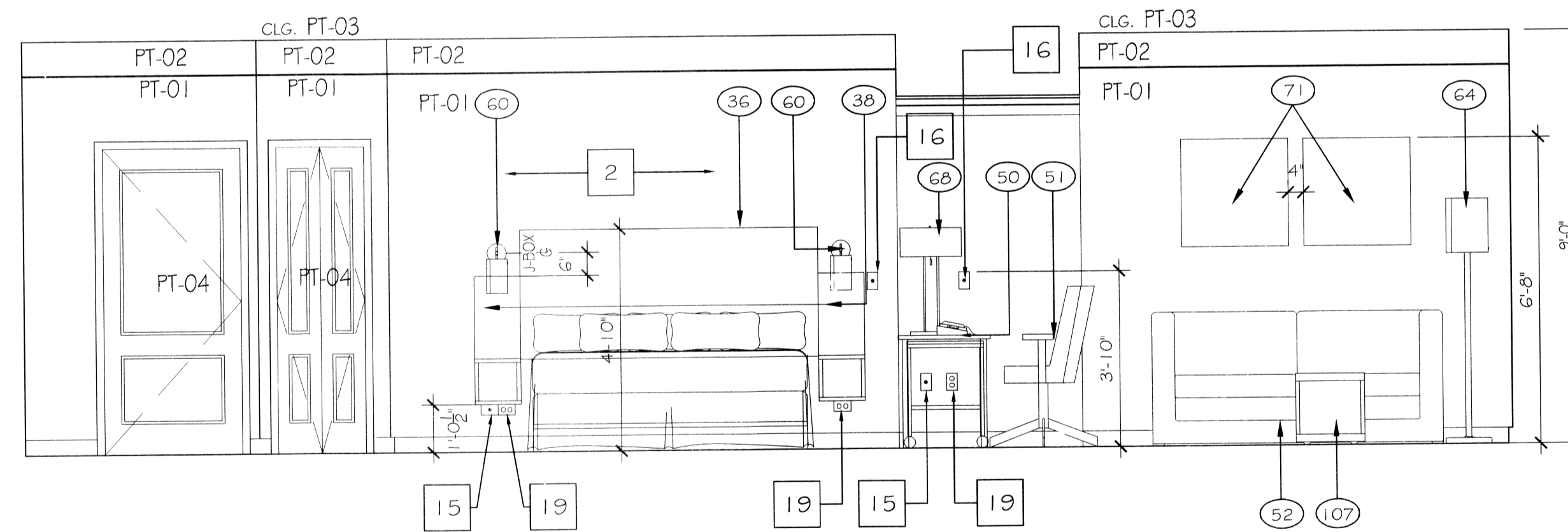
**90 GUESTROOM ELEVATION**  
SCALE: 3/8" = 1'-0"



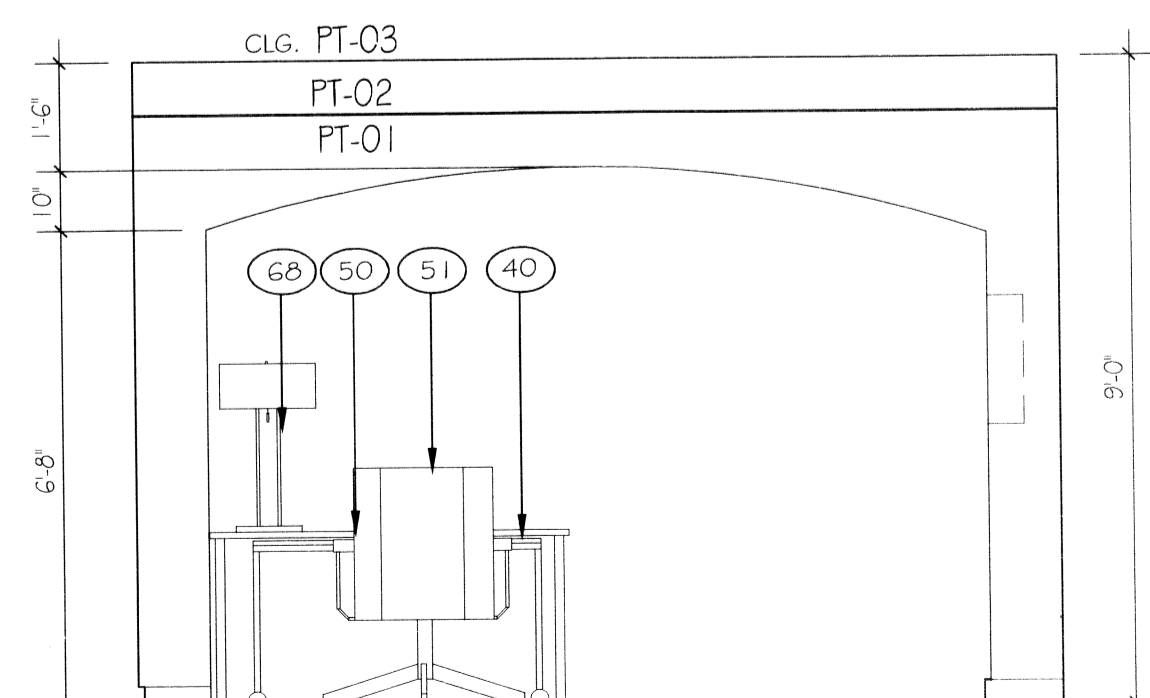
**91 GUESTROOM ELEVATION**  
SCALE: 3/8" = 1'-0"



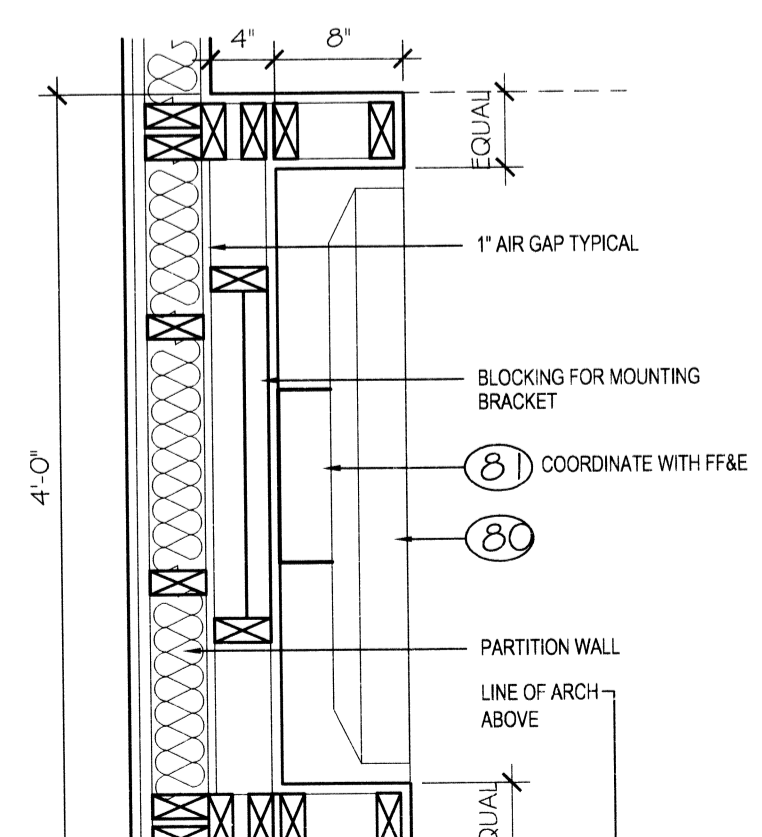
**93 GUESTROOM ELEVATION**  
SCALE: 3/8" = 1'-0"



**92 GUESTROOM ELEVATION**  
SCALE: 3/8" = 1'-0"



**94 GUESTROOM ELEVATION**  
SCALE: 3/8" = 1'-0"



**95 DETAIL "A" (RECESS FOR TV)**  
SCALE: 1" = 1'-0"

| FF#E SCHEDULE                                     |                |
|---|----------------|
| <b>CARPET / FLOORING (00)</b>                     |                |
| 1 GUESTROOM CARPET                                | V-GST-001-CP   |
| 2 GUESTROOM CARPET PAD                            | V-GST-001a-CPP |
| 3 GUESTROOM CARPET BASE                           | V-GST-001b-CPB |
| 4 GUESTROOM BATH RESILIENT TILE                   | V-GST-002-RT   |
| <b>BEDDING / DRAPERY (100)</b>                    |                |
| 5 COVERLET FABRICATION - DD                       | V-GST-100D-BD  |
| 6 COVERLET FABRICATION - QUEEN                    | V-GST-100Q-BD  |
| 7 COVERLET FABRICATION - KING                     | V-GST-101-BD   |
| 8 COVERLET FABRIC                                 | V-GST-100a-BDF |
| 9 BED THROW FABRICATION DOUBLE                    | V-GST-102D-BD  |
| 10 BED THROW FABRICATION QUEEN                    | V-GST-102Q-BD  |
| 11 BED THROW FABRICATION KING                     | V-GST-102K-BD  |
| 12 BEDSKIRT FABRICATION DOUBLE                    | V-GST-103D-BD  |
| 13 BEDSKIRT FABRICATION QUEEN                     | V-GST-103Q-BD  |
| 14 BEDSKIRT FABRICATION KING                      | V-GST-103K-BD  |
| 15 BEDSKIRT FABRIC                                | V-GST-103a-BDF |
| 16 MATTRESS AND BOXSPRING KING                    | V-GST-105-BD   |
| 17 BED BASE - KING                                | V-GST-105A-BD  |
| 18 MATTRESS AND BOXSPRING DOUBLE                  | V-GST-106-BD   |
| 19 BED BASE - DOUBLE                              | V-GST-106A-BD  |
| 20 MATTRESS AND BOXSPRING KING-ADA                | V-GST-107-BD   |
| 21 BED BASE - KING ADA                            | V-GST-107B-BD  |
| 22 MATTRESS AND BOXSPRING DOUBLE-ADA              | V-GST-108-BD   |
| 23 BED BASE - DOUBLE ADA                          | V-GST-108A-BD  |
| 24 MATTRESS AND BOXSPRING QUEEN                   | V-GST-109-BD   |
| 25 BED BASE - QUEEN                               | V-GST-109A-BD  |
| 26 MATTRESS AND BOXSPRING QUEEN-ADA               | V-GST-110-BA   |
| 27 ROMAN SHADE # ROLLER SHADE                     | V-GST-120-WT   |
| 28 ADA SLIDER SHADE AT ACCESSIBLE ROOMS           | V-GST-123-WT   |
| 29 NOT USED                                       | -              |
| 30 SHEER AT FRENCH DOOR - NOT USED                | V-GST-122-WT   |
| 31 SHEER FABRIC - NOT USED                        | V-GST-122a-WT  |
| 32 NECK ROLL PILLOW                               | V-GST-104-BD   |
| <b>CASEGOODS (200)</b>                            |                |
| 33 DRESSER  | V-GST-200-CG   |
| 34 DRESSER WITHOUT TOP - NOT USED                 | V-GST-200.1-CG |
| 35 HEADBOARD - DD                                 | V-GST-201D-CG  |
| 36 HEADBOARD - QUEEN                              | V-GST-201Q-CG  |
| 37 HEADBOARD - KING                               | V-GST-201K-CG  |
| 38 NIGHTSTAND-DD/QQ                               | V-GST-202-CG   |
| 39 NIGHTSTAND-KING                                | V-GST-203-CG   |
| 40 DESK   | V-GST-204-CG   |
| 41 DESK ON CASTERS                                | V-GST-205-CG   |
| 42 MICROFRIDGE CABINET/DRESSER                    | V-GST-207-CG   |
| 43 MICROFRIDGE CABINET/DRESSER W/O TOP - NOT USED | V-GST-207.1-CG |
| 44 OVAL COFFEE TABLE                              | V-GST-209-CG   |
| 45 SMALL DRESSER - NOT USED                       | V-GST-214-CG   |
| 46 MICROFRIDGE CABINET - NOT USED                 | V-GST-215-CG   |
| 47 END TABLE                                      | V-GST-216-CG   |
| 48 DESK PEDESTAL - NOT USED                       | V-GST-220-CG   |
| 49 DINING TABLE - NOT USED                        | V-GST-222-GST  |
| 50 HEADBOARD QUEEN                                | V-GST-225-CG   |
| 51 LARGE DESK (60")                               | V-GST-226-CG   |
| 52 WALL DESK                                      | V-GST-206-CG   |
| 53 COFFEE TABLE W/CASTERS @ KING                  | V-GST-208-CG   |
| 54 VANITY BASE                                    | V-GST-212-CG   |
| 55 VANITY BASE-ADA                                | V-GST-213-CG   |
| <b>CASEGOODS (300)</b>                            |                |
| 56 TASK (DESK) CHAIR                              | V-GST-301-SG   |
| 57 SOFA SLEEPER                                   | V-GST-302-SG   |
| 58 SOFA SLEEPER FABRIC                            | V-GST-302a-SGF |
| 59 LOUNGE CHAIR                                   | V-GST-304-SG   |
| 60 LOUNGE CHAIR FABRIC                            | V-GST-304a-SGF |
| 61 SIDE CHAIR                                     | V-GST-308-SG   |
| 62 SIDE CHAIR FABRIC                              | V-GST-308a-SGF |
| 63 RECLINER - NOT USED                            | V-GST-309-SG   |
| 64 RECLINER FABRIC - NOT USED                     | V-GST-309a-SGF |
| 65 CHAISE/LOUNGE OR OPTIONAL SLEEPER SOFA         | V-GST-300-SG   |
| <b>LAMPS / LIGHTING (400)</b>                     |                |
| 66 BEDSIDE LAMP                                   | V-GST-403-LT   |
| 67 NOT USED                                       | -              |
| 68 BATH CEILING FIXTURE                           | V-GST-401-LT   |
| 69 VANITY LIGHT AT BATH                           | V-GST-402-LT   |
| 70 FLOOR LAMP                                     | V-GST-405-LT   |
| 71 VANITY LIGHT AT BATH - ADA                     | V-GST-406-LT   |
| 72 TABLE LAMP                                     | V-GST-407-LT   |
| 73 CEILING LIGHT AT ENTRY                         | V-GST-408-LT   |
| 74 DESK LAMP-TALL                                 | V-GST-409-LT   |
| 75 ENTRY SCOFFER - NOT USED                       | V-GST-414-LT   |
| 76 FLOOR LAMP W/O TABLE - NOT USED                | V-GST-416-LT   |
| 77 SIDE SCOFFER                                   | V-GST-400-LT   |
| 78 DESK LAMP-SHORT                                | V-GST-410-LT   |
| 79 TASK LAMP AT WALL DESK                         | V-GST-411-LT   |

| FF#E SCHEDULE (CONTINUED)   |                |
|---|----------------|
| <b>ART/ MIRRORS (500)</b>   |                |
| 71 FRAMED ARTWORK IN GUESTROOM  | V-GST-500-ART  |
| 72 FRAMED ARTWORK IN GUESTROOM-NOT USED   | V-GST-500a-ART |
| 73 FRAMED ARTWORK IN GUESTROOM-NOT USED   | V-GST-500c-ART |
| 74 FULL LENGTH MIRROR   | V-GST-501-MR   |
| 75 VANITY MIRROR  | V-GST-503-ART  |
| 76 ARTIST MIRROR  | V-GST-507-MR   |
| 77 ARTIST MIRROR  | V-GST-505-MR   |
| 78 VANITY MIRROR - ADA  | V-GST-504-ART  |
| <b>GUESTROOM MISC (600)</b>   |                |
| 79 MICRO-FRIDGE UNIT  | V-GST-601-MISC |
| 80 MICROWAVE  | V-GST-600a-MSC |
| 81 REFRIGERATOR   | V-GST-601b-MSC |
| 82 32" FLAT PANEL TV  | V-GST-602-MSC  |
| 83 TV SWIVEL WALL MOUNT   | V-GST-602a-MSC |
| 84 COFFEE MAKER   | V-GST-603-MSC  |
| 85 CLOCK RADIO  | V-GST-604-MSC  |
| 86 BEDSIDE TELEPHONE  | V-GST-605-MSC  |
| 87 SPEAKER TELEPHONE  | V-GST-606-MSC  |
| 88 HAIR DRYER   | V-GST-607-MSC  |
| 89 TOILET PAPER HOLDER  | V-GST-608-MSC  |
| 90 SHOWER CURTAIN ROD   | V-GST-609-MSC  |
| 91 TOWEL BAR  | V-GST-610-MSC  |
| 92 DECORATIVE TOWEL SHELF   | V-GST-611-MSC  |
| 93 FASCIAL TISSUE DISPENSER   | V-GST-612-MSC  |
| 94 ROBE HOOK  | V-GST-613-MSC  |
| 95 SUIT HANGER MINI HOOK  | V-GST-614a-MSC |
| 96 SKIRT HANGER MINI HOOK   | V-GST-614b-MSC |
| 97 LUGGAGE RACK   | V-GST-615-MSC  |
| 98 IRON, IRON BOARD & HOOK  | V-GST-616-MSC  |
| 99 PTAC   | V-GST-617-MSC  |
| 100 PTAC DIFFLECTOR   | V-GST-618-MSC  |
| 101 COAT CLOSET ROD W/O SHELF   | V-GST-619-MSC  |
| 102 COAT CLOSET ROD W/ SHELF  | V-GST-620-MSC  |
| 103 GUESTROOM DOOR LOCK   | V-GST-621-MSC  |
| <b>WALLCOVERING (800)</b>   |                |
| 104 NOT USED  | NOT USED       |
| <b>KEY SCHEDULE</b>   |                |
| 1 CARPET PAD # BASE   |                |
| 2 TEXTURE DRYWALL - REFER TO FINISH SCHEDULE  |                |
| 3 CLOTHES ROD   |                |
| 4 THRU - WALL AIR CONDITIONING UNIT ROUGH OPENING 3' 6-1/8" X 1' 4-1/4" MIN.  |                |
| 5 REINFORCING BLOCKING IN WALL  |                |
| 6 TEXTURED CEILING - REFER TO FINISH SCHEDULE   |                |
| 7 DOOR MOUNTED DOOR STOP  |                |
| 8 WALL MOUNTED DOOR STOP  |                |
| 9 DECORATIVE WOOD MOULDING  |                |
| 10 2 PANEL METAL DOOR AND FRAME - PAINTED, REFER TO DOOR SCHEDULE.TESA LOCK HARDWARE  |                |
| 11 NOT USED   |                |
| 12 GYPSUM BOARD RETURN AT HEAD, JAMB & SILL   |                |
| 13 TELEPHONE/ DATA DUPLEX HOUSING, PROVIDE 3/4" CONDUIT PULL.   |                |
| 14 TELEVISION OUTLET w/ 2-CAT-5 OUTLETS IN A SINGLE "J" BOX, REFER TO FLOOR PLANS AND ELEVATIONS FOR DIMENSIONS AND LOCATION.   |                |
| 15 TELEPHONE OUTLET, REFER TO FLOOR PLANS AND ELEVATIONS FOR DIMENSIONS AND LOCATION.   |                |
| 16 LIGHT SWITCH, REFER TO FLOOR PLANS AND ELEVATIONS FOR DIMENSIONS AND LOCATION. ILLUMINATED SWITCH AT ENTRY AND BATHROOM  |                |
| 17 CONNECTING DOORS. SEE BUILDING PLAN FOR LOCATION   |                |
| 18 208V. OUTLET. REFER TO ELECTRICAL PLANS FOR MORE INFORMATION. ALWAYS LOCATE TO LEFT OF PTAC.   |                |
| 19 DUPLEX OUTLET. INSTALL HORIZONTALLY AT NIGHTSTANDS.  |                |
| 20 QUAD OUTLET  |                |
| 21 MOUNTING HEIGHT OF HEADBOARD, NIGHTSTAND WALL LAMP(S) BASED ON LOW PROFILE BOXSPRING.  |                |
| 22 T-STAT HEIGHT IS 48" IN HANDICAPPED ACCESSIBLE ROOMS AND 60" IN TYPICAL ROOMS.   |                |
| <b>DRAWING NOTES</b>  |                |
| A. VINYL FLOORING: VINYL WOOD FLOORING TO BE INSTALLED AT 45° FROM THE ROOM AXIS. DETERMINE STARTING POINT FOR EACH ROW SO AS TO MAINTAIN A MINIMUM 1/2" LONG PIECE AT EDGES. |                |
| <b>GENERAL NOTES</b>  |                |
| 1. ELECTRICAL OUTLETS IN ADJACENT ROOMS OF THE SAME TYPE SHALL BE OFFSET A MAXIMUM OF 8" & SEP. BY 5/8".  |                |
| 2. REFER TO BUILDING PLANS FOR LOCATION OF GUEST ROOM TYPES.  |                |
| 3. ALL PLAN DIMENSIONS ARE TO FACE OF STUD  |                |
| 4. REF. A32 THRU A34 FOR GUESTROOM BATHROOM FURNISHINGS.  |                |
| 5. REF. A20 FOR PUBLIC RESTROOM FURNISHINGS.  |                |
| REFERENCE FINISH SELECTION BOOK FOR PAINT AND MATERIAL LEGEND. XX   |                |
| A FOR F.F.E (V-GST-...) SCHEDULE SEE VIBRANT DESIGN SCHEME MANUAL   |                |
| B REFER A-16 FOR PARTITION TYPES  |                |

**DAMMON ENGINEERING, INC.**  
Architects & Engineers

14915 N. 19TH AVENUE, SUITE 100, DENVER, CO 80242  
PHONE: 985-643-5432  
FAX: 985-641-5950

CHIEF ENGINEER: BRIAN MISTICH, P.E.  
CHIEF ARCHITECT: KEVIN MINDICH  
10400 OLD 59TH AVENUE, SUITE 100, DENVER, CO 80242  
PHONE: 985-643-5432  
FAX: 985-641-5950

LAQUINTA INNS & SUITES

501 CONSTITUTION AVE  
WESTLAKE, UTAH 84143

JOB No: 2196 DATE: 02-03-2014  
DRAWN BY: JTL CHECKED BY: CKD

REV. 5/06

2/5/14

EXTENDED KING SUITE DETAILS

SHEET No: 38 OF 53

**A30**