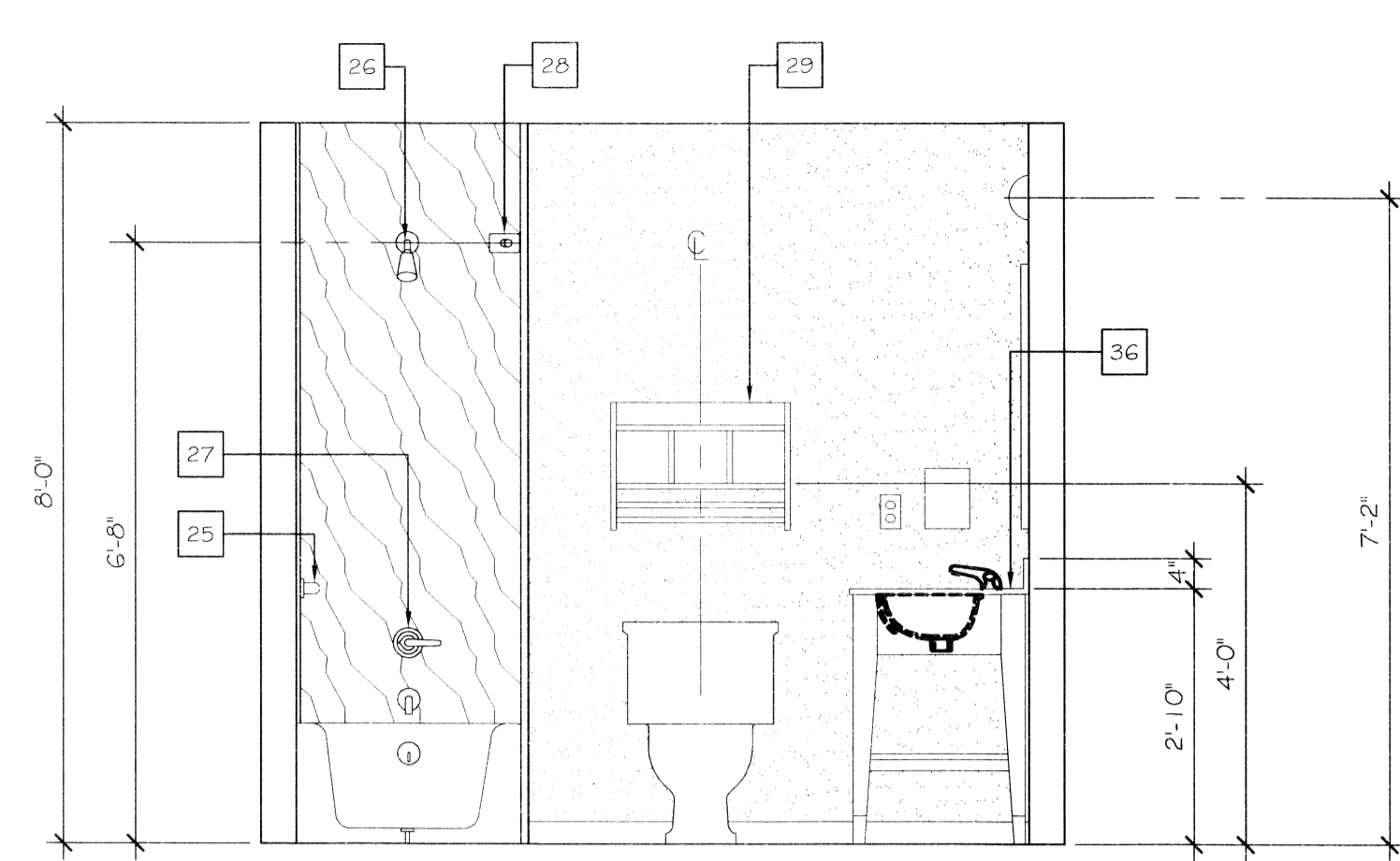
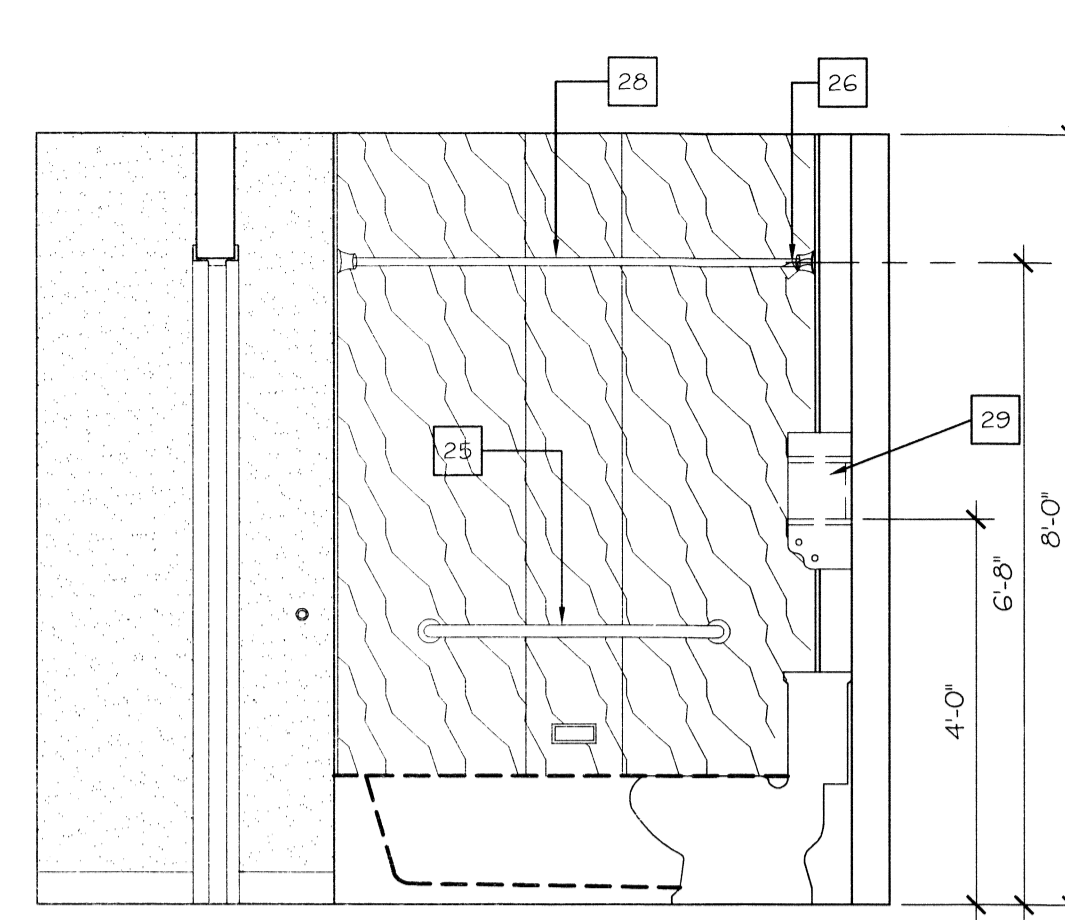


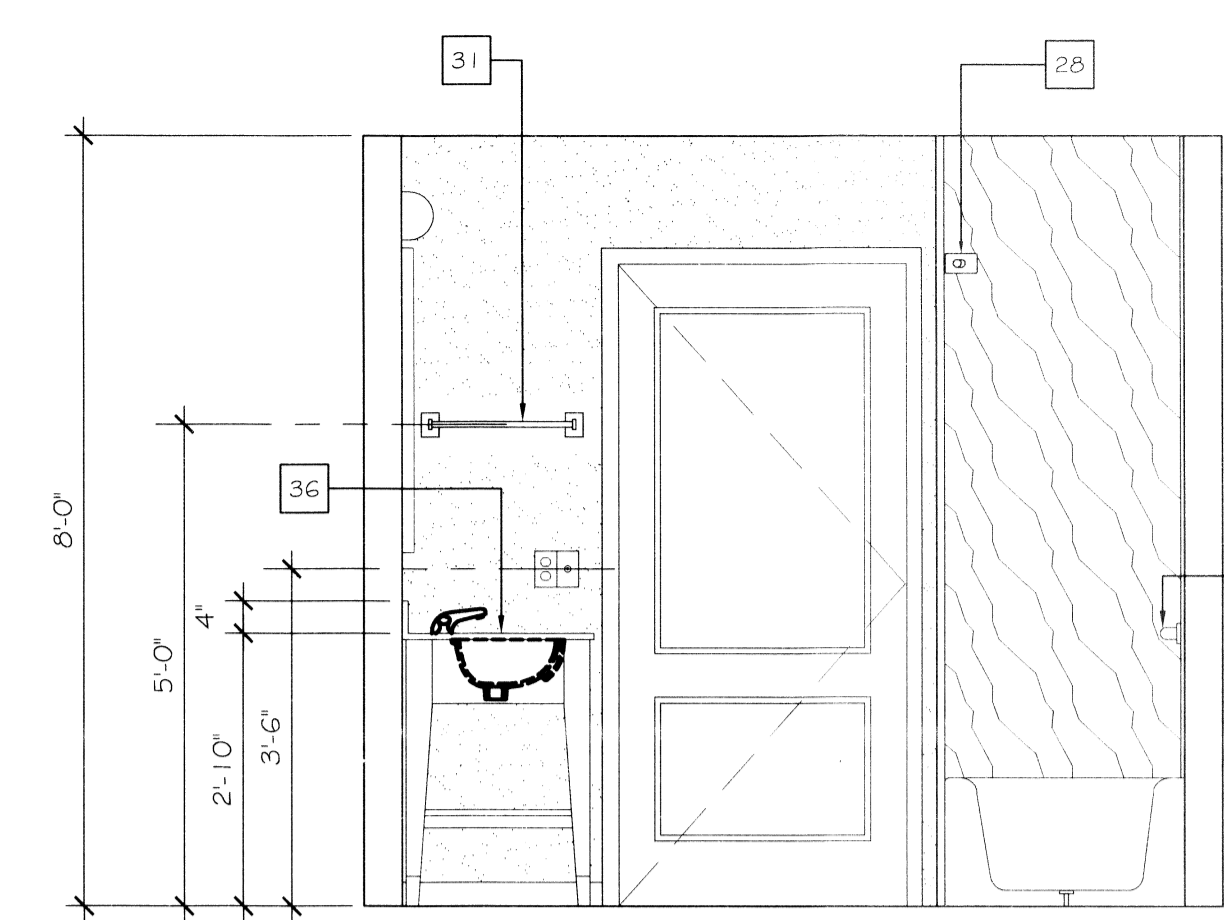
108 BATH ELEVATION
SCALE: 1/2" = 1'-0"



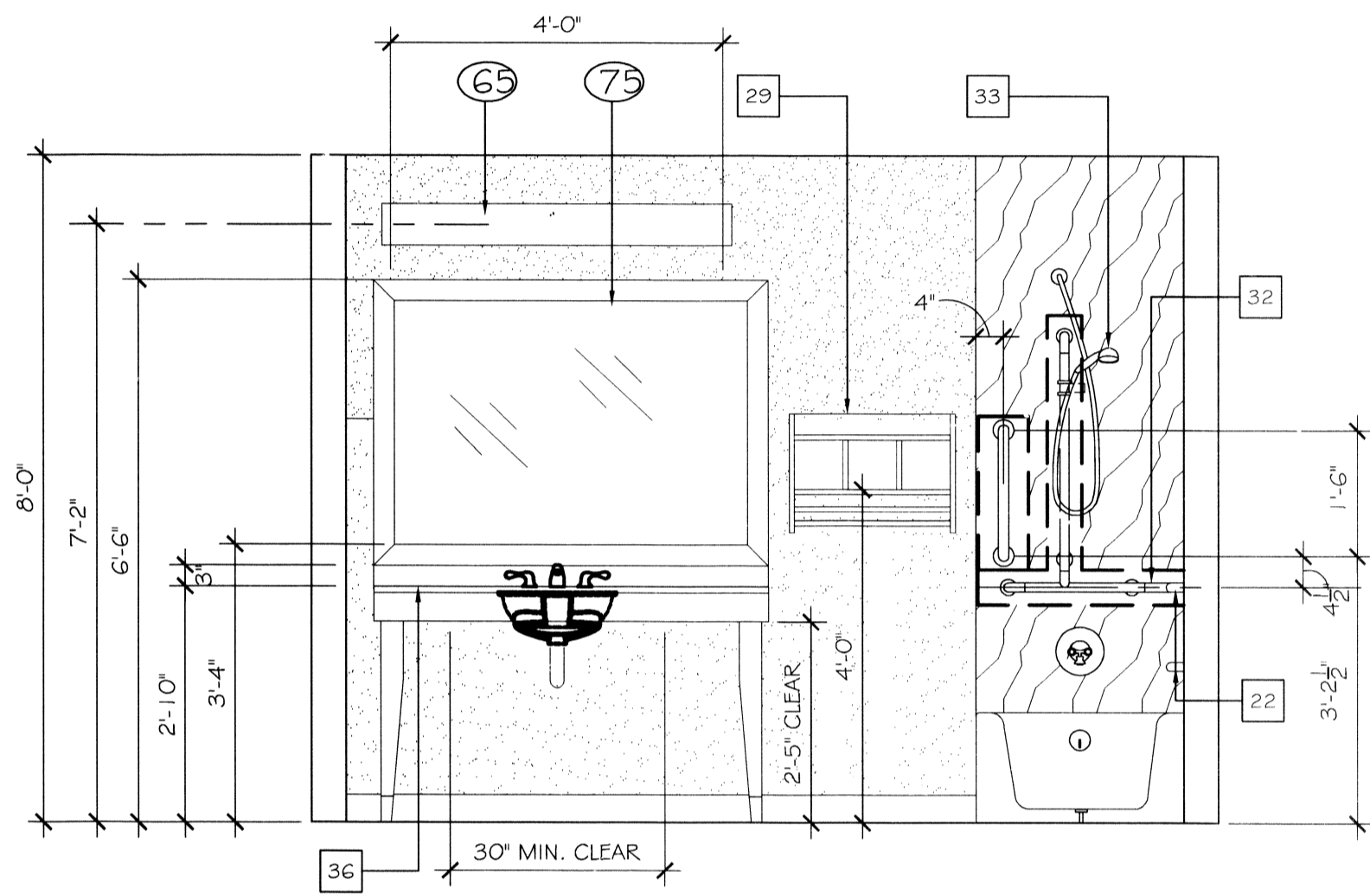
109 BATH ELEVATION
SCALE: 1/2" = 1'-0"



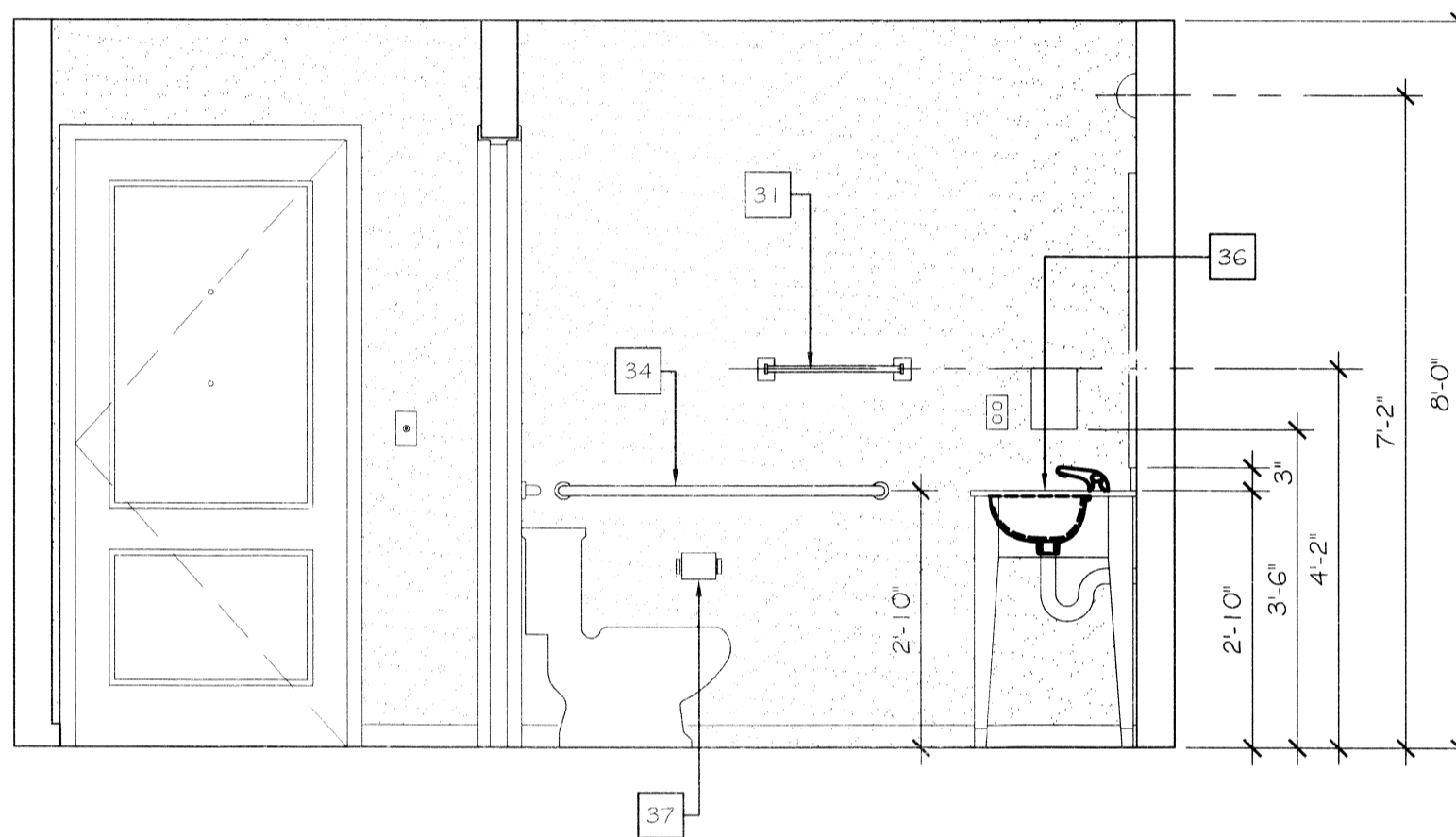
110 BATH ELEVATION
SCALE: 1/2" = 1'-0"



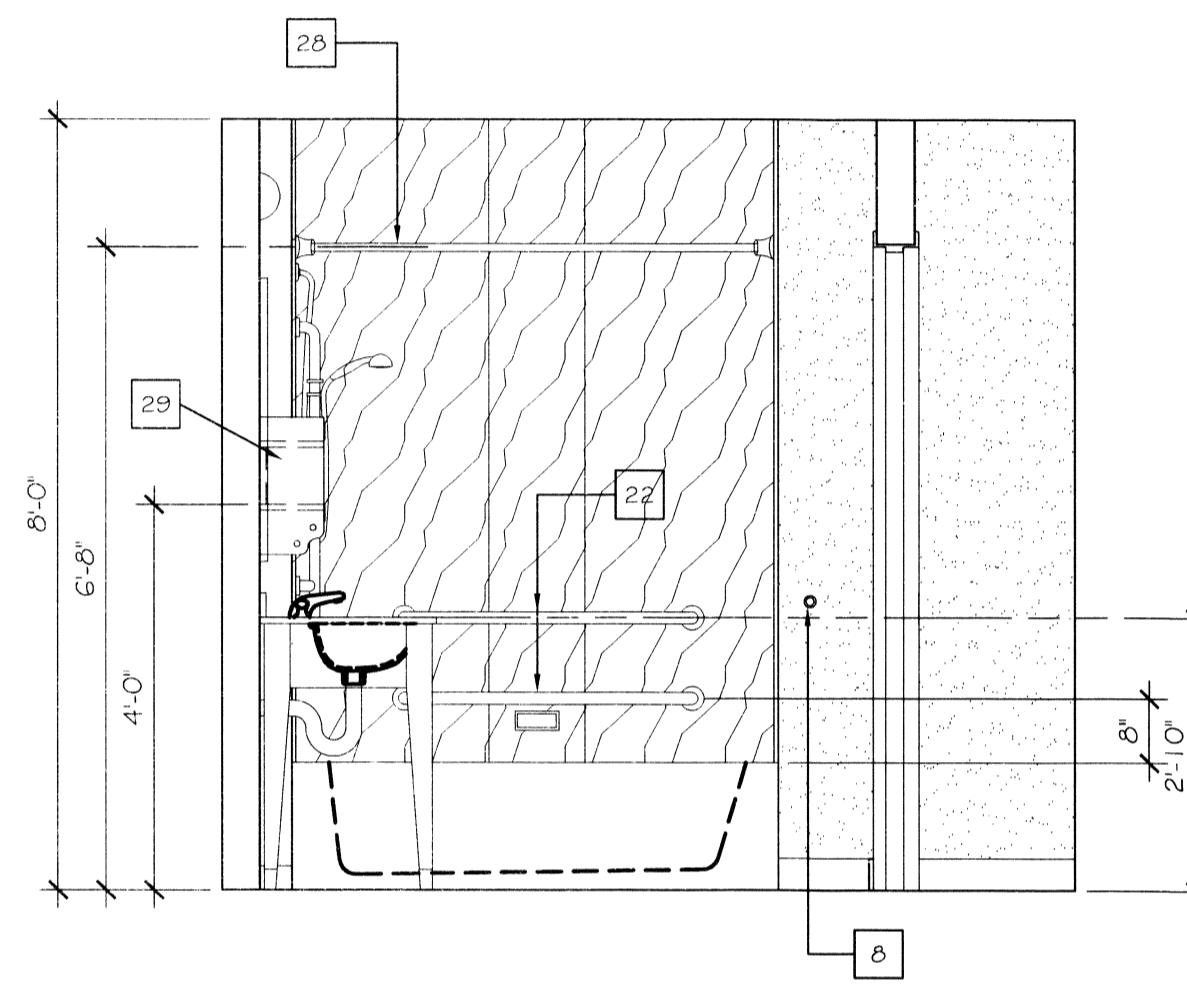
111 BATH ELEVATION
SCALE: 1/2" = 1'-0"



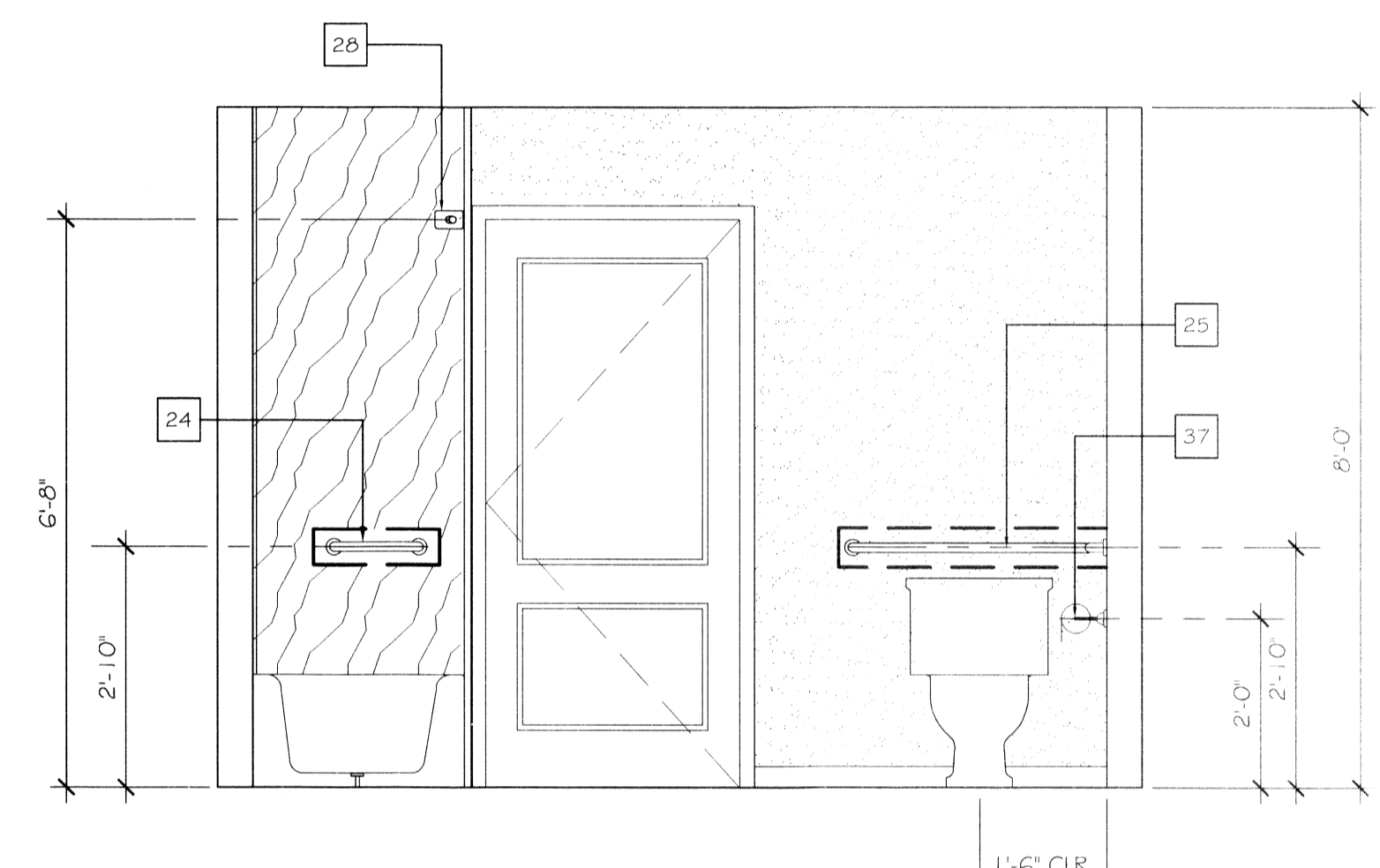
112 BATH ELEVATION
SCALE: 1/2" = 1'-0"



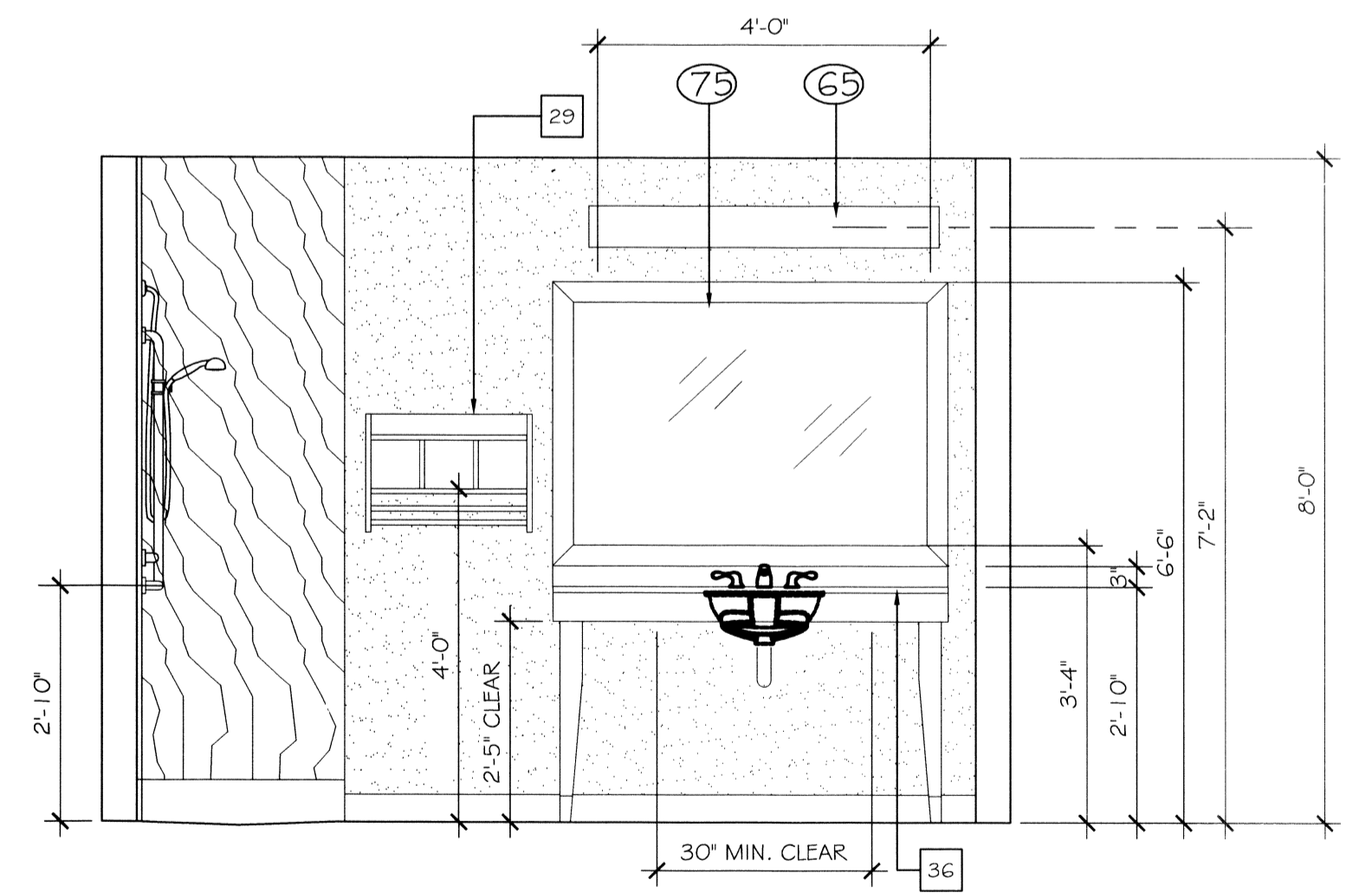
113 BATH ELEVATION
SCALE: 1/2" = 1'-0"



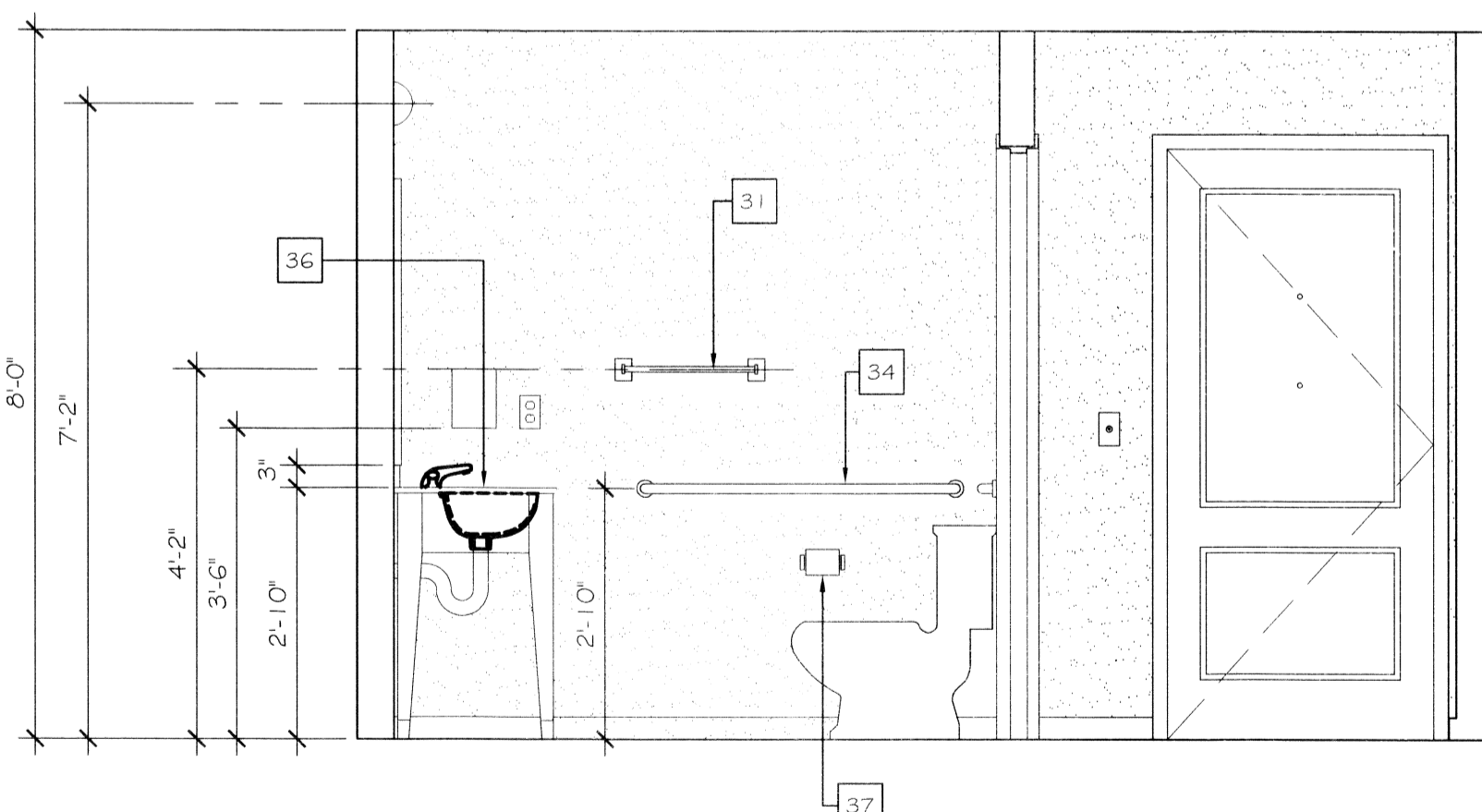
114 BATH ELEVATION
SCALE: 1/2" = 1'-0"



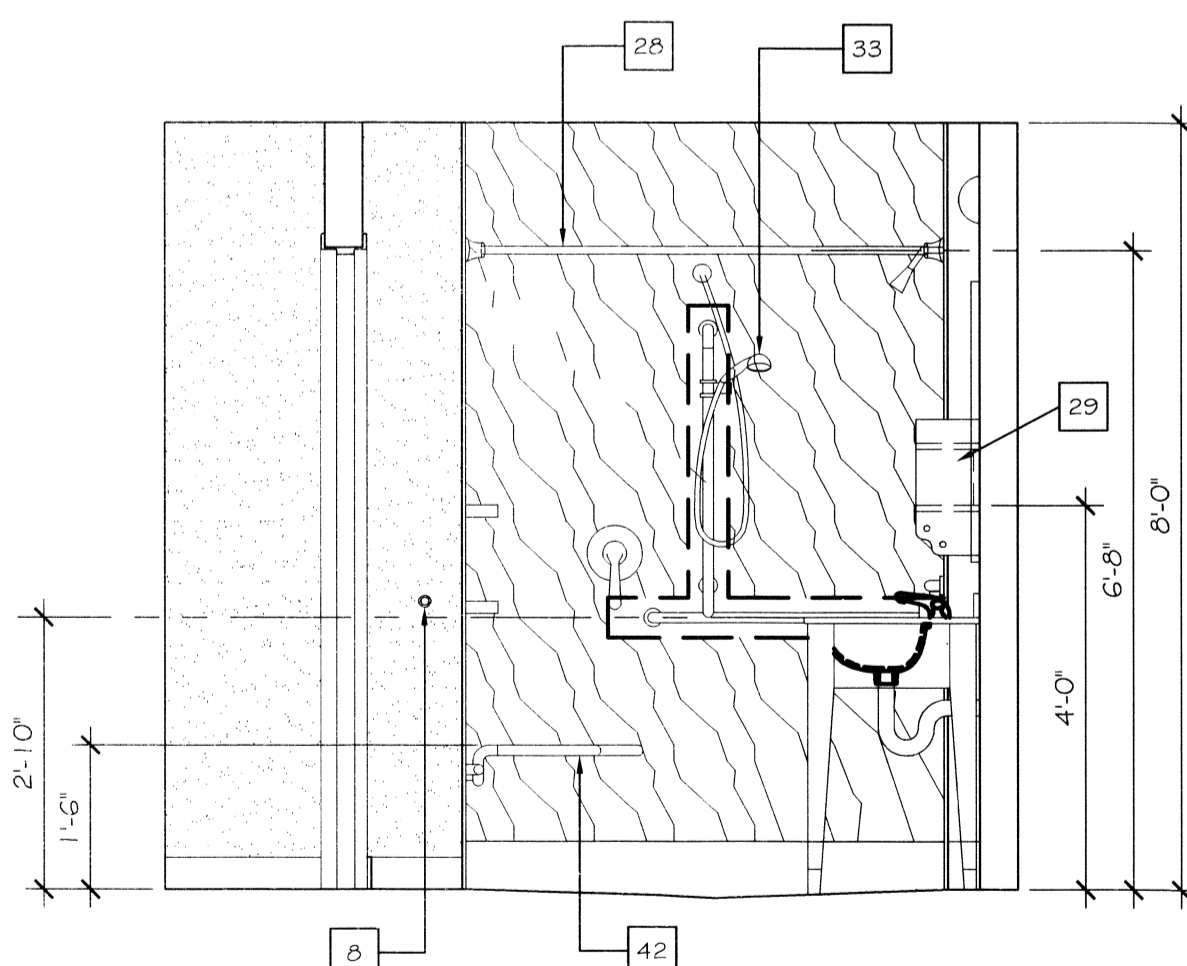
115 BATH ELEVATION
SCALE: 1/2" = 1'-0"



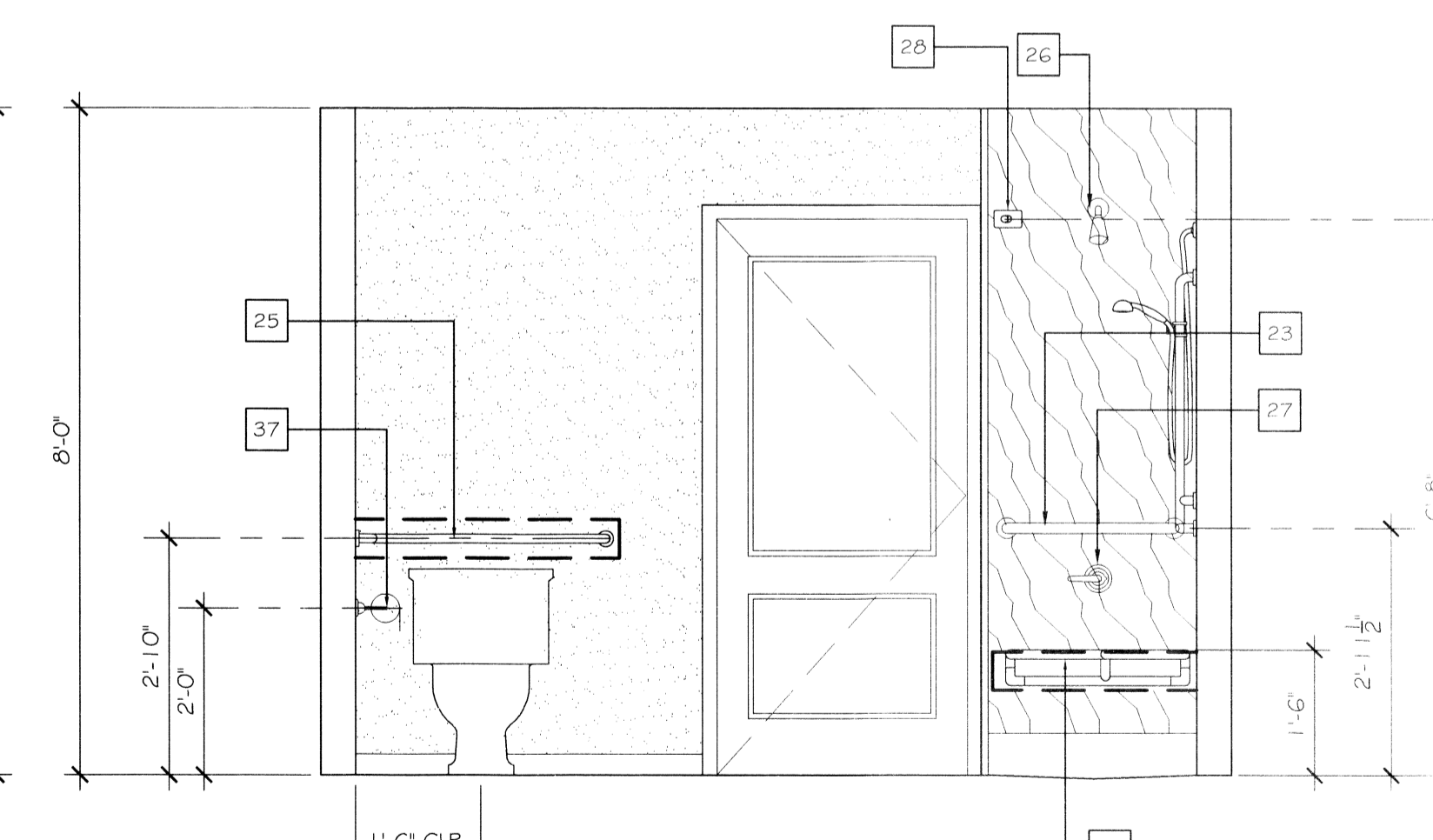
116 BATH ELEVATION
SCALE: 1/2" = 1'-0"



117 BATH ELEVATION
SCALE: 1/2" = 1'-0"



118 BATH ELEVATION
SCALE: 1/2" = 1'-0"



119 BATH ELEVATION
SCALE: 1/2" = 1'-0"

REFER DRAWING A410 FOR XX KEYNOTES

SEE F.F.E. SCHEDULE PER SELECTED INTERIOR DESIGN SCHEME, REFER TO A-16 FOR PARTITION TYPES

- GENERAL NOTES**
- ELECTRICAL OUTLETS IN ADJACENT ROOMS OF THE SAME TYPE SHALL BE OFFSET A MAXIMUM OF 8" 4 SEP. BY STUD.
 - REFER TO BUILDING PLANS FOR LOCATION OF GUEST ROOM TYPES
 - ALL PLAN DIMENSIONS ARE TO FACE OF STUD
- REFERENCE FINISH SELECTION BOOK FOR PAINT AND MATERIAL LEGEND. XX

NO.	REVISIONS

