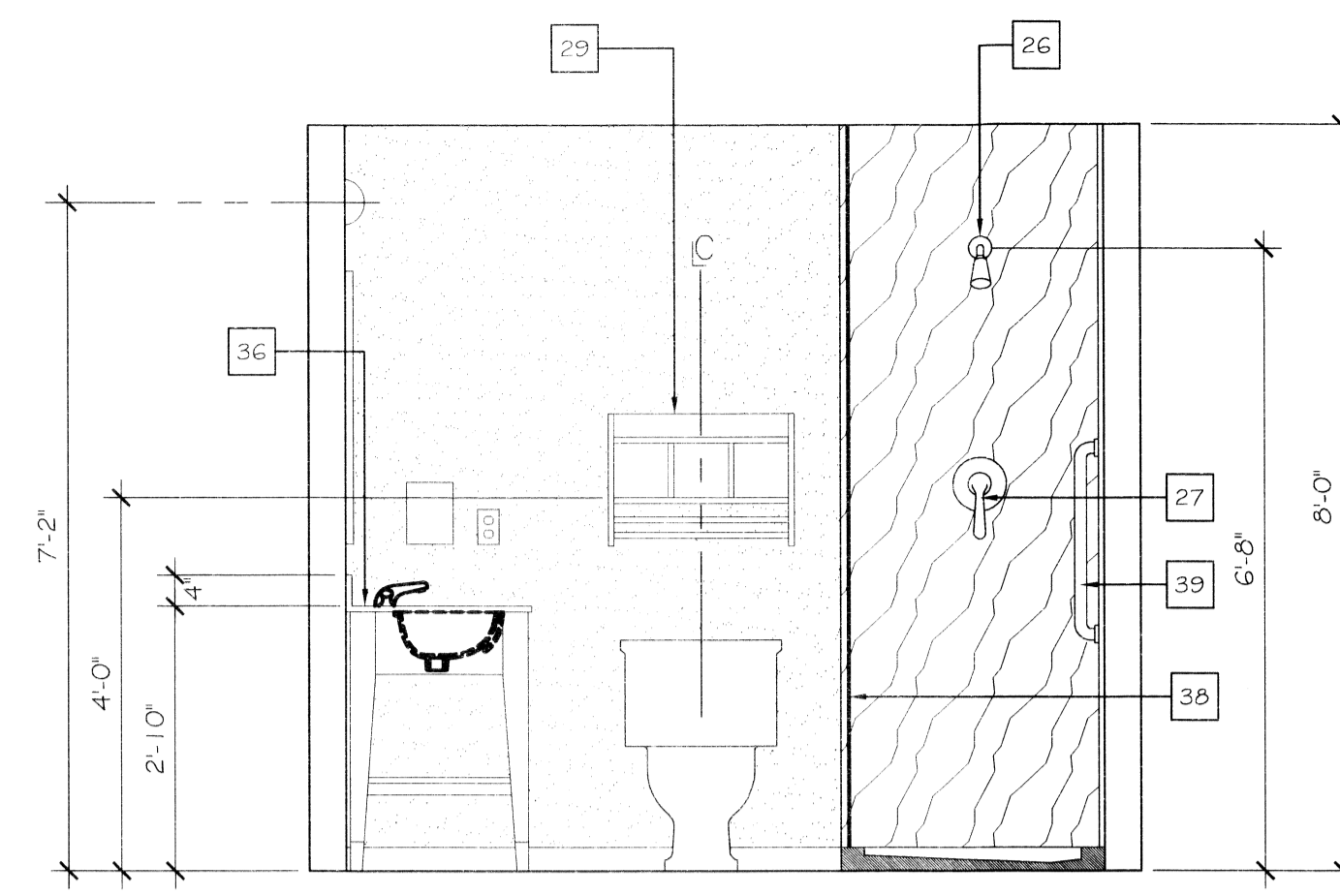
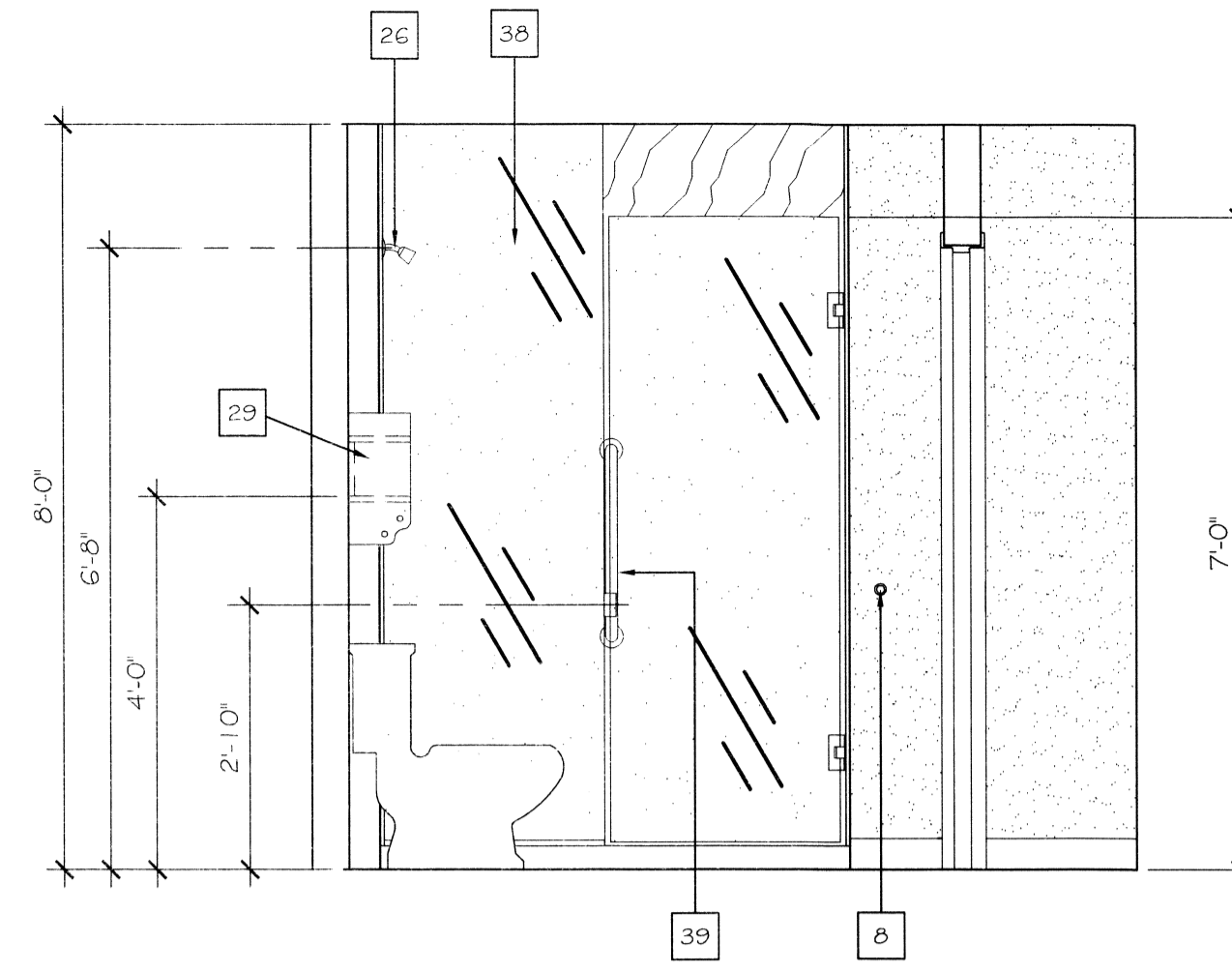


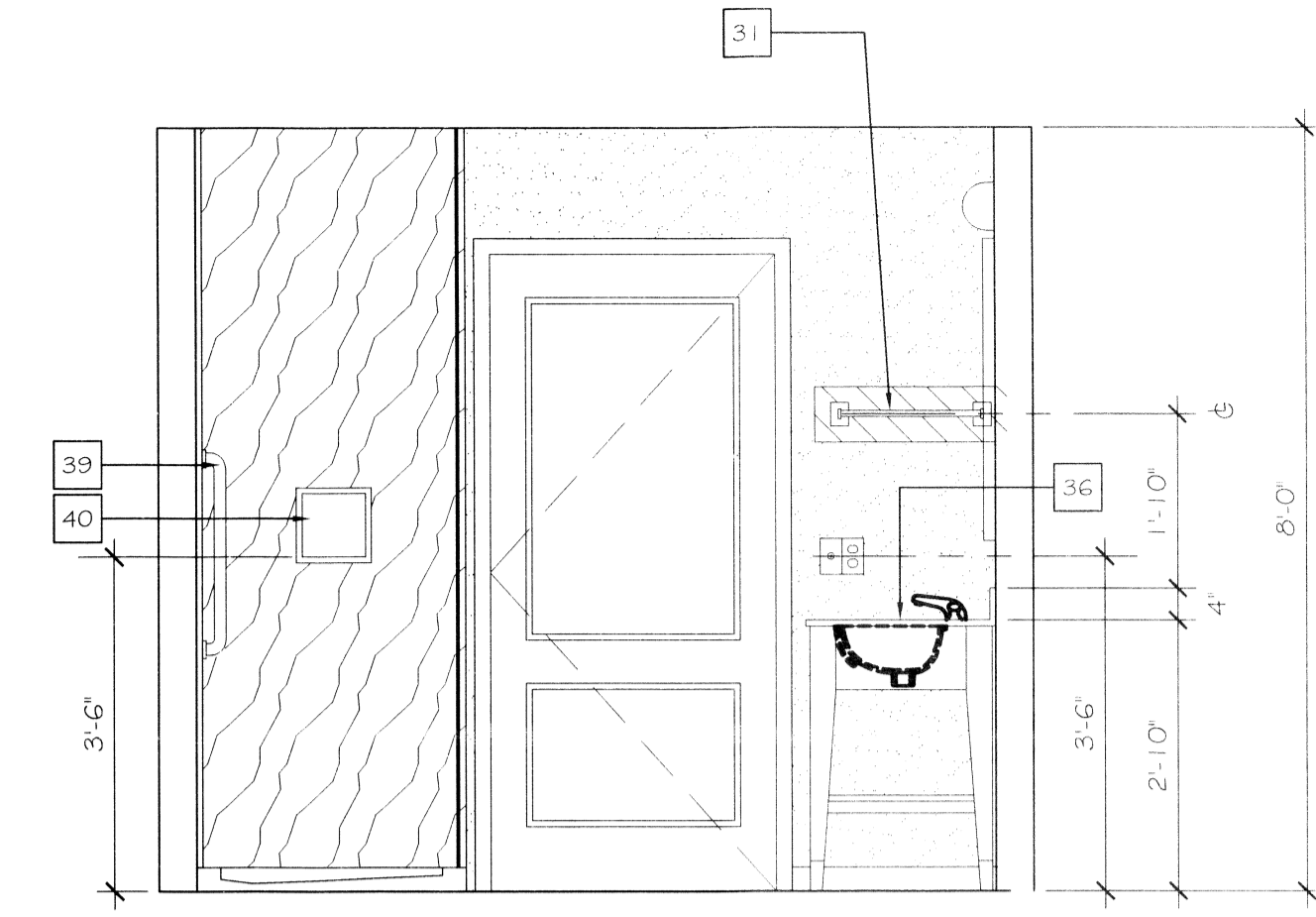
120 BATH ELEVATION
SCALE: 1/2" = 1'-0"



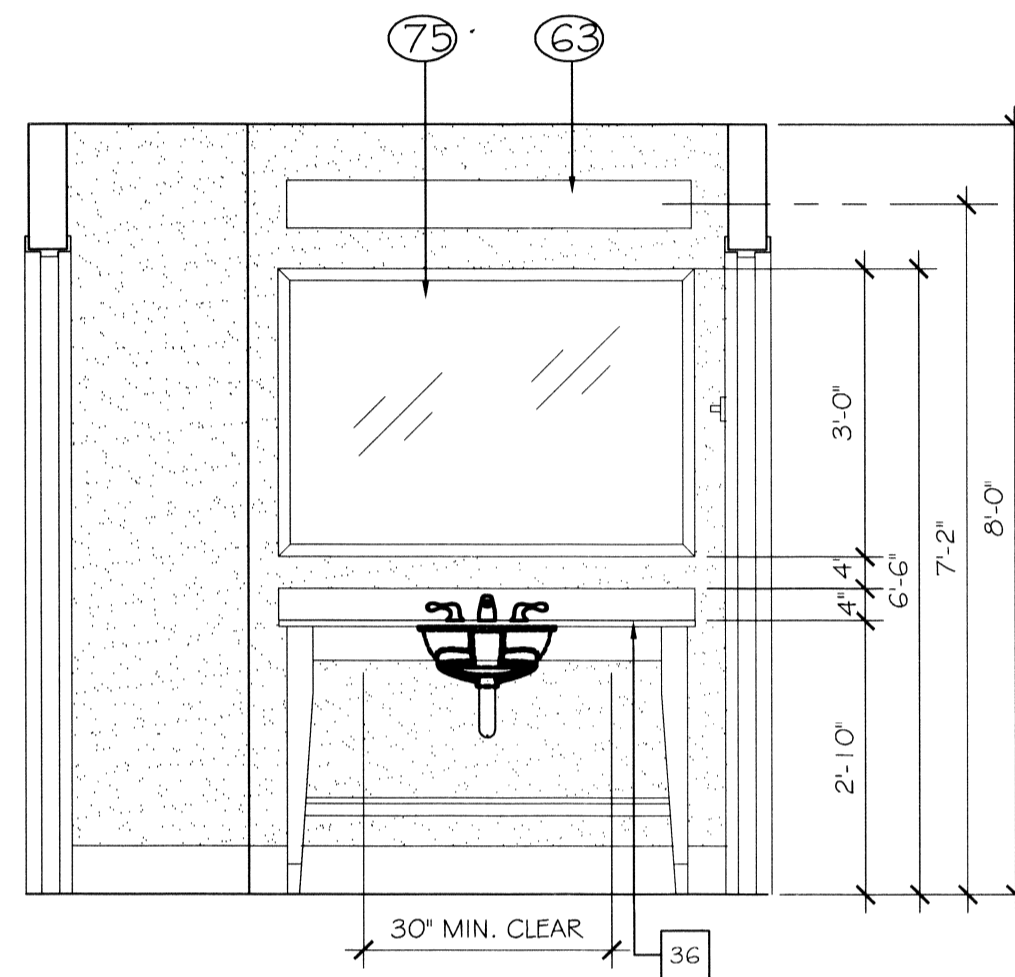
121 BATH ELEVATION
SCALE: 1/2" = 1'-0"



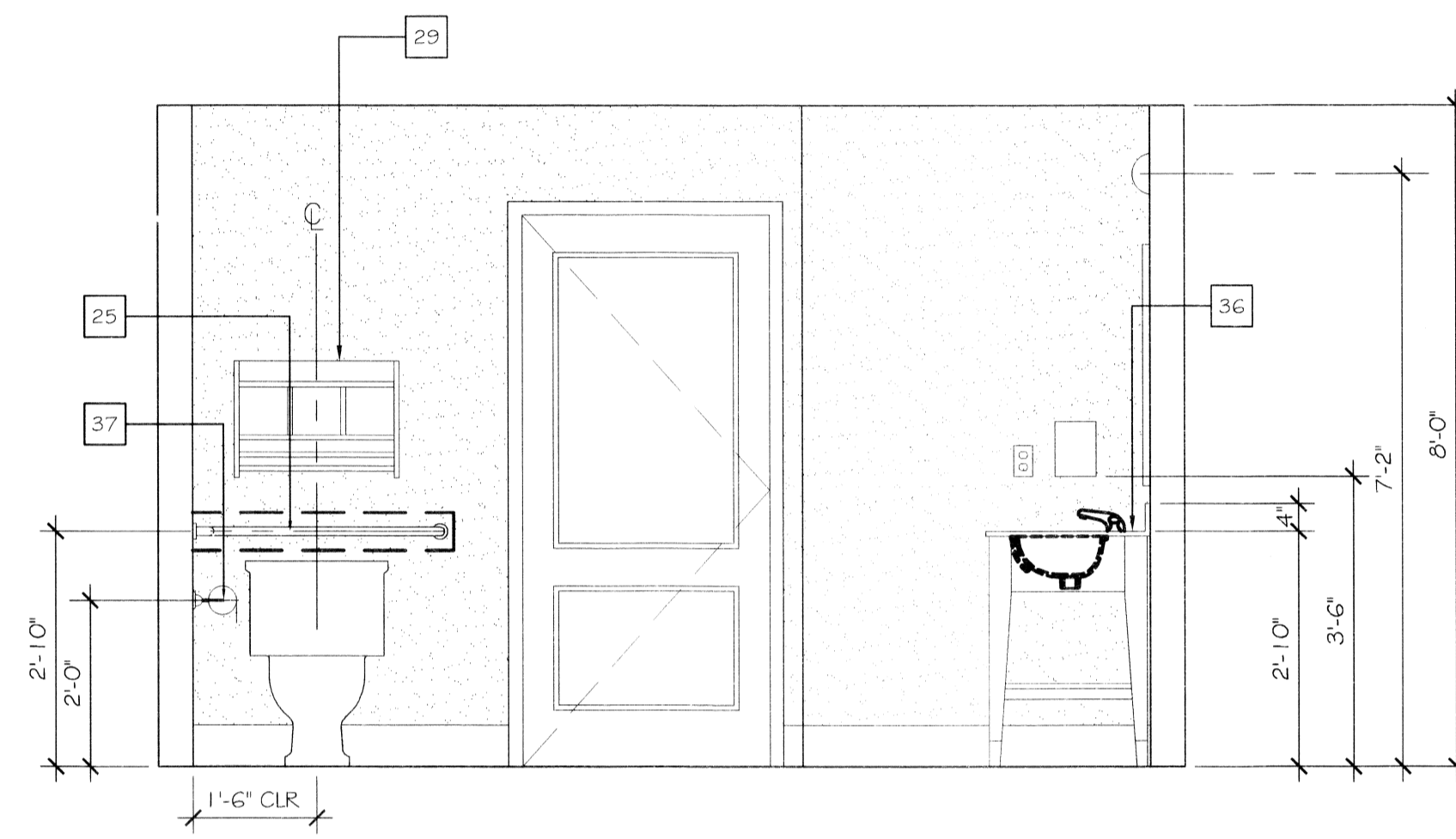
122 BATH ELEVATION
SCALE: 1/2" = 1'-0"



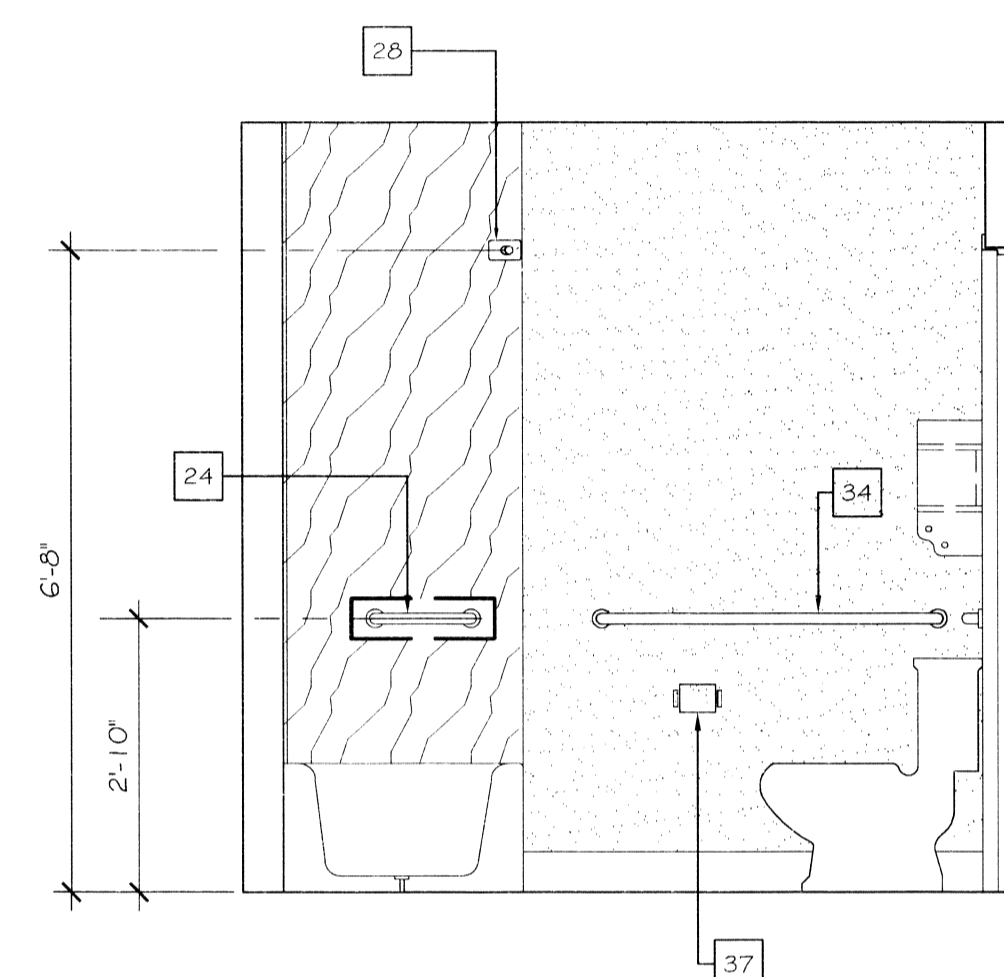
123 BATH ELEVATION
SCALE: 1/2" = 1'-0"



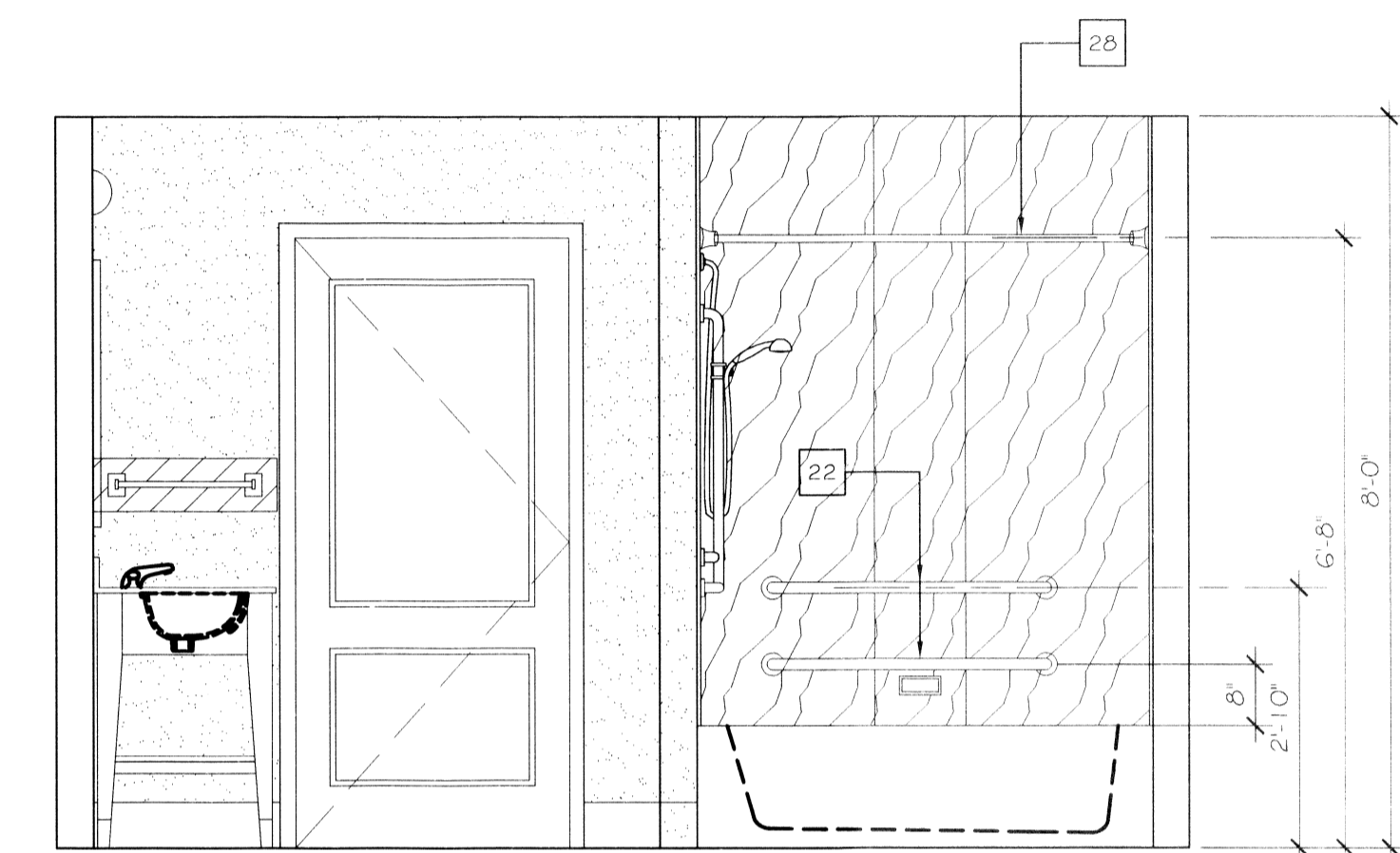
124 BATH ELEVATION
SCALE: 1/2" = 1'-0"



125 BATH ELEVATION
SCALE: 1/2" = 1'-0"



126 BATH ELEVATION
SCALE: 1/2" = 1'-0"



127 BATH ELEVATION
SCALE: 1/2" = 1'-0"

REFER DRAWING A410 FOR **XX** KEYNOTES

SEE F.F.E. SCHEDULE PER SELECTED INTERIOR DESIGN SCHEME.
REFER TO A-16 FOR PARTITION TYPES

- GENERAL NOTES**
- ELECTRICAL OUTLETS IN ADJACENT ROOMS OF THE SAME TYPE SHALL BE OFFSET A MAXIMUM OF 8" & SEP. BY STUD.
 - REFER TO BUILDING PLANS FOR LOCATION OF GUEST ROOM TYPES
 - ALL PLAN DIMENSIONS ARE TO FACE OF STUD
- REFERENCE FINISH SELECTION BOOK PER SELECTED DESIGN SCHEME. **XX**

DAMMON ENGINEERING, INC.
Architects & Engineers

dammonengineering.com
dammoneng@bellsouth.net
PHONE: 905-649-8802
FAX: 905-649-1270

CHIEF ENGINEER: BRIAN MISTICH, P.E.
CHIEF ARCHITECT: KEVIN KINGHEN
554 OLD SPANISH TRAIL
SHELLE, LA 70686

LAQUINTA INNS & SUITES

547 LAQUINTA DRIVE
WESTMINSTER, LOUISIANA 71292

JOB No: 2196 DATE: 02-03-2014
DRAWN BY: JTL CHECKED BY: CKD

| NO. | REVISIONS |
|-----|-----------|
| | |
| | |
| | |
| | |



GUESTROOM BATH INTERIOR ELEVATIONS

SHEET No: 42 OF 53

A34