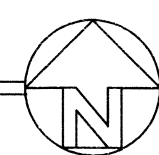


FIRST FLOOR REFLECTED CEILING PLAN

SCALE: 1/8" = 1'-0"



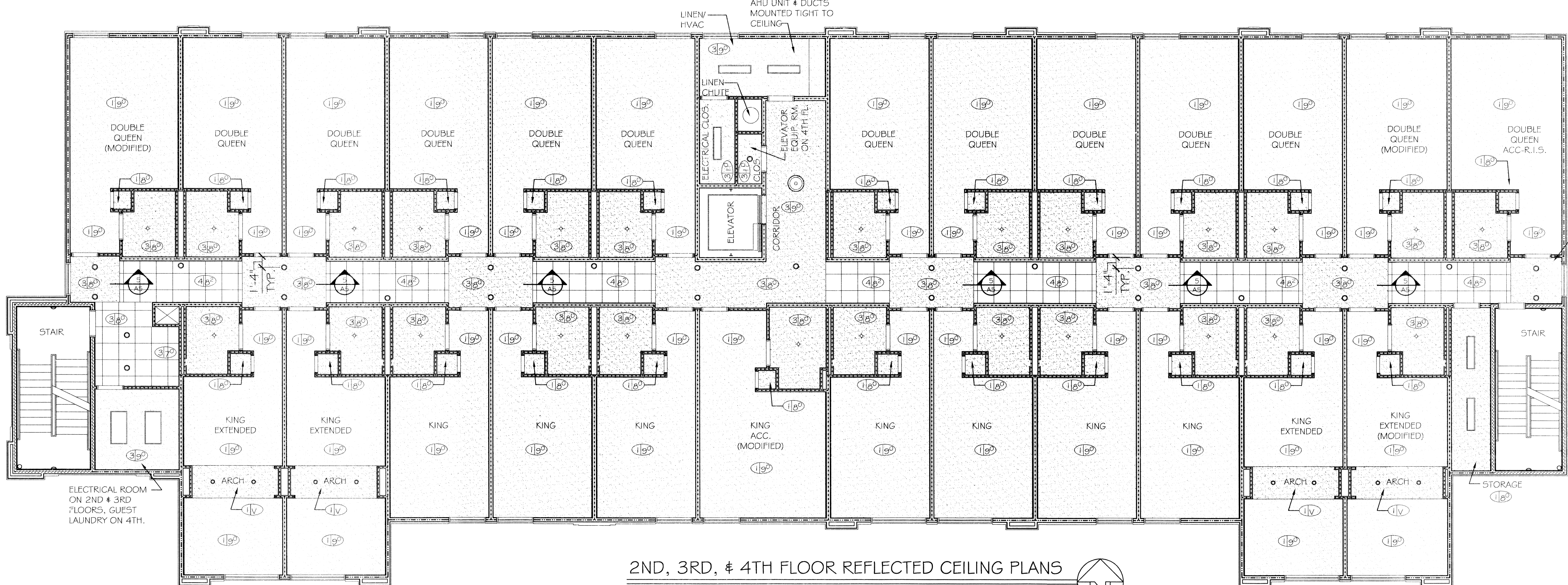
CEILING SYMBOL LEGEND

	CEILING TYPE/ CEILING HEIGHT V=VARIES
	SUSPENDED CEILING TILE 2X4
	SUSPENDED CEILING TILE 2X2
	5/8" GYPSUM BOARD CEILING
	SUPPLY AIR CEILING DIFFUSER RE: MECHANICAL
	RETURN AIR CEILING DIFFUSER RE: MECHANICAL
	LINEAR DIFFUSER RE: MECHANICAL
	EXHAUST FAN REGISTER RE: MECHANICAL

CEILING TYPE LEGEND

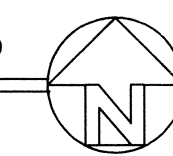
1	INTERIOR TEXTURE COATING OVER SUSPENDED/FURRED GYPSUM BOARD
2	EXTERIOR TEXTURE COATING OVER SUSPENDED/ FURRED GYPSUM BOARD
3	SUSPENDED/FURRED GYPSUM BOARD - PAINT
4	SUSPENDED CEILING TILE 2X2
5	SUSPENDED CEILING TILE 2X4 TILE TO COMPLY WITH HEALTH CODE

- NOTES**
1. REFER TO SHEETS E1 & E2 FOR LIGHTING FIXTURES.
 2. REFER ENLARGED GUEST ROOM PLAN SHEETS FOR GUESTROOM LIGHTING FIXTURES.
 3. REFER PROTOTYPE FINISH MATERIAL LIST FROM STANDARDS INFORMATION PACKAGE FOR CEILING PAINT DETAILS.
 4. INSTALL FIRE RATED SUB CEILING AS MAY BE REQUIRED BY LOCAL CODES.

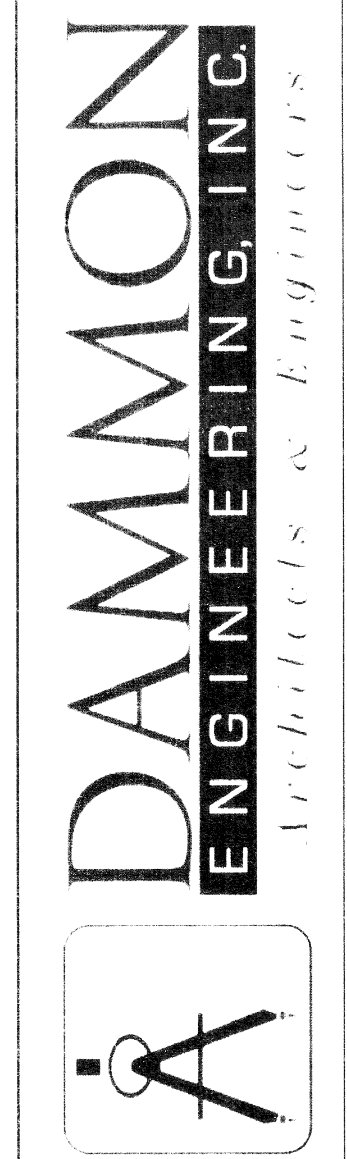


2ND, 3RD, & 4TH FLOOR REFLECTED CEILING PLANS

SCALE: 1/8" = 1'-0"

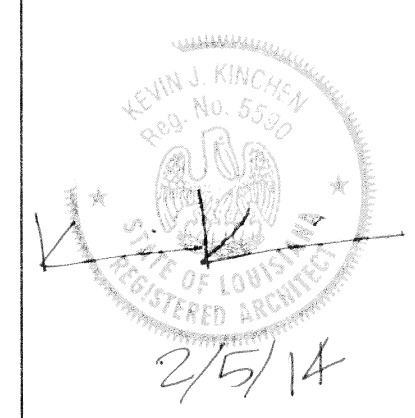


LAQUINTA INNS & SUITES



CHIEF ENGINEER: BRIAN MISTICH, P.E.
 4815 W. CENTRAL EXPRESSWAY, SUITE 100
 WESTLAKE, CALIFORNIA 91361
 PHONE: 951.649.5832
 FAX: 951.649.5830
 www.dammoneng.com

JOB No: 2196 DATE: 02-03-2013 CHECKED BY: CKD
 DRAWN BY: JTL



REFLECTED CEILING PLANS

SHEET No: 12 OF 53

A4