

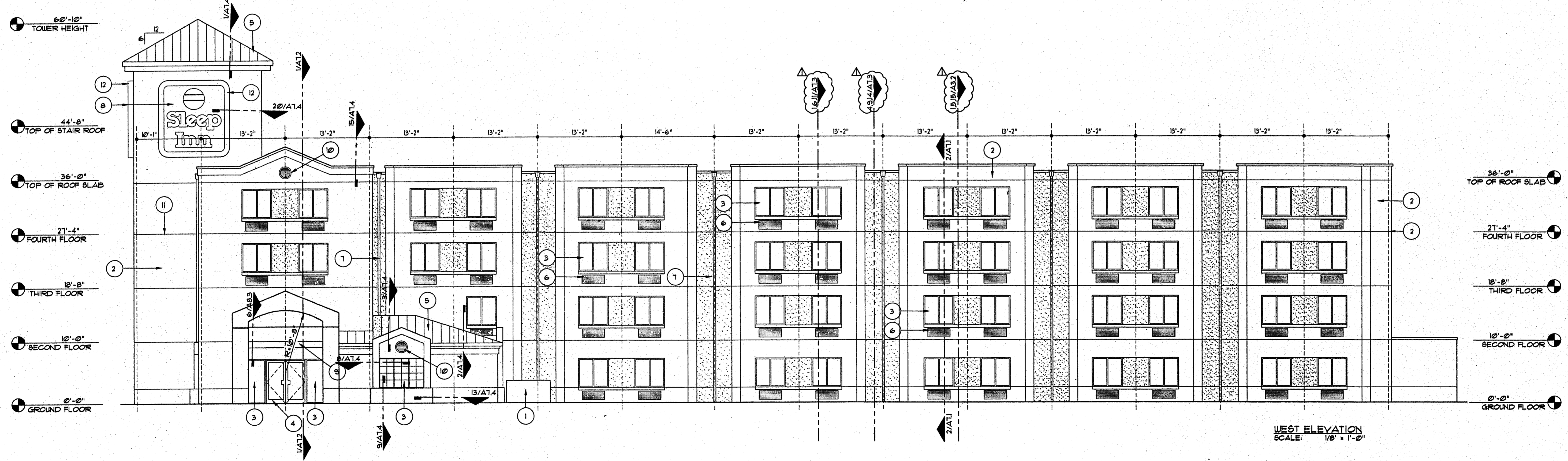
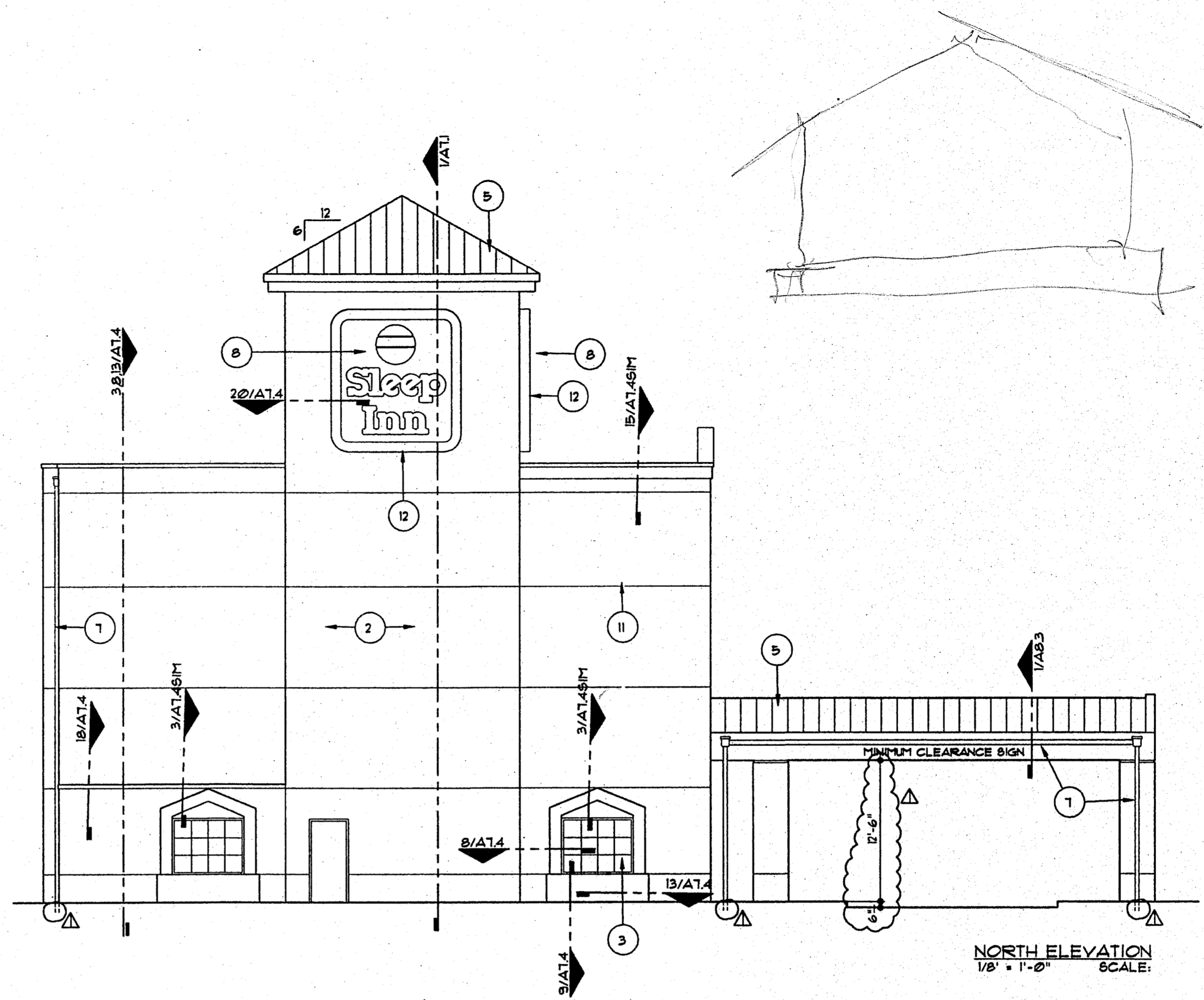
**BUILDING MATERIALS/COLORS**

STANDING BEAM METAL ROOF  
 COLOR: TO BE DETERMINED  
 STUCCO/DRYVIT:  
 MAIN BUILDING COLOR: DRYVIT #103 (NATURAL WHITE)  
 ACCENT COLOR: (INDICATED BY SHADING) DRYVIT # 493 (STAINLESS)  
 WINDOW TRIM: ANODIZED BRONZE ALUMINUM FRAMES  
 EXTERIOR DOORS/FRAMES: PAINT TO MATCH DRYVIT # 103  
 SIGN: YELLOW LETTERS/LOGO ON BLACK BACKGROUND  
 HVAC LOUVERS: PAINT TO MATCH EIFS.  
 GUTTERS, BOX GUTTERS & DOWNSPOUTS: PAINT TO MATCH EIFS.

**NOTES**

1. SCREEN WALL
2. EXTERIOR FINISH SYSTEM
3. WINDOW - SEE FLANS
4. DOOR - SEE FLANS
5. STANDING BEAM METAL ROOF- SEE SPECS
6. THRU WALL HVAC UNIT - SEE MECHANICAL DRAWINGS
7. GUTTER OR DOWNSPOUT
8. BUILDING SIGN - PROVIDE BLOCKING AS REQUIRED BY MANUFACTURER
9. ACCENT BEAM AT PORTE COCHERE
10. 16" DIAMETER VENT LOUVER (PAINT TO MATCH EIFS)
11. SCORE JOINT IN EIFS
12. 8" x 8" EIFS BAND

- 6'-0"-10" TOWER HEIGHT
- 44'-8" TOP OF STAIR ROOF
- 36'-0" TOP OF ROOF SLAB
- 21'-4" FOURTH FLOOR
- 18'-8" THIRD FLOOR
- 10'-0" SECOND FLOOR
- 0'-0" GROUND FLOOR



**EXTERIOR ELEVATIONS**  
SCALE: 1/8" = 1'-0"