

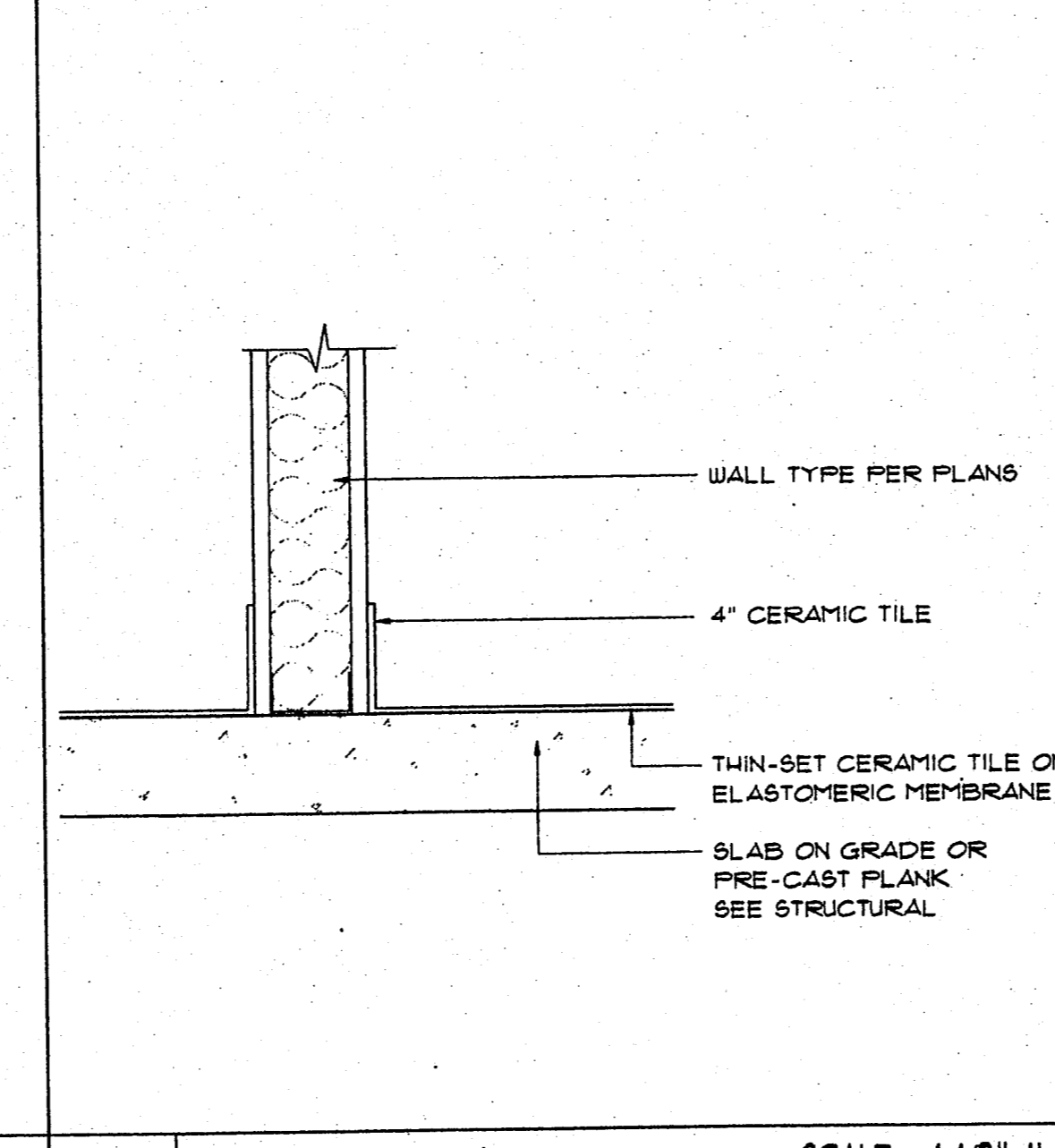
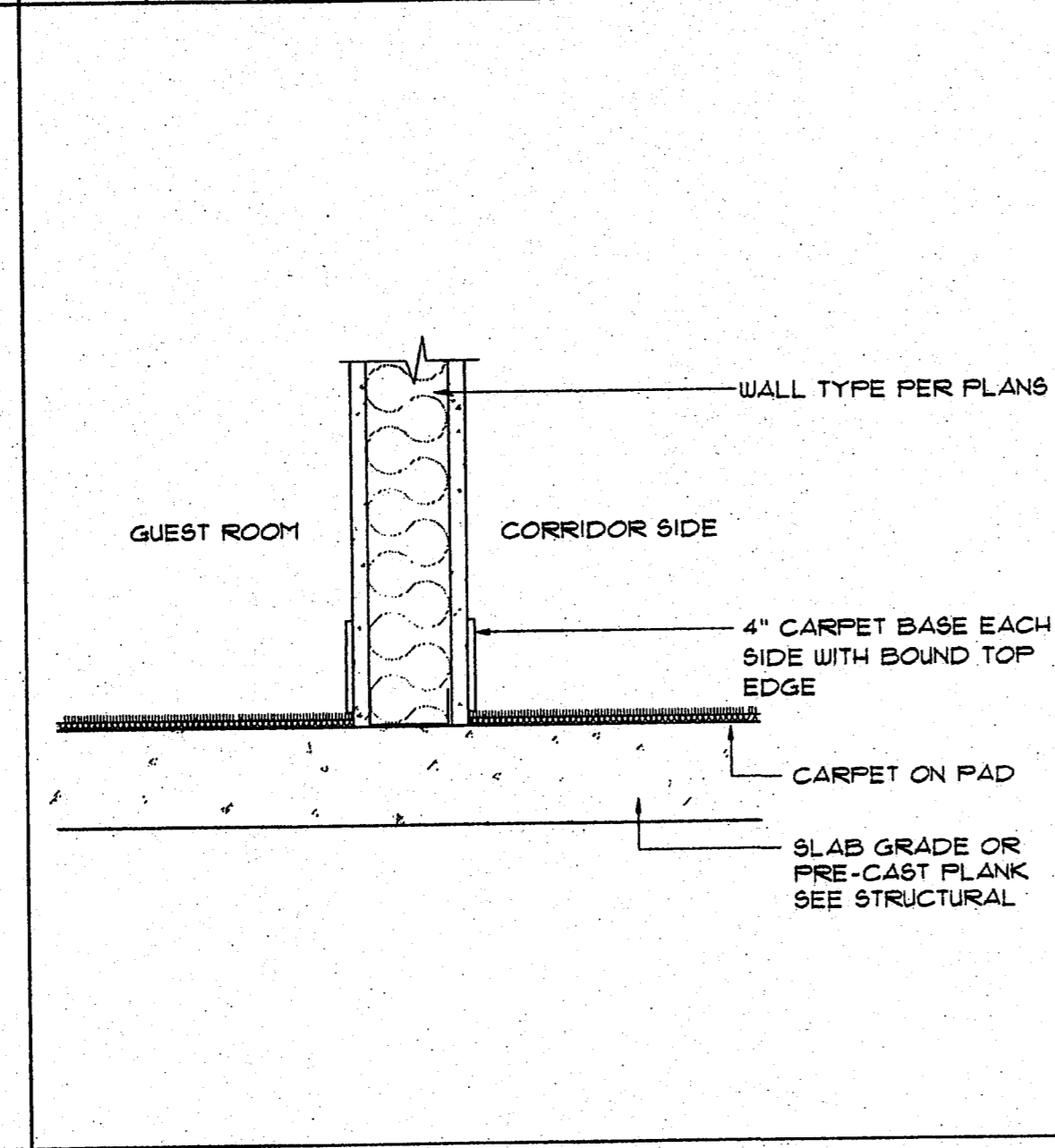
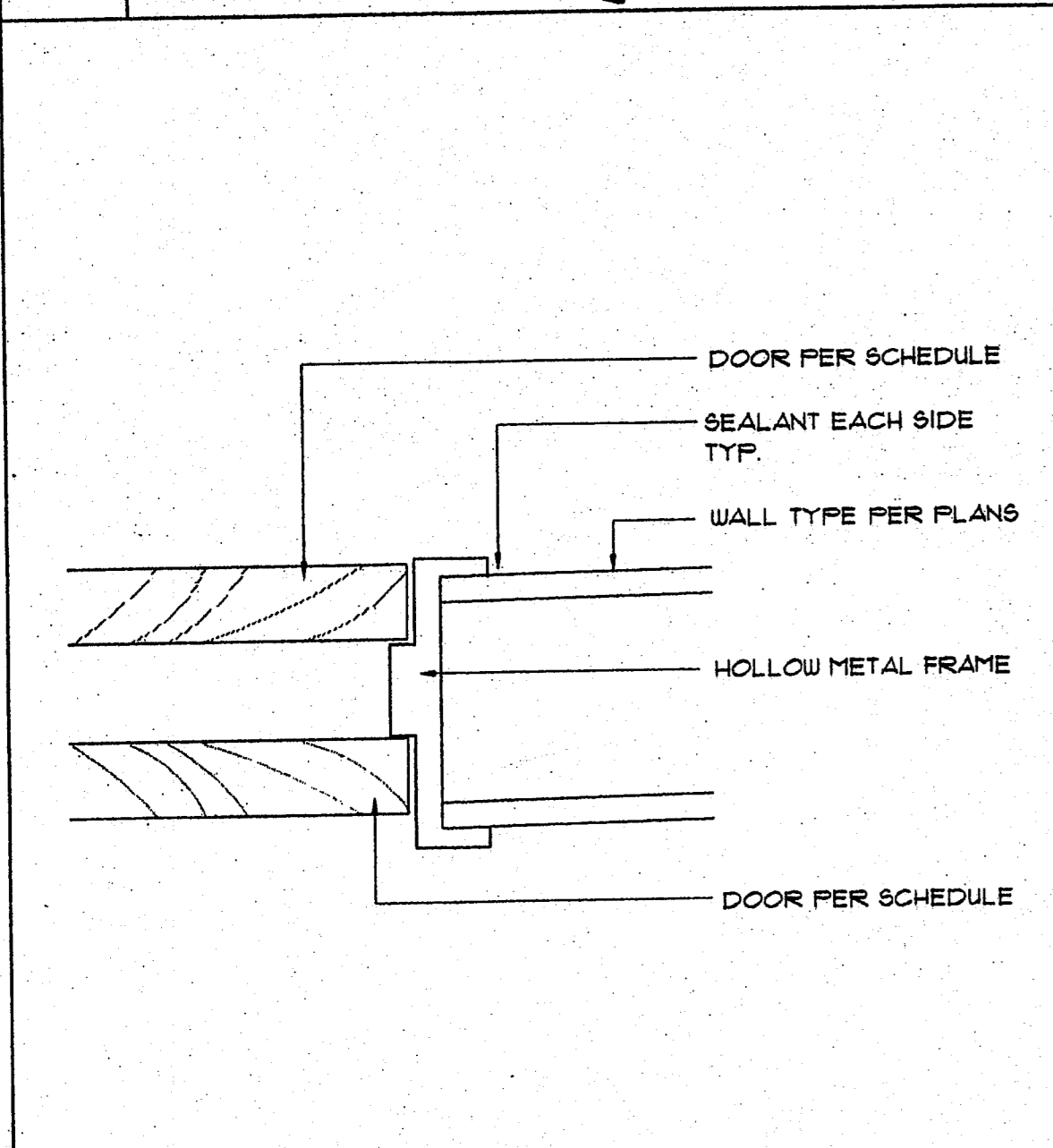
1 Section Detail Guest Room Connecting Door SCALE: 3" = 1'-0"

2 Section Detail Guest Bath Threshold SCALE: 3" = 1'-0"

3 Section Detail Guest Room Entry Door SCALE: 3" = 1'-0"

4 Section Detail Pocket Door Head SCALE: NONE

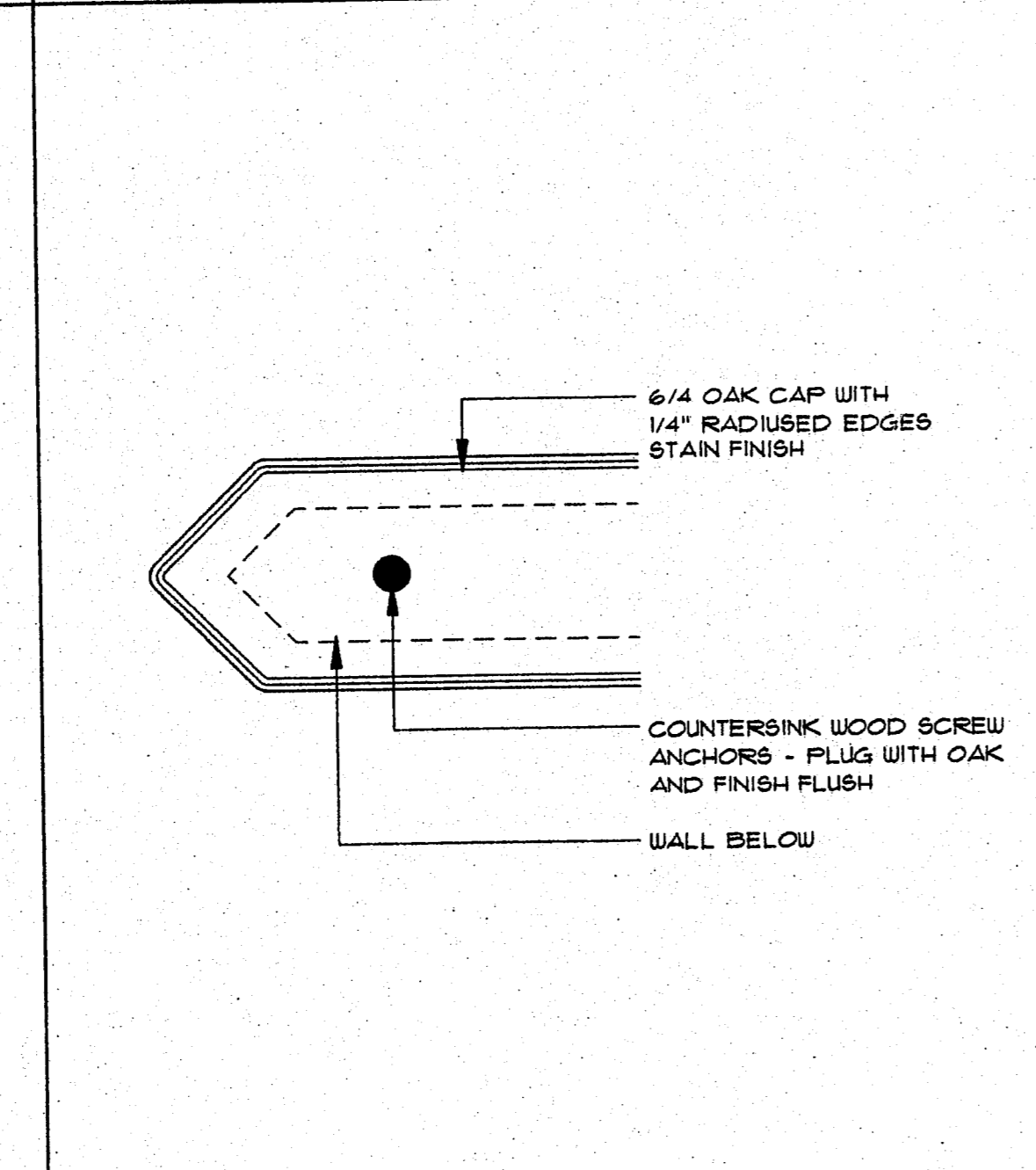
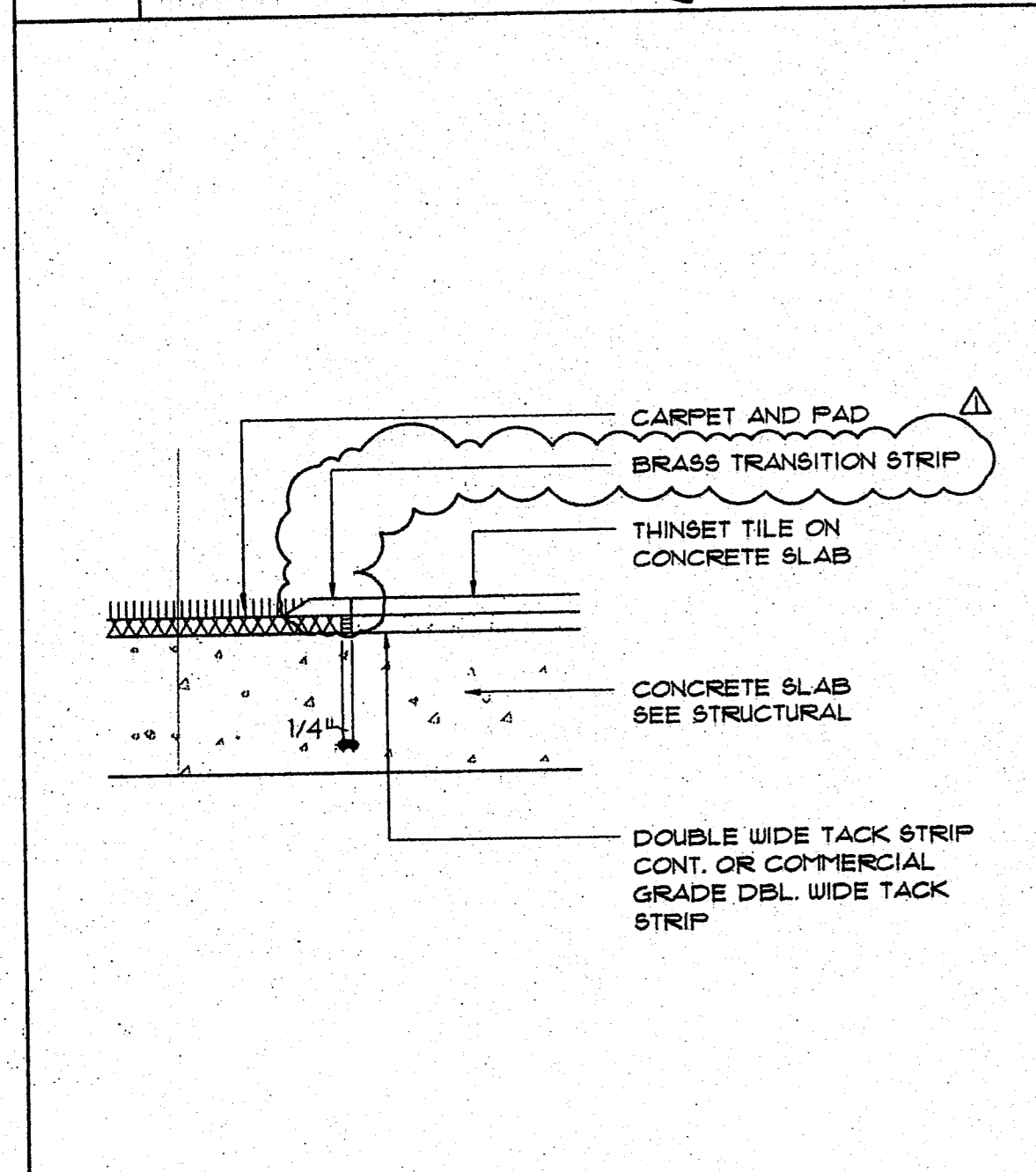
5 Section Detail Pocket Door SCALE: NONE



6 Section Detail Head & Jamb of Connecting Door SCALE: 3" = 1'-0"

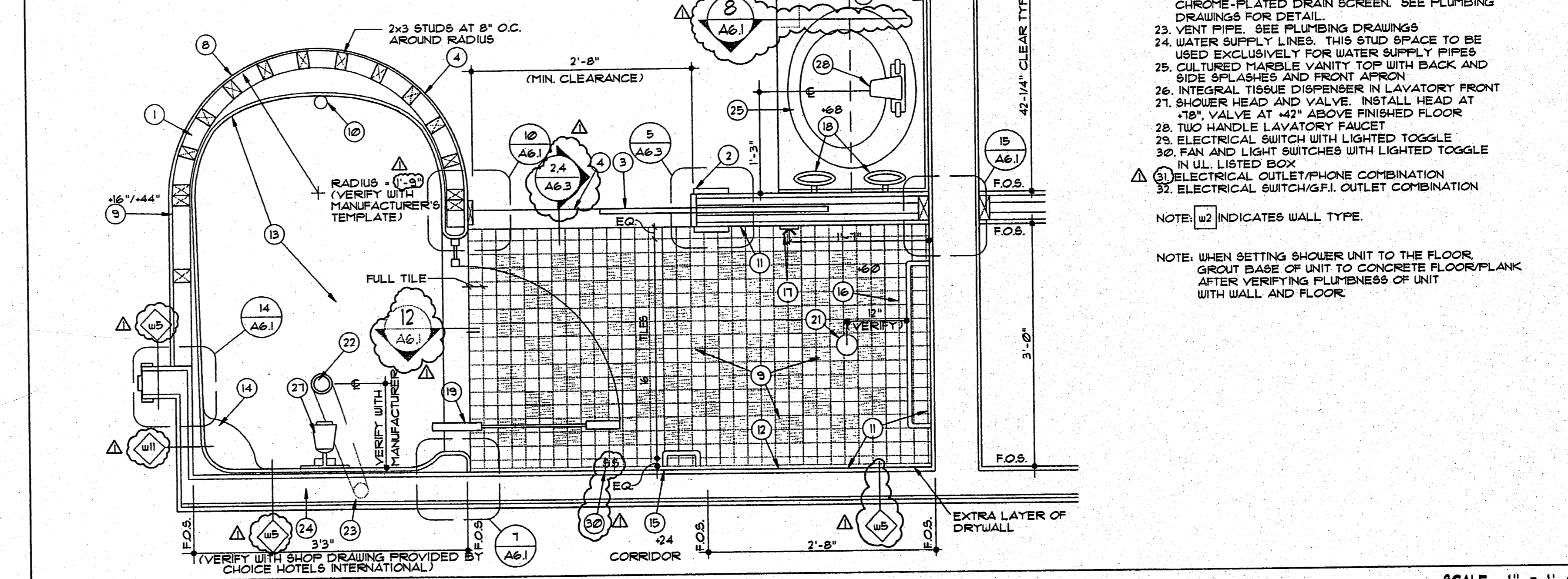
7 Section Detail Corridor & Guest Room Base SCALE: 1 1/2" = 1'-0"

8 Section Detail Wall of Guest Room Baths SCALE: 1 1/2" = 1'-0"



11 Section Detail Carpet Joint @ Lobby SCALE: NONE

12 Plan Detail End Condition @ Oak Cap SCALE: NONE



13 Plan Detail Typical Guest Room Bath SCALE: 1" = 1'-0"

NOTES

- 3/4" PLYWOOD TEMPLATE, 2 LAYERS EACH AT TOP AND BOTTOM OF STUDS. (SUPPLIED BY SHOWER MANUFACTURER)
 - 3/4" PAINT GRADE WOOD TRIM
 - PRE-HUNG POCKET DOOR (SEE SCHEDULE)
 - CULTURED MARBLE THRESHOLD (3" WIDE)
 - NOT USED
 - NOT USED
 - 40" x 48" PLATE GLASS MIRROR WITH UNFRAMED, POLISHED EDGES (VERIFY SIZE)
 - VINYL WALL COVERING ON ONE LAYER 1/8" THICK
 - UNTEMPERED HARDBOARD (MASONITE) AND 1/4" THICK HIGH FLEX WALL BOARD (10'-0" LONG). NO VERTICAL JOINTS ON RADIUS.
 - JUNCTION BOX FOR ELECTRICAL OUTLET AT 16" AFF. JB FOR LIGHT SWITCH AT 44" AFF. (ON CENTER)
 - FACTORY INSTALLED GRAB BAR
 - 4" HIGH WHITE CERAMIC TILE BASE
 - VINYL WALL COVERING
 - PRE-MOLDED ACRYLIC SHOWER ENCLOSURE
 - BUILT-IN SOAP SHELF AT 51"
 - SURFACE MOUNTED TOILET PAPER HOLDER
 - 24" TOILET BAR W/BACKING
 - TWIN ROBE HOOK
 - 6" DIAMETER TOWEL RINGS
 - ALUMINUM FRAME SHOWER DOOR ON PIVOT HINGE
 - LINE OF LIGHT VALANCE ABOVE
 - CULTURED MARBLE VANITY TOP WITH BACK AND SIDE SPLASHES AND FRONT APRON
 - INTEGRAL TISSUE DISPENSER IN LAVATORY FRONT
 - SHOWER HEAD AND VALVE. INSTALL HEAD AT 18" VALVE AT 42" ABOVE FINISHED FLOOR
 - TWO HANDLE LAVATORY FAUCET
 - ELECTRICAL SWITCH WITH LIGHTED TOGGLE
 - FAN AND LIGHT SWITCHES WITH LIGHTED TOGGLE IN UL LISTED BOX
 - ELECTRICAL OUTLET/PHONE COMBINATION
 - ELECTRICAL SWITCH/G.F.I. OUTLET COMBINATION
- NOTE: W2 INDICATES WALL TYPE.
- NOTE: WHEN SETTING SHOWER UNIT TO THE FLOOR, GROUT BASE OF UNIT TO CONCRETE FLOOR/PLANK AFTER VERIFYING FLATNESS OF UNIT WITH WALL AND FLOOR.

revisions:
REVIEW 10-14-97

seal:

title:
CONSTRUCTION DETAILS

date: 10-14-97
job: 1697
file: 1697-A63
scale: AS NOTED