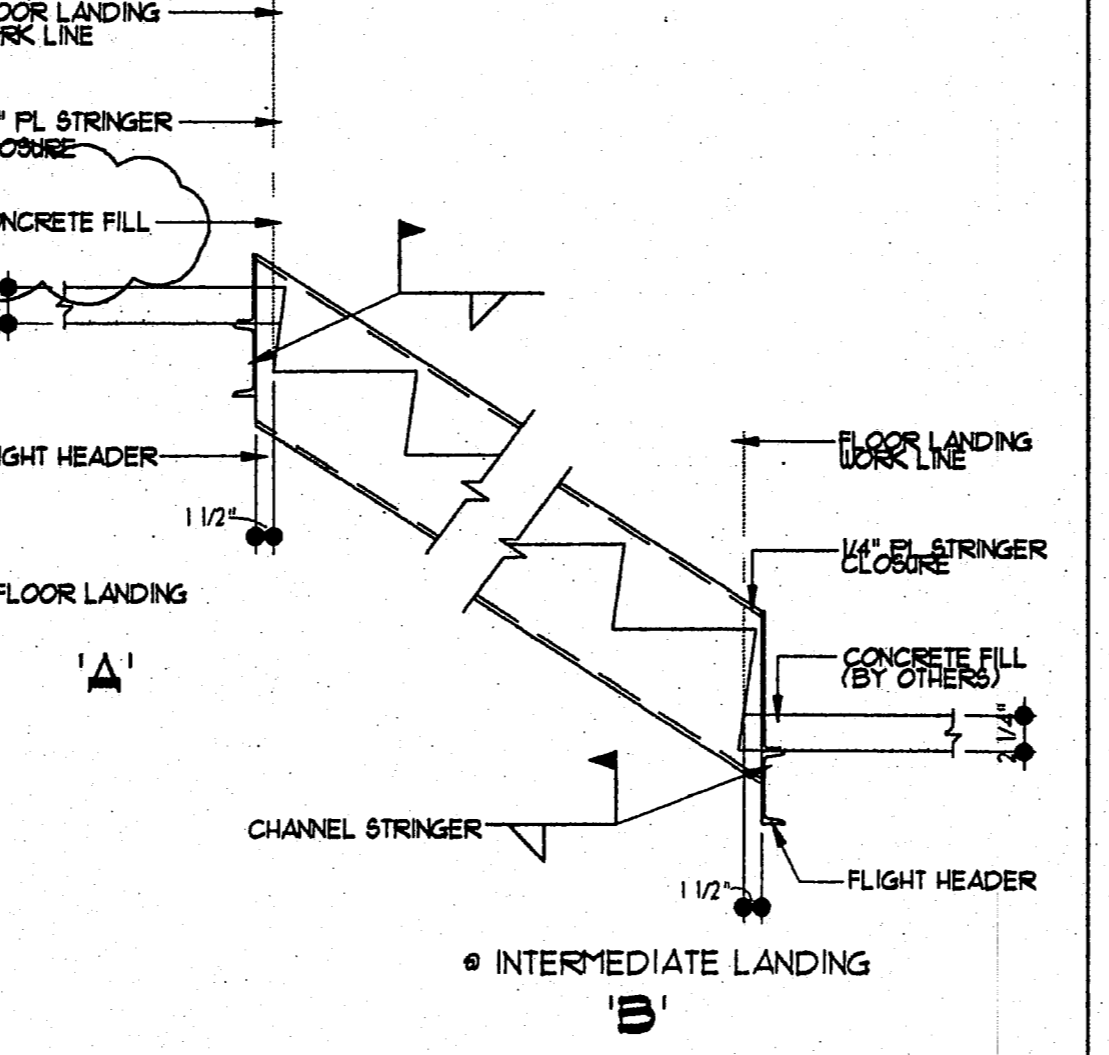
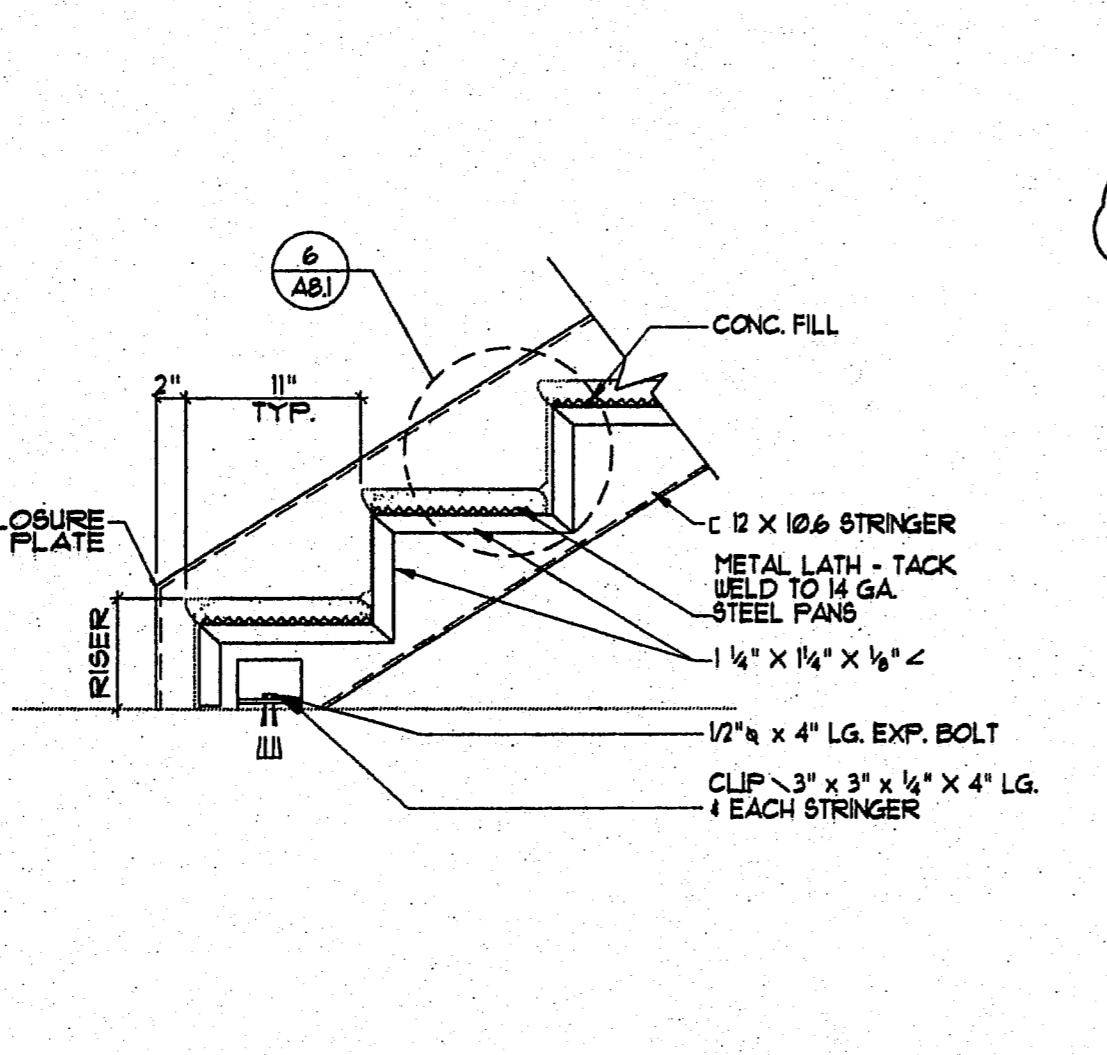
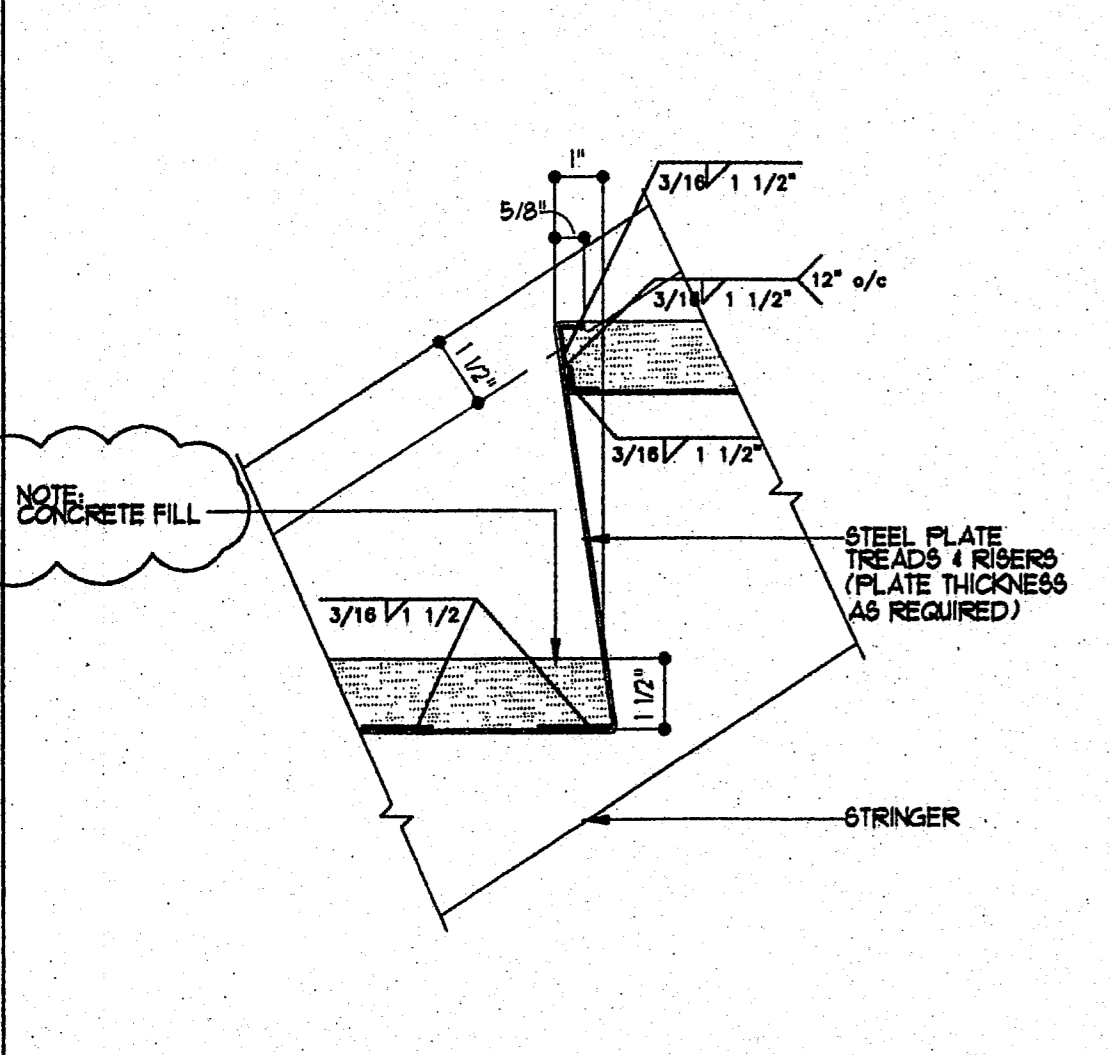


1 Section Detail Stair Tread & Riser SCALE: 1" = 1'-0"

2 Plan Detail Stair Landing SCALE: 1 1/2" = 1'-0"

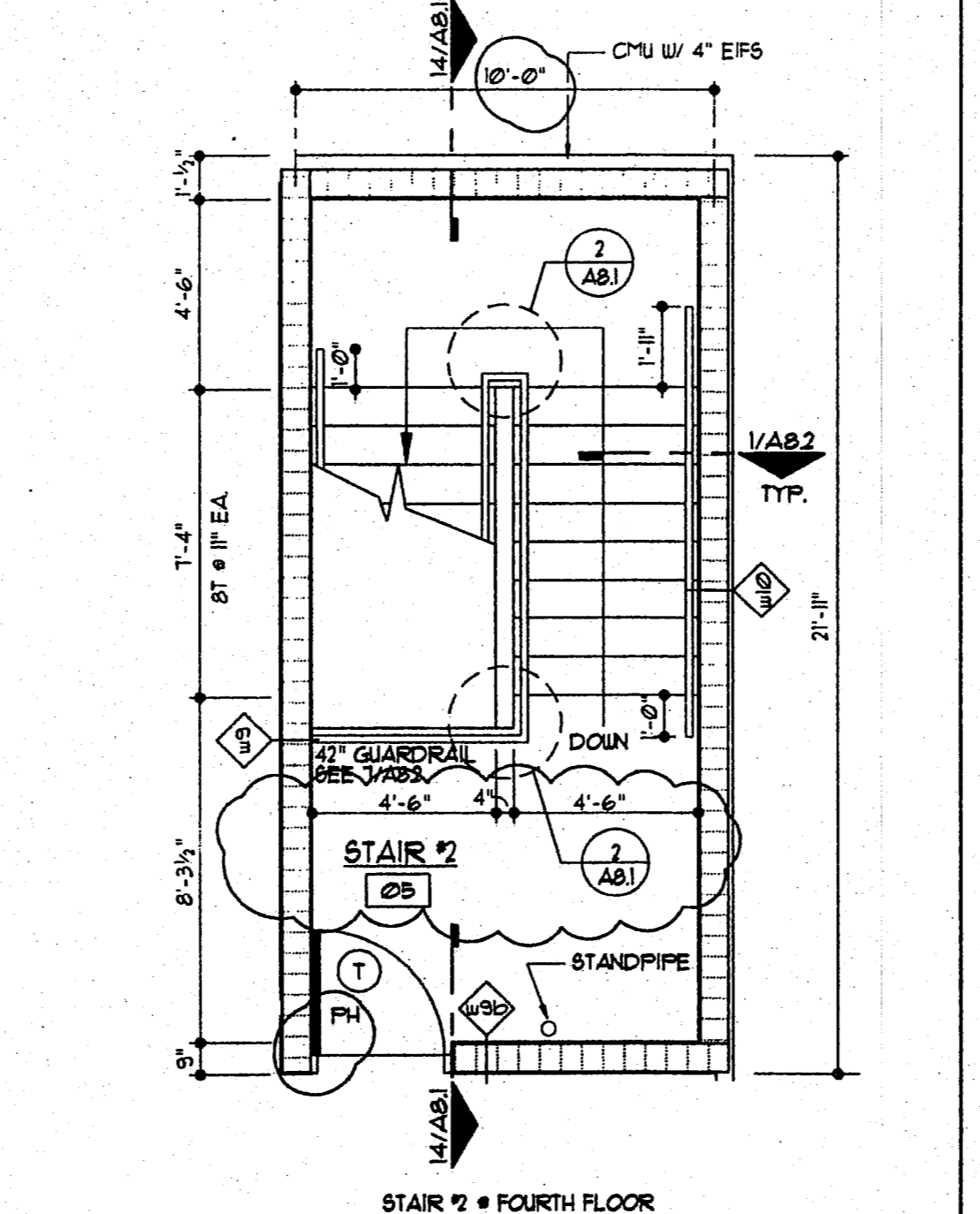
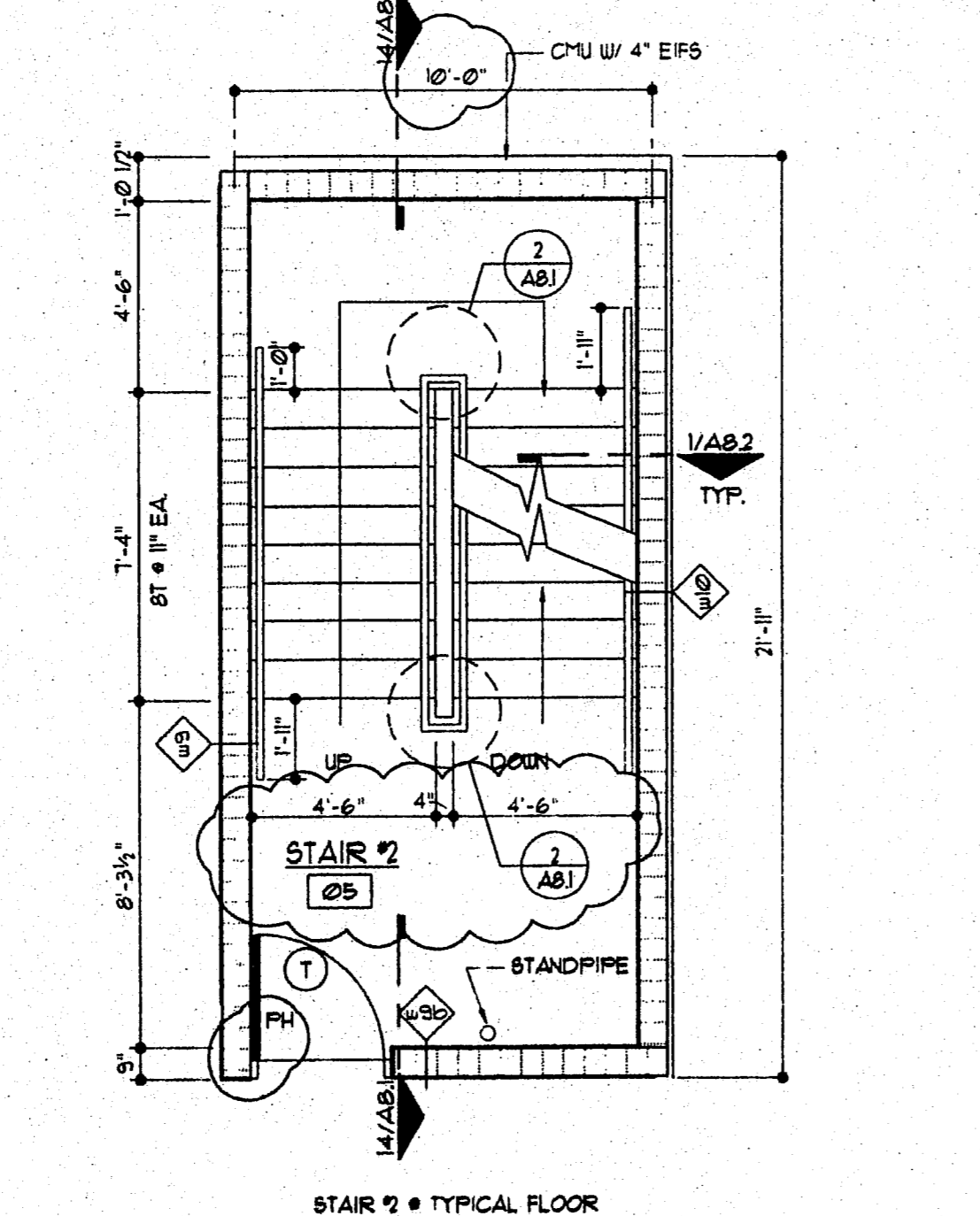
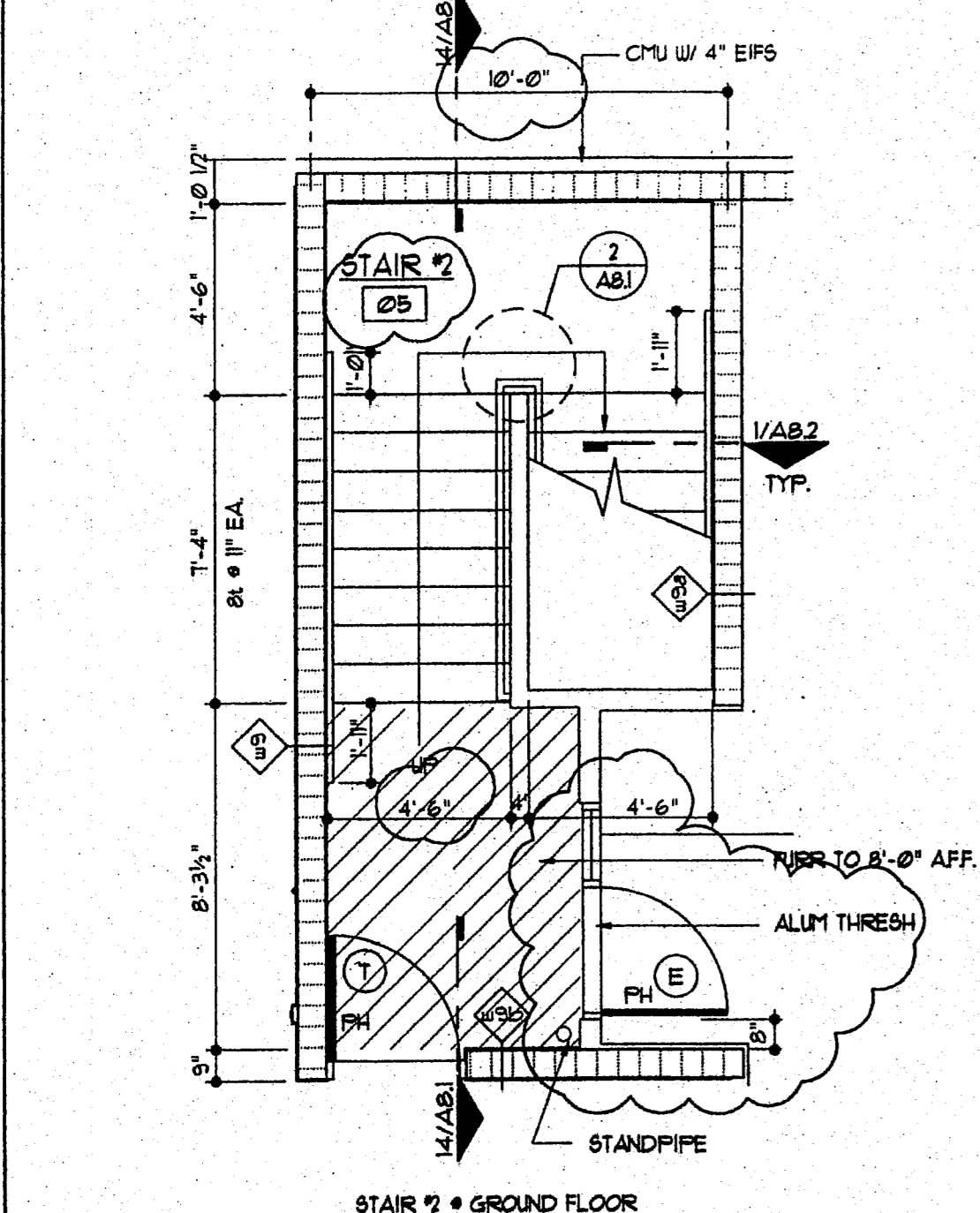
3 Plan Detail Stair #1 SCALE: 1/4" = 1'-0"



6 Section Detail Concrete Filled Tread SCALE: 3/4" = 1'-0"

7 Section Detail Stair Tread & Riser SCALE: 1" = 1'-0"

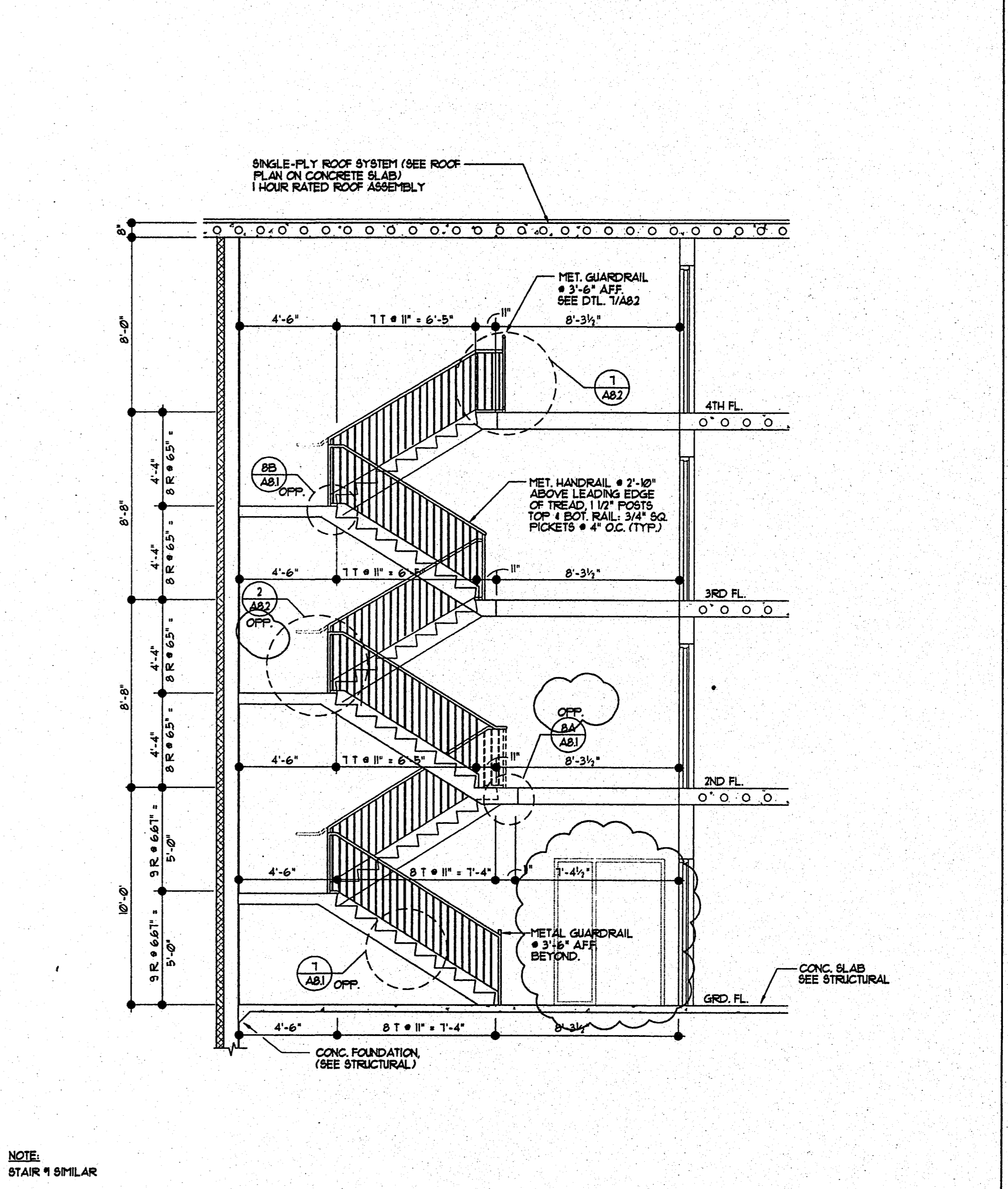
8 Section Detail Stair #1 & #2 @ Landing SCALE: 3/4" = 1'-0"



11 Plan Detail Stair #2 SCALE: 1/4" = 1'-0"

12 Plan Detail Stair #2 SCALE: 1/4" = 1'-0"

13 Plan Detail Stair #2 SCALE: 1/4" = 1'-0"



14 Section Detail Stair #2 SCALE: 1/4" = 1'-0"

LLW, Inc.  
803 SOUTH MT. MORIAH, STE. 100B  
MEMPHIS, TENNESSEE 38117-5343  
901-683-7755/FAX 901-683-2385  
LEONARD MESSINA, ARCHITECT

revisions:

seal:

Step Inn  
Jackson, Mississippi

title:  
STAIR DETAILS

date: 10-14-97  
job: 1697  
file: 1697-AB1  
scale: AS NOTED

sheet  
A8.1  
of 34