

revisions:
 REVIEW 10-14-97

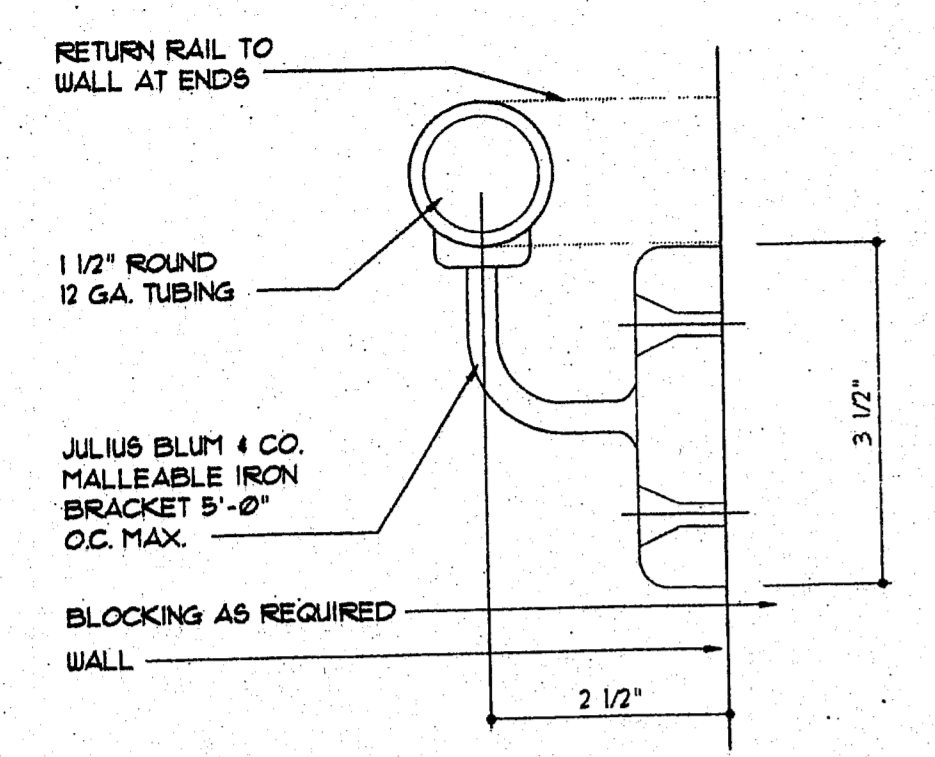
seal:

Sleep Inn
 Jackson, Mississippi

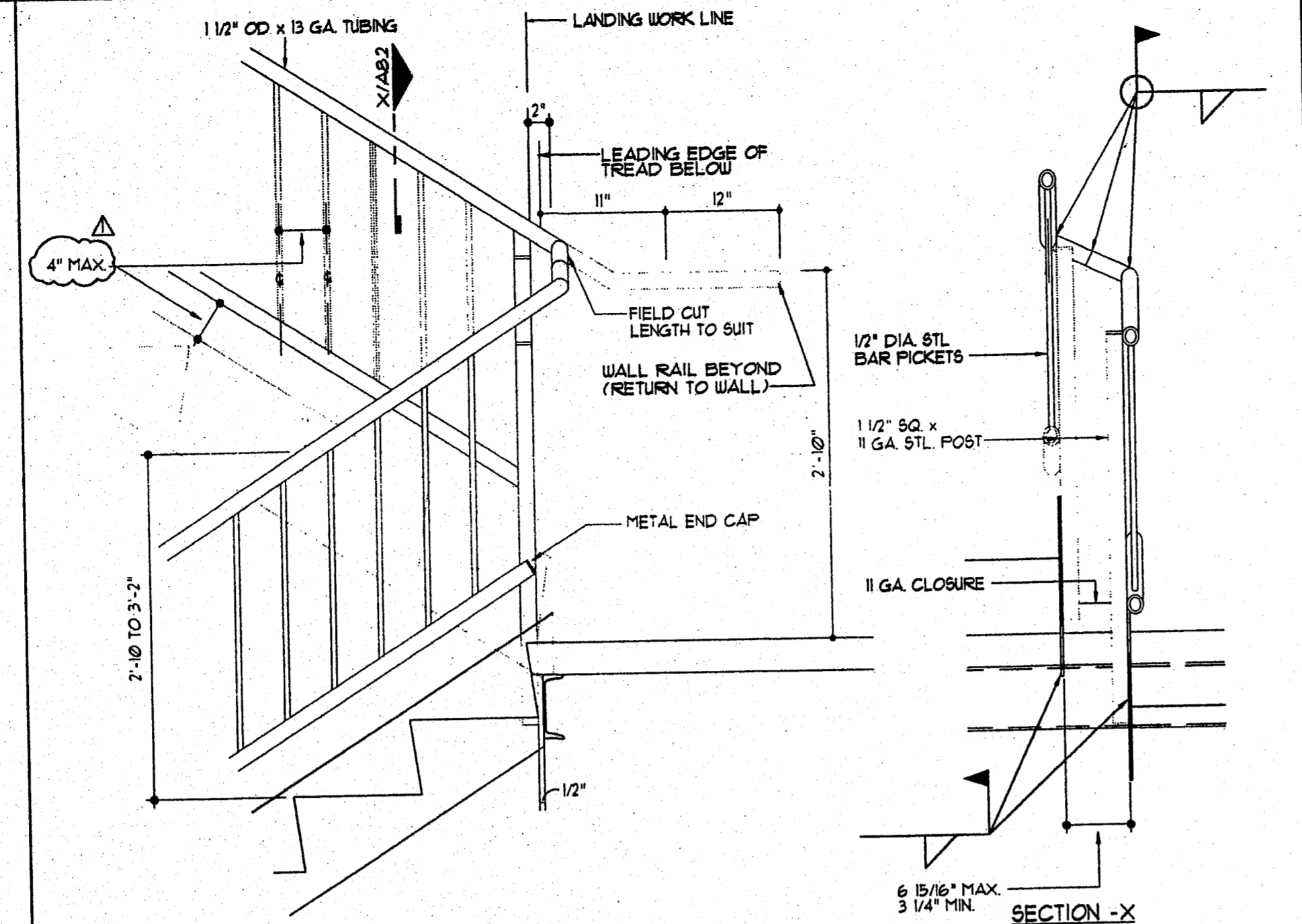
title:
 STAIR AND ELEVATOR DETAILS

date: 10-14-97
 Job: 1697
 File: 1697-A82
 scale: AS NOTED

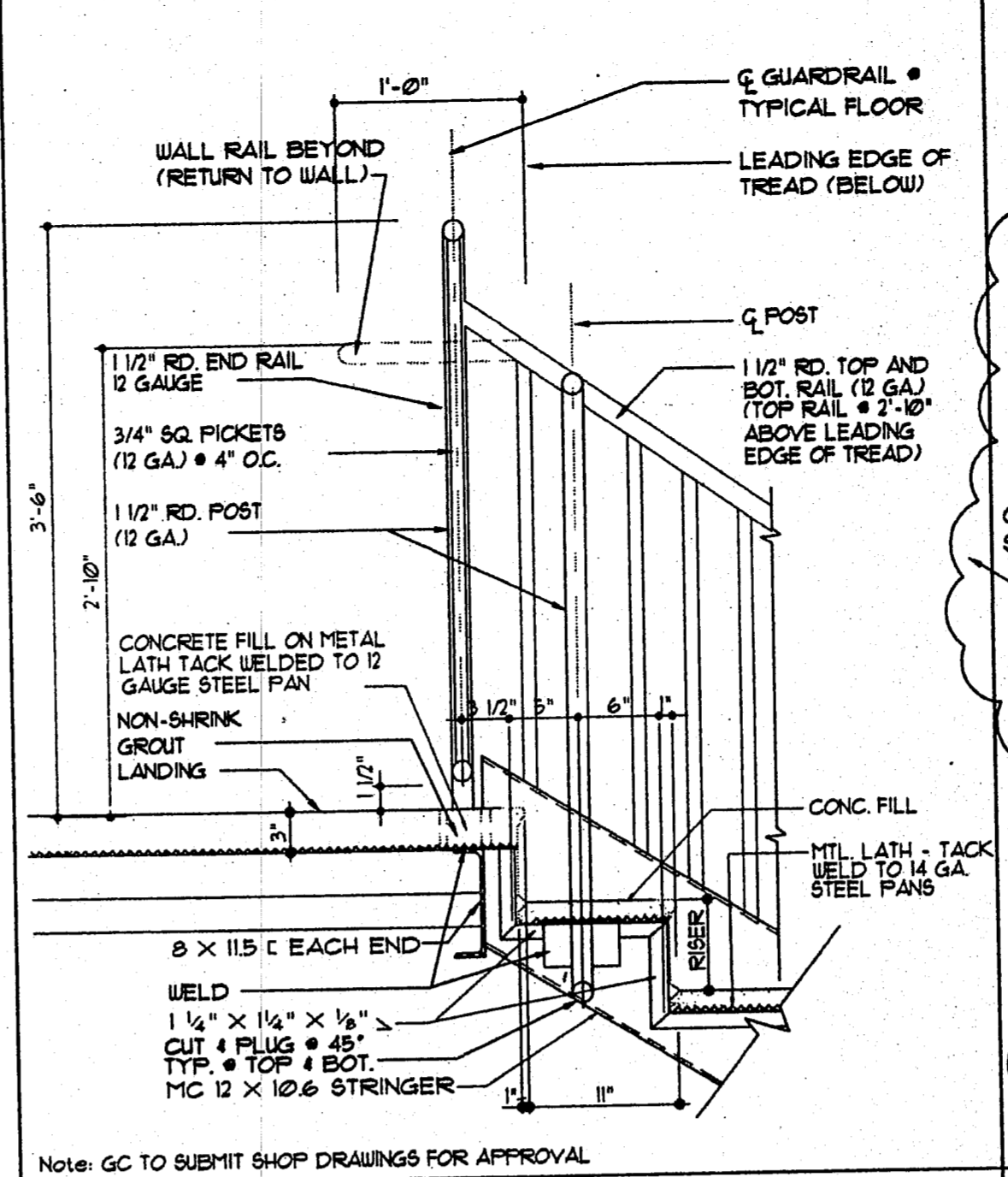
sheet
A8.2
 of 34



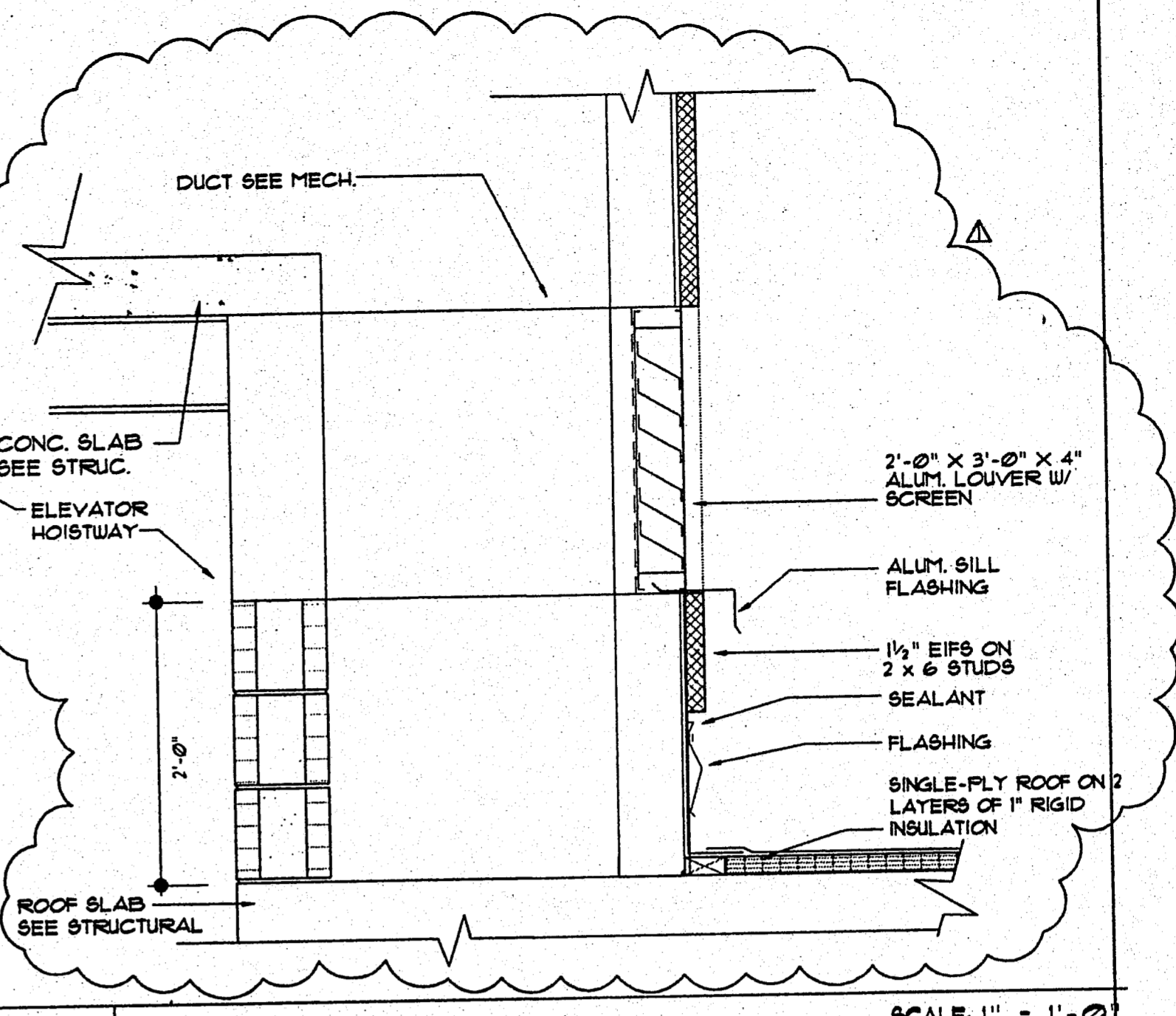
1 Section Detail Handrail Bracket
 SCALE: 1/2" = 1'-0"



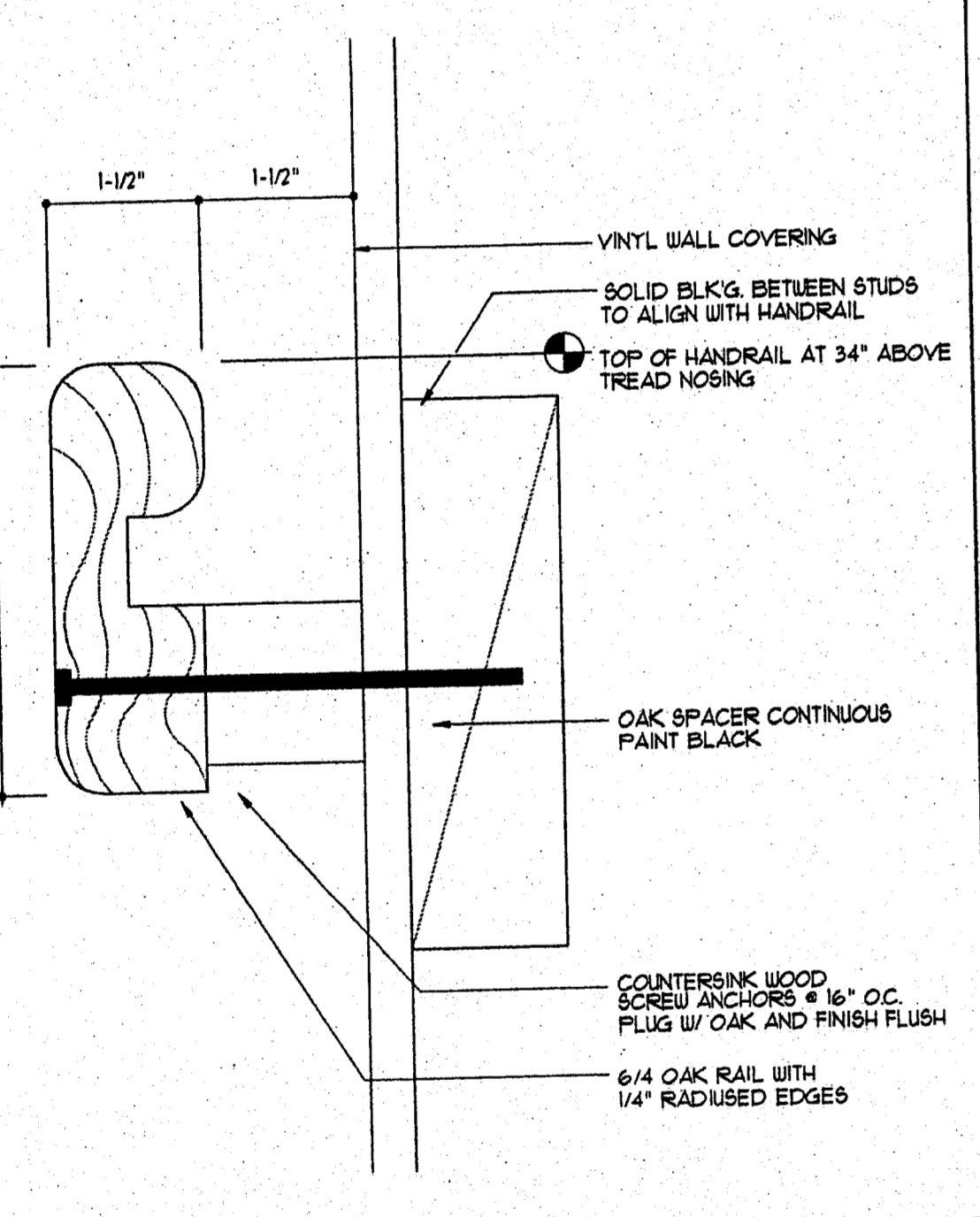
2 Section Detail Stair #1 & #2 @ Landing
 SCALE: 1" = 1'-0"



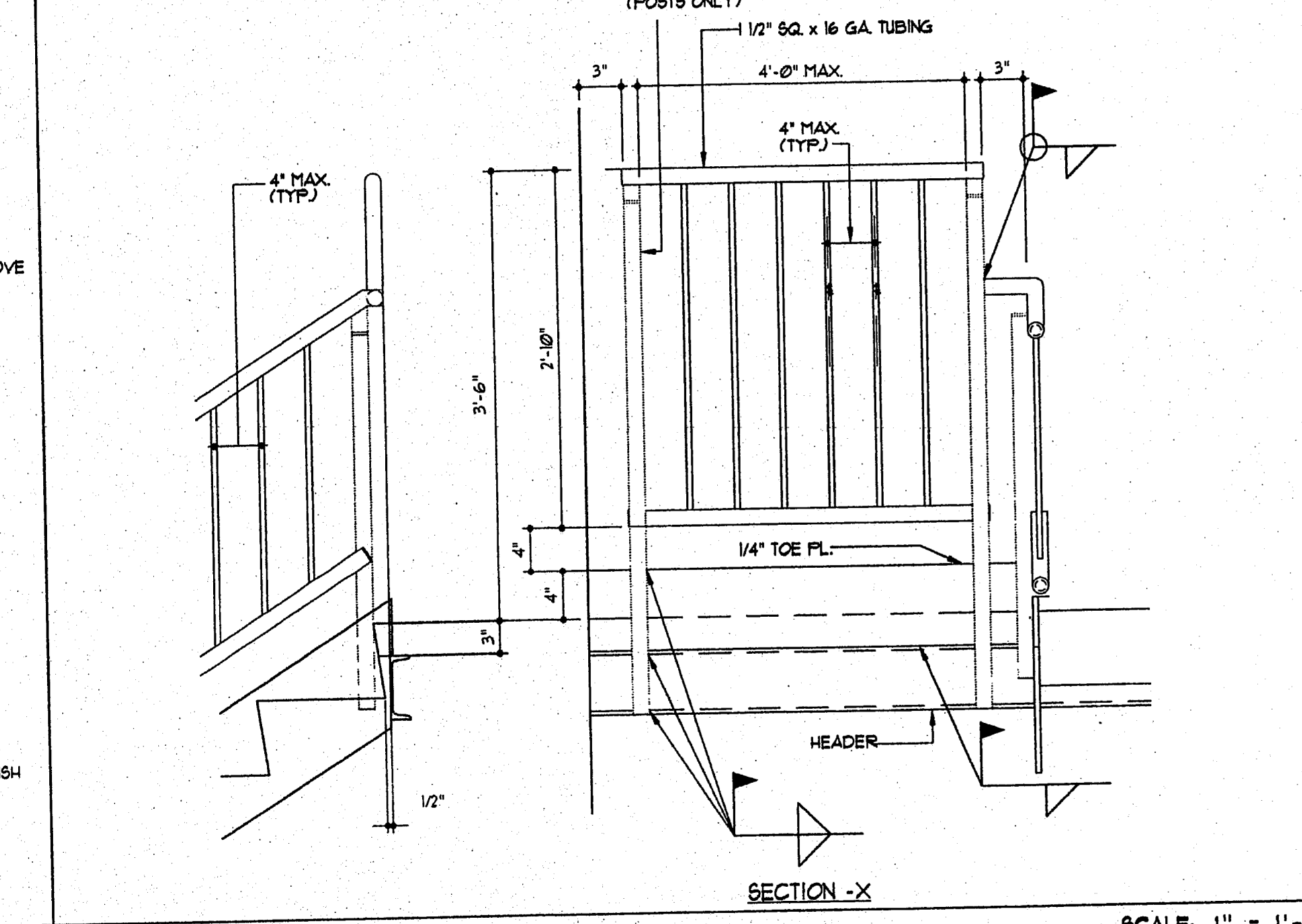
4 Section Detail Stair #1 & #2 @ Floor Level
 SCALE: 1" = 1'-0"



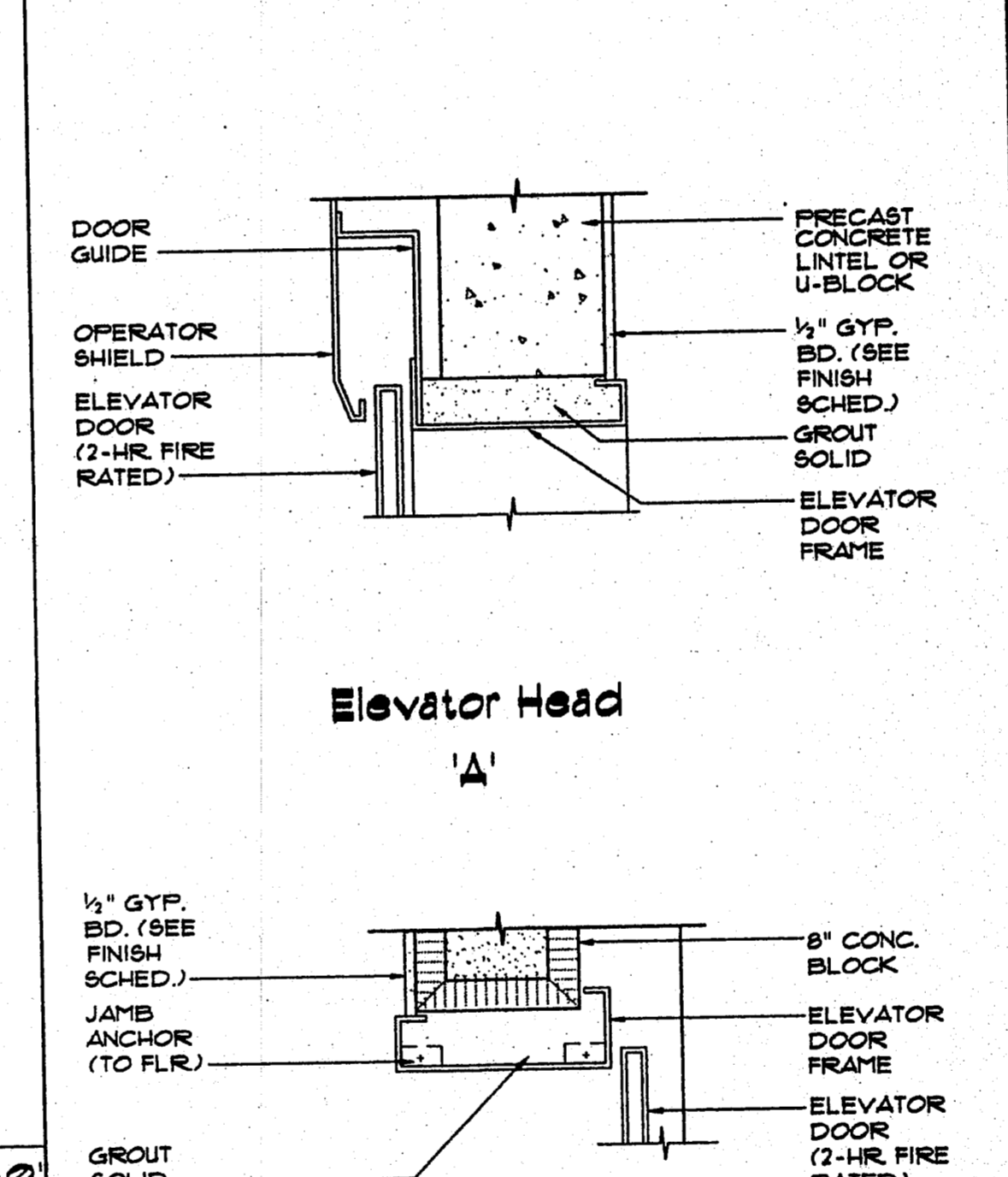
5 Section Detail Elevator Hoistway Louver
 SCALE: 1" = 1'-0"



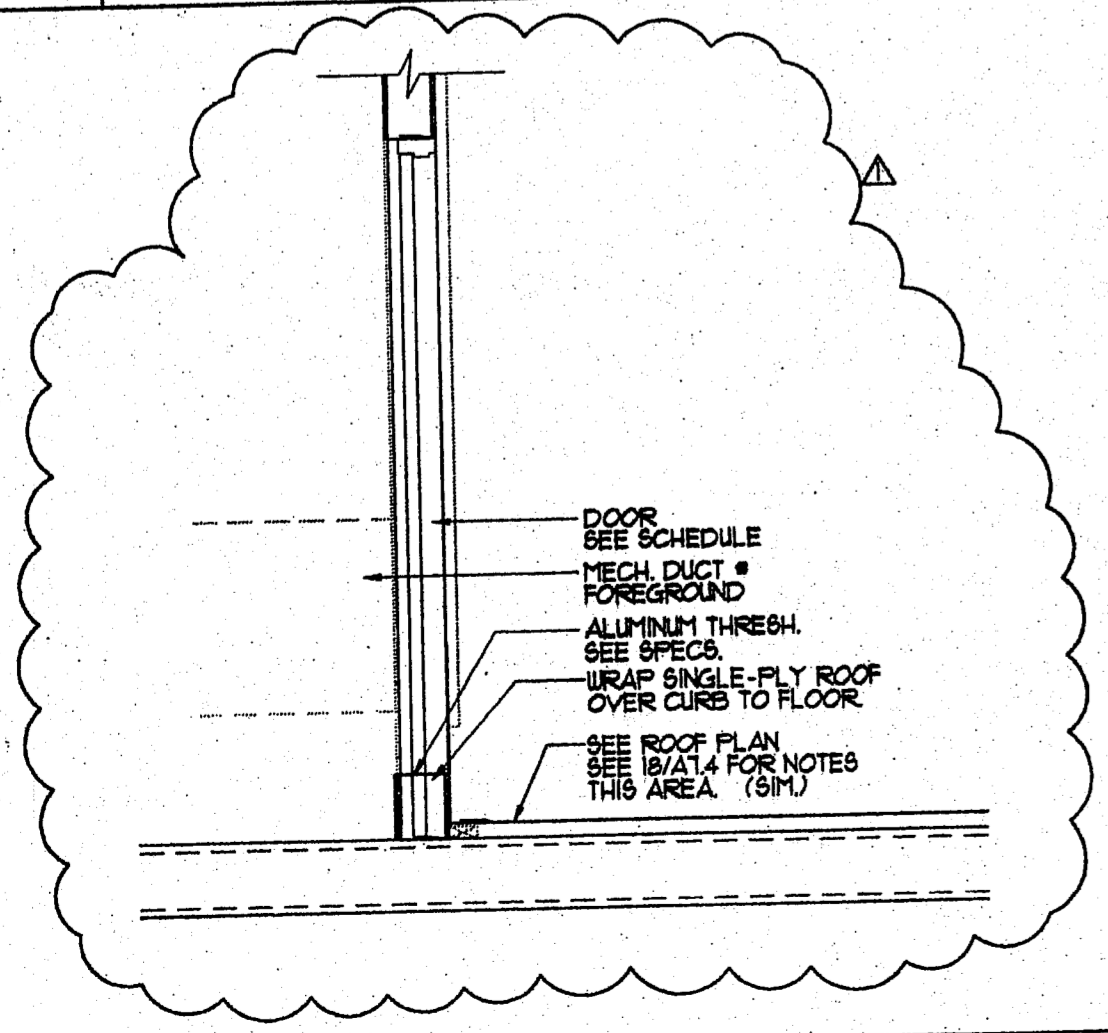
6 Plan Detail Handrail Bracket @ Lobby
 SCALE: 1/2" = 1'-0"



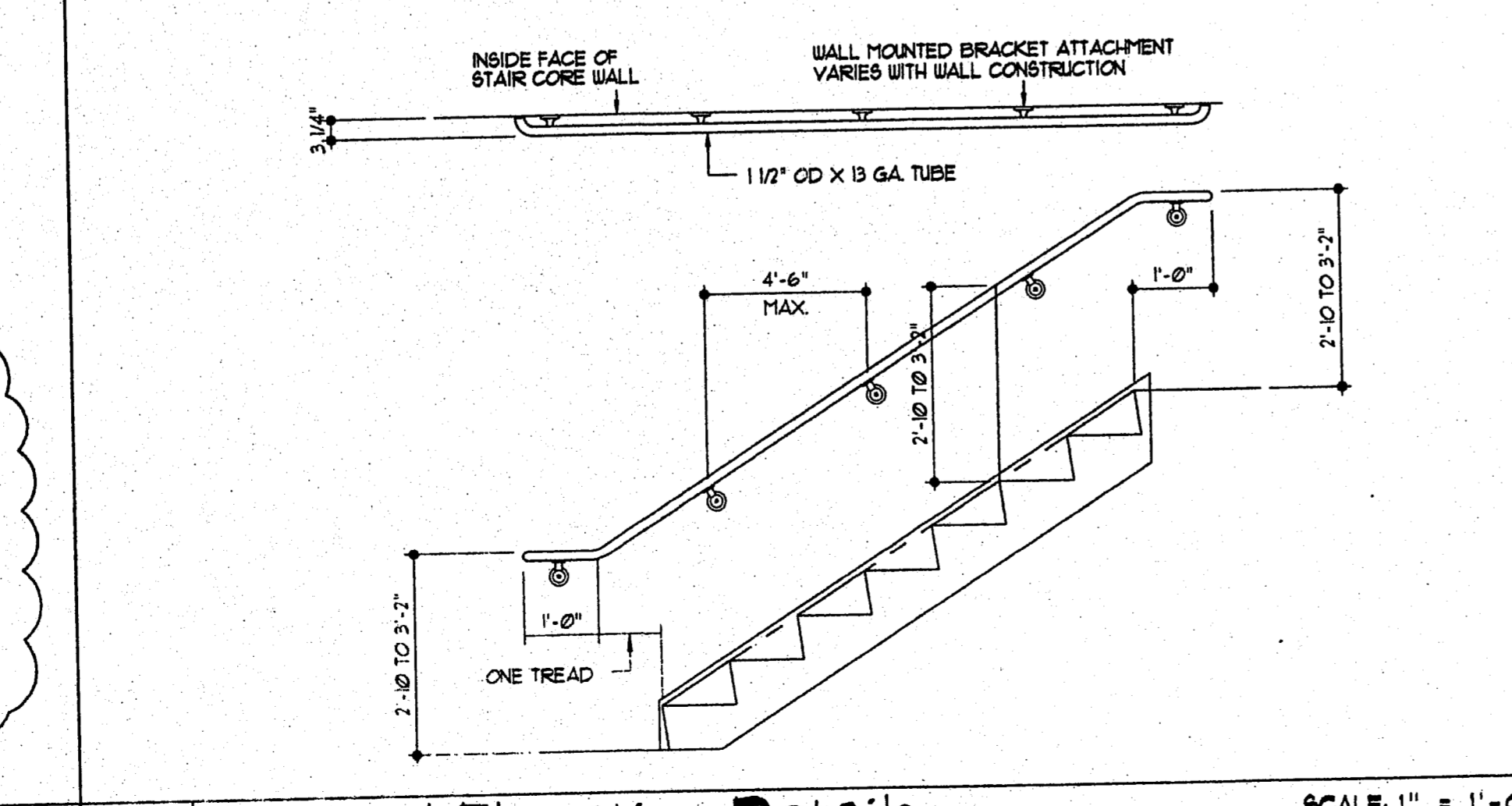
7 Plan Detail Stair #1 and #2 @ Guardrail
 SCALE: 1" = 1'-0"



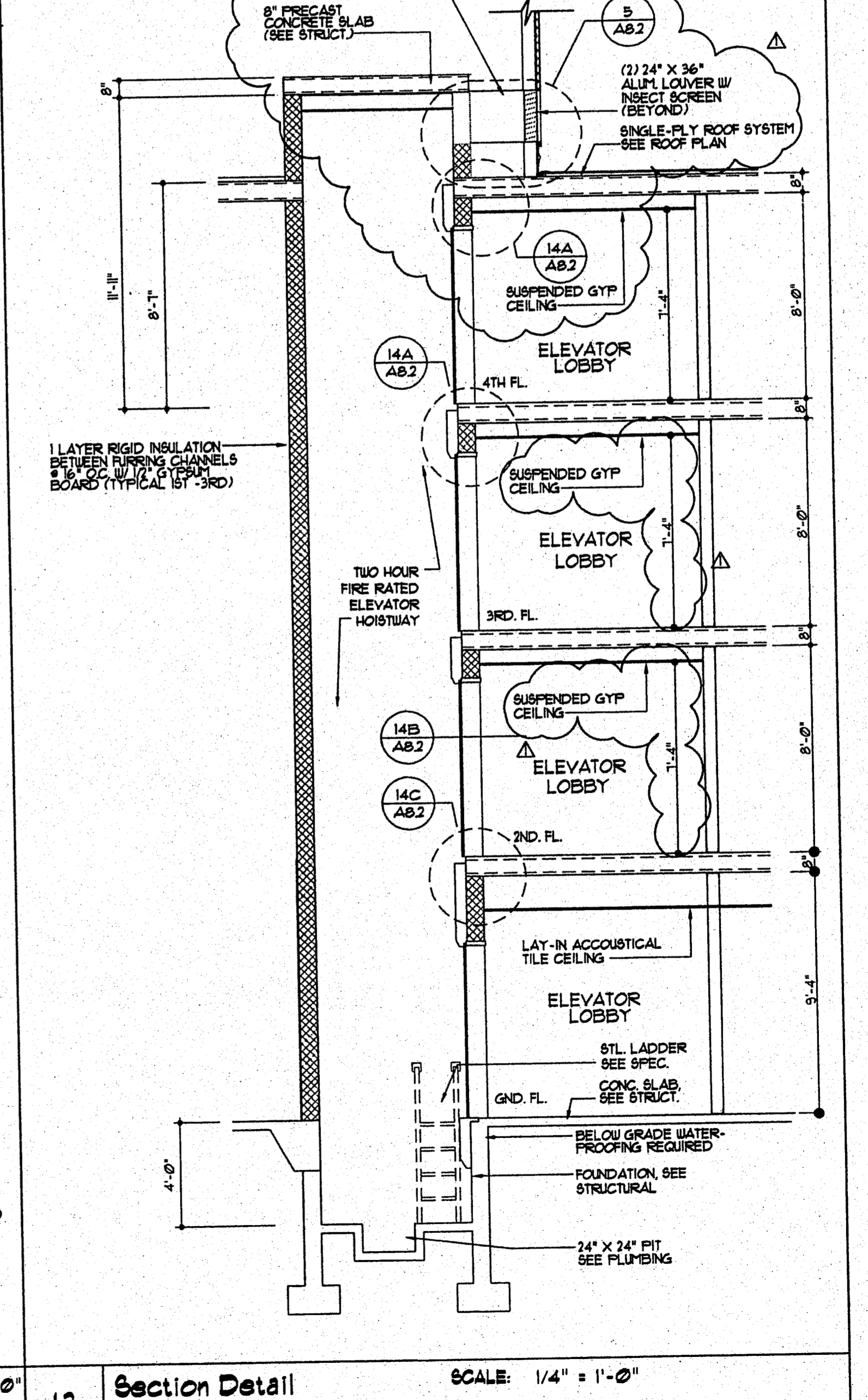
14 Section Detail @ Elevator
 SCALE: 1 1/2" = 1'-0"



11 Section Detail Door To Roof
 SCALE: 1/2" = 1'-0"



12 Plan and Elevation Details Wall Rail
 SCALE: 1" = 1'-0"



13 Section Detail Elevator
 SCALE: 1/4" = 1'-0"