

▲ revisions:

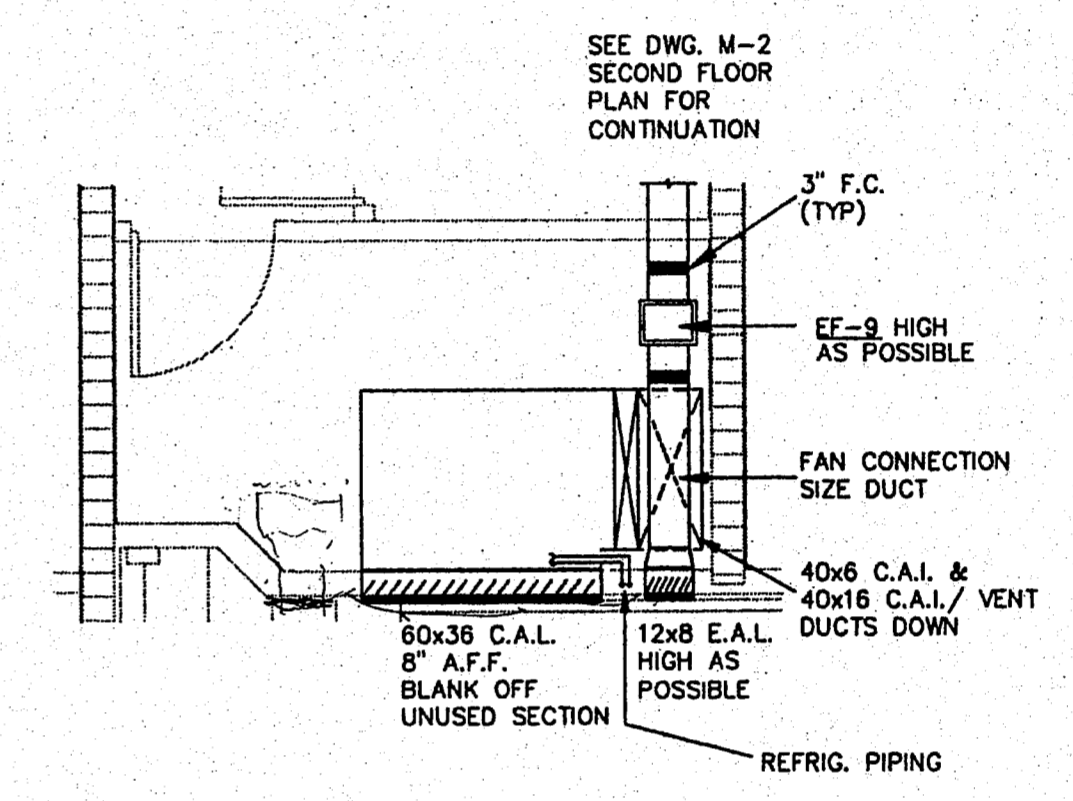
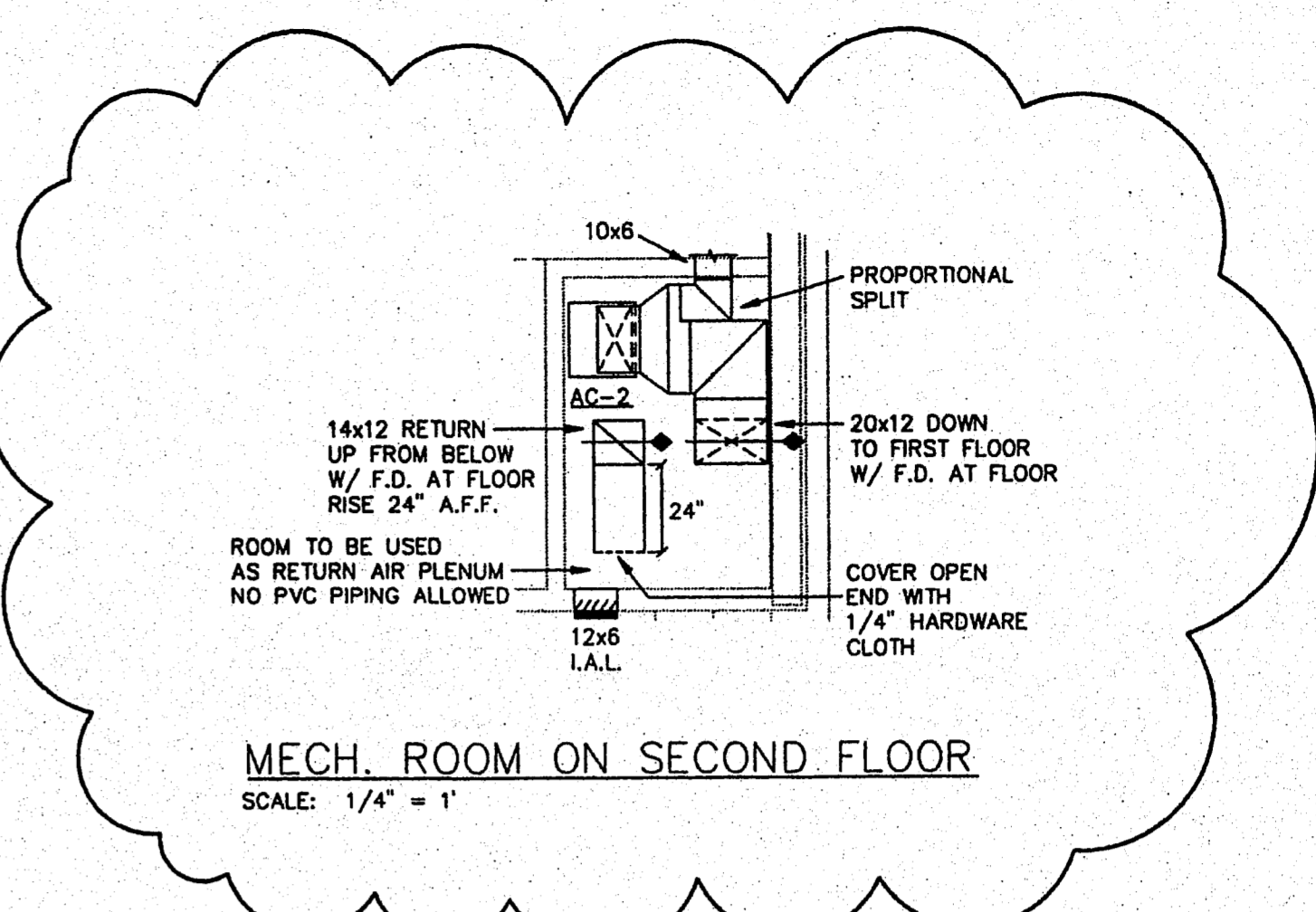
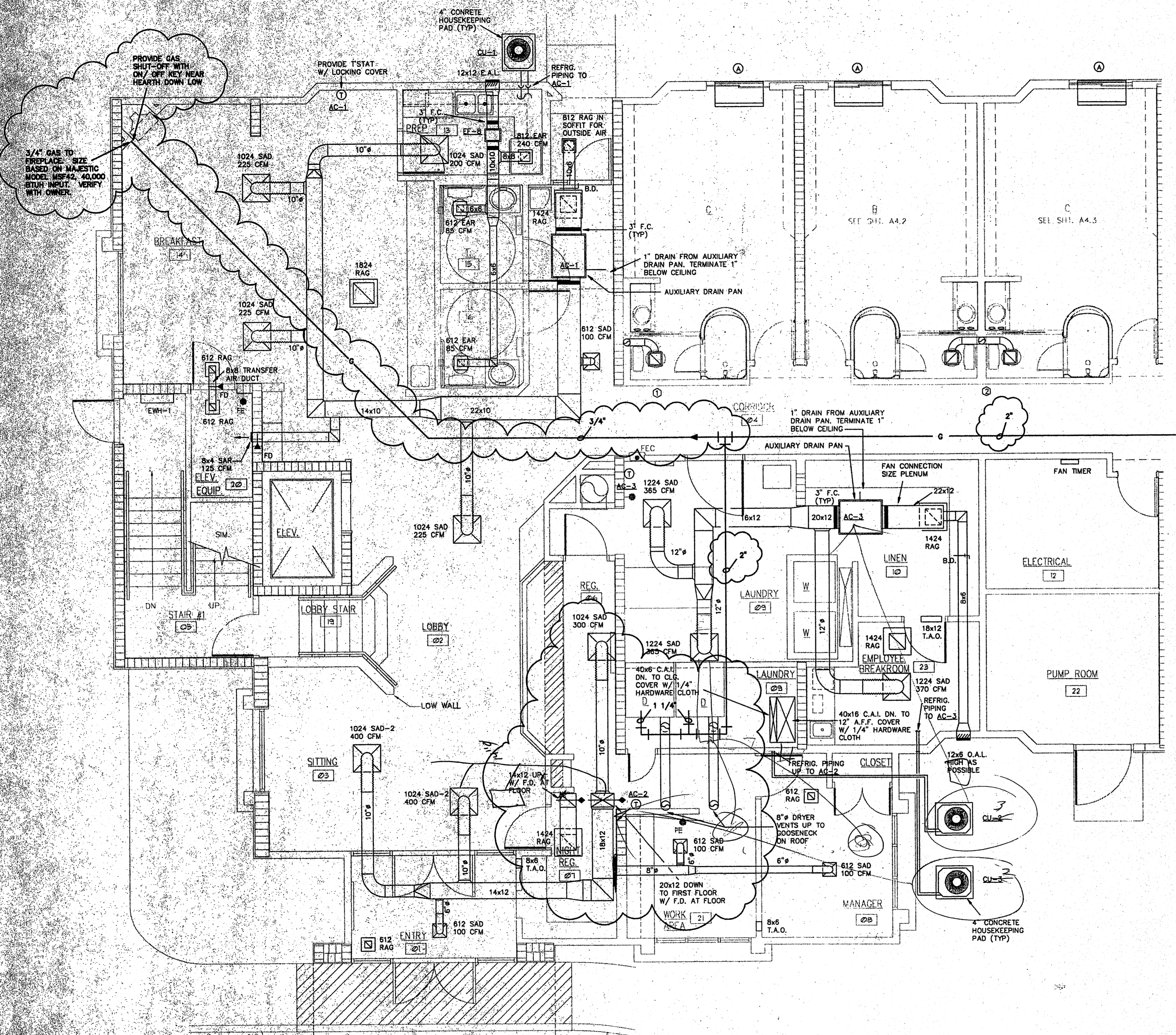
▲ REVIEW	10-14-97

▲ scale:

▲ title:

**LARGE SCALE
 COMMERCIAL
 AREA**

▲ date: 10-14-97
 ▲ job: 1697
 ▲ file: 1697-448
 ▲ scale: 1/8"=1'-0"



COMBUSTION/VENTILATION AIR CALCULATIONS FOR DRYERS

COMBUSTION AIR REQUIREMENTS FOR TWO DRYERS
 (2) DRYERS @ 1,000 CFM EXHAUST EACH
 170,000 BTUH EACH

2 x 170,000 = 340,000 TOTAL BTUH

340,000 ÷ 2000 = 170 SQ. IN. FREE AREA
 170 SQ. IN. ÷ 144 = .18 SQ. FT. FREE AREA

VENTILATION AIR REQUIREMENTS FOR TWO DRYERS
 1.5 SQ. FT. FREE AREA FOR EACH DRYER
 2 x 1.5 = 3.0 SQ. FT. FREE AREA

HIGH COMBUSTION AIR LOUVER = 1.18 SQ. FT.
 REQUIRES - 60x12 COMBUSTION AIR LOUVER

LOW COMBUSTION VENTILATION AIR LOUVER =
 1.18 SQ. FT. + 3 SQ. FT. = 4.18 SQ. FT. FREE AREA
 REQUIRES - 60x24 COMBUSTION/VENTILATION AIR LOUVER
 PROVIDE 60x36 LOUVER FOR 5.36 SQ. FT. FREE AREA

CALCULATION BASED ON DRYER MODEL #J38FD366
 1,000 CFM, 170,000 BTUH EACH. CONTRACTOR TO VERIFY
 EXACT DRYER BEING INSTALLED FROM OWNER AND
 SUBMIT SHOP DRAWING BEFORE INSTALLATION.

LARGE SCALE COMMERCIAL AREA
 SCALE: 1/4" = 1'-0"

CONSULTANT

GE
Gala Engineering Inc.
 7975 STAGE HILLS BLVD.
 SUITE 5
 MEMPHIS, TN. 38133
 TEL. (901) 384-8400
 FAX (901) 373-2255