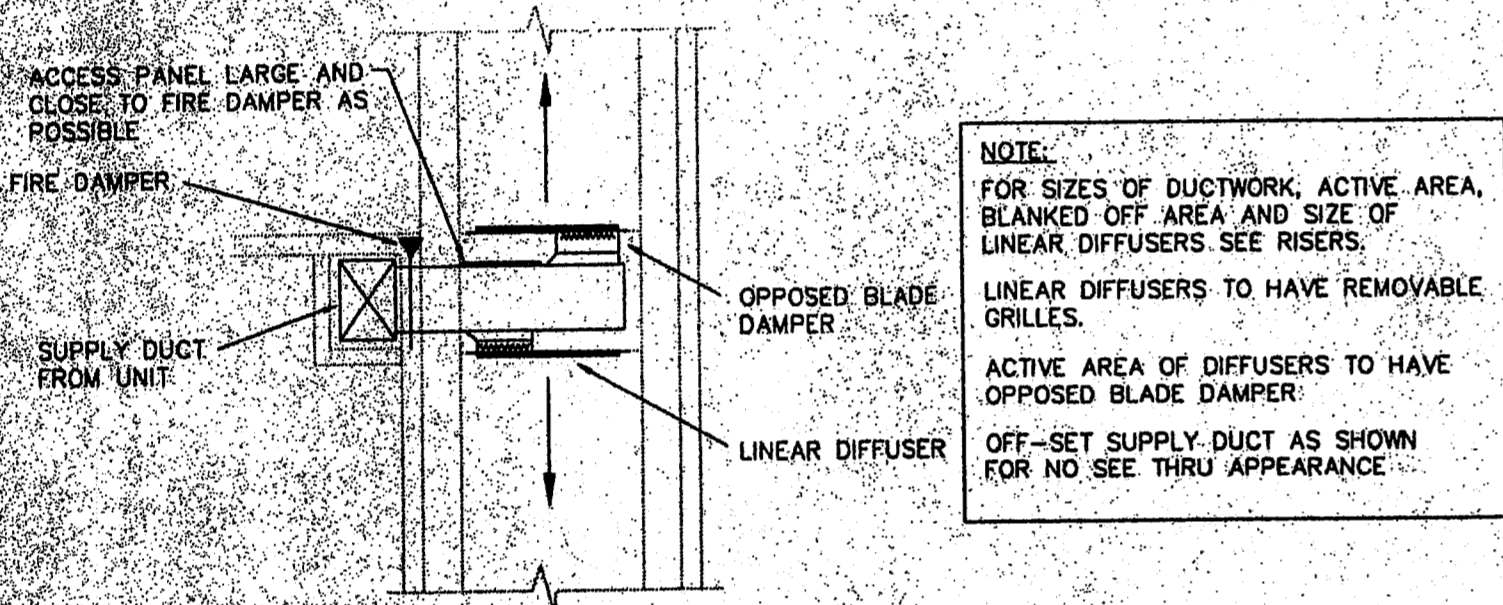
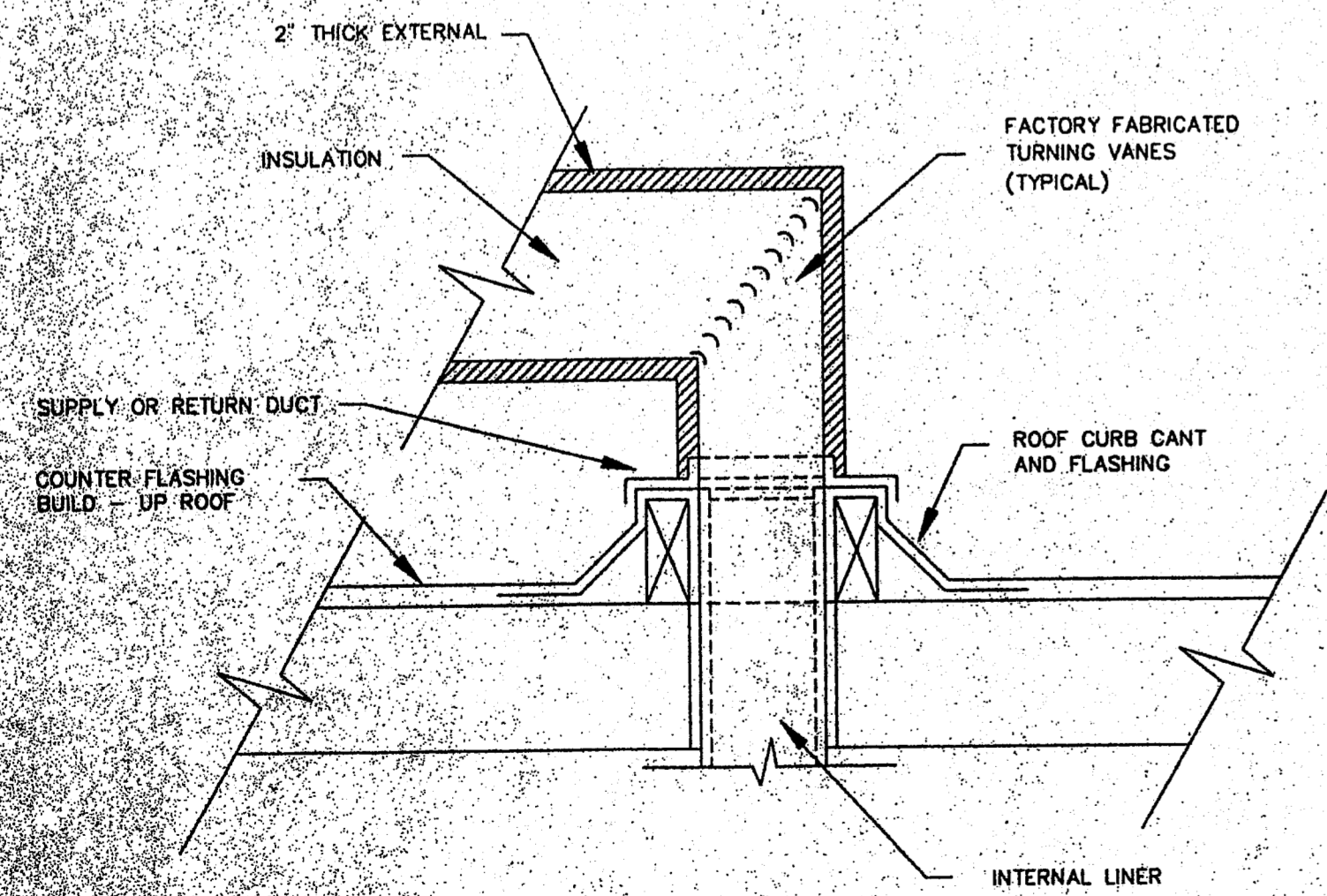


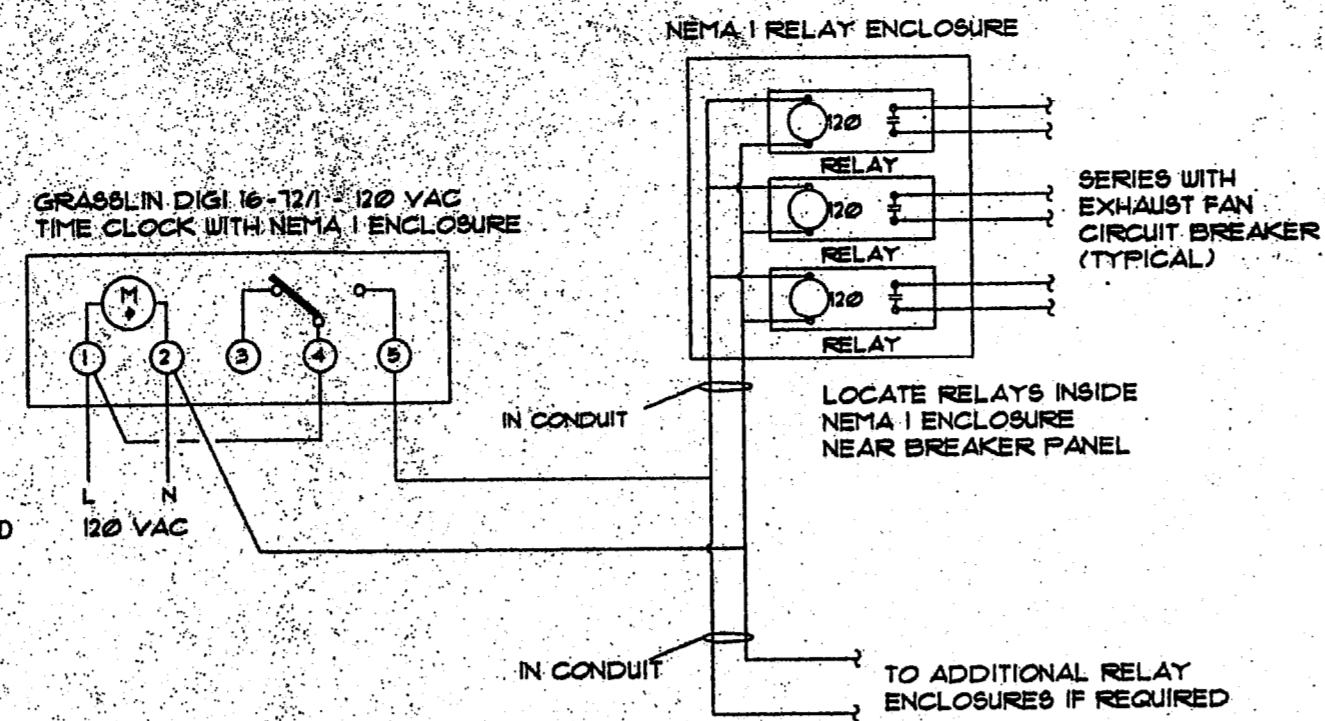
DIFFUSER CONNECTION DETAIL
NOT TO SCALE



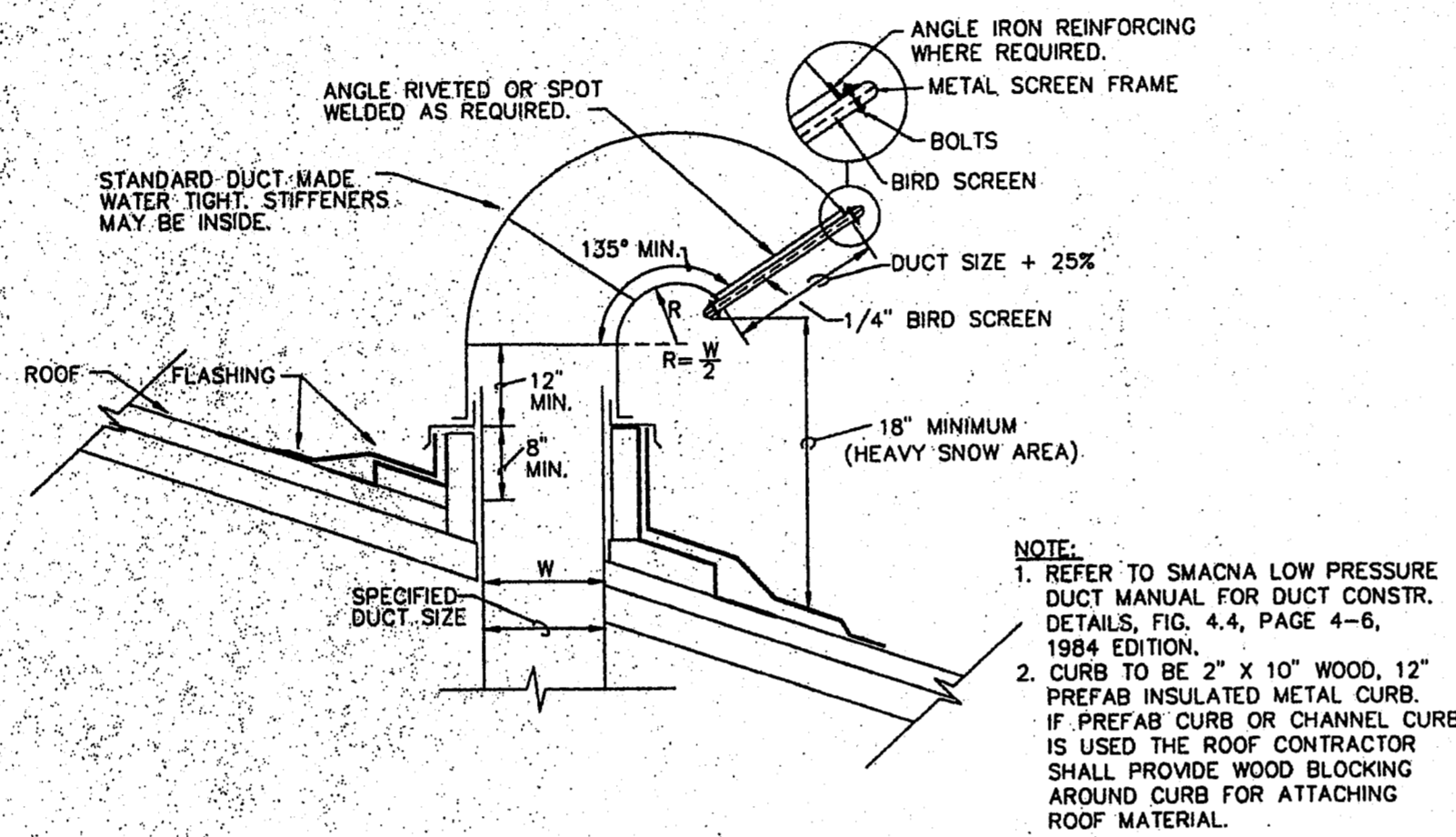
TYPICAL CORRIDOR SUPPLY DETAIL
NOT TO SCALE



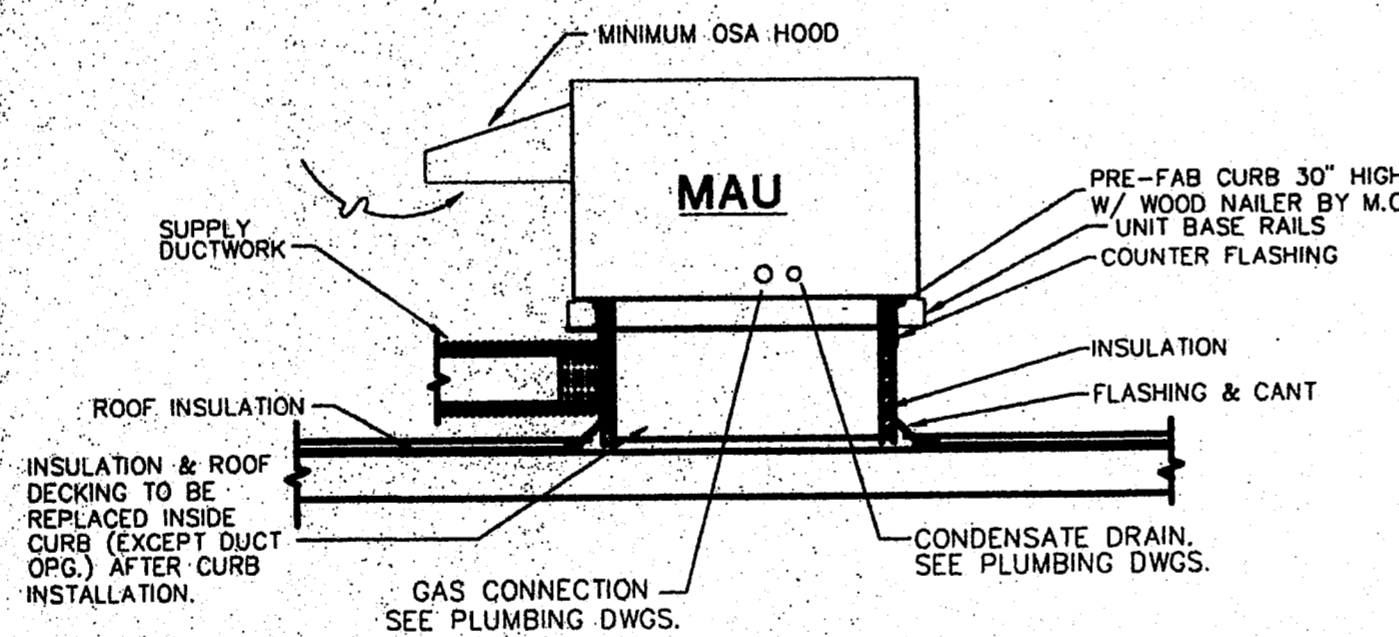
DUCT PENETRATION DETAIL AT ROOF
NOT TO SCALE



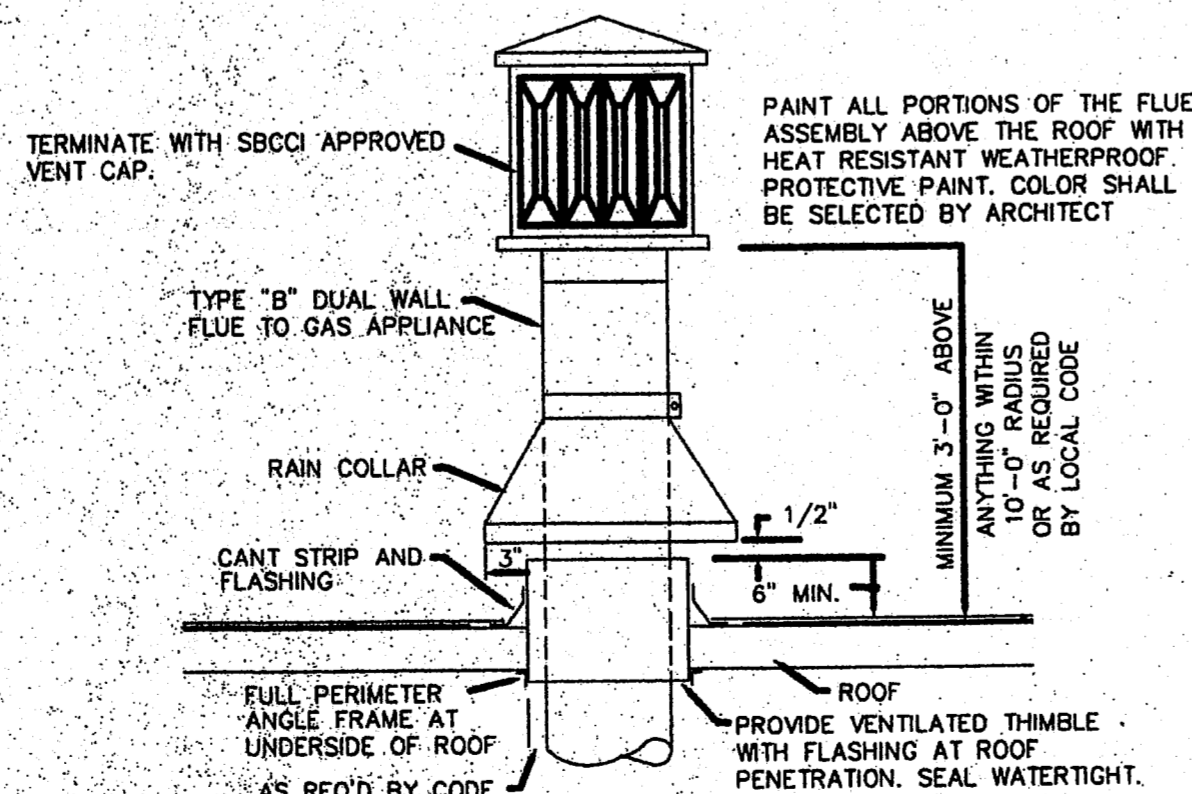
EXHAUST FAN TIMER WIRING DETAIL
NOT TO SCALE



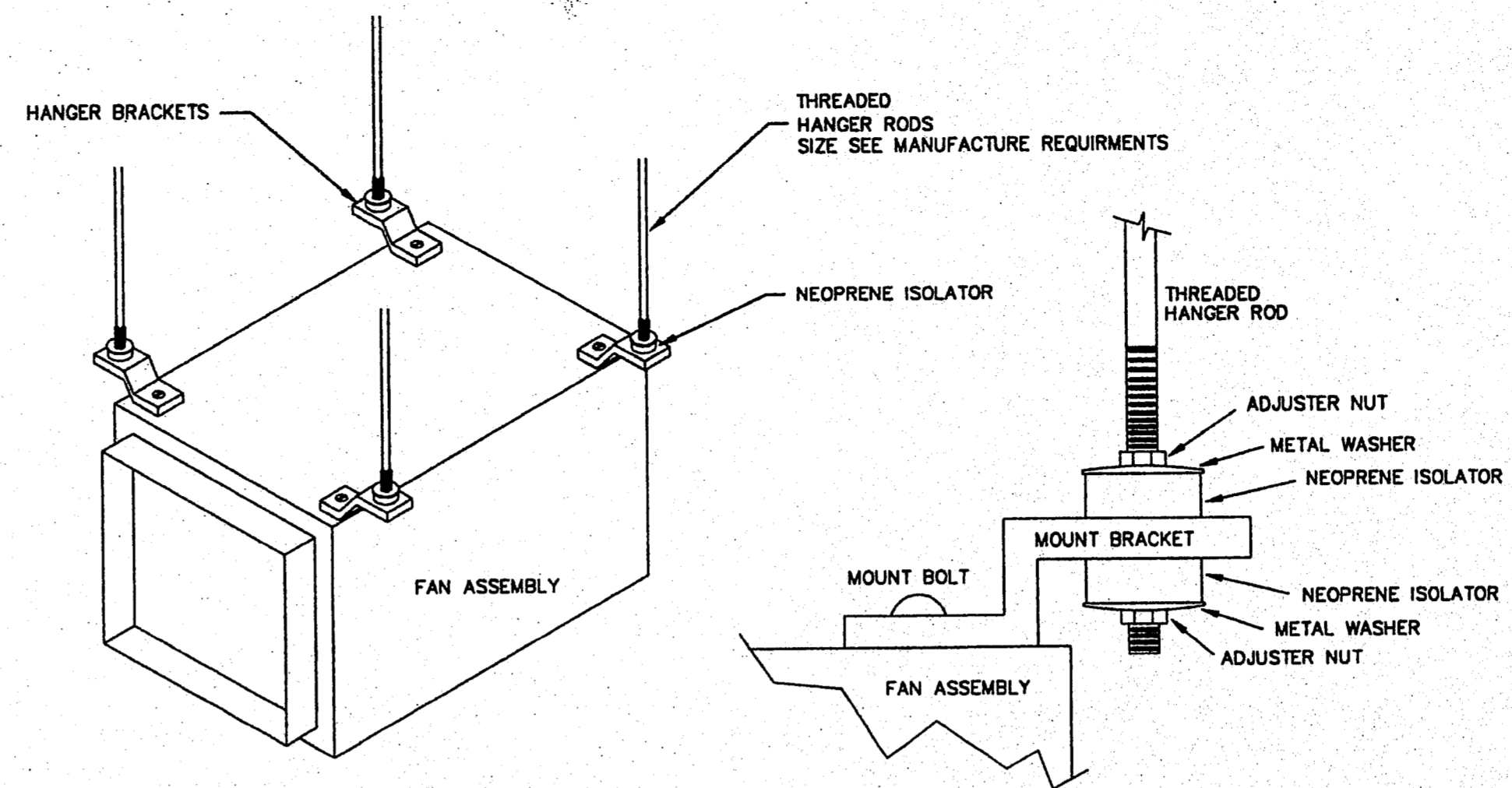
GOOSENECK DETAIL
NOT TO SCALE



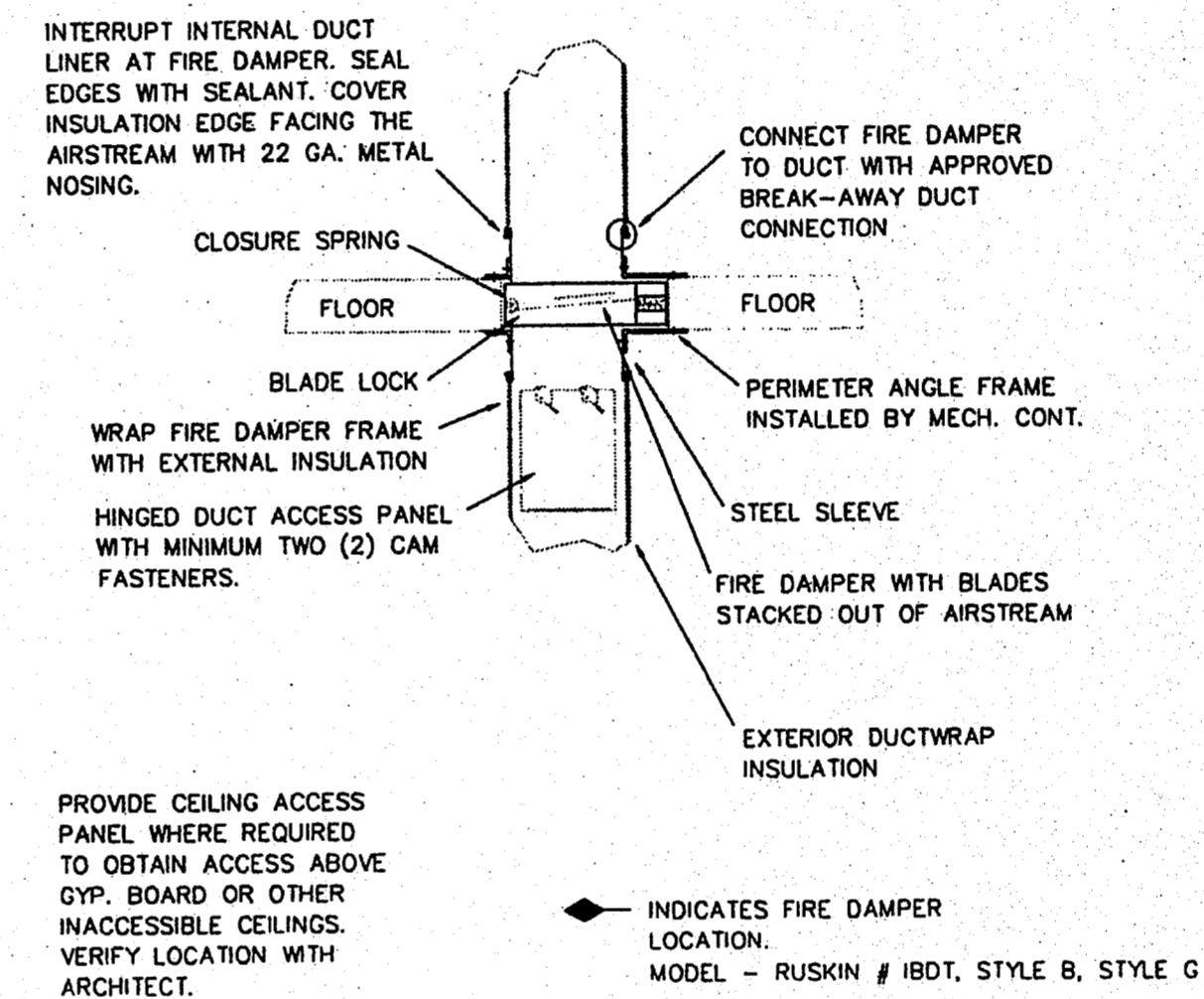
MAU MOUNTING DETAIL (TYP.)
NOT TO SCALE



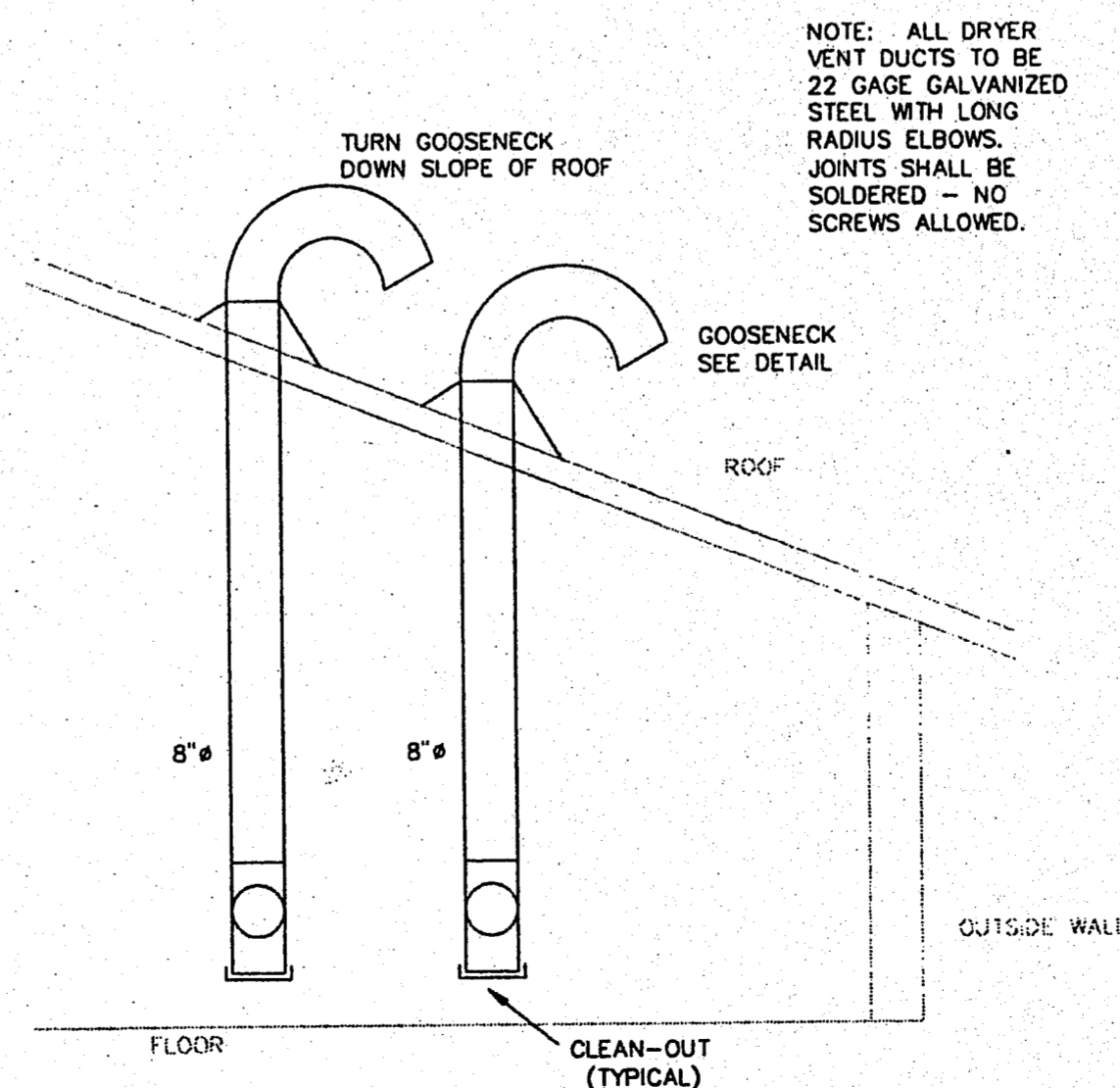
FLUE DETAIL
NOT TO SCALE



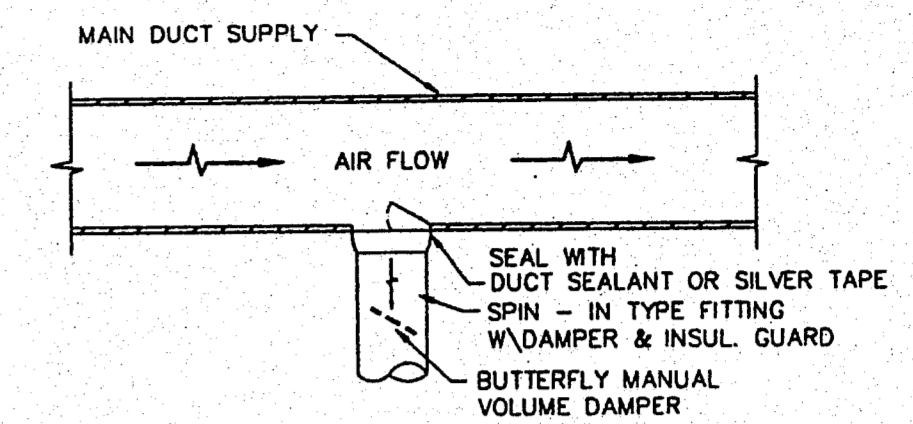
NEOPRENE HANGING ISOLATOR
NOT TO SCALE



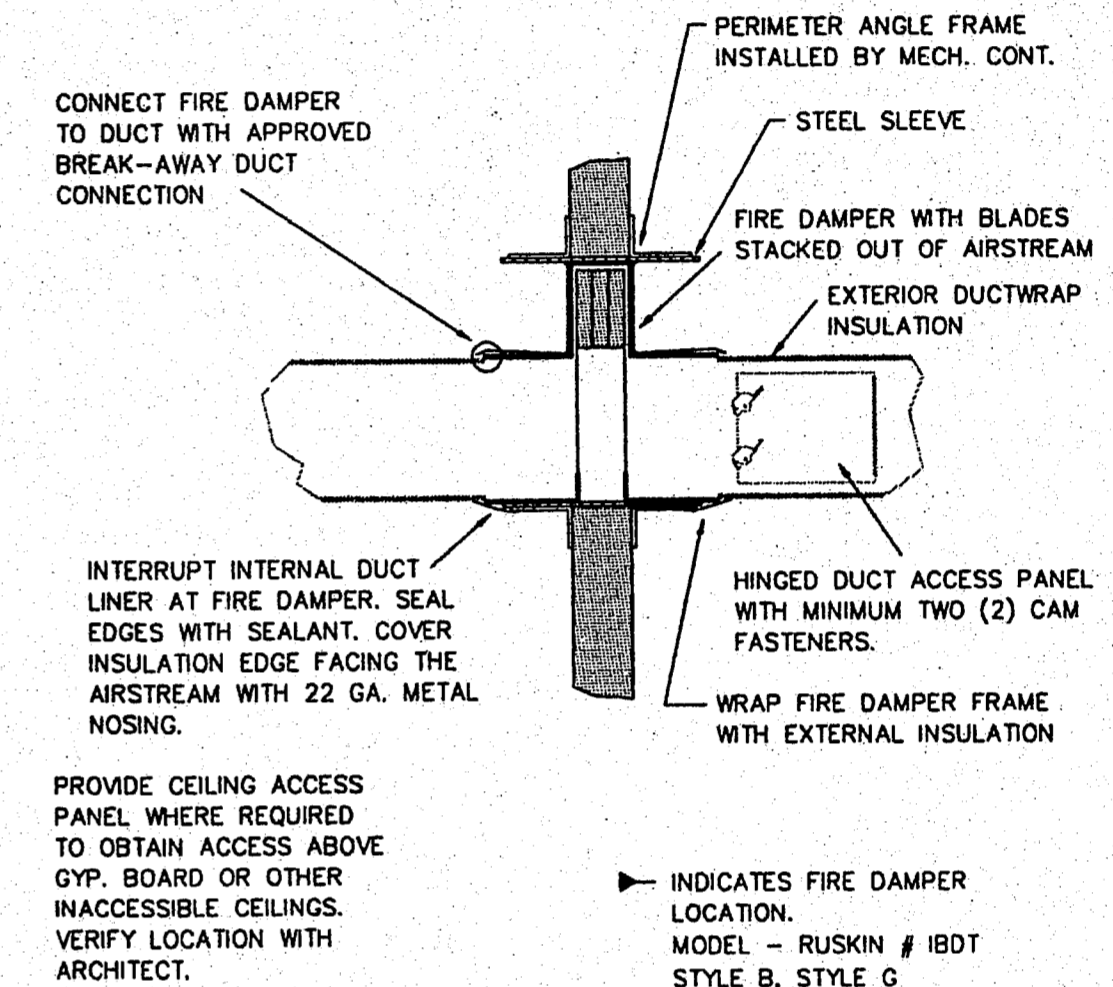
FLOOR MOUNTED FIRE DAMPER DETAIL
NOT TO SCALE



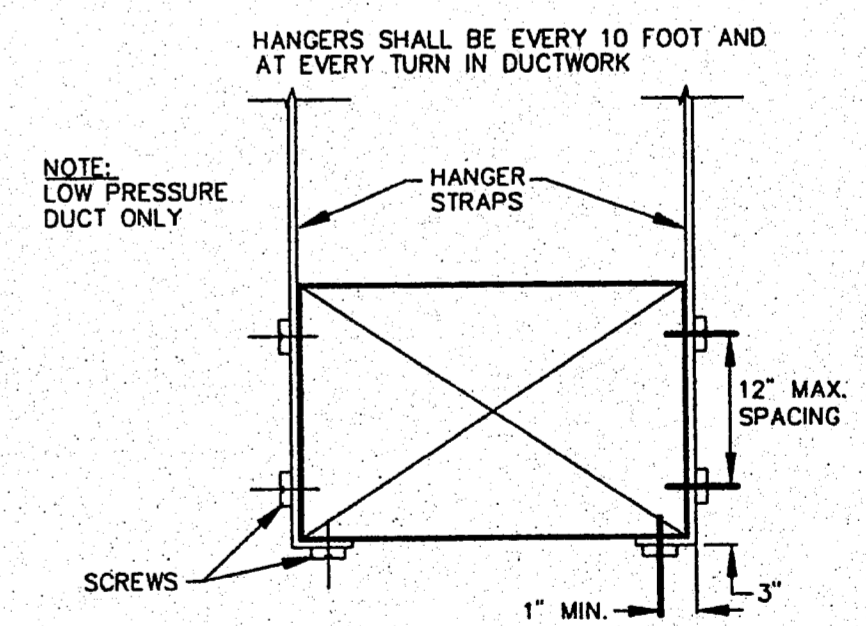
DRYER VENT DETAIL
NOT TO SCALE



RECTANGULAR TO ROUND DUCT TAKE-OFF DETAIL (TYP.)
NOT TO SCALE



FIRE DAMPER DETAIL
NOT TO SCALE



(TYPICAL) DUCT HANGER STRAP DETAIL
NOT TO SCALE

LLW, Inc.
803 SOUTH MT. MORIAH, STE. 100B
MEMPHIS, TENNESSEE 38117-5343
901-683-7755/FAX 901-683-2385
LEONARD MESSINA, ARCHITECT

revisions:
OWNER REVIEW 5-21-97
CHG TO PRECAST 8-8-97

seal:

Sleep Inn
Jackson, Mississippi

title:
DETAILS

date: 10-14-97
job: 1697
file: 1697-A23
scale: 1/8" = 1'-0"

sheet
M-5

CONSULTANT
GE
Gala Engineering Inc.
7975 STAGE HILLS BLVD.
SUITE 5
MEMPHIS, TN. 38133
TEL (901) 384-8400
FAX (901) 373-2255