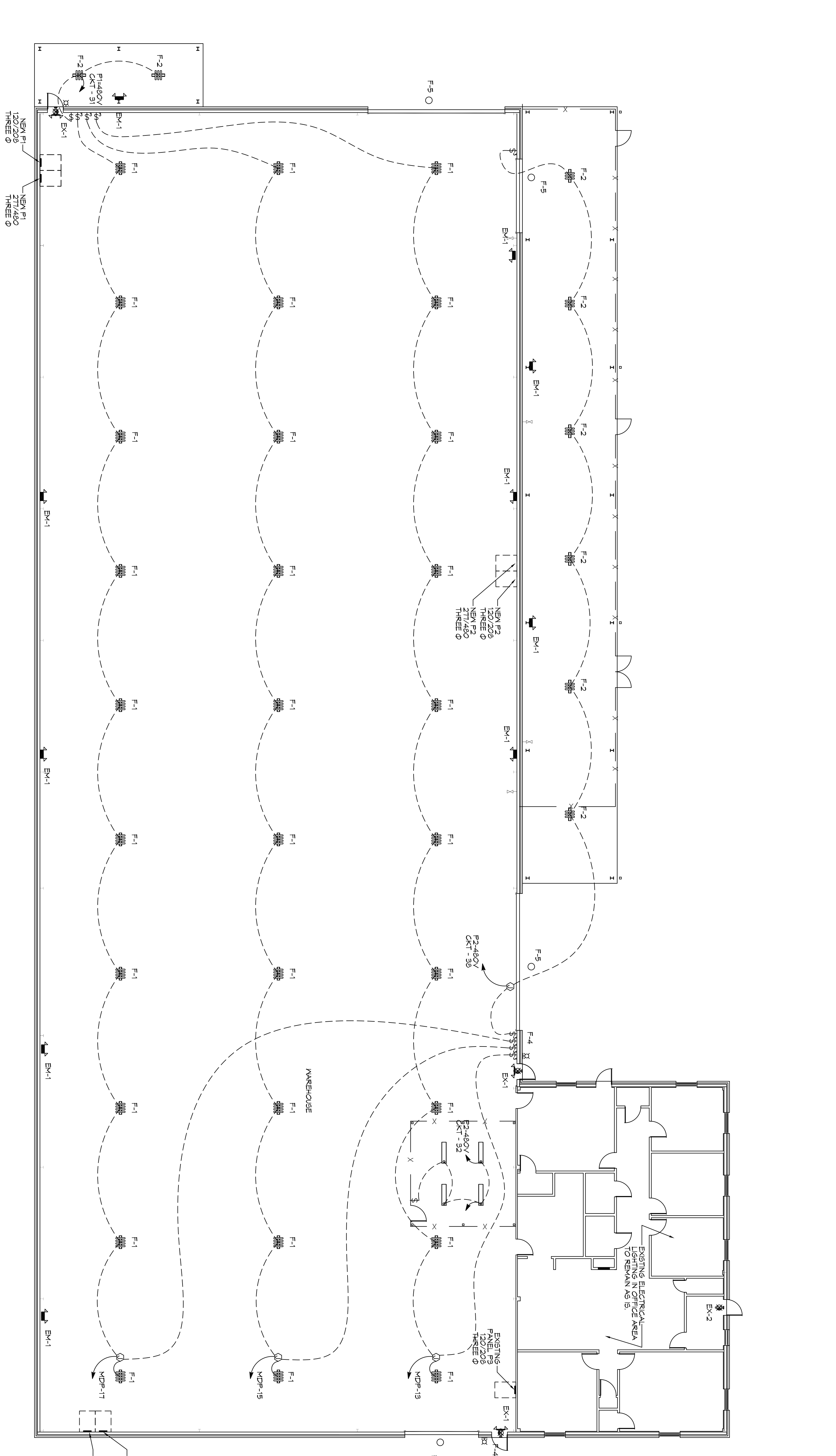


LIGHTING FIXTURE SCHEDULE					
EXAMPLE	LABEL	DESCRIPTION	MANUFACTURER PRODUCT #	QTY	REMARKS
	F-1	HIGH BAY LED FIXTURE	ALBEO LED LUMINAIRE ABH2-0-4-V-57-1-N-23-K-N-M	30	REPLACE EXISTING FIXTURE. RE-WIRE TO MDP.
	F-2	HIGH BAY LED FIXTURE	ALBEO LED LUMINAIRE ABH2-0-3-V-57-1-N-23-K-N-M	30	
	F-3	LED 1x4 FIXTURE	LITHONIA LED L P840	2	
	F-4	EXISTING EXTERIOR LIGHT FIXTURE W/ PHOTO CELL		3	INSPECT/TEST REPAIR/REPLACE AS NECESSARY. RE-WIRE TO CLOSEST 120V PANEL.
	F-5	EXISTING EXTERIOR LIGHT FIXTURE W/ PHOTO CELL		4	INSPECT/TEST REPAIR/REPLACE AS NECESSARY. RE-WIRE TO CLOSEST 120V PANEL. WIRE TO CLOSEST 480V PANEL.
	EM-1	EMERGENCY LIGHT FIXTURE	LITHONIA LIGHTING ELM2 LED	10	
	EM-1	EMERGENCY LIGHT FIXTURE WITH EMERGENCY LIGHTS		3	INSPECT/TEST REPAIR/REPLACE AS NECESSARY. RE-WIRE TO CLOSEST 120V PANEL.
	EX-2	EXISTING EXIT LIGHT FIXTURE		1	INSPECT/TEST REPAIR/REPLACE AS NECESSARY.



**LIGHTING NOTES**

1. ALL WORK SHALL COMPLY WITH APPLICABLE NATIONAL, STATE AND LOCAL CODES, RULES, REGULATIONS, AND REQUIREMENTS OF THE SERVICE UTILITY COMPANY.
2. GENERAL CONTRACTOR SHALL NOTIFY THE ENGINEER IMMEDIATELY IF ANY CONFLICTS OCCUR BETWEEN LIGHTING AND ANY OTHER TRADE. DO NOT PROCEED WITH INSTALLATION IN THAT AREA UNTIL CONFLICT HAS BEEN RESOLVED TO THE SATISFACTION OF THE ENGINEER.
3. WHEN SPECIFIC LIGHT FIXTURE HAS BEEN SPECIFIED IN THE FUTURE SCHEDULE, ELECTRICAL SHALL PROVIDE COMPLETE MANUFACTURER'S INCLUSIVE ALL PARTS AND INSTRUCTIONS TO INSURE PROPER INSTALLATION AND OPERATION.
4. ALL CONDUCTORS SHALL BE 1/2" MINIMUM RIGID ALUMINUM CONDUIT UNLESS NOTED OTHERWISE.
5. ALL CONDUCTORS SHALL BE COPPER.
6. WHERE CONDUCTOR SIZES ARE NOTED ON DRAWINGS, THAT WIRE SIZE SHALL BE THROUGH THE ENTIRE RUN UNLESS OTHERWISE NOTED.
7. MOUNTED LIGHT SWITCHES 48" AFF UNLESS NOTED OTHERWISE ON ARCHITECTURAL DRAWINGS.
8. WHERE MORE THAN ONE SWITCH OCCURS IN THE SAME LOCATION, THEY SHALL BE INSTALLED IN A GANG TYPE BOX UNDER ONE COVER PLATE. ALL GANGED SWITCHES SHALL HAVE A COMMON SEAMLESS FACEPLATE. EACH MULTI-GANGED BOX SHALL BE NO MORE THAN SIX (6) SWITCHES WIDE. WHERE MORE THAN SIX (6) SWITCHES ARE SHOWN AT ONE (1) LOCATION, ADDITIONAL MULTI-GANGED BOXES SHALL BE STACKED PERMITTED AND THE WIDTH OF THE MULTI-GANGEDS SHALL BE AS EVEN AS POSSIBLE.
9. EACH DIMMER SWITCH SHALL HAVE A WATTAGE RATING 25% HIGHER THAN THE TOTAL WATTAGE OF ALL LIGHTS TO BE CONTROLLED BY THE DIMMER. DIMMER SIZES 600, 1000, 1500, AND 2000 WATTS. LITRON NOVA T-STAR, WHERE SWITCHES ARE GANGED WITH DIMMERS, THE SWITCHES SHALL ALSO BE LITRON NOVA T-STAR. FLUORESCENT AND LOW VOLTAGE DIMMERS SHALL BE LITRON NOVA T-STAR.
10. WHERE LED FIXTURES/LAMPS ARE SHOWN TO BE DIMMED, THE DIMMER SHALL BE COMPATIBLE WITH THE FIXTURE/LAMP SPECIFIED OR PROVIDED.
11. ALL EMERGENCY LIGHT FIXTURES SHALL HAVE 90 MINUTE BATTERY BACKUP WITH INTERNAL TEST BUTTON AND SHALL BE CONTINUOUSLY ON.
12. ALL FLUORESCENT FIXTURES THAT UTILIZE DOUBLE-EVAPORATED LAMPS AND CONTAIN BALLASTS SHALL BE PROVIDED WITH A DISCONNECTING MEANS IN ACCORDANCE WITH NEC 410.196.
13. MINIMUM SIZE CONDUIT SHALL BE 3/4" ELECTRICAL METALLIC TUBING (EMT) FOR INTERIOR USE, 1/2" RIGID ALUMINUM FOR EXTERIOR USE ABOVE GRADE. MINIMUM OF 18" FOR NON-VOL-SPRINKLER TRAVEL AREAS. EMT SHALL BE USED WITH METAL STUD CONSTRUCTION. INTERIOR FITTINGS SHALL BE CAST WARE EXPOSED ON WALLS AND EXTERIOR FITTINGS SHALL BE CAST BOXES WITH NEMA 3R COVER(S).

1ELECTRICAL LIGHTING PLAN  
SCALE 3/32" = 1'-0"

SHEET NO. 4 OF 10

**E102**

DRAWING NUMBER:

RENOVATIONS AND ADDITIONS FOR  
**ALLIANCE LASER**

60207 CAMP VILLERE ROAD  
SLIDELL, LA 70460

JOB No: 2248 DATE: 01-17-17

DRAWN BY: JTL/DD CHECKED BY: CKD

REVISIONS		
#	DESCRIPTION	DATE

**DAMMON ENGINEERING, INC.**  
LOUISIANA & MISSISSIPPI

Chief Engineer: Brian Mistich, PE  
554 Old Spanish Trail  
Slidell, LA 70458

www.dammonengineering.com  
info@dammonengineering.com  
PH: 985.649.5832