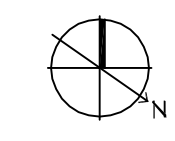
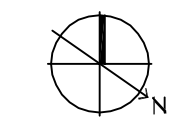
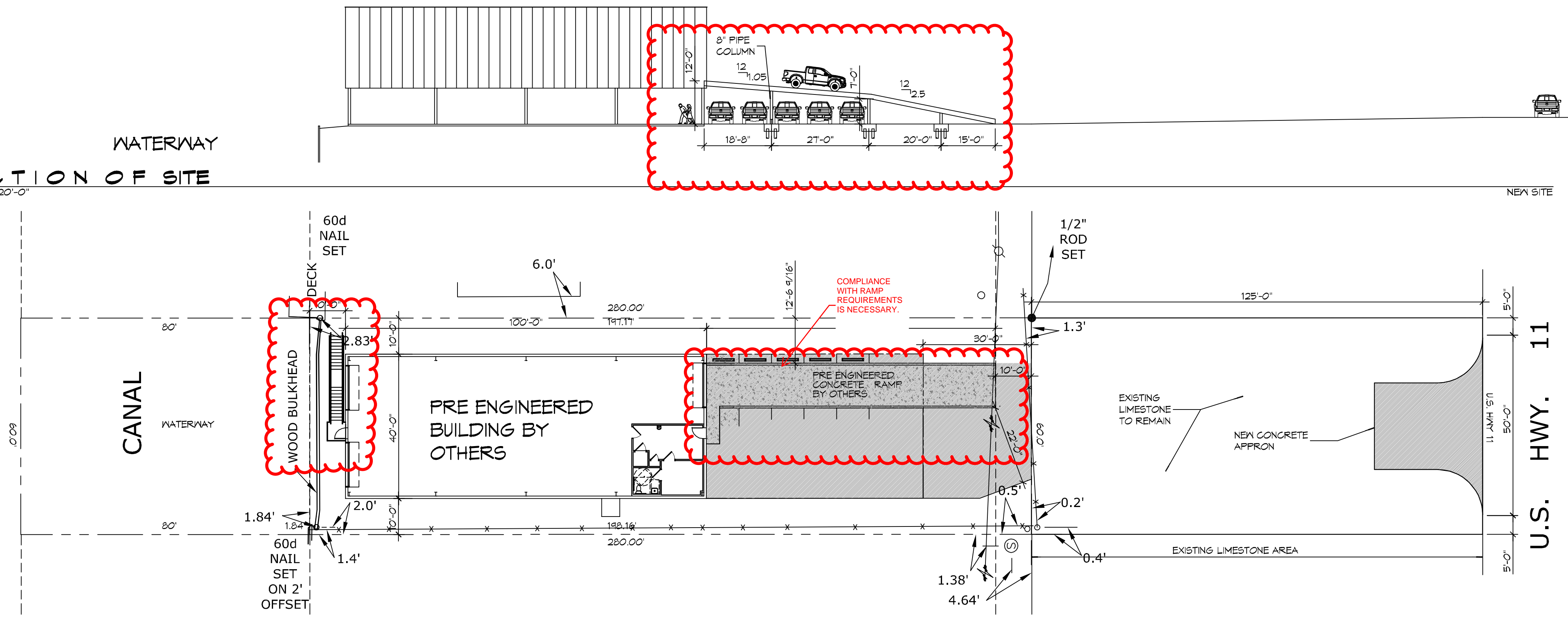


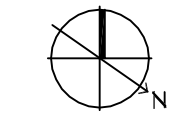
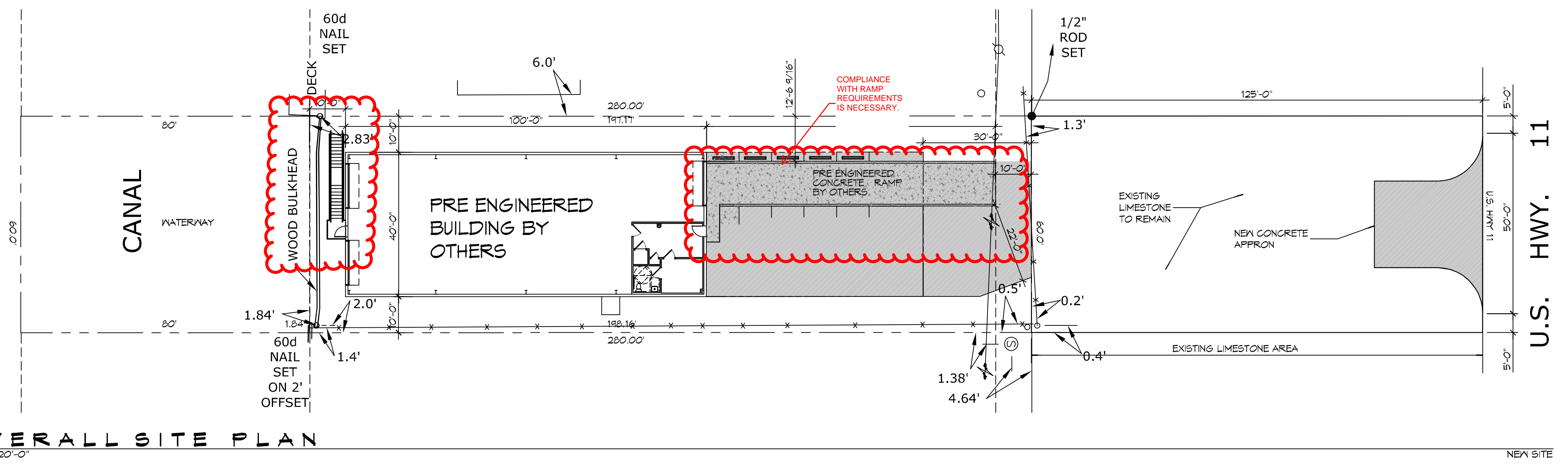
D.E. DAMMON, A.S. Office: Metairie, Louisiana 70002 - John: 504.885.0000 - Fax: 504.885.0001 - Email: jdammon@dammonengineering.com
 1554 Old Spanish Trail, Suite 101, Metairie, LA 70002
 www.dammonengineering.com
 info@dammonengineering.com
 PH: 985.641.5832 F: 985.641.5950



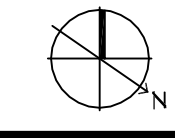
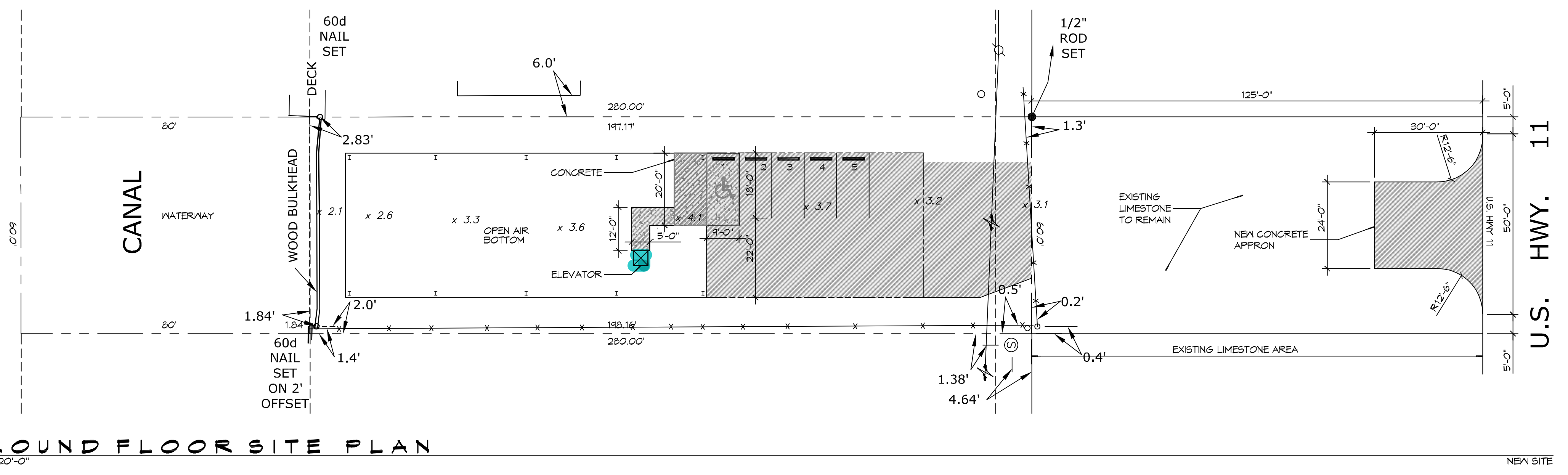
4 SECTION OF SITE
SCALE: 1"=20'-0"



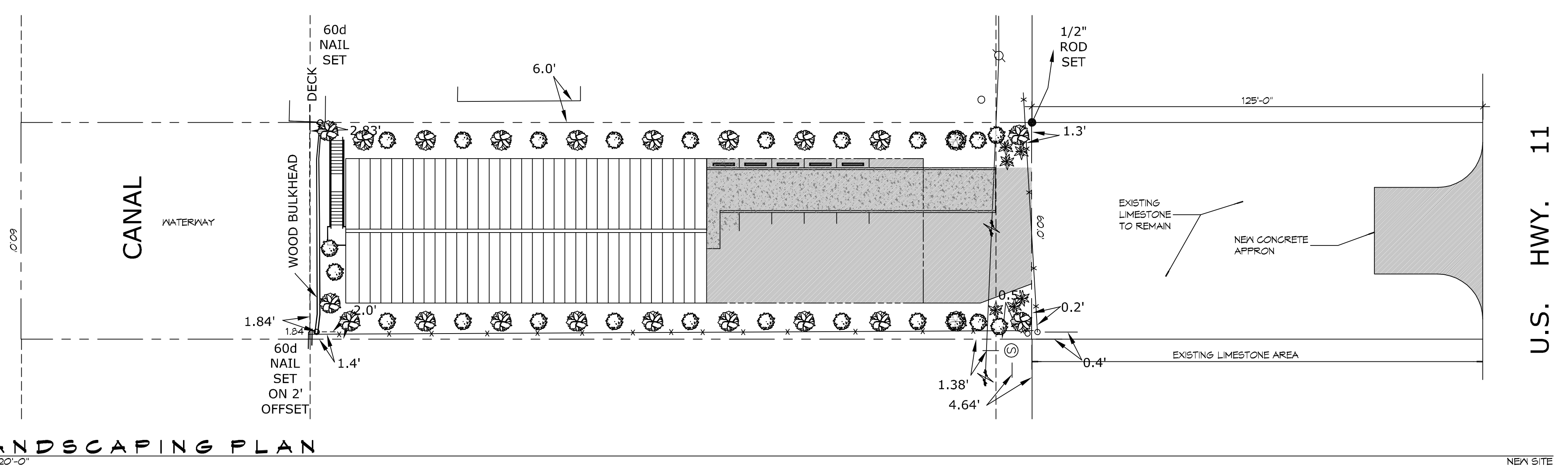
3 OVERALL SITE PLAN
SCALE: 1"=20'-0"



2 GROUND FLOOR SITE PLAN
SCALE: 1"=20'-0"



1 LANDSCAPING PLAN
SCALE: 1"=20'-0"



GENERAL SITE NOTES

- ALL NEW SITE GRADING SHALL PROMOTE POSITIVE DRAINAGE AWAY FROM BUILDING AND TOWARD THE REAR OF THE PROPERTY INTO THE CANAL WATERWAY.
- CONTRACTOR SHALL CONTACT LOUISIANA ONE CALL PRIOR TO COMMENCEMENT OF ANY SITE EXCAVATION FOR ELECTRICAL AND PLUMBING.

FLOOD ZONE INFO

FLOOD ZONE AE
 BASE FLOOD ELEVATION 12'
 T.O.G. 4.1'
 F.F.E. 16.1'

BUILDING INFORMATION

OFFICE WAREHOUSE 4000 SQ. FT. TOTAL
 400 SQ. FT. OF OFFICE
 3,600 SQ. FT. OF WAREHOUSE

PARKING REQUIREMENTS

ZONED - HC-2
 1 PARKING SPACE PER 350 SQ. FT. OF OFFICE
 1 PARKING SPACE PER 1000 SQ. FT. OF WAREHOUSE
 TOTAL OF 4.74 REQUIRED AND 5 PROVIDED

LEGEND

- DD BLANCHARD MAGNOLIA
 22 CLASS "A" TREES, AT THE TIME OF PLANTING, SHALL HAVE A MINIMUM CALIPER OF AT LEAST TWO AND ONE-HALF (2-1/2) INCHES, MEASURED SIX (6") INCHES ABOVE THE ROOT BALL, AND A MINIMUM HEIGHT OF 10-12 FEET AND A MATURE HEIGHT OF 40 FEET AS PER THE NATIONAL NURSERY ASSOCIATION STANDARDS.
- LITTLE GEM MAGNOLIA
 22 CLASS "B" TREES AND ALL TREES, OTHER THAN CLASS "A" TREES, AT THE TIME OF PLANTING, SHALL HAVE A MINIMUM OF AT LEAST ONE AND ONE-HALF (1-1/2) INCHES MEASURED (6") SIX INCHES ABOVE THE ROOT BALL AND A MINIMUM HEIGHT OF 8-10 FEET AND A MATURE HEIGHT OF 20 FEET AS PER THE NATIONAL NURSERY ASSOCIATION STANDARDS.
- AZALEA
 6 SHRUBS: A RELATIVELY LOW-GROWING BUSHY PLANT, USUALLY WITH WOODY STEMS. FOR THE PURPOSE OF THIS DEFINITION, GROUND COVER, TREES AND ANNUALS ARE NOT CONSIDERED SHRUBS. ALL SHRUBS, AT THE TIME OF PLANTING, SHALL HAVE A MINIMUM HEIGHT OF TWO (2) FEET.

DAMMON
ENGINEERING, INC.
 LOUISIANA & MISSISSIPPI
 Chief Engineer: Brian Michich, PE
 1554 Old Spanish Trail
 Suite 101, Metairie, LA 70002
 PH: 985.641.5832 F: 985.641.5950

REVISIONS	DATE



PROJECT ALIGNMENT
 FREDERICK J. BOURLIN
 4764 PONTCHARTRAIN DRIVE
 SLIPPELL, LA 70489
 JOB NO: XXXX DATE: 04/26/2016
 DRAWN BY: CKD/JTL CHECKED BY: JMS

SHEET TITLE:
 SITE PLAN
 DRAWING NUMBER:
C101

